

£1 free to members

Spring 2022

# The Wharfinger

HEREFORDSHIRE & GLOUCESTERSHIRE CANAL TRUST



EDITION **151**

REBUILDING A SUSTAINABLE CANAL BETWEEN HEREFORD & GLOUCESTER

Working together in the present to revive the past and secure a better future.®

# Who does What?



## Honorary Life President:

Janet Moulton

## Vice Presidents:

R. E. Barnes TD, Richard Graham MP, Rt Hon. Mark Harper MP, Duff Hart-Davis, James Hervey-Bathurst CBE DL, Sir John Lushington Bt, Rt Hon. Jesse Norman MP, Diana Organ, Bill Wiggin MP

## Board of Trustees

Chairman:	Ralph Barber
Finance:	Philip Marshall
Health and Safety:	Ed Helps
Government:	Robert Morland
Land:	Richard Appleton
Promotions:	Debbie Barber
Compliance:	Vaughan Welch
Projects:	Eamonn McGurk
	Nigel Jefferies
Company Secretary:	Philip Marshall
Accounts Examiners:	Griffiths Marshall, Gloucester

## Commercial

Philip Marshall  
Ed Helps, Steve Clark

## Health & Safety

Ed Helps  
Hereford & Gloucester Construction Safety Assoc.

## Restoration Teams

Hereford Roving Team:	John Pritchard
Kymin East:	Ralph Barber
Yarkhill:	Chris High
Oxenhall:	Roger Coombs
Over and Vineyard Hill:	Andy Fowler

## Major Projects Teams

Malswick Project: Robert Heigham, Tony Sellwood  
Alan McBride, Philip Marshall, Bob Hargreaves  
David Gregory, David Monnington

## Membership Services

Secretary:	Tony Higgins
Gift Aid:	Janet Moulton, Gordon Lowthian

## Press Liaison:

Ralph Barber

## Canal Sales & Promotion

Hereford Roving Team: Janet Moulton

Barbara Moses, Ray Moses

Penny Shetliffe, Pat Skeet, Heather Worth

Gloucester Roving Team: Ginny Birkett

## The Wharfinger

Content Editor:	Ralph Barber
Layout Editor:	Nick Dymott
Proofreading:	Gillian Northcott Liles, Debbie Barber
Advertising:	Ginny Birkett
Distribution:	Janet Moulton

## Digital Photo Library:

Nick Dymott

## Website

Web Master: Nick Dymott

## Social Media:

Facebook:	Ralph Barber, Nick Dymott
Twitter:	Debbie Barber
YouTube:	Ralph Barber

## Social Events

Organiser:	Janet Moulton
Support:	Nigel Jefferies
	Stephen and Gillian Chowns

## Talks and Walks

Coordinators: Nigel Jefferies, Dick Skeet

## Information Management

Coordinators: Ralph Barber, Dick Skeet

## The Wharf House Company Limited

Directors:	Philip Marshall – Finance Ed Helps, Eamonn McGurk,
Accounts Examiners:	Griffiths Marshall, Gloucester



# What's in Edition 151...



Cover image – Reed Cutting Boat	OFC	Owl Boxes installed	21
Who does What?	IFC	Social Evenings	21
Trust Business	3	Grand Holiday Draw 2022	22
Notification – AGM 2022	5	Sales and Promotions Events	23
Introducing – Tony Higgins	6	Thank You Day	23
Reed Cutting Boats at Aylestone Park	7	Remote Socials	25
Over Site News	9	Gloucester & District Model Boat Club	28
Swans at Over	11	Sailing4Disabled	29
Tales from the Workshop	13	Books for Sale	31
News from Malswick	14	H&G Stamps Appeal	31
Our Land Fund needs You !	15	Volunteers needed	31
Kymin	16	Advertisers supporting The Wharfinger	32
Oxenhall Tidy Up in Pics	16	Site Days	32
Llanthony Lock	17	Contact Details	IBC
Yarkhill	17	Canal Map	OBC
H&G CT 30th Anniversary Walks	19		

## **E.B HAYWARD & Co.LTD** *Sheet Metal Work, Welding & Fabrications*

We are a family run business established over 50 years ago, specialising in sheet metal work and fabrications in most metals including mild steel, stainless steel, aluminium, titanium, copper and brass.



- Items can be manufactured to your own drawings or from instructions.
- Quantities from 1 to 10,000.
- Sizes can range from a washer right up to fabrication of 1 tonne.

We have a wide client base with particular involvement in hydraulic press, concrete, materials handling, feed and flour milling industries.

It has been our pleasure in supporting the Herefordshire and Gloucestershire Canal Trust for over 20 years, and we will continue to *work together in the present, to revive the past, and secure a better future.* © H&GCT

**Simon Hayward: 01452 700384, Fax 01452 700740**  
**SHEET METAL WORKS, ASHLEWORTH, GLOUCESTER, GL19 4JJ**

# Your needs . . .

# **BETA MARINE**

Seagoing

Saildrives

Inland Waterways

Marine Generating Sets

Spares & Support



- 34 years of customer centred focus, listening to needs & delivering long term value solutions.
- Specialists in customer advice & support at all points of a products life.
- Superb after-sales service via our network of approved engine installers and service centres.
- Extensive range of 14 to 98 HP keel cooled propulsion engines with mechanical or hydraulic gearboxes.
- Full hydraulic drive and hybrid propulsion options available.
- Super silent acoustic housings, 3.5 or 5.0 kVA travel power & bow thruster options available.
- Keel cooled Generating Sets 4 to 58 kVA with or without super silent acoustic housings.
- 5 year self-service warranty\*.
- **REDUCE CO<sub>2</sub> BY 90%! Having conducted performance tests on HVO fuel Beta Marine have concluded it is compatible and can be safely used continuously without engine modification. If other FAME bio fuels are used or mixed we strongly advise to make use of our alternative fuel kit option. Available for new or retro fit-able to existing engines.**

## **. . . our tailored solutions** **delivering reliability and peace of mind**

\*Recreational use, terms & conditions apply.

**www.betamarine.co.uk**

**Tel: +44 (0)1452 723492 Email: sales@betamarine.co.uk**



Welcome to the 30th year of the Herefordshire and Gloucestershire Trust.

Thank you to all past chairs, trustees, members, volunteers, and supporters. We have had a lot of discussions about open days and the like to celebrate the anniversary as we think we should thank everybody. The Over site, looking like a canal should, will host an H&G Members and Volunteers Thank You Day on the 24th of September 2022.

The aim is to meet members and volunteers (old and new), have a walk along the canal or take a boat ride. We plan to run the boats from 10 till 4. We have asked along the other water users at Over, so lots to see. Yes, you can bring the grandchildren along for a ride on a boat as we are restoring the canal for them. Maybe one day, they will enjoy a boat ride from Over to Hereford or before that help with its restoration.

Nigel Jefferies receives all our grateful thanks for his past work over 20 years as Membership Secretary. He is now giving up this role but continues as our longest running Trustee. Thank you so much Nigel. Tony Higgins has now taken on the Membership role – further details about Tony can be found on page 6.

We start the year with a lot of successes. The latest, as reported in the last edition, was the gaining of planning permission at Malswick for 600 metres of canal. I quickly visited on the site in early February, and it is good to see the success of the planning permission has not gone to their heads – tea breaks are continuing as usual.



As a part of this success, we will have three weeks of WRG (Waterways Recovery Group) camps at Malswick in the summer to help dig out the canal channel and to do training with our volunteers.

After walking the route four times myself, and I know Phil Platt has done it more times, we have a new walk leaflet in the Ashperton area – read all about it later.

I always ask in my introduction, and this version is no different, we are still looking for Trustees. This month I will mention Operations Trustee – who will work closely with all active sites to turn them into finished canal with boats on, eventually. The OT will work with the site leaders with their plans for their sites, helping with their resource and other requirements.

I occasionally receive emails and letters about the canal. A recent one from a new member: How many miles in water? How many sites in progress? How many locks in place?

So how many miles in water? Using the magic of Google Earth (and I am talking about water along the length of canal, not just that we have under H&G ownership) it is around a

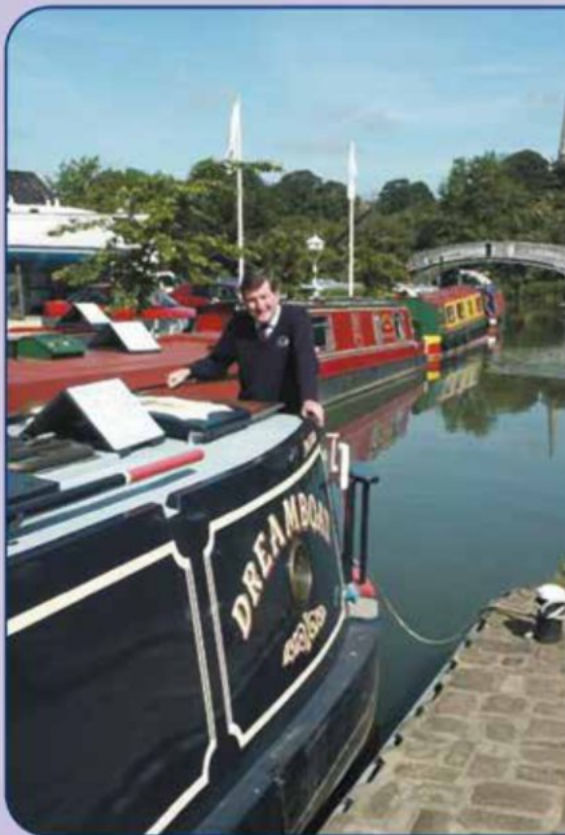
# *Buying or selling your DREAMBOAT?*

*Then make Braunston Brokerage  
– at the heart of England's  
waterways – your first port of call!*

*Established in 1988, we are  
a major player in the selling  
of narrowboats – new and  
secondhand – with a  
reputation for professionalism  
that is second to none.*

*Our marina offers the fullest  
range of support services.  
Uniquely, we have two dry  
docks on-site for surveys,  
hull-blackening, repaints, sign-  
writing and below waterline  
repairs. Also engineering and  
refit facilities.*

*Sell your Dreamboat  
where it will be seen!*



For full information – including our  
competitive brokerage package –  
contact Tim Coghlan at:

Braunston Marina Limited, Braunston,  
Nr Daventry, Northants NN11 7JH  
Telephone 01788 891373  
Fax 01788 891436

Website: [www.braunstonmarina.co.uk](http://www.braunstonmarina.co.uk)  
Email: [sales@braunstonmarina.co.uk](mailto:sales@braunstonmarina.co.uk)



third in water, in the winter, several sites will fill up with water and then dry out over the summer months. Of course, we also have other parts of the canal like the flooded tunnel at Ashperton with too much water. How many sites in progress? Over, Moat Farm, Malswick, Newent & Oxenhall, Dymock, Ledbury, Monkhide, Yarkhill, Kymin, Aylestone Park and a couple that we are in current discussions with landowners.

The AGM is back face to face this year – we hope. We are looking at a re-introduction of the slide show plus some videos and future news to encourage you all (well a lot of you?) to attend. If you want to see progress, we have several YouTube videos on the H&G site that are showing great progress at Malswick plus videos on boats that visited again this year to help control the reeds.

I hope you enjoy this edition of the Wharfinger and as always, any questions, comments, please contact me via ***chairman@h-g-canal.org.uk***.

*Ralph Barber*

## Notification – Annual General Meeting 2022



**The 2022 Annual General Meeting of the Herefordshire and Gloucestershire Canal Trust will be held at Ledbury Community Hall on Wednesday, 22 June 2022 at 7:30pm.**

The formal notice of the 2022 AGM will be published on our web site as required under the Articles 28 days prior to the above date. In accordance with the H&G CT's Articles and Memorandum of Association, those members of the Board of Trustees who are retiring on rotation but offering themselves for re-election do not require to be formally nominated to serve an additional term.

### New Nominations

New nominations to serve on board of Trustees are Welcome. Requests for a nomination form should be made by the person making the nomination by email ***agm@h-g-canal.org.uk***. Nominations should be submitted in the period between 28 days and 7 days prior to the AGM.

### Proxy voting

Every member who is entitled to vote at an AGM may appoint a proxy to vote in his/her stead. A proxy must be someone entitled to vote at the AGM. Proxy forms are also available via email to ***agm@h-g-canal.org.uk*** and should be completed, signed and returned to arrive at least 48 hours before the start of the AGM.

After the official meeting there will be a slide show covering activities over the past year and what next. This year we are looking forward to having an in-person meeting after two years of Zoom.

We are also considering whether it is possible for our membership from afar to connect to the meeting digitally.

# Introducing – Tony Higgins



The moving finger writes, and having writ moves on. So, it is with membership secretaries. Nigel Jefferies has been successfully looking after our membership for over 20 years and has now decided that it is time to hand over that responsibility to another person, which is me.

Many thanks and much appreciation are due to Nigel for his unflinching dedication over this huge run of time and I will be keeping an ear close to his ground for hints and tips going forward.

I, that is Tony Higgins, have lived in the area for around 12 years but only retired recently and had the fortune to run into Chairman Ralph and get involved with the Yarkhill working group last autumn.

My own canal background started with a university narrow boat holiday on the Cheshire Ring in 1971 and continued in a 'relationship' with a black iron hulled 72-foot ex Birmingham Coal Butty Boat on the BCN based at Gas Street Basin. Her name was "Orianne" and she ended up with me at Ken Keay's boat yard in Walsall having a rotten elm bottom replaced with some neatly welded steel plate. This was just prior to dutch elm disease when elm planks were horribly expensive! Alas, she had to go to fund a house and marriage, but a love of canals and of industrial heritage remains.

There are two aspects to the maintenance and restoration of historic canals in which the Hereford and Gloucester excels. The industrial heritage for this part of England is particularly interesting being on the fringes of the industrial revolution and the canal reflects this with tunnels, cuttings and embankments that were state of the art and features such as Steven Ballard's Skew Bridge which is reputed to be the "skewyist" bridge on the whole canal network.

The second aspect is that of opening up the countryside so that everyone can enjoy walking in the open air. The Hereford and Gloucester Canal Trust is working to make more of the canal-side available to walkers to experience the beauty and tranquillity of our counties.

As membership secretary I want to ensure that all members are up to date both in their details provided to us and with our activities provided to them. So this is just to let everyone know of the change in personnel and to say that if you have any queries or worries just let me know via email on the usual address [membership@h-g-canal.org.uk](mailto:membership@h-g-canal.org.uk) or if urgent on mobile tel: 07971 517434.

Looking forward to getting to know some of you and to providing a service for all of you.

*Tony Higgins*



# Reed Cutting Boats Back at Aylestone Park



*Launching the picking up boat. They have an electric winch within the trailer that controls the launch.*



*The cutting head ready to load on the cutting boat.*



*The cutting boat working down the canal*



*The cutting boat is driven by paddles, so we can say we have had paddle boats on the canal!*





*The picking up boat doing its work*



*A bit of tree work as well*

*Following the success in 2021 with dealing with the reeds at both Over and Aylestone Park, the reed boats made a return visit in February. By keeping the reeds cut back on an annual basis, it is hoped that the spread of the growth can be kept under control. Pictures below show before and after at Aylestone Park.*

*Ralph Barber*





The risks associated with Covid and in particular the Omicron variant, are still present. Consequently, our volunteers remain cautious and careful – choosing to forego the comforts of the site hut and to take breaks in our “Covid - safe” dining facility.

## Site Upkeep

Work around the site during the winter months has predominantly been to clear away dead undergrowth and fallen branches. Also, a significant number of young self-set willow trees that have appeared along the canal bank have been dug out before they become too large to remove.

## Bird Nest Boxes.

Thanks to the generosity of Scouts in Hereford, we have been supplied with a number of new nest boxes to replace or supplement some of our existing ones which have reached the end of their useful life. These have now been placed around the site and we wait with interest the start of the nesting season. Will the new homes be considered as desirable residences and if so – by whom?

## Vineyard Hill

Following the efforts made to clear weed from the canal, as reported in the last issue of Wharfinger, we have attempted to keep the water as clear as possible by running boats along the canal every week. Weed growth at this time of the year is very much reduced in any case, but keeping boats moving along the canal will hopefully keep the situation in check when the growth begins again later in the year.

One problem that is of concern, however, is slippage of the hillside along one section of Vineyard Hill. This has occurred here in the past, resulting in a significant reduction in both the width and depth of the channel, and monitoring of the hill indicates that further intermittent slippages may still be happening. Whilst possible schemes for a longer term solution to the problem are considered, we are hoping that keeping boats running through the channel will provide a short term fix and prevent the channel becoming impassable.



## Heritage Boats – Mr Maysey

Work on Mr Maysey has progressed very well over recent weeks. The rear deck has been completed and re-painted. The guard rails around the deck are being cleaned off and repainted, together with the handrail getting treated to a rub down and re-varnish.

The cabin steps which collapsed under Graham earlier (see Wharfinger 150) have



now been completely rebuilt and sealed at the top to prevent water from the deck seeping in and causing a repeat of the previous problem

Work is now well under way on the front of the cabin and the fore deck. New woodwork has been made to replace the rotted timber and when this is completed and fitted, painting of the exterior of the cabin will go ahead.



## Susan-E

After the extensive re-fit carried out over the summer, better weather protection for the boat over the winter period was felt to be necessary.

Therefore, the boat trailer, briefly modified to carry the tractor, has been returned to its original form. Susan has been taken from the canal and loaded on to the trailer, then sheeted over as protection until the better weather arrives and we can re-launch her.





## Alder, Renton and Bosley

These boats are all in an operational condition.

At the moment, mainly Renton and Bosley are being used to help keep the Vineyard Hill channel open as Alder is a little deeper in the water and is more prone to getting stuck.



We continue to seek new volunteers to join us. At the end of last year we were pleased to welcome Richard as the latest new volunteer and we have a two further enquiries being followed up.

## The Winget Concrete Mixer

This was the subject of a short article in the previous issue of Wharfinger.

So far, we have not received any information regarding the mixer, or heard from anyone who may be interested in having it.

It remains at Over for the present time, but as we have no further use for it we would like to dispose of it – preferably to somewhere it may be used rather than as scrap.

Any background information or interest would be very welcome and we can be contacted via email at [overbasin@h-g-canal.org.uk](mailto:overbasin@h-g-canal.org.uk).

*Andy Fowler*

## Swans at Over



Meet Tiny and Tim my two orphaned cygnets. After a phone call five weeks ago from Swan rescue, the tiniest cygnet I've ever seen for its age arrived. She had been found abandoned, all alone very much underweight and starving.

I didn't think she would last the night, but she survived. A week later a phone call from Swan rescue brought me another distressed cygnet. He had been found battered and bruised by other Swans.

It's taken a lot of TLC and patience from Nanny Swan but after five weeks they have almost doubled their weight and size and look amazingly healthy.

*Monica Hamer*



# KEYWAY



**TRANSPORT | BULK EXCAVATION  
RECYCLING | STONESUPPLIES | SKIP HIRE**

☐ 01452 300567

☐ [transport@keyway.co.uk](mailto:transport@keyway.co.uk)

With a fleet of over 100 lorries operating across the South West, Keyway's presence dominates the region. Keyway is constantly evolving with the newest technologies to ensure timely deliveries which go hand in hand with keeping emissions efficient. One of our strongest values is taking care of our environment. We offer an extensive range of transport solutions and are dedicated to our customer experience.

Keyway has been established for over 50 years, building an excellent, well respected reputation within the industry. The company remains a family run business and has seen year on year growth. We are confident in saying that you are in safe hands when choosing Keyway, as we commit to go above and beyond expectations and have a brilliant customer retention because of this.

# 1<sup>ST</sup> CALL



**EXCAVATORS | DUMPERS | BREAKERS  
FORKLIFTS | ATTACHMENTS | DOZERS**

☐ 08000 155666

☐ [hire@1stcallplant.com](mailto:hire@1stcallplant.com)

With over £10m invested annually, 1st Call pride themselves on ensuring they deliver a 'perfect package', from taking the first order through to completion of the hire. Our vision is not only to provide the right equipment in a safe and efficient manner, but also each of our machines are backed up by current technology and innovation which ensures our clients receive first class experience along with being truly cost effective.

1st Call can offer a same day or next day delivery on self-drive hire using the industries top brands of equipment giving the customers the quality they desire. Our fleet has an age profile of less than 12 months but in the unlikely event of a breakdown, we have a team of qualified and experienced mobile engineers who will be onsite within a few hours.





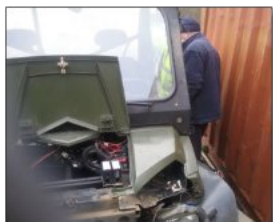
# Tales from the Workshop

Autumn saw a thorough Inspection of the MF135 that a raised few issues and traumatised the team.

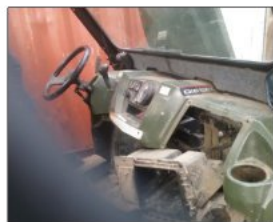
The first scare was the hydraulics, which became fainter until non-existent. Tests revealed a failed pump nestling in the depths of the transmission. This involved a complete strip of the transmission and fitting of a new pump, new oil, and filters; full lift restored to great relief. Rejoicing was short lived as checks then revealed no battery charging, so dynamo and controller were sent to Mr Pinder who tested both, found both expired and sent back two service exchange units.



The forklift attachment was next to be scrutinised, which presented a major challenge. The lift chains failed the test and proved nonstandard, making renewal a step too far. The fork lift is rear facing but the operating position is fixed forward thus deeply frowned upon by HSE. A decision was made to consign the rear forklift to heartbreak corner and construct a quick detach interchangeable forward forklift, making it a much safer option. This also freed up the PTO and 3-point linkage paving the way for various attachments and a transport box.



Progress has been set back a little as the team had to wrestle a few dragons to the ground. One of these has been the ATV hand brake which certainly did not. This involved removing not only the front but also the complete dash to enable renewal of the operating clevis pins.



*We clearly need to wipe the dirty oil off the workshop camera lens too!*

Tipping the rear end enabled Roger to dangle into the abyss in order to replace the transmission pads. Battered but proud of the achievement, the key was turned to test the amazing effort to be met with click. A battery test revealed despair, but a jump start got it going and a charge check was good. A new battery was begged from Philip and the ATV handed back to resume its stoic work.

Secondly, the pitiful saga of the Crawler Dumper, but we will save this for next time.

The Over reed cutter also waits patiently for attention as does the Moat diesel pump – plenty of worthy projects on the list and lots to look forward to.

*Chris Phelps*



The old site entrance had limited visibility for vehicles leaving the site, so a bigger and higher gate was designed. The new entrance has much more substantial groundwork. Ian Bateman is using the roller to compact the layers of aggregate.

Hedge planting continues apace. Over a hundred metres of hawthorn and other native species have now been planted thanks to a very generous anonymous donation.

Work on the small culvert paused for a few minutes when something looking like a bomb was discovered sticking through the mud. On inspection it turned out to be the end of an old gate post. Still, Graham is handling it very carefully (it wasn't dangerous but was very muddy).

The canal passes over a small stream and pipework was used to allow this. The 0.7 tonne concrete pipes were lowered in place by Malcolm Clivery and Peter Woodfield. Bob Hargreaves carefully aligned them and ensured the connections were correctly made to the top and bottom inspection chambers.



There remains a great deal more to be done at Malswick.

*Alan McBride*



Search Herefordshire and Gloucestershire Canal Trust on YouTube to see more on the work at Malswick.

---

# Our Land Fund needs You !

---



To those of you on the email distribution list and who have responded to our request for funds to buy land next to the Malswick site, both north and south – **A Big Thank You.** Unfortunately, we still need more. If you could support the Land Fund for this and future purchases, please do so – at time of writing we are awaiting results of discussions about the additional land – please see web site for most up to date information.

*If you wish to donate this can be done via the web site or using BACS transfer (sort code 16-21-20 and account 11600694). Please mention it is for the Land Fund – it will then go into restricted funds.*

It may seem like yet another request for money as we also feature in this Wharfinger the annual **Grand Holiday Draw**. Unfortunately, volunteer time and good will can only go so far, it basically comes down to the fact that hard cash is required.

While spending money on other things you can sometimes create funding for the H&G Canal Trust. Below are some ideas.

## Shopping on the internet.

H&G are registered with both [easyfundraising.co.uk](http://easyfundraising.co.uk) and [smile.amazon.co.uk](http://smile.amazon.co.uk). If you purchase through either of these sites, we can receive a small percentage of each purchase as a donation. Just sign on and choose us as your selected charity and Bob's your uncle – you are helping H&G with only an extra click of your finger.

## Donations

If you should be lucky enough to win on the lottery or premium bonds or any other windfall, a donation via bank transfer can be an easy way to help the trust. If you are able to Gift Aid it even better – always good to get something extra from the tax man. By default, all our donations go into a general account, but should you wish yours to be for a project we have a number of areas that we can put your funds into and restrict it to that project.

## The Land Fund

Apart from the request at the start of this item, we do need to increase the funding in the land fund. We are in discussions with Herefordshire Council around several items of land that we may gain due to S106 contributions, but other land in the area will need purchasing to extend the canal.

## Legacy

You can't take it with you! If you could leave a legacy to the trust – small or large we don't mind – that too will help. By giving money to the H&G Trust as a registered charity this can help with your tax position within your will.

## Members

Encourage your family, friends and neighbours to join and support the trust.  
*Thank you so much for your continued support.*



# Kymin

Continuing our Sunday outings, we had some tree work to do due to Storm Arwen.

A tree from the offside had fallen across the canal and blocked the towpath. The towpath work was quickly completed, enabling walkers to pass safely. The work on the branches over the canal will be revisited at the next Sunday outing to ensure the canal is clear.

*Ralph Barber*



## Oxenhall Tidy Up in Pics



*The team have been hard at work at Oxenhall over the winter. The lock side has been cleared and tidied up, work continues on restoring a section of the wall and progress is being made clearing the towpath further on towards the tunnel*

*Roger Coombs*





Work continued steadily as normal through much of the quarter: cutting back trees leaning into the hedge on the Yarkhill section and levelling the wild side on Major Barnes' section to allow access to remove cut wood.

That is until the high winds and rain of December presented us with a fallen tree stretching right across the canal on the Yarkhill section virtually blocking the wild side and restricting traffic along the towpath.



It was a call of 'all hands to the trunk' and the team enjoyed the challenge of dragging the trunk out of the canal to be cut up, and the subsequent actions to return unimpeded access to both sides of the canal. Work that has been much appreciated by our regular dog walkers.

*Bob Comba*

## Llanthony Lock

The lock at Llanthony is a part of the H&G Canal that is not mentioned much. It is well worth the visit. Parking is available in the Castlemeads Car Park, unfortunately you have to pay.

You can then take the footpath exit at the southern edge of the car park and walk under the A430 and will see an entrance way under the old railway line that takes you along the Wysis Way and an opportunity to go through Llanthony Lock. Prior to the lock you can see a couple of mooring bollards that show how much the river has changed over the years due to the location of these bollards to the river edge, not a place to moor these days.



Thanks to the Gloucestershire Community Payback service who are now going to be visiting the site over the season. They will be clearing the undergrowth from the gateway all the way through the lock base and to the next gateway when you leave H&G canal site. You can continue a walk along the Wysis Way and following the river Severn up to the new railway bridge and also cross Telford's bridge to get to The Lock Keepers for a coffee and continue to have a look at the restored section of canal and our historic boats in Over Basin.

*Ralph Barber*



# HEREFORDSHIRE Walking Festival 2022

If you have enjoyed this year's  
**Herefordshire Walking Festival**  
Join us next year too...

**Saturday 18th to  
Sunday 26th June 2022**



**HEREFORDSHIRE** it's good to walk...



# H&G CT 30th Anniversary Walks



## Yarkhill and Kymin

As part of its 30th Anniversary Celebrations, the Trust is offering a guided walk as part of the Herefordshire Walking Festival in June.

The walk takes place on Sunday 26th June, starting at Yarkhill Village Hall at 10am and is approx 7.5 miles long. The route will go up and over Shucknall Hill and include stretches along the tow path at Kymin and Yarkhill going on to Monkhide before returning via footpaths back to the Village Hall where there will be a display about the Trust. Tea/Coffee and cake will be available with donations to the Trust.



For further details and to book on the walk check the festival website:  
[www.herefordshirewalkingfestival.co.uk/](http://www.herefordshirewalkingfestival.co.uk/)

## Ashperton and Staplow

Phil Platt, one of our members, has kindly agreed to lead an Anniversary Walk on Saturday April 9th, free to members and volunteers. This will take in a section of the new Ashperton walk (see below) and amalgamate it with the original Staplow walk – created by our long-term trustee Nigel Jefferies. The walk will get to the Oak Inn at Staplow for lunchtime. (Lunch to be paid for separately.) The return will take in some of the morning's route and then branch off to pastures new, eventually returning to base at Ashperton. We also expect to offer some normally unavailable views of the canal.

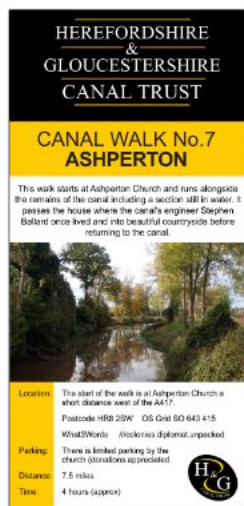
The walk is mainly on level ground and is approx 8 miles long. Sturdy shoes or boots advisable.

You will need to register for the walk as unfortunately numbers will be limited so please book by 5th April. Details of start time will be sent out to registered walkers.

Please email [walks@h-g-canal.org.uk](mailto:walks@h-g-canal.org.uk) to book your place.

As mentioned above, Phil has created a new walk for the H&G. The circular walk starts at Ashperton church and combines sections where the canal is still in water with the beautiful Herefordshire countryside and far-reaching views across to the Malverns and May Hill. It's a good long walk of 7½ miles, with numerous stiles and varying gradients. Time given to complete is around 4 hours – but you can obviously take it slower to enjoy the scenery.

You can obtain more details in Canal Walk leaflet No 7 – Ashperton via the website or it will be available at monthly socials and other Trust events.



## Canal Walks



H&G Canal Trust has updated its series of walk leaflets which explore various parts of the Herefordshire & Gloucestershire Canal.

**STAPLOW,  
WITHINGTON WHARF,  
DYMCK,  
LLANTHONY LOCK,  
OXENHALL and OVER BASIN**

*All proceeds towards the promotion and restoration of the Herefordshire & Gloucestershire Canal.*

*More details and ordering options available on the website.*

## Logs for Sale Proceeds to Trust Funds

These logs are processed by our volunteers from the clearance work during canal restoration. The sale of them helps to fund the cost of our work restoring the Herefordshire and Gloucestershire Canal.

After April 2022 each log order will need to be 2 cubic metres or 3 dumpy bags @ £75 per bag



Purchases can be arranged by contacting our Malswick site team by email: [malswick@h-g-canal.org.uk](mailto:malswick@h-g-canal.org.uk)

### NUMBER ONE

We're Number 1 Restaurant in Ledbury! Fabulous news from TripAdvisor as we're now first out of 32 restaurants in Ledbury area. THANK YOU to everyone for making it happen!

TO BOOK PLEASE RING 01531 640954

## THE OAK INN STAPLOW

01531 640954

[www.theoakinnstaplow.co.uk](http://www.theoakinnstaplow.co.uk)

THE HOME OF COUNTRYSIDE COMFORT FOOD



## Owl Boxes installed



Grateful thanks to a volunteer who made two luxurious owl boxes and to a canal-side landowner who has allowed them to be installed at a farm linked with the canal.

These are now placed for any passing owls to find and hopefully take up residence.

*Ralph Barber*



## Social Evenings

It was lovely to see so many members in person at our first social evening of the year at the Royal Oak. Usual place, just a different day which will be our day or should I say evening going forward. We hope we can continue with the **3rd Thursday of the month** at the Royal Oak, Much Marcle, Herefordshire.

At January's social a volunteer from our Yarkhill site give us a talk on Venezuela. Harold Armitage gave us a view of his travels around that country a number of years ago. They went there especially as his wife is very fond of parrots. Harold, in his usual honest Yorkshire approach, gave his candid view of the country and its people. The country has so many good points that hopefully, although currently a troubled land, they can sort out their economy and safety for their citizens soon as the wildlife, particularly the macaws, looked fantastic.

**17 March 2022 – Mike Potts**

**An historical journey along the H & G – and other interesting events**

**21 April 2022 – Gareth Callan Davies**

**Beer by Boat – And why IPA? Come and find out.**

**19 May 2022 – Paul Barnett**

**Cotswold Navy** – land-locked as Gloucestershire is, this talk explores the region's inseparable connection with the sea and its unheralded sacrifice during Warship Week 1942.

Sadly, the price of speakers and their travelling expenses have increased dramatically so reluctantly the entrance fee will now be £2 – but please still buy a raffle ticket!

Janet is currently working hard on the programme for the rest of the year. Hopefully we will see and hear some of the speakers planned for the 2020 season – so long ago!

Friends and colleagues will be eager for the chance of a great holiday for just £1!

Once again we have some great prizes, so let's make this another successful fundraising event!

**1<sup>ST</sup>  
PRIZE**

## **NARROW BOAT HOLIDAY for FOUR**

ONE WEEK PRIOR TO 31/5/23 excluding Bank Holidays. *Donated by Black Prince Holidays*

**2<sup>ND</sup>  
PRIZE**

## **One Day's BOAT HIRE on the MON & BREC CANAL**

March – October 2023. *Donated by ABC Boat Hire*

**3<sup>RD</sup>  
PRIZE**

## **ONE NIGHT BED & BREAKFAST for TWO**

at The Lock Keepers, Over Wharf, Gloucester. *Donated by The Lock Keepers Company*

*Ticket printing kindly sponsored by River Canal Rescue*  
**and... Yes – tickets are still just £1.00 each!!**



The prize winners will be drawn at the Social Evening at The Royal Oak, Much Marcle, on 15 September 2022.

Our thanks to our friends and supporters **Black Prince Holidays**, **ABC Boat Hire** and **The Lock Keepers** for donating the holiday prizes – every pound raised is a pound towards restoration of the Canal.



As usual, members are being sent two books of tickets to sell to family and friends. If you would like more books or as a non-member wish to purchase some tickets please contact Janet Moulton via the Contact Us page on our website.

**Thank you.**

*Janet Moulton*

Promoter: Mrs J Moulton, 18 Coningsby Court, Coningsby Street, Hereford, HR1 2DF.  
Registered under the Gambling Act 2005.



---

## Sales and Promotions Events



The team are looking forward to getting out and about again this year – these are the events we hope to be attending and engage with the public with support from our members and volunteers.

Saturday 9 April 2022	<b>30th Anniversary Walk Ashperton/Staplow</b> , Herefordshire.
Saturday 30 April 2022	<b>St Richards Canal Festival</b> , Droitwich, Worcestershire.
Saturday 4 June 2022	<b>Ledbury Community Day</b> , Herefordshire .
Sat/Sun 25/26 June 2022	<b>Braunston Historic Boat Rally</b> .
Sunday 26 June 2022	<b>30th Anniversary Yarkhill Walk</b> , Herefordshire Walking Festival.
Saturday 20 August 2022	<b>Tibberton Show</b> , Gloucestershire.
Saturday 10 September 2022	<b>Newent Onion Fayre</b> , Gloucestershire.
Saturday 24 September 2022	<b>30th Anniversary Over Members Day</b> , Gloucestershire.
Saturday 12 November 2022	<b>Winter Fayre</b> , Newent, Gloucestershire.

---

Raising awareness and funds for the Trust's work is vital in maintaining progress with the Canal's restoration. Our Sales and Information Stand can be seen at many Waterways and Country Shows during the year.

We have two small teams of volunteers based at Hereford and Gloucester to cover both local and national events. Come and visit, or better still, join us on the stand. Additional volunteers are urgently need to help us at these interesting events. Our small and friendly teams will make you very welcome!

*Debbie Barber*

---

## Thank You Day



**Saturday 24 September 2022    10am to 4pm**

A thank you day for all our Members, Volunteers and supporters for the last 30 years of the Herefordshire and Gloucestershire Canal Trust will be held at Over Basin, just outside Gloucester and next to The Lock Keepers GL2 8DB.

You will be able to take a boat ride on Mr Maysey, see the model boats and other water activities. Meet new and old friends and get the most up to date information about the Herefordshire and Gloucestershire Canal and the next 30 years.

Bring your children and grandchildren so they can enjoy the water and maybe help with the restoration in the future as we restore this beautiful canal for them.

*Debbie Barber*



# MOAT CONTRACTING

GROUNDWORK SPECIALISTS



**Large enough to deliver. Small enough to care.**

**07887 544 400**

**moatcontracting@aol.co.uk**

**www.moatcontractingplanthire.co.uk**



In January we had our first face to face social of the year. Just prior to this I received an email from a member who lives across the UK and asked if they could connect to the social remotely.

So we are starting an investigation in to this.

The first question we have already answered: the Royal Oak has a network to which we could connect.

Next question is what software we would use and the best solution for this is Zoom due to a number of reasons, but it does have a cost as unfortunately Zoom has 40 minutes cut off if attending a zoom meeting for three or more people unless you pay. So here is the first question of the investigation.

If connecting remotely, would you help pay for the Zoom licence? Depending on the deal we got we are looking at about £120 per year, so if 10 people agreed to pay they would be looking about £12 per year. We run 9 socials a year. (None in the month of August, the AGM month and December.)

Coming back to the question. If you are interested in joining the socials remotely and happy to pay in part for the yearly licence, please email the following email address **[remote-social@h-g-canal.org.uk](mailto:remote-social@h-g-canal.org.uk)** so we can capture interest.

As this Wharfinger is due on your doorsteps by the 11th/12th March, if you could give us your views by the end of March 2022 giving your view on if you are happy to pay and how much for the nine events, it then gives us time to come back to you and arrange payment if there is enough interest and agreement to see if we can get this going for the first social in April 2022.

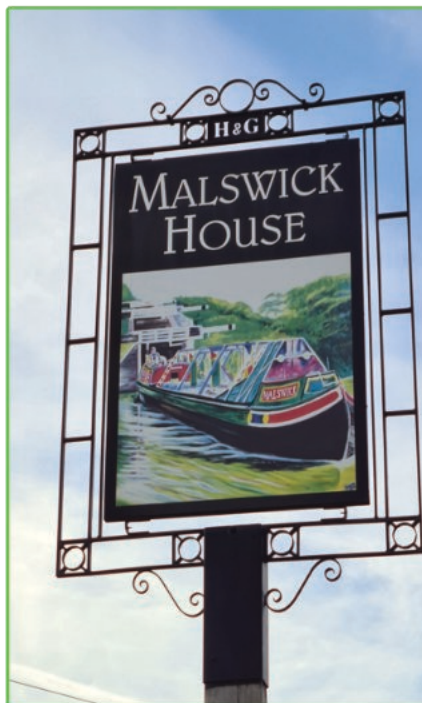
I am sure you will have questions, like the first one I could think of is -

- Why can I not pay per viewing? Maybe in the future, but we have an upfront cost of the licence and we need to gain interest. Then if this goes ahead, maybe we have a yearly cost that has a base number of members helping with the costs and if people wish to join for only a single event we have a non-discounted rate, but this all depends on interest and how this will all work.

Another question could be,

- I can attend for £2, but you are asking for £1.33 per social. We have costs at the Royal Oak such as the hall rent that has to be paid for. You also have the opportunity to take part on the raffle, enjoy a nice pint of beer and meet with others.

*Ralph Barber*



# WE ARE OPEN

**MON - THURS 6PM TO 11PM**

**FRIDAY 6PM TO 1AM**

**SATURDAY 10 AM TO 1 AM**

**SUNDAY 12 NOON TO 11PM**

**FOOD AVAILABLE EVERY DAY  
6 PM TO 8:30PM**



## Summer at THE LOCK KEEPERS

Modern British and European cuisine served in  
a quiet and relaxed canal side setting.

Quote Canal 2021 for 15% discount.

Valid Wednesdays Only.

Tables must be booked in advance using the promo code.

To Book call 01452 332900 or [eat@thelockkeepers.co.uk](mailto:eat@thelockkeepers.co.uk)  
Horseshoe Drive, Over, Gloucester GL2 8DZ



# Newent auto centre

Newent Business Park  
Newent, Gloucestershire GL18 1HP  
**Tel: 01531 828001**  
[www.newentauto.co.uk](http://www.newentauto.co.uk)  
[newentauto@yahoo.co.uk](mailto:newentauto@yahoo.co.uk)  
Mon-Fri 8am-6pm Sat 8am-4pm



**Complete Car Care  
designed for you  
and your car**

## MOT TEST CENTRE

Motorcycles  
Class 1\*2  
£27

Cars/Vans/  
Motor Homes  
Class 4  
£40

Commercials  
Class 7  
£45

QUALIFIED  
REPAIR AND  
SERVICE  
CENTRE  
FOR  
ELECTRIC  
AND  
PLUG IN HYBRID  
VEHICLES

Modern cars = Modern problems

Advanced Diagnostics

★  
ABS Braking

★  
SRS Airbag Faults

★  
Air Conditioning  
Climate Control  
Recharge & Service

## FREE RE-TEST

### FULL SERVICE & REPAIR FACILITIES

Our dedicated FAST FIT BAY offers the  
following on demand services

**TYRES**  
Large Stocks  
Lowest Prices

**EXHAUST**  
★ Free Fitting ★  
Best Prices

**OIL FILTER  
CHANGE**  
Plus much more

For all your  
motoring needs  
call Brian or Adrian  
for honest personal  
advice

**SPECIALIST ENGINE MACHINING AND REBUILD SERVICE**

# PRINT PLUS

**High Quality Print,  
Design & Finishing**

- Brochures
- Leaflets & Flyers
- Business Stationery
- Magazines & Mailing Service
- Posters, Banners, Exhibition Panels
- Vehicle Graphics

**Tel: 01432 272025**

Email: [enquiries@printplushereford.co.uk](mailto:enquiries@printplushereford.co.uk)

126 Widemarsh Street, Hereford HR4 9HN [www.printplushereford.co.uk](http://www.printplushereford.co.uk)



## Gloucester & District Model Boat Club

Please forgive me for opening my report on a sad note, especially to the residents who regularly walk the Over canal path. Late last year the familiar figure of wheel chair-bound Rob Strong passed away. Rob had not been sailing for about two months but was looking forward to early 2022 to resume his sailing. There is a fine photograph of Rob in the last issue of Wharfinger.

The residents of Staunton Hill at Over while having their breakfasts have heard unusual commands and firing coming from the canal. Have the very high tides brought yet another mysterious naval craft into the canal, yes. To accompany the naval fleet of the MBC we now have a Russian Corvette, Steregushchiy. Mike Price is the builder of this fine model. The hull is a purchased item but every other part Michael has constructed or moulded from scratch. You can imagine at 5ft overall the model looks impressive on the water.

Recently we had a magic motorboat day – the sun was out, and a crisp feel in the air. Seven sailors set off for the winding hole, as you navigated the long left bend so the calm waters changed into a good scale of heavy seas. The waters streamed over the bows and washed the decks, the strong wind put navigation on high alert. The narrows gradually opened which permitted the naval boats to open up. Only one casualty, at a good rate of knots one captain struck an underwater object which caused a bent propeller blade.

Micro Magic model yacht racing at the Over basin is usually quite lively. Finally the summer season competition ended with Kevin retaining his shield and Bryan receiving his plaque winning the B fleet completion. The winter competition is now well underway.

In this present climate all manner of clubs are falling by the wayside. Fortunately, we have good attendances at most sailing gatherings. A most heart-warming sight is to see a gathering of the Clubs junior members enjoying their Sunday morning sailings at Over. I think dads and grand dads are also enjoying themselves.

*Ted Tedaldi*



*Kevin and Brian with their shields*



*Mike Price with his Russian corvette*



*Youngsters enjoying the boats*



# Sailing4Disabled



Welcome to a New Year to all readers of this section on our activity and escapades on the water, hoping you are all keeping well, or as well as can be expected.

Really nothing much to report except for helping two swans and three ducks get a larger space on the canal at Over Wharf in January – the canal had frozen around the poor animals. We launched the Wheely boat and created a channel so that they could regain their freedom and food. Thanks to John and Monica, who have been asked by Swan Rescue to feed them up and grow from ugly ducklings to beautiful swans! Which I must admit, from when they first arrived, they've done a wonderful job.

I was given sad news recently as to the passing of a very loyal past helper when we were a sailing group. This got me to thinking as to what makes a great volunteer – to me this is a person who turns up and gets on with the work in hand and enjoys what they are doing.



Well, Dave Brindle was just that – the story goes...  
... my wife noticed Dave stood outside Argos on a very wet and cold morning, holding a carrier bag and leaning on two walking sticks that were dripping with water. Being the kind woman she is (she told me to say that), she opened the door so that he could be in the dry. I've only come to buy a light bulb for a neighbour, he said. My wife, quick off the mark, asked him if he liked sailing, "never been" David said. My husband and friends are fundraising at Asda, you should go and have a look she said, they have a few sailing boats there.

So, he did, and he asked if he could join us to see what it was like as a member and learn to sail. This he did and involved his wife and the friend, who did not sail but did run a much welcome snack and drinks bar, and then a breakfast bar for the helpers. Dave, being in a wheelchair, took over the task of cooking the bacon, black pudding and eggs (now that's what you call a volunteer!). Dave insisted he did that because he could not help in getting the boats ready.

We had Challenger trimarans (these are a three- hulled boat for a single person), but we devised a seat to fit on the side at Dave's request so that he could take people out for a ride! So after breakfast, Dave used to be hoisted into this newly adapted seat with his lunch and a small radio (when cricket was on, as he was a great player and follower of cricket), every third or fourth trip he would stop for a cup of tea, or take it with him if we were busy, and even sometimes bring the cup back or say it's in the middle of the lake being washed (lost).

The point is that for some 15 years Dave turned up and didn't moan and gave a lot of



# EVERYTHING CANAL BOATS

**FOR ALL OF YOUR BOATING NEEDS**

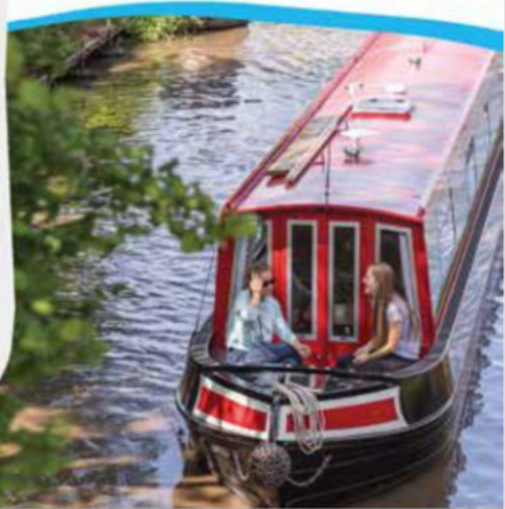
**WE ARE BASED AT  
14 MARINAS  
AROUND THE UK  
AND OFFER THE  
FOLLOWING  
SERVICES**

- Boating Holidays
- Day Boat Hire
- Holiday Cottages
- Caravan Parks
- Chandlery
- Boat Maintenance & Repairs
- Marina Services
- Boat Sales
- Boat Management
- Moorings
- Boat Building

## **FIND OUT MORE**

Go to our website for full details of our services across all areas of our business.

- [www.everythingcanalboats.com](http://www.everythingcanalboats.com)
- Call us: 0330 333 0595





disabled people the chance to forget their disabilities for 30 minutes or so. Oh, I forgot to say Dave at a very young age had been diagnosed with polio which had left him with calipers to help him walk, as for cricket he was a batsman with NO runs to his name (he had a runner to do that for him!) and he was a Paralympic swimmer for Great Britain in the days when it was promoted by Stoke Mandeville. Now that's what makes a great helper/volunteer. Someone who can give something back in return for their past history.

Our memories of Dave, his wife Ruth and friend Nell who are now up there organising their own sailing group. Bless you all and thank you for being part of our lives and being such an inspiration to me and others.

Pete RWB

## H&G Stamps Appeal



Once again, please don't forget that we can turn anything vaguely philatelic (any used and unused stamps, old postcards, old stamp albums etc) into cash for the H&G. So, save all your used stamps, even the common ones, and hand to Janet Moulton or send direct to Steve Bence at:  
35 Lime Road, Southam, Warwickshire, CV47 1EQ.

Steve can also now be reached by email at [stamps@h-g-canal.org.uk](mailto:stamps@h-g-canal.org.uk).

We have recently received some sizeable collections and the sum raised keeps going up and up.

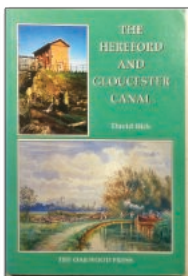
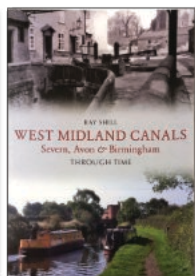
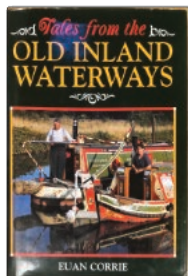


Many of our members are also volunteers, and their contribution to the canal restoration project is greatly appreciated.

There remains much to be done and more volunteers from the wider community would be very welcome.

[www.h-g-canal.org.uk/support/volunteer/](http://www.h-g-canal.org.uk/support/volunteer/) or email to [volunteering@h-g-canal.org.uk](mailto:volunteering@h-g-canal.org.uk)

## Books for Sale



A large selection of good condition second-hand books – plenty more to choose from – available on our online shop.

<https://www.h-g-canal.org.uk/shop/>

All proceeds to support the Trust.

## Regular Volunteer Work Parties

Volunteer work parties regularly convene at restoration sites as listed below. Please contact team leaders to check for latest situations.

### Tuesdays

Malswick

Robert Heigham

[malswick@h-g-canal.org.uk](mailto:malswick@h-g-canal.org.uk)

Oxenhall/Newent Station

Roger Coombs 07801 455779

[oxenhall@h-g-canal.org.uk](mailto:oxenhall@h-g-canal.org.uk)

### Thursdays

Over Basin/Vineyard Hill

Andy Fowler

[overbasin@h-g-canal.org.uk](mailto:overbasin@h-g-canal.org.uk)

Yarkhill

Chris High 01568 615 575

[yarkhill@h-g-canal.org.uk](mailto:yarkhill@h-g-canal.org.uk)

### Ad Hoc

Hereford Roving Team

John Pritchard 01432 272972

[hereford@h-g-canal.org.uk](mailto:hereford@h-g-canal.org.uk)

### Second Sunday each month

Kymin

Ralph Barber 01432 853 086

[kymin@h-g-canal.org.uk](mailto:kymin@h-g-canal.org.uk)

## Wharfinger

EDITION  
**152**

Please submit your copy for Edition 152 to the magazine editorial team no later than 29 April 2022.

Ideas, text and images by email to [editor@h-g-canal.org.uk](mailto:editor@h-g-canal.org.uk).

## Advertisers supporting The Wharfinger

As ever, we are grateful for their support, without which publication of **The Wharfinger** would not be possible. Advertisers supporting the Trust in this edition are;

E B Hayward & Co	1	The Malswick House	26
Beta Marine	2	The Lock Keepers	26
Braunston Brokerage	4	Newent Auto Centre	27
Keyway / 1st Call Plant	12	PrintPlus	27
The Oak Inn Staplow	20	Everything Canal Boats	30
Moat Contracting	24		

New advertisers are always welcome – rates start at £39.00 per issue and include artwork if needed. For information on advertising in **The Wharfinger**, please get in touch with Ginny Birkett – see opposite page for contact details.



# Contact Details



## Chair – Ralph Barber

01432 853086 [chairman@h-g-canal.org.uk](mailto:chairman@h-g-canal.org.uk)

## Land and Environment

[landandenvironment@h-g-canal.org.uk](mailto:landandenvironment@h-g-canal.org.uk)

## Finance – Philip Marshall

01452 760301 [finance@h-g-canal.org.uk](mailto:finance@h-g-canal.org.uk)

## Projects – Eamonn McGurk

[projects@h-g-canal.org.uk](mailto:projects@h-g-canal.org.uk)

## Health and Safety – Ed Helps

07767 897861 [healthsafety@h-g-canal.org.uk](mailto:healthsafety@h-g-canal.org.uk)

## Membership Sec – Tony Higgins

01432 850408 [membership@h-g-canal.org.uk](mailto:membership@h-g-canal.org.uk)

**Mail Order Sales – Janet Moulton** 01432 264366  
18 Coningsby Court, Coningsby Street, Hereford  
HR1 2DF [mailorder@h-g-canal.org.uk](mailto:mailorder@h-g-canal.org.uk)

## Fund-raising with used stamps

Steve Bence [stamps@h-g-canal.org.uk](mailto:stamps@h-g-canal.org.uk)

## Wharfinger Editor – Nick Dymott

07526 254809 [editor@h-g-canal.org.uk](mailto:editor@h-g-canal.org.uk)

## Advertising – Ginny Birkett

01531 820345 [ads@h-g-canal.org.uk](mailto:ads@h-g-canal.org.uk)

## Restoration & Maintenance

[maintenance@h-g-canal.org.uk](mailto:maintenance@h-g-canal.org.uk)

## Over Site Leader – Andy Fowler

[overbasin@h-g-canal.org.uk](mailto:overbasin@h-g-canal.org.uk)

## Oxenhall Site Leader – Roger Coombs

07801 455779 [oxenhall@h-g-canal.org.uk](mailto:oxenhall@h-g-canal.org.uk)

## Malswick Site Leader – Robert Heigham

01452 790498 [malswick@h-g-canal.org.uk](mailto:malswick@h-g-canal.org.uk)

## Yarkhill Site Leader – Chris High

01568 615575 [yarkhill@h-g-canal.org.uk](mailto:yarkhill@h-g-canal.org.uk)

## Kymin East Site Leader – Ralph Barber

01432 853086 [kymineast@h-g-canal.org.uk](mailto:kymineast@h-g-canal.org.uk)

## Hereford Team – John Pritchard

01432 272 972 [hereford@h-g-canal.org.uk](mailto:hereford@h-g-canal.org.uk)

## General enquiries –

6 Castle Street, Hereford HR1 2NL  
[information@h-g-canal.org.uk](mailto:information@h-g-canal.org.uk)

## Want to Help?

The Canal Trust is always in need of new volunteers as our activities continue to expand. We can normally find a use for any skill from gardeners to first aiders, brickies to those willing to help with a shovel, pen or laptop.

The H&G CT also welcomes offers of gifts of good quality used tools and machinery from those who no longer need or cannot use it.

## Want to Join?

Please support our voluntary work by becoming a Member of the H&GCT. A membership form is available online or from our Membership Secretary.

### H&G CT UK Membership Rates

	Annual	Life
Individual	£15.00	£300.00
Joint/Family	£20.00	£400.00
Electronic	£10.00	-
Corporate	£40.00	-

PLEASE NOTE: All subscriptions and donations are as being made under the Gift Aid scheme unless you state that you do not wish us to do this. Payment made by Standing Order greatly assists us and payment remains under your control. All payments please to:  
H&G CT, 6 Castle Street, Hereford, HR1 2NL

## Visit our website:

[www.h-g-canal.org.uk](http://www.h-g-canal.org.uk)

Unless specifically stated opinions expressed are those of the author and do not necessarily reflect the policy of the Herefordshire & Gloucestershire Canal Trust. As a Registered Charity, with defined objectives, we cannot endorse the content of any specific advertisement, product or services.

The Trust accepts no liability for any matter, or advertising contained in this magazine. Reproduction of extracts from the magazine is welcomed provided that full acknowledgement is given.

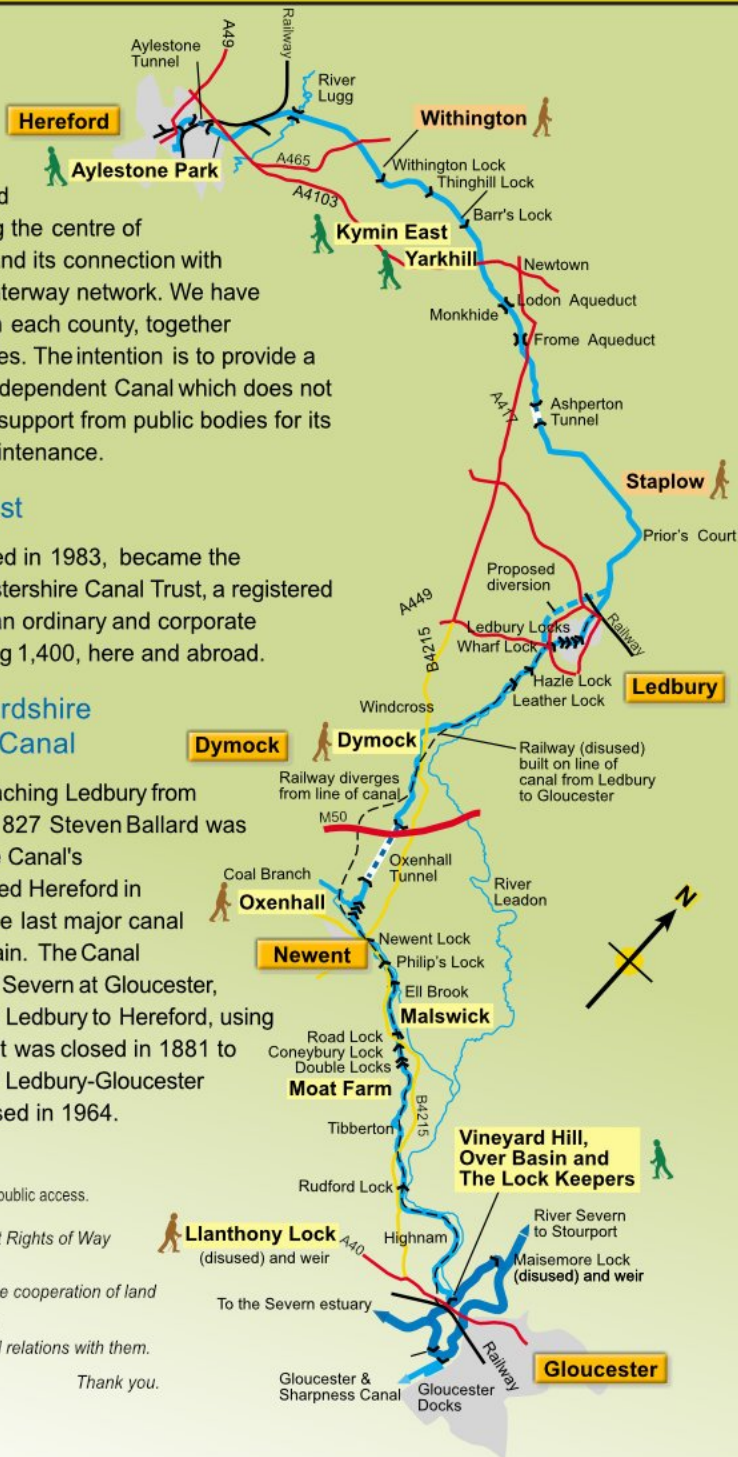
Membership records are computerised. Your entry is available for inspection if you send a SAE to the Membership Secretary.

We try to ensure details of talks/events are correct — please verify with the relevant organiser if travelling long distances.

© 2022 Published by the Herefordshire & Gloucestershire Canal Trust.

The Herefordshire & Gloucestershire Canal Trust is a non-profit distributing company limited by guarantee [No.2704407] and is a registered charity [No. 1010721]. The Wharf House Company Ltd [No. 4627931] is part of the Herefordshire & Gloucestershire Canal Trust Ltd group of companies.

Registered Office: Beaumont House, 172 Southgate Street, Gloucester, United Kingdom, GL1 2EZ.



Map based on original by Martin Ludgate, Canal Boat Magazine.