

THE HEREFORD WHARFINGER-



THW

THE JOURNAL OF THE HEREFORDSHIRE AND GLOUCESTERSHIRE
CANAL SOCIETY



25p

(FREE TO
MEMBERS)

SUMMER 1986



12
NO

L

HEREFORDSHIRE AND GLOUCESTERSHIRE CANAL SOCIETY

President:

Mr Peter Price, Tibberton Court, Tibberton, Glos.

Vice-Presidents:

Major Robert Barnes, Highway Cottage, Lyde, Hfds.

Mr David Bick, The Pound House, Market Sq., Newent.

Hon. Consultant Structural Engineer:

Ronald Munden, BSc(Eng), C.Eng, M.I.Struct.E.,
96 Aylestone Hill, Hereford.

Hon. Archivist:

Post Vacant.

Committee:

Tony Austin-Bailey (Chairman)
7 Gaisford Close, Hereford (Hereford 269704).

Mike Potts (Vice-Chairman)
3 Cranstone, Upper Breinton, Hereford (Hereford 56392).

Robin Andrews (Secretary)
20 Tower Road, Hereford (Hereford 268854).

James Dunn (Treasurer)
Pool Cottage, 5 St. Ethelbert St., Hereford (Hfd. 274106)

Nigel Jefferies,
19 Wilcroft Park, Bartestree, Hereford (Hereford 850661).

Richard Morley,
New House, Rocky Lane, Shobdon, Hfds. (Kingsland 470).

John Startin,
Conifers, Little Birch, Hfds. (Golden Valley 540559).

Peter Woodfield,
60 Whittern Way, Hereford (Hereford 275244).

Hereford Wharfinger:

Mike Potts (Editor)
3 Cranstone, Upper Breinton, Herefordshire.

| | | | | | | | | | | | | | | | | | | | |
|---|---|---|---|---|---|---|---|---|---|---|---|---|---|---|---|---|---|---|---|
| A | M | O | N | T | G | O | M | E | R | Y | L | B | R | E | N | A | S | I | E |
| F | Y | S | G | W | T | Y | R | T | N | E | V | O | C | G | U | F | D | R | T |
| S | H | R | R | O | A | P | I | R | R | S | R | A | D | P | J | E | E | D | H |
| N | W | H | A | C | C | L | E | S | F | I | E | L | D | O | E | W | X | P | A |
| D | V | C | N | P | K | A | E | I | D | B | N | M | F | C | A | A | F | C | T |
| N | E | U | D | Q | N | O | I | N | U | E | R | I | H | S | P | O | R | H | S |
| O | O | X | U | C | N | X | D | B | L | L | A | N | H | E | A | N | E | Y | E |
| T | R | P | N | M | D | J | L | L | Z | A | D | S | E | L | E | R | E | I | R |
| I | I | F | I | A | I | D | O | B | R | O | F | T | A | R | T | S | B | R | O |
| E | D | H | O | R | G | G | T | A | B | X | D | C | H | T | R | M | L | C | F |
| R | G | B | N | D | N | E | F | E | R | E | O | S | V | E | O | X | A | V | K |
| C | E | A | S | A | S | H | B | Y | C | J | B | I | M | W | C | O | N | G | A |
| U | A | P | L | D | L | E | I | F | S | R | E | D | D | U | H | Q | I | R | E |
| V | C | L | H | E | R | E | D | C | A | S | N | B | A | A | D | T | R | O | P |
| A | G | E | D | R | O | F | X | O | H | A | N | S | G | S | A | L | Q | U | B |
| H | L | F | X | O | N | N | C | O | T | R | H | P | T | Y | L | A | B | D | W |
| P | R | I | T | R | N | X | W | N | S | T | D | Y | B | L | E | S | T | A | R |
| L | A | N | C | A | S | T | E | R | O | F | G | A | H | K | M | A | Y | I | T |
| A | N | R | I | S | A | R | R | N | J | A | E | T | S | G | C | W | R | B | H |
| N | E | A | M | A | T | B | R | I | D | G | E | W | A | T | E | R | E | O | E |

THE CANALS TO FIND ..

EREWASH

ASHTON

MONTGOMERY

CALDON

LANCASTER

LLANGULLEN

ROCHDALE

OXFORD

TRENT AND MERSEY

PEAR FOREST

MACCLESFIELD

RIPON

GRAND UNION

ASHBY

STRATFORD

BRIDGEWATER

HUDDERSFIELD

SELBY

COVENTRY

SHROPSHIRE UNION

FORTHCOMING EVENTS

SUNDAY 22nd JUNE 3.00 pm.

Members are invited by the new owner Mr Michael Peach to the Tunnel House at Munsley for the unveiling of a society plaque supplied by Nigel Jefferies.

It is hoped that the plaque will be unveiled by Mr Stephen Ballard grandson of the canal architect Stephen Ballard.

The Tunnel House which was until very recent in a very poor derelict state has been restored in its original form, to its former glory.

The Tunnel House can be found by taking the road to the Canon Frome cricket ground and driving just past its entrance.

RESTORATION DAYS... YOUR HELP WOULD BE APPRECIATED
MONKHIDE - CREWS PITCH

SUNDAYS.. JUNE 1st JULY 6th AUGUST 3rd SEPTEMBER 7th
ALSO EXTRA HELP REQUIRED ON OUR WEEKS
WORK IN. SEE RESTORATION NEWS.

SUNDAY 31st AUGUST

One day Narrowboat handling course for beginners. See ~~next~~ page NINE.

SUNDAY 21st SEPTEMBER

Tour by mini coach of the Birmingham canal navigations. James Dunn will be our guide for the day. There were more canal in Birmingham than in Venice, this tour will give you the chance to see some of the lesser known as well as the famous canal sites on these once very busy canals.

The cost will be £4 - £5 per head. Further details from James Dunn. (See inside front cover.)

The Inland Waterways Association

WELSH WATERWAYS FESTIVAL RALLY 1986

PONTYMOILE PONTYPOOL 19th & 20th JULY

On the Monmouthshire and Brecon Canal.

I W A GLOUCESTER BRANCH details- Marilyn Slynn
Sunday 13th July Gloucester 411040

Cutting to the Black Country museum and the Dudley Canal Tunnel.

EVERY DROP
HELPS.

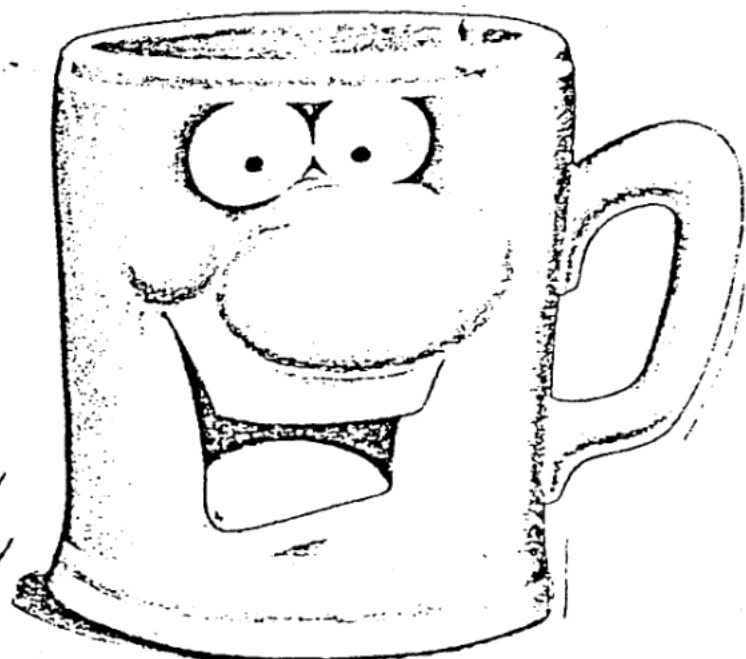
HELP AT OUR
RESTORATION
RALLY.

ALL
WELCOME

AUGUST
4th - 8th

HELP

DRIVE A
DUMPER
OR
EVEN MAKE
THE TEA
IT ALL
HELPS
RING: TONY
AUSTIN BAILEY
ON
HEREFORD
269704



JOIN THE ROTA BEFORE 11/6/85
PLEASE

Monmouthshire & Brecon Canal
19-20 July 1986

WELSH WATERWAYS FESTIVAL RALLY 1986

DO YOU OWN A TRAILABLE BOAT - OR A DINGHY - OR A CANOE?
IF SO, THE FIRST-EVER WELSH WATERWAYS FESTIVAL RALLY IS JUST FOR
YOU!

The Welsh Waterways Festival Rally 1986 is being organized on
the beautiful Monmouthshire and Brecon Canal, part of which runs
through the picturesque Brecon Beacons National Park, by the
Monmouthshire, Brecon & Abergavenny Canals Trust, in association
with the Inland Waterways Association and local canal societies
and boating clubs.

The event provides a unique opportunity to enjoy the splendours
of what promises to be a really exciting event and to help the
Canals Trust in its objective of restoring navigation throughout
the length of the former Monmouthshire Canal.

Considerable interest has already been shown by local and
visiting boaters and enthusiasts, so why not join them?

The festival rally will be one of the major waterway events of
1986 and we hope you will want to be there.

Boat entry forms, and other information, can be obtained from
the Entries Officer:

Mrs Geraldine Fanning

42 Tennyson Road

Penarth

South Glamorgan, CF6 1RZ

(telephone: Penarth [0222] 708267)

Rally Chairman: Frank Lynd

Organized by The Monmouthshire, Brecon & Abergavenny Canals Trust Limited

A non profit-distributing company limited by guarantee

Registered Charity No 515879

Rally Director: David Fann

Registered No 1841029

Affiliated to the Inland Waterways Association

SOCIETY DRAW.

We wish to thank members for their support in the selling of draw tickets recently.

The draw organised by Peter Woodfield raised a very useful sum towards our restoration programme.

We wish to thank the companies and people who kindly donated the prizes;

RED LINE BOATS OF GOYTRE WHARF Nr ABERGAVENNY
BRIGGS SHOE SHOP OF HEREFORD

SYMONDS & Co WIDEMARSH St HEREFORD (CLOTHIERS)

H SAMUEL HIGH TOWN HEREFORD (JEWELLERS)

TUPSLEY FREEZER CENTRE HEREFORD

BULKERS OF HEREFORD (CIDER COMPANY)

SPORTSGEAR & WEAR St OWEN St HEREFORD

JENFINGS (SADDLERS) EIGN GATE HEREFORD

ALAN MAILES EIGN GATE HEREFORD (BUTCHERS)

JESSONS EIGN GATE HEREFORD (CLOTHES, CAMPING EQ)

JAMES LUNN (CANAL SOCIETY)

WINNERS

The first prize of a days cruising for up to six people on the beautiful Brecon and Monmouthshire canals was won by M SCUDDER OF HEREFORD

Other winners were;

Mr HILL of Carey, S F Price Hereford,

Miss D Barrett of Essex, G E Atkins of Hereford,

A J Ward of Ledbury, M E Potts of Hereford,

S W Morgan of Monmouth, B L Morris of Bartestree,

T Austin Bailey of Hereford

We thank you all for your support.

Peter Woodfield



8 CAN-AL-ING

DRINKING WITH THE WOOLLYBACKS

It's at this time of the year that thoughts naturally turn away from the bleakness of winter towards those heady days of summer, when most people will be taking holidays for a week or two. Many will still be undecided about their venue this year, and it is to those people that this article is chiefly addressed. If you're fed up with being poisoned, mugged or sunstroked on the Costa Packet, a credible alternative could be almost literally on your doorstep, because the canals and rivers of Britain offer fine opportunities for relaxed exploration of the countryside and, of course, for sampling a wide range of beers in a variety of attractive pubs.

Yes, imagine it - travelling gently along a rural waterway out into those blissful isolated regions where The Hairy One means Billy Connolly and Old Bean is something to be found in British Rail buffets. This is what myself and six mates contemplated

last year and it convinced us to book a week's holiday on a narrow-boat with a well established company at Bunbury, Cheshire. Having supped pleasantly, but not extravagantly, in Chester and Tarporley during the lunchtime, we arrived at Bunbury Locks (just off the A51, three miles south-east of Tarporley) at 4 p.m. on the Saturday of our departure.

After receiving instruction in the art of operating locks and other relevant techniques of boat-manship, we finally set forth on the Shropshire Union Canal shortly after 6 p.m., heading southwards towards Nantwich, our evening stop, 2½ miles and one collision later, we pulled in to the canal bank and moored outside the popular canal-side pub, the Barbridge Inn. This is a well designed modern building, serving Boddingtons ales (H) and also a delicacy listed as "Beef in Boddies beer". Suitably refreshed, we progressed the further 3½ miles to Nantwich, where we moored by the

aqueduct over the A534. Five minutes walk down this road brought us to the Oddfellows Arms, a tastefully refurbished pub, selling Ind Coope bitter (H).

A further five-minute walk, crossing the River Weaver, took us to the centre of Nantwich and the Union Inn hove into view. This is a traditional town pub with a good range of Marstons ales (H). Bearing right along Beam St. upon leaving this establishment, we soon arrived at the Red Cow, a venerable old Robinsons pub serving handpumped bitter and mild. By now suitably merry, we were nevertheless able to locate the Bowling Green, hidden away on a footpath behind the prominent Nantwich Church, to round off the evening with a couple of pints of Wilsons beers (H). We then returned to our barge for a good night's sleep to reinvigorate ourselves for the following day's exertions.

Making an early start, we set off for a six-mile trek to Audlem, where a series of fifteen locks awaited us. Operating locks proved to be a simple task and after working through the first three, we moored outside the Shroppie Fly, a canal-side pub converted from a warehouse, which serves Draught Bass (H). About 200 yards further down the tow-path, we enjoyed Marstons beers (H) at the Bridge Inn and on turn-left out of the front door, we soon arrived at the Lord Combermere, an interesting, rambling old pub with McEvans 70/- (H). Unfortunately, some of this never reached our lips as our table in the beer garden suffered an untimely collapse. Undeterred, we ventured across the road to the Lamb, and Ansell's pub where the only real ale available was Tetley bitter (H). Here, I was gratified to receive a beer towel from the landlord to match my "Tetley Bittermen" t-shirt.

We then embarked on noon haul through twelve Audlem locks at Adderley, which mile stretch to Marstons busiest section of the time we reached were in the mood for which we found after walk west from the town. The Star and our first ports of Marstons ales (E) bitter (H) respectively followed the main A53, around to the Castle, a busy pub from Ansell's and I and concluded the road in the Kiln, particularly good whose well kept by the Pedigree, was by our thirsty lips.

Monday morning brought leisurely seven-mile journey into the Staffordshire countryside, now, we had deduced cruise along happily but that it was delays (such as ourselves!) by arriving around an average speed of 3 m.p.h. were taking about negotiate. Our the day was to h at the Haberdaash house in the ham ten minutes walk canal. Unfortunately did not open until we had arrived at twelve, our dis were compelled to barge for a one-to the Wharf Inn canal-side pub at Burtonwood beers to some very pal

A further mile or we reached the basic canal-side pleasant beer spent the remaining time session, a wide range of comprising Ansell Pedigree and W as well as dra Fortified by 6X, we forged eleven miles d

a Sunday after-
ne remaining
plus five more
made the six-
ke: Drayton the
our route. By
Drayton, we
or refreshment,
or a half-mile
canal into the
the Lamb were
call, serving
and Tetley
lively. We then
world, the old
Elephant and
serving beers
and Coope (H)
evening down
Arms, a
Marstons pub,
er (H), notably
well appreciated
the group.

gan with a
ile, five-lock
deeply wooded
tryside. By
ed that we could
ily at 4 m.p.h.,
afar to allow for
rounding our-
ng schedules
travelling
while locks
ten minutes to
first pint of
we have consumed
Arms, a free
let of Knighton
east of the
nately, this
all 1 p.m. and as
t five past
runtled party
to return to the
mile trip down
a traditional
Sheldon, serving
(H) in addition
atable food.

n, at High Offley,
Anchor Inn, a
free house with a
arden, where we
nder of our lunch-
discouraged by the
atters available,
lla, Ruddles,
worth 6X (H),
ght cider.
r rare taste of
ahead a further
uring the after-

noon to Wheaton Aston, where we
turned the barge around and
moored for the night outside
the Hartley Arms, a canal-side
Banks' pub with a comfortable
modern interior. On the other
side of the village, we found the
Coach and Horses, another Banks'
pub, but this time of a more
spartan, conventional nature. In
Banks' tradition, both pubs use
electric pumps.

The road leading north from the
village centre led us to a real
gem of a pub, the Fox Inn at
Marston. There were probably
more customers in the pub than
inhabited this isolated hamlet,
and it wasn't difficult to under-
stand why. There were beers
from Ruddles, Marstons,
Wadworths, Woods, Lloyds and Five
Towns (H) and the latter three
provided perfect examples of
fruity midlands ale, although
they were not entirely to the
taste of all my companions.
Despite a prolonged wait for the
tasty food, the 1½-mile walk from
Wheaton Aston had been well justi-
fied, I thought.

Heading back north on the Tuesday,
our first call was to Church Eaton,
two miles by barge and a half-mile
walk, where we were able to sample
Wem beers (E) at the Royal Oak as
archetypal mistic characters dis-
cussed the finer points of harvest-
ing crops. A couple of miles
further along the canal, we
arrived at Gnosall, where we again
enjoyed Marstons beers (H), at the
Boat Inn, as we played bar
billiards with all the enthusiasm
befitting novices to the game.
In the evening, we halted at
Market Drayton once again, calling
at the Crown, a cosy pub with
Marstons beers (H) and the Sand-
brook Vats, a highly popular old
pub serving McEvans 70/- and
Youngers Scotch Bitter (H), also
revisiting the Lamb and the
excellent King's Arms.

Wednesday's schedule was a reverse
of Sunday's, as we spent a lunch-
time at Audlem once more and moored
at Nantwich in the evening. Apart
from returning to the Oddfellows
Arms, the Union and the Red Cow,
we also patronised the Lamb, a
plush old hotel in Hospital St.,
serving Wem bitter (E), the Vine,
a Tudor-style pub further down the

street dispensing Burtonwood Beers,
also via electric pumps, the Wick-
stead Arms, a basic locals' pub

with Boddingtons beers (H) and
finally the Willram Arms, where
we sampled cask John Smiths bitter
for the first time, having spotted
the handpump sign in the window by
chance.

On the Thursday, we manoeuvred our-
selves (with considerable diffi-
culty) onto the Llangollen Canal
at Hurleston, 2½ miles north of
Nantwich. Six miles along the
canal, after experiencing the

novelty of our first hand-operated
lift bridge, we arrived at the
Dusty Miller, a former canal-side
mill building converted into a
rather posh pub-cum-restaurant,
serving Robinsons bitter (H).
Just down the road, the Cotton
Arms provided Greenalls beers (H)
in a more relaxed atmosphere, with
the added bonus of another bar
billiards table. Two miles
beyond Wrenbury, and a ten-minute
walk from the canal, we reached
Marbury, where the Swan dispensed
Greenalls beers, augmented by Wem
bitter (H).

Four miles further down the canal,
we encountered our last major
obstacle, the Grindley Brook
staircase locks, before turning
around, mooring up and setting off
on the two-mile hike down the A91
into Whitchurch. Our first pints,
and a delicious meal, were consumed
in the Holly Bush, a roadside Wem
pub on the outskirts, where the
enjoyable Pale Ale was available.
In the centre, we sampled Burton-
wood beers in the sedate Hotel
Victoria and the products of the
ill-fated Border brewery at the
fine Old Town Hall Vaults, birth-
place of the composer Sir Edward
German, before downing our second
pints of John Smiths at the White
Bear. We then moved on to the
Bull Ring Vaults, another basic
Banks pub, with the only electri-
cally pumped beer in our hand-
pumped-dominated evening, followed
by the Old Eagles, a friendly,
traditional Marstons pub, before
finishing in the Highgate, a rather
trendy establishment purveying
Wilson's ales. — PTO

CAMRA

KENNETT AND AVON TOUR-CRUISE
JUNE 8th PROGRAMME.

Despite a rather poor response a party of twenty five of us will depart from Leominster & Hereford aboard the coach to Bradford on Avon.

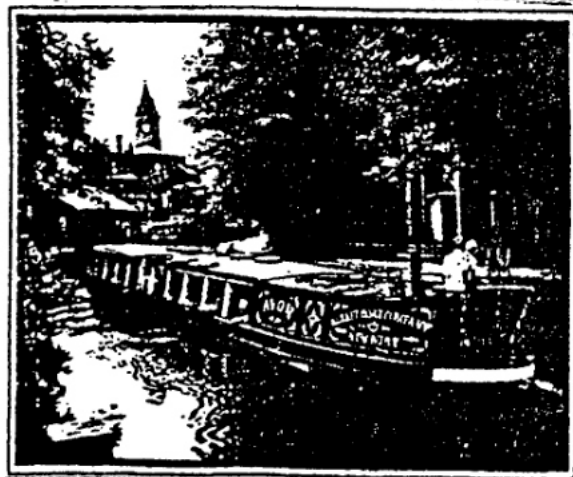
Here we will board one of the canal trusts narrowboats for a two hour cruise. We will cruise along a fine restored stretch of this beautiful canal. Returning to the Wharf where we will picnic.

We then travel on to the Caen Hill flight of locks at Devizes. This flight is presently under restoration. Here we collect our guide for the afternoon. We will view the work going on by the trust and visit their canal centre at Devizes.

Our coach will then take us back past Bradford on Avon to the pumping house at Claverton.

After viewing the huge water powered pumping house we will depart on our journey home.

XXXXXXXXXXXXXXXXXXXXXXXXXXXXXXXXXXXX



"Can-ale-ing"

Returning via Marbury and Wrenbury on the Friday lunchtime, we utilised our mooring pegs for the final time back at Bunbury, pausing only briefly at the Barbridge Inn. Our drinking pleasure had not finished, however, as a one-mile walk into Bunbury Village brought us to the superb Dysart Arms. Thwaites beers are handpulled in the shadow of the imposing church, and so our voyage was over, but on the way home, plans were already being formulated for this year's holiday. Consequently, we have booked a narrowboat to explore the River Severn this summer, and to those of you who are preparing to seek "Spanish tummy" again this summer, we say "The best of British"

Robert Ruddock

(H) = Handpump (E) = Electric pump



CAMRA

more information can be

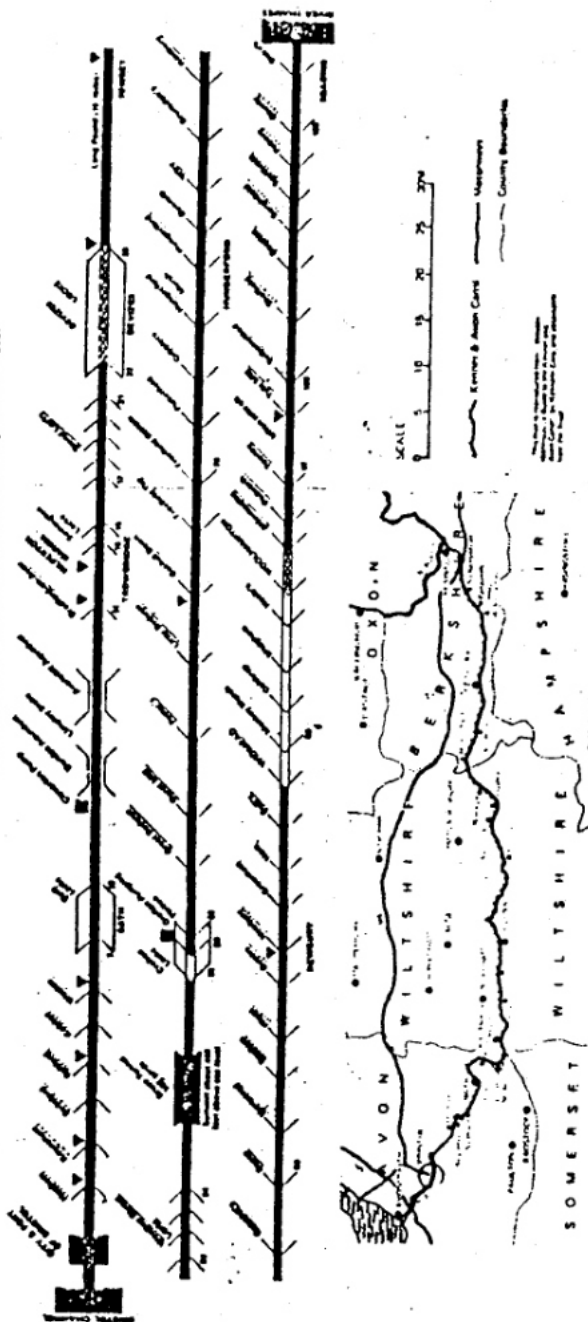
obtained from CAMRA HQ, 34 Alma Road, St. Albans, Herts. AL1 3NH

The Kennet and Avon Canal

DIAGRAM OF NAVIGATION. AUGUST 1984

Diagram not to scale

The fact that a lock is shown as restored does not necessarily imply that it may now be in use.



(For further information, please see overhead)

1. The first of these is the fact that the
 2. Government has been unable to secure
 3. the necessary funds to carry out its
 4. policy of non-interference.

We stock Homebrew

BREWMAKER

*We stock the largest range
of wine and beer requisites in Hereford*

Roto kegs
Vinamat and Vigneron Kits
Vins and Brewmaster products

All that's best in homebrewing

D. SCOTT

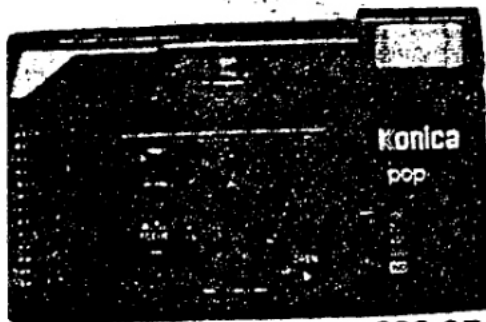
CHEMIST

10 KING STREET, HEREFORD

TELEPHONE (0432) 266800



Konica POP-AF



£69.95

When you see the picture you want in the frame, just press the shutter. Don't stop to worry about focusing or setting exposure. The POP-AF does it all for you. Complete with case and batteries.

No more fuzzy photos

CAMERA CRAFT

PHOTOGRAPHIC CENTRE

53 ST. OWEN STREET
Hereford (0432) 279123



Konica TOMATO

£49.95

FILM OFFERS - TWIN PACKS

| | |
|--------------------------------|-------|
| 2 HR100 110 - 126 - 35mm x 24 | £2.75 |
| 2 AGFA MAXI 35mm, 27 Exposures | £3.40 |
| 2 FUJI | |
| 2 HR100 35mm, 24 Exposures | £3.75 |
| 2 HR100 35mm, 36 Exposures | £4.77 |
| 2 HR100 110, 24 Exposures | £3.35 |
| 2 DISC FILMS, 15 Exposures | £3.20 |
| 2 DISC FILMS, 30 Exposures | £5.95 |
| 2 HR200 35mm, 24 Exposures | £3.95 |
| 2 HR200 36mm, 36 Exposures | £5.12 |

RO SLIDE FILM INC. PROCESSING

| | |
|------------------------------|--------|
| 2 100 ASA 35mm, 24 Exposures | £8.95 |
| 2 100 ASA 35mm, 36 Exposures | £12.40 |

Further Discounts on Larger Quantities

On Sunday 31st August the Society has arranged a 1-day Course in Narrowboat Handling with Mr C. Penny, who runs courses based in Worcester.

The course is intended for anyone who has "stood and stared" at passing boats on rivers and canals, and the aim is to show you how to handle a narrowboat confidently and safely. If you are considering a hire boat holiday you will enjoy that holiday a great deal more after a day learning the basic techniques. You don't have to be thinking of a narrowboat holiday to join us for the day (but we will not accept liability if you do get "hooked"!) - if you just want a day out with a difference you will be more than welcome.

The boat is a 39' by 6'10" diesel-engined all steel narrow boat built in December 1980. Tiller steering with open "cruiser style" rear deck. The course will cover: general introduction; basic safety - a few "do's and don'ts"; handling ropes; basic diesel engine checks and starting techniques; casting off and getting under way; basic steering - different techniques for *narrow canals *broad canals *rivers; how to stop!; cruising speed; mooring - the right and wrong way; more casting off techniques - in strong winds/currents/single-handed; detailed inspection of a lock - basic safety - how to operate; different types of locks *narrow *broad *flights *staircases *manned locks; man overboard - what to do and what not to do; going aground - how to get afloat again; clearing the 'prop' - a introduction to the weed hatch; more advanced steering - confined spaces - passing other boats; winding, or how to turn around; navigating - tunnels - lift/swing bridges - tidal waters; "housekeeping" - taking on water - changing gas cylinders - toilet pump-out - pumping bilges - greasing stern gland; problems - low water levels - jammed lock gates/paddle gear; how to choose a hire base.

Cost: £15 per person (includes transport to and from Worcester but not refreshments). Depart Hereford at 8.30am and return at 6.00pm approx.

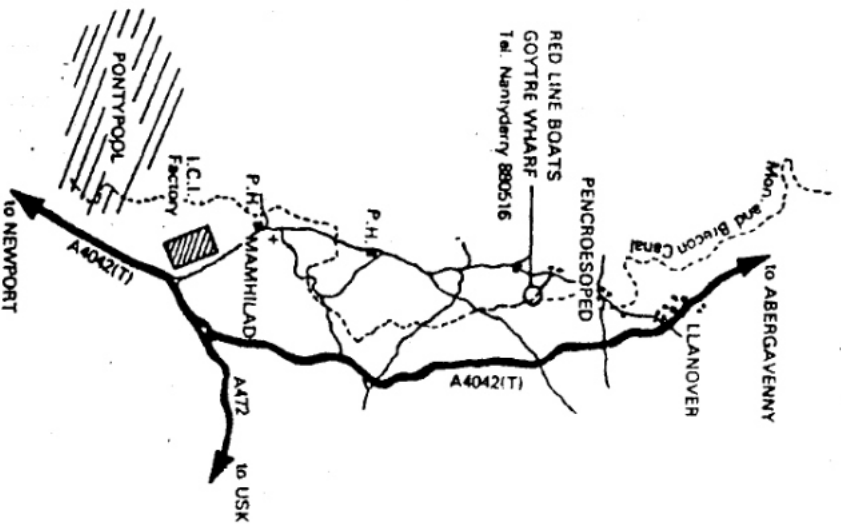
THE NUMBERS WILL BE LIMITED TO 4 PERSONS, SO EARLY APPLICATION IS ADVISED.

Send your name, address and telephone number with a £6.00 deposit (non-refundable) to: Robin Andrews, Secretary, HGCS, 20 Tower Road, Hereford (cheques payable to Herefordshire & Gloucestershire Canal Society). Enquiries Hereford 268854.

BOATING

on the Brecon-Abergavenny Canal

DAILY AND WEEKLY HIRE



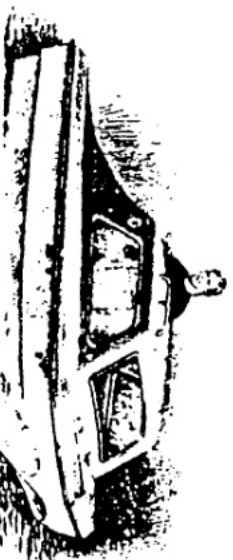
Red Line Boats

GOYTRE WHARF, LLANOVER, LLANOVER, ABERGAVENNY

GWENT NP7 9EW

Brecon-Abergavenny Canal

ALL PRICES INCLUDE FREE FUEL AND V.A.T.

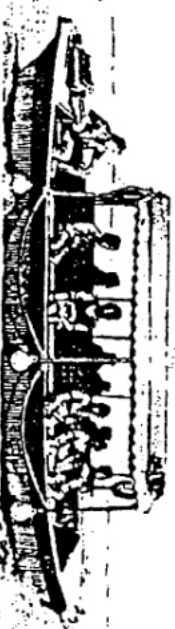


SELF DRIVE DAY BOATS

4-SEATER CRAFT FOR HIRE

Day 9 a.m. to 5 p.m. £21.50

HALF DAY 9 a.m. to 1 p.m. 1 p.m. to 5 p.m. £15.00



RED DRAGON TRIP BOAT

12-SEATER SELF DRIVE

Day 9 a.m. to 5 p.m. £33.00

HALF DAY 9 a.m. to 1 p.m. 1 p.m. to 5 p.m. £22.00

POPPY TRIP BOAT

8-SEATER SELF DRIVE

Day 9 a.m. to 5 p.m. £27.00

HALF DAY 9 a.m. to 1 p.m. 1 p.m. to 5 p.m. £18.50

* All trips and day boats can be booked in advance — no deposit required. Phone Nantydyery 880516

Please book in advance. If it rains, please to say the boat will not be required and book again when the weather improves.

RESTORATION NEWS

RESTORATION RALLY
MONKHIDE-MONDAY 4th-
FRIDAY 8th AUGUST

inclusive,

During this week we hope to excavate the length of canal from Crews Pitch to the Skew Bridge.

We have been kindly offered the free use of a large excavator by Mr Colin Stone Fewings. Our costs involved will be for operator, vehicle movement and dumper hire which will save us greatly.

This will be the second time this section has been excavated but it is hoped to have it dredged to its full width and depth and to enable us to finish the restoration of this section early in 1987.

In order for us to make full use of the week we need volunteers for work.

We need people who can spare us a few days or a day, an afternoon or morning even a few hours.

We need dumper drivers, grass cutters, fire makers general helpers, someone to make some tea or prepare a simple meal. If you can help us even for a few hours only please contact Tony Austin Bailey who is making a rota up. (Tel no. inside front cover.)
If possible please let us know by the 11th June to form our ROTA.

MONTHLY WORK PARTIES.

little progress has been made in the past couple of months as the attendance figures have been rather poor. We have cleared some of the timber from the canal bed, we have been marking out and getting preparations ready for August.

Please come along to the working parties all help is gratefully received.



SALES & GIFTS

BOOKS

- "THE HEREFORD AND GLOUCESTER CANAL"
by David E Bick £3.95
- "Walking Canals"
by Ronald Russell £5.95
- "Stoudwater and Thames and Severn Canals
Towpath guide" By Michael Handford & David
Viner £5.95
- "The Diary of a Rowing Tour From Oxford To
London in 1875" by Howard Williams. £4.50
- "The Thames and Severn Canal"
by Humphrey Household. £9.95

KEY RING

- Wild Bird motif, with address pad 50p

MAPS

- "A new map of the Kington-Leominster-
Stourport canal" Geo R Kendrick. £1.95

POSTCARDS (Historic)

- The Docks Lydney. 10p
- The Docks Gloucester. 10p
- The Wave in Gloucester Docks. 10p

ILLUSTRATED NOTELETS

- Monkhide Skew bridge. Pack of
ten complete with envelopes. £1.00

SOCIETY GREETING CARD with envelope
Hereford Canal Basin picture.

35p

Please add postage to your order.

Books 50p each, other items 50p total.
Maximum postage £2.00. Refund if less.

Orders to; Mike Potts or N Jefferies.

SUPPORT THE SOCIETY.