

# THE HEREFORD WHARFINGER



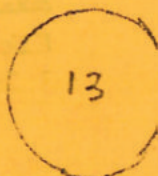
THW

THE JOURNAL OF THE HEREFORDSHIRE AND GLOUCESTERSHIRE  
CANAL SOCIETY



(FREE TO  
MEMBERS)

5 AUTUMN 1986



# SALES

"THE HEREFORD AND GLOUCESTER CANAL"  
Hard back book by David B Bick £3.95  
The book of our canal.

---

"THE DIARY OF A ROWING TOUR FROM OXFORD  
TO LONDON IN 1875" By Howard Williams £4.50  
Including a detailed navigation of our  
canal.

---

Sold bird motif Key Ring & address pad 50p  
CANAL TEA TOWEL. A selection of tea towels  
with various canal scenes. each... £1.95

---

Post cards. LYDNEY DOCKS, GLOUCESTER DOCKS,  
THE WAVE IN GLOUCESTER DOCKS. 10p each

---

ILLUSTRATED NOTULETS. (Monkhide Skew Bridge)  
Ten complete with envelopes for £1.00

---

BUY YOUR CHRISTMAS CARDS NOW.....  
LARGE SOCIETY CHRISTMAS CARD with envelope  
picture Hereford Canal Basin. Each 35p

---

ILLUSTRATED MAP of the KINGTON-LEOMINSTER-  
CHICUPPORN canal by Geo R Kendrick. £1.95

---

CANAL PICTOGRAPHS. Oxenhall Lock Cottage,  
Canal Lock (location unknown), Canal Wharf  
and Lock (location unknown).  
Approx 6" x 8" mounted on card £3.50 each.  
Or in gilt glass frame £6.00 each.

---

All sales; Peter Woodfield or Mike Potts see  
inside front cover for no. & address.

Please note carriage extra. We will try and  
deliver where possible at no charge.

CANAL HISTORY

The three pictures in this edition are copies of photographs kindly loaned by Mr Basil Butcher of Hereford. We presume that they are in fact pictures of the Hereford and Gloucester canal.

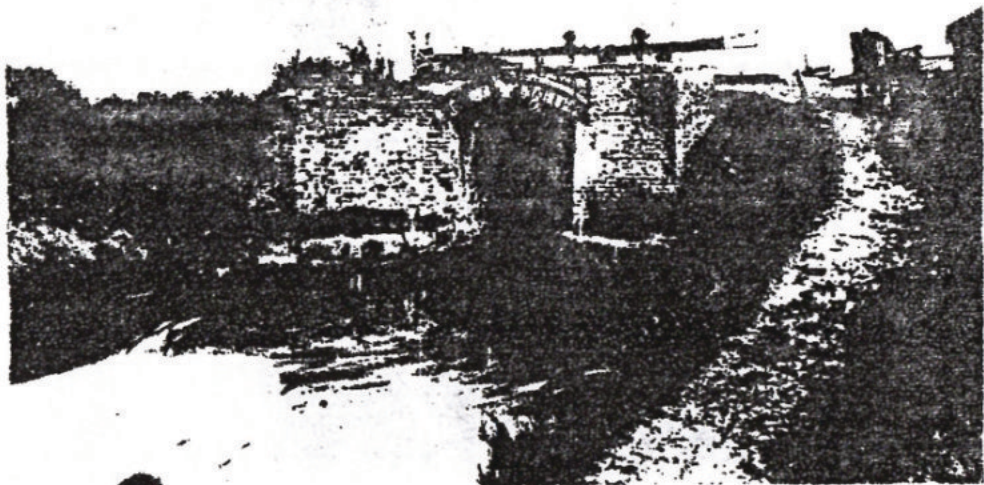
The one picture is Lock Cottage at Oxenhall but we do not know where the other two are. If you think you know where they were or if you know someone who might recognise them please let me know.

The Lock and bridge picture certainly looks the style used on the canal and looking at the landscape it may be somewhere between Newent and Gloucester, but this is only a guess.

The Wharf may perhaps be at or Near Ledbury. Copy's of these photographs are available for sale, see the back sales page.

These pictures will be on show at CAMFRA CRAFT 53 St OWEN STREET HEREFORD for a while along with two paintings of the Skew Bridge kindly given by Mr Arthur Rettalick. See elsewhere in this edition.

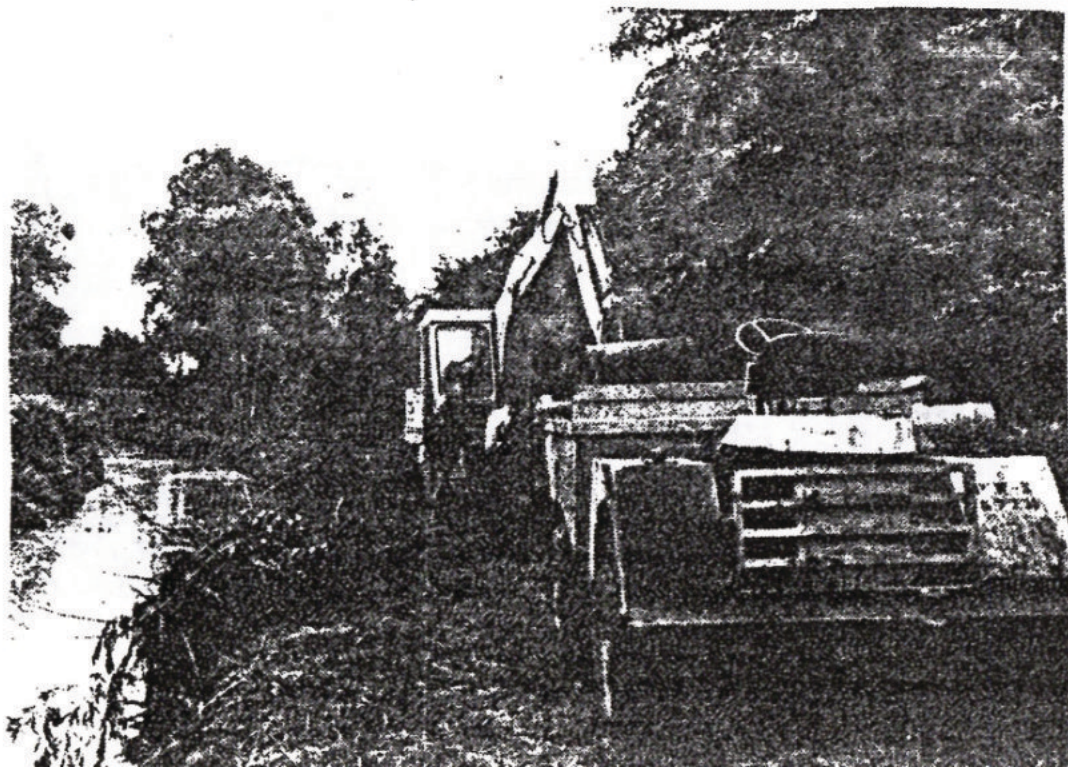
EDITOR



Roy, our digger driver, did an excellent job working in very difficult conditions, often unable to see where his bucket was digging. Our 3-ton dumpers were very useful with their sharp turning and were very manoeuvrable yet still able to carry a good quantity at a time. It was hard to keep pace with the rapid excavations of the digger as only three or four bucketfuls would fill a dumper.

We saw quite a lot of wildlife during our work and it is hoped that by a waterfilled reservoir will provide an ideal habitat for many more species. Herons, coots, ducks and even a kingfisher were seen, and at one point the digger picked up a grass snake which slithered off gracefully into the undergrowth.

Our next job will be to tidy up the towpath, and then to set about restoring the towpath beneath the Skew Bridge. We will also have to complete the dredging up to the main road. It is hoped to have most of this completed before our Open Day next June. We will need a lot of help to finish these jobs so please if you are able come along and give us a hand at our work parties.



## CANAL HISTORY



### OXENHALL LOCK AND LOCK COTTAGE.

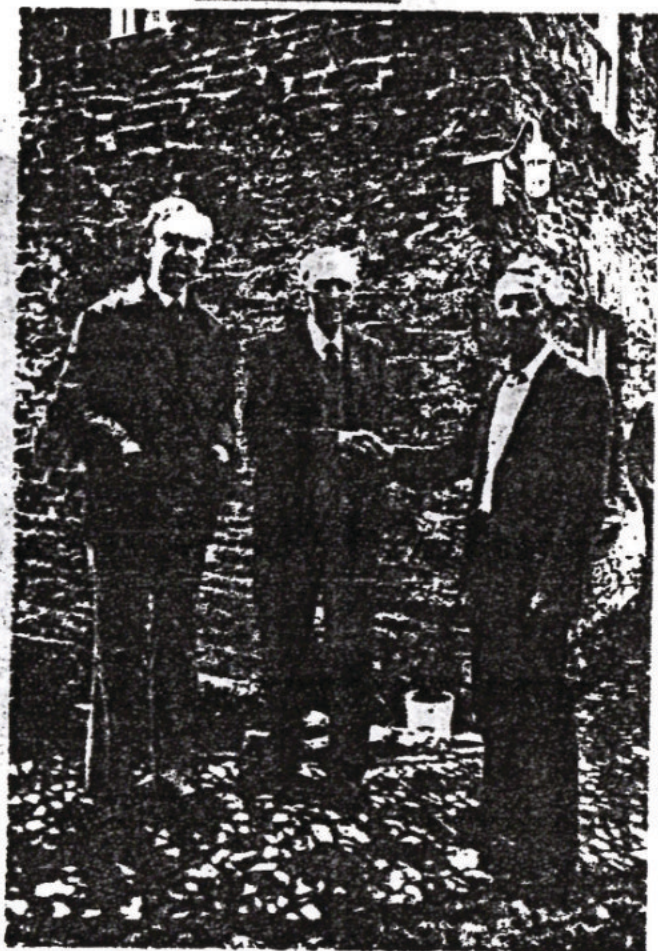
As it appears in David Bick's excellent book on the Canal. The Cottage still stands and is owned by one of our members. The lock chamber also remains and even part of the gate structure but the next lock has disappeared completely.

---

### 1984 and All That!

Apologies for the date on the cover of the last Wharfinger. It must have been the bottle of cider in the Editor's office that did it. Please amend your copy to read 1986.

## RESTORATION



Sunday June the 22nd saw the unveiling of a society plaque on Tunnel House Asperton.

The house until this year was derelict and I for one never thought I would ever see it other wise. Mr And Mrs Peach has restored it to its former glory and invited us to the unveiling.

About 40 or 50 people attended the unveiling of a plaque supplied by Nigel Jefferies by Mr Stephen Ballard, grandson of the Canal engineer.

Our picture shows Mr David Bick, Mr Stephen Ballard and Mr Peach.

We thank them for their hospitality and for their interest in our society.

EDITOR

## FORTHCOMING EVENTS

### RESTORATION WORK PARTIES 1986

Site Crews Pitch Wharf. 10.00 a.m. to 4.30 p.m.

SUNDAY 7th SEPTEMBER

SUNDAY 5th OCTOBER

SUNDAY 2nd NOVEMBER

SUNDAY 7th DECEMBER

Volunteers required. If you require transport please contact one of the committee. All made welcome.

---

### SUNDAY OCTOBER 12th. CANAL WALK.

If enough interest, I will organise a walk-drive to the Worcester-Firmingham Canal.

If you are interested &/or require transport please contact me as soon as possible at Camera Craft 53 St Owen St Hereford tel Hfd 279123 or at home on Hereford 56392

Mike Potts

As we had a very enjoyable coach tour and cruise in June I will organise one again next spring. Watch your Wharfinger.

---

### \*\*\* CANAL ARTIST \*\*\*

The Society wishes to thank Mr Arthur Rettalick for the two beautiful paintings of the Skew Bridge, Monkhide, which he has presented to us. A great deal of work must have gone into them, and it is very much appreciated.

The paintings will be on display at Camera Craft, 53 St Owen St., Hereford, for some weeks in the autumn, and can also be seen at future meetings.

### Three Men in a Boat (not forgetting the lady!)

On the last day of August four members of the Society, all keen and eager to learn the finer points (or in some cases, the basics) of narrowboat handling, set off to join Cliff and Joan Penny on their boat "Alexander" for a one-day course at Worcester. We nearly hadn't gone - only days earlier the tail-end of Hurricane Charlie had been battering the country, leaving the Severn fast-flowing and closed to all but the largest boats with the Alexander, returning from the National Garden Festival and Ellesmere Port, stranded at Stourport. However, the water levels dropped almost as rapidly as they had risen and, as if on cue for our excursion, the rain stopped, the clouds evaporated, and the sun shone all day.

The Alexander is an all-steel narrowboat 38½ feet in length and weighing some 15 tons, and by this time was back at her moorings at Diglis Basin in Worcester. First an introductory talk and tour of the boat, then a quick cup of coffee and we found ourselves under way, with two of our number operating locks and the other two receiving instruction in steering.

And so we made steady progress along the Birmingham and Worcester as the morning went on, taking turns so that everyone had a go at everything, vined the boat, and tackled the same locks going downhill. We chose a green and shady bank to stop for lunch - only to find as we drove our mooring-stake into the ground that we were being besieged by angry wasps. We had managed to run our bows into the one point on the bank where there was a large wasps' nest. We rapidly pushed off and headed down the out pursued by wasps who despite their fierceness did not sting anyone. We eventually had our lunch half a mile further on where one of our party succeeded in getting wet, smelly and muddy.

I still maintain it doesn't really count as I didn't fall in. It's just that the water had eroded the bank behind the concrete edge of the canal and I stepped on what I thought was grass only to find myself up to knee level in very smelly mud. Joan found a spare pair of shoes to lend me (despite Cliff's advice, I'd forgotten to bring a spare pair) while my things speedily dried in the sun and breeze. Our sandwiches tasted all the better for the open air and a glass or two of beer.

We passed through the two broad locks onto the Severn, where the level of mud on the banks was clear evidence of the state of the river only the day before. We found the boat remarkably manoeuvrable, and soon learned the art of mooring (always upstream) and winding, with the boat virtually pivoting about its centre of gravity. Techniques on the open river, with its wind and currents, were quite a contrast to the more confined canal, and it provided a nice balance to see both. Our antics coming and going and pivoting, and mooring in tight spaces only to immediately leave again must have provided a free afternoon's entertainment to the Sunday strollers on the bank.

A final cup of tea, and practice at removing the weed hatch - always left until last on the course because by Penny's Law, had we done it earlier in the day our propeller would shortly afterwards have become entangled in a handy Sainsbury's trolley.

To sum up - a most worthwhile day, especially valuable for complete novices such as myself but also an enjoyable day out for those amongst us who were more experienced. Our thanks to Cliff and Joan for organising it and being so helpful and patient. And finally, it is hoped to have another one fairly soon. The cost is £15, and if you'd like to go on it ring Mike Potts (Hereford 56392) as soon as possible.

Robin Andrews.

## CANAL HISTORY

3

The three pictures in this edition are copies of photographs kindly loaned by Mr Basil Butcher of Hereford. We presume that they are in fact pictures of the Hereford and Gloucester canal.

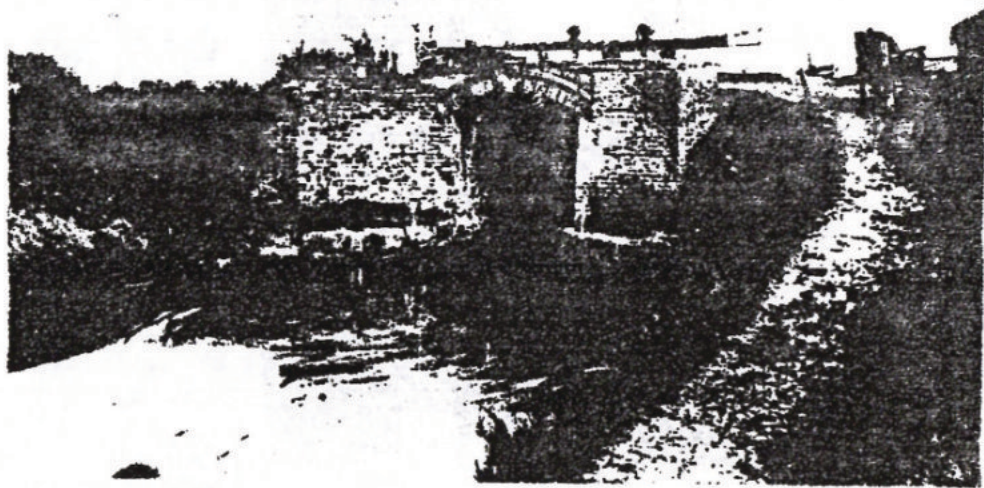
The one picture is Lock Cottage at Oxenhall but we do not know where the other two are. If you think you know where they were or if you know someone who might recognise them please let me know.

The Lock and bridge picture certainly looks the style used on the canal and looking at the landscape it may be somewhere between Newent and Gloucester, but this is only a guess.

The Wharf may perhaps be at or Near Ledbury. Copy's of these photographs are available for sale, see the back sales page.

These pictures will be on show at CAMPPA CRAFT 53 St OWEN STREET HEREFORD for a while along with two paintings of the Skew Bridge kindly given by Mr Arthur Rettalick. See elsewhere in this edition.

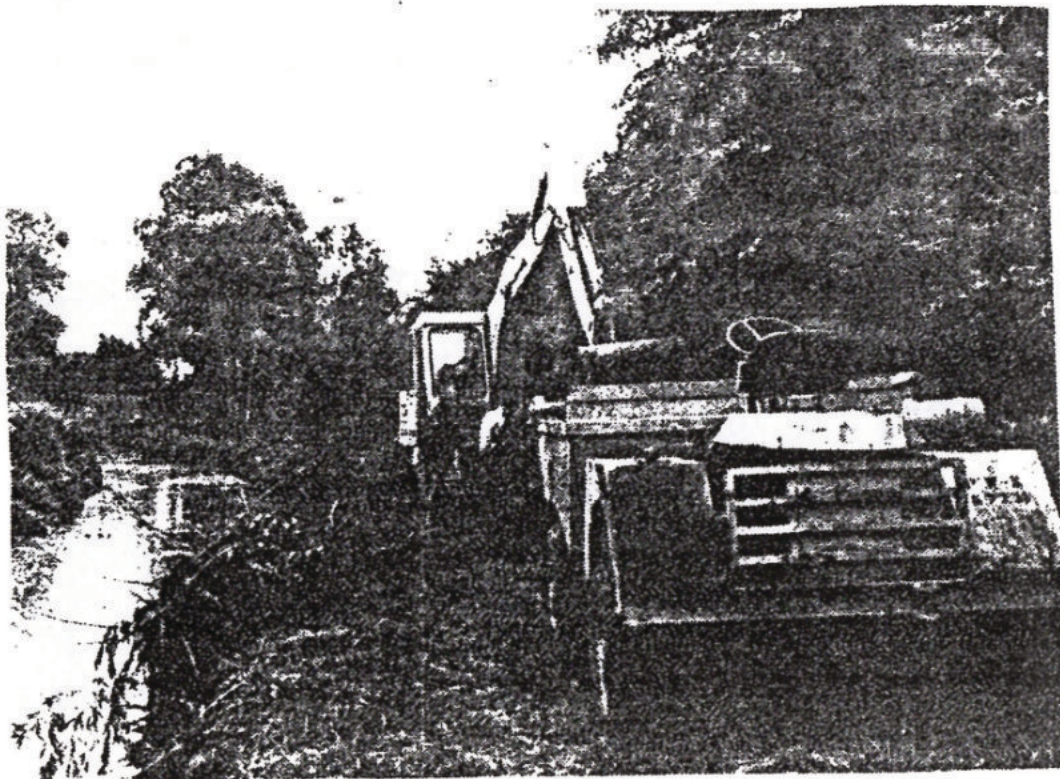
EDITOR



Roy, our digger driver, did an excellent job working in very difficult conditions, often unable to see where his bucket was digging. Our 3-ton dumpers were very useful with their sharp turning and were very manoeuvrable yet still able to carry a good quantity at a time. It was hard to keep pace with the rapid excavations of the digger as only three or four bucketfuls would fill a dumper.

We saw quite a lot of wildlife during our work and it is hoped that by a waterfilled reservoir will provide an ideal habitat for many more species. Herons, coots, ducks and even a kingfisher were seen, and at one point the digger picked up a grass snake which slithered off gracefully into the undergrowth.

Our next job will be to tidy up the towpath, and then to set about restoring the towpath beneath the Skew Bridge. We will also have to complete the dredging up to the main road. It is hoped to have most of this completed before our Open Day next June. We will need a lot of help to finish these jobs so please if you are able come along and give us a hand at our work parties.



WE ARE VERY GRATEFUL TO ALL WHO HELPED DURING OUR  
RESTORATION RALLY:

We wish to thank in particular Mr Colin Stone-Fewings for the most generous loan of his digger at no cost whatsoever to us. Also to thank Roy Parkes the driver for his skill and helpfulness which went far beyond the call of duty.

Our thanks also to:

Tony Ward, Arthur Betts, Nigel Jefferies, Peter Woodfield, Michael Potts, William Frecknall, Robin and David Andrews, Tony Austin-Bailey, James Dunn, Colin Betts, Mr Williams of Grove Farm, Mr Clay of Showle Court, Mr and Mrs Chapman of Wharf House, and especially to Major Robert Barnes for his interest, encouragement and support.

We would also thank Messrs. Sharpe & Fisher and J.R. Maddock Plant Hire for their assistance, and Tony Austin-Bailey and Peter Woodfield for making many of the advance arrangements required.

Our thanks also go to Mr Arthur Bigglestone and the Blair family of Monkhide for their help and co-operation. Also thanks to the many others who have given their valuable assistance and support.

We have learned a lot from our week and will put our knowledge to good use on the next one.

Restoration Tools. We have received a gift from David and Karen Andrews of Chester of a long-handled bill-hook, complete with the Society's initials on the handle. Thank you both very much - it will help in our war against the nettles!

THE HEREFORD WHARFINGER.

EDITOR. Mike Potts 3 Cranstone Breinton  
Hereford - 56392.

Produced by Mr Bernard Warburton at the  
Ross On Wye resource centre.

Produced quarterly. March, June, September;  
December. Date for copy 12th of previous  
month please.

# SALES

"THE HEREFORD AND GLOUCESTER CANAL"  
Hard back book by David B Bick £3.95  
The book of our canal.

---

"THE DIARY OF A ROWING TOUR FROM OXFORD  
TO LONDON IN 1875" By Howard Williams £4.50  
Including a detailed navigation of our  
canal.

---

Sold bird motif Key Ring & address pad 50p  
CANAL TEA TOWEL. A selection of tea towels  
with various canal scenes. each... £1.95

---

Post cards. LYDNEY DOCKS, GLOUCESTER DOCKS,  
THE WAVE IN GLOUCESTER DOCKS. 10p each

---

ILLUSTRATED NOTULETS. (Monkhide Skew Bridge)  
Ten complete with envelopes for £1.00

---

BUY YOUR CHRISTMAS CARDS NOW.....  
LARGE SOCIETY CHRISTMAS CARD with envelope  
picture Hereford Canal Basin. Each 35p

---

ILLUSTRATED MAP of the KINGTON-LEOMINSTER-  
CHURCHPORT canal by Geo R Kendrick. £1.95

---

CANAL PICTOGRAPHS. Oxenhall Lock Cottage,  
Canal Lock (location unknown), Canal Wharf  
and Lock (location unknown).  
Approx 6" x 8" mounted on card £3.50 each.  
Or in gilt glass frame £6.00 each.

---

All sales; Peter Woodfield or Mike Potts see  
inside front cover for no. & address.

Please note carriage extra. We will try and  
deliver where possible at no charge.