

# The Wharfinger

**Newsletter of the  
Herefordshire and  
Gloucestershire  
Canal Trust**



**Edition 66 • Summer 2000  
50p – free to members**

# WHO DOES WHAT . . .

Working together, in the present, to revive the past, and secure a better future ©

**VICE PRESIDENT**

*R. E. Barnes TD.*

**CHAIRMAN**

Brian Fox

**VICE CHAIRMAN**

*Vacant*

**FINANCE:-**

Treasurer/Chairman  
Committee

Liz Connors

Brian Fox, David Penny

Nigel Jefferies, *Tom Bennett,*

David Penny

Fundraising

**RESTORATION:-**

Wrinklies Co-ordinator

Plant - Over

Plant - Oxenhall

Health & Safety Officer

Brian Fox

David Penny, *Chris Tothill, Alan Lines*

*Tom Bennett*

Tony Austin-Bailey

**SPECIAL PROJECTS:-** *[Over Site]*

Project Director

Secretary/CDM Planning Supervisor  
Committee

David Penny

*Nigel Bailey*

Tony Austin-Bailey, *Mike Bowden, Paul Brown,*  
*Adrian Fry [WRG], Roy Jamieson, Brian Moul,*  
*Phillip Marshall, Colin Seaton.*

**LIAISON:-**

Local Authority  
Planning  
Landowner

David Penny

David Penny, Cliff Penny

Brian Fox

**PUBLICITY:-** Social/H&GCS Events  
Web Master

*Elizabeth Lloyd*

*Nigel Bailey*

**MEMBERSHIP:-**

Secretary  
Covenants

Nigel Jefferies

Liz Connors

**SOCIAL:-**

Events

*Barbara & Ray Moses*

**SUPPORT TO CofM:-**

Minutes  
Admin

Tony Austin-Bailey

*Dick Skeet*

**IWA NOMINATED MEMBER**

Will Frecknall

**THE WHARFINGER:-**

Editor

Cliff Penny

Postmasters:- Leader  
Team

*Ian & Frances Roper*

*D & M Gray; S McManus*

**TALKS/WALKS**

Nigel Jefferies

*Those in italics, above, are not Directors on the Council of Management, although they may be co-opted members*

**THE TRADING COMPANY**  
**H & G CANAL [SALES]**

*H & G*

**DONATING ALL PROFITS**  
**TO THE CANAL TRUST**

**CHAIRMAN** Brian Moul **SECRETARY/MANNING** Janet Moul

**TREASURER/CofM REP./Co. SECRETARY** Liz Connors

**MAIL ORDER SALES/SALES GOODS** Penny Shetliffe

**CRAFT FAIRS** Joyce Potts

**COMMITTEE** Tom Bennett, Ray & Barbara Moses,  
Derek Weaver, *Dick Skeet, Derek Gray*

**BOATS:-** Chairman *Dick Skeet*

Committee Ray & Barbara Moses, *Pat Skeet, Derek Gray*

*Those in italics are not Directors of the Trading Company although they may be co-opted members*

**HONORARY POSTS:-**

**SOLICITORS** Sue Newbould, Gabb & Co., 25 King Street, Hereford.

**ARCHAEOLOGIST** Ron Shoesmith

**TOWN & COUNTRY PLANNING** Penny Environmental & Planning

**FRONT COVER:** *Skew Bridge, Monkhide. Transformed by volunteers from a heavily overgrown muddy ditch.*

## PARTNERSHIP SUCCESS(2)

In the last edition of *The Wharfinger* the Editorial said this topic was '*to be continued*'. At the time I thought this would be in a few issues time - but that took no account of the very considerable further developments in the partnership that is helping to ensure Phase 1 of the Over site is completed on time!

Page 27 of the last edition told the 'stop press' story of the national commitment from the **Waterway Recovery Group** which has seen a number of 9 day Canal Camps and many shorter visits to Over during the past 3 months from WRGies, from all over the country. Rarely have more than a few days elapsed without a significant presence on site and this has ensured very significant progress even though we have had to endure more than our fair share of torrential rain. *Thank you.*

This year marks the 30th birthday of **WRG** (part of the **Inland Waterways Association**). To mark this landmark WRG has chosen to celebrate with specific work on three projects nationally in September under the theme '*WRG works*'. The three are Pant (on the Montgomery Canal, on the Welsh border), Lichfield (on the Wyrley & Essington Canal, near Birmingham) and our site at Over. The September work on the three Canals will culminate in one big national WRG birthday party at Over. *Happy Birthday, WRG [further details in the next edition].*

Right in the middle of the Canal at Over, where it turns and heads away from The Wharf, lies the site of the Victorian sewage works. Whilst our

volunteers have removed the majority of this the mass concrete foundations for the main treatment tank proved to be a significant obstacle. Enter **The Royal Monmouthshire Royal Engineers (TA)** who reconnoitred the site and then volunteered to undertake the task for us as a training exercise in April. Carlton TV came down to film the demise of the sewage treatment works but, unfortunately, the specialist breaking machine was on wheels and became well and truly stuck in the Over mud. However, following assistance from one of our excavators, and the WRG, a useful start was made the following day. It is hoped that another weekends work, at the end of May, will finally see this obstinate obstacle out of the way. *Thank you, TA.*

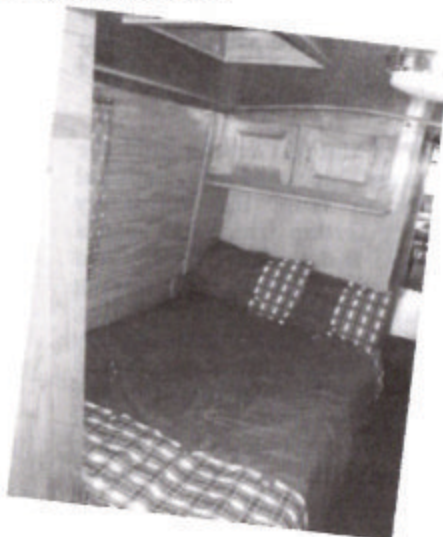
Speaking of partnership, it would be wrong to leave out **Swan Hill Homes** and their sub contractors. Whilst most of what we do is laid down by the formal Agreements between us and Swan Hill, our progress to date could have been severely prejudiced if it were not for the excellent day-to-day working relationship that have been established on site. It is not every day that a developer and his contractors have to co-exist with volunteers on a site and we are grateful for the understanding that has developed over the past few months (as a result of hard work on both sides). *To all who have helped in any way, thank you.*

There are many other organisations and individuals who are making a difference at Over; some don't want to be mentioned - others will be later. *Together* we are making fantastic progress regardless of the weather. *To all the unnamed - thank you.*

# SEVERN VALLEY BOAT CENTRE

25 years of quality narrowboat building experience

**We build complete narrowboats to the highest standards  
employing the best craftsmen and  
using top-quality materials**



**Why do our customers keep coming back?**

**We have full boat care facilities, excellent  
long-term moorings in  
a lovely location**

Visit the best stocked chandlery in the  
West Midlands to choose from  
a wide range of goods ideally suited  
for fit-outs and ask about  
our complete package deals

**Severn Valley Boat Centre, Mart Lane,  
Stourport-on-Severn, Worcs DY13 9ER  
Tel: 01299 871165 or Fax: 01299 827211**

**Website: [www.severnboat.co.uk](http://www.severnboat.co.uk)**

**E-mail: [sales@severnboat.co.uk](mailto:sales@severnboat.co.uk)**



## ROBBERIES

Yet again the Over site has been the subject of major robberies. On the first occasion a number of shipping containers belonging to **Swan Hill Homes** and their sub-contractors were broken into and tools and materials worth many thousands of pounds were stolen. One of the two Canal Trust shipping containers also had the security devices forced off and other padlocks were destroyed. Thankfully, we experienced no major loss of contents due, it is thought, to the thieves being disturbed. Even so, the repair to the doors and the replacement padlocks cost the Canal Trust some £200 and considerable volunteer time was expended in the administration involved.

One night during April thieves were noted on site and the Police mobilised the force helicopter, 6 squad cars and dog handlers. Due to their prompt response the incident was confined to a single sub-contractors shipping container. However, the main site access road was under construction at that time, and had a number of excavations within it, so a rapid vehicular approach was not possible. The Police awaited the helicopter before entering the site. By this time the thieves had made off on foot over the open fields to the rear of the site - with the contents of the container.

The site now has increased security and we hope that such incidents will be a thing of the past... however, to assist in this security please remember that casual visits to the site (day or night) are NOT possible. To see our progress we have arranged two opportunities for you...

## OPEN DAYS

Two chances to see the progress at Over. A barbecue on Sunday 25th June (guided tours at 5.30pm, BBQ at 6.30pm) - *advance booking is essential*, please and an Open Day on Sunday 16th July. No need to book for the Open Day but there will be a charge of £2 per person which includes your first cup of tea and a slice of homemade cake plus a guided tour. *[full details on p. 21]*.

**Please do NOT attempt to visit the site at other times - there is no public access.** The only way to visit site is as a volunteer who has pre-arranged attendance during one of our restoration days/weeks (or more!) or during one of these official Open Days. *Thank you for your understanding and co-operation.*

## MONEY

Not surprisingly, expenditure is at an all time high. Whilst we have substantial contributions committed from the Developer at Over these were only ever intended to pay for the plant hire and materials that had to be purchased for the basic Phase 1 works. We are determined to continue our work at this location - in addition to fitting out the shell of the new Lock Cottage. So every pound raised really does count. So please support our sales stand when you see it and our *Grand Holiday Draw* - and don't forget there is a prize for the person selling the most tickets this year *[details on p. 14]*.

## AGM

Please support your AGM on the 20th June at The Verzons. Full details are on the centre pages.



# The Bats of Over

*Our regular Over correspondent, Nigel Bailey, spreads his wings just a little to report on interesting happenings elsewhere on the site...*

Swan Hill Homes have completed the first "house" on the Over site but it's not fit for human habitation! It's the size and shape of a bungalow - but it's a bungalow without windows which is actually a bat house.

Lesser horseshoe bats were discovered in an abandoned boiler room in a cellar of the hospital about ten years ago. They must have been living there for a long time before that, though, because their droppings on the floor had built up to a four inch depth. Since then, the Gloucestershire Bat Group have kept an eye on the 50-strong colony and have been involved in deciding how best to protect it during and after the building phase. Whilst all bats are protected by law, the lesser horseshoes enjoy even more protection because they are classed as "endangered". In England, they live only in the South-West and Gloucestershire is their northern-most limit.

Some years ago the hospital had a problem with rats getting into the cellars and had to find a way to keep the rats out without cutting the bats off from their hibernation site. The solution was to build a "Chinese hat", a structure rather like a chimney with a coolie's hat perched on top. The bats happily adopted this new route.

While they were sleeping through the winter, a new cellar has been dug

adjacent to their boiler room. It's about 20 feet by 15 feet and some 8 feet deep. The concrete block walls have been left with a very rough finish because that's how bats like them! The old and new cellars are connected by a concrete pipe about 2 ft in diameter which is the way the bats, who are naturally curious, will discover their smart new home.



A lesser horseshoe bat hanging from a roof in its winter roost.

I asked Claude Elliott, of the Bat Group, how he proposes to persuade the colony to move next door when they wake from hibernation in April or May. *"They should move of their own accord,"* he told me, *"because we've made the conditions in there as good or better than the original cellar".* The design is by Bob Stebbings, an

environmental consultant who has worked on a number of successful bat re-location projects around the country.

The new cellar is designed as a cool area for winter quarters, while the roof space under its steep-pitched black tiles will be considerably warmer, ideal for the bat's maternity roost in summer. The ground floor is an open space where the bats like to fly around just prior to venturing out to feed. The bat house has just one small window for the bats to come and go, providing easy access to the hedge at the rear of the site where they hunt for insects - they're partial to midges, small wasps and spiders. Once they've moved house

## The Bats of Over

into what Claude calls their new "des-res", the connecting chamber will be blocked off.

Lesser horseshoe bats are pretty small - Claude likens them to "*a very small plum, weighing about the same as a 2p coin*". The female bat gives birth to a baby about one third her own weight. That's equivalent, he suggests, "*to a nine-stone woman producing a three-stone baby!*" For a while, the mothers carry the baby on their forays for food but when the babies become too heavy for comfortable flying, the mums "*hang the baby up*" until they return.

A few yards away, the Over site also has a breeding colony of brown long-eared bats living in an abandoned ward block. Swan Hill have had to delay the demolition of the ward block until there is no danger of harming the hibernating bats. Pipistrelles, which are Britain's smallest, and whiskered bats are also known to frequent the Over site. When complete and occupied, the Over bat house will be kept secluded behind a hedge and a securely locked door. The only human visitors will be Claude and his colleagues who will continue to keep a watchful eye on their re-located colony.

■ NB

---

## Oxenhall Tunnel Floats!

*All restoration projects need publicity and one of our Corporate Members sprung a welcome surprise on your editor by issuing a national press release recently...*

Yes, it's true - Oxenhall Tunnel has been seen floating in Northamptonshire! David Dawson, a Director of Blisworth Tunnel Boats [see *Corporate Spotlight*, on page 8] has named the latest edition to the fleet 'Oxenhall Tunnel'.

"All our hire boats are named after canal tunnels" said David, "the previous owners of the business used the more common names, but we plan to use names from canals which are restoration projects. The first boat under this new system has been christened 'Oxenhall Tunnel'. We distribute three thousand copies of our brochure each year and we include a brief resume about the canal tunnels that we use".

"We can build a story around 'Oxenhall Tunnel' and hopefully interest more people in the

campaign to restore this unique waterway" said David.

"We are creating an additional web site, with an on-line booking facility, and this will be accessed initially via our parent company web pages <[www.canalcraft.co.uk](http://www.canalcraft.co.uk)>. This will bring the name 'Oxenhall Tunnel', with an explanation of its location, and the work being done by the H&G Canal Trust, to the world-wide web from a different source to the Trust's own web site."

If the season is a success and Blisworth Tunnel Boats add another boat for 2001 then David suggests that 'Ashperton Tunnel' could be in the frame for next year.

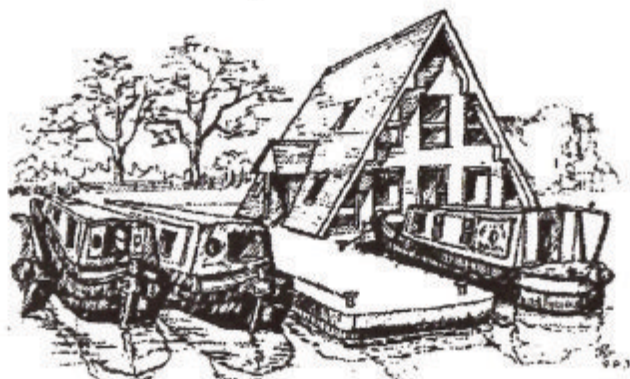
*We are exceedingly grateful for this unusual initiative - what next - a Bulmers 'H&G Canal' cider? - Ed.*

Blisworth Tunnel Boats Ltd., Mill Wharf, Gayton Road, Blisworth,  
Northamptonshire, NN7 3BN.  
Tel: 01604 858868

# Alvechurch Waterway Holidays

Enjoy a holiday on our award winning Tourist board inspected self-drive narrow boats. Over 100 boats available with from 2 to 12 berths from four locations

RYA Inland waterways Helmsman courses available.



**Brochure Line and information - 0121 445 2909**

**e-mail: [Enquiries@Alvechurch.Telme.com](mailto:Enquiries@Alvechurch.Telme.com)**

**Website: <http://www.alvechurch.com>**

## The Narrow Boat Specialist

High quality new narrow boats built

Brokerage service & boats for sale

**Full Marina Services at four locations**

### **ALVECHURCH BOAT CENTRES LTD**

Scarfield Wharf, Alvechurch, Worcestershire, B48 7SQ

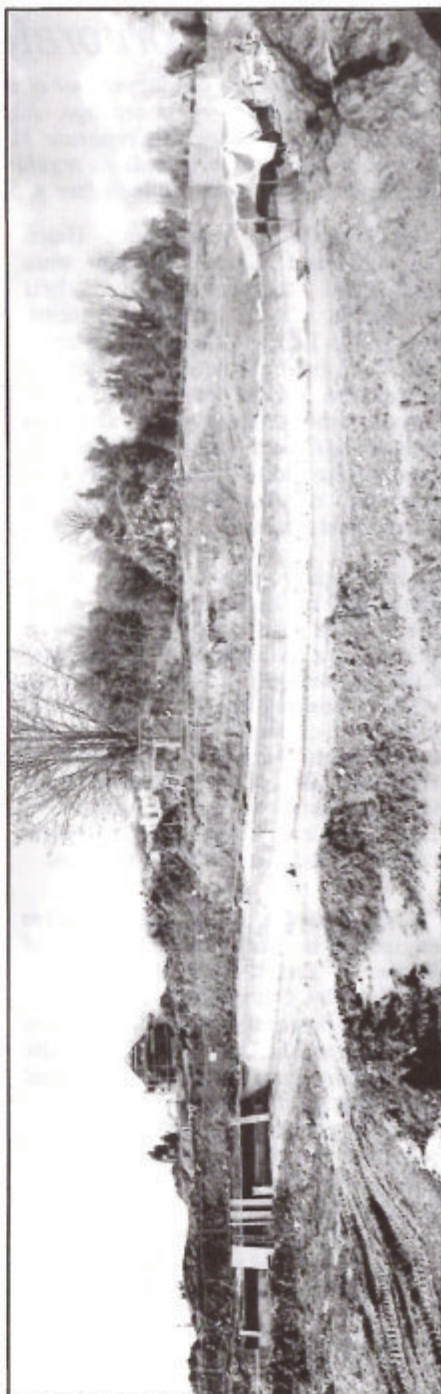
Telephone 0121 445 2909 Fax 0121 447 7120

**LEFT:** Initial backfilling completed on either side of the corner of The Wharf. Compare this to page 5 of the last edition. Our new site compound is visible alongside our site offices.



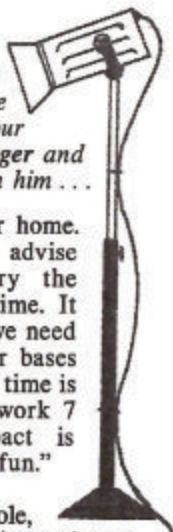
**BELOW:** A panorama of The Wharf taken from the steps of the site office showing the considerable progress by early April. The tarpaulin permits bricklaying to continue whatever the weather! The short limb had not been extended when this was taken. (see photo on page 25.)

(L. Cliff Penny. R. David Penny)



# Corporate Spotlight

David Dawson had already conducted a tour of the Canal Trust's display at the 'National' a couple of years ago. Impressed by what he saw he immediately joined as a Corporate Member. David's support for our voluntary efforts now extends to regular advertising in *The Wharfing* and naming boats after 'our' tunnels [see p. 5]. Now we turn the spotlight on him...



It is over forty years since Helen Saunders and David Dawson were introduced to canals, by their respective, boat owning parents. Married in 1967, Helen and David ran a hire fleet and built narrowboats on the Shropshire Union for several years. Leaving the waterways to raise two sons Richard and Robert. The Dawson family returned to the canals in 1997 to buy and develop Canal Craft, the narrowboat brokerage.

The Company now has four bases, controlled by Richard Dawson, eldest son, and his wife Alison. Richard, aged thirty and a boater from birth, is Canal Craft (Brokerage) Ltd's Sales Director, with responsibilities for valuing and marketing customer's boats. He works closely with Chris Hill, who runs the Droitwich site, and Clive Darken, Canal Craft's Nantwich manager. Fred and Linda Harris of Apollo Cruises oversee the Leeds and Liverpool Shipley base.

"Bob" Dawson, 29, an intuitive engineer, is Technical Director of Blisworth Tunnel Boats Ltd, recently acquired by Canal Craft (Brokerage) Ltd. This business is not only a holiday hire fleet on the Grand Union, but also a working yard. Bob's mechanical engineering and electrical skills allow him to make or repair almost anything required for canal boating. He's just hard to catch, as his skills are regularly required all over the world in his other interest, American Le Mans, F1 Grand Prix, and Touring Car motor racing, as a technician, not a competitor!

Helen and David live almost full time onboard 'Salmon' a 52' Les Allen. Said Helen "We practice what we preach,

our boat is practically our home. This helps us correctly advise people who want to try the waterways for the first time. It also gives us mobility, if we need to move to another of our bases for a while. House-keeping time is at a premium when you work 7 days a week, so compact is convenient as well as great fun."

David explained Helen's role, "She's a natural with any size and sort of boat. She can single-hand a seventy footer from Braunston to Bugbrooke in the day, yet spend ages with a first-timer on one of the day-hire boats ensuring they have a good day out. She organises the cleaning routines on turn-round day, looks after bookings, and cooks a superb evening meal."

As for David, with some forty years in and out of IWA, involvement with several Canal Societies, and having edited at least two amateur magazines, he is accepted as the catalyst that made, and makes it all happen at Canal Craft. David is involved at the sharp end, on sales and behind the scenes with Tony Lawrence the group's Finance Director, and John Burke, the IT Director. David is pushing ahead with <canalcraft.co.uk> an expanding interactive web site/online magazine.

So if you want to buy, sell, repair or hire a canal boat, talk to Canal Craft first. You will be received with an enthusiasm and honesty which many people find refreshing these days. And if you want to talk about the canals as they are, were, or could be, ask for David. *If he can't help he will know someone who can.*

JB

# CANAL CRAFT

## ***IF YOU WANT TO BUY A BOAT, OR SELL YOUR BOAT,***

**THEN CANAL CRAFT (BROKERAGE) LTD**  
the trusted leader in narrowboat sales  
EXISTS TO HELP YOU

THE COMPANY IS STAFFED BY ENTHUSIASTS  
WHO'S CANAL EXPERIENCE TOTALS OVER A HUNDRED YEARS.

### ***IF YOU WISH TO BUY***

WE ISSUE COMPREHENSIVE STOCK LISTS (USUALLY OVER SEVENTY BOATS)  
**NEWLY PRINTED EACH DAY**

(or see our display ads in the leading waterway magazines)

BOAT PRICES RANGE FROM £7,000 TO £70,000

WE HANDLE RESIDENTIAL BOATS IN ALL AREAS

WE CAN SUPPLY FULLY FITTED OR PART FITTED NEW BOATS

OR ASSIST YOU IN A DESIGN AND BUILD PROJECT

WE ARE LICENCED CREDIT BROKERS AND ARRANGE INSURANCE FOR YOUR BOAT

WE ASSIST WITH MOORING LOCATION IF REQUIRED

FIRST TIME BUYERS GUIDE AVAILABLE FREE ON REQUEST

### ***IF YOU WISH TO SELL***

WE WILL MEET YOU AT YOUR BOAT

ANYWHERE ON THE CONNECTED SYSTEM.

WE PROVIDE A FREE ON THE SPOT VALUATION

BUT THERE IS NO OBLIGATION TO USE OUR SERVICE.

WHY NOT CALL US AND FIND OUT WHY WE ARE-

## ***THE TRUSTED LEADER IN NARROWBOAT SALES.***

**phone 01604 832883/832889**

**fax 01604 832885**

**or E-MAIL us!**

**ask for RICHARD, ALISON, HELEN, OR DAVID**

Canal Craft (Brokerage) Ltd., Cornhill Lane, Bugbrooke, Northants NN7 3QB

Phone (01604) 832889 Fax (01604) 832885

Visit our new Internet site:- [www.canalcraft.co.uk](http://www.canalcraft.co.uk)

## Recycled

A large number of Council Officers within the Local Authorities along the line of the Canal receive a regular copy of **The Wharfinger** to keep them abreast of our progress. In addition, we arrange for bulk supplies to each Council sufficient for one copy to be given to each Councillor. [The only exception to this being Gloucestershire County where the majority of the Members represent areas that are a considerable distance from the Canal. *We send a copy direct to those Gloucestershire County Councillors who represent areas close to the Canal.*]

We mention this because a well intentioned Local Authority Officer passed his copy of **The Wharfinger** onto a Councillor who he thought might be interested - unfortunately so did two colleagues to the same Councillor. The Councillor therefore received 4 copies in total and thought how wasteful we were!

We greatly appreciate the initiative of recycling copies of **The Wharfinger** and hope that this explanation of the distribution method within the majority of the Local Authorities will enable recycling to continue with a lesser risk of duplication!

If you work for a Local Authority please let us know if you are aware of someone who ought to receive a regular copy.

Our thanks to the Member Services Departments of the Forest of Dean District Council, Herefordshire Council and Tewkesbury Borough Council for their ongoing help in distribution of **The Wharfinger** to Councillors.



CORPORATE  
IWA  
MEMBER



### MICHAEL STIMPSON and ASSOCIATES

*Corporate Members of the  
Herefordshire & Gloucestershire  
Canal Trust, and IWA*

## INSURANCE

What will the name on your  
renewal notice be this year?  
Why not find out what the only  
company to specialise in

INSURANCE FOR THE INLAND WATERWAYS  
for the last 21 years can offer you!

Our range of policies include:-

- \* PERSONAL EFFECTS COVER AT  
NORMAL PREMIUM RATE
- \* NO EXCESS ON THIRD PARTY CLAIMS
- \* SEMI-PROTECTED NO  
CLAIMS DISCOUNT
- \* UP TO 40% NO CLAIMS DISCOUNT
- \* COVER WITH A MAJOR BRITISH  
INSURANCE COMPANY
- \* RESIDENTIAL AND COMMERCIAL USE
- \* WIDE LEGAL PROTECTION COVER
- \* FITTING OUT RISKS
- \* NO SURVEY ON OLDER CRAFT  
IF C OF C IN FORCE

#### IWA MEMBERS DISCOUNT POLICY

If you want to choose the cover  
you want for your boat then

*Perhaps we should be talking!*

why not ring us now

**6 Norfolk Road,  
Rickmansworth, Herts.  
WD3 1QE**

Tel: (01923) 770425 & 770255

FAX: 721559

# Committee Matters

*Two Council of Management meetings are reviewed by our Editor in order that our Members and supporters are kept up to date [there was no meeting in January]...*

## FEBRUARY COMMITTEE

▪ A change of date and venue for the AGM would be considered. Members had suggested that we use The Verzhons on our regular 'third Tuesday' thus avoiding two Canal Trust meetings in close succession. This would mean it slipping into June to allow sufficient time for our auditors and to tie in with publication dates for *The Wharfinger*.

▪ It was agreed that the information published in the Winter edition of *The Wharfinger* correctly reflected the position regarding the resignation of Directors as it stood at press date.

▪ The Chairman was to liaise with the Inland Waterways Association's HQ regarding their formal Nominee on the C of M as the Canal Trust had no objection to Will Frecknall continuing in this post.

▪ Refinements to the distribution of Directors' Notes (Committee papers for the C of M) were agreed. Dick Skeets behind the scenes role in administering distribution was appreciated.

▪ Whilst Barbara and Ray Moses had indicated their intention to stand down from their role as Social Evening Organisers they had confirmed their willingness to continue to serve on the Board of the Trading Company. It was suggested that more C of M members might try to attend the regular Social Evenings. Some evenings were not as

well attended as might be, given the wide range of speakers, and our publicity did not seem to be as effective as it used to be.

▪ It was noted, with regret, that Joyce and Mike Potts did not intend to continue to organise visits and weekend breaks due to the very poor support they had received in respect of more recent trips.

▪ The Treasurer confirmed that the first payment of £5,000 had been received from Swan Hill Homes in respect of the Over site. Further amounts would be required by March. Budgets for the first quarter were approved.

▪ Prospects in the near future did not look good as far as grant aid was concerned. However, it was noted with pleasure that the IWA Middlesex and London Branches had joined forces to pay £250 each so that our dumper 'Dream Machine' could have a new clutch fitted and be brought back into regular use. *[Why 'Dream Machine'? Apparently, if you have driven our other dumpers you will soon agree with the name! Ed.]*

▪ Steady progress was being made with the restoration of House Lock, Oxenhall although only 4 people regularly attended on a Tuesday. As there was other work to be done in the area efforts would be made to increase the numbers.

▪ Good progress was reported at Over. Gabion installation had been commenced and all

## *Committee Matters . . . (ii)*

brickwork on the slipway walls completed as had brickwork to all available sections of The Wharf. Backfilling behind The Wharf was about to commence. The original location of the stop plank grooves to the lock had been located. David Penny hoped that he had found a source of large granite coping stones. There had been an initial meeting with Swan Hill site staff and it was intended that very frequent liaison would take place as they increased their presence on site. Greatly increased WRG assistance at Over was under discussion.

■ It was hoped that one of our two excavators at Over would be back in service shortly. The Army had agreed that they would take our 18tonne Volvo dump truck and

rebuild it for us as a training exercise. This initiative was greatly appreciated. A much cheaper source of quality hydraulic fluid had been located.

■ The C of M granted delegated powers to enable a legal Deed of Variation, and a Collaboration Agreement, with Swan Hill Homes to be signed outside the C of M. This would enable mutually agreed matters to be formally regulated to the benefit of both parties.

■ The Trading Company had agreed to dispose of the van as it was not economical. A list of proposed display/recruitment opportunities was reviewed [see p. 15 of the previous edition]. There would also



### ***SERVITUNE Motors***

**Bill Limb**

**The Trading Estate, Lower Road, Ledbury**

All Car and Light Commercial Vehicles  
General Repair and Servicing  
Sun Diagnostic Tuning  
Computerised 4 Wheel Alignment  
Fuel Injection Repair and Tuning  
Electronic Ignition Overhaul  
Tuning for Economy  
4 Gas Exhaust Analysis  
M.O.T Preparation  
Vehicle Recovery and Transportation

*Efficient,  
friendly,  
expertise.*

*Telephone*

Day 01531 632875  
Night 01531 890457

## Committee Matters . . . (iii)

be a display, in Gloucester, in March. Christmas cards and coasters were on order featuring a painting by Garth Allan of Oxenhall Lock.

- Advantage West Midlands had agreed to contribute £8,500 towards the study of the whole of the Canal. This was welcomed.

- Work had commenced on refurbishing the new boat at Horsefair Wharf, Oxenhall.

- All three prizes had been secured, together with sponsorship for the printing of the Grand Holiday Draw.

- It was reported that the Health and Safety Plan and related documentation was at an advanced stage. Whilst primarily drafted for

Over it would apply to all sites.

### MARCH COMMITTEE

- Preliminary arrangements for the AGM were agreed. It would be at The Verzons on Tuesday 20th June. The IWA had re-affirmed Will Frecknall as their Nominee.

- Liaison was taking place regarding the continued use of the Dig Deep initiative on the H&G Canal. This was much appreciated.

- Following much midnight oil burning, the Deed of Variation and Collaboration Agreement with Swan Hill Homes had been signed. Tewkesbury Borough Council had also signed the Deed of Variation and this permitted the development to proceed. Penny Environmental &

## E. B. HAYWARD & Co.

We are a family run business established 37 years ago, specialising in sheetmetal work and fabrications in most metals including mild steel, stainless steel, aluminium, titanium, copper and brass.

Items can be manufactured to your own drawings and/or from instructions, in quantities from 1 to 10,000 off and can range from the size of a washer right up to fabrications of 1 tonne.

We have a wide client base with particular involvement in the hydraulic press, concrete, materials handling, feed and flour milling industries.

It has been our pleasure in supporting the Herefordshire and Gloucestershire Canal Trust for over 6 years, and we will continue to *work together in the present, to revive the past, and secure a better future.* <sup>© 1997</sup>

For further details please  
contact Simon Hayward -  
Tel: 01452 700384  
fax: 01452 700740



SHEETMETAL WORKS  
ASHLEWORTH  
GLOUCESTER  
GL19 4JJ

## Committee Matters . . . (iv)

Planning were again thanked for their extensive voluntary services in negotiating these complex documents. It was stressed that whilst this was a major step forward there was a need for ongoing liaison and negotiations over a number of issues.

■ Following the resignation of Mike Potts arrangements for slide presentations to external bodies was discussed. Cliff Penny agreed to continue to give 2 or 3 per year, Nigel Jefferies would also present some and Brian Fox agreed to cover a number of daytime requests.

■ The Treasurer gave her regular financial report of income and expenditure.

■ The new tail bridge for House Lock, Oxenhall, had been completed by the KESCRG branch of WRG. Our Planning Team had given Forest of Dean District Council assurances that it would not become a fixture on the Listed Lock until Listed Building Consent had been obtained. This would now be sought.

■ Two of the dumpers at Horsefair Wharf were in the process of being re-built. It was agreed that another unserviceable dumper and associated parts would be sold to Tom Bennett for £300.

■ Membership continued to grow, largely as a result of the new full colour information and recruitment leaflet sponsored by Left Bank Village, Hereford. The 98th Life Member had just been recruited. Thought would be given as to how to mark the recruitment of the 100th Life Member.

■ Our Planning Liaison Team had made a technical objection to proposals by Mr Nigel Freeman for an equestrian centre close to the Canal at Oxenhall. The concern was that this might become a public facility and the proposed car parking areas were not clearly defined and could encroach on the line of the Coal Branch. The Application had subsequently been withdrawn. Liaison was ongoing regarding details relating to the re-development of the former Farriery College site in Hereford. Significant positive changes had been secured to the Biodiversity Plan for Gloucestershire in the section relating to the H&G Canal.

■ The Trading Company reported that the Herefordshire Preservation Society were keen to forge greater links with the Canal Trust. We would be taking up their offer of sharing their day in Hereford High Town early in April and possibly sharing space at Herefordshire Country Fair. This was greatly appreciated.

■ C of M agreed to make a visit to the Over site now that the evenings were getting lighter; a date would be agreed at the April Committee meeting.

■ CRP



Your chance to WIN a years subscription to **Waterways World!** Just sell as many Grand Holiday Draw tickets as you can and save all the stubs and money until August. The person sending the most IN ONE ENVELOPE by 19th August wins the subscription. *Our thanks to Waterways World for donating the subscription. [Rules: see p. 4 of edition 65.]*

# aquacraft

## *A fresh approach to Marine Insurance*

**Drewe**  
**INSURANCE**

**Tel: 01299 401663**

**Fax: 01299 403141**

The Post House, 14 Load Street, Bewdley, Worcs. DY12 2AE

### *Letters to the Editor*

[Whilst we welcome letters on any topic relating to our work and the Inland Waterways System any opinions expressed do not represent the policy of the Canal Trust unless specifically stated.]

*Dear Editor,*

The internet site is excellent. As an ex Director of the H&G Canal Trust (*my work has taken me out of the area*) I still keep a keen interest in the Canal and the work of the Canal Trust.

Our narrowboat is kept at Napton and is called 'Ballard'. I am very proud to see what you have all achieved at Over and elsewhere on the Canal.

The internet site is almost as good a way for us long-distance Members to keep up to date as *The Wharfinger*.

I look forward to seeing you at Maisemore Lock on my way onto the H&G Canal at Over in the near future!

*Dr Roger Morgan, Teddington, Middlesex*

*Dear Editor,*

I have just had a glance through the contents of the website and I have to congratulate all concerned. I have always considered that *The Wharfinger* is far better than the average and I am now pleased to see that the website compares!

All you hard working 'local' people deserve the CDM for all your efforts. From a distant Member, thanks very much for trying to preserve a beautiful stretch of canal. Please keep up the good work!

*Stewart Sloan, Huddersham, Bucks*

*Thank you for the kind comments about the web site and The Wharfinger. It is good to have the occasional letter singing our praises! - Ed.*

# Dates For Your Diary

*By Barbara & Ray Moses*

Meetings hosted by our "Master of Ceremonies" Lloyd Jones

Social evenings are held on the 3rd Tuesday of every month  
*everyone welcome, held at The Verzons Country  
House Hotel, Trumpet, nr. Ledbury - see map below.*

*All meetings are 7.30 for 8pm.*

*EXCEPT the AGM - 7.30pm start.*

## Tuesday, 20th June

### *Annual General Meeting*

Our AGM at a new venue - please  
come and support us. We do our best  
to get through the formalities quickly!

## Tuesday, 18th July

### *"The Kennet & Avon Canal"*

\*speaker & topic subject to confirmation.

Do come along - we guarantee that it  
will be an interesting evening.

## Tuesday, 15th August

### *"Noggin, Natter & News"*

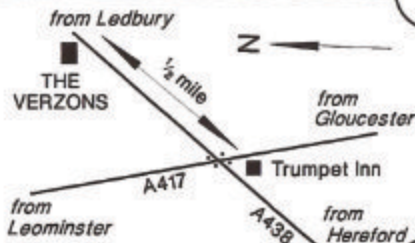
No formal speaker, but please come along for a chat  
and an update on progress close to our deadline  
for the completion of Phase 1 at Over.

**WANTED!** We urgently require a new organiser for our monthly Social  
Evenings - Barbara and Ray are having to stand down at the  
AGM due to pressure of their other commitments.

*Ray & Barbara have gone to a lot of trouble to organise a superb range of  
Social Evenings - please support them - everyone welcome!*  
*Any queries, or ideas for speakers, to Ray & Barbara on 01989 780 325*

Our Social Evenings venue is the  
Verzons Country House Hotel...  
situated on the A438 Hereford to  
Ledbury road, half a mile on the  
Ledbury side of Trumpet crossroads  
(junction of the A438 with the A417).

A warm welcome, plenty of parking  
and approximately halfway along the  
Canal from Hereford to Gloucester.



# HEREFORDSHIRE AND GLOUCESTERSHIRE CANAL TRUST

WORKING TOGETHER IN THE PRESENT, TO REVIVE THE PAST, AND SECURE A BETTER FUTURE

## **ANNUAL GENERAL MEETING 2000**

to be held on Tuesday, 20th June, 2000  
at The Verzons Country House Hotel, Trumpet,  
near Ledbury, commencing at 7.30pm.

## **Annual Report and Accounts\* for Year Ended 28th February 2000**

*Apart from the formal business there will be  
a lively mix of slides, overhead projections  
and commentary on the successes of the year.*

*Light refreshments will be available.*

*Members and friends will be made very welcome.*

*\* Summary (abridged) Accounts will be included as a loose insert (for Members only). Members may obtain a full set of Accounts by sending a large SAE to the Treasurer; full sets of Accounts will also be freely available at the AGM.*

*Every Member who is entitled to vote at an AGM may appoint a proxy to vote in his/her stead. A proxy must be someone entitled to vote at the meeting. Proxy forms are available from Liz Connors. The forms must be completed, signed and returned to her so that they are received at least 48 hours prior to the commencement of the AGM.*

*We aim to allow ample time for general questions after the close of formal business. Prior notice of questions should ensure a comprehensive response and would be greatly appreciated.*

## AGENDA

1. Welcome and formal opening of the meeting.
2. Chairman's Report.
3. Group Reports.
4. To receive and approve the Report of Council, the Income and Expenditure Account and Balance Sheet of the Trust (and associated Company) for the year ended 28th February 2000, the Report of the Honorary Auditor thereon, and the Report of the Honorary Treasurer.
5. To appoint Auditors for the Trust (and associated Company).
6. To re-appoint those Council Members retiring by rotation who offer themselves for re-election:-

**Tony Austin-Bailey; Liz Connors; David Penny**

7. To note the C of M's action in amending Article 51 as follows:-  
*Delete: "One-fifth of the members of the Council shall be a quorum."*  
*Substitute: "The quorum shall be five members of the Council."*
8. Close of formal business.

*Subject to time being available an illustrated review of progress will follow the formal business.*

**NOTE REGARDING AGENDA ITEM 6.** One third of the Members of the Managing Council are required to stand down each year. All those standing down (listed at 6. above) are offering themselves for re-election unless stated otherwise. New volunteers to serve on the Council of Management are welcome; as reported on p.18 of the last edition of *The Wharfinger* formal Nominations (*on forms obtainable from the Treasurer*) have to be received between 23rd May and 13th June. The maximum size of the Council of Management is 18 and, unless new nominations bring the total in excess of this number, the above stated Members will be returned un-opposed. The Council of Management is also empowered to co-opt Members during the year (subject to the maximum size not being exceeded).

## ANNUAL REPORT FOR YEAR ENDED 28th FEBRUARY, 2000

This is the eight Annual Report of The Herefordshire and Gloucestershire Canal Trust Limited [a non profit distributing Company [formed in April 1992, No. 2704407], which is a Registered Charity [1010721] and of the wholly owned Trading Company - Herefordshire and Gloucestershire Canal (Sales) Ltd [2710215]]. They replaced the Herefordshire and Gloucestershire Canal Society which was launched in 1983.

The *Canal Trust* is indebted to its *Council of Management*, and to the *Trading Company Board*; during the period under review [*year ended 28th February 2000*] those listed on page XX have been Members:-

## CANAL TRUST COUNCIL OF MANAGEMENT (12 months to 28-2-00)

Tony Austin-Bailey; Tom Bennett *[r1]*; Liz Connors; Simon Dyer *[c]*;  
Brian Fox; Will Frecknall *[IWA nominee]*; Nigel Jefferies;  
Alan Lines *[r2]*; Cliff Penny; David Penny; Mike Potts *[r3]*.

*[c] = Co-opted during the year. [r] = resigned (1) Sept. '99; (2) Feb. '00; (3) Oct. '99*

## TRADING COMPANY (H&GC (Sales) Ltd.) (12 months to 28-2-00)

Tom Bennett; Liz Connors; Derek Gray;  
Ray & Barbara Moses; Mike *[r]* & Joyce Potts; Penny Shetliffe;  
Dick Skeet; Derek Weaver.

*[r] Resigned Oct. '99.*

*Italics in the first list indicates not a Director; in the second not a Member of the Trading Company Board.*

Each recent Annual Report has reported on what seems to be a busier than ever 12 months - the period under review being no exception!

During the year we were actively involved with the Inland Waterways Association's Regional AGM; hosted a meeting of the Southern Canals Association and a meeting of the IWA's National Restoration Committee. It will come as no surprise that all were to visit the Over site which, understandably, was to dominate the 12 months in question.

The National Waterways Festival visited Worcester for the first time and the H&G Canal Trust, and our Trading Company, ensured that this important opportunity to showcase our voluntary efforts was not missed. We won the British Marine Industry Federation's award for the best non-commercial display of the whole Festival and were visited by a large number of VIP's - and attracted a lot of attention from the visiting public.

Thanks to sponsorship from Left Bank Village, Hereford, we were able to launch our first ever full colour information and recruitment leaflet to much acclaim. It is already having a significant effect on recruitment. Another first was the launch of the h-g-canal.org.uk web site; another initiative that has brought many compliments and raised the profile of all of our voluntary work.

During the period under review our quarterly magazine *The Wharfinger* has continued to keep Members and supporters abreast of our progress

far more than the limited space for this Report will allow. The magazine broke all records for the number of editorial pages and revenue income from advertising during the year.

Restoration has continued steadily at Oxenhall House Lock and visitors can see this Listed structure beginning to emerge from the dereliction of time - adding to the significant enhancements to the Canal in this area as a result of the Canal Trusts (and visiting volunteers) efforts over the past few years.

It is the Over site that has rightly dominated the past 12 months. Fantastic progress has been made both by our own and WRG volunteers from all over the country; making this currently the largest single site of voluntary canal restoration on the whole inland waterways network. WRG also used the Over site for their annual Training Weekend and for their Annual Re-union Weekend. The Canal Trust are indebted to WRG for their very substantial national commitment to the Over site which increased even further as we passed into the current year.

However, not a single barrow of mud (*although things are usually done on a grander scale these days!*) could have moved without the very considerable 'behind the scenes' activity that is so easily taken for granted. No Annual Report would be complete without a sincere "thank you" to everyone who has assisted, in any way, to make these 12 months so successful for the H&G Canal Trust and the H&G Canal.

 CRP

# THERE'S STILL PLENTY OF TIME TO SUPPORT OUR MAJOR FUND-RAISING INITIATIVE

The major restoration activities on the H&G Canal cost money! Please enter our Grand Holiday Draw.  
YOU could win a superb holiday whilst supporting us!

Herefordshire & Gloucestershire  
Canal Trust - H & G C S

00000

## GRAND HOLIDAY DRAW

★ 1st Prize - NARROW BOAT HOLIDAY FOR 4 ★  
ONE WEEK (prior to 31/5/00). Donated by BLACK PRINCE HOLIDAYS

2nd - TWO VIP TICKETS TO THE LONDON  
INTERNATIONAL BOAT SHOW 2001 + TOP HOTEL  
Donated by BRITISH MARINE INDUSTRIES FEDERATION

3rd - TWO NIGHTS B&B FOR 2 IN ROSS ON WYE  
enjoy a mini break close to the River Wye and this beautiful town  
October 2000 - May 2001. Donated by MRS GAIL PHILLIPS

(The first & third prizes include Bank Holidays and are subject to availability.)  
Donated by Mrs E. Connors, 18, 60, Elmhurst Close, Sutton St, Hereford, Herefordshire, HR1 2BP  
Registered with Hereford City Council under Section 5 Lotteries & Amusements Act 1976  
To be drawn at National Waterways Festival, Waltham Abbey, 28/8/00

mb npower - TICKETS 25p EACH -

Additional  
tickets are  
available from:-  
our Treasurer  
Liz Connors;  
at the AGM;  
or at the  
monthly Social  
Evenings.

## MEMBERSHIP FORM

REV 04/00

NAME ..... PLEASE

ADDRESS ..... PRINT

Thank  
you

POST CODE ..... TEL ..... NEW MEMBER ☐ RENEWAL ☐ GIFT ☐

Details, please, of any skills  
that might assist us in our work?

GIFT AID: As a Registered Charity we can increase income from subscriptions, and any donations, by  
almost one third provided you pay tax - if you DON'T pay tax or DON'T want us to do this tick this box. ☐

**Subscription rates :-** INDIVIDUAL £ 7.50 ☐ JOINT/FAMILY £ 10 ☐

SENIOR CITIZEN £ 5 ☐ JOINT SEN'R CIT'N £ 7 ☐ CORPORATE £ 20 ☐

**LIFE MEMBERSHIP :-** INDIVIDUAL £ 150 ☐ JOINT/FAMILY £ 200 ☐

SENIOR CITIZEN £ 80 ☐ JOINT SEN'R CIT'N £ 110 ☐ CORPORATE £ 400 ☐

PLEASE help us to keep our Subscriptions low AND to  
accelerate our restoration progress by making a DONATION £ ..... TOTAL  
payment £ .....

**BANKERS ORDER** | ♦ Please insert the amount of your Subscription + any voluntary donation. Thank you.

(Do not detach). To (name & address of your bank) .....

Please pay to account No. 11600694, sorting code No. 16-21-20 of The Herefordshire and  
Gloucestershire Canal Trust at the Royal Bank of Scotland, 21 Broad Street, Hereford, HR4 9AP

The sum of £ ..... on this day and thereafter, *annually* (on the anniversary) until further notice.

SIGNED ..... MY A/C No. .... DATE .....

[YOUR NAME AND ADDRESS  
TO BE AS GIVEN ABOVE.] [This CANCELS any previous Bankers Order in favour of the Trust.]

CREDIT CARD MANDATE: If you would prefer to pay annually by credit card please tick this box. ☐

The Membership Secretary, H & G C T, 6 Castle Street, Hereford, HR1 2NL

## *Two chances to visit Over*

As we have stressed many times, the Over site is NOT open to the public. Due to Health and Safety and other considerations applicable to both the Canal Restoration Site, and the Swan Hill Homes site, casual visits are not possible.

However, we can understand that many Members and supporters are anxious to see how we are progressing. So here's two opportunities:-

### ***Over BBQ***

***Sunday 25th June***

5.30pm see our progress - guided tours

6.30pm BBQ

***£5 per person entry - free BBQ.***

Advance Bookings ONLY. Please  
'phone Liz Bailey (01452) 533 835

LIMITED CAR PARKING on site - please share transport and  
follow signs to designated parking areas.

*We're not finished yet! Stout shoes strongly advised!*

### ***Over Open Day***

***Sunday 16th July***

10am to 4pm

***£2 per person to include cup of tea &  
homemade cake + guided tour.***

*No advance booking necessary*


Further Home Made Refreshments for sale

LIMITED CAR PARKING on site - please share transport and  
follow signs to designated parking areas.

*We're not finished yet! Stout shoes strongly advised!*

### ***Over Planted?***

Is your garden over planted? If so the Canal Trust could use any spare plants (from bedding, through hedging, to trees) to enhance the areas we have been working in and to make our site offices more attractive by the time the show house is open.

If you have plants to spare, or would like to grow some for us, please contact Maggie Jones on (01452) 618010. Maggie would also like to hear from you if you have green fingers and would like to assist with planting on site. *Thank you.* 

# GEOprojects

Award winning maps & atlases

## INLAND WATERWAYS OF BRITAIN SERIES



### Britain's Waterways

*A unique insight*

Brian Roberts

A comprehensive directory of the inland waterways with special maps of over 50 individual waterways and regional coverage of the whole system.

Visit our web site at  
[www.britains-waterways.com](http://www.britains-waterways.com)  
for a detailed look at the content.

£12.95



### Inland Waterways of Britain

*a national route planning map . . . .*

£5.75

### waterways maps . . . .

- Basingsstoke Canal £4.00
- Birmingham Canal Navigations £4.75
- The Broads £4.75
- Caledonian Canal and the Great Glen £4.75
- Coventry and Ashby Canals £4.75
- including the Birmingham and Fazeley Canal
- Grand Union Canal
- Map 1 Birmingham to Fenny Stratford £4.75
- Map 2 Braunston to Kings Langley £4.75
- Map 3 Fenny Stratford to the Thames £4.75
- Map 4 Leicester Line, Soar Navigation and Erewash Canal £4.75
- Kennet and Avon Canal £4.75
- Llangollen and Montgomery Canals £4.75
- Oxford Canal £4.75
- Shropshire Union Canal £4.75
- Staffordshire and Worcestershire Canal £4.75
- Thames, the river and the path £4.75
- Thames and London Rings Atlas £11.75
- Trent and Mersey Canal
- Map 1 Preston Brook to Fradley Junction £4.75
- Map 2 Great Haywood Junction to Cromwell Lock £4.75

### in preparation . . . .

- Lee and Stort Navigations
- Leeds and Liverpool Canal

Available from shops and waterside outlets or direct from:

GEOprojects (UK) Ltd  
9-10 Southern Court • South Street  
Reading • RG1 4QS  
Telephone: 0118 939 3567  
Fax: 0118 959 8283

E-mail: [sales@geoprojects.demon.co.uk](mailto:sales@geoprojects.demon.co.uk)

Call for details of credit card payment.



## Thank you, Jim

One of our Honorary Solicitors, Jim Chapman of Madge Lloyd & Gibson, of Newent, has just retired. We are indebted to Jim for his considerable support and voluntary work on behalf of the Canal Trust over the past few years - especially relating to many background matters that have enabled us to steer a straighter course than might otherwise have been the case! *Thank you.*

His office has also acted as a small but important part of our 'behind the scenes' distribution system for bulk copies of *The Wharfinger* to be circulated to Councillors in certain areas.

Jim owns the Shambles Museum at Newent and, we understand, will be continuing with this and other interests in the area.



## DOCUMENT CONVERSION SERVICES

Your Books, Historical Records, Illustrations, Graphics, Photographs, Catalogues or any paper based document, professionally converted into popular computer files for editing, archiving, e-mailing, electronic magazines, web-sites etc., or Portable Document Format for universal viewing and distribution. Have the resulting files, or your existing files or presentations, stored on CD-ROM to benefit from longevity, reduced storage space, rapid retrieval and low cost distribution. Any size task.

Free Phone/Fax: 0800 0151 638  
E-mail: [info@doc-conversions.co.uk](mailto:info@doc-conversions.co.uk)  
PO Box 39, Ross on Wye, HR9 7YR

# RESTORATION UPDATE

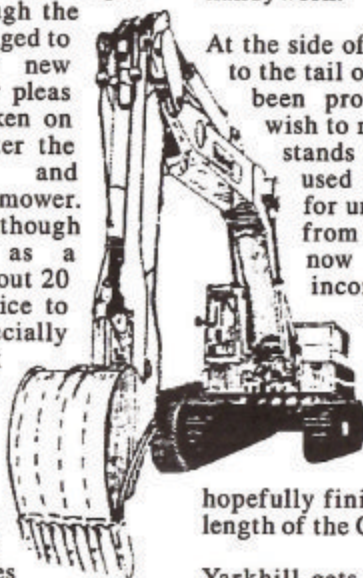
*By Brian Fox & Nigel Bailey*

I made a big mistake last time when I said that Spring would soon be with us and consequently we could expect warm weather and hoards of new volunteers (*writes Brian Fox*). After starting our sustans back in February the April weather has been diabolical, particularly on Tuesdays, with cold or wet conditions every day and progress has slowed despite attempts to work through the rain. We have still managed to recruit a couple of new volunteers through our pleas and Colin has now taken on the job of looking after the grass mowing and maintenance of the mower. John has also joined although he doesn't qualify as a Wrinkly, being only about 20 years of age, but its nice to have him around especially when he is there to pick us olduns up if we fall over!

The non-towpath bank is now taking shape with rough flagstones being re-laid at the back of the coping stones as they are completed. The ground behind the stones is being re-graded and grass seed will be sown at an opportune moment. Now that we have almost finished this next section of wall it, unfortunately, means that we shall once again descend into the depths of the lock chamber to start at the bottom again.

We now have a magnificent new wooden footbridge across the tail end of the lock, manufactured by the WRGies from timber retrieved from Over hospital and put in place one weekend in February. The design is

based on the one in the photograph on the cover of David Bick's history of the Canal and sits very nicely on the newly constructed walls. It now provides a viewing platform for visitors who wish to have a closer look at what is going on in the lock chamber but also gives the workers a chance to stop and admire their handywork.



At the side of the towpath, adjacent to the tail of the lock, a bench has been provided for those who wish to rest their weary legs. It stands on an area previously used as a dumping ground for unusable stone retrieved from the old lock - this has now largely been incorporated in the backfill behind the facing stone. A lot of the smaller stone goes on the towpath as hardcore so nothing is being wasted and we hopefully finish up with a very tidy length of the Canal.

Yarkhill gets a mention once again as we have recently had the apparent collapse of a culvert which runs under the Canal at the Barrs Lock end where it is on a high embankment. It is not clear exactly what has happened but a hole has appeared in the bed of the Canal through which all the water is now running as if down a plug hole in a bath. Plans had been made to hire a mini digger and go in at the end of April but heavy rain the previous week meant that the Canal at this point had still managed to fill to the brim with water, despite the leak, and the operation has been

## RESTORATION UPDATE . . . continued

postponed. We still must go in, hopefully in May, when we shall be plugging the leak and also clearing fallen timber and removing willow saplings from the bed before they get any bigger.

Before I hand over to Nigel I feel I should pass comment on Brian Moults suggested nickname of "the Chain Gang" for his Wednesday group at Over. I'm afraid it doesn't work that way Brian - nicknames are chosen by those who watch and admire your efforts and not by you yourself! Those at Oxenhall didn't choose to be called Wrinklies; it was invented by a Member who is no longer active (initials SD) and the name has stuck. I reckon that anyone who works at Over on Wednesdays, or weekends, should be called a "Wendy". It goes well with Wrinklies and WRGies, but perhaps there is someone out there who can think of something more appropriate!

Once again, Nigel Bailey reports tremendous progress at Over!

On the first weekend after the New Year a dozen members of KESCRG [Kent & East Sussex Canal Restoration Group] joined us. They carried out some repairs to the new site hut, progressed the excavations around the slipway and built a wooden footbridge for the lock at Oxenhall using timber from salvaged roof beams.

Before January was out, WRG were upon us - 30 helpers, organised by Adrian Fry and staying at Hartpur Village Hall. We completed the brickwork on all the concrete

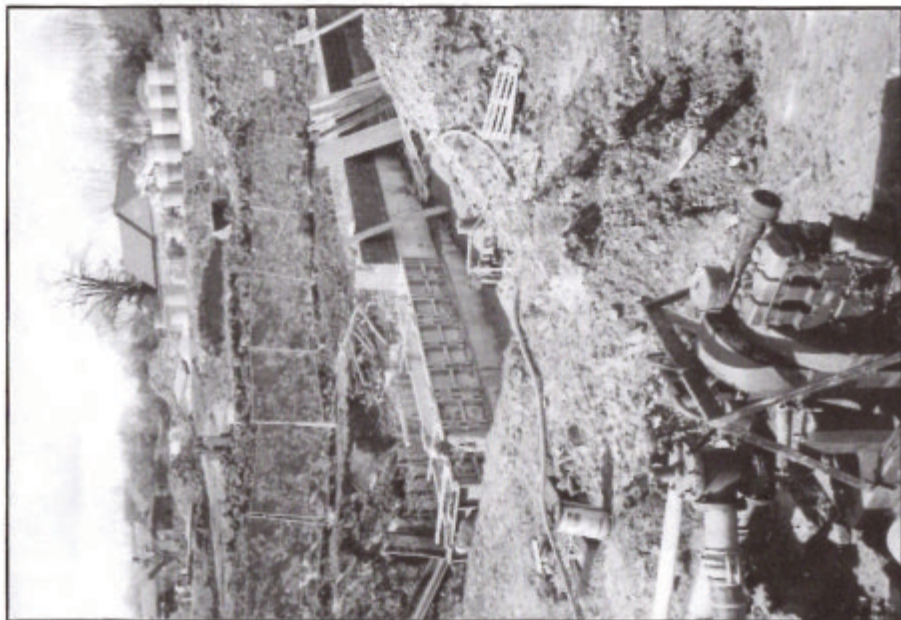
poured so far, and on the slipway, we topped off the brick with blue copings. A small group was keen enough to backfill the slipway with crusher - by hand!

A start was made filling the gabions with damaged bricks while another group carried out some careful investigations to locate the original stop plank grooves on the inside end of the lock. During the weekend the generator was returned to us by Neil Jones who has stripped and repaired it [thank you!].

We have continued filling pallets with salvaged bricks at quite a pace so we have had to scrounge more pallets, this time from Twigs and Hurrans Garden Centres and from Travis Perkins in Cheltenham. Our favourite pallet source remains Grahams of Gloucester because they deliver for us, saving us having to borrow a lorry. Their driver on a recent delivery recalled catching newts some 45 years ago in the remnant of the canal cut across Alney Island.

Another 30-strong WRG party in February made progress widening and surfacing the area for our new storage compound. They even spread topsoil behind the slipway walls so that, at last, something is actually finished.

We started to extract and pallet the building stone from the heap of rubble "formerly known as the barn". It had been sitting on the Swan Hill side of the fence, very close to their piling operations. The job took us several weeks and as we neared the end of the job, locating

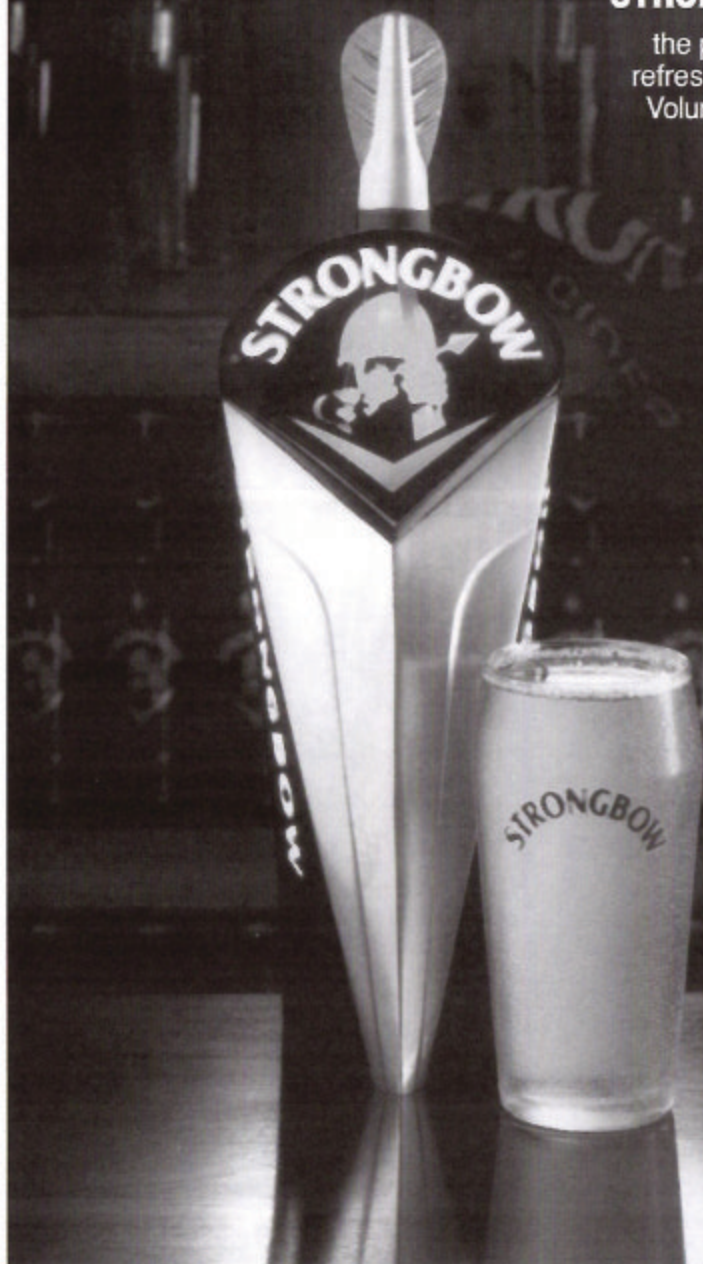


ABOVE: The short limb of The Wharf pictured from part way along the long limb.  
 BELOW: Pouring the sub-base foundation to extend the short limb of The Wharf.  
 RIGHT: Base foundation poured and shattering in place for the second lift. The  
 Bat Roost building [article on p.4] can just be seen top right.

(David Penny)

## **STRONGBOW**

the pint to  
refresh Canal  
Volunteers!



## RESTORATION UPDATE... continued

the last few stones with picks and forks, Paul Brown paused and asked "Are you absolutely certain there's a barn under here?"

The Over SPG decided to alternate its fortnightly meetings between The Verzhons (convenient for Hereford folk) with a venue nearer to Gloucester. We chose The Royal Exchange at Hartpury because we could have a meeting room free of charge on the strength of the not inconsiderable quantity of beer likely to be purchased there by WRG this year while staying at the nearby village hall.

We rolled up for our first meeting to find the chimney on fire! We began the meeting just as the firemen arrived but soon called a halt because fragments of chimney were falling on the corrugated plastic roof over our heads. Moral: always keep your hard hat within easy reach.

A part of the firemen's procedure involved pumping water from a bucket using a leaky stirrup pump. If we had had a camera handy, we could have added a picture to John Palmer's "Bizarre Pumps I Have Known" collection.

More concrete was poured during February enabling backfilling to start behind the short arm. This work continued during the week-long WRG camp in March which was aided by beautiful weather so that almost the whole length of completed wall is backfilled. Excavation to bed level was progressed out of the basin as far as Penstocks Road and the

underground portions of the concrete Victorian sewage works were exposed ready for breaking up by the Royal Engineers. During the week, repairs and painting of the new site hut were completed, enabling us to adopt it as our new base. We also completed the move of all our stored materials and the old (dental van) site hut to the new compound, well away from Swan Hill's building activities.

A new road was built and surfaced with crusher to enable the Environment Agency to maintain access to the sluice gates on the River Leadon. It occurs to me that with whole bricks kept for building work, half bricks used to fill gabions and crushed brick and concrete used for surfacing and backfill, we have nearly succeeded in recycling the entire hospital complex.

We've been making efforts to attract more local volunteers for Over. We manned a display stand for a Saturday in Eastgate Shopping Centre and, two weeks later, followed it up with an open day at the site. Well over 100 people were taken on a guided tour and refreshed with tea and cakes. We met a few more people who had been treated at Over hospital as youngsters in the 1940s and 50s - 1 tonsillectomy, 1 circumcision and 1 case of Scarlet Fever, and another who had worked there as a nurse. So far we have gained four new helpers.

I phoned my contact at Leyhill Open Prison to see if we could borrow a few inmates again. He said they were undergoing a big re-organisation

*“ we have nearly succeeded in recycling the entire hospital complex . . . ”*

## RESTORATION UPDATE... continued

and he had lost some of his prisoners. I thought this was very remiss for a prison officer!

In mid April another WRG week camp led to the completion of concrete pouring on the long arm and the start of its brickwork, concrete pouring and temporary piling on the more difficult short arm and a visit from the TA from Monmouth who made a start to demolishing the hospital's original sewage works - which some helpful Victorian architect plonked right on the line of the canal.

We are now working to a detailed plan which will enable us to fill the basin in September. We are on schedule - *just*. There is a great deal still to do but we have a tremendous commitment from WRG to help us succeed. A little more *local* help would enable us to get ahead and provide a contingency in case we hit any serious delays.

The Over site has a deadline to meet! Why not play a part in the success? *It's not all heavy work - there is something for everyone.* You will be made most welcome; just 'phone for details.

New volunteers: It is **ESSENTIAL** to 'phone **BEFORE** arriving on site.  
*Thank you.*

*please call:-*

*Oxenhall:-* Brian Fox (01432) 358 628

*Over:-* Paul Brown (01386) 443 826  
Nigel Bailey (01452) 533 835  
Brian Moulit (01432) 264 366

**HEALTH & SAFETY:** All of our restoration sites are subject to detailed safety policies. ALL persons working on these sites are required to comply with these policies at all times - for their own safety and for the safety of others. Safety footwear and safety helmets are mandatory.

Motorised plant and equipment may only be operated by holders of current H&G CT or WRG permits relating to the plant/equipment in question. Permits must be available for inspection at any time. Failure to observe this invalidates insurance cover.

## An Invitation

Come and see the progress at  
Over - BBQ on Sunday 25th June;  
Open Day on Sunday 16th July -  
further details on p.21

## Oxenhall Funding Continues

Forest of Dean District Council have announced a further grant of £1,000 towards phase 4 of the restoration of House Lock, Oxenhall. This is the 4th such payment from the Council in respect of our voluntary work to this Grade II Listed structure.

Fundraising Officer David Penny said "without this ongoing support from the Forest of Dean District Council our work at Oxenhall would have come to a halt long ago. We are most grateful for the support and

encouragement of the Members and Officers and look forward to continued steady progress on what is turning out to be a much admired section of the Canal."

Recently Member Nigel Freeman (who restored, and lives in, the adjacent Lock Cottage) donated £1,000. Some has been used to recreate the pedestrian bridge over the tail of the Lock [photo p.33]. "We are also exceedingly grateful for Nigel's ongoing support" said David.

# MIDWINTER TRANSPORT

Established 16 years

**TOTALLY COMMITTED  
TO DELIVER**

*Refrigeration Specialists*

With a full range of vehicles  
including

- *Flat curtain sided and refrigerated*
- *From 1/2 tonne Escort to 38 tonne artic*
- *Hiab crane vehicle*
- *Nationwide*



**NEWENT 01531 820276**

Fax: 01531 821303

Little Carswells Farm, Upleadon, Newent, GL18 1ED

[info@midwinter-transport.co.uk](mailto:info@midwinter-transport.co.uk)

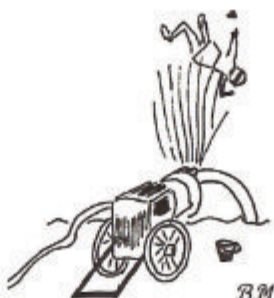
# The Chain Gang

*Brian Moults leads our regular Wednesday volunteers at Over. Having once had their numbers swelled by three prisoners they decided to call themselves "The Chain Gang" - or does it have something to do with the nature of the tasks that they have so far undertaken?*

From its small beginnings in October of last year, the Wednesday Working Party at Over has started to grow in size as well as stature. Following an Open Day in March new stalwarts came forward to swell our merry band. The CG now comprises, at the time of going to press, six good men and true, each with individual skills to offer, all ex-professionals in their particular fields of expertise. We were seven, but we have loaned Charlie, who will work on a roving commission, to the other work teams on the Canal until Over site is in a condition to need his particular skills.

When we started, CG expected to do the graft others didn't fancy, such as brick salvage from the hospital ward blocks, necessary work to keep the wharf wall brickies materials available. Hard graft but worthwhile! A four month sentence which saw the skid steer hard-pressed to keep up with our output. Now, with our increased numbers, the work content has expanded to preparing steel reinforcement for the last sections of concrete to be

poured; moving caravans about the site by sheer muscle-power; adapting old caravans to flatbed site trailers for material movement around site; designing pump hose repair kits from scrap plastic drainage pipes - as well as changing wheels on site plant and repairing the new site hut! Who knows what our next jobs will be?




The instructions clearly state - "replace priming nut before pump begins to suck".

By the time the next edition of *The Wharfinger* is printed, CG will have upgraded the 'new' site hut by laying an alternative floor covering (to mud on linoleum) and also made a start on the Information Room (also in the site hut).

As well as being very necessary work towards the completion of Phase 1 of the Over Project, working with the Wednesday Team is

good for the soul. The more bodies we have, the more preparation we can achieve to assist the weekend teams. So-come along and join us on a Wednesday, *become part of the Chain Gang.*

The Chain Gang:- *Brian, Colin, Michael, John, Ted and Bryan.* 

## Moving Home?

Please remember to tell the Canal Trust if you are moving. A surprising number of our Members forget! Please write with details of your old and new address to 6 Castle Street, Hereford,

HR1 2NL. If you move close to the mailing of an edition of *The Wharfinger* then a single edition might go to your old address - so please tell us as soon as possible.

# Money!

Our sincere thanks to the Inland Waterways Association's Middlesex and London Branches. The two IWA Branches joined together to donate £250 each so that the gearbox of "Dream Machine" could be repaired.


Dream Machine is a dumper that could be in near constant use at Over; the £500 enabled our own volunteers to bring the machine back into service as rapidly as possible.

Thank you to the Members who made donations when renewing their Membership subscription; it is greatly appreciated.

Our thanks also to The Environment Agency (Midlands Region) for a grant of £1,000 specifically towards the restoration of part of the former

Mill Race at Over. A section of the old Mill Race will form part of the abstraction and overflow channels for the Canal. Apart from providing an essential part of the future water management for the Canal it will also bring back into use a section of an historical water feature.

Regular readers will know that Members Barbara and Ray Moses have attended the annual Gloucester Boat Jumble for the past few years in order to raise funds for the H&G Canal Trust. This year they broke all records - by a factor of three!

Some £330 was raised thanks to their hard work - and the donations of Members. Particular thanks for the donation of a folding bicycle and for the considerable efforts that the donors took to deliver it. 

## GRIFFITHS MARSHALL

*Chartered Accountants  
Registered Auditors*

### FOR QUALITY BUSINESS ADVICE

- |                                                              |                                                               |
|--------------------------------------------------------------|---------------------------------------------------------------|
| <input checked="" type="checkbox"/> Free Initial Meeting     | <input checked="" type="checkbox"/> Auditing                  |
| <input checked="" type="checkbox"/> Tax Planning Advice      | <input checked="" type="checkbox"/> Annual Accounts           |
| <input checked="" type="checkbox"/> Budgets & Forecasts      | <input checked="" type="checkbox"/> Computer Expertise        |
| <input checked="" type="checkbox"/> Positive Business Advice | <input checked="" type="checkbox"/> Management Accounting     |
| including Start-ups, Cash Flow                               | <input checked="" type="checkbox"/> Corporate Troubleshooting |

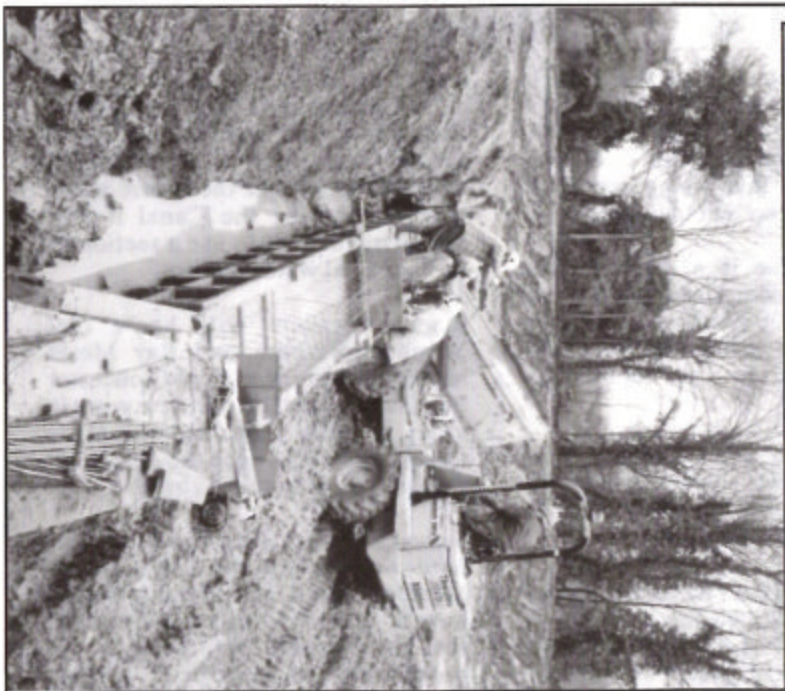
Computer Contractor Specialist  
Self Assessment Assistance

**Tel: (01452) 520000 Fax: (01452) 309316**

e-mail: [info@geeyem.co.uk](mailto:info@geeyem.co.uk)

Beaumont House, 172 Southgate Street, Gloucester, GL1 2EZ

**LEFT:** The first lift foundations are poured for the last 15 metres of the long limb of The Wharf. This is cranked to lead into the bend of the Canal.  
**RIGHT:** Earlier (in sunny weather) the backfilling to the rear of The Wharf was commenced and was carefully compacted. A land drainage system was first installed at the base of the wall. This and the rear of the wall is covered in geotextile to prevent "fines" blocking the drain points. (Cliff Penny)



## CHARACTER BOAT HIRE?



We don't pretend to have the latest 'state of the art' canal boats for hire, with the most modern accessories and gadgets. We do, however, operate a fleet of great variety and character, including interesting traditional style boats, some with boatman's cabins and traditional controls, comfortable semi-trads and cruisers. Sizes range from 2-12 berths.

Our location is central for the Llangollen Canal, Cheshire Ring, 4 Counties Ring, Chester Branch and the Caldon Canal. No previous experience required. Group bookings and pets welcome.

Send for our brochure:

\*Low cost "bargain breaks  
from £45 each  
(6 berth)\*



### MIDDLEWICH NARROWBOATS

CANAL TERRACE  
MIDDLEWICH, CHESHIRE, CW10 9BD  
Tel: Middlewich (01606) 832460  
Website: [www.middlewichboats.co.uk](http://www.middlewichboats.co.uk)



Part of the Wrinklies team seen making good progress at House Lock, Oxenhall.  
The new footbridge (constructed by WRG) sits across the tail of the Lock. (Brian Fox.)

## Coasting Along

As briefly previewed in the last edition of *The Wharfinger* our Trading Company have commissioned well known waterways artist Garth Allan to paint *Oxenhall Lock Cottage and House Lock*...

Of course, those of you who know the site will realise that we have not yet finished our work there. The Wrinklies (our regular Tuesday working party at Oxenhall) are pressing on with the reconstruction of the lock chamber before paddle gear and lock gates would even be contemplated. Hence the title of Garth Allan's watercolour is



"Oxenhall Lock, past, present and future". Coasters are £1.25 each (£1 for 6 or more); Christmas Cards cost £3 for a pack of 5 cards [Discounts available for large orders]. Mail order please add 10% to cover p&p. Penny Shetliffe would be pleased to receive your order - see 'Contacts' on inside back cover. ■ BM

### **RDD Insurance Brokers**

**Moulsham Mill Centre, Parkway,  
Chelmsford, Essex, CM2 7PX**

*All Industrial and Commercial Insurance transacted.*

*Specialists in :-*

<i>Motor Trade</i>	<i>Hotels</i>
<i>Charities</i>	<i>Retail</i>
<i>Schools</i>	<i>Engineering</i>
<i>Nursing Homes</i>	
<i>Printers/Publishers</i>	

*We guarantee a professional, independent and personal service on all Insurance matters without obligation.*

*For a free consultation call us today on :-*

**Tel (01245) 252414**

**Fax (01245) 346802**

## [not quite] The Last Page

From time to time our supporters help us out in unusual ways; Corporate Member Simon Hayward was working near Bristol on a site where there was a quantity of reinforcement mesh that was surplus to requirements - about a dozen large sheets in total. Having put in a good word for us it was ours - subject to prompt collection. A quick phone call to Midwinter Transport, of Newent, and the large sheets of mesh were on a lorry within 48 hours and delivered to Over without charge our sincere thanks to Simon Hayward and Hedley Midwinter.

Our thanks also to Ledbury Kitchen & Bathroom Centre (formerly Plumlec) of New Street, Ledbury, who have generously donated some specialist waterproof electrical connectors and circuit breakers for use in the Canal Trust site accommodation at Over; thanks to Member Chris Clark for sourcing these for us.

Regular readers will hopefully note that less of this edition has been written by the Editor! My grateful thanks to our contributors for making this possible. However, I am aware that there is much going on within the Canal Trust that still does

not get into these pages. Further articles and reports would be welcomed as would more letters for possible publication.

Time really is running out if you don't want to miss the opportunity of being able to say 'I helped with that' when phase 1 of the Over site is officially opened at the end of September. All the contacts are on page 28.

If you don't fancy getting muddy, then David Penny is starting to assemble the team of volunteers who will fit out the new Lock Cottage at Over. Carpentry, plumbing, electrical, decorating and related skills will all be required.

To some it may be boring, but the Annual General Meeting is an essential part of a registered Charity's annual activities. This year we are moving to The Verzons as we have proved that this venue is capable of drawing the numbers and has good facilities. We do our utmost to make the evening as informative as possible and the illustrated guide to our finances that Liz Connors produces is well worth seeing! So please do support us on Tuesday 20th June.



### **UK Subscription rates :-**

INDIVIDUAL	£ 7.50	JOINT/FAMILY	£ 10
SENIOR CITIZEN £ 5	JOINT SEN'R CIT'N £ 7	CORPORATE	£ 20

### **LIFE MEMBERSHIP :-**

INDIVIDUAL	£ 150	JOINT/FAMILY	£ 200
SENIOR CITIZEN £ 80	JOINT SEN'R CIT'N £ 110	CORPORATE	£ 400

Please Covenant your Subscription - as a Registered Charity we can increase the value to the Canal Trust by 33% without any cost to you. Payment by Standing Order or by Credit Card mandate greatly assists us and payment remains under your control. All payments to 6, CASTLE STREET, HEREFORD, HR1 2NL please.

**COPY DEADLINE FOR THE NEXT EDITION IS SATURDAY, 1st JULY**

Printed by Print Plus, 126 Widemarsh Street, Hereford, HR4 9HN (01432) 272025  
The Wharfinger was compiled by Cliff Penny using *JetSetter* British software.



*At the heart  
of England's waterways*

Braunston Marina are  
proud to support  
the restoration of the  
Herefordshire & Gloucestershire  
Canal

Working *together*, in the present, to revive the  
past, and secure a better future. CH&P

Braunston Marina,  
The Wharf, Braunston, Nr Daventry,  
Northamptonshire, NN11 7JH  
Telephone: 01788 891373  
Fax: 01788 891436

## CONTACTS

### **Liz Connors,**

18, St. Ethelbert Close,  
SUTTON St. NICHOLAS,  
Hereford, HR1 3BF  
Tel/Fax:- (01432) 880 155

### **Brian Fox,**

1, Holmer Hall Cottages,  
Roman Road,  
HEREFORD, HR4 9QU  
Tel:- (01432) 358 628

### **Nigel Jefferies,**

Tel:- (01432) 850 661

### **Tom Bennett,**

Tel:- (01981) 500 258

### **Barbara & Ray Moses**

Tel:- (01989) 780 325

### **Cliff Penny/David Penny,**

"Coppice", BURLEY GATE,  
Hereford, HR1 3QS  
Tel:- (01432) 820 420  
Fax:- (01432) 820 877

### **Janet & Brian Moul,**

18, Coningsby Court,  
Coningsby Street,  
HEREFORD, HR1 2DF  
Tel:- (01432) 264 366

### **Joyce Potts,**

Tel:- (01981) 590 372

### **Paul Brown,**

Tel:- (01386) 443 826

### **Nigel Bailey,**

Tel:- (01452) 533 835

### **Penny & George Shetliffe,**

Mail Order Sales,  
Little Lugg, CROSS KEYS,  
Hereford, HR1 3NP  
Tel:- (01432) 820 233

**Dick Skeet, (01568) 797 032**

### **WANT TO HELP ?**

The Canal Trust is always in need of new volunteers as our activities continue to expand. We can normally find a use for any skill from chefs to first aiders, brickies to those willing to help with shovel or pen.

**CONTACT ANYONE ABOVE  
T O D A Y !**

### **ADVERTISING IN THE WHARFINGER**

Show the support of your business by advertising in **The Wharfinger**. Rates start at £12, there is a series discount, and we will gladly design your advertisement free of charge. *Cliff Penny has the details.*

**VISIT OUR WEB SITE: - [www.h-g-canal.org.uk](http://www.h-g-canal.org.uk)**

Unless specifically stated any opinions expressed in this newsletter are those of the author and do not necessarily reflect the formal policy of the Herefordshire and Gloucestershire Canal Trust. The Trust accepts no liability for any matter printed in this newsletter nor for any advertising that may be included. Reproduction of extracts from the newsletter is welcomed provided that full acknowledgement is given.

Membership records are computerised. In accordance with the Data Protection Act 1984 [Licence No. A3099046], your entry is available for inspection if you send a SAE to the Membership Secretary.

Whilst we try to ensure dates are correct please verify them with a relevant Organiser.

© 2000

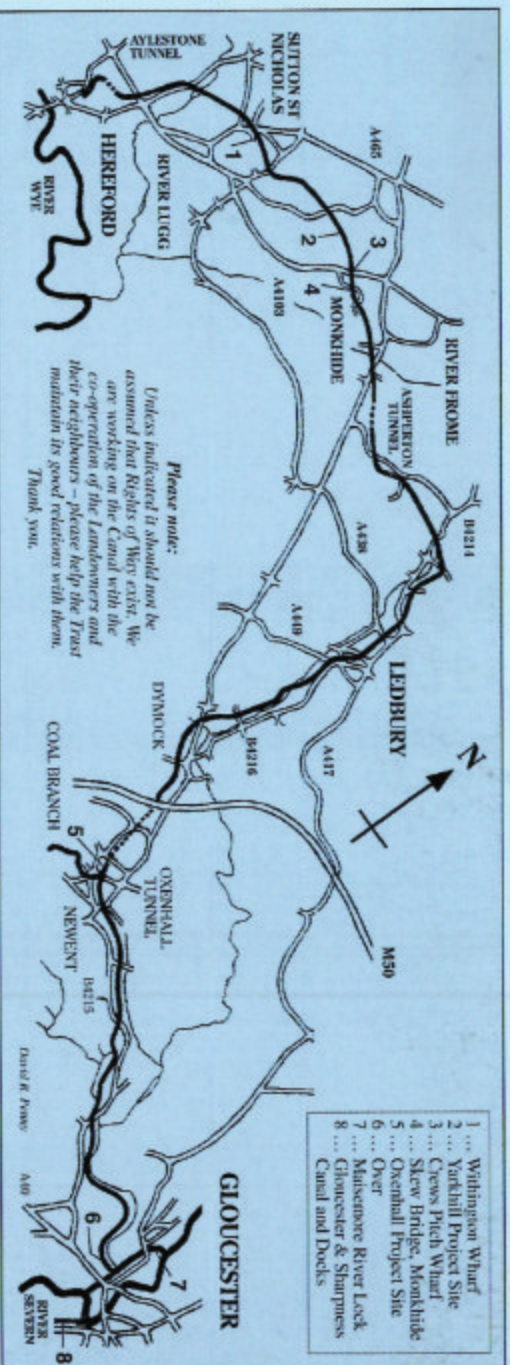
Published by the Herefordshire and Gloucestershire Canal Trust.

**ALL MEMBERSHIP CORRESPONDENCE TO:- (sae appreciated, please)**

**H & G CANAL TRUST, 6 Castle Street, Hereford, HR1 2NL**

The Herefordshire and Gloucestershire Canal Trust is a non-profit distributing Company limited by guarantee [No.2704407], and is registered as a Charity [No.1010721]  
H & G Canal (Sales) Ltd. is the Trust's wholly owned Trading Company [No.2710215]  
Registered Office:- 3, Norfolk Court, Norfolk Road, Rickmansworth, WD3 1LT

# THE HEREFORDSHIRE AND GLOUCESTERSHIRE CANAL



Work started in 1792 but was not completed until 1845, making this the last major route built in Britain, but for the navigations of Birmingham and the Manchester Ship Canal. The Canal stretched for 34 miles from the River Severn at Gloucester, via Newent, Dymock and Ledbury to the City of Hereford utilising some 22 locks and 3 tunnels. The Canal was formally closed in 1881 to allow construction of the Ledbury to Gloucester railway and this in its turn was closed by Dr Beeching in 1964.

The Canal Society was formed in 1983 and replaced in 1992 by the Herefordshire and Gloucestershire Canal Trust, a registered charity. The Trust has an ordinary and corporate membership exceeding 700 from all over the country – and abroad! Our objective is to fully restore the 34 mile Canal, from its connection with the 2,500 mile inland waterways network at Gloucester to the centre of Hereford. A Steering Committee of the Local Authorities, Environment Agency, etc. has been formed by the Trust to assist in progressing this objective. We have a major restoration site in each county, which together extend to some 3 miles.