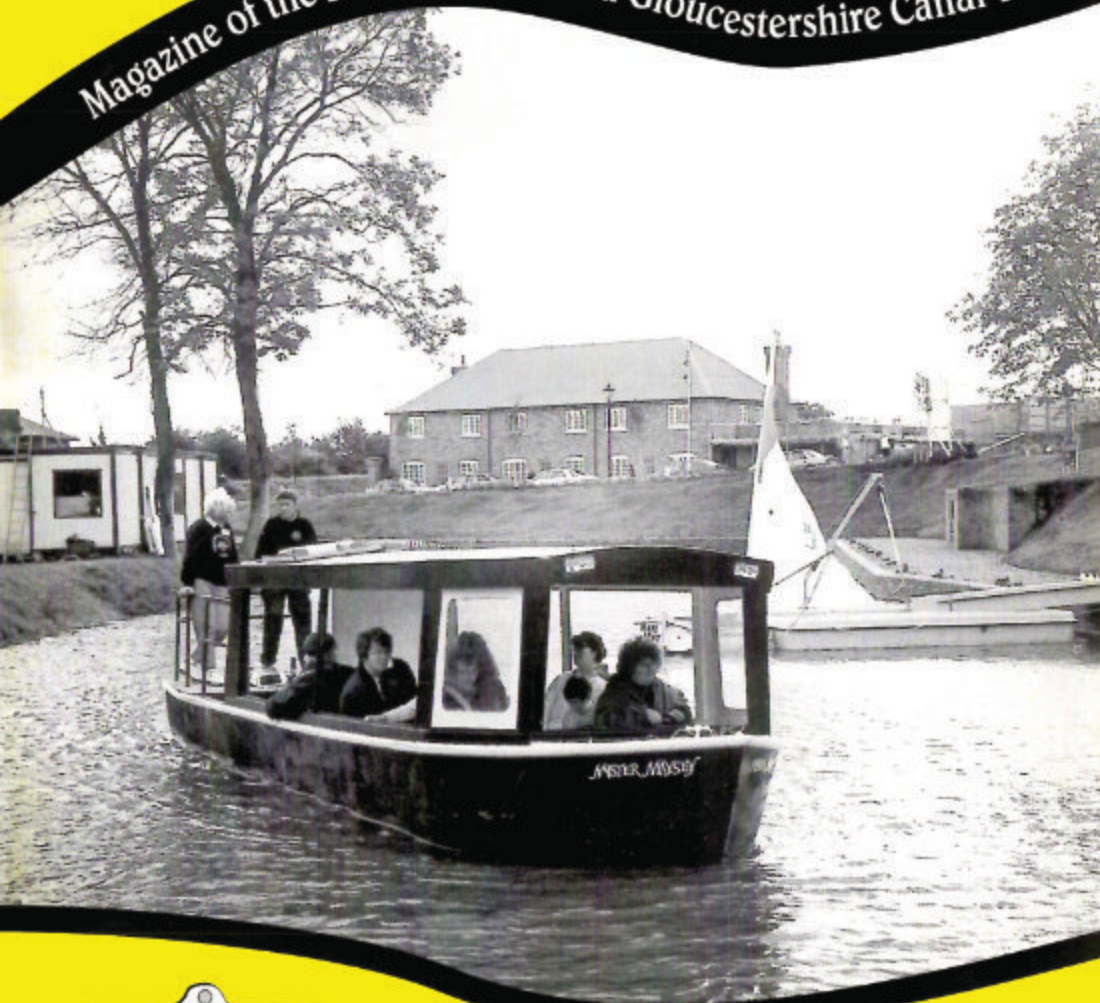


The **Wharfinger**

Magazine of the Herefordshire and Gloucestershire Canal Trust



Summer 2001

50p
free to members



WHO DOES WHAT?

WORKING TOGETHER, IN THE PRESENT, TO REVIVE THE PAST, AND SECURE A BETTER FUTURE®

Vice President: *R. E. Barnes TD.*

Chairman of Council of Management:
Will Frecknall

Finance:

Treasurer/Committee Chairman
Liz Connors

Committee:
*Brian Fox, David Penny,
Nigel Jefferies, Tom Bennett*

Restoration:

Wrinklies Coordinator: *Brian Fox*
Plant – Oxenhall: *Tom Bennett*
Health and Safety Officer:
Tony Austin-Bailey

Over Special Projects Group

Project Director: *David Penny*
Secretary/CDM Planning Supervisor
Nigel Bailey

PR: *Nigel Bailey, Jane Jones*

Committee

*Ted Beagles, Mike Bowden,
Paul Brown, Adrian Fry,
Roy Jamieson, Maggie Jones,
Wilf Jones, Philip Marshall*

Fundraising Sub Committee

*Liz Bailey, Nigel Bailey, Mike Bowden,
Maggie Jones, David Penny*

Liaison:

Local Authority/Planning
Penny Environmental & Planning
Landowner: *Brian Fox*

Publicity:

Social/H&GCS Events:
Brian Fox

Over/Web Master: *Nigel Bailey*

Membership:

Secretary: *Nigel Jefferies*
Gift Aid: *Liz Connors*

Social:

Events: *Janet Moul*

Support to Council of Management:

Minutes: *Tony Austin Bailey*
Admin. *Dick Skeet, Heather Worth*

IWA nominated member

Will Frecknall

The Wharfinger:

Editor: *Cliff Penny*
Design/Production: *Maggie Jones*
Advertising: *Heather Worth*
Postmasters
*Ian and Francis Roper
D and M Gray, S McManus*

Talks and Walks:

Nigel Jefferies, Nigel Bailey

Those in italics are not Directors on the Council of Management, although they may be co-opted members.

THE TRADING COMPANY

H & G Canal Sales

DONATING ALL PROFITS TO THE CANAL TRUST

Chairman: *Brian Moul*
Secretary/Manning: *Janet Moul*
Treasurer/C of M Rep/Co. Secretary:
Liz Connors

Mail order sales/Sales goods:
Penny Shetliffe

Crafts Fairs: *Joyce Potts*
Committee: *Tom Bennett, Simon Dyer,
Ray and Barbara Moses, Dick Skeet,
Derek Weaver*

Boats Group

Chairman: *Dick Skeet*
Committee: *Ray and Barbara Moses,
Pat Skeet*

Those in italics are not Directors of the trading Company, although they may be co-opted members

Honary Posts:

Solicitors: *Sue Newbold, Gabb & Co., 25 King Street, Hereford.*
Archaeologist: *Ron Shoesmith*
Town & Country Planning: *Penny Environmental & Planning*

FRONT COVER: *Over Basin – Recreated by volunteers.*

CONTENTS

Editorial	3
Committee Matters	7
Moving a Hole!	10
The Castle	12
Restoration Fund	15
Social Events	16
Annual General Meeting	17
Over Open Days	21
Restoration Update	22
The Trading Co. Diary	27
The Mill Barn	29
Dr Robin Andrews	31
Plain Sailing	32
Not quite the last page	35
Contact names	<i>inside back cover</i>

INSURANCE

What will the name on your renewal notice be this Year?

Why not find out what the only company to specialise in Insurance for the Inland Waterways for the last 23 years can offer you!

**WE ALSO OFFER BOTH
THE IWA MEMBERS AND NABO
MEMBERS DISCOUNT POLICIES
AS PART OF OUR RANGE**

If you want to choose the boat cover you want for your boat, then perhaps we should be talking!

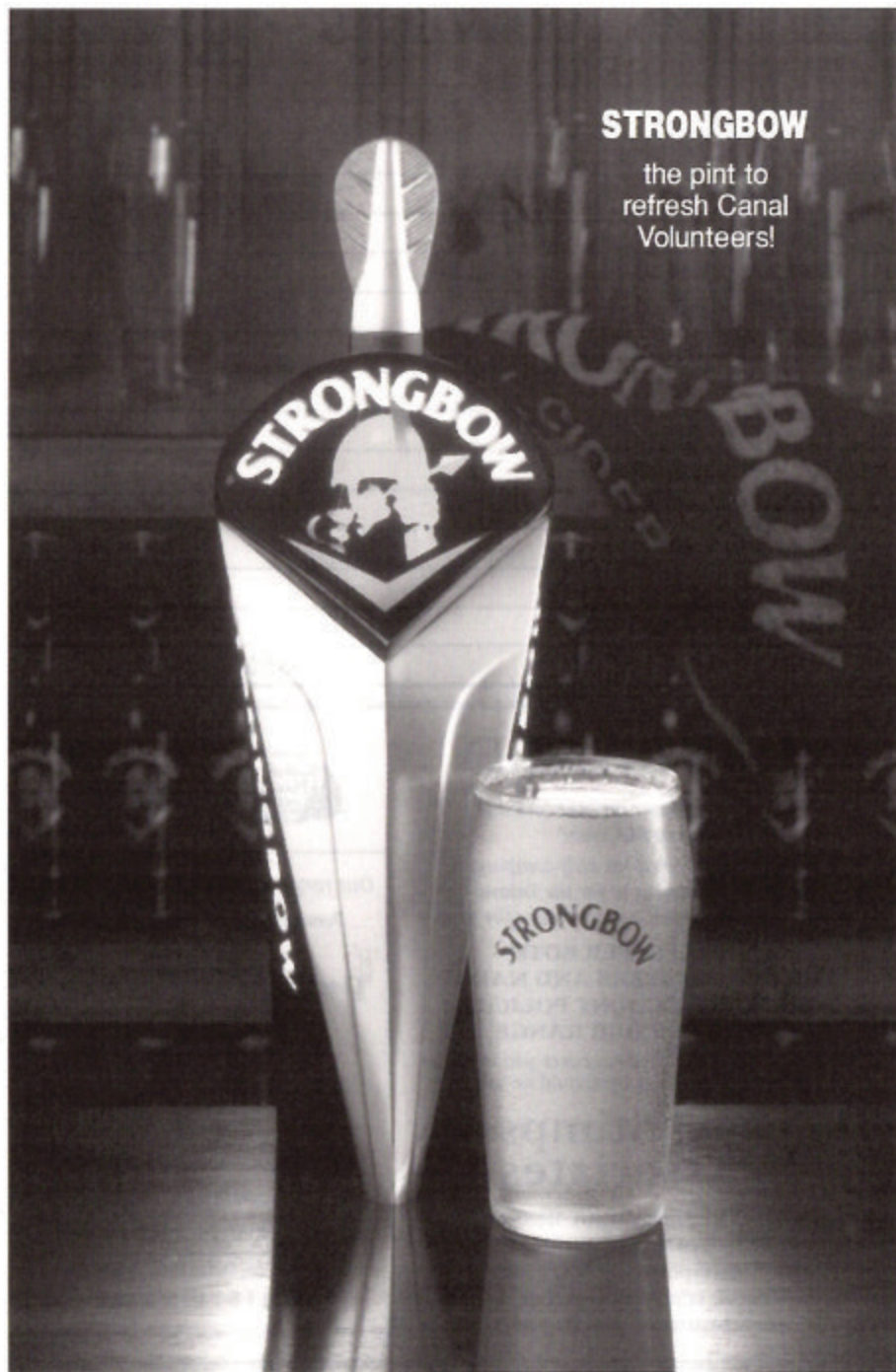
**Michael Stimpson
& Associates**

6 Norfolk Road, Rickmansworth, Herts WD3 1QE
Tel: (01923) 770425 Fax: (01923) 721559
24hr Answerphone (01923) 770255
email: stimpson@aol.com
www.insurance-marine.co.uk



Our range of policies include:-

- Personal Effects Cover at normal premium rate
- Cover with a major British Insurance Company
- No Excess on Third Party Claims
- Semi-protected No Claims Discount
- Up to 40% No Claims Discount
- Residential and Commercial use
- Wide Legal Protection Cover
- Fitting out Risks
- No survey on Older Craft if BSC to Parts 1 & 2 are in force



STRONGBOW

the pint to
refresh Canal
Volunteers!



by Cliff Penny

NEW LOOK

Welcome to your new look Summer edition of **The Wharfinger**. As mentioned in the previous edition we have a new team bringing you **The Wharfinger** from this edition onwards – hopefully spreading the load and enabling your quarterly magazine to go from strength to strength.

As the ongoing Editor the aims will remain as before – to bring to our Members and supporters news and information about the Canal, and the wholly voluntary work of the Canal Trust, in a hopefully interesting and informative manner. Some will be factual (and potentially boring!) whilst much will, we hope, be entertaining and of general interest. What will always be in our minds is the fact that for many Members **The Wharfinger** is all that they see for their membership subscription (and donations – *thank you*).

What we mustn't ever forget is that **The Wharfinger** is our ambassador; an essential means of communicating both our message and our achievements to an ever-growing number of interested third parties. The list of influential people who regularly receive **The Wharfinger** is ever growing. Most senior Officers of all of the local authorities, the Councillors, senior Officers in Government and

other statutory bodies, the Wildlife Trust's, every landowner (that we know of) along the length of the Canal ... the list is almost endless! A growing number of businesses also receive a copy – usually to reflect their assistance to the Canal Trust in some manner – (*thank you!*).

The results often speak for themselves; increasingly offers of help follow from an article in **The Wharfinger** or we suddenly receive a compliments slip with some vital information attached that we might otherwise have missed. What is critical is that we continue to produce a magazine that is widely read and continues to perform the range of 'duties' that we have come to expect of it.

So, who is the new team? King-pin is Maggie Jones who is responsible for Production/Design; the final layout will be produced by Maggie and then sent electronically to **Print Plus** (our printers) thus cutting out a couple of stages in the production process and giving the potential for even greater print quality. Advertising is now managed by Heather Worth who will also assume responsibility for our complimentary and non-Member databases as soon as we have resolved the transfer of data from one programme to another! Eagle eyed readers will note that the **Committee Matters** report now falls within the capable hands of our Minutes Secretary Tony Austin-Bailey. Our

regular contributors Nigel Bailey, Brian Fox and Brian and Janet Moulton complete the team – to each and everyone; our sincere thanks. However, as in the past, the buck stops with the Editor, so if something gets edited out or missed, or you don't like the way we do things in **The Wharfinger**, then please let me know. BUT please remember; just like the Council of Management and everyone else actively working for the Canal Trust we are all volunteers . . .

MEMBERSHIP AND GIFT AID

One of our Members has taken us to task for the article in edition 68 of **The Wharfinger** about the Membership renewal code (on every Members address label). He pointed out the obvious that the envelope is likely to have been consigned to the bin before the explanation of the renewal code was read. What he didn't know was that your Editor planned that a distinctive label be affixed to each envelope saying *"Stop! Please read page 12 before throwing away this envelope"*. Unfortunately the 'day job' became frantic and I forgot to produce the label or tell our despatch team about the plan ... – *my apologies*.

The article on Gift Aid in the last edition helped to prompt yet more Gift Aid declarations (*thank you*) from Members as a direct result of being reminded by that article – *including a declaration from myself!* However, there are still a significant number who will pay tax, in one form or another, who have not made that simple 'phone call to our Treasurer, or completed a Gift Aid form. In each of these cases the tax man will be banking money that could have come to the H&G Canal Trust. Sorry to those

who have already made a declaration for the repeated reminders – as a Registered Charity it would be remiss of us not to catch your attention and jog your memory. Our aim is to get as many Members as possible 'signed up' – the **regular** impact on our finances will be considerable and it involves no further paperwork or extra cost to you!

CONTINUING MEMBERSHIP GROWTH!

As will be reported at the AGM our paid up Membership has now passed the 900 mark with over 10% being Life Members. This growing support, from all over the country (and abroad), is most encouraging to all of the hard working volunteers. We hope that our new Members will get even more involved – to find out more about how you can do that please just 'phone the most relevant person listed on the inside back cover!

FOOT AND MOUTH

Farmers in both Gloucestershire and Herefordshire have been badly affected by the virus and the impact on the local economy, with so many others directly and indirectly affected, is significant. As stated in the last edition we took immediate steps to ensure that we did nothing to aggravate the situation and that remains our policy.

Until the crisis is formally declared to be over we continue to request that you do not visit the Canal with the exception of the Over site. Fortunately Over, bordered by a development site and two rivers, is low risk and there are still plenty of opportunities there to get involved in many tasks, or to support one of the published Open Days or other special events. Due to

Health and Safety considerations relating to ongoing restoration work the towpath is NOT publicly accessible at other times. Please note that there will be no car parking on site for casual visitors until much later in the year. Your co-operation in only visiting on public Open Days, and then parking off site, would be greatly appreciated.

A BUSY TIME!

There is (another!) busy period ahead and your support is needed more than ever – so there are more opportunities to support us if you wish (and can). Sponsorship opportunities continue at Over [see page 29] and this edition sees the launch of our new Restoration Fund [see page 15].

◆ CRP

The Wharfinger's



New Cover!

Our brand new front cover boasts a photograph of Over Basin on this occasion. It's not all Over though!

Instead of the cover changing colour to reflect the seasons, your new look magazine will rotate through different photo's depicting the four sites of major work on the canal – Over, Oxenhall, Monkhide and Farriery College, Hereford.

E. B. HAYWARD & Co.

We are a family run business established 39 years ago, specialising in sheetmetal work and fabrications in most metals including mild steel, stainless steel, aluminium, titanium, copper and brass.

Items can be manufactured to your own drawings and/or from instructions, in quantities from 1 to 10,000 off and can range from the size of a washer right up to fabrication of 1 tonne.

We have a wide client base with particular involvement in the hydraulic press, concrete, materials handling, feed and flour milling industries.

It has been our pleasure in supporting the Herefordshire and Gloucestershire Canal Trust for over 10 years, and we will continue to *work together in the present, to revive the past, and secure a better future.* ©HOGCT

For further details please
contact Simon Hayward –
Tel: 01452 700384
Fax: 01452 700740



SHEETMETAL WORKS
ASHLEWORTH
GLOUCESTER
GL19 4JJ

MIDWINTER TRANSPORT

Established 16 years

TOTALLY COMMITTED
TO DELIVER

Refrigeration Specialists

With a full range of vehicles
including

- Flat curtain sided and refrigerated
- From 1/2 tonne Escort to 38 tonne artic
- Hiab crane vehicle
- Nationwide



NEWENT 01531 820276

Fax: 01531 821303

Little Carswells Farm, Upleadon, Newent, GL18 1ED

info@midwinter-transport.co.uk



COMMITTEE *matters*



Tony Austin-Bailey reviews three Council of Management meetings so that our Members and supporters are kept up to date . . .

JANUARY COMMITTEE

Brian Fox, advised by Cliff Penny, continued to state our case to the Highways Agency, keeping Diana Organ in the picture.

The top stop plank at Oxenhall was removed as agreed to reduce flood waters at House Lock. It was decided that, although flooding above the site of the Top Lock is not our responsibility, we would cut a channel from the upper pound to the top lock in order to lower the level of the former. In the long term, we will consider storm weirs.

Following a query it was confirmed that Social Events publicity is being handled by Elizabeth Lloyd via local, national and waterways press.

Janet Moul is to prepare inputs for a database of grant aid sources.

Funds are unlikely to be in deficit this year because of higher than expected income and reduced expenditure.

Two work groups will be used at Oxenhall/Yarkhill, one for lock restoration, the other for Oxenhall plant maintenance, and for routine work at Yarkhill.

At Over, three committees will handle General Management, Fundraising and Events, and Wharf House (Interpretative Centre). It was agreed that Council should be closely involved in decision-making affecting Over.

Liz Bailey will represent the Trading Company in Gloucester. The Trading Company will reconsider the suggested balloon race because of the danger to wildlife of balloon debris.

Work on the trip boat, to improve access, will be completed by Easter; the name "Mister Maysey" is now official.

The Spring edition of The Wharfinger will be edited and prepared by Cliff Penny and edition 70 (Summer) by a team of volunteers under his editorial guidance.

FEBRUARY COMMITTEE

Brian Fox was continuing to liaise with the Highways Agency and keeping Diana Organ informed regarding the Newent nursery site. We would resist any plans that conflicted with local Planning constraints or with the spirit of John Prescott's document "*Waterways for Tomorrow*".



Boat trips on "Mister Maysey" prove very popular with visitors.

A Finance Committee suggestion that one good machine be made from the two existing excavators was rejected in line with advice from the Army, at Ashchurch, that a satisfactory machine could not be so created. Instead, both units would be moved to Oxenhall, the best to be used there, the other to provide spares. At the same time, it was recognised that Horsefair Wharf could not be allowed to become a scrapyard.

Concern was expressed that the Over Land Use Strategy Document had been published externally before Council had agreed it. David Penny stressed that failure to have issued it at that time would have severely prejudiced the Canal Trust's interests. He pointed out that the release had been in a manner that was perfectly normal, in fact essential, in such negotiations. After lengthy debate Council agreed a Policy that would apply in future to enable the urgent authorisation of such matters.

A business plan for the future of the Over site was in preparation by OSPG.

Janet Moulton has produced a list of funding charities in the area and passed it to Heather Worth, who is

going to maintain all databases bar Membership. In future, all such information will be passed to Heather; a list of the funding bodies/companies "in play" would be maintained by the Treasurer and would be checked by anyone making bids, prior to submission, to avoid possible duplication. It was agreed that a Restoration Fund, suggested by Nigel Bailey and OSPG, and based on a regular monthly standing order subscription, be set up, but in a manner which would not give offence to those Members and supporters who make regular donations [see page 15].

MARCH COMMITTEE

It was agreed that one slewing mechanism from the two excavators could be used at Over for a swing-bridge turntable.

The Over Business Plan is almost ready and a special Council meeting has been called to discuss it. Nigel Bailey indicated that the Business Plan was concerned, in the main, with Wharf House, and to a lesser extent with the rest of the site. The Wednesday Gang at Over was growing and recently numbered 12 people.

Gloucester Model Boat Club was welcomed as a new Corporate Member of the Trust.

It was agreed that all site activity would take account of the current Foot and Mouth Disease outbreak and would be governed by the wishes of

relevant landowners and the strictures of the local authority. Notwithstanding the above, work would continue at Over, as being a construction site rather than agricultural in nature it was not considered a risk. The standard letter sent to welcome new members is to be brought up-to-date.

Directors Elizabeth Connors, Brian Fox and Nigel Jefferies are due to

stand down by rotation at the next AGM, and Council members Nigel Bailey, Brian Moulton, Dick Skeet and Heather Worth to be nominated as directors.

Trust activity has received a favourable report in the IWA Annual Report, and Waterways World is to carry a two part article on the Canal.

◆ TA-B



Nigel Bailey



Brian Moulton



Dick Skeet



Heather Worth

RDD INSURANCE BROKERS

**MOULSHAM MILL CENTRE, PARKWAY,
CHELMSFORD, ESSEX, CM2 7PX**

All Industrial and Commercial Insurance transacted.

Specialists in: –

Motor Trade	Hotels
Charities	Retail
Schools	Engineering
Nursing Homes	
Printers/Publishers	

We guarantee a professional, independent and personal service on all matters without obligation.

For a free consultation call us today on: –

Tel: (01452) 252414

Fax: (01452) 346802

Moving a



Elsewhere in **The Wharfinger** you will read of what we have already done over the last few months at Over. You might well ask what are we about to do?

June will be a very busy month for the Over team. From the 8th to 24th June we have a major 'dig'. The focus of this work? Moving a hole from one end of site to the other (and a few other little tasks like building a 10m deep 2.5m diameter pump shaft . .)! Let me explain . . .

As part of the Planning Application for The Wharf House (which replaces the derelict Lock Cottage) a 37 space car park is proposed between the new building, the River Severn, the A40, and the site access road and will be accessed off the existing turning head. Parking is obviously critical to the success of the site as a whole and in particular The Wharf House. How do you accommodate such a car park on the entrance to a prestigious housing development - easy, hide it! Therefore from the outset this car park has been proposed to be sunk into the top of a new noise bund so that it is not visible from the housing development. In addition it will be densely planted with trees which will not only hide the car park from the A40 but will also give screening to the housing development.

However, to build this noise bund requires the placing of material in the flood plain. You cannot do this unless you create equal flood storage capacity elsewhere on site (and in fact our work on the site as a whole will have created a net gain in flood storage capacity). Hence we are spending 2 weeks moving flood storage capacity around the site! By the end of the two weeks, the car park should start looking like a car park (although it won't be completed until later in the year), and a long list of other works will have taken place. As normal we don't like only achieving one objective with each action - not cost effective. Therefore everywhere we create flood storage capacity is actually creating or restoring another feature of the site at the same time.

So in addition to the car park we will be:-

- ◆ Restoring about 150m of the 13th century Mill Race - this in itself will fulfil many functions - more about this in a future edition.
- ◆ Constructing the 6m deep 14m wide abstraction channel from the River Leaddon with its two short tunnels, and the 10m deep 2.5m diameter pump shaft that it connects to.
- ◆ Restoring most of the flood plain to various graded plateaux. A large lowered area will in due course be restored to water meadow once we have eradicated invasive weeds and the top soil removed in lowering this area will provide all the top soil for use on the banks of the car park.
- ◆ A general tidy up of the flood plain to consolidate our storage of bricks etc. into two distinct areas to permit the whole of the area alongside the River Severn to be properly managed

The **H&G RESTORATION**



fund

Over the next few years we have very ambitious plans for restoration which will require money as well as time. Currently, we are dependent on income from Membership and donations and running additional fund-raising events, especially at Over. The uncertainty of grant funding makes budgeting and restoration planning extremely difficult.

For the equivalent of half a pint of beer a week or a Sunday paper, you could help progress projects such as:

At OVER:

- ◆ **Restoring Mill Barn**
- ◆ **Rebuilding the lock**

At OXENHALL:

- ◆ **Complete restoration of House Lock**
- ◆ **Restoring the Ell Brook aqueduct**

Elsewhere

- ◆ **Other opportunities that may arise**

We have therefore introduced the Restoration Fund. We invite members and supporters to contribute a small, regular payment each month which will help finance specific projects.



*Thank you
for your
support*

If you would prefer to send a cheque to sponsor a specific item please tick the appropriate box.

☐ A tree £75

For Mill Barn:

☐ Corner stone £25

☐ Window £150

☐ Door £250

☐ Round window £500

Please clearly print below how you wish your donation to be recorded on site at Over (*max 30 characters*):



The Castle

Regular readers of **The Wharfinger** will have noted a number of references within the Restoration Update pages to a strange structure that has been built at Over – at one stage it was even rumoured that we were building a lighthouse to guide ‘shipping’ safely from the River Severn onto the H&G Canal! Another suggestion was that it was a new castle for Over. In fact the structure does serve an equally important purpose – it ensures that the Canal Trust complies with Environment Agency pollution prevention requirements. The strange structure – pictured during construction and completed – is in fact



officially described as a bunded fuel storage tank!

In keeping with everything else that has been completed (and is planned!) by the Canal Trust at Over what could have been an ugly utilitarian structure has been constructed with care and attention to detail. It has two main purposes. It elevates our essential fuel storage tank (so that we can refuel plant and equipment by gravity) and it ensures that any spillage of oil – including the whole contents of the tank



✦ The Castle under construction by some of the bricklaying team. From left to right: Nigel Bailey, Phil Cardy, John Wood, Roy Jamieson and Philip Marshall.

in a 'worst case scenario' – is prevented from seeping into the ground or from flowing into the two nearby rivers (or the Canal).

As with much of what we do what can be seen now is only a part of the story! First a sound concrete foundation had to be poured and then the outer walls were built up – with stout cross walls internally to support the weight of the heavy tank and its contents. Then the inner face of the outer walls had to be rendered so that they would be impervious to any leaking fuel oil.

Bunds beneath fuel tanks tend to fill with rainwater and there is a need for this clean water to be removed from time to time. Ours is designed with a small covered projecting area within which is a sump containing a bucket to make the task of checking and removing rainwater simple to perform regularly thus ensuring that the capacity is reserved for any oil spillage. In addition, scrap tiles from the hospital roof have been used to create a mini-roof at the base of the tank and the top of the bund; this is to minimise the entry of rainwater. Finally the tank has been painted 'Dick Van Dyke Brown' [see *Ed. 68, page 25*] and has been surrounded with trellis to minimise visual impact. Once the surrounding planting has become established this focus of a lot of hard work should soon merge into the background and be difficult to spot – the complete reverse of that mythical lighthouse or castle!

If there was an Environment Agency award for the best constructed bunded fuel tank – surely our volunteer bricklayers would be the winners?

◆ CRP

GEOprojects

Award winning maps & atlases

INLAND WATERWAYS OF BRITAIN SERIES



Britain's Waterways

A unique insight

Brian Roberts

A comprehensive directory of the inland waterways with special maps of over 50 individual waterways and regional coverage of the whole system.

£12.96

Inland Waterways of Britain

a national route planning map . . .

£5.75



waterways maps . . .

- Basingstoke Canal £4.00
- Birmingham Canal Navigations £4.75
- The Broads £4.75
- Caledonian Canal and the Great Glen £4.75
- Coventry and Ashby Canals £4.75
- including the Birmingham and Fazley Canal
- Grand Union Canal £4.75
- Map 1 Birmingham to Fenny Stratford £4.75
- Map 2 Braunston to Kings Langley £4.75
- Map 3 Fenny Stratford to the Thames £4.75
- Map 4 Leicester Line, Soar Navigation and Erewash Canal £4.75
- Kennet and Avon Canal £4.75
- Lee and Stort Navigations £4.00
- Leeds and Liverpool Canal £4.75
- Llangollen and Montgomery Canals £4.75
- Oxford Canal £4.75
- Shropshire Union Canal £4.75
- Staffordshire and Worcestershire Canal £4.75
- Thames, the river and the path £4.75
- Thames and London Rings Atlas £11.75
- Trent and Mersey Canal £4.75
- Map 1 Preston Brook to Fradley Junction £4.75
- Map 2 Great Haywood Junction to Cornwell Lock £4.75

in preparation . . .

- Forth and Clyde and Union Canals
- Huddersfield Broad and Narrow Canals
- Macclesfield and Peak Forest Canals
- Worcester and Birmingham Canal

Available from shops and waterside outlets or direct from:

GEOprojects (UK) Ltd
9-10 Southern Court • South Street
Reading • RG1 4QS.
Telephone: 0118 939 3567
Fax: 0118 959 8283
E-mail: sales@geoprojects.demon.co.uk
Call for details of credit card payments.



CHARACTER BOAT HIRE?



We don't pretend to have the latest 'state of the art' canal boats for hire, with the most modern accessories and gadgets. We do, however, operate a fleet of great variety and character, including interesting traditional style boats, some with boatman's cabins and traditional controls. comfortable semi-trads and cruisers. Sizes range from 2-12 berths.

Our location is central for the Llangollen Canal, Cheshire Ring, 4 Counties Ring, Chester Branch and the Caldon Canal. No previous experience required. Group bookings and pets welcome.

Send for our brochure:

*Low cost "bargain breaks
from £45 each
(6 berth)*



MIDDLEWICH NARROWBOATS

CANAL TERRACE
MIDDLEWICH, CHESHIRE, CW10 9BD
Tel: Middlewich (01606) 832460
Website: www.middlewichboats.co.uk



aquacraft

*A fresh approach to
Marine Insurance*

Drewe
INSURANCE

Tel: 01299 401663
Fax: 01299 403141

The Post House, 14 Load Street, Bewdley, Worcs. DY12 2AE

The **H&G RESTORATION**



fund

Over the next few years we have very ambitious plans for restoration which will require money as well as time. Currently, we are dependent on income from Membership and donations and running additional fund-raising events, especially at Over. The uncertainty of grant funding makes budgeting and restoration planning extremely difficult.

For the equivalent of half a pint of beer a week or a Sunday paper, you could help progress projects such as:

At OVER:

- ◆ ***Restoring Mill Barn***
- ◆ ***Rebuilding the lock***

At OXENHALL:

- ◆ ***Complete restoration of House Lock***
- ◆ ***Restoring the Ell Brook aqueduct***

Elsewhere

- ◆ ***Other opportunities that may arise***

We have therefore introduced the **Restoration Fund**. We invite members and supporters to contribute a small, regular payment each month which will help finance specific projects.

HOW IT WORKS:

- ◆ Contributors pay a minimum of £3 per month by Standing Order. Gift Aid can enhance this at no cost to the contributor
- ◆ Annually, The Wharfinger will report how the money has been spent
- ◆ Annually, we will invite contributors to an exclusive social event at an H&G restoration venue that has progressed during the previous year for a talk and/or tour and a buffet meal.

*Thank you
for your
support*



750 YEARS OF CHANGE AT OVER

By Nigel Bailey

All profits from the book are being donated to the H & G Canal Trust.



If you missed Nigel's encaptivating talk on the History of Over at the Verzhons in May, don't despair! There are still copies of his book available by sending a cheque for £6.70 payable to NJ Bailey to:-

30 Fieldfare, Abbeydale,
Gloucetster, GL4 4WF

SOCIAL EVENINGS

Monthly Gatherings at the Verzons

by Janet Moulton

EVERYONE IS WELCOME to our monthly meetings held on the 3rd Tuesday of every month and hosted by our "Master of Ceremonies" Lloyd Jones.

JUNE 19TH NOTE: 7.30pm start

Annual General Meeting

Our second AGM at The Verzons. Please come and support us – we do our best to get through the formalities quickly!

JULY 17TH 7.30pm for 8pm start

The Wye – part 2

Brian Draper returns to complete his fascinating illustrated guide to this wonderful River.

AUG 21ST 7.30pm for 8pm start

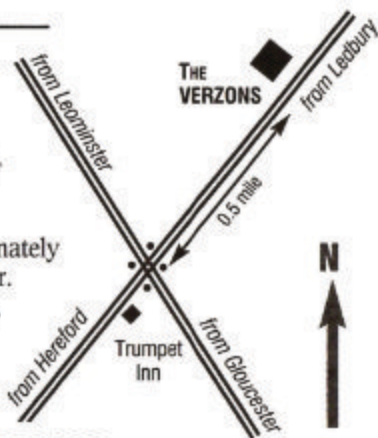
Natter and Noggin (or tea or coffee!)

No Official speaker but an opportunity to meet for a chat, a drink and an update on progress.

Meetings are held at **The Verzons Country House Hotel**, Trumpet, nr. Ledbury situated on the A438 Hereford to Ledbury road, half a mile on the Ledbury side of Trumpet crossroads (junction of the A438 with the A417).

A warm welcome, plenty of parking and approximately halfway along the canal from Hereford to Gloucester.

Janet has gone to a lot of trouble to organise a superb range of social evenings – please support them – everyone is welcome!



Any queries, or ideas for speakers, to Janet on 01432 264366

HEREFORDSHIRE AND GLOUCESTERSHIRE CANAL TRUST

WORKING TOGETHER IN THE PRESENT, TO REVIVE THE PAST, AND SECURE A BETTER FUTURE

ANNUAL GENERAL MEETING 2001

to be held on Tuesday, 19th June, 2001
at The Verzons Country House Hotel, Trumpet,
near Ledbury, commencing at 7.30pm.

Annual Report and Accounts* for Year Ended 28th February 2001

*Apart from the formal business there will be
a lively mix of slides, overhead projections
and commentary on the successes of the year.*

Light refreshments will be available.

Members and friends will be made very welcome.

* Summary (abridged) Accounts will be included as a loose insert (for Members only). Members may obtain a full set of Accounts by sending a large SAE to the Treasurer; full sets of Accounts will also be freely available at the AGM.

Every Member who is entitled to vote at an AGM may appoint a proxy to vote in his/her stead. A proxy must be someone entitled to vote at the meeting. Proxy forms are available from Liz Connors. The forms must be completed, signed and returned to her so that they are received at least 48 hours prior to the commencement of the AGM.

We aim to allow ample time for general questions after the close of formal business. Prior notice of questions should ensure a comprehensive response and would be greatly appreciated.

AGENDA

1. Welcome and formal opening of the meeting.
2. Chairman's Report.
3. Group Reports.
4. To receive and approve the Report of Council, the Income and Expenditure Account and Balance Sheet of the Trust (and associated Company) for the year ended 28th February 2001, the Report of the Honorary Auditor thereon, and the Report of the Honorary Treasurer.
5. To appoint Auditors for the Trust (and associated Company).
6. To re-appoint those Council Members retiring by rotation who offer themselves for re-election:-
Liz Connors; Brian Fox; Nigel Jefferies
7. To note that the following co-opted Members of the CofM have been Nominated as Directors of the Canal Trust:-
Nigel Bailey; Dick Skeet; Brian Moulton; Heather Worth
8. Close of formal business.

Subject to time being available an illustrated review of progress will follow the formal business.

NOTE REGARDING AGENDA ITEM 6. One third of the Members of the Managing Council are required to stand down each year. All those standing down (listed at 6. above) are offering themselves for re-election unless stated otherwise. New volunteers to serve on the Council of Management are welcome; as reported on p.28 of the last edition of *The Wharfinger* formal Nominations (*on forms obtainable from the Treasurer*) have to be received between 22nd May and 12th June. The maximum size of the Council of Management is 18 and, unless new nominations bring the total in excess of this number, the above stated Members will be returned un-opposed. The Council of Management is also empowered to co-opt Members during the year (subject to the maximum size not being exceeded).

ANNUAL REPORT FOR YEAR ENDED 28th FEBRUARY, 2001

This is the ninth Annual Report of The Herefordshire and Gloucestershire Canal Trust Limited [a non profit distributing Company (formed in April 1992, No. 2704407), which is a Registered Charity {1010721} and of the wholly owned Trading Company - Herefordshire and Gloucestershire Canal (Sales) Ltd {2710215}]. They replaced the Herefordshire and Gloucestershire Canal Society which was launched in 1983.

The *Canal Trust* is indebted to its *Council of Management*, and to the *Trading Company Board*; during the period under review [*year ended 28th February 2001*] those listed on page 19 have been Members:-

CANAL TRUST COUNCIL OF MANAGEMENT (12 months to 28-2-01)

Nigel Bailey [c]; Tony Austin-Bailey; Liz Connors; Brian Fox;
Will Frecknall [IWA nominee]; Nigel Jefferies; Brian Moulton [c];
Dick Skeet [c]; Cliff Penny; David Penny; Heather Worth [c].

[c] = Co-opted during the year.

TRADING COMPANY [H&GC (Sales) Ltd.] (12 months to 28-2-01)

Tom Bennett; Liz Connors; Simon Dyer [c]; Derek Gray [r];
Ray & Barbara Moses; Brian & Janet Moulton; Joyce Potts;
Penny Shetliffe; Pat [c] & Dick Skeet; Derek Weaver.

[r] Resigned during the year. [c] Co-opted during the year.

Italics in the first list indicates not a Director; in the second not a Member of the Trading Company Board.

The Over site has dominated the 12 months under review. This was inevitable given the enormous amount of work that was required to finish Phase 1 by the deadline. What a marvellous achievement it was to complete these major civil engineering works, to such high standards, and bring water back into the Basin with 10 days to spare! For this to have been recorded for posterity as the closing sequence of the Carlton Television second series of WaterWorld was an added bonus.

Much space has been taken, quite rightly, in praising the partnership that made this all possible. It would be quite wrong, in this Annual Report, not to repeat our sincere thanks to everyone who has, in any way whatsoever, contributed to the undoubted national success of Over. Uppermost in our minds are the thousands of hours contributed by Waterway Recover Group volunteers, from all over the country. Without their concentrated efforts we would not have achieved our objective. However, if it had not been for our own volunteers (with both pen and spade) there would have been no Over Project in the first place; their vital roles in planning and co-ordinating the work - plus much physical effort working with WRG - should not be overlooked. Finally it would be remiss not to repeat our appreciation for the co-operation of Swan Hill Homes and their contractor CJL Construction - it is not every day that a developer has to share his construction site with a group of volunteers.

The support of our (ever expanding) Membership should also be acknowledged in this Report; whether 'just' as an armchair Member, by way of additional donations and sponsorship and/or helping with refreshments, fundraising and a myriad of tasks that all come together to ensure that the Herefordshire & Gloucestershire Canal Trust continues to succeed.

With Over so much in the spotlight it was good to see steady progress being maintained on the reconstruction - to the exacting requirements of the Forest of Dean District Council and English Heritage - of the Listed House Lock at Oxenhall and initial restoration work commencing on the adjacent section of the Canal that is owned by the H&G Canal Trust.

During the period under review our Trading Company attended more events than ever before. This is yet another example of the expansion of the activities undertaken by our hard working volunteers to support the physical restoration of the Canal. Our presence at such a range of venues - both local and national - not only helps raise funds but also awareness of the H&G Canal.

It is absolutely essential that we do not take for granted the (ever expanding) voluntary efforts without which the Canal Trust would cease to function. For every hour spent on physical restoration/reconstruction many more are spent 'behind the scenes' - to each and everyone our sincere thanks.

◆ CRP

THERE'S STILL PLENTY OF TIME TO SUPPORT OUR MAJOR FUND-RAISING INITIATIVE

The major restoration activities on the H&G Canal cost money! Please enter our Grand Holiday Draw.
YOU could win a superb holiday whilst supporting us!

Herefordshire & Gloucestershire Canal Trust - H&GC Sales

07250

GRAND HOLIDAY DRAW

1st PRIZE

NARROW BOAT HOLIDAY for 3-5 - ONE WEEK
April/May 2002 (excluding Bank Holidays). Donated by *Starline Narrowboats*

2nd PRIZE

ONE WEEK SELF CATERING HOLIDAY for 4
Private bungalow in quiet West Herefordshire village near Welsh Border
Spring/Summer 2002. Donated by *Mrs A. Wood*

3rd PRIZE

ONE NIGHT B&B for 2, at Garford Farm
A listed timber-framed farmhouse with comfortable en-suite bedrooms, in peaceful locality near Hereford
November 2001/May 2002, (excluding Bank holidays). Donated by *Mrs H Parker*

Printing sponsor -
power

Promoter: *Mrs E. Connors, 18 St. Ethelbert Close, Sutton St. Nicholas, Hereford, HR1 3BP*
Registered with Herefordshire Council under Section 5 Lotteries and Amusements Act 1976
Printed by: *Print Plus, 91/92 572005*

Tickets to be drawn at National Waterways Festival on 27/8/2001

TICKETS
25p each

Additional tickets are available from:-
our Treasurer
Liz Connors;
at the AGM;
or at the
monthly Social
Evenings.

MEMBERSHIP FORM

REV 04/00

NAME PLEASE

ADDRESS PRINT

Thank
you

POST CODE TEL NEW MEMBER ☐ RENEWAL ☐ GIFT ☐

Details, please, of any skills
that might assist us in our work?

GIFT AID: As a Registered Charity we can increase income from subscriptions, and any donations, by almost one third provided you pay tax - if you DON'T pay tax or DON'T want us to do this tick this box. ☐

Subscription rates :- INDIVIDUAL £ 7.50 ☐ JOINT/FAMILY £ 10 ☐

SENIOR CITIZEN £ 5 ☐ JOINT SEN'R CIT'N £ 7 ☐ CORPORATE £ 20 ☐

LIFE MEMBERSHIP :- INDIVIDUAL £ 150 ☐ JOINT/FAMILY £ 200 ☐

SENIOR CITIZEN £ 80 ☐ JOINT SEN'R CIT'N £ 110 ☐ CORPORATE £ 400 ☐

PLEASE help us to keep our Subscriptions low AND to
accelerate our restoration progress by making a DONATION £ TOTAL
payment £

BANKERS ORDER [* Please insert the amount of your Subscription + any voluntary donation. Thank you]

(Do not detach). To (name & address of your bank)

Please pay to account No. 11600694, sorting code No. 16-21-20 of The Herefordshire and Gloucestershire Canal Trust at the Royal Bank of Scotland, 21 Broad Street, Hereford, HR4 9AP

The sum of £ on this day and thereafter, *annually* (on the anniversary) until further notice.

SIGNED MY A/C No. DATE

[YOUR NAME AND ADDRESS
TO BE AS GIVEN ABOVE.] [This CANCELS any previous Bankers Order in favour of the Trust.]

CREDIT CARD MANDATE: If you would prefer to pay annually by credit card please tick this box. ☐

The Membership Secretary, H & G C T, 6 Castle Street, Hereford, HR1 2NL

OVER OPEN DAYS

The last Sunday in every month

10 am - 5 pm ON 24TH JUNE • 29TH JULY • 26TH AUGUST

An opportunity to have a guided tour of Over Basin, a trip on Mister Maysey, see the model boats and enjoy some home made refreshments. *All profits to the Canal Trust Funds.*

SATURDAY, JUNE 9TH

Cheese and Wine Party

Join us at Over, at 7.30pm, to enjoy a selection of locally grown wines and cordials and local cheeses – including the 1999 "Cheese of the Year". You'll be surprised at the variety on offer!

£5 per adult, £3 children.

All profits to the Canal Trust Funds.



The *essential* advance tickets for **The Cheese and Wine Party** and **BBQ** can be obtained from Liz Bailey by sending a cheque (& SAE please) payable to H&GCT to:- Liz Bailey, 30 Fieldfare, Abbeydale, Gloucester, GL4 4WF. or Telephone Liz on 01452 533 835 and pay by credit card.

SATURDAY, AUGUST 11TH

BBQ

Meet at 6.30pm at Over Basin

A repeat of our hugely successful BBQs from last year which will be preceded by a tour of the latest developments and outlining our future plans on the Over site.

£5 per adult, £3 children.

All profits to the Canal Trust Funds.

SUN, 30TH SEPTEMBER

First Anniversary Open Day

SUNDAY, 9TH DECEMBER

Boat trips to Santa's Grotto

SUNDAY, JUNE 24TH, 2.30 pm

Strawberry Fayre

An Open Day with the opportunity to not only see the latest progress on site (*with major work having taken place during June*), but also to sample the local strawberries in as many ways as we can think of! Free rides aboard Mister Maysey and other boating activities.



Car Parking at Over

IMPORTANT PLEASE!

The canal Trust Car Park has not yet been built for visitors to the Over site. Until it has been completed later this year, please do not park on the Over site (*disabled excepted*).

We have made arrangements with the nearby **Over Farm Market** (*thank you yet again Rob*) for our visitors to park there. Please park on the extremities of the car park, leaving plenty of room for customers to park closer to the shop. Your custom at the shop would also be appreciated!

Thank you.



RESTORATION

Update!

Brian Fox is a bit depressed as he writes his quarterly report for the Oxenhall site!

OXENHALL

Regular readers will recall that the Wrinklies have done very little work on the lock reconstruction since last October, this being down to ill health of some of us but mainly the bad weather which seems to descend on Oxenhall every Tuesday. Unfortunately, the news gets worse, as we have now been stopped completely from working on the lock because of the problems with Foot & Mouth. A footpath runs right through the site and it was the decision of our Council of Management that work should stop at Oxenhall, and also at Yarkhill, immediately the disease became prevalent in Herefordshire & Gloucestershire.

We have managed to keep the team together for a few weeks by employing them on tasks in our yard next to Horsefair Lane where we do not need to use the footpath. Our diesel tank now has a new base and brick chamber to catch any spillages as required by Health & Safety regulations. The space available for storage has been extended by construction of a sleeper retaining wall in addition to the new fence extension at the rear. Piles of bricks have been



◆ The 'rival' "castle" starts to take shape at Oxenhall. What next, a large canal basin?!

distributed tidily around the edges and plant has been parked in more convenient positions. But there is a limit to how much 'tidying up' you can do and we have now stopped completely and are considering offering our expert services to the Wednesday Gang at Over.

I also have to report an evening of mayhem at our newly extended compound at Oxenhall. A couple of the local yobbos recently broke in and proceeded on an orgy of mindless destruction to our equipment. Three dumpers and the tractor had their fuel pipes cut and they then managed to start the bulldozer owned by Tom Bennett, despite the battery being disconnected and having a cut out switch installed. They soon found out

how to operate the controls and our newly erected fence was next to suffer as they just drove straight through the concrete posts and flattened it. Then it was over the 'bailey' bridge and up the side of the canal towards Lock Cottage where our friend Nigel Freeman was resting quietly. Hearing the considerable noise of a bulldozer at full revs he went to investigate and succeeded in frightening the offenders off, leaving the machine undamaged. Goodness knows what damage they might have caused if they hadn't been stopped. *Thank you Nigel.* It is difficult to see how we can stop these breakins in future but at least if they try it again there are now no batteries left on the plant. ♦ BF

OVER

Through the Spring we seem to have achieved a great deal on the Over site. The slipway has been completely re-laid and now looks splendid. At the end of its longer wall we have created hardstanding to enable wheelchairs to gain safe and convenient access to the trip boat. It's made from a combination of brick and paving slabs which cost us ...nothing at all.

Although the slopes above the short and long wharf walls were looking beautifully grass-covered, we took the decision to dig trenches through the grass for ducting. These are necessary to carry services to the moorings for visiting boats. They won't actually be in use for some years but it seemed sensible to create all the disturbance now and then let the grass and trees mature in peace. Digging by hand proved to be very slow work so we hired a mini excavator for a day so

that Adrian Fry could complete the job.

With such a length of ducting it's important to have some access points, so half way along the short arm the Wednesday Crew have been building a "service box". Its real purpose is to allow access but it is cunningly disguised as a small brick structure with a sloping roof to display a plaque thanking all those who have sponsored mooring rings. Another will provide the same function on the long arm.

A good deal of time has been spent clearing the course of the Mill Race. For centuries the corn mill at Over took its water from the Leadon and the Mill Race ran between the Canal and the river. We will be restoring part of it around the back of the site as an overflow channel. This will help us to attract a more diverse range of wildlife to the site. Several trees needed felling so we worked under pressure to get the job completed before the start of the nesting season.

Not content with one site hut, we now have another, affectionately known as "the smart hut". Swan Hill Homes donated it (thank you). It then made a very complicated three hundred yard journey from a position trapped behind a row of almost-complete houses to its new location beside the mucky site hut. The journey was assisted by an enormous crane and at least three different lorries. The first two were from Midwinter Transport and then Ron Mogg (Joseph Rice Logistics) finally lifted it into place for us - so very many thanks to Ron Mogg and Hedley Midwinter.

The Wednesday Crew did some painting and temporary patching to make it waterproof, Maggie Jones and

Liz Bailey gave it a thorough clean inside (a process requiring shovels before brooms and cloths came into play!) so that we now have a smart temporary home for displays and refreshments on open days. Now we are into slightly drier weather we can paint it its final colours . . . what else could it be other than yellow and black?

The site entrance is now looking smarter too with the addition of an oak notice-board made for us by Dave Jones, using the design he's perfected with the notice-boards at Oxenhall, *see photo.* →

It enables us to promote the Trust to the many visitors to the show house who cannot get in to the site unless it's on one of our Open Days. The entrance will be further enhanced with some shrub planting to a design by Member Craig



Smith. Craig runs a landscape garden business at the same time as completing his qualifications at Pershore College. Occasionally, he manages to pop in to keep tabs on our horticultural efforts.

He has designed the woodland walks and planting which will eventually replace the piles of brick on the flood plain (honest) and has had a hand in recommending the specimen trees we've been planting. These include silver leaved lime, walnut, holme oak, oak, beech, whitebeam, horse chestnut, bird cherry, downy birch and a number of silver birches which will all help to fill in the rather "gappy" appearance of the mature trees on the site. Many of these trees were kindly donated by Martin Clark of Newent.

Because we work on site on three days each week, many of our volunteers don't actually know each



Volunteers at the Skittle Evening. *Left to right back:* Angela Wood, Joan Jones, Liz Bailey, Wilf Jones, Tim Norman, Maggie Jones, Mike Bowden, Sharon Bowden, Dave Hurren, Mike Hunt, Laura and Dave Mills. *Front:* John Wood, Lyndon Bowen, Roy Jamieson, Nigel Bailey.



Members of the Model Boats Club sail their crafts at the April Open Day at Over.

other. To put this situation right, we organised a skittles evening at the Swan at Staunton. There we had great fun, an excellent buffet and went some way to discovering the faces behind the names. Next time we ought to choose a game that John Wood is not going to win every time but that seems unlikely as John is organising the next event. We'll probably find he's an ace shove ha'penny player as well.

The 25th March was the first of our last-Sunday-in-the-month open days. One of our regular Sunday volunteers turned up unusually late and we realised why when he asked "When do the clocks go on?" The Gloucester and District Model Boat Club joined us that day so we had the odd experience of HMS Gloucester powering its way across the Basin. The boats are lovingly built, usually from kits, sometimes from scratch, and very impressive they are too. The club will be using the Basin again on several open days through the year.

Paul Brown has been liaising with npower who run a scheme to encourage their staff to help on a

variety of community projects. The format is that they give up a Saturday and the company allows them time off on a Friday to help a charity. We selected the building of the otter holt as a self-contained task that could be completed by a team of five in two days.

Dates were agreed, volunteers from npower's Personnel Department signed up, materials delivered, hotel booked, foundations excavated...and then the Leadon burst its banks flooding the otter holt site. The five young ladies, undeterred by the floods and the heavy rain, did work through the Friday on a substitute project, clearing undergrowth for the car park site. Maybe they'll be able to return later in the year to complete their original plan.

An unexpected phone call from Gloucester's Folk Museum resulted in a welcome gift. They are currently redesigning the garden and yard behind the museum and have no further need for some 150 blocks of stone which they had been given some years ago. The stone came from the

tramway that used to run along Albion Street in Gloucester - once part of the Gloucester-Cheltenham tramway. The stone is now safely stored on site and may well be used as copings for the restoration of the lock.

Another welcome gift were two diesel generators, donated by Member Jeffrey May. They are currently being brought back to working order by one of our Over volunteers, Jim Duck. Jim's normal weekend activity is canoeing but he is being prevented from doing this by the F&M precautions. Instead, he is indulging in his other passion of restoring engines!

The Over team has certainly grown. At one time, it consisted of a couple of people working on a Sunday. On the first Saturday in April we had an extraordinary level of activity:

- A team went off to Sharpness to collect the first donated diesel generator
- On site, a team met to plan the upcoming Easter Egg Challenge
- A team from the Boats Group were busy making improvements to Mister Maysey
- WRG delivered various items to us
- The regular Saturday volunteers were busy on site
- and if the otter holt had gone ahead as planned, the girls from npower would have completed the construction.

Not a typical day, but great to see so many people involved in so many different aspects of our Over project.

◆ NB

Young contestants take part in the Easter Egg Challenge organised by Sharon Bowden.



Members of the Boats Group: (left to right) Ray Moses, Brian Moul, Barbara Moses, Derek Weaver, Tom Bennet, Dick Skeet.



Plants please! As you have just read, Craig Smith, our local friendly landscape gardener, has come up with a planting scheme for the borders around Over Basin, combining a mixture of hardy perennials into 'wave shaped borders'. Last time we asked for plants we had a good response from **The Wharfinger** readers, *thank you*.

If you have some spare plants of those listed below, please contact Maggie Jones on 01452-618010.

Buxus Sempervirens (Box)
Geranium: X magnificum or
himalayense as Johnson's blue
Lavender Hidcote or similar dwarf blue
Alchemilla mollis
Echinops ritro 'Veitche's Blue'
Nepeta (Catmint)



THE TRADING COMPANY *H & G Canal Sales*

OUTINGS FOR 2001

We have a very full diary for the summer – apart from our "awaydays" listed in the last edition of **The Wharfinger**.

We hope that the following events will take place, but it will depend on the containment of the foot and mouth disease.

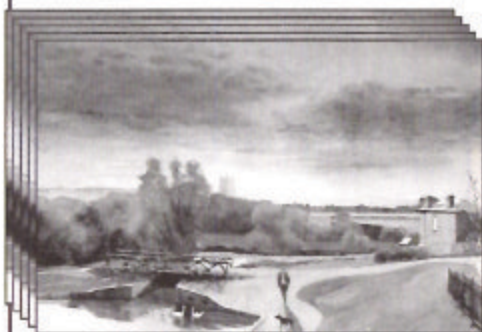
- JUN 2** Hartpury College Open Day
- JUN 17** Highnam Village Picnic
- JUN 17** Droitwich Canal Festival
- JUN 23/24** Hereford Society of Model Engineers – Broomy Hill event
- JUL 7/8** Saul Boat Gathering
- JUL 21/22** IWA Tewksbury
- JUL 28** Maylords Shopping Centre, Hereford
- AUG 18** Tibberton Flower Show
- SEP 8** Newent Onion Fair
- SEP 23** Oxenhall Open Day
- Nov 17** Our own Ledbury Craft Fair

If anyone would like to come and help, please contact Janet Moulton [01432 264 366]. If you cannot help do please come and visit the stand and see our new sales lines. Some sales items will also be available at the Over Open Days. ♦ **JM**

NEW from THE TRADING COMPANY

Last year, it will be remembered, we were very successful with our Christmas Cards and Coasters, which were based on a watercolour commissioned from Garth Allan. This year we have asked Garth to produce another watercolour. After the extremely high profile re-opening of Over Basin last September, where else would be the subject of his painting but Over Basin!

As before, we are offering the new product in three forms:–



- ① Letter cards – (blank) 65p each
- ② Coasters – £1.25 each (or £1.00 each for six or more).
- ③ Christmas Cards – 65p each or five for £3.00

If ordering for postal delivery, please add 10% or minimum £1.00

Penny Shetliffe will be pleased to receive your orders [01432 820 623]. ♦ **BM**

SEVERN VALLEY BOAT CENTRE

QUALITY BOAT BUILDERS SINCE 1974



Buying a boat is as simple as SVBC. Stop dreaming and start cruising. You are welcome to visit us and see boats at all stages of completion. Fully fitted, sailaway or shell – we can advise on design or build to your specification – our quotes will please you. Finance terms available. Part exchange considered.



On sit facilities include: Repairs and servicing, chandlery, brokerage (full list on request), Fletcher sports boats, Shetland cruisers, Yamaha outboards, cranage, moorings and storage, surveyor and B.S. examiner.

STOP PRESS: We have been appointed as main dealers for the **SHIRE** range of engines.

CANAL COLLECTION

SEVERN VALLEY BOAT CENTRE, BOAT SHOP, MART LANE,
STOURPORT-ON-SEVERN, WORCS. DY13 9ER.

TEL: 01299 871165 FAX: 01299 827211

E-MAIL: sales@severnboat.co.uk WEBSITE:
www.severnboat.co.uk

List of Over Sponsors to date

Mill Barn Cornerstones

Mrs P Anthony, Hereford
Major P D Mootham, Gloucester
Brian Catton, Gloucester
Brian Catton, Gloucester
Brian Catton, Gloucester
Brian Catton, Gloucester
Caroline Jones, Cinderford
Caroline Jones, Cinderford
Caroline Jones, Cinderford
Caroline Jones, Cinderford
Mr & Mrs D. M. Kirby, Worcester
W B Brown, Bath
W B Brown, Bath
W B Brown, Bath
W B Brown, Bath

Wharf mooring rings

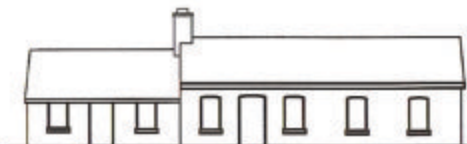
1 Mrs M Balderstone, Gloucester
2 Mr B Catton, Gloucester
3 Mrs M T Rose, Tibberton
4 Mr J C Holland, Hereford
5 Mr A C Greenwood, Northwich
6 Mr A P Goodland, Wimbourne
7 Mr A P Goodland, Wimbourne
8 Mr P G Sharpe, Rugeley
9 Mr J D Wall, Clarendon Road
10 Worc. & Birmingham Canal Society
11 Mr & Mrs D Beard, Tibberton
12 Dr J G M Mortimer, Yarpole
13 Mr A O'Boyle, Haw Bridge
14 Mr & Mrs W R Myers, Bartestree
15 Mr S T Sloan, Aylesbury
16 Mr R C White, Evesham
17 Mr R C White, Evesham
18 Mr & Mrs J Hopkinson, Corwen
19 Mr & Mrs M Quarrell, Bielefield
20 Mrs M Bennett, Staunton on Wye
21 Mrs M Bennett, Staunton on Wye
22 Victor and Ruth Newman
23 Mrs M F Muir, Hereford
24 Mr & Mrs R G Alexander, Basildon
25 Dr I McKim Thompson, Kingswinford
26 Mr N H Peabody, Madley
27 Mrs B Martin, Charlton Kings
28 Mr W B Brown, Bath

Feature wall benches

Mrs R Ballard, Colwall
Mr R J Moreland, Gloucester
Mrs M Carlile, Brookthorpe
Mr N H Peabody, Madley

Trees

Mr W Marsh, Bristol
Mr & Mrs D Gray, Hereford
Mr N H Peabody, Madley
Mrs R Parker, Brockworth
Nigel and Liz Bailey, Gloucester
Mrs P Anthony, Hereford



The Mill Barn

The foundations for the Mill Barn are planned to start very soon.

When the barn is complete it will be a very useful resource for the Trust, as it will provide rooms for meetings and accommodation for work teams to use whilst working on the restoration of the canal. It will include three main rooms, a kitchen, storage, toilets and plenty of shower facilities.

Much of the original stone and timber from the original barn has been carefully palletted and stored at Over since it was demolished to make way for the housing development.

There are many items still needed to complete its restoration. You can help us make the restoration a reality by sponsoring a cornerstone for £25. These Cotswold stones are larger than the rest of the stone that made up the original barn and a key feature of it – but not all of it survived. So far we have had 15 Cornerstones sponsored. Each sponsor's name will be recorded inside the building when completed.

If you would like to sponsor a cornerstone please send a cheque to our Treasurer, Liz Connors, 18 St. Nicholas, Hereford, HR1 3BF.

Please also enclose your full name and address (+ telephone number in case of queries) together with details of how you wish your donation to be recorded (*maximum 30 characters, please*).

Thank you for your support.

Unless you state that you are not a taxpayer, or that you do not wish us to do so, each donation will be accepted under the new gift Aid rules (see page 8 of **The Wharfinger** 67).

CANAL CRAFT

IF YOU WANT TO BUY A BOAT, OR SELL YOUR BOAT,

THEN CANAL CRAFT (BROKERAGE) LTD
the trusted leader in narrowboat sales
EXISTS TO HELP YOU

THE COMPANY IS STAFFED BY ENTHUSIASTS
WHO'S CANAL EXPERIENCE TOTALS OVER A HUNDRED YEARS.

IF YOU WISH TO BUY

WE ISSUE COMPREHENSIVE STOCK LISTS (USUALLY OVER SEVENTY BOATS)

NEWLY PRINTED EACH DAY

(or see our display ads in the leading waterway magazines)

BOAT PRICES RANGE FROM £7,000 TO £70,000

WE HANDLE RESIDENTIAL BOATS IN ALL AREAS

WE CAN SUPPLY FULLY FITTED OR PART FITTED NEW BOATS

OR ASSIST YOU IN A DESIGN AND BUILD PROJECT

WE ARE LICENCED CREDIT BROKERS AND ARRANGE INSURANCE FOR YOUR BOAT

WE ASSIST WITH MOORING LOCATION IF REQUIRED

FIRST TIME BUYERS GUIDE AVAILABLE FREE ON REQUEST

IF YOU WISH TO SELL

WE WILL MEET YOU AT YOUR BOAT

ANYWHERE ON THE CONNECTED SYSTEM.

WE PROVIDE A FREE ON THE SPOT VALUATION

BUT THERE IS NO OBLIGATION TO USE OUR SERVICE.

WHY NOT CALL US AND FIND OUT WHY WE ARE-

THE TRUSTED LEADER IN NARROWBOAT SALES.

phone 01604 832883/832889

fax 01604 832885

or E-MAIL us!

ask for RICHARD, ALISON, HELEN, OR DAVID

Canal Craft (Brokerage) Ltd., Cornhill Lane, Bugbrooke, Northants NN7 3QB

Phone (01604) 832889 Fax (01604) 832885

Visit our new Internet site:- www.canalcraft.co.uk



When Over volunteer, Roy Jamieson isn't steering the boat or laying bricks, he picks up a paint brush and paints our Over site!

Here is his latest water colour of Mister Maysey at the slipway. As well as water colours he produces some traditional canal paintings.



Dr Robin Andrews (left) and the Mayor unveil a plaque on Widemarsh Canal Bridge, Hereford, in 1984.

DR. ROBIN ANDREWS

A man of diverse interests, including canal restoration.

It is with sadness that we report the death, on 9th March 2001, of Robin Andrews, aged 53.

Robin was instrumental in forming the original Herefordshire & Gloucestershire Canal Society, when he wrote to the Hereford Times, on the 11th July, 1980. His seminal letter stated, "With the current upsurge in industrial archaeology, now may be a timely moment to reassess the future of the remnants of the old Hereford and Gloucester Canal." As a result of his letter a small number of people coalesced, who were interested in his idea. Early meetings were held at The Antelope public

house in Barton Road, Hereford.

In September 1982 a Steering Committee was established, with a view to forming a society to take an interest in the former canal. We decided to launch the society at a public meeting, which was held in April, 1983 at the Red Cross Hall in Blackfriar's Street, Hereford. One hundred and fifty people attended the meeting and Robin became our first elected Chairman.

Throughout the years Robin retained his interest; only last year he attended and participated in a social event at The Verzhons. People who live beyond Hereford may not know that he was a respected General Practitioner and (together with his wife) a Councillor on the resurrected Herefordshire Council.

His death followed a protracted battle against cancer, which was borne with admirable fortitude, humour and grace. In a personal valediction, which spoke volumes about the man, he recorded he was happy with what he was doing and that he gained a tremendous kick out of it. He concluded: "And who could ask for more from life than that?"

◆ NJ

the Main Mast and is usually the tallest of the masts, unless two or more masts are of the same overall height. The third mast is called the Mizzen Mast. If there are more than three masts the fourth mast is called the Jigger Mast and a fifth mast was called the Pusher Mast on a five masted Barque.

Most sailing vessels had three masts and if they had yards across the width of the vessel with square sails on all three masts, were then called Ships. If they had yards across the width of the vessel and square sails on the first two masts, and only had fore and aft sails on the last mast, then they were called Barques. Once a vessel had three masts or more, if there were square sails on all masts it was a Ship but most vessels had only fore and aft sails on the last mast so they were Barques. Many of the latest and

largest fast sailing vessels were Four Masted Barques or Ships and there were a smaller number of Five Masted Barques or Ships.

Over long voyages in both light and strong winds they may not have been as fast as the smaller Tea Clippers but with the right wind they could overtake most steam cargo vessels and there are several instances of them racing and overtaking some faster passenger carrying steamers.

I thought you would like an answer to the mizzen topgallant staysail question. I have worked aloft on two square rigged vessels, although not in rough weather, on the courses on the masts and the lower and upper topsails on the top masts. I have been up to the second platform on the top of the top mast but not worked on the topgallant sails. They are a long way up (and a long way down)! ♦ KJJ

GRIFFITHS MARSHALL

*Chartered Accountants
Registered Auditors*

FOR QUALITY BUSINESS ADVICE

- | | |
|--|---|
| <input checked="" type="checkbox"/> Free Initial Meeting | <input checked="" type="checkbox"/> Auditing |
| <input checked="" type="checkbox"/> Tax Planning Advice | <input checked="" type="checkbox"/> Annual Accounts |
| <input checked="" type="checkbox"/> Budgets & Forecasts | <input checked="" type="checkbox"/> Computer Expertise |
| <input checked="" type="checkbox"/> Positive Business Advice | <input checked="" type="checkbox"/> Management Accounting |
| including Start-ups, Cash Flow | <input checked="" type="checkbox"/> Corporate Troubleshooting |

Computer Contractor Specialist
Self Assessment Assistance

Tel: (01452) 520000 Fax: (01452) 309316

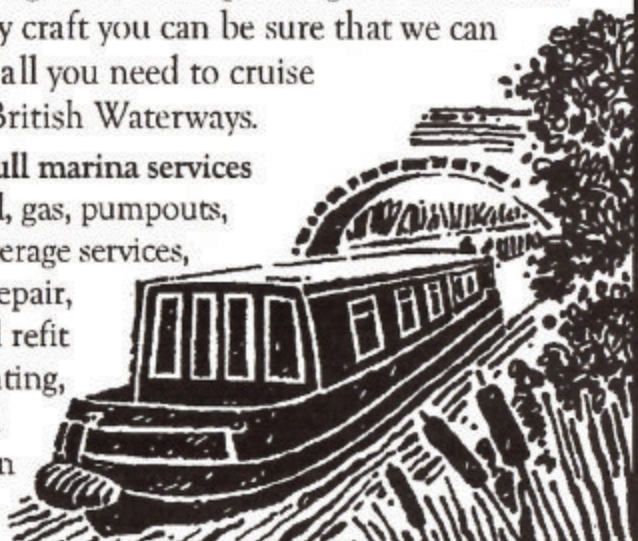
e-mail: info@geeyem.co.uk

Beaumont House, 172 Southgate Street, Gloucester, GL1 2EZ

Buying a Boat..? Booking a Holiday..? Own a Boat..?

Whether you are looking to **buy** a narrow boat, **hire** one for a holiday or you **already own one**, you need look no further than **Alvechurch**. With over 25 years experience in hand building boats and operating the UK's finest fleet of holiday craft you can be sure that we can help you with all you need to cruise on the Great British Waterways.

We also offer **full marina services** including diesel, gas, pumpouts, moorings, brokerage services, boats for sale, repair, breakdown and refit work, boat painting, signwriting and RYA Helmsman Training.



www.alvechurch.com

Tel: 0121 445 2909 Fax: 0121 447 7120

Email: enquiries@alvechurch.com

Alvechurch Boat Centres Ltd, Scarfield Wharf, Alvechurch, Worcs, B48 7SQ

◆ Not Quite ... THE LAST PAGE ◆

Generators

Our plea for "a small generator for occasional use on site" in the last edition resulted in the prompt offer of not one, not two, but four generators! Whilst all needed some tender loving care we have the volunteers who thrive on administering this – indeed, at the time of writing one is fully up and running and another two are well on the way.

Our sincere thanks to Jeffrey May from Sharpness (for two!), John Jones of Hereford, and Ron Mogg of Gorsley for their generous donations.

Small gas 'Fridge'

The same page sought a "small gas refrigerator" for our catering team at Over. We thought that this too had been located when a long-standing Member 'phoned to offer his surplus 'fridge from their camper van. When a second 'phone call was made to arrange collection his wife answered the 'phone and pointed out that, unfortunately, they had sold the camper van a year earlier!

So we are still looking for a small gas 'fridge please – Nigel Bailey would be pleased to discuss (01452 533 835).

Petrol Fly-mower

Continuing the plea for needed items we are also looking for a petrol-driven fly mower for the Over site. With the grass growing at a pace right now we need something for the steep banks around the Basin. If you have one either in working order or in need of some attention, that you no longer require, we would be pleased to hear from you. Contact:

Maggie Jones
01452-618010



WATERWORLD VIDEO

As you know the H&G Canal Trust featured in each of the six episodes of the second series of WaterWorld. Many of our Members and supporters live outside the Central TV area and others missed all or part of it. Carlton Television has confirmed that a video of the whole of the second series will be available "in the autumn"; our Trading Company will have copies for sale later in the year.

WATERWAYS WORLD

The national magazine Waterways World is running a series of articles on different inland waterways where active restoration is under way. The May issue carried the first of two consecutive articles on the H&G Canal – the first to span two editions (it wouldn't fit into one!).

◆ CRP

AGM

Tuesday 19th June is a date for your diary. Please support the AGM, commencing at 7.30pm, at the Verzons Country House Hotel (there's a map of how to get there on the Social Events page). As we've stressed before we do our utmost to make the evening as interesting as possible – including our Treasurer Liz Connors presenting her almost legendary illustrated accounts! The latest plans relating to our proposed work at Over will be on display.


COPY DEADLINE
FOR THE NEXT
ISSUE IS:

JUNE 30TH, 2001



*At the heart
of England's waterways*

Braunston Marina are
proud to support
the restoration of the
Herefordshire & Gloucestershire
Canal

Working *together*, in the present, to revive the
past, and secure a better future. 

Braunston Marina,
The Wharf, Braunston, Nr Daventry,
Northamptonshire, NN11 7JH
Telephone: 01788 891373
Fax: 01788 891436

CONTACTS

Liz Connors

18, St Ethelbert Close,
SUTTON ST. NICHOLAS
Hereford, HR1 3BF
Tel/Fax: (01432) 880 155
email: Liz@Harbinger4.freemove.co.uk

Cliff Penny/David Penny

"Coppice", BURLEY GATE,
Hereford, HR1 3QS
Tel: (01432) 820 420
Fax: (01432) 820 877
email: cliff.penny@cwcom.net

Brian Fox

1, Holmer Cottages, Roman Road,
HEREFORD, HR4 9QU
Tel: (01432) 358628

Janet & Brian Moulton

18, Coningsby Court,
Coningsby Street,
HEREFORD, HR1 2DF
Tel: (01432) 264 366

Nigel Jefferies

Tel: (01432) 850 661

Will Frecknall

Tel: (01989) 769 309

Paul Brown

Tel: (01386) 443 826

Nigel Bailey

Tel: (01432) 533 835
email: n.bailey@virgin.net

Dick Skeet

Tel: (01432) 797 032

Maggie Jones

Tel: (01432) 618 010
maggiehome@btinternet.com

Penny Shetcliffe

MAIL ORDER SALES, Little Lugg,
Cross Keys, Hereford, HR1 3NP
Tel: (01432) 820 623

H & G Canal (Sales) Ltd. is the Trust's wholly
owned Trading Company [No. 2710215].

Registered office: - 3 Norfolk Court,
Norfolk Road, Richmansworth, WD3 1LT.

Printed by Print Plus, Widemarsh Street,
Hereford, HR4 9HN (01432) 272 025

visit our Website ...

www.h-g-canal.org.uk

Want to help? ...

The Canal Trust is always in need of new volunteers as our activities continue to expand. We can normally find a use for any skill from chefs to first aiders, brickies to those willing to help with a shovel or pen.

◀ **Contact any of these names TODAY!**

UK SUBSCRIPTION RATES

ANNUAL MEMBERSHIP			
Individual	£7.50	Joint/Family	£10
Senior Citizen	£5	Joint Senior Citizen	£7
Corporate	£20		
LIFE MEMBERSHIP			
Individual	£150	Joint/Family	£200
Senior Citizen	£80	Joint Senior Citizen	£110
Corporate	£400		

PLEASE NOTE: All subscriptions and donations are treated as being made under the Gift Aid scheme unless you state that you do not wish us to do this. Payment made by Standing Order greatly assists us and payment remains under your control. **All payments to: 6, Castle Street, Hereford, HR1 2NL please, thank you.**

ADVERTISING IN The Wharfinger

Show the support of your business by advertising in **The Wharfinger**. Rates start at £12, there is a series discount and we will gladly design your advertisement free of charge. Heather Worth, Tel. 01432 270 552, has the details.

Unless specifically stated any opinions expressed in this newsletter are those of the author and do not necessarily reflect the formal policy of the Herefordshire and Gloucestershire Canal Trust. The Trust accepts no liability for any matter printed in this newsletter nor any advertising that may be included. Reproduction of extracts from the newsletter is welcomed provided that full acknowledgement is given.

Membership records are computerised. In accordance with the Data Protection Act 1984 [License No. A3089046], your entry is available for inspection if you send a SAE to the Membership Secretary.

Whilst we try to ensure dates are correct please verify them with a relevant Organiser.
©2001 Published by the Herefordshire and Gloucestershire Canal Trust.

The Herefordshire and Gloucestershire Canal Trust is a non-profit distributing Company limited by guarantee [No. 2704407], and is a registered as a charity [No. 1010721].

The Wharfinger

The Herefordshire and Gloucestershire Canal

Work started in 1792 but was not completed until 1845, making this the last major route built in Britain, but for the navigations of Birmingham and the Manchester Ship Canal. The canal stretched for 34 miles from the River Severn at Gloucester, via Newent, Dymock and Ledbury to the city of Hereford, utilising some 22 locks and 3 tunnels. the Canal was formally closed in 1881 to allow construction of the Ledbury to Gloucester railway and in its turn was closed by Dr Beeching in 1964.

The Canal Society was formed in 1983 and replaced in 1992 by Herefordshire and Gloucestershire Canal Trust, a registered charity. The Trust has an ordinary and corporate membership exceeding 900 from all over the country – and abroad! Our objective is to fully restore the 34 mile Canal, from its connection with the 2,500 mile inland waterway network at Gloucester to the centre of Hereford. A steering Committee of Local Authorities, Environment Agency, etc. has been formed by the Trust to assist in progressing this objective. We have a major restoration site in each county, which together extend to some 3 miles.

