

The *Wharfinger*

Spring 2012

Magazine of the Herefordshire and Gloucestershire Canal Trust

111
EDITION

£1

free to members



WORKING TOGETHER IN THE PRESENT TO REVIVE THE PAST AND SECURE A BETTER FUTURE

HEREFORDSHIRE & GLOUCESTERSHIRE CANAL TRUST

Working together in the present to revive
the past and secure a better future.®

Vice Presidents:

R. E. Barnes TD.
Richard Graham MP
James Hervey-
Bathurst CBE
Duff Hart-Davis
Mark Harper MP
Sir John Lushington BT
Jesse Norman MP
Diana Organ
Tim Parker
Bill Wiggin MP

Council of Management:

Chairman: *(to be appointed)*

Vice Chairmen:
Ralph Barber
Wilf Jones

Committee:
Liz Connors
Brian Fox
Nigel Jefferies
Caroline Jones
Maggie Jones
Janet Mould
Cliff Penny
David Penny

Finance:

Treasurer/Chairman:

Liz Connors

Committee:
Brian Fox
Paul Henshaw
Chris High
David Penny

Those in Italics are not Directors.

Herefordshire

Aylestone Site

Site Leader:

(to be appointed)

Lengthsman:
Judith Jacobs

Yarkhill Site

Leader: Chris High

Gloucestershire

Llanthony Site

Leader:

Paul Henshaw

Over Site

Site Leaders:

Ted Beagles *(Wed)*
Maggie Jones *(Sat)*

Over Committee:

Ted Beagles
Chris Byrne
Maggie Jones
David Penny
Belinda Sprigg

Vineyard Hill Site

Project Chairman:

Wilf Jones

Site Leader:

Ted Beagles

Oxenhall Site

Leaders: Brian Fox

Geoff Hopper

Lengthsman:

Peter Moore

Who does what?

Moat Farm

Project Chairman:

Wilf Jones

Site Leader:

Martyn Tilford

Health & safety

Tony Austin-Bailey

Wilf Jones

Planning and project development

Commercial & Technical

Director: David Penny

Legal Services

Rosamund Rutter

Planning Liaison

Wally Thrush

Engineering

Will Frecknall

Publicity

Press Liaison:

The Wharf House

Website Development:

Team Leader:

Maggie Jones

Web Master:

Nick Dymott

Ted Beagles

Liz Connors

Colin Dymott

Caroline Jones

Archive:

Digital Photos:

Colin Dymott

Press Clippings/Non-

Digital Records:

vacant

Membership services

Secretary:

Nigel Jefferies

Gift Aid:

Liz Connors

Social Events:

Janet Mould

Restoration Fund

Secretary:

Peter Lawrence

Talks and walks

Co-ordinator

Nigel Jefferies

Support to Council of Management

Minutes and Admin:

Ralph Barber

National IWA

nominated member:

Caroline Jones

IWA Branch Liaison:

Maggie Jones

The Wharfinger

Editor:

Cliff Penny

Design/Production:

Maggie Jones of

Maple Graphics

Advertising:

The Wharf House

Postmasters:

Janet Mould

M Gray

B Moses

Honorary posts

Archaeologist:

Ron Shoesmith

THE TRADING COMPANY
H & G Canal Sales

DONATING ALL
PROFITS TO THE
CANAL TRUST

Chairman: Janet Mould. **Treasurer/com Rep/ Co.**

Secretary: Liz Connors

Mail order sales/ Sales goods: Janet Mould

Bazaar: Pot Street

Committee: Barbara Moses, Roy Moses, Derek Weaver,
Penny Shetliffe, Heather Worth.

THE WHARF
HOUSE

DONATING ALL
PROFITS TO THE
CANAL TRUST

Over
Gloucester
GL2 8DB

Waterside Restaurant, Tea Rooms, Visitor Centre, Superior B&B.
Telephone 01452 33 2 900 www.thewharfhouse.co.uk

Company Secretary: Liz Connors.

Commercial Director: David Penny. **Legal Services:** Roz Rutter.

Website: Natasha Turney. **Accounts:** Ellen Genders.

Contents

page

3	Chairman's Column
5	Editorial – Positive Thinking
6	Llanthony Hydro, Flood Relief and new Lock Scheme launched
10	New Site: Moat Farm
12	Llanthony Lock
14	Vineyard Hill
16	Over Update
20	Social Evenings at The Royal Oak
21	Trading Company Outings 2012
22	Formal Notice 2012 Annual General Meeting
23	Grand Holiday Draw 2012
24	Work at Yarkhill
26	Restoration at Oxenhall
28	It's not all hard work!



Front Cover: Llanthony Weir by Ted Beagles

29	Model Boat Club at Over
30	Calling all H&G photographers
30	Honorary Life Membership
31	News from the Friends of Gloucester Waterways Museum
31	IWA Branch Meetings
32	Winter Bazaar Report
33	The WRGies are coming ... again!
34	The need for the Land Fund
37	Working with Nature
38	Restoration Fund Update
39	Not Quite the Last Page

THE WIDEST RANGE OF GARDEN MACHINERY IN THE COUNTY BEST PRICES FOR MILES

SALES • SERVICE • SPARE PARTS



MOWERS • TILLERS
SHREDDERS • BRUSHCUTTERS
HEDGETRIMMERS
BLOWERS • POLE PRUNERS
CHAINSAWS



RON SMITH & CO LTD

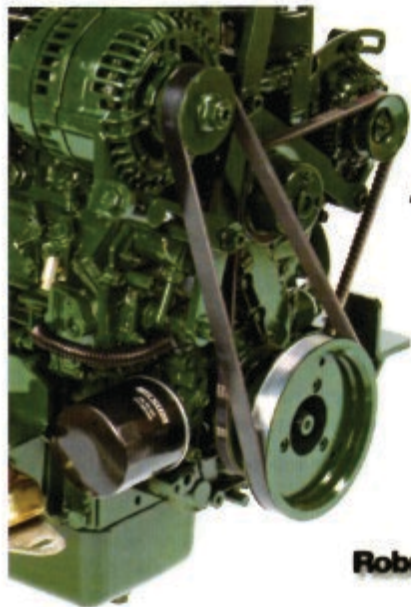
ESTABLISHED OVER 40 YEARS



4 NEWTOWN ROAD
WORCESTER WR5 1HF
01905 738 800

www.ronsmithandco.co.uk

168 WIDEMARSH ST
HEREFORD HR4 9HN
01432 343 433



BETA MARINE

28 - 90hp Marine Engines

Robust Reliability from our world beating engines!

Smooth low speed running as standard with our heavy flywheel

Two alternators are standard - high output when cruising

230 Volts option for your washing machine, microwave, etc

Excellent technical support and service with a 3 year warranty



www.betamarine.co.uk

Green Line

Tel: 01452 723492

Email: sales@betamarine.co.uk



Chairman's Column from Janet Moulton



*Looking back over five and half years as H&G Canal Trust Chairman one would expect to find highs and lows, but it has proved to be mainly highs. **Some of these highs are very visible, others are memories.***

We celebrated the 25th anniversary of the H&G CT with a sell-out film show at **The Courtyard** in Hereford (I would like to repeat this) and a dinner at **THE WHARF HOUSE**. We arranged minibus tours along the route to introduce members to their canal and fed them at Dymock Village Hall and **THE WHARF HOUSE**. The visible reminders are the milestones at Over, Oxenhall and Yarkhill – *how many more will we put in place in the next few years?*

One of the most nerve-wracking events was signing a large cheque for the purchase of Llanthony Lock and Cottages. The timing of the magnificent legacy from Miss Beth Gadesden was incredible. We are extremely grateful to her family for considering the H&G CT when distributing her charitable bequests and especially for agreeing to our specific request to use it to facilitate this very important acquisition.

Seeing boats on the partly restored Canal in Hereford using the new slipway at Aylestone Park was the vision of things to come – *and the boats are ready!* Alder, Renton and Bosley joined Mr Maisey in Over Basin and I look forward to seeing them all painted in H&G colours as soon as weather permits. The extension into Vineyard Hill will give them some good practice runs.

The opening of **THE WHARF HOUSE** bedrooms, after so many years of hard work by the volunteers (and overcoming a number of setbacks) has been rewarded with awards from highly regarded organisations.

On a personal note I have represented the H&G CT at national meetings and local events and have welcomed a number of new Vice-Presidents who are important and enthusiastic supporters of our plans to fully restore the Canal between Gloucester and Hereford.

Whilst I may no longer be Chairman of the Trust I shall remain as Chairman of the Trading Company and look forward to continuing to attend events with the display and sales stand. The Social Evenings programme is in hand so I will continue to meet many of you at **The Royal Oak** and I shall also continue to distribute **The Wharfinger**.

Finally a very big thank you to all who have supported me and to the many friends I have made (sadly a number no longer with us) over the last few years. **Best wishes to all involved in the future progress of the Herefordshire and Gloucestershire Canal.**

♦ Janet Moulton, Chairman

MIDWINTER TRANSPORT

ESTABLISHED 25 YEARS

With a full range of vehicles including

- flat curtain sided and refrigerated ■
- from half tonne Escort to 38 tonne artic ■
- Hiab crane vehicle ■ Nationwide ■



TOTALLY COMMITTED TO DELIVER

Newent 01531 820276

Fax: 01531 822247

Strawberry Hill, Newent, GL18 1LH

www.midwintertransport.co.uk

email: midwintertransport@yahoo.co.uk



Positive Thinking

*A number of readers remarked that the last Edition of **The Wharfinger** was very 'upbeat' and that the editorial "**Springing into 2012!**" reflected this. As can be seen as you read through this edition my anticipation was well founded with much good news to report.*

There is no doubt whatsoever that at times positive news seems thin on the ground in the world. However, in these difficult times, our recent achievements in setting the firm foundations for future successes have taken a significant leap forward with new sites being reported in three consecutive editions of **The Wharfinger**.

True to H&G CT's reputation for both positive and lateral thinking we were quick to grasp an opportunity when Waterways Minister, Richard Benyon MP, visited Gloucester in December to introduce the new Canal and River Trust charity that will take over from British Waterways. Thanks to our newest Vice President, Gloucester MP Richard Graham, the agenda for the Minister's meeting was swiftly amended to also include the launch of our proposed **Llanthony Hydro, Flood Relief and new Lock Scheme** – which is reported in detail on pages 6 to 9. The following two pages introduce another new restoration site at Moat Farm, Malswick, the legal aspects of both being handled by our own team at THE WHARF HOUSE.

We have always said give us the land and we will find ways to restore the Canal. This is why the specific Land Fund was launched in Autumn last year – further details are on pages 34 and 35. If you have not already done so we do hope you will be

willing to donate either a lump sum or a more modest monthly contribution, together they all add up to very worthwhile sums.

Both the new Vineyard Hill site and that at Malswick are being run on a new team approach with a Project Chairman (Wilf Jones in respect of these two) and a Site Leader (Ted Beagles at Vineyard Hill and Martyn Tilford for Malswick).

It is very easy to be swept along with the renewed enthusiasm that new restoration sites and major project announcements bring – *everything else continues too!* We have a long list of shows and events where our team will be spreading (very positively!) the word about our voluntary efforts and achievements – why not join them – you will be made very welcome. This is hugely important to us, as are all the 'behind the scenes' activities that continue, from finance through membership with many more essential to enable the H&G CT to function effectively.

Thank You Janet!

At the last AGM Janet Moul: gave six months notice of her intended retirement as Chairman of the H&G CT *The Council of Management has been unanimous in thanking Janet for all her hard work.* Janet must take the record in respect of the number of formal posts and other tasks that she has held whilst Chairman. The penultimate paragraph on her page makes it clear that her 'retirement' is only partial and will still leave plenty of H&G CT involvement! ***Our sincere thanks, Janet.***

Llanthony Hydro, Flood Relief and new Lock Scheme launched

By David and Cliff Penny

One of the many projects being developed behind the scenes at **THE WHARF HOUSE** has been just how we progress the Llanthony Lock site given that the work here will be both complex and very costly. It is not simply a question of restoring the original lock and re-excavating the approach channels!

It is known that in the latter years of operation the lock was the source of increasing concern regarding its structural stability and that the tidal flows caused major operational problems due to siltation. In evaluation of our options we need to find the best solution for the requirements of gaining access to the H&G Canal (which, of course, was not the prime objective of Llanthony Lock) and to take into account both the capital and long-term operational costs of the chosen solution. *As with everything that we promote some 'lateral thinking' was called for!*

Whilst most of our projects are not made public until all the detail has been thoroughly researched and agreed the situation at Llanthony is such that we were reaching a stage where we needed to promote the concept, and develop a partnership, to take what is a complex solution forward as an exciting major project. We have been working on this



David Penny (left), with Nick Worthington (centre) regional Manager for British Waterways and Richard Graham (right), MP for Gloucester at the presentation in December introduced by Richard Benyon MP, the Waterways Minister.

behind the scenes at **THE WHARF HOUSE** prior to buying the Llanthony site 3 years ago.

In the last edition of **The Wharfinger** we were pleased to announce that Richard Graham, the MP for Gloucester, had become one of our Vice Presidents. In agreeing to take on the role he made it clear that he was very keen to assist the H&G CT whenever there was an opportunity to promote and pursue the restoration of the Canal. *At that point he already had an opportunity arising from a proposed Ministerial visit to Gloucester!*

So in mid December Richard Benyon MP, the Waterways Minister, addressed an invited audience at Gloucester Docks. Those attending included senior representatives at Director level from both

Gloucestershire and Herefordshire County Councils, British Waterways, the Environment Agency, and other key parties. Having briefly introduced the proposed Canal & River Trust that will take over British Waterways role in England and Wales later this year, the Minister

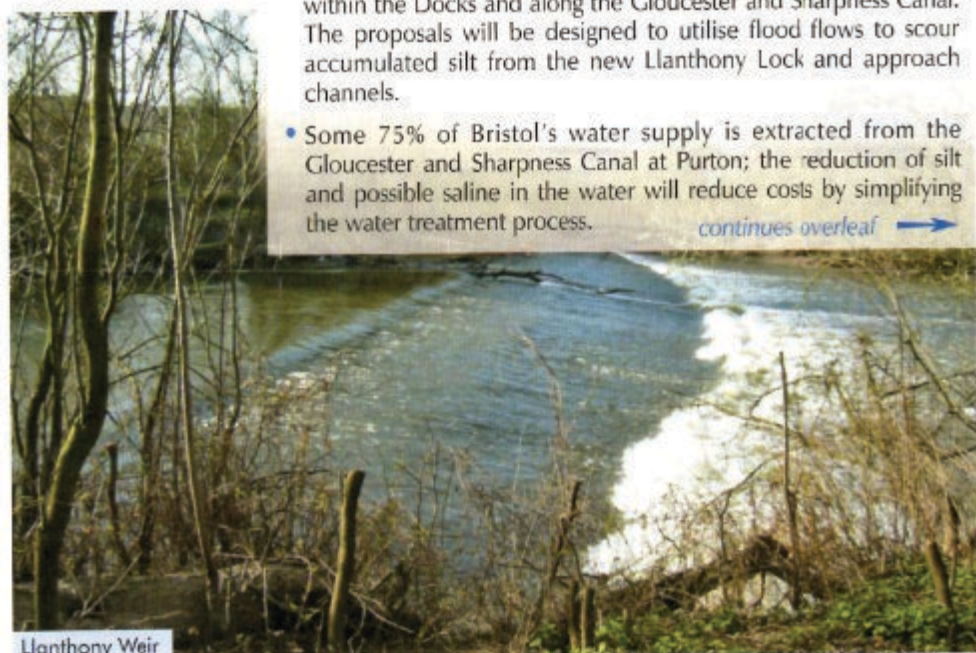
handed over to David Penny – the only other speaker. David gave an illustrated presentation on behalf of the H&G CT launching the H&G CT's imaginative £7million Llanthony Hydro-Electric, Flood Relief and new Lock Scheme to the assembled audience.

The proposals include

A 'win win' solution for many interested parties, not just the H&G CT!

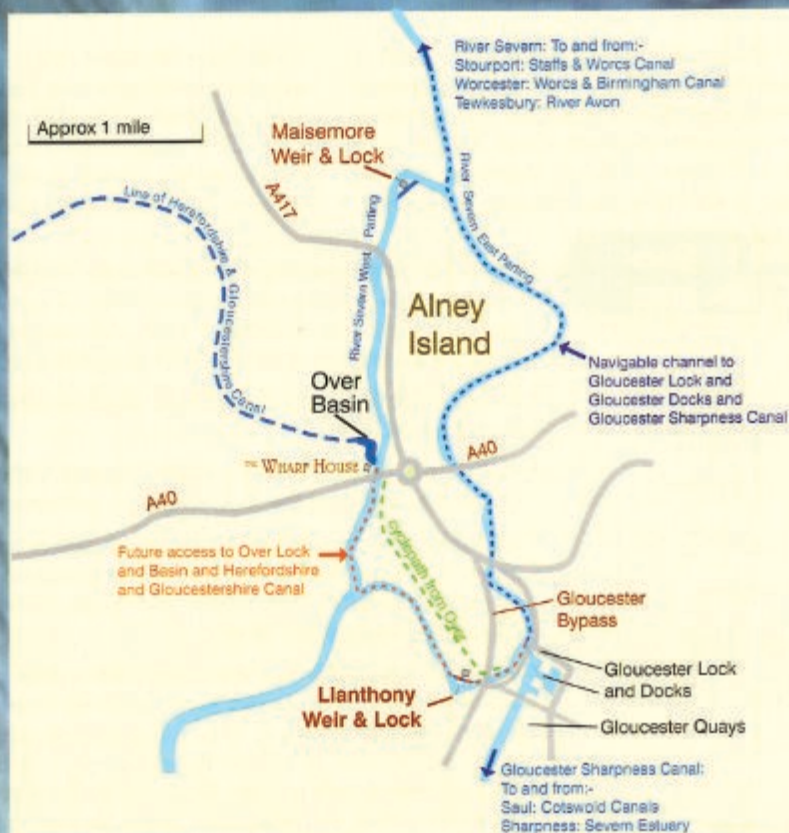
- Hydro-electricity generation that will make maximum advantage of the tidal River Severn thus funding H&G CT's costs in operating and manning the new Llanthony Lock and meeting the long-term energy requirements of the H&G CT along the Canal.
- A new modern lock at Llanthony to facilitate safe access to and from the H&G Canal.
- Radial gates on the new lock which, together with the approach channels to and from the lock, will act as a flood relief channel.
- Inflatable weirs (incorporating new fish passes) at both Maisemore and Llanthony that will significantly improve control and management of the River Severn and greatly benefit this area of Gloucester during major floods.
- Improved navigation in the Eastern Parting (the only access to and from Gloucester Docks from the River Severn) whilst also minimising tidal intrusion. This will greatly reduce the silt load in the Eastern Parting and on the pumps into Gloucester Docks. This will dramatically reduce silting of both the River channel and within the Docks and along the Gloucester and Sharpness Canal. The proposals will be designed to utilise flood flows to scour accumulated silt from the new Llanthony Lock and approach channels.
- Some 75% of Bristol's water supply is extracted from the Gloucester and Sharpness Canal at Purton; the reduction of silt and possible saline in the water will reduce costs by simplifying the water treatment process.

continues overleaf ➔



Llanthony Weir

Photo: Ted Boughey



So what's next?

We already have initial feasibility studies to prove it works.

We have already secured what is estimated to be 50% of the costs of Specialist Consultants Reports.

We have a partnership with Funding Officers from both Gloucestershire and Herefordshire Council already working together with us to deliver both the balance of the funding and to secure the essential (and many!) next stages.

We have Specialist Consultants preliminarily briefed ready to start on design and secure all the necessary Consents.

We have frequent and supportive meetings with senior British Waterways staff (at what is a very busy time for them regarding the transition to the new charity).

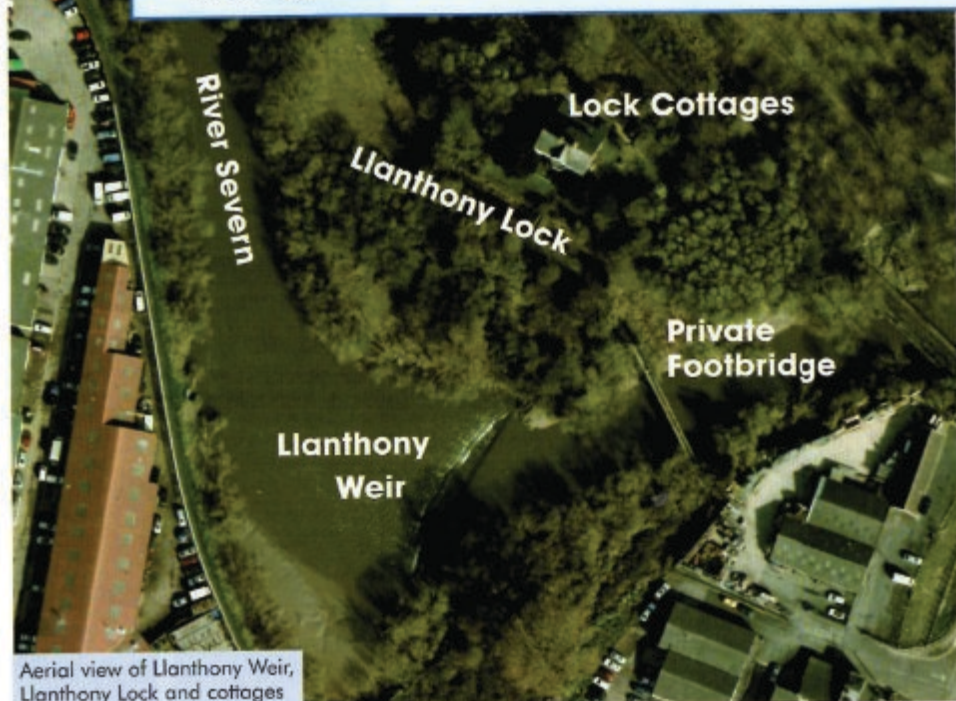
We have the support of key bodies such as the Gloucester Harbour Trustees and Internal Drainage Board.

We will be focusing on the continued essential liaison with the Environment Agency and other important bodies, during the next preparatory stages.



After the presentation Richard Graham told reporters *"This is the most exciting environmental project Gloucester has seen for a long time. It's an opportunity to generate significant green revenue from hydro electricity for the Herefordshire & Gloucestershire Canal Trust's work, improve the quality of water brought from the river to the Docks, construct a new Llanthony Lock connecting the Herefordshire & Gloucestershire Canal with the River Severn and Gloucester Docks, and to provide flood relief. What a vision, what prospects – and what enthusiasm in the high level audience from the public, private and voluntary sectors who heard the presentation. David has done a great job carrying everyone with the idea: now we must run with that momentum and keep everyone together as the Trust digs into the detail. All of us in the City are excited."*

Nick Worthington, from British Waterways, added: *"Clearly, the potential here is huge."*



Aerial view of Llanthony Weir, Llanthony Lock and cottages

Photo: Geopixpictures

This is both a major and an exciting project for the H&G CT (*the largest – so far!*) with the potential to be a 'win-win' situation for all concerned. It has to be appreciated that it is still in the formative stages with many hurdles yet to cross. It will take several years to develop and design the proposals to reach the stage where the necessary consents can be obtained.

◆ **DRP and CRP**

New Site: **Moat Farm**

By Martin Tilford

Malswick

*Martyn Tilford, a volunteer at the Llanthony site, was asked if he would like to be the leader of a new site at Malswick, with Wilf Jones as Project Chairman. He agreed – and immediately found out that the official tasks also included writing for **The Wharfinger**!*

On a cold and frosty day Wilf Jones, Ted Beagles and myself visited a new site of approx 600yds (550 metres) at Moat Farm, Malswick (which is between Gloucester and Newent). This means that work can soon commence to restore another length of the H&G canal.

Negotiations by Wilf Jones and Ted Beagles concluded in January and this will allow a limited amount of ground clearance before the start of the bird nesting season, with further tree surgery/scrub clearance in the Autumn.

The summer months will see a small team repair fences, erect working party access gate(s), remove old fencing and posts and survey the site to establish the work required, in liaison with the owners, for next winter. During this time a full



Above: Martyn Tilford (left), Hilary and Paul Reneke (centre) handing the signed documents to Wilf Jones, (right).

Below: Images of the site waiting to be tackled.



Photos: Ted Beagles

Plan of the new site at **Malswick**



Private
Drive

Plan: Maggie Jones

PLEASE NOTE:

Public access is unavailable at present but the Trust is working on proposals to develop this.

programme of work will be developed for 2013/14 to enable H&G CT volunteers to use their skills and time to restore the canal.

This small site is another important piece in the jigsaw! Negotiations continue on other sites to provide a long term progression of work for our ever expanding numbers of volunteers.

Initial work is planned to commence as this edition goes to press and an update will appear in the next edition of **The Wharfinger**.

♦ MT

*Would you like to be involved? You will be made most welcome, please contact either
Martyn Tilford on 01452 790 358 or
Wilf Jones 01452 413 888.*



LLANTHONY LOCK

By Paul Henshaw



The water supply to the cottages at Llanthony is piped across the girder footbridge from the mains on the Gloucester side of the river Severn. Over the years both the box across the bridge holding the pipe, and the insulation, had deteriorated badly with the result that they offered no protection at all from the elements.

One of our priorities was to construct a new set of boxes across the footbridge and replace the insulation to reduce the risk of pipes freezing during frosty weather. The whole operation was carried out from the floor of the footbridge without cutting off the water supply to the cottages. Hand tools had to be secured with a lanyard, as retrieval from the river below would have proved somewhat tricky! In the event none were lost. Oh and we didn't lose any volunteers either. We counted them all out and we counted them all back!

Left: The water pipe with new insulation placed in position.

Below left: Measuring up for the new box.

Below: aligning the new pipe box.

Right: The new box – almost complete.



Work has been proceeding well in cottage No 1. The lounge has been redecorated following our fitting the new floor (that I reported on last time) and a new hot water cistern and immersion heater has also been installed.

To further demonstrate the assortment of volunteers' skills, Alan McBride has been using the harvested willow reed from the osier bed to make edging hurdles for the garden. These will also be offered for sale during our September Open weekend.

Following the exciting announcement of the proposed hydro and lock project at Llanthony (see page 6) we will be concentrating on a programme of selectively clearing the river banks in preparation for the new scheme.



Above: Willow edging hurdle on the purpose built former.

Below: A completed hurdle.



Guess what they are doing?



Photos: Alan McBride

Would you like to join our team at Llanthony?
Please call **Paul Henshaw** on **01684 292997**

Some jobs require teamwork
- 1 working while 3 others offer helpful suggestions!

RHEILFFORDD
TALYLLYN
RAILWAY

Take an historic steam train journey for:
Scenic Walks & Waterfalls
Free Museum Playground
Licensed Cafe Gift Shop
Drive Experiences

Steam Through
Unspoilt Snowdonia



20% off
adult travel tickets
- not valid on
special trains.

www.talyllyn.co.uk/ad 01564 710472 Gorsaf Wharf Station, Tywyn, Gwynedd. LL36 9EY

VINEYARD HILL *Over*

By Ted Beagles



Thanks to the enthusiasm of the Volunteer team, and the good weather throughout the autumn, we have continued to make excellent progress.



Top: Log clearance from Vineyard Hill.

Above: Bob and Pat celebrate the completion of the scrub clearance.

Below: The scrub is burnt.

Bob and Pat finally finished the last bit of scrub clearance, at the far end of the site, on 11 November; well ahead of the estimated date!

At about the same time we had a team of professional tree surgeons on site to carefully remove low hanging and unsafe dead branches from the large ash trees on the rear of the towpath bank. Only one very rotten ash tree required felling, which was on the new line of the canal. All the significant tree stumps have also been removed from the canal bed and

towpath bank; this was a good opportunity to put our "new" tirfor hand winch to use, but eventually the job was taken over and completed by Paul with his excavator.

All this activity has naturally produced lots of brush and logs to be sorted out, with many bonfires to dispose of the smaller stuff. All the useful wood for logs has been removed to the main Over Site for eventual sale.





PLEASE NOTE: *There will be no public access to the Vineyard Hill section until the work is complete.*



Top left: Tree surgeon in action.

Above: The tirfor is put to work.



Paul operating his excavator.



The top soil is stripped back ready for excavation.

Whilst the clearance work was going on Mike has been busy surveying the site to define the new line, and the winding hole position, and to estimate the amount of material required to complete the construction work. Initial indications are that it may not be possible to fit in a full 70ft winding hole within the current area of the site. However the amount of material to be excavated is very close to the amount needed to build the new banks (subject to suitability for that purpose). Trial pits along the line all show that there is plenty of clay to provide a good lining.

The arrival of Paul's excavator on site has enabled us to press ahead with the project even more, and we are currently stripping back the top soil in preparation for major excavation work in April. We may even be in a position to do some early replanting of saplings on the rear of the existing area of towpath bank this winter.

We have established regular contact with the Vineyard Trust and are working together with them to complete the project on time, with minimal disturbance to residents, the local wildlife and any livestock in the field.

◆ TB

*Do you want to get involved? Please contact **Ted Beagles** on 01452 522 648*

Photos: Ted Beagles



During a lull in the work on Vineyard Hill we have been able to spend more time on our adjacent Over site recently and catch up on a few things. A major task is tidying the contents of the site containers so that we can access the contents much more easily and they can function in their proper role as our essential site storage.

Work has also started on the engine and drive system of our compact tug boat Bosley, under the direction of Andy Fowler. This is an unusual boat, not only for its appearance, but also because it has a hydraulic drive to the propeller. All of the water and oil etc. has been removed from the hull, and the decking and superstructure made watertight to keep the rain out. The engine has been disconnected from the drive system and all reasonable checks are being made before we finally make an attempt to start it. Then it will be on to check out the hydraulic system. Meanwhile John has been busy overhauling the concrete mixer, ready for the several items of construction work on our jobs list.

The site entrance has been greatly improved by Bob Reid who has been busy sorting out the area between the 'bailey' bridge and Severn Trent's sewage pumping station. The fence around the lock excavation has been extended down towards the riverside, complete with a barrier, to limit access to and from site by pedestrians and



Area around the bailey bridge has been improved.



Lock fencing extension with pedestrian access.

the riverside path. Further along the new riverside path, whilst clearing brambles and improving this path through to "Wilf's Way", Pat March was most surprised to come across a large grass snake. She carefully relocated this to a new home nearby, a little further from the path.

The commemorative milestone has not been stolen! It has been temporarily removed and stored in a safe place so that it is not in the way, or damaged, during the work at Vineyard Hill. It will be relocated to a more appropriate position, later in the year, when our work in the area is complete. **TB**



Milestone is temporarily removed.

The Wharf House

Before Christmas, one of our two immersion tanks in the boiler room started to leak which was spotted early enough before any damage occurred. Before ordering a replacement we are currently looking at repairing the tank ourselves, if possible, as we are able to run on one tank for a short time during this mild winter.

Work has continued in the fit-out of our final bedroom in **THE WHARF HOUSE**. The external door has been replaced, with one that was kindly donated by one of the local residents, as the original door had become slightly rotten at the base. We have also redesigned the flooring in the bedroom and bathroom to reduce costs. The floor in the bedroom will now be a wooden parquet floor (similar to that in the Restaurant and Visitor Centre) with a tiled floor in the bathroom, which we are currently about to purchase and lay.

eBay Sales

Our eBay sales have been progressing steadily recently and we have now exceeded £2,000 in sales of various items that are no longer needed around our site and items donated to us for sale. If anybody has anything they wish to donate to us to sell, or items not needed on our other restoration sites, please feel free to contact me (chrisbyrne@yaho.co.uk)

or **THE WHARF HOUSE**.

The Heritage Fleet

A few of our Saturday volunteers have been continuing to restore our 'heritage fleet' of boats. Focusing firstly on Renton, they have designed, prepared and painted the cabin in H&G CT 'house colours' which we will continue throughout our boats that we have here at present and any craft that we may acquire in the future.

Before the winter weather conditions had arrived we prepared Renton, placing boards and a waterproof sheet across her to prevent rainwater from entering the hold. In the Spring we will install the new automatic bilge pumps that we have recently purchased. Further painting of our boats (and signwriting) will continue as soon as suitable, settled, weather conditions arrive!

Renton painted in H&G CT 'house colours'.



Want to get involved at Over then please ring:-

Ted Beagles 01452 522 648

Maggie Jones 01452 618 010

THE WHARF HOUSE

RESTORED CANAL BASIN • RIVERSIDE WALKS • TAPAS ON THE TERRACE



AFTERNOON TEAS • RESTAURANT WITH ROOMS • FINE WINES



OVER • GLOUCESTER • GL2 8DB
01452 33 2 900
www.thewharfhouse.co.uk



Restaurant

Turn off the A40 at traffic lights 250 yards west of Over Roundabout (junction of A40/A417). GR SO 816197
All profits from The Wharf House will be used for the promotion and restoration of the Hereford and Gloucester Canal.



HEREFORDSHIRE'S LEADING BREWERY

Brewing beer in the traditional way



The pint to refresh Canal Volunteers!


Wye Valley Brewery
Herefordshire
www.wyevalleybrewery.co.uk



New Signage

At the entrance to Over Basin and ^{THE} WHARF HOUSE some smart new signs have been erected. They are in our golden yellow and black house style.

Some visitors to Over do not see the car park until they have driven past the entrance, so we are hoping that the new sign in front of ^{THE} WHARF HOUSE will help them to turn right there.

We plan to roll out similar signage on all of our key sites along the line of the H&G Canal both to unify our sites and to clearly identify the Herefordshire & Gloucestershire Canal Trust.  **CB**



Photos: Chris Byrne

Festival

Canal

Beer, Cider and Perry Festival

Saturday 1st – Sunday 2nd September 2012

This year we have decided to concentrate all our efforts into one Autumn Festival. This will allow us to focus on completing the work at Vineyard Hill, that will double the length of Canal at Over and make a much better event for visitors to enjoy. There will be a grand opening of Vineyard Hill with a procession of our heritage boats. More details in the next edition of **The Wharfinger**.

We hope to see you there!

Social Evenings at The Royal Oak

Please support our monthly meetings, make a note on the calendar and tell your friends and neighbours; we have an excellent venue and interesting speakers on a wide range of topics. Why not share transport and make an evening of it – **everyone is welcome!**

The third Tuesday of every month (except December) at The Royal Oak, Much Marcle 7.30 for 8pm start.



March 20th

Chris Witts: *Disasters on the Severn*

We welcome Chris back to tell us of another aspect of the mighty River Severn.

April 17th

Tim Boddington: *Dutch Waterways*

We go across the Channel for another look at European waterways.

May 15th

Roger Leishman: *Wendover Arm*

A look at progress on another restoration project.

June 19th

Andrew Charman: *The Welshpool and Llanfair Railway*

For this year's railway talk we go over the border to hear about one of the many steam railways in Wales.

July 17th

Annual General Meeting

(starts 7.30 prompt) – includes illustrated reports from our restoration sites.

JANUARY MEETING REPORT

A PHOTOGRAPHER ON THE CANALS

with Robin Smithett

David Walshaw reports on the first meeting of 2012.

The good attendance at the first of our social meetings in 2012 was treated to an enjoyable and informative talk and slide show by our member, photographer Robin Smithett.

Robin's excellent slides showed a wide variety of canal scenes, including both the Caledonian and Crinan canals in Scotland.

Robin had many useful tips on how to improve one's photographs by attention to the height from which the photo is taken; choosing the right vantage point; taking note of the sky – is it interesting or not; considering the foreground and thinking about the lighting of the subject. As Robin said, with digital photography you can afford to take several shots from varied positions in order to achieve the best result. ◀ DW

Possible outings for the Trading Company in 2012.

The Trading Company hopes to attend the following events to promote the H&G Canal, our voluntary work and to raise funds.

Some are subject to confirmation. Please put dates in your diaries and any offers of help will be gratefully received.

March 24 – 25	Oxenhall Daffodil Walks
June 2 – 5	Crick Boat Show, Northamptonshire
June 2 – 4	Stroud on Water
June 2 – 3	Dymock Parish Jubilee event
June 9 – 10	Hellens Garden Festival
June 23 – 24	Braunston Historic Boat Rally
July 14	Historical Hereford Day
July 14	Sutton Fete
July 15	Pershore Waterways Festival
August 5	Herefordshire Country Fair
September 1	Alfrick Village Show
September 8	Gloucester Lock 200
November 10	Winter Bazaar, Ledbury

Would
you like to
HELP
an event ?

Any other suggestions – especially for small local shows would be very welcome.

Why not have a good day out with the H&G CT? We cannot promise that you will see the world with us but you may visit an area that is new to you – and we always do our utmost to ensure that you have some time to look around (and your admission to the event will be free!).

We urgently need additional volunteers to help us at these interesting events. Our well established small team will welcome you and you will have a choice of tasks from which to choose. Please contact Janet Moulton (see inside back cover for Contact details) to discuss where and when **you** can get involved.

Thank you.  JM



Braunston Historic Boat Rally – one of our regular events.



Formal Notice

2012 ANNUAL GENERAL MEETING

TO BE HELD ON TUESDAY 17TH JULY, 2012
AT THE ROYAL OAK, MUCH MARCLE, AT 7.30PM.

This is the formal notice of the 2012 AGM in order to give Members the opportunity to make a note in their diary; this year the AGM will be held on Tuesday 17th July. The Agenda and Annual Report will be in the next edition of **The Wharfinger**.

In accordance with the H&G CT's Articles and Memorandum of Association those Members of the Council of Management who are retiring on rotation but offering themselves for re-election do not require to be formally nominated to serve an additional term. However, new nominations

to serve on the Council of Management are welcomed and have to be made in writing, in a prescribed form. Nomination forms are available from Liz Connors [see Contacts on inside back cover] to whom they should be returned to arrive not less than 7 days nor more than 28 days prior to the AGM.

Every Member who is entitled to vote at an AGM may appoint a proxy to vote in his/her stead. A proxy must be someone entitled to vote at the Meeting. Proxy forms are also available from Liz Connors and must be completed, signed and returned to her at least 48 hours prior to the commencement of the AGM. **Thank you.**

stationery • leaflets • mailers • posters • folders • programmes • newsletters • brochures • prospectuses • calendars • magazines • books • exhibition panels

PRINT PLUS

01432 272025



126 Widemarsh Street • Hereford HR4 9HN
Fax: 01432 353962 • Email: enquiries@printplushereford.co.uk
www.printplushereford.co.uk

always delivering quality



As reported in the last edition of **The Wharfinger**, the Grand Holiday Draw 2011 was a huge success raising **£2,746**, some £500 in excess of our previous GHD record! Let's make this year as good!

GRAND HOLIDAY DRAW 2012

H&GC Sales Grand Holiday Draw
(Stubs and money to be returned
to Promoter by 9th September, 2012)
(No cash sent in 2011)

Friends and
colleagues will
be eager for
a great holiday
for just £1!

Printing sponsored by: **Bulmers**

HEREFORDSHIRE & GLOUCESTERSHIRE CANAL TRUST - H&GC SALES GRAND HOLIDAY DRAW 2012

1ST PRIZE **NARROW BOAT HOLIDAY for FOUR**
Donated by Black Prince Holidays
ONE WEEK PRIOR TO 31/5/13 Excluding Bank Holidays.

2ND PRIZE **ONE DAY'S BOAT HIRE** on either the Kennet
and Avon or Mon and Breck Canal. To be taken prior to 31/5/13 -
excluding Bank Holidays. Donated by UK Boat Hire.

3RD PRIZE **ONE NIGHT DINNER, BED & BREAKFAST**
for TWO at THE WHARF HOUSE, Over, Gloucester.

Promoter: Mrs E. Connors, 16 St. Elizabeth Close, Sutton St. Nicholas, Hereford, HR1 3SF
Prizes to be drawn at the September Social at Royal Oak, Much Marcle
on September 18th 2012. Registered under the Gambling Act 2005.

TICKETS £1 each

Once again this year we have some great prizes!

Again this year, due to popular request, we have sent you two books of tickets to sell to family and friends. More books can be sent to you if required - please contact Janet Moulton - (see inside back cover).

We are very pleased to report that the printing of the tickets once again is sponsored by **Bulmers** - thank you.

This year the prizes are to be drawn at the Social Evening at The Royal Oak, Much Marcle, on 18th September 2012. Our grateful thanks to **Black Prince Holidays**, **UK Boat Hire** and **THE WHARF HOUSE** for donating

the Holiday prizes - so every pound raised is a pound towards restoration of the Canal.

We appreciate that some recipients are not prepared to buy or sell draw tickets - we apologise but we do not have the resources to be selective in who receives tickets. *There is no obligation to return unsold tickets.* In order to save costs we have not included tickets in copies of **The Wharfinger** sent to Councillors, Local Authorities etc. If you wish to support us please contact Janet Moulton on 01432 264 366 and she will be delighted to send you some tickets.

Thank you.



**A&D Marine
Services Ltd**

COVERED DRY DOCK FACILITIES
REPAIRS AND REFITS TO ALL TYPES OF CRAFT
WELL STOCKED CHANDLERY
OUTBOARD MOTORS SALES AND SERVICING

HEMPSTED DRY DOCK,
338 BRISTOL ROAD,
GLOUCESTER GL2 5DH

Telephone: (01452) 415430
Fax: (01452) 307674
www.admarineservices.co.uk

Work at YARKHILL

By Chris High

Recent work started with the "big burn" of rubbish accumulated over the summer. This is not an easy work option as Stella, Richard and Paul Stanford, the main activists, found out by the end of the day!



Above: The 'big burn' gets underway.

Left: ... and is completed successfully.



A new trench was dug above the lock with the intention of locating the position of the lock walls. Plans and archaeology seldom come together and although it is possible to identify these, the fact that we came down onto a rough mortared surface, believed to be the mixing area for the lock and cottage build, could label the interpretation as fanciful. Maintenance continued and a final push with log and wood sales boosted Yarkhill's income (and exhausted our wood stock for this season).

The removal of a large stump from the wildside bank took considerable effort from our excavator Sam and



Left: A new lock trench is dug.



Above: A large tree stump removed from the wildside.



Above: Stumps removed from the culvert portal wing walls.



Left: Shuttered and cleaned canal culvert hole.

the fitter members of the team. It still has to be removed from the canal bed where it now resides. Further stump work involved the removal of two stumps that were growing in and on the wildside culvert portal wall.

Water, or the lack of it is still very apparent and exceptional for this time of year. Our main source flows through from the Monkhide section which in itself exhibits very low levels and even the culvert under the main A4103 road is dry.

Further preparation work prior to the repair of the culvert, which runs under the canal, was carried out. The repairing of the stonework by John Kilpatrick, supported by a mixing team, is now well underway. The adjacent lower bed level was dug out until a firm base was reached then re-puddled making sure

of a good bond with the surrounding bed and bank.

Finally the Yarkhill Team was joined by the Oxenhall Team on the Dymock Walk (see page 28) and for an excellent pub meal at the Beauchamp Arms to celebrate completion of our 6th year of work at Yarkhill.

Why not come and join the work and have some fun too?

**Would you like to help us achieve even more? – then please contact :
Chris High 01568 615 575**

Restoration at OXENHALL By Brian Fox

The large hole in the top of the aqueduct arch is no more. It was duly repaired, mainly by Ian, utilising mortar mixed by John and using the mix which we have used successfully in the past on the lock.

After allowing a couple of weeks for it all to harden the former was dismantled before the winter rains cause the Ell Brook to rise. All we need to do now is tidy up some of the joints with more mortar. This will not be as easy as it sounds as we shall be working from underneath the arch and working above our heads; definitely a job for the warmer weather! A few tons of soil and rubble have been compacted in the space above the new repair and we have since been able to concentrate our efforts on the winter maintenance programme.

The old willow mentioned in the last edition has now been felled. Bernard put his chain saw skills to good use and managed to topple it somewhere near where he intended. It has now been logged and removed by our neighbour Mr. Heath for use in his stove. The remaining stump was seen to be quite rotten and the tree would almost certainly have fallen of its own accord if we hadn't tackled it.

Work on tidying the woodland down towards the old Newent station is continuing and we were reminded, once again, of the fly tipping and general disposal of rubbish going on in this area. The old builder's hut which we 'rescued' last year was the most obvious item and (as reported last time) has now been put to good use. Most of the stuff is just an eyesore and it is the H&G CT's responsibility to keep this area tidy under the leasing agreement we have with Gloucestershire County Council. A day was spent repairing a trodden down fence and disposing of all the rubbish. A chance meeting with a gentleman from the Environment Agency, who approved of our efforts, resulted in 2 new signs which are now displayed on the fence



Above: The old willow to be felled.
Left: The rotten stump of the old willow.
Below: 'No Tipping' sign.





Above: The pound below the lock after its makeover.
Right: The varied contents of the Geocache.

informing everyone of a ban on fly tipping and of a fine of up to £50,000 for offending. However, within a month of the sign being put in place, an old fridge had been dumped right next to the sign!

The pound below the lock has been given a makeover and is now a good example of how a restored canal should look. There are no reeds growing on this section as the water is too deep but the margins have been trimmed and should now look good when the new growth comes in the Spring. Hidden amongst the bushes in the boundary hedge we found 4 plum trees which must have grown from roots of an old tree which used to be on the edge of the pound before it was dredged some years ago. The plan is to try to relocate a couple to a more suitable location where they can thrive.

While sorting through a pile of stones recently we came across a small bag with a

plastic container inside holding a selection of small trinkets. Amongst it all was a card stating that this was a Geocache. For those who haven't come across the term it is basically a modern version of a treasure hunt but instead of having clues to solve the hiding place is found by using GPS coordinates and a suitable piece of technology such as a modern mobile phone. It was started about 10 years ago in America but has only really taken off in the last 5 years and now there are apparently over 1.5 million sites spread around the world. If anyone wants to know more then go to www.geocaching.com. Our Oxenhall Geocache has now been returned to its space under a stone and gives you another reason to walk this delightful length of restored canal.

◀ BF



Nigel Jefferies is currently researching a circular walk in the area which we hope will be the subject of another of his highly successful H&G CT Walks leaflets soon.

– Ed

Would you like to join our team at Oxenhall? Please call **Brian Fox** on **01432 358628**

Canal Walks

Photos: Ralph Ward



It's not all hard work!

Robin Nicol, one of our regular volunteers at Yarkhill, reports on an invigorating day out ...

On 13th December 22 volunteers from the Yarkhill and Oxenhall sites combined forces for our annual walk. This year it was to be H&G CT Walk No3, Dymock. The weather forecast was poor – a biting cold wind with rain expected about midday – but an early start secured better weather.

By 12.30pm an enjoyable walk had been successfully completed and everyone was ensconced in the Beauchamp Arms ready to sit down to a good lunch!

◀ RN

Above: On top of one of the Oxenhall Tunnel construction shaft spoil heaps on the south side of the M50.
Below: Briefing some of the walkers – note the sun!



MORE Guided Walks

The H&G CT Canal Walk leaflets are proving popular with members and supporters who would like an interesting guided walk that includes part of the route of our Canal.

- CANAL WALK NO. 1 **STAPLOW**
- CANAL WALK NO. 2 **WITHINGTON**
- CANAL WALK NO. 3 **DYMOCK**
- CANAL WALK NO. 4 **LLANTHONY**



The leaflets are available from ^{THE} WHARF HOUSE or by post from Nigel Jefferies (address inside back cover). Please send your name, address and a loose second class stamp for each leaflet plus another loose stamp for return postage.

Next leaflet in the series will be around **OXENHALL**. Details will be in The Wharfinger.





MODEL BOAT CLUB at Over By Ted Tedaldi

The Gloucester & District Model Boat Club has enjoyed good sailing this winter, unlike the last two, only one day of frozen water so far.



Our winter 'Beans on Toast Sailing Day' saw 28 members and 34 model boats use the water. Various competitions, yacht racing, obstacle course manoeuvres and 'the speed king of Over' made for a good day with our lady members winning two of the competitions. King of Over was the fastest model from the water inlet to the finish line outside the hut. All this, accompanied by continuous tea, cake and beans on toast!

The canal is more used to narrowboats and several club members have now constructed various models. The latest is a one twelfth scale steam model, 72" long and 7" beam, the building of which has been inspired by the classic steam narrowboat 'President'. The hull is a fibreglass mould, the rest is the modellers own craft. The tarpaulin cover is from a nylon bed sheet painted with black emulsion, it's a good job it has not been a cold winter.

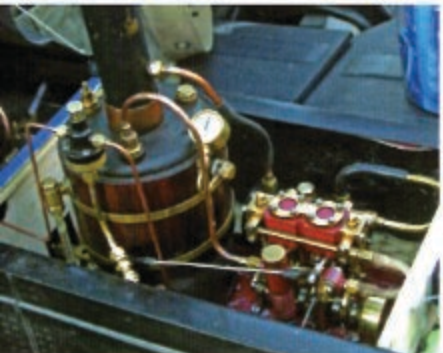
The model of the steersman was obtained from a local charity shop and it looks like one of our members. Several club members have also purchased this figure and are trying to dress it to authentically represent the living person!

Unfortunately the steam plant is not British, but French. Two British manufacturers, Stuart Turner and Cheddar Models have been bought up and

production frozen and another, SVS no longer exists. The

Anton steam plant is gas fired, the boiler capacity around 45 minutes steaming, but with side tanks this capacity is doubled. The engine is twin cylinder, working pressure 3 bar producing a power of 3.1cc. This drives a large three bladed brass propeller 60mm diameter. As the photographs show this is a splendid model.

Photos show details of the model boat inspired by the classic steam narrowboat 'President'.



Photos: Ted Tedaldi

♦ TT


Calling all H&G photographers!

We hope that Members and supporters are pleased with their H&G CT Desk Calendars and Christmas cards? Producing the calendar was a new venture for the Trust and so its popularity was untried and untested. So I am glad to say that on the run-up to Christmas we needed to go back to the printers for a second printing!

Our thanks go to the contributors to our 2012 Calendar and Christmas Cards listed opposite.

We would also like to thank all other contributors whose photos didn't make it into this year's Calendar. We hope that Members and supporters will continue to walk our towpaths with their cameras at the ready for those photo opportunities. We will need a further 13 shots showing the seasons, nature and canal activities for our 2013 Calendar.

So next time you are walking or working on the Canal please remember your camera.

Thank you  MJ

... once again!



The Wharf House at Over
Basin by James Fryer

Snowy scene at Yarkhill by Chris High

Frosty teasels at Over Lock by Chris Byrne

Snowdrops at Oxenhall by John Chappell

Cygnets at Oxenhall by Brian Fox

Fun at Aylestone Park by Colin Dymott

Llanthony Lock by Alan McBride

Water lillies at Over by Ted Beagles

A walk on the wildside at Yarkhill by
Elisabeth Walker

Rosehips along the towpath at Oxenhall
by John Chappell

Model boats at Over by Ted Tedaldi

A frosty Monksbury Court by Caroline
Morris

Bullrushes in the snow at Over by Chris
Byrne

Honorary Life Membership

At the January Council of Management meeting it was proposed and unanimously agreed that **Tony Austin-Bailey** be made an honorary Life Member of the H&G CT following his recent retirement from the CoM.

Tony has the record of being the second longest serving member of the CoM (and the Committee of the former Canal Society) having first joined the original Committee in 1985. He immediately took on the role of Vice Chairman and subsequently served a term of office as Chairman. Throughout the 26 years Tony has taken on many roles including health and safety and administrative and minute taking tasks – *which everyone else tries to avoid!* In addition he has been actively involved in physical restoration and at promotional/sales events to name but two!

Whilst Tony is no longer a member of the CoM he has made it clear that he still intends to remain active and to continue with health and safety site visits and this has been welcomed.



Tony Austin Bailey at the National Waterways Festival 2009 at Ratcliffe-on-Soar.

The honorary Life Membership is a joint one to acknowledge the support of his wife June throughout the extended period that Tony has been so involved in H&G CT activities.

Thank you Tony – all of your voluntary efforts over the years have not been taken for granted.

 CRP

News from the friends of Gloucester **W** **WATERWAYS** **M** **MUSEUM**

By Chris Witts

Following our successful Heritage Lottery Funding bid for £44,300, Europe's oldest steam dredger, SND No 4, sits safely in the large dry-dock at Gloucester Shipyard. She will remain in the dry-dock for three months, this because a Bristol Channel sailing pilot cutter is also in for repair. Both are now attracting much media attention and visitors to this part of Gloucester Docks.

The day of the planned move across the dock from the Museum to the shipyard proved to be an ideal window of opportunity weather-wise. Clear blue skies with no wind. However a slight hiccup meant the dry-dock gates could not be fully opened. The following day when all was ready the weather had changed to be replaced with a howling gale! With much trepidation and with the help of Tommi Nielsen's men, the dredger was slowly and successfully moved across the dock into the dry-dock. As I write the boiler company is hard at work refurbishing the boiler whilst Friends and volunteers are busy carrying out maintenance work to the remainder of the vessel.

May I take this opportunity of reminding you of our annual **Boat Jumble** on **Sunday 1st April**. We would like to have SND No 4 back at her berth at the Museum, steaming away and attracting many crowds of people. That may be a little ambitious, it will depend very much on the date when she is released from the dry-dock.

◀ CW

The Waterways Festival & Giant Boat Jumble is at the Waterways Museum, Gloucester Docks, on **Sunday 1st April** from 10am to 3pm. Entry is just £3.60 (includes free entry to the Museum) and accompanied children, under 14, are free. A really good day out with something for everyone! – Ed

Photo: Waterways World/Chris Witts



Steam dredger, SND No. 4 in Tammi Nielsen's dry-dock opposite the Museum at Gloucester Docks.

IWA The Inland
Waterways
Association

Gloucestershire & Herefordshire IWA Branch **SOCIAL MEETINGS**

at Gloucester Yacht Club, 7.30pm

**Thursday March 1st
Branch AGM**

followed by an address by
Jack Hedley, chair of South Wales
and Severn Waterways Partnership
(The Canal and River Trust locally)

This is the chance to meet him and
question him on the new arrangements
and how it will effect the area.

**Thursday April 5th
Tom Rolt and
Robert Aickman**

(founders of IWA) a talk by Stuart
Burroughs, Curator of Bath at
Work Museum.

Further details of any of the above:
Roger Holmes 01594 840316

Winter Bazaar Report By Pat Skeet

We were blessed with an extremely mild day which brought the crowds out early and saved considerably on our heating expense! We repeated Judy Street's very successful idea from last year and had a draw for a luxury Christmas hamper – a truly magnificent affair, donated by the members of the Trading Committee, beautifully made up by Judy.

Not only did the luxury hamper bring people in it also raised a great deal of money. An unforeseen benefit was the happiness it gave its winner, an elderly lady from Newent whose husband is in a care home suffering from Alzheimers. She said that she and her friend had much enjoyed their visit to our Winter Bazaar and was truly ecstatic with the contents of the hamper.

There was a bottle stall (sporting generous donations from Bulmers), organised very ably by Derek Weaver and an H&G sales stall. Both of these took record amounts, as did our refreshments. We all enjoyed home-made soups and more lovely cakes than were good for us! Our stallholders included a stall selling Traidcraft goods, a "Phoenix" stall, a beautiful variety of home-made candles (which looked good enough to eat), really lovely etched glass, jams and pickles to die for and home-made cards (which all looked anything but). There was much interest in our H&G CT display boards and in our current work.

On top of all this, Caroline Jones spent her day painting traditional water cans with roses and castles. She made it look deceptively easy and ended up with a commission to paint a pair of traditional stern doors on a narrowboat. A very well earned tribute!

At the end of a very happy and busy day I was delighted with a profit of just over £750. Our very grateful thanks go to the large band of supporters who hired a table, provided food, or worked tirelessly in any role on the day.

Please put November 10th 2012 in your diary.

If you have quality crafted goods that would be appropriate for sale at our Winter Bazaar, and would like a stall, then please book a place early with Pat Skeet (01568 797 032).

◀ PS



Above: Some of the many visitors who came to see the crafts and produce on sale.
Right: The winning ticket for the Hamper is announced.

The **WRGies** are coming

By Cliff Penny

... *again!*

**waterway
recovery
group**

Who will:

spend their holidays paying £56 to stay for a week in a village hall (described in the promotional leaflet as "basic" accommodation) ... sleep on the floor ("bring your own sleeping bag") and be responsible for cooking their own food (and for doing the washing up)? They will (almost certainly) get very muddy and wet, be tired at the end of each day (and most certainly be very tired by the end of the week) helping our volunteers to restore the H&G Canal. The last thing they will do is clean and tidy the hall so that you wouldn't even know they'd been there! The local pub knows what to expect (we should be on commission really!) as they will enjoy themselves too – all in moderation of course!

Who are they?

Yes, the WRGies are coming to the H&G canal (again!).

WRGies from all over the country regularly assist local volunteers on waterway restoration projects and, apart from many long weekends, there are about 30 week-long Canal Camps each year. Regular readers will know that the Waterway Recovery Group (part of the Inland Waterways Association) played a vital role in successfully achieving the first phase of our massive Over Canal Basin project. When they heard about the extension of the Canal from Over Basin on to the new Vineyard Hill site they were quick to book a week on their national calendar to assist us!



Top: 2010 WRGies at Aylestone pouring the concrete for the slipway.
Right and below: 2011 WRGies at Over relaying the towpath and repairing walls.



So in April (at Easter) the WRGies will be working with us at Vineyard Hill – anyone to help with the washing up?

◀ CRP

The need for the LAND FUND

The **H&G CT LAND FUND** was first reported in **The Wharfinger** edition 109. There are exciting land acquisition opportunities presenting themselves in both counties where sufficient funds are essential for us to be able to proceed. The Trust prides itself on being an independent, self-sustainable organisation so this is one way we are endeavouring to deliver the Trust's goal of the complete restoration of the **Hereford and Gloucester Canal**.

The **LAND FUND** is totally independent of our **RESTORATION FUND** (update on P. 38) which supports a different aspect of restoration each year. Each fund is 'ring fenced' for the specific purpose.

Up to now the Trust has been reactive in rising to the challenges and opportunities presented, often as a result of developments adjoining the Canal; this will continue and more details of this will be seen in future editions of **The Wharfinger**.

To make real progress on the ground we now also need to be pro-active and acquire new sites – to empower your team to deliver that, we need to build a **LAND FUND**.

If you know of a land owner that would like to give us a section of Canal we can now do all the paperwork from our offices at **THE WHARF HOUSE**.

On a more practical note, some sections can be acquired for just the legal and a few other costs, others are nominal value – but this all still adds up and so it needs funding!

There are other sites where we may need to buy an entire field (or more) and the cost will be much greater.

We currently have fantastic opportunities ahead of us, **THE WHARF HOUSE** can meet the overheads of staff to help deliver this but we now need to build a fund so that we are serious players in being able to acquire the sites we need.

H&G CT

LAND FUND

A new leaflet about the **Land Fund** is now available. It includes a contribution form (details on page 35).

HEREFORDSHIRE
&
GLOUCESTERSHIRE
CANAL TRUST

Working together in the present, to revive
the past, and secure a better future.



What is the LAND FUND?

The **LAND FUND** will provide the means to negotiate the crucial new sites along the line of the Canal where there is no new development present or where we can not acquire the line of the Canal by other opportunities. It is a vital fund to help us eventually restore the full length from Gloucester to Hereford.

Individuals

We are looking for members and supporters who are in a position to contribute to the **H&G CT LAND FUND**. There are many ways you may be able to help with this as an individual:

- it may be a one off donation
- it may be a monthly sum by standing order
- you might have something of value that you no longer require and the e-bay sales operation at **THE WHARF HOUSE** can sell.
- you may choose to remember the restoration work of the Canal Trust in your Will for people in the future to enjoy.

Organisations

If you are a group or organisation who wish to support our restoration work, you may also

THE OAK INN

Staplow HR8 1NP

01531 640954



A VERY WARM WELCOME AWAITS YOU AT OUR NEWLY REFURBISHED INN
OPEN FOR LUNCH AND DINNER EVERY DAY IN OUR COSY BAR AREAS OR RESTAURANT
GOOD SELECTION OF REAL ALES - GOOD BEER GUIDE 2009 & 2010

REAL LOG FIRES, FLAGSTONE FLOORS, OLD BEAMS & HOPS
PRETTY BEER GARDEN - PARTIES CATERED FOR - DOG FRIENDLY
THE ONLY PUB IN HEREFORDSHIRE THAT ABUTS THE LINE OF
THE HEREFORD AND GLOUCESTER CANAL

FOUR EN-SUITE B&B ROOMS NOW AVAILABLE
www.oakinnstaplow.co.uk



wish to contribute to this fund. Here are some of the ways this might happen:

- it may be a collection made at one of your regular meetings
- it could be a specific raffle or other fund raising event where the proceeds are kindly donated to the H&G CT **LAND FUND**
- it could be as a result of one of our speakers coming to your organisation and explaining the history and efforts of our volunteers to maintain and increase the stretches of canal restored.

Whatever your group, whether you are an historical society, a group of boaters, walkers or nature conservationists or other interested parties, your contribution to the **LAND FUND** will help our teams continue to deliver more exciting lengths of Canal over the coming years.

If you would like a speaker to give a talk to your organisation about the work of the H&GCT please use the *Contact Us* link on our website.

How to contribute to the **LAND FUND**

A new leaflet about the **LAND FUND** is now available by contacting us via the website, www.h-g-canal.org.uk, or by contacting ^{THE} WHARF HOUSE, details inside front cover. The leaflet contains a form which will help you to make a contribution to the **LAND FUND**.

Thank you

LAND FUND Update

Since the update on page 39 of the last edition we have received a further two donations totalling £3,250 - both donors requesting no publicity. *Our sincere thanks to those concerned.*

Working together in the present, to revive the past, and secure a better future.®

More than just a holiday...



ABC LEISURE GROUP

Boat Hire

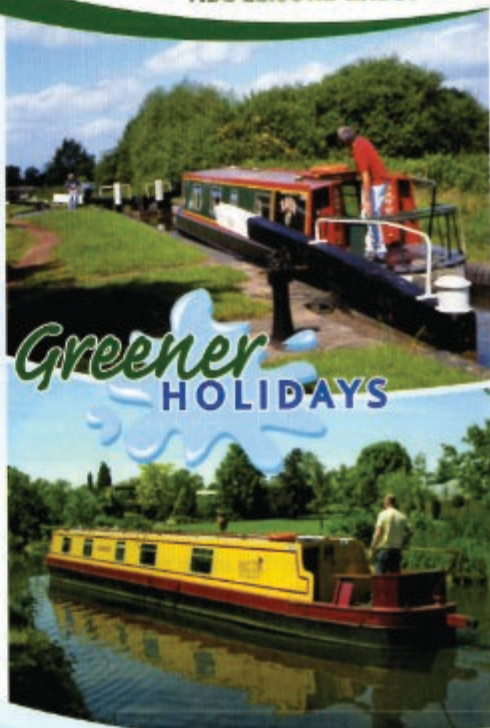
- > Weekends & mid week short breaks, weeks or more with a wide choice of start days
- > 11 Start bases providing access to nearly 2000 miles of canals and rivers
- > Beginners welcome
- > Over 200 boats with 2 to 12 berths in one free brochure
- > Tourist board inspected boats
- > For your safety and enjoyment BMF approved handovers
- > Online availability & booking



www.ukboathire.com

Visit the website or call us for your free brochure

0845 126 4098



Other Services Available

Marina Services - repairs & servicing including LPG at 8 locations
Boat Sales - new & used with full internet listing
Mooring - including dry docking or craning & blacking service
Chandlery - stock held at marinas with internet mail order service
Inboard & Outboard Engines - supplied, fitted & repaired
High Quality Bespoke Boats - built to any stage, shell, sailaway or fully fitted



narrow boats...

...wide horizons

Working with Nature

By John Chappell

Water Mint, botanically, ***Mentha aquatica*** can be found wherever there is water – no surprise there then!

The rhizomes (roots) are wide spreading and fleshy and usually grow in the shallow margins of streams, rivers and, of course, canals. The rootstock is happy completely submerged in which case the plant rises well above the water level.

Water Mint is an herbaceous perennial with square stems and opposite pairs of leaves. The leaves are unusual in that pairs are arranged at alternating 90 degree angles up the stem; they are slightly hairy and often have a purple flush. As with most members of the mint family the leaves are highly aromatic and can be used as a flavouring in salads or cooked foods. It is an interesting substitute for ordinary



Photo: John Chappell

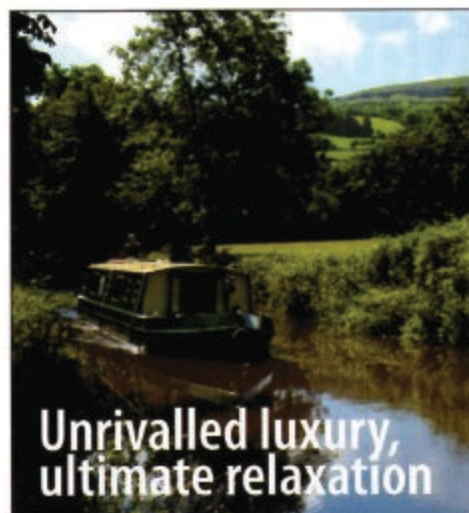
Water Mint (*Mentha aquatica*)

garden mint, albeit more pungent, and should be used cautiously!

The tiny, tubular flowers are purple-pink, closely clustered into a rounded whorl at the top of the stem. Smaller whorls of flowers often appear in the leaf axils below the main bloom and are equally attractive to bees, butterflies and other insects when in full flower in June and July.

Historically used as a 'strewing' herb, water mint was used in granaries to keep mice and rats off the grain. Today the leaves are often used in herbal baths and when dried can make a fragrant pillow. Medicinal uses are numerous, but most common is as a tea made from the leaves. Simply place a bunch of leaves from the top of the plant into a mug and cover with just boiled water. By the time the drink is cool it will have acquired a good flavour. Add sugar if it takes your fancy, it is very refreshing and is said to be good for digestive disorders.

♦ JC



Unrivalled luxury,
ultimate relaxation

Unwind however you choose, and for as long as you like, in the splendour of the Brecon Beacons on the Monmouthshire and Brecon Canal.

To know more: 01873 858277

www.beaconparkboats.com

The Restoration Fund 2012 *Update*

As regular contributors to the Restoration Fund know each year the proceeds raised in the previous 12 months are utilised to assist a different restoration project somewhere along the 34 miles of the H&G Canal.

Each autumn Restoration Site Leaders are invited to submit suggestions to the H&G CoM for the allocation of funds in the following financial year. This year the successful suggestion was that the Restoration Fund be utilised towards the costs of constructing the proposed overflow weir at Over – which will be located within our new Vineyard Hill restoration site. However, the costs of the work at Vineyard Hill are being funded by THE WHARF HOUSE therefore the CoM have decided that the Fund allocation in 2012 will assist the construction of essential overflow weirs at Aylestone Park and/or Oxenhall.



Part of our steel former for restoration of the Ell Brook aqueduct that Fund Members contributed to in 2005.

Should you wish to contribute a regular sum (from just £3 per month) to the Restoration Fund then Fund Secretary Peter Lawrence will be pleased to answer any queries on 01684 564 075; Peter can also arrange to send you a copy of the Standing Order instruction to your Bank in respect of regular donations to the Restoration Fund (or you can download the form from our website).

Thank you  CRP

E. B. HAYWARD & Co.

We are a family run business established over 40 years ago, specialising in sheetmetal work and fabrications in most metals including mild steel, stainless steel, aluminium, titanium, copper and brass.

Items can be manufactured to your own drawings and/or from instructions, in quantities from 1 to 10,000 off and can range from the size of a washer right up to fabrication of 1 tonne.

We have a wide client base with particular involvement in hydraulic press, concrete, materials handling, feed and flour milling industries.

It has been our pleasure in supporting the Herefordshire and Gloucestershire Canal Trust for over 17 years, and we will continue to *work together in the present, to revive the past, and secure a better future.*

© H&GCT

For further details please
contact Simon Hayward –
Tel: 01452 700384
Fax: 01452 700740



SHEETMETAL WORKS
ASHLEWORTH
GLOUCESTER
GL19 4JJ

Please don't bin it!

When you have finished reading this edition **please don't put it in the bin** (even the one marked recycling!); let it 'spread the word' to friends, work colleagues or even those in your local doctor's or dentist's surgery. Apart from making even more people aware of our canal and the voluntary work of the H&G CT, it may also result in a new member. **Thank you.**

Stamps

Are you collecting your used postal stamps for us, please? Steve Bence launched his fund-raising initiative on page 26 of the last edition (*giving contact and other details*). We can raise money from any type of postage stamp even the mundane 1st and 2nd class!

Gift Membership

If you are struggling to find that elusive Birthday or 'thank you' gift why not give a H&G CT Gift Membership – it will outlive those flowers or box of chocolates! Just send your and the recipient's details, together with the relevant membership subscription for the gift, to the mail order sales address (*see contacts inside back cover*). Your gift will be sent inside an H&G Garth Allen card at no extra cost to you.

LOGS for SALE at Over

Mainly ash and hawthorn, available.

All proceeds support the Canal Restoration. For more information please contact David Penny at david@thewharfhouse.co.uk

**Please support our advertisers –
SUPPORT OUR SUPPORTERS**

The Government still allows charities such as the H&G CT to obtain money for nothing! It doesn't cost you anything **extra**, other than your membership subscription and/or donation, and does not complicate your tax affairs either! Provided you pay an equivalent amount of tax the H&G CT can claim a payment that effectively increases your membership subscription, or donation etc., by 25%.

If you are a tax payer are you absolutely certain that you have told us that you wish us to benefit from this generous gift aid scheme? Our Treasurer Liz Connors, or Membership Secretary Nigel Jefferies, will be only too pleased to help (*see contacts inside back cover*). **Thank you.**

Expanding our operations!

We are producing additional H&G CT display material so that we can promote the Canal and the work of the H&G CT at a number of events that are taking place over the weekend of the Queen's Jubilee celebrations. The additional display material will enable us to attend more events at the same time than in the past – **what we cannot make are new volunteers to help our small team at these events!** Why not have a day out (or more) with us this year? The events are listed on page 21 and Janet Moulton will be very pleased to talk to you about any of them.

I forgot – have you?

Having written the "please remember!" paragraph, at the very end of the last edition (to remind you to please change your membership subscription standing order with your Bank) I was about to write a similar plea at the end of this issue only to realise, to my horror, that **we had forgotten to do so.** **Please** if you pay by standing order update your instruction **now** with the bank (before you forget) **no matter when the payment is due.** **Thank you. ♦ CRP**

COPY DEADLINE FOR THE NEXT ISSUE

MONDAY 9TH APRIL

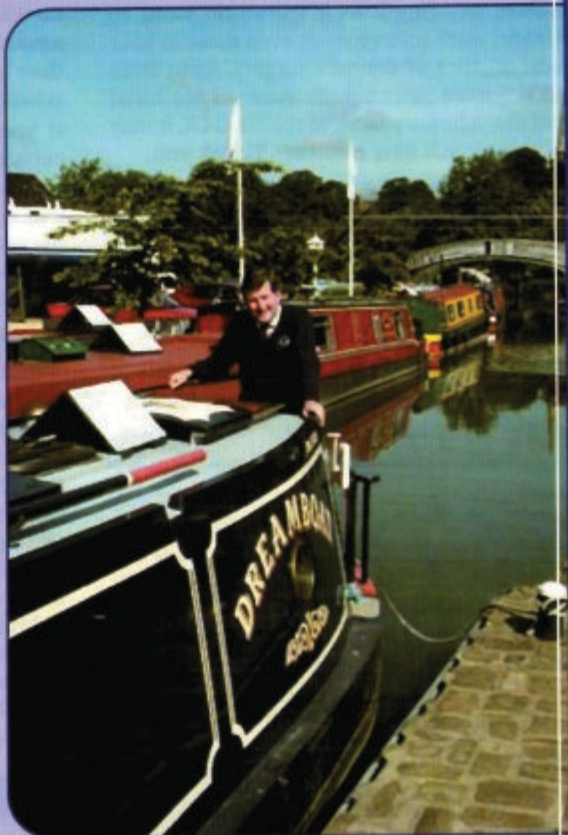
Buying or selling your DREAMBOAT?

*Then make Braunston Brokerage
– at the heart of England's
waterways – your first port of call!*

*Established in 1988, we are
a major player in the selling
of narrowboats – new and
secondhand – with a
reputation for professionalism
that is second to none.*

*Our marina offers the fullest
range of support services.
Uniquely, we have two dry
docks on-site for surveys,
hull-blackening, repainting, sign-
writing and below waterline
repairs. Also engineering and
refit facilities.*

*Sell your Dreamboat
where it will be seen!*



For full information – including our competitive brokerage package – contact Tim Coghlan at:

Braunston Marina Limited, Braunston,
Nr Daventry, Northants NN11 7JH
Telephone 01788 891373
Fax 01788 891436

Website: www.braunstonmarina.co.uk
Email: sales@braunstonmarina.co.uk

Want to help?

The Canal Trust is always in need of new volunteers as our activities continue to expand. We can normally find a use for any skill from gardeners to first aiders, brickies to those willing to help with a shovel or pen.

Contacts

Contact any of these names TODAY!

Liz Connors

18, St Ethelbert Close,
Sutton St. Nicholas,
Hereford, HR1 3BF
Tel: (01432) 880 155
liz@lizconnors.orangehome.co.uk

Cliff Penny

"Coppice", Burley Gate,
Hereford, HR1 3QS
Tel: (01432) 820 866
canal@penny-ep.co.uk

David Penny

Tel: (01452) 332 900
david@thewharfhouse.co.uk

Brian Fox

Tel: (01432) 358 628
brianfox@talktalk.net

Wilf Jones

Tel: (01452) 413 888
wilfred.jones@homecall.co.uk

Nigel Jefferies

Tel: (01432) 850 661
ncjefferies@talktalk.net

Ted Beagles

Tel: (01452) 522 648
tedbeagles@blueyonder.co.uk

Maggie Jones

Tel: (01452) 618 010
maggiejones@blueyonder.co.uk

Chris High

Tel: (01568) 615 575
chris@chrishigh.plus.com

Paul Henshaw

Tel: (01684) 292 997
paulhenshawuk@yahoo.co.uk

Martyn Tilford

Tel: (01452) 790 358
martyn@tilford.free-online.co.uk

Peter Moore

Tel: (01531) 820 671

Wally Thrush

Tel: (01989) 750 235
wallythrush@btinternet.com

Peter Lawrence

Tel: (01684) 564 075
peter.molly2@waitrose.com

Trading Company

Mail Order Sales,
Janet Moulton
18, Coningsby Court,
Coningsby Street,
HEREFORD, HR1 2DF
Tel: (01432) 264 366
jmoulton@tiscali.co.uk

Visit our Website ...



www.h-g-canal.org.uk

Want to Join?

Please support our voluntary work by becoming a Member of the H&G CT. A membership form is available online or from THE WHARF HOUSE.

UK Membership Rates

	Annual	Life
Individual	£10	£200
Joint/Family	£15	£300
Senior Citizen	£7.50	£115
Joint Senior Citizen	£10	£150
Corporate	£25	£500

PLEASE NOTE: All subscriptions and donations are treated as being made under the Gift Aid scheme unless you state that you do not wish us to do this. Payment made by Standing Order greatly assists us and payment remains under your control. All payments to: 6, Castle Street, Hereford, HR1 2NL

Advertising in The Wharfinger

Show the support of your business by advertising in The Wharfinger. Rates from £12.00 per month and we will gladly design your advertisement free of charge. Contact The Wharf House.

Tel. 01452 332 900
ADS@h-g-canal.org.uk

Unless specifically stated opinions expressed are those of the author and do not necessarily reflect the policy of the Herefordshire and Gloucestershire Canal Trust. As a Registered Charity, with defined objectives, we cannot endorse the content of any specific advertisement, product or services. The Trust accepts no liability for any matter, or advertising, contained in this magazine. Reproduction of extracts from the magazine is welcomed provided that full acknowledgement is given.

Membership records are computerised. Your entry is available for inspection if you send a SAE to the Membership Secretary.

Whilst we try to ensure dates are correct please verify them with a relevant Organiser.

© 2012 Published by the Herefordshire and Gloucestershire Canal Trust.

The Wharf House Company Ltd [No. 4627931] and H & G Canal (Sales) Ltd. [No. 2710215] are part of the Herefordshire and Gloucestershire Canal Trust Ltd. group of companies. The Herefordshire and Gloucestershire Canal Trust is a non-profit distributing company limited by guarantee [No. 2704407] and is a registered charity [No. 1010721]. Registered Office: The Wharf House, Over Canal Basin, Over, Gloucester, GL2 8DB.

The Wharfinger

The Herefordshire & Gloucestershire Canal

Work started in 1792 but was not completed until 1845, making this the last major route built in Britain, but for the navigations of Birmingham and the Manchester Ship Canal. The canal stretched for 34 miles from the River Severn at Gloucester, via Newent, Dymock and Ledbury to the city of Hereford, utilising some 22 locks and 3 tunnels. The Canal was formally closed in 1881 to allow construction of the Ledbury to Gloucester railway which in its turn was closed by Dr Beeching in 1964.

The Canal Trust

The Canal Society was formed in 1983 and in 1992 became the Herefordshire and Gloucestershire Canal Trust, a registered charity. The Trust has an ordinary and corporate membership of some 1,300 from all over the country and abroad!

Our objective is to fully restore the 34 mile Canal, from its connection with the 2,500 mile inland waterway network at Gloucester to the centre of Hereford. We have major restoration sites in each county, which together extend to some 4 miles.

 = restoration sites suitable for public access.



Please note: Unless indicated it should not be assumed that Rights of Way exist. We are working on the Canal with the co-operation of the land owners and their neighbours - please help the Trust to maintain its good relations with them. Thank you.