

The *Wharfinger*

Summer 2013

HEREFORDSHIRE & GLOUCESTERSHIRE CANAL TRUST



116
EDITION

£1

free to members



Working together in the present to revive the past and secure a better future®

REBUILDING 34 MILES OF CANAL BETWEEN GLOUCESTER AND HEREFORD

Who does what ...

Vice Presidents:

R. E. Barnes TD, Richard Graham MP
James Hervey-Bathurst CBE, Duff Hart-Davis,
Mark Harper MP, Sir John Lushington Bt,
Jesse Norman MP, Diana Organ, Tim Parker,
Bill Wiggan MP

Council of Management:

Chairman: Ralph Barber

Vice Chairman: Will Frecknall

Treasurer: Liz Connors

Committee: Brian Fox, Nigel Jefferies, Caroline Jones,
Maggie Jones, Wilf Jones, Janet Moulton, Cliff Penny,
David Penny

Finance:

Treasurer/Chairman: Liz Connors

Committee: Brian Fox, Will Frecknall, Paul Henshaw,
David Penny

H&G Canal Sales & Promotion

Hereford: Janet Moulton (Chairman), Barbara Moses,
Ray Moses, Penny Shetliffe, Pat Skeet, Derek Weaver,
Heather Worth

Gloucester: Andy Fowler, Felicity Fowler, Maggie Jones,
Sian Krotkiuk, Pat March

Health & Safety

Wilf Jones

Membership services

Secretary: Nigel Jefferies

Gift Aid: Liz Connors

Support to Council of Management

Minutes and Admin: Debbie Barber

IWA Branch Liaison: Maggie Jones

Website Development

Team Leader: Maggie Jones

Web Master: Nick Dymott

Committee: Ted Beagles, Chris Byrne, Liz Connors

Digital Photos Archive: Colin Dymott

Social Events:

Organiser: Janet Moulton

Support: Nigel Jefferies, David and Sheila Walshaw

Talks and Walks

Co-ordinator: Nigel Jefferies

Those in italics are not Directors.

HEREFORDSHIRE & GLOUCESTERSHIRE CANAL TRUST

Working together in the present to revive
the past and secure a better future.®

Restoration Sites

Aylestone

Weir Site Leader: Brian Fox

Withington Project

Chairman: Wilf Jones

Kymin East

Waterway Recovery Group, Wilf Jones

Yarkhill

Leader: Chris High

Deputy: Paul Hatt

Oxenhall

Leaders: Brian Fox, Geoff Hopper

Lengthsman: Peter Moore

Moat Farm

Project Chairman: Wilf Jones

Site Leader: Martyn Tilford

Vineyard Hill

Project Chairman: Wilf Jones

Site Leader: Ted Beagles

Over

Site Leaders: Ted Beagles (Wed) Maggie Jones (Sat)

Over Committee: Ted Beagles, Chris Byrne,

Maggie Jones, David Penny, Belinda Sprigg

Llanthony

Leader: Paul Henshaw

Publicity

Press Liaison: The Wharf House

The Wharfinger

Editor: Cliff Penny

Design/Production: Maggie Jones, Maple Graphics

Proof Reader: John Hammond

Advertising: The Wharf House

Postmasters: Janet Moulton, B Moses

THE WHARF
HOUSE

DONATING ALL
PROFITS TO THE
CANAL TRUST

Over
Gloucester
GL2 8DB

Waterside Restaurant, Tea Rooms, Visitor Centre, Superior 3&S,
Telephone 01452 33 2 900 www.thewharfhouse.co.uk

Company Secretary: Liz Connors

Directors: Ralph Barber, John Hammond

Commercial Director: David Penny, **Accounts:** Kariane Genders

Legal & Project Development Team

Commercial & Technical Director: David Penny

Delivery co-ordinator: Wilf Jones

Legal Services: Rosamund Rutter, Katie Purton

PA/Admin: vacant

Planning Liaison: Wally Thrush

Engineering: Thomas Ashworth, Will Frecknall

Quantity Surveyor: Tony Kelley

Contents

page

3	Editorial – A Different Approach (2)	26	Restoration Team: Moat Farm
5	Chairman's Column: Southern Canals	29	Kymin East
6	Planning Application Approved Dymock	31	Restoration Team: Yarkhill at Burcott Rd
9	Thank you Black Prince	32	Restoration Team: Oxenhall
10	Restoration Team: Over Basin	34	Model Boat Club at Over
13	Over Canal Festival	35	News from the Friends of Gloucester Waterways Museum
14	Mill Barn at Over Canal Basin	35	IWA Branch Meetings
16	Canal Walks	36	In the news ...
17	H&G Sales & Promotion – Outings 2013	37	Working with Nature
18	Social Evenings at The Royal Oak	38	New from H&G Sales & Promotion
19	Annual General Meeting	39	Not Quite the Last Page
20	Annual Report		
22	Grand Holiday Draw 2013		
23	Membership Form		
25	Restoration Team: Llanthony		



Cover: Swans enjoy Oxenhall by Brian Fox

THE WIDEST RANGE OF GARDEN MACHINERY IN THE COUNTY BEST PRICES FOR MILES

SALES • SERVICE • SPARE PARTS



MOWERS • TILLERS
SHREDDERS • BRUSHCUTTERS
HEDGETRIMMERS
BLOWERS • POLE PRUNERS
CHAINSaws



RON SMITH & CO LTD

ESTABLISHED OVER 40 YEARS



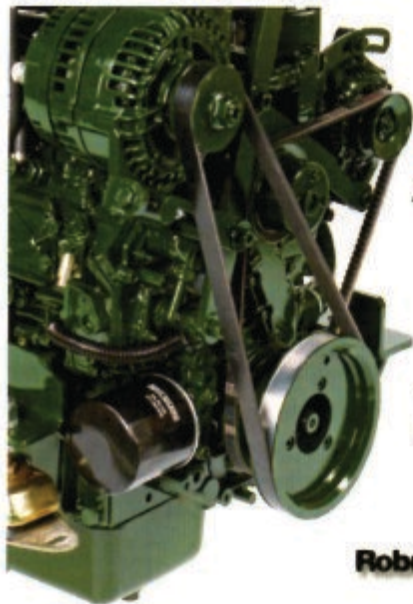
4 NEWTOWN ROAD
WORCESTER WR5 1HF

01905 738 800

www.ronsmithandco.co.uk

168 WIDEMARSH ST
HEREFORD HR4 9HN

01432 343 433



***BETA* MARINE**

28 - 90hp Marine Engines

Robust Reliability from our world beating engines!

Smooth low speed running as standard with our heavy flywheel

Two alternators are standard - high output when cruising

230 Volts option for your washing machine, microwave, etc

Excellent technical support and service with a 3 year warranty



www.betamarine.co.uk

Green Line

Tel: 01452 723492

Email: sales@betamarine.co.uk

A Different Approach (2)

Over the years I have tried to avoid repetition of a topic in my editorials – but make no apologies on this occasion for carrying one on from last time!



The Planning Application for the much needed housing and other community facilities at Dymock has finally been granted Planning Permission (thanks to considerable support from both the Parish and District Councillors). However, when writing in the last issue little did I know that at a very late stage in the process the H&G CT's **different approach** philosophy was going to be tested yet again! Agreement had been reached that the Housing Association properties would pay an annual Canal Maintenance and Management charge (index linked in perpetuity), along with the private housing, as is our long established Policy in both counties. At a very late stage the Three Rivers Housing Association's legal team determined that social housing could not legally make such payments. Rather than accept "it can't be done", and losing this important income source (not just on this site but, by setting a precedent, from this type of housing on other sites in the future) our own Legal and Project Development Team swung into overdrive. They were determined to find a **different approach** to ensure that this essential part of our strategy for delivering the necessary long-term income for a sustainable H&G Canal was not breached! *All the details are on pages 6-9.*

One of the annual tasks falling to the Editor is to pull together numerous contributions for the CoM's Annual Report to the AGM for the centre pages of this edition. In editing this information it struck me that there has been a **different approach**, which has become particularly apparent in the past 12 months, in the way that virtually all of our Restoration Teams now undertake their work. Whilst *occasional* 'away days' (working on other sites) have been undertaken in the past, last year in addition to working on their own site, many of our volunteers have been *regularly* undertaking work at other points along the canal. *The willing flexibility of our volunteers to turn their hand to these different tasks, at various locations, is greatly appreciated and not taken for granted.*

Readers may have noticed a number of relatively small changes to the front cover of **The Wharfinger** last time - including the H&G CT's new 'mission statement' – "REBUILDING 34 MILES OF CANAL BETWEEN GLOUCESTER AND HEREFORD". *To many this may seem rather obvious!* However, **The Wharfinger** forms a vital component in our contact with a multitude of people and organisations many of whom are hearing about the H&G CT/the Canal for the first time. Whilst our motto "Working together in the present to revive the past and secure a better future"[®] has served us very well (and continues to do so) the new statement complements it by succinctly explaining exactly what we are doing and where.





ABC Leisure Group

- **Narrowboat holidays**
- Brokerage services
- Moorings with shore line hook ups
- Boat shares & management
- Chandlery on site
- Blacking Services
- Dry Dock / Crane for Surveys
- Diesel, Calor Gas, Pump Out, Coal
- Repairs, Maintenance & Refit
- Full Boat Re-Paint



**10 marinas across
the country**

everythingcanalboats.com



Southern Canals

*Well, finally the weather is starting to feel like spring.
Rumour has it we may even have a summer?*



March 2012 was, apparently, the 2nd sunniest month of last year. When, this March, I was walking the newest bit of canal on the Wilts and Berks at Wichelstowe in Swindon it was snowing; I hope March isn't going to hold the same record this year!

This length of canal and lock was created next to the newest canal-side village in England, right next to the M4. So why was I in Swindon on a very cold Sunday in March visiting this bit of canal? Well, I was attending a meeting of the **Southern Canals Association** with fellow H&G CT Directors Liz Connors and Maggie Jones. *{This Association brings together canal restoration societies and trusts, working on the inland waterways south of Birmingham, to share experiences and knowledge for the benefit of all. There is a similar Northern Canals Association undertaking the same role.}*

Apart from the tour of the site mentioned above, we had presentations from the Wilts and Berks Canal project team who, working with the local council, developed this new length. The new chairman of the IWA, Les Etheridge, gave a talk on the IWA's approach to working with the Canal and River Trust. John Dodwell, one of the Trustees of the CRT, then gave his views of the new organisation. We also had some discussions

on the changes to planning procedures that are coming out and new boating regulations that affect all waterways.

It was a very informative day enabling us to meet members of other canal trusts, giving an insight to their challenges and all the different stages we are at in developing the canals across the southern part of the UK. Many interesting facts came out, but one that comes to mind is that since the start of canal restoration in the later 1950s, over 500 miles of canals have been restored in England, Scotland and Wales – *so far ...*

If you want more information on the Swindon project*, and an idea of what is going on elsewhere in canal restoration, the **Waterways World Annual 2013** reviews over 60 restoration schemes and highlights the top 10% "Canals of the Future" – **one of these top 6 is the H&G Canal** – see "in the news" on page 36.

Hope to see you along the canal sometime and of course at the AGM in July (further details are below).

◀ RB

**It is interesting to note from the Annual that Wiltshire Council funds a full-time Project Officer (working on behalf of the Wiltshire Swindon & Oxfordshire Canal Partnership) to actively support delivery of the canal. Ed.*

NEW Improved! 2013 Annual General Meeting

To be held at 7.30pm, Tuesday, 16th July, 2013

at the **Royal Oak, Much Marcle**. Further details pages 19-22



Look forward to seeing you there!

Planning Application Approved

Dymock

By David Penny



Martin Penny/The Forcaster

As reported in **The Wharfinger** (page 6 of Ed 110) the H&G Canal Trust led a partnership of Dymock Parish Council, Two Rivers Housing Association and the Landowner to restore the Canal in the centre of the village and deliver 15 social housing and 5 open market housing units – as well as a new village car park and play area for the community.

In edition 114 of **The Wharfinger** we reported that a revised planning application had just been submitted by the H&G CT to replace the original application (registered in March 2012) and subsequently withdrawn when it became evident that Forest of Dean Planners would recommend refusal. The revised application included changes made to reflect further detailed discussions with the planning authority, and other interested parties, in order to deliver an acceptable scheme. A number of further grounds for refusal were successfully overcome by negotiation but the officials still recommended refusal on grounds that we considered were unwarranted and had been refuted by world-

renowned consultants who were advising the H&G CT.

From left: Local H&G CT Member Paul Blandford; Councillors Terry Ball, Dorothy Brooke and Terry Boon (Chairman of Dymock Parish Council); Rosumund Rutter and David Penny (H&G CT), walk the future line of the Canal in the village which will use the former railway bridge. This was restored by Gloucestershire County Council in 2004 specifically to permit the Canal to pass under the road.

renowned consultants who were advising the H&G CT.

Following detailed discussions, and strong support from the Parish Council, at the March Planning Committee Forest of Dean Councillors overruled their Planners' recommendation that the proposals be refused planning permission by 12 votes to 2. We very greatly appreciate the support of the Councillors which was clearly expressed not just for the scheme but for the work of the Canal Trust itself "which deserves our ongoing support for their tremendous work". **The Wharfinger** also got a very favourable mention during the official debate!

The approval will permit the development of affordable housing to keep Dymock a vibrant community and ensure the survival of the village school (and other facilities including the community owned public

Housing association	plots 1-4 & 11-20
Open market properties for sale	plot nos. 5 – 9
H&GCT (Open Market rent)	plot no.10

Public footpath to village & Beauchamp Arms PH

Additional village parking

Play Area

Line of Canal towards Ledbury

Restored stretch of Canal through new housing development.

H&G CT property (for rent)

Line of Canal towards Gloucester



FOOD FESTIVAL 2013

19th, 20th, and 21st July

LIVE
DEMOS

Gino
D'Acampo



James
Martin



Mary
Berry



NEW
FOR 2013

LIVE MUSIC

FREE
ENTRY

OVER 80
TEMPTING
STALLS

book celeb tickets now only £7 (plus booking fee) at our Customer Services Desk or at

GLoucesterQuaysFOODFESTIVAL.CO.UK

E.B HAYWARD & Co.

Sheet Metal Work, Welding & Fabrications

We are a family run business established over 50 years ago, specialising in sheet metal work and fabrications in most metals including mild steel, stainless steel, aluminium, titanium, copper and brass.



- Items can be manufactured to your own drawings or from instructions.
- Quantities from 1 to 10,000.
- Sizes can range from a washer right up to fabrication of 1 tonne.

We have a wide client base with particular involvement in hydraulic press, concrete, materials handling, feed and flour milling industries.

It has been our pleasure in supporting the Herefordshire and Gloucestershire Canal Trust for over 20 years, and we will continue to work together in the present, to revive the past, and secure a better future. © H&GCT

Simon Hayward: 01452 700384, Fax 01452 700740

SHEET METAL WORKS, ASHLEWORTH, GLOUCESTER, GL19 4JJ

house), the construction of a 20 space car park to meet a severe shortfall in the village and a new play area to replace the one that is on the line of the Canal. This development has been permitted for two distinct reasons: firstly the affordable housing on the edge of the village but then, secondly, the open market housing solely as enabling development specifically to facilitate delivery of the Canal. All of the housing is outside the immediate area where development would normally be permitted (technically in the 'open countryside') – the provision for the restoration of the Canal being the axis on which the whole development hinged.

A Different Approach (again!)

At a very late stage the Housing Association found that it would be outside their legal powers to meet the whole life maintenance costs of the Canal on the site even though this had previously been agreed in respect of the properties that they will manage. As our Legal & Project Delivery Team were not prepared to make an exception to our well established strategy that all such development proposals should provide an essential long-term maintenance income stream for the Canal in the area there was a need to find a solution. This put everything 'on hold' whilst urgent negotiations took place! The result is an innovative solution: the Housing Association will now construct 14 affordable properties (instead of 15) thus making space for the developer to sell some of the land at the nominal affordable housing rate to the H&G CT upon which a 3 bedroom detached house will be built at the same trade cost as the other properties on site. The H&G CT will rent this out to bring in at least the equivalent perpetual income which would have been obtained annually from the Housing Association properties and secure a considerable value of equity in the property above the capital costs to the Trust. **Yet another successful outcome working on the H&G 'Different Approach' basis!**

This approval will deliver a small but key
The Wharfinger

part of the Canal within the heart of the village with the freehold of the Canal and all the surrounding area (outside the development) being transferred to the H&G CT. The developer will bring water and electricity supplies to the towpath for future use and will bear the costs of re-routing a main electricity cable. When each of the open market houses is sold a small percentage of the price will also be paid to the H&G CT to be used towards the costs of restoring the Canal; each of these private properties will also pay an annual (index linked) sum in perpetuity towards the maintenance and management of the Canal in the area in accordance with our normal policy.

A 'win-win' outcome for the Canal, the landowner, developer, Housing Association and, most importantly, **the community.**

♦ CRP/DRP

Thank you Black Prince

Hereford 28/4/2013

Attention of Mr John Lulas,
Operations Manager Black Prince

Dear Sir,

Having been lucky to win first prize in the Herefordshire & Gloucestershire Canal Trust Annual Draw, donated by your good selves, I took a party of three people in the Dutchess Class for four days from Napton down the Oxford Canal to Fenny Compton and return. We had excellent attention from your staff and found the boat and its amenities of high standard. I hope the seeds of future hire have been sown to my guests.

Being a Member of the H&G CT I thank you for valuable support in helping to raise funds for the Trust.

Thank You. John Arnold

Restoration Team

Over Basin

Incorporating **Vineyard Hill** By Ted Beagles



Ted Beagles

Much of the Over Basin Team's work recently has been related to heritage aspects and to the maintenance, repair and improvement of our boats.

Early morning reflections at Over Basin.

After the prolonged operation of our tug Bosley at the September Canal Festival weekend last year it was noticed that there was a slight oil leak from the outboard hydraulic motor. Our volunteer hydraulics expert, Andy Fowler, figured out that it could be removed without taking the boat out of the water, and eventually managed to remove it. That turned out to be the straightforward part of the job! Dismantling it to get to the shaft seals combined skills of all of our engineering experts for several weeks. Then Peter came in one Wednesday and announced that his son Darren, who works for **Goodridge Engineering Ltd**, a small local engineering company, had offered to take it in to work and have go at it. This was an amazing stroke of good fortune for us as not only did they succeed in dismantling it, it was returned to us a week later, fully reconditioned and bench tested! This was done in conjunction with

Inta Hydraulics Services Ltd, who occupy an adjacent workshop, and all at absolutely no cost to the H&G CT. Andy and Peter soon had everything painted and all re-assembled on Bosley – where everything is now running smoothly with no signs of any leakage. Many thanks to Neville Mackay, Darren Tartaglia and all involved at **Goodridge Engineering**, and Garry Fisk and James Jarvis at **Inta Hydraulics Services**.



Andy and Pete repairing Bosely's motor.

I reported in the last edition that our trip boat Mr Maysey had sunk and been pulled up the slipway. Our thanks to **Hedley Midwinter** for arranging for one of his vehicles to move the boat within the site for a detailed inspection. Little did we realise then just how extensive the problem was. Inspection revealed a substantial section of the hull had corroded from the inside; water leaking through the deck plate joints had been trapped in the rear section of the hull as there was no way for it to drain away into the bilges. A large section of the rear will need to be replaced. Ultrasonic thickness measurements of the rest of the hull (generously carried out for us at no charge by one of our regular advertisers, **A&D Marine Services**) showed it to be in reasonable condition; so whilst the boat is out of the water for the repair we shall be undertaking a complete refurbishment and repainting of the entire hull. Our sincere thanks to **A&D Marine Services** and **Hedley Midwinter** for their help.

During the winter we have started restoring the better of our two reed cutting boats for use as a general work boat, without the reed cutting mechanism. The cutting mechanism will be restored so that it may be fitted, for exhibition purposes only, as modern safety regulations make it impractical to put it into full working order. The second boat was in such poor condition that, reluctantly, it has been scrapped after removing any useful parts for use as spares. H&G CT member Henry Clarke, the Much Marcle blacksmith, assisted with this work.

Following inspection, and some work by a specialist licensed contractor, the asbestos issue on three Heritage boats has now been resolved satisfactorily. Weather permitting, Pat and Belinda have restarted work on restoring the cabins; all our



Top: white circle shows the significant hole in Mister Maysey.

Above: Tim, Bob and Ernest review the reed cutting boat.

Below: Repair site on the hull of the reed cutting boat.



**A&D Marine
Services Ltd**

**COVERED DRY DOCK FACILITIES
REPAIRS AND REFITS TO ALL TYPES OF CRAFT
WELL STOCKED CHANDLERY
OUTBOARD MOTORS SALES AND SERVICING**

**HEMPSTED DRY DOCK,
338 BRISTOL ROAD,
GLOUCESTER GL2 5DH**

Telephone: (01452) 415430
Fax: (01452) 307674
www.admarineservices.co.uk



Ted Beagles

Top left: Andy Smith and Henry Clarke dismantling the scrapped weed boat.

Above: The restored slipway winch positioned by the lock approach.

boats continue to have weekly test runs along the full length of the Canal at Over to keep the machinery in good condition; this also helps to keep the channel clear.

Mr Philip Hughes of Churchdown kindly donated an old slipway winch which has been immobilised, cleaned up, painted and put on show for visitors near to the Lock entrance as an interesting piece of waterways heritage machinery.

The Trust acquired parts of an old Gloucester County Council road signpost some time ago, which have languished at Oxenhall and Over Basin for several years. They have recently been reunited at Over. The post is now painted and erected near ^{THE} WHARF HOUSE; the decorative top piece has been repaired by Dave Hurren, who has also made new finger direction boards suitable for its new home by the canal.

The delayed start to Spring has given us more time to get on with general tidying up of areas of the site with much restacking of bricks and clearance of brambles before we are inundated with new growth. John has checked over all the mowing machinery ready for this year's onslaught!

◆ TB

Dave Hurren makes the new finger direction boards for the repaired segmental concrete signpost which looks splendid in its new location.



Want to get involved at Over then please ring:-

Ted Beagles 01452 522 648

Maggie Jones 01452 618 010

HEREFORDSHIRE & GLOUCESTERSHIRE CANAL TRUST

Festival

Canal

Free Admission

+ BEER, CIDER AND PERRY FESTIVAL

Saturday 31st August – Sunday 1st September, 2013

11am – 5pm

Heritage Boat Processions ♦♦ Fun on the water
Crafts and Produce Stalls ♦♦ Good Food ♦♦ Music
Fire Brigade display ♦♦ Horse drawn boat
and lots more ...



Over Basin near Gloucester

Turn off the A40 at traffic lights 250 yards west of
Over Roundabout (junction of A40/A417). GR SO 816197


Gloucester Quays
Pleased to support the H&G Canal

We hope to see you there!

Mill Barn at Over Canal Basin

By David Penny

photovoltaic panels

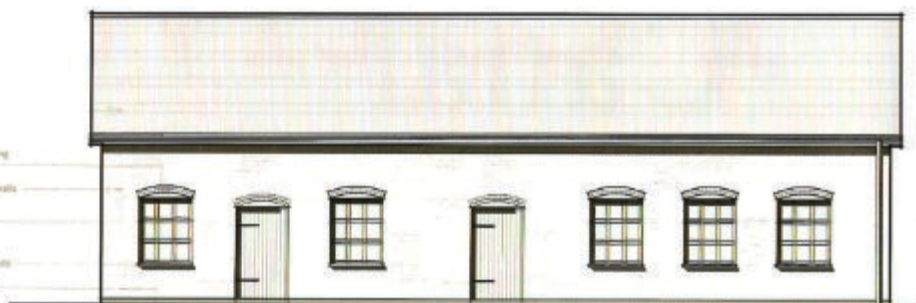
crack repaired engineering
brick window arches

reclaimed cobblestone walls

steel-framed windows

reclaimed cobblestone walls

reclaimed blue brick base



Canal elevation

Rear elevation

continuous glazing to ridge

steel standing seam roof finish

white barge boards, fascia & soffits

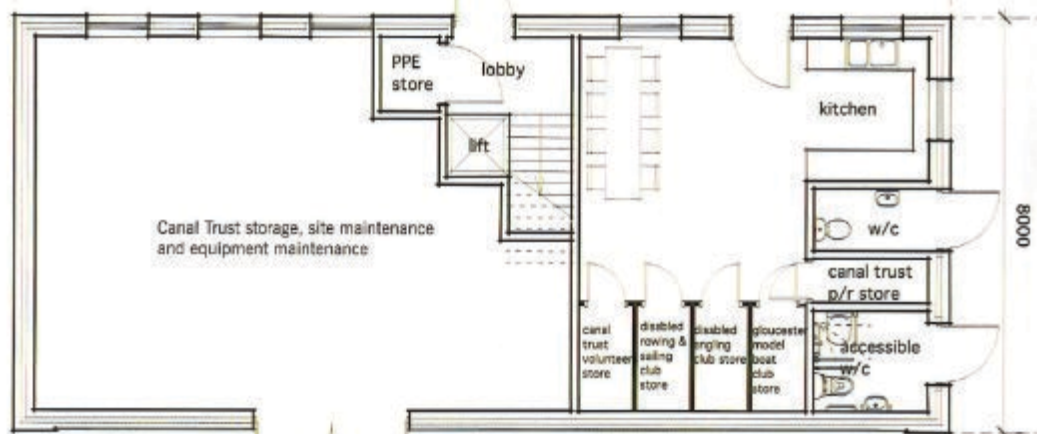
reclaimed cast iron rainwater goods

planted under horizontal siding
(downstream)



Ground floor

18000



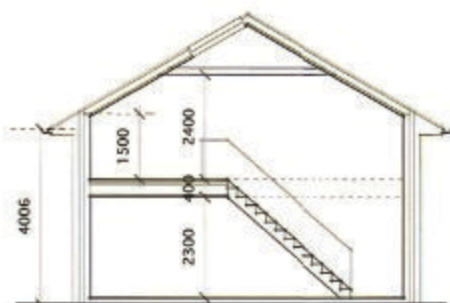
Many of our readers will recall the story of the demolition of the former hospital buildings at Over – demolition that extended to the Mill Barn as that lay in the way of the new noise bunding and screening for the development.

As the barn was just going to be flattened where it stood we offered to take it down carefully for the developer and we put as much as was re-usable into storage on site.

It has ever since been a long term objective to rebuild the barn on site. These plans for the proposed replacement: Mill Barn have now been drafted, discussed with our local volunteers and put before the Stauntons Hill Residents' Association meeting in April when the proposals were well received. The final paperwork to support a Planning Application is now being put together so that we may submit this later in the year. ➔

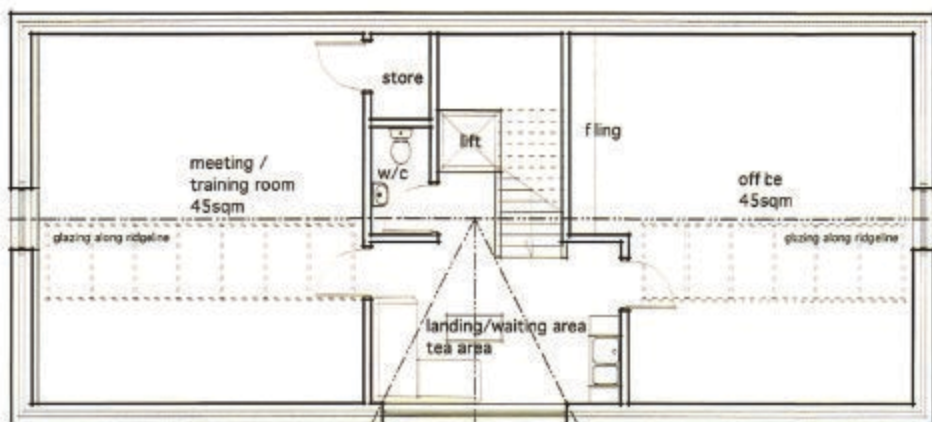


Side elevations



Cross-Section

First floor



The reconstructed Mill Barn will provide for the long term maintenance needs of the Canal Trust. It will allow us to replace ageing equipment with more suitable professional equipment for the maintenance and upkeep of the Canal providing it with both secure storage and somewhere for it to be maintained.

Crucially it will replace all of our current shipping containers on site and see the site hut and site toilet replaced with proper facilities for both the Trust volunteers and

the other users of the Canal basin who have made it their home – the Gloucester & District Model Boat Club and Gloucester Disabled Rowing and Sailing Group. The loft space will provide a crucial meeting room which we are currently lacking and considerably enhanced office facilities to enable the Legal & Project Development Team to meet the demands upon them both to directly take the Canal forward and to work with our partners to help deliver the Canal.

◀ **DRP**



The group of containers and site hut which the barn will replace.

Chris Byrne

Canal Walks

The H&G CT Canal Walk leaflets are proving popular with members and supporters who would like an interesting guided walk that includes part of the route of our Canal.

- CANAL WALK NO. 1 **STAPLOW**
- CANAL WALK NO. 2 **WITHINGTON**
- CANAL WALK NO. 3 **DYMOCK**
- CANAL WALK NO. 4 **LLANTHONY**
- CANAL WALK NO. 5 **OXENHALL**



The leaflets are available from ^{THE} WHARF HOUSE or by post from Nigel Jefferies (address inside back cover). Please send your name, address and a loose second class stamp for each leaflet plus another loose stamp for return postage.

H & G Canal Sales & Promotion will be well into our programme of events by the time you receive this edition of **The Wharfinger**. Maggie Jones reports on the first one below, and other reports will be in the next issue.

Why not join the Team – you will be made very welcome.

Our forthcoming events are:-

June 8-9	Hellens Garden Festival
June 29-30	Braunston Boat Rally
July 13	Sutton Fete
August 4	Herefordshire Country Fair at Hampton Court Castle
Aug 31- Sep 1	Over Canal Festival
September 7	Alfrick Country Show
November 9	H&G CT Winter Bazaar

Bottle Stall


We shall be holding another bottle stall at our Winter Bazaar so bottles of all shapes and sizes would be very welcome, please. Ideally please bring them to one of our Social Evenings or contact Janet Moulton to arrange collection. 

◀ JM

Gloucester Boat Jumble

The Sales & Promotion teams' first outing for this year was at the Gloucester end when we attended the **Gloucester Boat Jumble** (organised by *The Friends of Gloucester Waterways Museum*) held in front of the Waterways Museum. Although it was starting to get warmer, a keen gusty wind was making mischief for many of the stallholders so we were very grateful to the Waterways Museum for allowing us to set up our stand inside their building; *thank you*.

As well as Grand Holiday Draw tickets we had some new items to sell which the Over volunteers had been busy making over the winter. These included wooden stepping-stones, and a willow obelisk kit (see page 38 for more details).

Much interest was shown in our restoration work on the H&G Canal with some people learning about us for the first time. A worthwhile day for us all.  MJ



New items for sale produced by the Over volunteers – stepping stones and a willow obelisk kit.



Part of the H&G stand at the Boat Jumble.

Maggie Jones

Social Evenings

at the Royal Oak



Please support our monthly meetings, make a note on the calendar and tell your friends and neighbours; we have an excellent venue and interesting speakers on a wide range of topics. Why not share transport and make an evening of it – **everyone is welcome!**

The third Tuesday of every month (except December) at The Royal Oak, Much Marcle
7.30 for 8pm start.

June 18th

Members' Midsummer Miscellany

Films, slides, quiz, talks – if you would like to contribute please contact Janet

July 16th

Annual General Meeting

*Will start at 7.30pm prompt. After the formal AGM there will be a new look at our progress and the way forward.
Everyone welcome.*

August 20th

Natter and a Noggin

September 17th

Jeremy Picton-Turbervill

The Hereford Bull

*its inception & participation in the
Diamond Jubilee River Thames Pageant*

*followed by the **Grand Holiday Draw***

3 RECENT TALKS

Report by Janet Moulton

Three very well attended socials on three varying subjects. In **February** we heard about another canal restoration project over the Border. The Mon & Brec has made great strides forward, with major funded projects particularly in the Fourteen Locks area, and it has a thriving visitors' centre.

More changes around Gloucester Docks were explored in **March** when Tony Conder gave us a potted history and urged us to join one of his guided tours.

April was our railway talk with Gareth Davies recounting his days on Herefordshire railways and showing fascinating old photos of long gone or greatly reduced stations.

I hope to see you at future social evenings where we have an interesting line up of speakers – please don't forget to contact me if you wish to contribute to the members' evening in June. ♦ JM



ANNUAL GENERAL MEETING

of the

HEREFORDSHIRE & GLOUCESTERSHIRE CANAL TRUST

WORKING TOGETHER, IN THE PRESENT, TO REVIVE THE PAST AND SECURE A BETTER FUTURE®

to be held on **TUESDAY, 16TH JULY, 2013**
at the **THE ROYAL OAK, MUCH MARCLE,**
NEAR LEDBURY, COMMENCING AT 7.30PM.

ANNUAL REPORT AND ACCOUNTS FOR YEAR ENDING 28TH FEBRUARY 2013

Members and friends will be made very welcome.

AGENDA

1. Welcome/formal opening of the meeting.
2. Apologies.
3. Approval of previous AGM minutes.
4. Chairman's Report.
5. To receive and approve the report of Council, the Income and Expenditure Account and Balance Sheet of the Trust (and associated Companies) for the year ended 28th February 2013, Report of the Honorary Auditor thereon, and the Report of the Honorary Treasurer and of the Membership Secretary.
6. To Appoint the Auditors of the Trust (and associated Companies).
7. To Re-appoint those Council Members retiring by rotation who offer themselves for re-election:-
Liz Connors, Nigel Jefferies
To note that Brian Fox has retired by rotation and does not offer himself for re-election.
8. Close of Formal Business.
After the meeting there will be the opportunity to talk with Restoration Site Leaders and other members of the team and to view the latest display panels charting our progress.

We aim to allow people ample time for general questions after the close of formal business. **Prior notice of questions should ensure a comprehensive response and would be greatly appreciated.**

Annual Report for the year ending 28th February 2013

This is the twenty first **Annual Report** of the **Herefordshire and Gloucestershire Canal Trust Limited** [a non-profit distributing company [formed in April 1992, No.2704407], which is a Registered Charity [1010721] and of the wholly owned Trading Company – **Herefordshire and Gloucestershire Canal (Sales) Ltd.** [2710215]]. They replaced the Herefordshire and Gloucestershire Canal Society which was launched in 1983. It is also the report of ^{THE} WHARF HOUSE COMPANY LTD. [4627931], the wholly owned subsidiary all profits from which will be used for the promotion and restoration of the Canal. The Canal Trust is indebted to its *Council of Management*, and to the *Trading Company Board*; during the period under review [year ended 28th February 2013] those listed below have been members:-

COUNCIL OF MANAGEMENT OF THE CANAL TRUST (12 MONTHS TO 28-2-13)

Ralph Barber; Liz Connors; Brian Fox; Will Frecknall (co-opted 04/12), Nigel Jefferies; Caroline Jones; Maggie Jones; Wilfred Jones; Janet Moulty; Cliff Penny; David Penny.

TRADING COMPANY H&GC (SALES) LTD (12 MONTHS TO 28-2-13)

Liz Connors; Ray Moses; Barbara Moses; Janet Moulty; Penny Shetliffe; Pat Skeet; Derek Weaver; Heather Worth.

^{THE} WHARF HOUSE COMPANY (12 MONTHS TO 28-2-13)

Liz Connors; Janet Moulty; David Penny

Italics indicates not a director

The 12 months ended 28th February 2013 saw physical work continuing at all our restoration sites, work commence on another new site at **Kymin East** and the official opening of the restored **Vineyard Hill** section at **Over**. The fit-out of the last bedroom at ^{THE} WHARF HOUSE was finished with the opening of the ground floor B&B bedroom; work continued on our **heritage** and other boats. **Extensive negotiations** are ongoing in respect of an increasing number of sites in both counties together with the development of new **partnerships** at a number of locations.

Last year we reluctantly made the decision to increase membership rates as from January 2012 (for the first time since 1995) so this is the first full year they have applied. We appreciate our Members

continued support during difficult economic times when other voluntary organisations are reporting dramatically falling numbers. The increase in subscriptions had a slight adverse impact on overall numbers; total **Membership** is 1,319 (- 19) with 76 new members joining in the period; Life Membership increased by 20 to 210. Following a review, and the encouraging growth of the Land Fund, Council of Management decided to close and merge the Restoration Fund and all contributors agreed to the transfer. We are very grateful for these and other donations from members and businesses which have been very generous this year – including a substantial donation from a mystery benefactor. As a result a new Opportunity Fund for unrestricted donations over £20,000 has been established to be utilised for projects that will make a strategic difference and act as a catalyst to attract further donations/grants. Our sites generated in excess of £8,000 through selling obsolete items, logs, and Open Days. Gift Aid in the year was £5,135.27. Expenditure was below the total budget although there was some variance by site as we took the opportunity to work in new areas/sites which were only on our wish-list when the budgets were drawn up! Volunteer time worked for the H&G CT exceeded 2,950 days; an equivalent value of over £289,000. [Figures for individual restoration sites are given with each report. The significant balance is derived from all of the other volunteer time involved in the many activities supporting and promoting the H&G CT.]

^{THE} WHARF HOUSE continues to trade profitably despite the general difficult trading conditions in the economy. It continues to fund all planning, legal and project development costs. The expansion of our **Legal and Project Development Team** at ^{THE} WHARF HOUSE was facilitated by ongoing, much appreciated, sponsorship from **Peel Holdings/Gloucester Quays**. A £5,000 private sponsorship to fit out the ground floor bedroom was donated to the Canal Trust Land Fund. The Restaurant's AA Rosette and 4 Star rating for accommodation was confirmed for another year; this was upgraded to 4 Star Gold for its excellence.

The **Herefordshire & Gloucestershire Canal (Sales) Ltd** team continued to promote the Canal both locally and around the country. As it is no longer a Charity Commission requirement this will be the last year of separate accounts for H&G Canal

(Sales) Ltd. All monies have been transferred to the Trust (£4,576.80). **H&G Canal Sales & Promotion** will operate directly through H&G CT with a committee for each county. The appalling weather conditions of 2012 led to the cancellation of some events but we put on the wellies and carried on despite the mud! The main national events were the Crick Boat Show and Braunston Boat Rally where there was great interest in the H&G and more locally we kept the Canal in the public eye. The small team continues to give both time and money to attend these events. **Social evenings** have been well supported and costs balance out with our own members providing some of the talks to offset the hire costs of the hall. **The Wharfinger** continues to attract high praise for both content and production; we are very grateful for the continued support from **Print Plus** and our regular advertisers. The **Grand Holiday Draw** surpassed all records making over £3,500 for the Trust

Restoration Site Reports: During the year an increasing number of our volunteers worked on multiple sites. Over 1,000 trees were planted during the year. In **Gloucestershire** at our **Llanthony** site, work has continued on the programme to improve the cottages. Three new windows were fitted, the electrics were upgraded to ensure full compliance, a fence was replaced and one cottage was refurbished prior to a new tenancy. Following a structural survey on the girder footbridge across the River Severn by contractors acting for the Government Pipeline and Storage System, new overhead cross members and a pipeline suspension system were installed at no cost to the Trust. In addition to the normal maintenance activities, volunteers have continued clearing the river bank. [139 Volunteer days = a value of £12,950]. At **Over Canal Basin** the Vineyard Hill section was successfully excavated and filled to programme in the spring and officially opened during the September Over Canal Festival. The persistent heavy rain throughout autumn and winter has led to some slippage of the hillside into the Canal. The first phase of the overflow weir was constructed across the towpath bank. Substantial work has been undertaken improving the entrance area including two brick gateposts constructed using the original hinge and capping stones from the old hospital gateposts. The Basin is regularly used by **Gloucester & District Model Boat Club** (who also assist in weed clearance etc) and by **Sailing4Disabled**. As always, considerable effort has gone into maintaining the site to keep the vegetation at bay and to repair the damage caused

by flood water flowing rapidly across the lower areas when the rivers are in flood. [478 Volunteer days = a value of £23,900]. At **WHARF HOUSE** the new ground floor bedroom (popular with both our less able guests and with those who have dogs) was completed. Maintenance of both the gardens and the building continues and the September Over Canal Festival – supported as always by our staff and volunteers – was a great success. [87 Volunteer days = a value of £4,350]. A very successful first year has been completed at **Moat Farm**. As the year progressed we have been joined by several new volunteers and now have an excellent regular team on our fortnightly Tuesday visits. A variety of tasks have been undertaken although the majority of the work has been on vegetation management. Whilst water levels have been high this has not prevented us completing most of our planned jobs. [182 Volunteer days = a value of £16,850]. The **Oxenhall** team migrated to Canon Frone and spent a couple of months rebuilding the portal to the old canal feeder. On return, after an inspection, it was decided that the stability of the Ell Brook Aqueduct should be improved by removing the tons of spoil covering the stone arch and reinforcing it with a concrete membrane. Half was completed before the onset of winter and the rest of the year has involved clearing and tidying long abandoned areas and planting many new trees. [284 Volunteer days = a value of £18,600].

In **Herefordshire**, the **Yarkhill** Team has continued to be strong and active achieving a total of 532 volunteer/workdays during the year accruing a further £31,000 of volunteer value. Surprisingly, considering the weather and work restrictions, this was only slightly less than last year. Three different sites were worked with the Team recording 358, 122, and 52 volunteer/workdays at Yarkhill, Aylestone and Kymin sites respectively. Carefully controlled clearance of our new site at **Kymin East** was undertaken by **Waterway Recovery Group/WRG Forestry** as part of the National Reunion Weekend in November and they and our own volunteers have continued with the work subsequently. The principle of 'minimum intervention and maximum retention of trees' has been highly successful and subject to much favourable comment from local residents and landowners. [405 Volunteer days = a value of £28,750]. At **Aylestone Park** considerable manual effort was required to clear a heavy build up of weed from the Canal and to clear the adjacent banks. Excavation for the overflow weir was undertaken by **Waterway Recovery Group**. Due to the

subsequent atrocious weather conditions it was decided to award the first phase construction to a specialist contractor but ground conditions regrettably precluded further progress over the winter. [122 Volunteer days = a value of £6,100]. Undergrowth was cleared and trees planted at **Burcott Road** (Hereford).

Work continues both to restore, improve and maintain our **Heritage Boats**. Whilst our small trip boat Mr Maysey ran superbly providing trips for visitors along the new length of canal for the Over Canal Festival and Vineyard Hill opening, a major hull leak has been assessed and the boat is out of the water for repairs.

Sustainability: The H&G CT is committed to managing its activities in a sustainable manner wherever practical to do so. The photovoltaic cells at ^{the} **WHARF HOUSE** continue to reduce our energy demands from the national grid and to generate (literally!) income for the Trust. Special key fobs ensure that there is no wasted energy within the guest accommodation when unoccupied and most lighting in the building is low energy – much having been converted to latest technology LED fittings. We continue to make good use of material reclaimed

from the former hospital and all sites recycle materials wherever possible.

Legal & Project Development Team: The team have been exceedingly active during the year in handling all Legal work for the Trust as well as negotiating, designing, and developing new sites – some of which are referred to above and some of which will come forward in the coming years as most sites take years to bring to fruition. The Trust has never had so many sections in negotiation or so many exciting projects in hand. A notable scheme delivered to Planning just outside of the period was the landmark scheme at Dymock in Partnership with the Parish Council, landowner and housing association setting a number of new precedents for future partnerships. The ongoing support of the L&PDT by **Peel Group** is particularly appreciated.

The Council of Management thanks all of our volunteers for the splendid effort and hard work which has been undertaken on the various projects along the line of the Canal and all of those who have worked at ^{the} WHARF HOUSE, on the boats, on our promotional display and sales stand and to those who have assisted the H&G CT in many other ways during the year.

Summary (abridged) Accounts will be available at the AGM or Members may obtain a full set by sending a large SAE to the Treasurer. The full accounts will also be available at the AGM.

A member may appoint a proxy to vote in his/her stead. A proxy must be someone entitled to vote at the meeting. Proxy forms are available from Liz Connors. The forms must be completed, signed and returned to her so that they are received at **least 48 hours prior to the commencement of the AGM**.

Note regarding Agenda item No.7; one third of the Members of the Managing Council are required to stand down each year. All those standing down

(listed at 7. on p.19) are offering themselves for re-election unless otherwise stated. New volunteers to serve on the Council of Management are welcome; as reported in the last edition of **The Wharfinger** formal Nominations (on forms obtainable from the Treasurer) have to be received not less than 7 days nor more than 28 days prior to the AGM. The maximum size of the CoM is 18 and, unless new nominations bring the total in excess of this number, the above stated Members will be returned un-opposed. The CoM is also empowered to Co-opt Members during the year (subject to the maximum size not being exceeded).

GRAND HOLIDAY DRAW 2013



HEREFORDSHIRE & GLOUCESTERSHIRE
CANAL TRUST - H&GC SALES

GRAND HOLIDAY DRAW 2013

1ST PRIZE **NARROW BOAT HOLIDAY for FOUR**
Donated by Black Prince Holidays
20th October 2013 to 11th November 2013

2ND PRIZE **ONE DAY'S BOAT HIRE** on the Mon and Eric Canal
To be taken prior to 21.9.13 & including 50% Holiday
Donated by Black Prince Holidays

3RD PRIZE **ONE NIGHT DINNER, BED & BREAKFAST**
for TWO at THE WHARF HOUSE, Over Gwent
Donated by The Wharf House

Prizes to be drawn at the September Canal & Boat Day, Mon 20th
or October 1st 2013. Registered under the Gambling Act 2005. **TICKETS £1 each**

Once again this year we have some great prizes! ➤

MEMBERSHIP FORM

Please complete below and return this form to:

HEREFORDSHIRE & GLOUCESTERSHIRE CANAL TRUST
6 CASTLE STREET, HEREFORD HR1 2 NL

Name

Address

Post Code:

Telephone:

E-Mail:

Please give details of any skills you have that might assist us in our work.

Details of membership rates can be found on the inside back cover.

New member ☐

Renewal ☐ Gift ☐

Please help us to keep our subscriptions low and to accelerate our restoration progress by making a donation.

Subscription £

Donation £

Total payment £

Thank You

GIFT AID: as a Registered Charity we can increase our income from subscriptions, and any donations, by almost one third provided you pay tax. If you DON'T pay tax or DON'T want us to do this tick this box. ☐

Date: / /

BANKERS ORDER

To: (Name and Address of Bank)

Sort Code:

My A/C No.

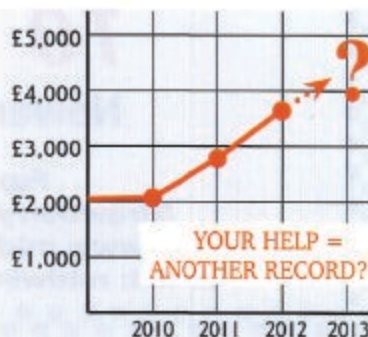
Signed Date

Please pay to account No. 11600694,
 Sort Code No. 16-21-20 of the Herefordshire
 and Gloucestershire Canal Trust at the Royal
 Bank of Scotland, 21 Broad St. Hereford,
 HR4 9AP, the sum of £
 on this day and thereafter **annually**
 (on the anniversary) until further notice.

This instruction CANCELS any previous Annual Bankers Order in favour of the Canal Trust or former Society.

Our thanks to all those who have already purchased tickets and returned the money, to the many who have made donations in lieu and, especially, to our prize donors **Black Prince Holidays, Beacon Park Boats and The Wharf House**. As the draw is not until our Social Evening at The Royal Oak on the 17th September there is still lots of time to help us make 2013 yet another record-breaking year! Janet Moulton (01432 264 366) will be delighted to send you tickets.

Thank you.



MIDWINTER TRANSPORT

ESTABLISHED 25 YEARS

With a full range of vehicles including

- flat curtain sided and refrigerated ■
- from half tonne Escort to 38 tonne artic ■
- Hiab crane vehicle ■ Nationwide ■



TOTALLY COMMITTED TO DELIVER

Newent 01531 820276

Fax: 01531 822247

Strawberry Hill, Newent, GL18 1LH

www.midwintertransport.co.uk

email: midwintertransport@yahoo.co.uk

Restoration Team

Llanthony

By Paul Henshaw

Activities at Llanthony have been somewhat curtailed during the early months of 2013 as we have been assisting at Moat Farm and Kymin East, before the onset of the bird nesting season.

However good progress has been made clearing the river bank and cutting back willow trees many of which were hanging horizontally towards the middle of the river. The challenge we faced was not only to cut back the trees but also to retrieve them from the river and haul them up the river bank and to carry it out safely.

After much deliberation and carrying out the appropriate risk assessments, we developed a safe working method involving two teams. The first team had one member wearing a safety harness roped off via an overhead belay and secured by an experienced ropeman. Hauling ropes were tied on so that the second team could retrieve the branches from the river once they had been severed.

It proved to be a slow and painstaking exercise but the result is a well maintained river bank with the integrity of the bank being kept intact through the retention of the existing tree root systems.

◆ PH

Would you like to join our team at Llanthony? Please call Paul Henshaw on 01684 292997



Top: Attaching retrieval ropes.

Above: Setting up the safety ropes.

Below: Cutting back the overhanging branches.



Alan McBride



Restoration Team

Moat Farm

By Martyn Tilford

As summer gathers pace and the growing season gets into full swing it will be interesting to see how the vegetation management work we have carried out so far has enhanced the site. At least we can now walk easily through the area without resorting to machetes to clear a passage! The lawnmower and strimmer should now become the norm, replacing the chainsaw and bonfire.



WRG Forestry Team

Shortly before curtailing our tree cutting activities for the bird nesting season the Waterway Recovery Group Forestry Team volunteers visited us for a weekend. At various locations a number of trees required enhanced forestry skills to either fell or improve them with selective limb removal. Specialist 'climbers' were able to undertake the aerial chainsaw work with skilful rope handling whilst other experienced foresters dealt with the precision felling of several 'difficult' trees that lay on the line of the Canal. Some of our own regular volunteers also benefited with useful tuition and mentoring on forestry and chainsaw techniques.

Many thanks to Clive Alderman (WRG Forestry Team Coordinator), climbers Tim and Ben and to the rest of the Forestry Team for their excellent work, guidance and good humour throughout the weekend.



Top: Climbers Tim and Ben organise their ropes.

Middle: WRG Forestry Team setting off on Saturday morning.

Left: Ben improves an oak by removing a long horizontal limb.

Above right: Regular Paul H tackles a rotting field maple under the watchful eye of WRG mentor Martin.

Water Levels

As previously reported the dry canal bed conditions that greeted us when we started at Moat Farm last February soon gave way to raised water levels. The high rainfall ensured this continued for most of the first year. Although an isolated section, this length does receive run-off water from adjacent fields. Managing this during restoration, and ensuring (where levels permit) that we make best use of it subsequently, is an important task. We understood where most of the water enters the canal, via a pipe at the north end, but the

mystery of where it leaves was solved when a land drain headwall was uncovered towards the south end of the site. Despite having been buried for many years this outfall drain flowed freely and was traced with drain dye to a nearby watercourse. Excavated ditches now enable us to have some control of water levels in the canal bed. This will provide more suitable conditions during tree stump removal and canal bed profiling.



Left: Drain headwall found 4 feet down in adjacent field.

Below: Water outfall control ditch near south end – the drain headwall can just be seen.



Marilyn Telford / Alan McBratney

The Land Fund will provide the means to negotiate the crucial new sites along the line of the Canal where there is no new development present or where we cannot acquire the line of the Canal by other opportunities. It is a vital fund to help us eventually restore the full length from Gloucester to Hereford.

For more details please pick up a leaflet at one of our stands or contact us via our website: www:h-g-canal.org.uk.

H&G CT

LAND FUND



Working together in the present, to revive the past, and secure a better future. ©



Left: Two splendid mature oaks with enormous ivy growth.

Right: Close up of cut ivy stems - up to 8 inches in diameter.



Above: A rather pretty hawthorn stump almost encircled with ivy - unfortunately the tree had collapsed under the weight of ivy.

Right: Another oak with a single 6 inch ivy stem.



English Ivy

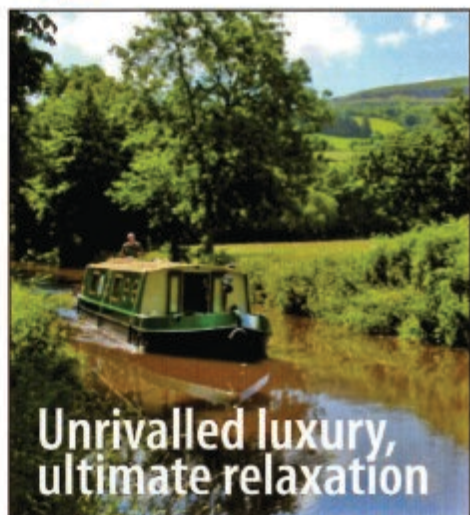
John Chappell's excellent article in the last edition of *The Wharfinger* gave a valuable insight into this interesting plant. At Moat Farm we are not short of some very extensive ivy growth and much discussion has been had on its merits and demerits! Many of the mature oak and field maple trees have enormous ivy growth with stem diameters of greater than 6 inches. It was felt that the sheer dead weight of ivy in the crown and on the limbs of several of these trees posed a threat to their wellbeing. A number of ivy stems have now been cut and the situation will be monitored over the next couple of seasons. However, in recognition of the plant's wildlife value in terms of cover and food, an extensive amount has been retained.

Many thanks to everyone who has helped on Tuesdays at Moat Farm.

♦ MT

Would you like to be involved?
You will be made most welcome, please
contact either **Martyn Tilford** on
01452 790 358 or
Wilf Jones 01452 413 888

PLEASE NOTE: Public access to the Moat Farm site is unavailable at present but the Trust is working on proposals to develop this.



Unrivalled luxury, ultimate relaxation

Unwind however you choose, and for as long as you like, in the splendour of the Brecon Beacons on the Monmouthshire and Brecon Canal.
To know more: 01873 858277
www.beaconparkboats.com

Martyn Tilford / Alan McBride

Kymin East

Part of the **Withington Project**

By Wilf Jones

As reported in the last edition, we planned a second weekend of work to continue our work on clearing the line of the Canal at the Kymin site. Once again we were blessed with good weather, and we had an excellent turnout during the weekend.

A further two midweek volunteer 'away days' continued to clear and tidy the site so that the next stage survey work can be undertaken. *Once again many thanks to all our volunteers for achieving so much and making excellent progress.*

Our sincere thanks to **Adrian Hope of Adrian Hope Tree Services** both for his freely given specialist advice in respect of



Chris Bloydon

The Canal is revealed once more thanks to the hard work of the volunteers.

some particularly difficult and important trees and for undertaking work on them for us without charge.

We incorrectly stated in the last report that 'JJ' Clews was the landowner, when in fact she is the daughter of the landowner Peter Clews, our sincere apologies to both for this error.

◀ WJ

stationery • leaflets • mailers • posters • folders • programmes • newsletters • brochures • prospectuses • calendars • magazines • books • exhibition panels

PRINT PLUS

01432 272025

126 Widemarsh Street • Hereford HR4 9HN

Fax: 01432 353962 • Email: enquiries@printplushereford.co.uk

www.printplushereford.co.uk



always delivering quality



THE WHARF HOUSE

RESTAURANT WITH ROOMS



Full a la carte menu or try our
NEW Tasting Menu



All profits from
The Wharf House will be
used for the promotion
and restoration of the
Hereford & Gloucester
Canal.

01452 332 900

www.thewharfhouse.co.uk
Over • Gloucester • GL2 8DB

Turn off the A40 at traffic lights 250 yds west of Over Roundabout
(Junction A40/A417). GR SO 816197



Replacement Parts Cover

including Marine Breakdown & Recovery Service

**NOW AFTER YOU'VE BROKEN DOWN,
WE CAN PICK UP THE REPAIR BILL.**



- 24/7 Nationwide cover on all inland waterways
- Covers a huge range of specified parts, including the gearbox & drive plate, couplings, starters, alternators and many more +
- Pays up to a maximum of £1,000 per repair
- You can make up to 4 claims per year
- Excludes consumables such as cables, filters, rubber components and the like that require routine wear and tear replacement.

annual membership from only

£130

RCR 
KEEPING YOU MOVING

tel: 01785 785680
www.rivercanalrescue.co.uk

Restoration Team

Yarkhill

By Chris High

... at Burcott Road
(and Kymin East)

The previous reporting of the Yarkhill Team being back at Yarkhill was a little premature as its nomadic trait has been renewed with visits to the Burcott Road site, in Hereford, and work at Kymin East.

Four visits to Burcott Road have seen the cutting of considerable brush and the clearance of domestic rubbish and scrap metal. A further visit is planned to dispose of the cut brush.

The Team has recently contributed 39 man-days work on the Kymin East stretch: three Thursdays clearing and burning brush and moving wood to interim storage sites and assisting at a joint H&G volunteer weekend and Tuesday workdays with further brush and wood clearance.

Yarkhill site has not been left out. Cutting and burning of vegetation from the canal banks is well under way. The wood pile site has been tidied and the last of the larger logs disposed of in aid of H&G CT funds. Our excavator Sam has been brought back to good health and stump removal continued from the offside canal bank with 4 small stumps removed and a further 2 medium stumps started.

The cold weather and wind has slowed work and has made fires a near necessity. Old ply stripped from the large trailer, which is undergoing refurbishment, and accumulated brush provided some welcome warmth!

With warmer weather on the way, why not come and join us? As to at which site – well – I have got that wrong before, so we will have to wait and see!

CH

The Burcott Road site has been cleared once more.

Bottom: The cleared line of the Canal from Widemarsh Bridge.



Anyone interested in lending a hand? Please contact
Chris High 01568 615 575

Restoration Team

Oxenhall

By Brian Fox



The 'new' view from below the dam.

John Chappell and Brian Fox

This is essentially the time of the year when we review what has been achieved over the last year and make our plans for the coming one. Our work parties on Tuesday carry out essential work in order to maintain what has been restored and to ensure that the Canal does not revert to a wild state.

This winter we had no choice anyway as the weather has either been too cold or too wet to do anything else! Continuation of the strengthening work on the aqueduct will re-commence as soon as weather conditions are suitable. This in turn means that plans to remove the Bailey bridge have been put on hold.

The large area of brambles in our compound reported as cleared last time has now been levelled and seeded although I must say there is little sign of any grass shooting up yet! We have also levelled and seeded another area just outside our compound and sowed a few wild flower seeds amongst the grass. The mowers have all been serviced by our volunteers and

should be capable of keeping all of this new grass, as well as the old, under control. About 30 trees have also been planted around the site ranging from about 12 inches in height to 12 feet.

The land that the H&G C T owns at the old Willows nursery, adjacent to our compound, is now featuring more and more in our work programme and that also involves keeping unwanted vegetation under control. It is used generally as a temporary storage area but there are several mature alder and sycamore trees in and around here and every year seedlings are deposited on the adjacent ground. If left unchecked these grow at a phenomenal rate and some years ago, when we first acquired the site, we removed dozens of small saplings which were taking over. This winter has seen another purge on self seeded trees that will be in the way of our future work and some as old as 10 years (counting the rings) have been pulled out by the tractor and burned and the bigger stuff sold on as logs. Take a look at the (above) photo and see if you can identify the mystery object

Mystery object? Metal container about 18 inches high and completely sealed. A handle on top and 2 wires protruding next to it. Weight about 50lb!

which we discovered as we cleared the brambles in the old nursery site?

A new poster promoting the H&G Canal has just been

Mystery object?

released and it features the well known picture of Oxenhall Lock Cottage taken by someone standing on top of the dam which was created to retain the water in the section of the Canal in the foreground. If the photographer had turned around he would have been greeted by a jungle of small trees, brambles and stinging nettles; certainly not a good advertisement for our work! This has now all been cleared

revealing ground which has not been seen for years and has enabled another photo of the lock, taken from below the dam, showing the spillweir and the stream running away from it down towards the aqueduct (on p.32).

Planning is now in hand for our next project which involves the spillweir next to the Cottage. Readers may recall that it was partially reconstructed last year but this has proved unsuccessful and it will now be demolished and completely rebuilt to ensure that it stands up to the rigours of the task. This and the continuation of the aqueduct strengthening should keep us busy for the summer months.



BF

Would you like to join our team at Oxenhall? Please call **Brian Fox** on **01432 358628**

Mystery photo: ... a storage heater surrounded by small stones! Inside is a wire heater element for the old nursery -

ACER TREE SERVICES

Web: www.acertreeservices.com

Tel: 01432 860839 Mob: 07774 134 577

email: joe.brandt@btconnect.com

ALL ASPECTS OF
WORK MANAGED TO
BS STANDARD
3998/2010

ALUMHURST'S PORK & TWO VEG



www.porkandtwoveg.co.uk

email: joe.brandt@btconnect.com

Tel: 01432 860839 Mob: 07774 134 577

RARE BREED FREE RANGE PORK



Model Boat Club

By Ted Tedaldi

Sailing at Over has been very varied, with a couple of iced off days and, of course, some rained off days. However, all is not lost as our Wednesday and Sunday sailings have been well attended.

Wednesday sees the Hereford contingent, of about six members, sailing various craft; they join the usual Gloucester crowd. We do have to contend with ducks! Sam, who looks after the duck, even wraps him up to keep him warm. Don't worry, this is a modified decoy duck fitted with a motor, radio control and a turning head!



Sam with his modified decoy duck, wrapped to 'keep warm'.



Above is a model of Benarty VI, built by Trevor (right). 'A truly splendid model'.



Sandra and Ted Tedaldi

The motor vessel "Benarty VI" (of The Ben Line) was built in the Dundee Yard (No. 534) of The Caledonian Shipbuilding & Engineering Co Ltd in 1962. 10,294g ton, 509 feet long, 67 foot beam it could not quite make the trip to Over Canal Basin! Trevor, from Hereford, fell in love with the vessel and has built a 1/96 model 1/8"-1ft. She comes out at 64" overall with an 8" beam. She is built from scratch from original drawings; the hull is plank on frame construction. A 12volt motor with a 6-1 gearbox drives a 2" four blade brass propeller. She had eighteen cranes and derricks and was the first vessel to carry forklift trucks. A truly splendid model.

The Micro Magic Racing (small yachts

about 18" long) attracted thirteen entries in one heat. We might have to widen the Canal! In a good wind excellent racing was had with member Barbara winning again and also winning the Winter Competition. Her handicap will certainly be pulled for the summer series!

Each session somebody usually sails a power boat the length of Canal, takes a rest at the winding hole and returns. On Wednesday March 13th Mike N sailed a 1metre triple crown yacht (scratch built in timber from plans) along the length. The cold wind was from the north providing a good side wind along the Vineyard Hill stretch with a tail and headwind elsewhere. Mike left with a grin on his face as the first to achieve sailing end to end.

♦ TT

News from the friends W of Gloucester M MUSEUM By Chris Witts

As I sit down to write my regular report of life at Gloucester Waterways Museum I am thinking of what lies ahead as opposed to what has happened recently! The weather hasn't changed – still that cold easterly wind, putting a damper on outside activities, especially on the water. That could all change though for we at the Museum are holding our annual Boat Jumble shortly after I write this; the forecast is for a hot, sunny day. If that should be the case then we could have many people wanting to enjoy a visit to the Docks.

Something else we are waiting for is to know if the Museum has been fortunate enough to obtain the Lottery grant which was submitted some time ago. Always a nail biting

time but to secure that funding would make all the difference.

It is almost a year now that the Canal & River Trust has been in charge and certainly at the Museum we have felt a change. Most admit to a change for the better and this week I saw something which lifted my spirits. Wednesday is a busy day when a large number of volunteers appear to help. This week I saw each one arrive wearing their new green CRT sweatshirts. What a difference that makes and as one of them said to me, "We feel as though we belong here now and are able to walk around the Museum with pride talking to the visitors with confidence."

So as I started, we look to the future with confidence and in my next report I hope I can report some good news about our lottery bid?

◀ CW

Maggie Jones reports on the H&G Canal Sales & Promotion display at the Waterways Museum's Boat Jumble – see p.17



Tina Beagles

IWA The Inland Waterways Association

**Gloucestershire & Herefordshire
IWA Branch**

(Venue yet to be confirmed), 7.30pm

Thurs. 5th September – THE RIVER AVON by Clive Mathews,
General manager of Avon Navigation Trust & South Wales & Severn Partnership.

Thurs. 3rd October – WILTS AND BERKS CANAL by Chris Coyle

Further details contact: **Roger Holmes 01594 840316**

In the news ...

In the past year the H&G CT has featured regularly in the national waterways press and in a wide range of papers within both counties – with a number of items also being carried on local radio. A couple of brief television visits to THE WHARF HOUSE – including a live interview with David Penny on the Sky lunchtime business news regarding local businesses that were succeeding in difficult economic times – added to what was a good year for positive media coverage.

Canal Boat, Navvies (the national magazine of the Waterway Recovery Group), Tillergraph, Towpath Talk, Waterways World and a number of the local papers featured the opening of the new length of the Canal at Vineyard Hill – enhanced by the excellent aerial photographs kindly provided by one of our neighbours at Over Canal Basin, Monica and John Hamer. The photographs of Prunella Scales and Timothy West unveiling the plaque and of Jason Pullen (MD of Peel Holdings [Management] Ltd) cutting the ribbon also received wide exposure.

The new length of Canal at Kymin East has also been the subject of considerable media coverage both locally and nationally, in its own right and as a result of its being the location of the highly successful WRG national reunion weekend in November.

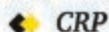
Our partnership in Dymock to provide much needed affordable housing and community facilities, together with a short



but key section of the Canal, has been widely reported with the eventual Planning decision attracting some eye catching headlines – “Controversial Canal Plan Approved”. (Report on page 6).

Amongst the mass of useful and interesting information within the Waterways World Annual 2013 is the annual review of some 60 active restoration schemes in England and Wales. Last

year we featured in their ‘top ten’ listing of “Canals of the Future” – this year only six have been brought to the fore – one of which is the H&G Canal. The title block for the whole feature includes a large photograph (that occupies two thirds of the first page) of work on the Vineyard Hill stretch at Over.



Working with Nature

Campion

By John Chappell

Both White and Red Campion are commonplace plants, so common in fact they are often overlooked. Either plant could well deserve a place in the garden; there are plenty of less colourful plants sold!



John Chappell

A few years ago at the Chelsea Flower Show a double form of Red Campion made its debut; named 'Firefly', it caused quite a stir amongst the gardening fraternity. Both these wild Campions flower between May and August; the pictures were taken at Oxenhall in early June. A hybrid between the two occurs which, unsurprisingly, is pink and flowers about a fortnight later.

Botanically the plants belong to the Caryophyllaceae family, as do pinks and carnations. White Campion is *Silene latifolia*, and the red *S. diocia*. The generic name, *Silene*, probably derives from the Greek 'sialon', meaning saliva, which the plants exude to ward off insects; this is a sticky substance leading to the common name 'catchfly'.

To describe the other obvious feature of *Silene* I shall have to get a bit botanical! In all flowers the calyx, a collection of green petal-like structures called sepals, protects the emerging flower bud. After flowering, plants usually have no more use for the calyx and it withers away. In the case of *Silene* the calyx is retained and develops into a bladder which protects the seeds. A different species, the common *S. vulgaris*, is called the Bladder Campion, because the bladder is very pronounced. I have never seen it at Oxenhall. The *Silene* referred to here have no medicinal use.

I think it worth mentioning that all the pictures I have used in the series over the past five years were taken by me on site at Oxenhall. The keen eyes and careful management of our volunteers show how canal restoration can proceed 'working with nature' throughout the seasons. ♦ JC

Sailing4Disabled at Over Basin

The club now meets
every Tuesday
between 11am and 2pm
at Over Canal Basin
and it is open to anyone –
whether they have
a disability or not.



NEW from

H&G Canal Sales & Promotion



Wooden Stepping Stones

Pre-cut discs of seasoned wood, suitable for making a path or single stepping stone in your herbaceous border or across the lawn. Different depths available on request.

Two sizes:

large **£6.00**, medium **£4.00**.

Three for **£16.00** (large), **£10** (medium)

DIY Kit: Willow Obelisk

A DIY kit containing the willow withies and complete instructions required to make one garden obelisk. Make your own unique plant supports from willow grown beside the H&G at Over.

£5



THE OAK INN

Staplow HR8 1NP

01531 640954

A VERY WARM WELCOME AWAITS YOU AT OUR NEWLY REFURBISHED INN
OPEN FOR LUNCH AND DINNER EVERY DAY IN OUR COSY BAR AREAS OR RESTAURANT
GOOD SELECTION OF REAL ALES - GOOD BEER GUIDE 2009 & 2010

REAL LOG FIRES, FLAGSTONE FLOORS, OLD BEAMS & HOPS
PRETTY BEER GARDEN ~ PARTIES CATERED FOR ~ DOG FRIENDLY
THE ONLY PUB IN HEREFORDSHIRE THAT ABUTS THE LINE OF
THE HEREFORD AND GLOUCESTER CANAL

FOUR EN-SUITE B&B ROOMS NOW AVAILABLE
www.oakinnstaplow.co.uk



Not quite
... the last page!

STAMPS = ££££'s

Steve Bence, who masterminds our stamp collection appeal, reports that an anonymous person left an enormous amount of stamps (6 or 7 large carrier bags crammed full of stamps!) with one of our members in Hereford. This has given him some great material to work with. *Our thanks to that kind person and to those other members who have also donated stamps recently.*

These stamps are turned into cash for the H&G CT's **Land Fund** (for further details of the Land Fund please see page 27). It doesn't matter if they have already been used, or if they are everyday first or second class stamps; – **together** we can collect enough to raise ££££'s. Please cut the envelope leaving approximately 1cm of envelope bordering each stamp. We can raise even more money from overseas stamps, first day covers, presentation packs and stamp albums.

Stamps can be taken to a Social Evening or other H&G CT event – or to ^{THE} WHARF HOUSE.

Or please send them direct to:-

H and G Stamps, c/o Steve Bence,
35 Lime Road, SOUTHAM,
Warwickshire, CV47 1EQ

Our repeated thanks to all present and future collectors – together we can make a difference!

Thank you.

**Please support our advertisers –
SUPPORT OUR SUPPORTERS**

COPY DEADLINE FOR THE NEXT ISSUE

MONDAY 1ST JULY

Look H&G smart - be safe



This H&G PPE (*personal protective equipment*) is readily available to all our volunteers offering them protection whilst working on all of our restoration sites throughout the two counties. If you are a regular volunteer on one of our sites please make sure you have and use the free yellow hard hats and hi-vis waistcoats.

Distribution of The Wharfinger

For many years one of the roles that Janet Moulton has undertaken is as our 'Postmaster', taking delivery of **The Wharfinger** from the printers and then ensuring that it is speedily enveloped and on its way to all our readers both near and far.

The steep rise in postage rates has made the work of those volunteers who deliver **The Wharfinger** even more valuable to the Trust. Whilst the H&G CT has Members all over the country (and abroad) it is possible to reduce our postage bill considerably within the two counties as nearly all the villages are now covered by our delivery volunteers, together with all the WR postcodes and large parts of the cities of Hereford and Gloucester.

I have discovered new areas of the two counties in delivering to these stalwarts – I must admit that some of the lanes I have to negotiate have been 'interesting' during the recent bad weather! Welcome cups of tea and a chat make for a pleasant few days out and about and many miles on the car (at no cost to the Trust).

Thank you all for continued support.

◀ JM

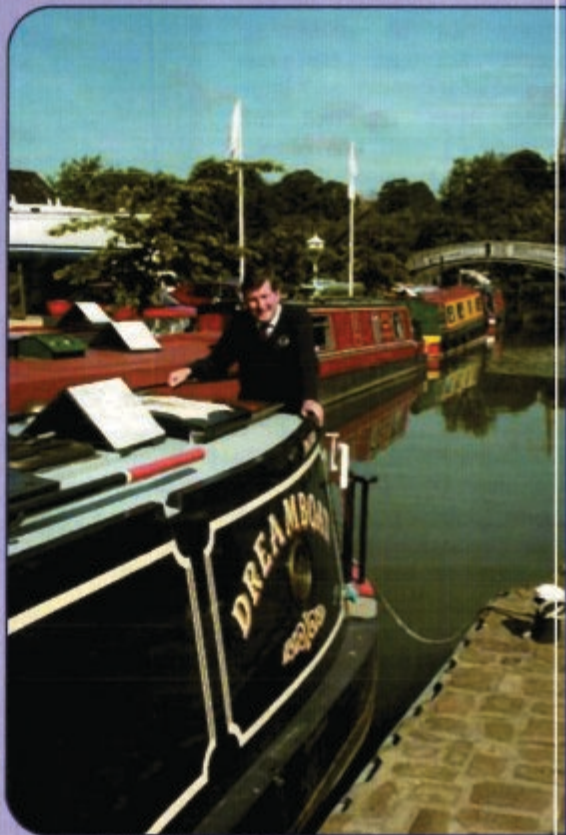
Buying or selling your DREAMBOAT?

*Then make Braunston Brokerage
– at the heart of England's
waterways – your first port of call!*

*Established in 1988, we are
a major player in the selling
of narrowboats – new and
secondhand – with a
reputation for professionalism
that is second to none.*

*Our marina offers the fullest
range of support services.
Uniquely, we have two dry
docks on-site for surveys,
hull-blackening, repaints, sign-
writing and below waterline
repairs. Also engineering and
refit facilities.*

*Sell your Dreamboat
where it will be seen!*



For full information – including our
competitive brokerage package –
contact Tim Coghlan at:

Braunston Marina Limited, Braunston,
Nr Daventry, Northants NN11 7JH
Telephone 01788 891373
Fax 01788 891436

Website: www.braunstonmarina.co.uk
Email: sales@braunstonmarina.co.uk

Want to help?

The Canal Trust is always in need of new volunteers as our activities continue to expand. We can normally find a use for any skill from gardeners to first aiders, brickies to those willing to help with a shovel or pen.

Contacts

Contact any of these names TODAY!

Ralph Barber

Brick House, Westhide
Herefordshire, HR1 3RG
Tel: (01432) 853 086
ralph.barber@btinternet.com

Liz Connors

18, St Ethelbert Close,
Sutton St. Nicholas,
Hereford, HR1 3BF
Tel: (01432) 880 155
liz@lizconnors.orangehome.co.uk

Cliff Penny

"Coppice", Burley Gate,
Hereford, HR1 3QS
Tel: (01432) 820 866
canal@penny-ep.co.uk

David Penny

Tel: (01452) 332 900
david@thewharfhouse.co.uk

Nigel Jefferies

Two Hollylea Close, Bartestree,
Hereford, HR1 4DN
Tel: (01432) 850 661
ncjefferies@talktalk.net

Wilf Jones

Tel: (01452) 413 888
wilfred.jones@homecall.co.uk

Brian Fox

Tel: (01432) 358 628
brianfox@talktalk.net

Ted Beagles

Tel: (01452) 522 648
tedbeagles@blueyonder.co.uk

Maggie Jones

Tel: (01452) 618 010
maggiejones@blueyonder.co.uk

Chris High

Tel: (01568) 615 575
chris@chrishigh.plus.com

Paul Henshaw

Tel: (01684) 292 997
paulhenshawuk@yahoo.co.uk

Martyn Tilford

Tel: (01452) 790 358
martyn@tilford.free-online.co.uk

Peter Moore

Tel: (01531) 820 671

Wally Thrush

Tel: (01989) 750 235
wallythrush@btinternet.com

H&G Sales and Promotion

Mail Order Sales,
Janet Moutt
18, Coningsby Court,
Coningsby Street,
HEREFORD, HR1 2DF
Tel: (01432) 264 366
jmoutt@tiscali.co.uk

Want to Join?

Please support our voluntary work by becoming a Member of the H&G CT.
A membership form is available online or from THE WHARF HOUSE.

UK Membership Rates

	Annual	Life
Individual	£10	£200
Joint/Family	£15	£300
Senior Citizen	£7.50	£115
Joint Senior Citizen	£10	£150
Corporate	£25	£500

PLEASE NOTE: All subscriptions and donations are treated as being made under the Gift Aid scheme unless you state that you do not wish us to do this. Payment made by Standing Order greatly assists us and payment remains under your control. All payments to: 6, Castle Street, Hereford, HR1 2NL

Unless specifically stated opinions expressed are those of the author and do not necessarily reflect the policy of the Herefordshire and Gloucestershire Canal Trust. As a Registered Charity, with defined objectives, we cannot endorse the content of any specific advertisement, product or services. The Trust accepts no liability for any matter, or advertising, contained in this magazine. Reproduction of extracts from the magazine is welcomed provided that full acknowledgment is given.

Membership records are computerised. Your entry is available for inspection if you send a SAE to the Membership Secretary.

Whilst we try to ensure dates are correct please verify them with a relevant Organisation.

© 2013 Published by the Herefordshire and Gloucestershire Canal Trust.

The Wharf House Company Ltd [No. 4627931] is part of the Herefordshire and Gloucestershire Canal Trust Ltd. group of companies. The Herefordshire and Gloucestershire Canal Trust is a non-profit distributing company limited by guarantee [No. 2704407] and is a registered charity [No. 1010721].

Registered Office: The Wharf House, Over Canal Easin, Over, Gloucester, GL2 8DB.

Visit our Website

www.h-g-canal.org.uk



Advertising in The Wharfinger

Show the support of your business by advertising in The Wharfinger. Rates from £45 per issue and we will gladly design your advertisement free of charge.

Contact The Wharf House.

Tel. 01452 332 900

ADS@h-g-canal.org.uk

The Wharfinger

The Herefordshire & Gloucestershire Canal

Work started in 1792 and reached Ledbury from Gloucester by 1798. In 1827 Steven Ballard was appointed to oversee completion of the canal, eventually reaching Hereford in 1845, making this one of the last major canal routes completed in Britain. The canal stretched for 34 miles from the River Severn at Gloucester, via Newent, Dymock and Ledbury to the city of Hereford, with some 22 locks and 3 tunnels. It was formally closed in 1881 to allow construction of the Ledbury to Gloucester railway which in its turn was closed in 1964.

The Canal Trust

The Canal Society was formed in 1983 and in 1992 became the Herefordshire and Gloucestershire Canal Trust, a registered charity. The Trust has an ordinary and corporate membership of some 1,300 from all over the country and abroad!

Our objective is to fully restore the 34 mile Canal, from its connection with the 2,500 mile inland waterway network at Gloucester to the centre of Hereford. We have major restoration sites in each county, which together extend to some 4 miles.



= Canal Walk leaflet available.



= restoration sites suitable for public access.

Gloucester Quays

Pleased to support the H&G Canal



Map based on original by Martin Ludgate, Canal Boat Magazine.