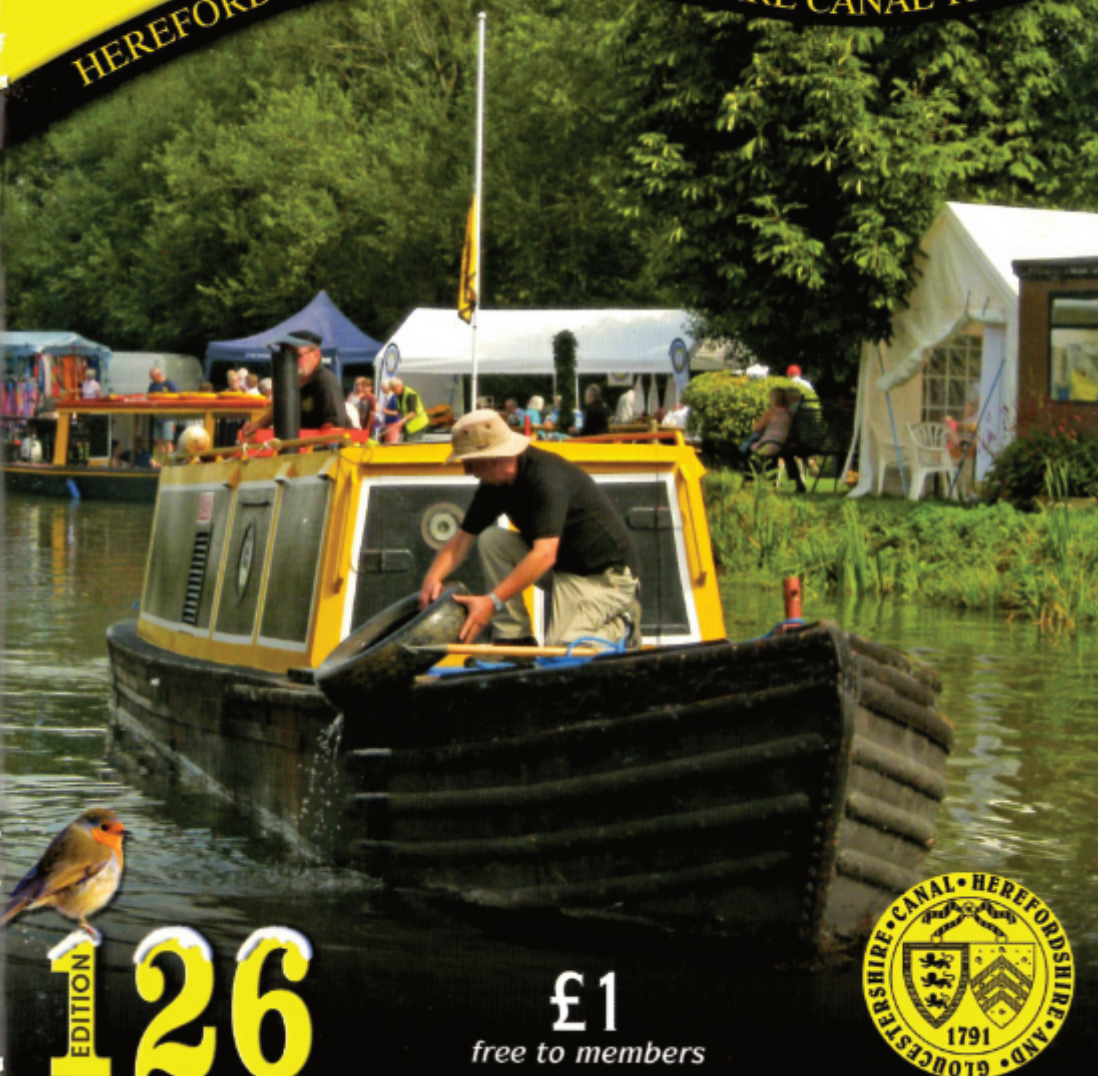


The

Wharfinger

Winter 2015-16

HEREFORDSHIRE & GLOUCESTERSHIRE CANAL TRUST



EDITION
126

£1

free to members



Working together in the present to revive the past and secure a better future ©

REBUILDING A SUSTAINABLE CANAL BETWEEN HEREFORD & GLOUCESTER

Who does what ...

To get in touch see "Contacts" inside the back cover.

Vice Presidents:

R. E. Barnes TD, Richard Graham MP, Mark Harper MP, Duff Hart-Davis, James Hervey-Bathurst CBE DL, Sir John Lushington Bt, Jesse Norman MP, Diana Organ, Tim Parker, Bill Wiggin MP

Council of Management:

Chairman: Janet Moulit

Vice Chairman/Treasurer: John Hammond

Company Secretary: Carolyn Pascall

Committee: Nigel Jefferies, Caroline Jones, Maggie Jones, Wilf Jones, Cliff Penny, David Penny, John Pritchard

Finance:

Chairman: John Hammond

Committee: Paul Henshaw, David Penny

Minutes: Carolyn Pascall

H&G Canal Sales & Promotion

Hereford: Janet Moulit (Chairman), Barbara Moses, Ray Moses, Penny Shetliffe, Pat Skeet, Derek Weaver, Heather Worth

Gloucester: Andy Fowler, Maggie Jones, Pat March, Carolyn Pascall

Health & Safety

Wilf Jones

Membership services

Secretary: Nigel Jefferies

Gift Aid: Janet Moulit

Support to Council of Management

IWA Branch Liaison: Maggie Jones

Website Development

Team Leader: Maggie Jones

Web Master: Nick Dymott

Committee: Ted Beagles, Carolyn Pascall

Digital Photos Archive: Colin Dymott

Social Events:

Organiser: Janet Moulit

Support: Nigel Jefferies, David and Sheila Walslow

Talks and Walks

Co-ordinator: Nigel Jefferies

HEREFORDSHIRE & GLOUCESTERSHIRE CANAL TRUST

Working together in the present to revive
the past and secure a better future.®

Restoration Sites

Restoration Chairman: Wilf Jones

Aylestone

Site Leader: Brian Fox

Kymin East

Site Leader: Wilf Jones

Yarkhill

Site Leader: Chris High

Deputy: Paul Hatt

Oxenhall

Site Leaders: Brian Fox, Geoff Hopper

Newent (Sat)

Site Leader: Wilf Jones

Moat Farm

Site Leader: Martyn Tilford

Vineyard Hill

Site Leader: Ted Beagles

Over

Site Leaders: Ted Beagles (Wed) Maggie Jones (Sat)

Llanthony

Site Leader: Paul Henshaw

Publicity and Communication

Carolyn Pascall

Press Liaison

The Wharf House, Carolyn Pascall

The Wharfinger

Editor: Cliff Penny

Deputy Editor: John Hammond

Design/Production: Maggie Jones

Advertising: Carolyn Pascall

Distribution: Janet Moulit, Barbara Moses

THE WHARF
HOUSE

DONATING ALL
PROFITS TO THE
CANAL TRUST

Over
Gloucester
GL2 8DB

Waterside Restaurant, Tea Rooms, Visitor Centre, Superior B&B,
Telephone 01452 33 2 900 www.thewharfhouse.co.uk

Chairman: John Hammond

Committee: Paul Henshaw, Janet Moulit, Carolyn Pascall

Commercial Director: David Penny

Assistant Business Manager: Almee Genders

Accounts: Kerianne Genders

Legal & Project Development Team

Commercial & Technical Director: David Penny

Legal: Catrina Crimp

Legal Advice: Nigel Johnson, Roz Rutter,

Simon Freeman, No.5 Chambers

Business Development: David Penny, Almee Genders

Planning Consultant: Green Planning Studio

Engineering: Thomas Ashworth, Tony Gee & Partners

Delivery co-ordinator: Wilf Jones

Quantity Surveyor: Tony Kelley

Tribute to Liz
Connors.



Sailing4Disabled
at Over Festival.



Over Festival
2015 report.



Work at the
Newent
Station site.



Sir Steven
Redgrave?



Oxenhall volunteers escape to
the Pontcysyllte aqueduct.



Contents

page

- 3** Editorial: Working together
- 4** "A CoMBination of Responsibilities"
- 6** Elizabeth Ann Connors
- 7** A Remarkable Person
- 9** L&PDT News
- 9** Grand Holiday Draw 2015 Results
- 11** Mill Barn Appeal
- 12** Dymock
- 11** Llanthony Lock Cottage Act Now!
- 14** New Weekend Team at Newent
- 16** Newent & Oxenhall Open Day/
Embankment
- 18** Over Festival Report
- 20** Gift Ideas from The Wharf House
- 21** Social Evenings at The Royal Oak
- 23** The Wharf House Rosette/
Winter Opening Times
- 24** Restoration Update – Yarkhill
- 25** Restoration Update – Newent and
Oxenhall
- 27** Restoration Update – Moat Farm
- 30** Restoration Update – Over Basin
- 31** Restoration Site Contacts
- 32** Restoration Update – Llanthony
- 34** News from the Friends of
Gloucester Waterways Museum
- 34** IWA Social Meetings and Events
- 35** Salt
- 36** Model Boat Club at Over
- 37** Sailing4Disabled
- 38** Nature Watch Spotlight on Moat
Farm
- 39** Not quite the last page!
- 39** Advertising in The Wharfinger

Cover image: Heritage Boat Alder at Over
Festival – Barry White.



BETA MARINE

10 - 99hp

- **Robust Reliability**
from our world beating engines!
- **Smooth low speed running**
as standard with our heavy flywheel
- **Two alternators are standard**
- high output when cruising
- **230 Volts option for your washing machine, microwave, etc**
- **Excellent technical support and service with a 5 year warranty**



Green Line

www.betamarine.co.uk

Tel: 01452 723492 Email: sales@betamarine.co.uk



Editorial by Cliff Penny

Working together

Many of our readers will already know the very sad news that our long-term Treasurer, and well respected colleague, Liz Connors passed away in August. (*Obituary and Tribute pages 6-8*).

When Liz joined the H&G Canal Society Committee (as it was then) 25 years ago our well-known 'past-present-future' motto was already well established - "Working **together** in the present to revive the past and secure a better future."[©] As our hard working and dependable Treasurer for the past 25 years Liz truly deserves to be remembered for making such a significant contribution to "secure a better future".

Dick Skeet, writing in '**Rescued from Obscurity**' (surely a 'must' to add to your Christmas gift list - see page 20) remarks that it was not until 2013 that our long-standing motto on the front cover of **The Wharfinger** was joined by our objective "Rebuilding a sustainable canal between Hereford & Gloucester". This came about as a 'fresh pair of eyes' pointed out that we should not assume that everyone picking up a copy of **The Wharfinger** for the first time (or reading an event poster) would immediately realise, from the motto, what we were doing. *To the uninitiated, who hadn't read the magazine, it was not immediately obvious that we were actually working to restore all of the H&G Canal.* But why do we need **both** an objective and a motto? Well, in the spirit of this Editorial and the motto, they work *together*. One tells readers *what* we are doing and the other *how* we go about it!

The H&G CT Council of Management have been reviewing how we manage the relationship and allocation of responsibilities between the various parts of the organisation. In his regular CoMment article (page 4) our Vice Chairman, John Hammond, explains how our expanding and somewhat complex internal structure covers this and how the CoM have ensured appropriate systems are in place to effectively manage the growing enterprise - how we are all working *together*.

The Wharfinger plays a vital part of our work in promoting and publicising our voluntary work on the H&G Canal as well as keeping Members and supporters informed. Part of my objective, as Editor for the past 25 years, is to ensure that our magazine retains its reputation, as one of the leading voluntarily produced waterways magazines in the UK. This isn't achieved without help! For the past 14 years Maggie Jones has played a vital role assisting me on the design and production side. My thanks to her and the rest of **The Wharfinger** team and our many regular contributors who, together with our distribution volunteers (led by Janet Moulton, 12 years in this role!), are all working together to bring you each issue. *Thank you to you all.*

»» **CRP**

*We wish all of our Readers a Happy, Healthy Christmas
and a Prosperous 2016*

“ A CoM bination of responsibilities: ” how the structure of H&G CT works ... a perspective from Council of Management

by John Hammond

As H&G CT has developed over the years its internal structure and the connections between the various aspects of our work have evolved in a pragmatic way to make the most effective use of our resources, in particular the energy and skills of individuals and groups and their commitment to specific projects.

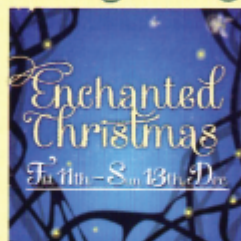
In most respects this has been a recipe for success, and informal arrangements have worked well. As the range of our activities has grown and their complexity has increased, the value of setting on record some of these vital relationships has become apparent.

The formal status of H&G CT is both a registered charity and a company. CoM acts as the Board of Trustees for the charity and as the Board of Directors for the company, and it has formal responsibilities of Corporate Governance to both the Charity Commission and Companies House for the actions of H&G

CT. Of course, the members of CoM do not carry out all the actions of H&G CT, so most of these and the associated responsibilities are delegated to other parts of our community.

The most significant and distinctive parts of our community with their own roles and responsibilities are the Teams of Restoration Site Volunteers, the Sales & Promotion Teams, the Legal & Project Development Team and The Wharf House Co Ltd. CoM's review focused particularly on the last two of these and their relationships with CoM.

THERE'S SO MUCH TO **SEE AND DO**
Perfect for great days out



WATCH OUT FOR MORE EXCITING EVENTS IN 2016

Gloucester Quays

Fashion, Food & Film

gloucesterquays.co.uk



TWH Co Ltd

CoM established TWH Co Ltd in 2003 as an independent company wholly owned by H&G CT, a condition being that all profits will be used for the promotion and restoration of the H&G Canal. The company's operations are overseen by TWH Board. In addition to running the restaurant and rooms business at TWH, the company has responsibility for developing and maintaining the Over site which includes the Leaden Valley section of the Canal corridor as far as Barber's Bridge and the fleet of boats at Over Basin. In 2013 TWH Co Ltd took on responsibility for the operation of Travellers Rest, now Malswick House.

CoM has reviewed its relationship with TWH Co Ltd, which has generally worked well, and resolved to put on record the established position.

L&PDT

The L&PDT has evolved over the past few years to meet the needs of the increasing range of negotiations with local authorities, landowners and other bodies which are essential to the next steps in achieving our objective to rebuild the Canal and to secure its future. In addition it addresses areas where specialist expertise is needed, including legal, engineering, architectural, quantity surveying, planning and project management; it handles grant applications; and it carries out many aspects of administration on behalf of H&G CT.

To enable L&PDT to fulfil these roles it has recruited the services of several specialists on a volunteer basis, in some cases as a form of corporate sponsorship by their employers, and it has employed staff for legal and administrative functions. For pragmatic reasons it is accommodated in a small office in the roof space of The Wharf House and its costs are met from the surplus generated by TWH Co Ltd. The intention is that it will move to Mill Barn as soon as that is built.

The practice was established informally from the start that L&PDT reported its activities to CoM and sought CoM's agreement for any significant proposed actions. This has generally worked well, and CoM has now passed a resolution to detail and formalise the relationship.

CoM

In addition to its overall responsibilities in relation to TWH Co Ltd and to L&PDT, CoM recognises it also holds direct responsibility for all other aspects of H&G CT. These include:

- sound financial arrangements and appropriate insurance including public liability;
- leadership in communicating the vision and achievements of H&G CT both internally and externally;
- monitoring and setting standards and priorities for restoration sites;
- recruitment of site and other volunteers and provision of suitable equipment and facilities;
- fund raising;
- publicity and promotion of H&G CT locally and more widely;
- recruitment of members and provision of services for members;
- maintenance of a set of policies and procedures which protect the interests of H&G CT, including health, safety and welfare, and monitoring of practice to ensure compliance.

Responsibility for many of these tasks is delegated to individuals and teams within our community. The range and extent of the associated demands means that we are always in need of more help. If you already volunteer, can you do more? And if not, how about offering to do your bit? You would be made very welcome. The more we can work together, the swifter will we achieve our objective.

» JH

Elizabeth Ann (Liz) Connors

It is with great sadness that we report that our long-term Treasurer, and well respected colleague, Liz Connors passed away peacefully at the County Hospital in Hereford on 17 August aged just 55 years. Few outside the Council of Management of the H&G CT would have been aware she had been fighting a determined battle against a malignant brain tumour for the past eight years.

After a private Family Service of Committal at Hereford Crematorium a Service to Celebrate Liz's Life was held at St Mary Magdalene Church, Eardisley, Herefordshire - the village being her family home. The request that people wear colourful clothing very much reflected Liz's outlook on life both before and during her illness. The church was packed to capacity with family and friends as well as friends and colleagues from the H&G Canal Trust and her employers Cargill Meats Europe.

One of our former Chairmen, Dick Skeet, paid tribute to Liz on our behalf and was joined by work colleague Anne Walker and her brother Andrew Wood. Together they left everyone attending in no doubt that Liz was very highly regarded both in her senior role at work and in her voluntary work and would be sadly missed by so many who had fond memories of her. The manner in which she had continued so positively with her various roles and day to day activities whilst her health was repeatedly under threat was quite remarkable.

Our sincere condolences to Liz's parents Ann and Rodney Wood and to her brothers Andrew and Steve and the rest of her family - our thoughts have been with you throughout this most difficult time.

» **CRP**



Liz, in green, enjoys a walk at Yarkhill.



IWA dinner at The Wharf House.

A Remarkable Person

by Cliff Penny

When the (then) annual National Waterways Festival came to Gloucester in 1990 the former H&G Canal Society mounted by far its largest ever display to date.

It was a highly successful event with 100 new Members gained, thanks to a 'spare' enclosed area of the festival site behind our paid-for marquee which was swiftly 'adopted'. Unused tables and chairs were 'acquired' without charge to give us the only rest area with tea and coffee laid on for weary visitors! Among those resting, reading about us and 'signing up', were a Miss Elizabeth Wood and her friend Roger Connors. As time would tell Liz was a great believer in our resourceful approach to promote the interests of the H&G CT whenever and however we could – especially if it didn't cost anything!

A month later, at the Society AGM, the writer (as the current Chairman) thanked our Treasurer, who was moving from the area and said we would also welcome more members on the committee. Liz perhaps foolishly asked what the role of Treasurer involved . . . that was close enough to volunteering for us! After a post-meeting discussion Liz agreed to be co-opted and to take on the role. After all, as she remarked at the time, it was (then) a relatively simple task!

During the 25 years that Liz was our Treasurer the scope of her responsibilities expanded exponentially. From an unregulated Society with an annual turnover of a few hundred pounds per annum, to a highly regulated Charity and two Limited Companies with a combined multi-thousand pound turnover, Liz

diligently and effectively undertook her voluntary responsibilities as Treasurer. In 1992 Liz also readily took on the role of Company Secretary of both the H&G Canal Trust and our then Trading Company as well as, subsequently, Company Secretary of The Wharf House Company. She developed strong ties with the Inland Waterways Association liaising in detail in respect of ever expanding and complex insurance requirements as well as undertaking regular liaison with the Charity Commission. All of this relentless, demanding and time-consuming voluntary work was cheerfully undertaken by Liz in addition to her equally demanding and increasingly senior 'day job' with Sun Valley Poultry (now Cargill Meats Europe) in Hereford. Somehow Liz also managed to squeeze in time to be Chairman of the Wye Valley Miniaturists, a group of 35 local enthusiasts. She had a fascination and attention to detail in everything in miniature including an ever growing collection of unique and highly detailed dolls houses.

For many years a notable part of the H&G CT's AGM has been Liz's illustrated guide to the accounts. As Dick remarked perhaps the only giveaway that Liz wasn't a qualified accountant was the fact that her various colourful pie and bar charts were both informative and interesting! Each year she reminded all those attending that she very much liked taking money but was far less keen to spend it – as everyone involved can testify Liz treated H&G CT funds as if they were her own and woe betide any of us who failed to follow financial procedures. Her strict control was however accomplished without rancour as her consistent and equal treatment of all swiftly gained the respect (and compliance!) of everyone who knew her.

In June 1991 Liz and Roger married.

Together with their much loved golden Labrador 'Ollie' they frequently hired narrowboats and explored many parts of the inland waterways system. In later years this was curtailed as sadly Roger was increasingly unwell and sadly died in August 2006. Even during this difficult period Liz continued with her voluntary duties without significant interruption. A few months later Liz became increasingly unwell and it was at first thought this was directly (and understandably) connected to the trauma of nursing Roger at home.

In the spring 2007 edition of *The Wharfinger* we reported the sad news that Liz's condition had become much more serious and that she had been transferred to Birmingham where she underwent lengthy and risky neurological surgery for a brain tumour. Remarkably by the next edition we were reporting that Liz was back and very keen to pick up her many roles as Treasurer. Determination is hardly an adequate word!

Due to the nature of her operation Liz's driving licence was suspended and Janet Moulton (who had temporarily taken on most of Liz's voluntary work for a number of months) kindly undertook trips to the bank and frequently drove Liz to meetings and other events. Subsequent periods of treatment resulted in further lengthy driving suspensions and Janet assisting with transport. Liz took to her bike and her charity fundraising walks seemed never ending!

In the past year there was a significant downturn in Liz's health and the prognosis was not good. A course of chemotherapy was started but did not have the desired effect so was discontinued. Throughout this time Liz insisted on continuing to work at home – both for Cargill and the H&G CT.

As a clear demonstration of Liz's determination not to be beaten she

attended the H&G CT AGM in July. Clearly very reluctantly she announced her health-enforced resignation from the post of Treasurer – adding that she was intending to continue to attend the CoM and would be keeping a very close eye on the accounts! True to her word Liz attended the July CoM meeting and only the week before her death she and Janet were amongst the first customers to have lunch at Malswick House.

Liz was truly committed and determined to do a job well. Whilst a number of roles within the H&G CT are very demanding those undertaken by Liz led to a relentless voluntary workload, with regulatory deadlines and responsibilities, that she willingly enthusiastically and effectively undertook for the past 25 years. During that time 8 different H&G CT Chairmen came to appreciate that everything financial (and much else) was in safe hands thanks to a truly remarkable lady who, despite many setbacks in her personal life, was determined to play a significant and effective role in the work of the H&G CT.

CoM are giving careful consideration to a lasting tribute to Liz in recognition of the undoubted major role that she played from the outset of the Canal Trust, with a handful of others, in shaping and maintaining the reputation as a credible and professional voluntary organisation. In the whole spirit of her guardianship of the funds, it will need to be appropriate for the task and not call on monies that might otherwise have been spent on advancing the restoration of the H&G Canal.

CoM wish to place on record their appreciation of the immense support and assistance that Janet Moulton gave to Liz in recent years and to Chris High who gave Liz considerable help in developing and maintaining financial spreadsheets during her illness.

» **CRP**

L&PDT News

It has been an exciting and busy but also sad time within the L&PDT this quarter.

It's always good to be able to celebrate progress! At last, as we report on P.12, Dymock has reached 'practical completion' (with tree planting and final landscaping under way as we go to press. Then it's 'just add water!') and a number of confidential land negotiations are coming together.

Last time we had the great and simultaneously sad news that Stephanie Pike had secured a training contract to become a solicitor. The legacy of her work continues with another grant having just been awarded to us (we hope to be able to report more next time). This was all too quickly followed by Roz Rutter's long-standing determination to secure a pupillage at last being fulfilled. We could not be happier for her as she has accomplished this in some style at the leading criminal and legislative set in Wales. A very happy but also sad day as Roz was co-founder of the L&PDT and essentially why it came about. She will be very sadly missed.

Roz remains in touch as one of our legal advice team and few days go by without her getting updates to ensure we are still delivering! We announced in edition 124 of **The Wharfinger** that former Canal & River Trust Legal Director and Company Secretary Nigel Johnson (who was Legal Director of CRT's predecessor British Waterways) had volunteered to join the team. Just as we were going to press Nigel made it clear he would be increasing his support significantly for L&PDT from December – a very crucial and important boost for us in taking crucial schemes forward.

One of the things that the L&PDT are all looking forward to is the completion of the Mill Barn Project. This will provide desperately needed support resource for all our H&G CT volunteers, as well as facilities for our regular user groups at Over, a crucial meeting and training room, and hugely improved open

GRAND HOLIDAY DRAW 2015 *Results*

Thank you to everyone who helped, in any way, to make this yet another successful **Grand Holiday Draw** raising **£2,291** for the H&G CT. As always especial thanks to our 'star sellers' and to the prize donors. The draw was once again made at the September Social Evening at Much Marcle, on Tuesday 15 September.



Janet Moulton reads out the winners as the speaker, Roger Halse, draws out the tickets.

1st Prize: Ticket no. 07878

Narrow Boat Holiday for 4 – donated by **Black Prince Holidays**: Mr Vaz Juna, Gloucester.

2nd Prize: Ticket no. 03644

One Day's Boat Hire – donated by **ABC Leisure** – Mr Mike Taylor, Cheltenham.

3rd Prize: Ticket no. 07517

One night Bed & Breakfast for 2 at **The Wharf House** – Mr Chris Hands, Gloucester.

Our grateful thanks to **Black Prince Holidays**, **Anglo-Welsh** and **THE WHARF HOUSE** for donating the Holiday prizes which help to make our annual holiday draw such a success.

Thank you to everyone who supported the 2015 Grand Holiday Draw in any way.

plan office facilities, for the L&PDT. From sponsoring a few bricks (or a lot!) at £5 each through to the essential disabled lift at £10,000, with many more options in between, please do support the H&G CT Mill Barn Appeal. Further details are on page 11 and in the enclosed leaflet. *Thank you.* » **DRP**

Replacement Parts Cover

including Marine Breakdown & Recovery Service

**NOW AFTER YOU'VE BROKEN DOWN,
WE CAN PICK UP THE REPAIR BILL.**

- 24/7 Nationwide cover on all inland waterways
- Covers a huge range of specified parts, including the gearbox & drive plate, couplings, starters, alternators and many more *
- Pays up to a maximum of £1,000 per repair
- You can make up to 4 claims per year
- * E consumables such as cables, filters, rubber components and the like that require routine wear and tear replacement.

annual membership from only

£130

RCR



KEEPING YOU MOVING

tel: 01785 785680

www.rivercanalrescue.co.uk

E Buckland

GARDEN MACHINERY

**SUPPLYING AND MAINTAINING GARDEN, ESTATE AND
FORESTRY MACHINERY FOR OVER 40 YEARS**

TEL 01452 790305

FAX 01452 790693

EMAIL info@bucklandgardenmachinery.com

KUBOTA • STIHL • HUSQVARNA • HONDA • VIKING

Mill Barn

APPEAL



Workshop facilities and equipment storage will form part of Mill Barn.



The reconstruction of the former Mill Barn at Over Basin is planned to provide a desperately needed support resource for the Herefordshire & Gloucestershire Canal Trust.

The foundations for the Mill Barn, to replace the current shipping containers and site hut, will start soon as possible once the anticipated planning permission has been formally granted. The barn will provide a much improved volunteer mess room, disabled WC facilities, storage and a much needed base for the expanding Canal-wide maintenance team. The large loft space will provide a crucial meeting and training room, and hugely improved open plan office space for the Legal & Project Development Team.

The facilities will be available for the regular users of Over Basin like, **Gloucester and District Model Boat Club, Sailing4Disabled, and Over Fishing Club.**



Facilities will be built into Mill Barn for our regular users of Over Basin.

Much of the stone and timber from the original barn has been carefully palletted and stored at Over since it was demolished to make way for the housing development.

A number of items for the Barn have already been sponsored (*see below*), but there are many items still needed to complete Mill Barn. You can help us make the restoration a reality by sponsoring an item for the construction of the barn from the list on the leaflet which you will have received with this edition of ***The Wharfinger***.

Our grateful thanks to:

Mill Barn Cornerstone Sponsors

Mrs P Anthony, Hereford

Major P D Mootham, Gloucester

Brian Catton, Gloucester (4 cornerstones)

Caroline Jones, Cinderford (4 cornerstones)

Mr & Mrs D M Kirby, Worcester

W B Brown, Bath (4 cornerstones)

Thank you

Dymock

Housing Development Official Opening!

by Maggie Jones

The £3million new housing project in Dymock, which includes our canal basin, was officially opened at the end of October. It will be welcoming its first residents over the next couple of months as building work comes to an end.

The opening event included local residents as well as representatives from the organisations; Dymock Parish Council, Two Rivers Housing Association, the Landowner, GP Thomas and H&G Canal Trust, all of whom are involved in the development, which has been very aptly named **Winding Pool Close***. Priority for the low energy cost housing association properties has been given to people with a local connection, providing them with the opportunity to stay in the area they already know and boosting student attendance at the local school. The H&G CT's own house within the development will be completed in the new year adding another rental property to the limited number available locally. This will bring yet another regular source of income (together with the perpetual,



Houses progress in the distance whilst the canal basin is shaped ready for planting.



Two Rivers Housing Association

David Thomas (GP Thomas), David Penny (H&G CT), Garry King (Two Rivers Housing), Dorothy Brooks, Terry Ball (Parish Council).

index linked, annual payments from the properties that are for sale on the development) to the H&G CT.

The new canal basin, will bring more tourism to the village. The area around the basin will be a haven for wildlife, and there are plans to plant native berry bearing shrubs and bushes with climbing plants to provide food and shelter for birds and smaller creatures. There will also be strategically placed bat and nesting boxes around the site. The community involvement and support for the scheme is very positive and a number of local residents have said they plan to join the H&G CT in a tree-planting day to be held in November shortly after we go to press.

The work involved in negotiations in this unique partnership has been long and complex. Our thanks to the L&PDT team for their great achievement in securing both an important short but strategic section of restored H&G Canal and yet another important 'bricks and mortar' asset for the H&G Canal Trust. » MJ

** Traditionalists will be quick to point out that, strictly speaking, the correct name (but less attractive from other perspectives) for a widened area of a canal where narrowboats can turn is a winding hole. Pronounced as in 'gust of wind', not as in winding cotton on a reel. Ed.*

FOR RENT

ACT NOW

... if you want to rent a 3/4 bedroom character house in Gloucester with a total makeover!

Situation

The cottage is situated within walking distance of Gloucester Quays and Gloucester College as well as the docks and town centre, providing excellent shopping facilities and amenities.

Llanthony Lock House is a lovely riverside property close to Gloucester available for family or ideal as a shared house with the option of up to four very good sized double bedrooms.

This charming former Lock Cottage is offered on an unfurnished basis and comprises entrance hall, downstairs w.c., newly fitted kitchen with electric cooker, fridge and washing machine, two bedrooms or reception rooms downstairs, plus a huge lounge/sunroom. 2/3 bedrooms upstairs, newly updated bathroom with bath, shower, sink and large airing cupboard. Storage heating throughout, double-glazing, all external walls are heavily insulated, large garden.

It is anticipated that demand will be high so don't miss this opportunity.

For more details and to register your interest please contact aimee@thewharfhouse.co.uk



THE OAK INN
Staplow HR8 1NP
01531 640954

A VERY WARM WELCOME AWAITS YOU AT OUR NEWLY REFURBISHED INN
OPEN FOR LUNCH AND DINNER EVERY DAY IN OUR COSY BAR AREAS OR RESTAURANT
GOOD SELECTION OF REAL ALES - GOOD BEER GUIDE 2009 & 2010

REAL LOG FIRES, FLAGSTONE FLOORS, OLD BEAMS & HOPS
PRETTY BEER GARDEN - PARTIES CATERED FOR - DOG FRIENDLY
THE ONLY PUB IN HEREFORDSHIRE THAT ABUTS THE LINE OF
THE HEREFORD AND GLOUCESTER CANAL

FOUR EN-SUITE B&B ROOMS NOW AVAILABLE
www.oakinnstaplow.co.uk



A NEW Weekend Volunteer Team starts at Newent!

by Maggie Jones

H&G CT is currently undertaking investigative works, prior to applying for funding and consents to develop this significant tourist attraction at Newent Station.

Inspired by the great artist's impression of what the site will look like, with the station rebuilt and a narrowboat passing between the platforms, the first weekend group started early in October.

All the work is done in liaison with the regular Tuesday volunteers who have already made a huge impact by clearing the old builder's yard allowing the area between the platforms to be cleared by Moat Contracting.

First tasks for the new volunteer group included finding the very ends of the two long platforms and also continuing to sort and clear the huge amount of junk that had accumulated over the years. On the following occasion great strides were made on clearing some of the dense undergrowth.

A team from **Gloucester Vale Conservation Volunteers** has also worked to construct a further length of the footpath through the woodland at the



New volunteer, John Townsend, uncovers the ends of the long platforms.



Above left: new volunteer, Charles Smith, clears debris from the platform.

Above right: Wilf and John discuss the planned work.

Left: One of the platform ends revealed.

foot of the embankment. We greatly appreciate their help and look forward to further visits.

Seeking more volunteers!

There is still much to do and the new weekend group is looking for volunteers to help with this huge task. We hope that a weekend slot will encourage people who work through the week, perhaps in an indoor environment, and would relish the opportunity of getting out into the countryside for fresh air and exercise. *We can offer that by the spade!* If you don't like digging there is much else to do.

If this appeals to you, or you know someone who may be interested in joining the group, please contact **Wilf Jones 01452 413 888**.

» MJ



Ian and Gabriel move the dense undergrowth to the bonfire.



John clears an access to the work area whilst Ian clears the undergrowth.

Maggie Jones

E.B. HAYWARD & Co. LTD

Sheet Metal Work, Welding & Fabrications

We are a family run business established over 50 years ago, specialising in sheet metal work and fabrications in most metals including mild steel, stainless steel, aluminium, titanium, copper and brass.



- Items can be manufactured to your own drawings or from instructions.
- Quantities from 1 to 10,000.
- Sizes can range from a washer right up to fabrication of 1 tonne.

We have a wide client base with particular involvement in hydraulic press, concrete, materials handling, feed and flour milling industries.

It has been our pleasure in supporting the Herefordshire and Gloucestershire Canal Trust for over 20 years, and we will continue to *work together in the present, to revive the past, and secure a better future.* © H&GCT

Simon Hayward: 01452 700384, Fax 01452 700740

SHEET METAL WORKS, ASHLEWORTH, GLOUCESTER, GL19 4JJ

Report by Brian Fox

Many thanks to all those who helped on our Open Day in September from the ladies on the stalls and in the kitchen to those along the towpath talking to the numerous visitors, and not forgetting those behind the scenes who organised the publicity and printed

Oxenhall to Newent Station embankment

height of the
embankment



BEFORE CONSTRUCTION

View from Horse Fair Lane – yellow flag shows height of the embankment.

height of the
embankment →



AFTER CONSTRUCTION

View from Horse Fair Lane – how the embankment will look with a boat cruising along it.

posters etc. It was generally agreed that it was an extremely successful day in raising awareness of H&G CT plans for the future of the Canal in this area and also raised over **£550** – by far the most of any Open Day in this area (so far! – Ed). Every pound helps to bring these plans to fruition.

The fine weather was a bonus! There was great interest shown in our plans for the station and related work. The photo montage of the proposed embankment, 'before and after' produced by Maggie Jones, helped to overcome the concerns of many regarding the impact of the embankment and the artist's impression of the station was well received. » **BF**



BEFORE CONSTRUCTION

Brian Fox

View from the line of the Canal – flag shows height of the embankment.



AFTER CONSTRUCTION

Maggie Jones

How the Canal will look at this point on the embankment.

OVER FESTIVAL

Report by Maggie Jones

With a great line-up of music playing on the terrace at The Wharf House, this year's Festival started with a swing.

The big marquee housed a great range of produce and crafts and the refreshments marquee was kept very busy serving teas, coffees, sandwiches and homemade cakes. We were able to make more use of the enlarged compound area this year. Plenty of activity on the water encouraged visitors to take part on Mister Maysey and the Wheelyboat.

The Saturday was bright and sunny, a good number of visitors joined us, but alas, the situation changed on the Sunday when the rains started in the early morning. Despite this, a few gallant visitors came, but then numbers drastically dwindled.

The volunteers kept each other's spirits up with extra rounds of tea, but by lunchtime all our enthusiasm was seriously dampened as the rain just kept falling. Trying to keep ourselves and the stands dry became increasingly difficult! We had to declare a washout for the Sunday and pack down early. This was the first time that the rain had been so heavy we have not been able to continue.

A big thank you for all the volunteers who contributed in any way to the event. *Please let it be warm and sunny for both of the days next year!*

» MJ



'Uke in Hand' entertain visitors on the terrace.



Joan Jones signs up visitors to the Grand Holiday Draw.



Sailing4Disabled provided katacanoes and the pedalos for visitors to try.

Berry White



Alan Keef brought his unique steam boat.



Gloucester & District Model Boat Club had a great array of miniature boats.





ABC Leisure Group

- **Narrowboat holidays**
- Brokerage services
- Moorings with shore line hook ups
- Boat shares & management
- Chandlery on site
- Blacking Services
- Dry Dock / Crane for Surveys
- Diesel, Calor Gas, Pump Out, Coal
- Repairs, Maintenance & Refit
- Full Boat Re-Paint



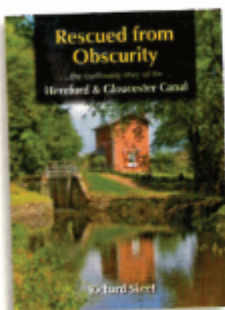
10 marinas across
the country



everythingcanalboats.com



Gift ideas from THE WHARF HOUSE



Rescued from Obscurity

The story of the H&G Canal written by former Chairman Dick Skeet and published by the H&G CT makes a excellent gift.

£10 £12 by post

"a thoroughly competent and enjoyable book ... informative text, a good selection of photographs and clear, concise, maps" Waterways World

Gift Membership of the H&G Canal Trust

If you are still struggling to find that elusive Christmas gift why not give a H&G CT Gift Membership – a gift that lasts all year – it will outlive those flowers or box of chocolates!

Available to callers at The Wharf House or just send your and the recipient's details, together with the relevant membership rate for the gift (for rates see inside back cover), to the H&G Canal Sales and Promotion mail order address (inside back cover). Please include your 'phone number in case of any queries. Details of your gift will be sent inside a FREE H&G Christmas card at no extra cost to you and over the next 12 months the recipient will receive four editions of **The Wharfinger**.

From **£7.50**

NEW for 2015 – Gift Membership Plus!

Add another £10 to the subscription cost (or £12 by post) to include a copy of the highly acclaimed **Rescued from Obscurity**.



NEW Gift Voucher for Afternoon Tea

By popular demand there is now a gift voucher for Afternoon Teas at **THE WHARF HOUSE**. The teas include a pyramid of sandwiches, scones, cakes and desserts as well as a choice of beverage. Vouchers are **£16.50** per person. They can be purchased either at **THE WHARF HOUSE**, or available by post with a gift card included for value of vouchers + £2.95.

Why not come and see us soon – we have many other gift ideas so why not do your Christmas shopping in the Visitor Centre then join us for a meal – a far more relaxed way of working through your gift list!



Christmas Cards

Christmas Card of **THE WHARF HOUSE** and Over Basin at dusk. The design is printed on quality card, and comes singly or in packs of 5 with self-sealing envelopes. Size: 210mm x 99mm. **£1** each or **£3.99**

for a pack of 5 cards with envelopes, plus £2.95 P+P for minimum of 4 packs of 5.



Gift Vouchers for the Restaurant

Why not surprise your loved ones this year with a gift voucher

for use at **THE WHARF HOUSE** offering the chance to sample sumptuous local food, created with flair and imagination. Vouchers can be purchased in denominations of **£20**, available by post with a gift card included for value of vouchers + £2.95.

Social Evenings

at The Royal Oak

The third Tuesday of every month (except December)
at **The Royal Oak**, Much Marcle, HR8 2ND
7.30 for 8pm start.

Please support our monthly meetings, make a note on the calendar and tell your friends and neighbours; we have an excellent venue and interesting speakers on a wide range of topics. Why not share transport and make an evening of it – **everyone is welcome!**

Note! December - No meeting

19 January

At your convenience!

– Dick Skeet

A look at sanitary stations on the waterways in Dick's inimitable fashion. Everyone will be talking about this!

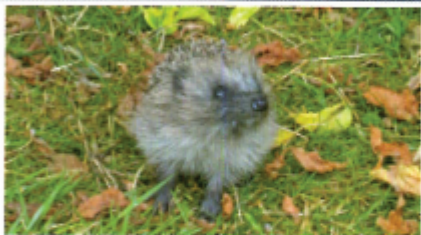


16 February

Hollycroft Hedgehog Rescue

– Maureen Williams

Our wildlife talk this year turns to our prickly friends. They may be hibernating but please come out of your hibernation and join us for this talk.



15 March

From Amsterdam to Budapest

– Penny Platts

A journey along the waterways of Europe on the Rhine, Main and Danube. Come and hear about a wonderful trip.



MIDWINTER TRANSPORT

ESTABLISHED 30 YEARS

With a full range of vehicles including

- flat curtain sided and refrigerated ■
- from half tonne Escort to 38 tonne artic ■
- Hiab crane vehicle ■ Nationwide ■



TOTALLY COMMITTED TO DELIVER

Newent 01531 820276

Fax: 01531 822247

Strawberry Hill, Newent, GL18 1LH

www.midwintertransport.co.uk

email: midwintertransport@yahoo.co.uk

THE WHARF HOUSE Rosette



We are delighted that our Restaurant at The Wharf House has been awarded a Red Rosette for the sixth consecutive year!



Winter Opening times at

THE WHARF HOUSE

Tuesday to Saturday inclusive from

10am and most evenings

[booking very strongly recommended].

Closed on **Sundays**.

On **Mondays** we are open as a tea room only 10-3pm.

Over **Christmas** and the **New Year** we are closed from Sunday, 20 December reopening on Thursday, 7 January. It is always advisable to book as we can get very busy. We only accept a certain number of tables at any time in the diary, so do not be offended if you are turned away even if we do not look full!

We normally request 48 hours notice for bookings for the Tasting Menu. The restaurant is available to be booked for private functions 7 days a week.

Christmas Menus:

www.thewharfhouse.co.uk

THE WHARF HOUSE

Over, Gloucester, GL2 8DB **01452 332 900**
enquiries@thewharfhouse.co.uk

AWARD-WINNING WATERSIDE
RESTAURANT WITH ROOMS



The Wharf House serves acclaimed modern British and European cuisine with a twist.
Booking strongly advised.

Christmas at THE WHARF HOUSE

Three Courses (pre-order menu)
only £25 per person

MALSWICK HOUSE

B4215, Newent, GL18 1HE **01531 822 634**
enquiries@malswickhouse.co.uk

TRADITIONAL PUB • FOOD • FUNCTIONS



Christmas Functions Available

Deluxe Buffet only £18.95 pp, Traditional £14.95.

Open every day except Christmas Day!

All profits from The Wharf House and Malswick House will be used for the promotion and restoration of the Hereford & Gloucester Canal.



RESTORATION UPDATE

News of our work on the Hereford & Gloucester Canal

Want to get involved at any of our restoration sites? – You will be most welcome – all the contact details are on page 32.

Yarkhill

Chris High

The weather has been kind enabling both us and the farmers to get required tasks completed.

150 yards of the wet and soft canal bed and banks up from the site hut have been hand cut and cleared of vegetation. Not an easy task, so thanks to the Team for their perseverance without complaining too much! Clearance in and around the lock has taken place and the farmers have harvested their fields giving us the chance to burn the vegetation that we have accumulated over the summer.

Early October saw the rest of the canal bed, banks and the towpath hedge cut by hired tractor. My many thanks to Colin Dymott for organising this and also for his generosity in paying for it. The Team will now be concentrating on the remaining tidying up of the canal bed before the rains set in.

» CH



The neatly maintained canal bed and towpath.



Before and after maintained sections meet.

Chris High



H&G CT

LAND FUND

more land = more restoration

The LAND FUND will provide the means to obtain the crucial sites along the line of the Canal where there is no new development proposed or where we cannot acquire the line of the Canal by other opportunities. It is a vital fund to help us eventually restore the full length from Gloucester to Hereford.

visit www.h-g-canal.org.uk then click 'About the Trust' then click 'Land Fund'



Colin Dymott

The rest of the canal bed, banks and the towpath hedge cut by hired tractor.

Newent and Oxenhall

Brian Fox

Our Open Day in September was a great success (see page 16). As a little bonus for those volunteers who could make it with their partners a day trip on the Llangollen Canal was organised a few days later.

It was a long drive to get there but well worth the effort as it is a beautiful canal to cruise on. First of all we crossed the Pontcysyllte aqueduct and then two tunnels with a wooded stretch in between before crossing the Chirk aqueduct and turning round by a pub where we moored for lunch. Most of those on board had a go at steering on this narrow canal where there is not much room for error and I shall just say that some proved better than others and a fun day was had by all.

Back to the old routine and clearing the remains of the willow which fell in the spring was a priority. Since the Open Day a large ash tree has also fallen in the wooded area and another is leaning at a rather alarming angle so our log pile will be growing quickly. The offer of logs for sale, not just willow, is still there (see



Brian Fox

Crossing the Pontcysyllte aqueduct.

page 37). More of the brambles will be strimmed and we have no idea of what may be found buried amongst them but it will open up the area for a comprehensive survey for the future construction work. Annual maintenance on the tractor has begun so we shall have to do without it for some weeks.

A bid for grant aid for reconstruction of the station and ticket office is soon to be prepared but further clearance work on the platforms has to be undertaken first to see what exactly is involved. Trial holes are also being dug to locate the footings of the old buildings using measurements from the OS map of 1922.

Finally I have to report an unwelcome resident in our canal which we have been aware of for some years but ignored. I refer to the American signal crayfish which carries a virus which kills off our native crayfish and is classed as a



The American signal crayfish.

pest. They are bigger than the natives and apparently good to eat so it was decided we should buy a crayfish trap and catch them. A video on the web made it look so easy and showed how to bait and set the trap – they caught about 10 crayfish in one 24 hour session in the demonstration. Our first effort where the trap was placed in the water just above the lock proved

unsuccessful as was our second and third even though we left the trap for a week. So one final effort and on returning to retrieve the trap some days later it was gone – stolen. We shall never know why we didn't catch any, perhaps they are no longer there, but I hope whoever stole it has more luck than we did!

»» **BF**



Brian Fox

Willf Jones oversees the work being carried out by Moat Contracting between the platforms of Newent Station.

stationery • leaflets • mailers • posters • folders • programmes • newsletters • brochures • prospectuses • calendars • magazines • books • exhibition panels

PRINT PLUS

01432 272025



126 Widemarsh Street • Hereford HR4 9HN
Fax: 01432 353962 • Email: enquiries@printplushereford.co.uk

www.printplushereford.co.uk

always delivering quality



A diverse range of activities was undertaken through the summer and autumn in addition to routine mowing and strimming. Progress on the major operation of the final stages of excavating and re-profiling the canal bed has been relatively slow with both volunteers and machinery spending time away from the site to help with the development of both the Kymin and Newent projects.

Channel Shaping

Waiting for the right ground conditions to allow dredging and channel shaping of the original, undisturbed section of the site can be a little frustrating. But carrying out this work when the bed is relatively dry and firm pays dividends, particularly when multiple dumper journeys are required. In August a suitable window occurred. Following some preparation creating temporary dams and an access way in the bed of the canal, and using the large pump to relocate excess water, we were able to dredge and channel shape a good length in the centre of the site. Unlike the previously excavated filled in sections the material removed here was good, fertile organic silt accumulated over the many decades since the canal was abandoned. In a symbiotic arrangement with the local landowner we were able to distribute the material over adjacent poor pastureland which saved long dumper trips to our normal tipping area and had the effect of improving an area of his farmland. It was fortunate that we were able to complete the work in three days as overnight and throughout the day 4 it absolutely poured down – it was August after all!

Right: The completed section after heavy overnight rain – perfect timing as we would have aborted the exercise had the rain come sooner!



Above: The large pump in use removing water from the centre section to allow channel shaping to commence.



Right: Excavator in use removing silt and shaping the channel.

Below: Steve, in relaxed fashion, tips the fertile silt on an adjacent pasture watched by horses.





MOAT CONTRACTING

GROUNDWORK SPECIALISTS



Large enough to deliver. Small enough to care.

07887 544 400

moatcontracting@aol.co.uk



Alan and Robert go 'Native American' and paddle the return leg.

Dinghy Training

You may recall in edition 124 of **The Wharfinger** a photo taken at Over of Pat painting the dinghy hull. Ted Beagles subsequently delivered the boat to Moat Farm, resplendent in the official H&G CT colour scheme. It was immediately decided that we needed a break from our normal 'chores' so the dinghy was launched and a variety of rowing / paddling styles were experimented with up and down the cut. Despite the mid-summer water levels being a little low your author adopted the traditional 'Sir Steven Redgrave technique' covering the regatta course in good time (not!) whilst Alan and Robert went 'Native American', paddling the return leg canoe style (but not always forwards!).

North end earthworks.

As mentioned earlier some projects have moved a little slowly. Not much further work has been undertaken at the north (double lock) end of the site since my last article although Paul and Alan were able to remove the large spoil heap that had accumulated during the excavation and towpath profiling to date. They did this on day 4 of our August campaign and incessant rain made for muddy and slippery conditions. Paul needed all his dumper driving skills to negotiate the deep ruts that inevitably develop when carrying out this work in such poor conditions. Their sterling effort has cleared the area and further work here can now take place.



Leisure time as your author adjusts his rowlocks and attempts to emulate Sir Steven Redgrave.



It's pouring down as Paul arrives to position the dumper for loading at the north end of the site and Alan sits atop the diminishing spoil heap.



Carefully does it! Paul makes another trip to the unloading area.



Ready for fitting. The new and the old tracks.



Martyn Tilford, Ted Beagles, Alan McBride

Final checking before re-tensioning.

Excavator track replacement.

Inevitably stuff wears out or gets damaged and requires replacement. The left track on our Kubota excavator was never in the best of health being both well worn and cracked. It suffered some link insert damage at the Newent station site by accidentally tracking over some lumps of concrete – never a good thing with rubber

tracks. As the condition of this damaged track was likely to lead to further difficulties the decision was taken to replace it. Removal of the old track, inspection of the drive sprocket, idler wheel and rollers and fitting the replacement was fairly straightforward given that they weigh around a ¼ of a ton. Many thanks to Steve and Alan for their assistance.

» MT

Over Basin & Vineyard Hill Ted Beagles

Throughout the summer we have been busy with all the usual seasonal activities like cutting grass, weeding, cutting back undergrowth etc. and preparing and clearing up for the Over Festival. Good progress has also been made on the heritage boats restoration work.

The Reed Cutting Boat

The reed cutting boat has reached the point where we are almost ready to try it out in the water. The propulsion system is now complete, after a last minute hitch with the gearbox which was found to be stuck in gear. Fortunately we still had the gearbox from the old boat that we dismantled two years ago, and after draining the oil, and flushing it out and refilling with new, it seems to be in good order; only a trial run will finally prove if this is the case. The last challenge

before going into the canal is to actually start the engine, for which we need a very strong person; any volunteers for the job would be most welcome! The cutting mechanism has been reassembled, and is almost complete, but the actual cutting element is unlikely to put into operation due to major H&S issues concerning unguarded machinery.



A new gearbox for the reed boat.

Heritage Boats

Terry has now taken on a lead role for the restoration and maintenance of narrowboat Alder. He has recently been joined in this by new volunteer Chris Hands. Together they are making great progress with the front hold. The old heavy wooden deck boards have been replaced by lighter boards, joined together in groups of three with sealing between them; the whole deck has then been covered by a shaped tarpaulin to keep the rainwater out. Inside the hold the whole area has been cleaned out in preparation for painting, and the old steel stairs removed and replaced by steps attached to the front cabin door. Access to the hold and front cabin is now very much easier.

Meanwhile on Renton, Ernest is making good progress on fitting out the open front hold. Painting and floor construction is completed and he is now on to the more difficult task of constructing a traditional narrowboat hold cover. Wooden edging has been fitted around the hold opening and the work has moved on to the A frames and posts which will support the tarpaulins. In the meantime it has also been necessary to replace the temporary decking boards, as the original ones had started to rot and become dangerous.

Both boats are run regularly along the full length of the Canal at Over. This ensures that they continue to remain in good working order, and also that the narrow passage past the landslip region of the Vineyard Hill section remains navigable. Water levels were temporarily raised during the Festival to assist.



Above: Chris working on Alder's hold.



Left: A design meeting aboard Renton.

Below: Renton with new cover to the hold.



Andy paints the stern compartment on Bosley.

Ted Beagles

Mister Maysey

During the Festival weekend Mister Maysey was providing boat trips for visitors, and as usual proved to be very popular. Skipped by Dave Hurran, looking very smart in traditional boater's costume and with a commentary by Mike Bowden, she ran continually all day on the Saturday, but the weather on Sunday meant we only had a few customers.

The Great Wall

Following the successful completion of the base concrete slabs, work on the 'Great Wall' of the new Lottery funded bicycle store continues and has reached the stage of erecting the shuttering and reinforcing steelwork for the vertical sections.



Bob erects the vertical reinforcing for the vertical concrete.



Ted Beagles

Over's visiting swans on the slipway.

Two swans seem to have taken up residence at Over Basin again, but we don't know if they are same ones which tried building a nest in the mill race in the spring. They have been here for several weeks now; they are always near the slipway area first thing in the morning, but don't seem to stay around for long on Wednesdays, before there is tremendous flapping of wings and splashing of feet as they fly away; *I can't think why!* » **TB**

Would you like to be involved?

You will be made most welcome on any of our sites, please contact:

Aylestone and Kymin

Wilf Jones on 01452 413 888
wilfredjones506@gmail.com

Yarkhill

Chris High on 01568 615 575
chris@chrishigh.plus.com

Oxenhall

Brian Fox on 01432 358 628
brianfox74@gmail.com

Newent Station – Saturdays

Wilf Jones on 01452 413 888
wilfredjones506@gmail.com

Moat Farm

Martyn Tilford on 01452 790 358
martyn@tilford.free-online.co.uk

Over Basin/Vineyard Hill

Ted Beagles on 01452 522 648
tedbeagles@blueyonder.co.uk
Maggie Jones on 01452 618 010
maggiejones@blueyonder.co.uk

Llanthony

Paul Henshaw on 01684 293 930
paulhenshawuk@yahoo.co.uk

Llanthony

Paul Henshaw

Good progress continues to be made with the refurbishment of the cottage at Llanthony.

A big effort has been made with redecorating the building and at the time of going to press all the rooms with the exception of the bathroom have now been revamped. New plumbing has been installed, and wiring for the bathroom and shower unit has been



New storage heaters are fitted.



Graham paints the stairway.



Ted Beagles

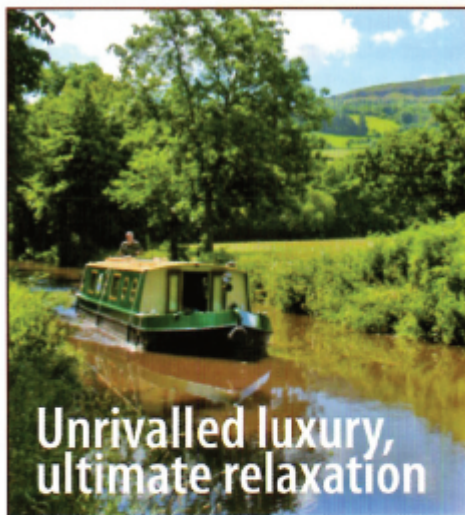
Top: Kerry got into the airing cupboard to paint it!

Above: Paul fits the new hot water tank.

connected. A new bathroom suite is now in situ and the electric storage heaters are now operational.

There is still some work to be done to get the cottage prepared for the rental market and any additional volunteers would be welcome especially those people who have woodworking skills.

» PH



Unwind however you choose, and for as long as you like, in the splendour of the Brecon Beacons on the Monmouthshire and Brecon Canal.
To know more: 01873 858277
www.beaconparkboats.com

Norman Mitchell

Following the retirement of Chris Witts as Chairman of the Friends of the Museum we welcome their new Chairman (and H&G CT Member) Norman Mitchell as our regular correspondent.

The British Empire Medal has been awarded to Friends member Hugh Conway-Jones, Gloucester Docks and Canals' brilliant historian. A very well deserved recognition for many years of study and advice, documentation and knowledge that will continue to be of benefit to many.

In preparation for the Heritage Lottery Project refurbishment of the lower two floors, Friends volunteers have just 20 days after the museum closes to the public at the end of October to clean and move all the artefacts on display to Level 3 and 4 for storage.

Chris Witts mentioned in the Spring edition of *The Wharfinger* that the story of the importance of the local waterway is to be featured. There is now a move to also include the importance of the canals joining the River Severn just a few miles from the Docks. The H&G and the Stroudwater canals should feature but we still await the detail from the designers of the project.

Although the Museum will be closed for the duration, Museum Boat Trip tickets will be available from the Dock Office in Commercial Road. The popular Santa Boat Trips will run from Merchants Quay. The Friends talks will continue throughout the winter at the Warehouse on Parliament Street, Gloucester.



We look forward to the reopening with new interpretations and displays accompanied by lots of steam for the Dredger and the Steam Crane! More details in a future edition of *The Wharfinger* and on our website www.friendsofgwm.co.uk

There is always something going on at the Museum – why not pay us a visit? Our website is at www.friendsofgwm.co.uk.



» NM

**Gloucestershire & Herefordshire
Branch
Social Meetings and Events**

The Warehouse, Parliament Street, GL1 1HY
Free parking at the Docks, Southgate St from 6pm

January – no meeting

Thursday 4 February 7.30pm
Stratford and Avon canal
Clive Henderson (ex iwa national chair)

Thursday 3 March 7.30pm
AGM followed by CRT speaker

Thursday 7 April 7.30pm
CCT and the latest developments
on the HLF Bid
Liz Payne

Further details contact: **Martin Turner**
email: martin.turner40@btinternet.com
01452 312 228

SALT

by Nigel Jefferies

On the western gable end of the building facing the in-filled barge arm at Withington Wharf, the word SALT is discernable.



The building is a dwelling, possibly the house of the assistant to the Wharfinger*. Salt was not stored in the house but elsewhere, so this is an advertisement drawing attention to the fact that salt was available at the wharf.

In a recent publication about life in the eighteenth century the arduous existence of working people is clearly depicted; the perils of pregnancy and birth, high infant mortality, the hardship of life and that adult life expectancy in the 1750's was only 42. The difficulty of providing an adequate and varied diet is also pointed out.

In order to avoid a meagre diet during the winter-time, many country people reared a pig during the spring and summer, which was killed with the onset of winter. The practice is poignantly described in Thomas Hardy's most compelling and powerful novel *Jude the Obscure*. Jude, having been tricked into marriage by Arabella Donn, set up home with her in a rented cottage at Marygreen. Since Arabella is the daughter of a pig farmer the couple raise a pig. When the time arrives to kill the fattened animal a local pig-killer named Challow is engaged. However Challow fails to arrive at the appointed hour, possibly due to his propensity to drink, but also because of an over-night snow fall. Consequently Arabella tells Jude that he must undertake the task. In the pivotal scene, Hardy relates that Arabella wanted the pig to bleed slowly to death to ensure the meat is white, but Jude, affected by the animal's distress, despatched it quickly and Arabella taunts her husband for being 'such a tender-

hearted fool! Challow arrives to pick up the pieces; to clean and butcher the carcass before scalding the skin to remove the bristles. The flitches would then have been rubbed with salt and suspended in the inglenook until required.

In the first of Hardy's successful novels, *Under the Greenwood Tree*, Charley the younger brother of the story's hero Dick Dewy, disgraces himself just before the Christmas party by blackening his face and hands with the soot from the chains in the chimney-crook, upon which the hams are suspended.

On his second voyage of discovery to the Pacific departing in 1772, among other provisions, James Cook took 7,637 four pound pieces of salt-beef and twice that number of two-pound pieces of salt pork.

One of the misericords in St. Laurence's Parish Church, Ludlow, depicts a cottager warming his hands in front of a fire and beside him two flitches are hanging.

Even before the canal era salt was one of the commodities carried down the River Severn to Worcester, Tewkesbury, Gloucester and Bristol; during the eighteenth century the Severn was said to be the second busiest river navigation in western Europe. The salt carried along the Herefordshire & Gloucestershire Canal would probably have come from Droitwich, via Gloucester.

» **NJ**

**The Wharfinger, from which our magazine derives its name, was the person who owned, or was in charge of, a wharf from which goods were swiftly despatched to numerous destinations - Ed*



The club's Fun Day when Barbara and John were awarded the Jim Macdonald shield.

The Gloucester & District Model Boat Club had a successful two days at the Over Canal Festival at the end of August. Being skilled in sailing amongst full size craft, Members sailed throughout the two days, it being the same experience as our Saturday sailing at Gloucester Docks. Despite Sunday's rain we managed to enjoy ourselves and interest was shown in our models with many questions asked.

One of the stars of the event was Bob's James Bond Lotus Esprit amphibious vehicle that I mentioned last time which he designed from scratch. The car is driven down the landing slip at Over and into the water and with 'turbo jet mode' engaged thrusts through the water. With four fins extended from the mudguards extra balance is obtained, and these can be activated to cause the car to dive. Yes it fills

with water! The open windows expel the air. By adjusting the fins the car then rises back to the surface and then returns to the slip where four wheel drive is engaged and the car proceeds back to dry land.

At the end of June the club held a Navy Day. What a sight to see – around sixty naval craft on display, landing craft, submarines, frigates, destroyers and of course Phil's model of HMS Lion (see **The Wharfinger** Ed124). Not only all different models, but also representing Navies from around the world. One of the oldest models on display, constructed some 35 years ago, was Bob's paddle steamer tug Forcefull. Yes, still sailing although with some up to date electrics.

Some of the sixty naval craft displayed.



The following weekend we had our fun day. We had two competitions for motor boats and sailing boats, and of course a good old natter. Lunch was a traditional ploughman's with refreshments on hand all day. Competition was for The Jim Macdonald Shield which was won by Barbara Everitt and John Taylor.

» TT



James Bond Lotus Esprit entertains the children aboard *Mister Maysey*.



Sailing4Disabled

Pete Bisson

How fast has this year gone! As for our water activities we have managed to keep our head above water, and for our game that's really good.

Our attendance records have gone very well with an ever increasing number of willing walkers to "take to the water" in the Wheelyboat, and I promise that we do NOT pressgang anymore! Tony and Margaret have done us proud by making a DVD from the Wheelyboat; if we had used the electric motor it would have made a difference to the soundtrack as you have a job to hear me talking.

A request has been sent to Santa and he has promised to visit us at the H&G CT's Over Canal Basin on Saturday 5 December. Boat trips from 12.00 to 14.00 (weather permitting). If you need his services please call me on the number below for more details. The arrangement is you bring a named wrapped gift and, of course, the named child!

Over Canal Nature Watch: There's still "Moor" hens than Ducks or Swans! The Heron is still fishing in the canal as is the Kingfisher, who puts on a great show of his fishing skills by darting from one side of the canal to the other and then showing a wonderful effort in making a successful strike before flying off towards the river. No photo as alas I've still not retrieved my camera from the canal.

We still operate during the winter. We just wear more clothing and have HOT food!

» PB



Barry White

Top: Sailing4Disabled take visitors around the Basin at Over Festival in the Wheelyboat.

Above: Andrew discusses the pedalo.

LOGS

for SALE

We have a number of sites where we have logs, mainly ash and hawthorn, available. All proceeds support the Canal Restoration. For more information please contact aimee@thewharfhouse.co.uk.

Sailing4Disabled meets every Tuesday at Over Canal Basin from 11.00 to 14.00.

It is open to everyone – whether they have a disability or not.

Pete (Long Gone Silver) Bisson: 07913 015018
peterwb49@hotmail.com
www.sailing4disabled.org.uk



Nature Watch

Spotlight on Moat Farm

By Martyn Tilford

With every passing season new flora and fauna are observed as testament to the way we manage the Moat Farm site which facilitates and encourages this.

As July passed into August, teasels prevailed and, like several other wild flowers here, we cannot recall seeing them in previous years. Their purple flower heads are much liked by Bumble-bees and the discovery of an underground bees nest near our site hut created some interest. Initially it was thought they were entirely Red-tailed bumble-bees (*Bombus lapidarius*) but closer inspection revealed the presence of a variety of Cuckoo bumble-bee (*Psithymus rupestris*) which mimics the Red-tailed bees.

These cunning Cuckoo bees, like their feathered namesake, lay their eggs in a host nest and the Red-tailed bees mistaking the eggs as their own, tend and look after them. Although quite difficult to see in the photograph, a Red-tailed bee can just be seen leaving the nest and flying off whilst a Cuckoo bee is on the ground to the right of the entrance.

Both Pied and Grey Wagtails are often present spending their time foraging on the mud and silt that become exposed as water levels drop in the summer. Whilst in the large field maple trees above Long



Above: The (now) all weather access to the site edged with flowering teasels.
Left: Cuckoo Bumble-bee.

Tailed Tits are busy and Tree Creepers are often observed scampering around the trunk and boughs. Perhaps the highlight of our avian year was the sighting of a Kingfisher early in September. As always with these wonderful birds just a brief flash of blue as it flew along the canal and a sharp, high pitched call as it disappeared over the offside bank. The clear fly-zone that we have created along the canal encourages these visits together with Swallows and House Martins and seemingly ever increasing numbers of various Hawker and Darter dragonflies and damselflies.



Pied Wagtail



Grey Wagtail

Of course, the creation of a viable and sustainable aquatic environment is one of the principle benefits of the restoration process with the presence of fish being a good indicator of success. We are not quite at that stage yet at Moat Farm but we did catch sight of a decent sized and healthy freshwater eel (400mm approx) during the removal of a temporary dam. It is probable (although not certain) that the eel travelled overland to take up residence but it is a refreshing reminder of how quickly aquatic life can develop.



Martyn Tilford

Not quite ... the last page!

Membership and Talks

At a time when many other inland waterways restoration and allied groups have been struggling to maintain their membership numbers the H&G CT has been experiencing good results on the 'recruitment' front! Events such as the Over Festival and the Oxenhall/Newent Open Day have produced more new Members as well as those joining as a result of visits to **The Wharf House**.

Membership Secretary Nigel Jefferies continues to give talks about the history of the H&G Canal and the work of the H&G CT to a diverse range of groups and these invariably result in small, but much appreciated, donations to our funds.

»» **NJ**

Stamps

Our stamps appeal is moving along nicely with a steady flow of donations coming in for which we are very grateful. Steve Bence has been sorting through the stamps and selling various elements to interested parties - raising money for the **Land Fund**.

Thanks to your donations and his hard work the sum raised is approaching £2,000 so please do keep them coming!

Stamps can be taken to a Social Evening or other H&G CT event - or to **The Wharf House** or **Malswick House**. Or send them direct to:-

H and G Stamps, c/o Steve Bence,
35 Lime Road, SOUTHAM,
Warwickshire, CV47 1EQ

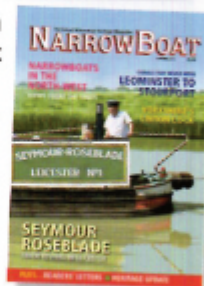
Our repeated thanks to all present and future collectors - together we can make a difference!

Thank you. »» SB

NarrowBoat Magazine

Janet Moulton has an almost complete set (from Issue 1 in 2006, 33 copies) which has been donated for sale. £70.00 ono Please contact Janet for details/ to discuss collection or possible delivery.

(Contacts inside back cover)



Advertising in **The Wharfinger**

Show the support of your business by advertising in **The Wharfinger**. Rates from £39 per issue and we will gladly design your advertisement free of charge.

Contact Carolyn Pascall

07947 108 726 / cdpascall@aol.com

Page List of Advertisers:

| | |
|----|-----------------------------|
| 19 | ABC Leisure Group |
| 33 | Beacon Park Boats |
| 2 | Beta Marine |
| 40 | Braunston Brokerage/Marina |
| 10 | E Buckland Garden Machinery |
| 4 | Gloucester Quays |
| 15 | E.B Hayward & Co Ltd. |
| 23 | Malswick House |
| 22 | Midwinter Transport |
| 28 | Moat Contracting |
| 26 | Print Plus |
| 10 | RCR (River Canal Rescue) |
| 13 | The Oak Inn, Staplow |
| 23 | The Wharf House |

**Please support our advertisers -
SUPPORT OUR SUPPORTERS**

Copy deadline for the next issue
MONDAY, 11 JANUARY

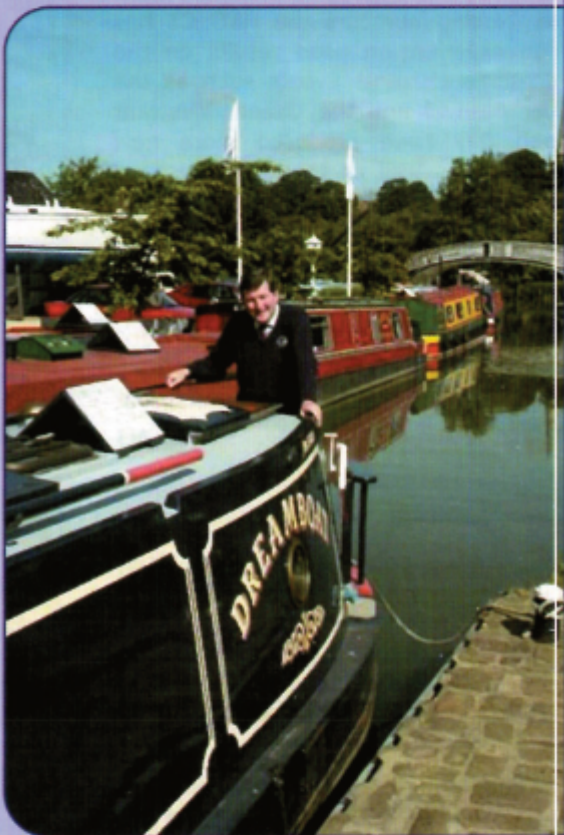
Buying or selling your DREAMBOAT?

*Then make Braunston Brokerage
– at the heart of England's
waterways – your first port of call!*

*Established in 1988, we are
a major player in the selling
of narrowboats – new and
secondhand – with a
reputation for professionalism
that is second to none.*

*Our marina offers the fullest
range of support services.
Uniquely, we have two dry
docks on-site for surveys,
hull-blackening, repaints, sign-
writing and below waterline
repairs. Also engineering and
refit facilities.*

*Sell your Dreamboat
where it will be seen!*



For full information – including our
competitive brokerage package –
contact Tim Coghlan at:

Braunston Marina Limited, Braunston,
Nr Daventry, Northants NN11 7JH
Telephone 01788 891373
Fax 01788 891436

Website: www.braunstonmarina.co.uk
Email: sales@braunstonmarina.co.uk

Want to help?

The Canal Trust is always in need of new volunteers as our activities continue to expand. We can normally find a use for any skill from gardeners to first aiders, brickies

to those willing to help with a shovel, pen or laptop. The H&G CT also welcomes offers of gifts of good quality used tools and machinery from those who no longer need or cannot use it.

Contacts

Contact any of these names TODAY!

Janet Moulton

18, Coningsby Court,
Coningsby Street,
Hereford, HR1 2DF
01432 264 366
jmoulton@tiscali.co.uk

John Hammond

07894 473 125
jhammond@blueyonder.co.uk

Cliff Penny

"Coppice", Burley Gate,
Hereford, HR1 3QS
01432 820 866
canal@penny-ep.co.uk

David Penny

01452 332 900
david@thewharfhouse.co.uk

Wilf Jones

01452 413 888
wilfredjones506@gmail.com

Ted Beagles

01452 522 648
tedbeagles@blueyonder.co.uk

Brian Fox

01432 358 628
brianfox74@gmail.com

Paul Henshaw

01684 293 930
paulhenshawuk@yahoo.co.uk

Nigel Jefferies

Two Hollylea Close, Bartestree,
Hereford, HR1 4DN
01432 850 661
najefferies@talktalk.net

Caroline Jones

01594 861286
carolinejones641@btinternet.com

Maggie Jones

01452 618 010
maggiejones@blueyonder.co.uk

Chris High

01568 615 575
chris@chrishigh.plus.com

H&G Sales and Promotion

Mail Order Sales
Janet Moulton
(details in first column)

Carolyn Pascall

07947 108 726
cdpascall@aol.com

Martyn Tilford

01452 790 358
martyn@tilford.free-online.co.uk

Legal & Project Development Team

01452 332 900
lpdt@thewharfhouse.co.uk

"Who does what ..." is inside the front cover.

General enquiries:

information@h-g-canal.org.uk

Visit our websites:

H&G Canal Trust

www.h-g-canal.org.uk

THE WHARF HOUSE

www.thewharfhouse.co.uk



'Like Us' on Facebook

www.facebook.com/hgcanaltrust

www.facebook.com/TheWharfHouse

www.facebook.com/malswickhouse

Want to join?

H&G CT UK Membership Rates

Please support our voluntary work by becoming a Member of the H&G CT.
A membership form is available online or from
THE WHARF HOUSE.

| | Annual | Life |
|----------------------|--------|------|
| Individual | £10 | £200 |
| Joint/Family | £15 | £300 |
| Senior Citizen | £7.50 | £115 |
| Joint Senior Citizen | £10 | £150 |
| Corporate | £25 | £500 |

PLEASE NOTE: All subscriptions and donations are treated as being made under the Gift Aid scheme unless you state that you do not wish us to do this. Payment made by Standing Order greatly assists us and payment remains under your control. All payments to: H&G CT, 6, Castle Street, Hereford, HR1 2NL

Unless specifically stated opinions expressed are those of the author and do not necessarily reflect the policy of the Herefordshire & Gloucestershire Canal Trust. As a Registered Charity, with defined objectives, we cannot endorse the content of any specific advertisement, product or services. The Trust accepts no liability for any matter, or advertising, contained in this magazine. Reproduction of extracts from the magazine is welcomed provided that full acknowledgement is given.

Membership records are computerised. Your entry is available for inspection if you send a SAE to the Membership Secretary.

We try to ensure details of talks/events are correct - please verify with the relevant organiser if travelling long distances.

© 2015/16 Published by the Herefordshire & Gloucestershire Canal Trust.

The Wharf House Company Ltd [No. 4627931] is part of the Herefordshire & Gloucestershire Canal Trust Ltd group of companies. The Herefordshire & Gloucestershire Canal Trust is a non-profit distributing company limited by guarantee [No. 2704407] and is a registered charity [No. 1010721].

Registered Office: The Wharf House, Over Canal Basin, Over, Gloucester, GL2 8DB.

The Wharfinger


The Herefordshire & Gloucestershire Canal


Work started in 1792 and reached Ledbury from Gloucester by 1798. In 1827 Steven Ballard was appointed to oversee completion of the canal, eventually reaching Hereford in 1845, making this one of the last major canal routes completed in Britain. The canal stretched for 34 miles from the River Severn at Gloucester, via Newent, Dymock and Ledbury to the city of Hereford, with some 22 locks and 3 tunnels. It was formally closed in 1881 to allow construction of the Ledbury to Gloucester railway which in its turn was closed in 1964.

The H&G Canal Trust

The Canal Society was formed in 1983 and in 1992 became the Herefordshire and Gloucestershire Canal Trust, a registered charity. The Trust has an ordinary and corporate membership of some 1,300 from all over the country and abroad!

Our objective is to fully restore the 34 mile Canal, from its connection with the 2,500 mile inland waterway network at Gloucester to the centre of Hereford. We have major restoration sites in each county, which together extend to some 4 miles.

 = Canal Walk leaflet available.

 = restoration sites suitable for public access.


Gloucester Quays
 Pleased to support the H&G Canal



Map based on original by Martin Ludgate, Canal Boat Magazine.

www.h-g-canal.org.uk