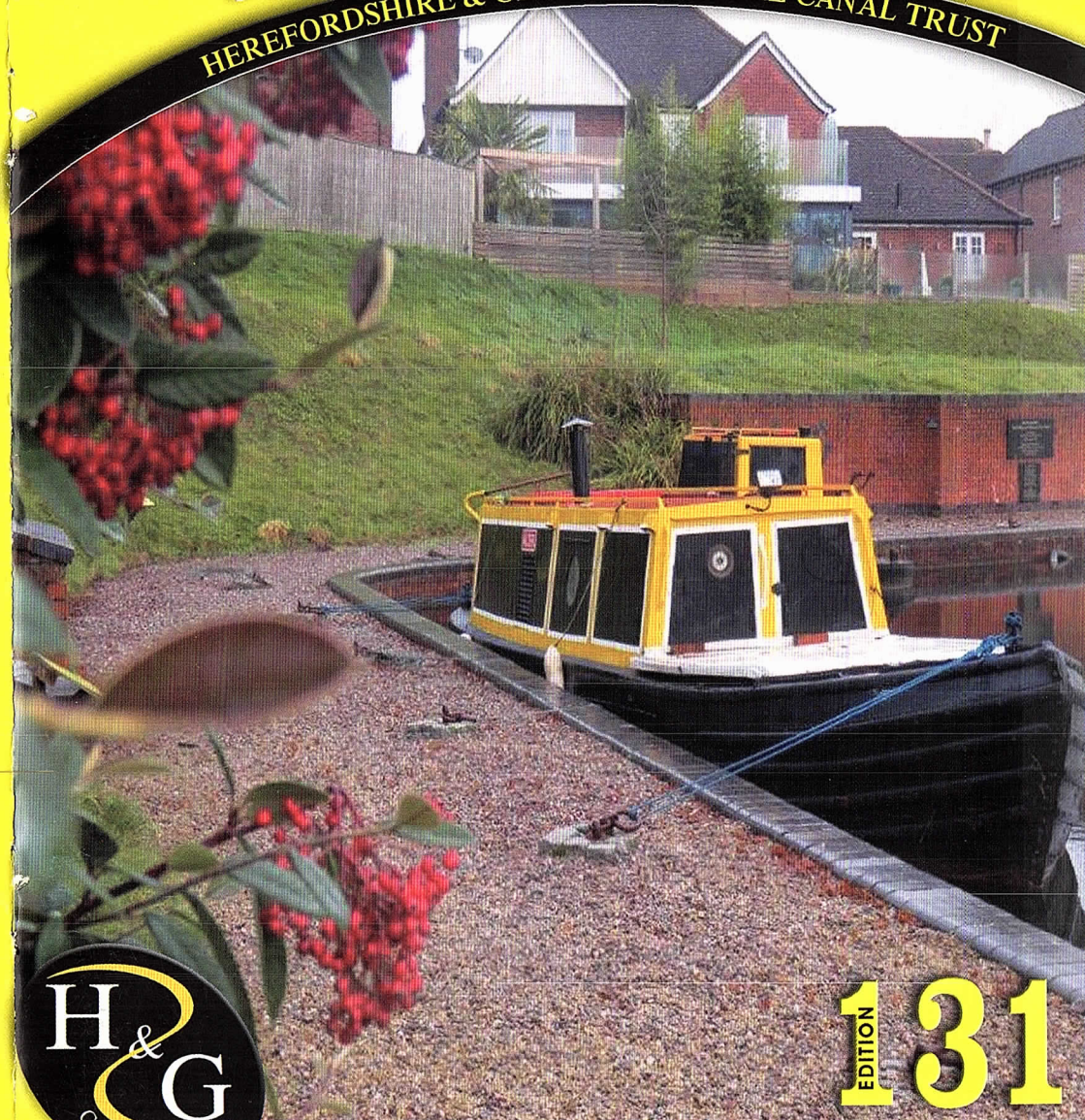


£1 free to members

Spring 2017

The Wharfinger

HEREFORDSHIRE & GLOUCESTERSHIRE CANAL TRUST



H & G
CANAL TRUST

131
EDITION

REBUILDING A SUSTAINABLE CANAL BETWEEN HEREFORD & GLOUCESTER

Working together in the present to revive the past and secure a better future.®

Who does what ...

To get in touch see "Contacts" inside the back cover.

Vice Presidents:

R. E. Barnes TD, Richard Graham MP, Mark Harper MP, Duff Hart-Davis, James Hervey-Bathurst CBE DL, Sir John Lushington Bt, Jesse Norman MP, Diana Organ, Tim Parker, Bill Wiggin MP

Council of Management

Committee: Nigel Jefferies, Maggie Jones, Wilf Jones, John Kilpatrick, Cliff Penny, David Penny, John Pritchard

Company Secretary: Dr Caroline Buffery
IWA Branch Liaison: Maggie Jones

H&G Canal Sales & Promotion

Hereford: Janet Moul, Barbara Moses, Ray Moses, Penny Shetliffe, Pat Skeet, Heather Worth
Gloucester: Margaret Holder, Maggie Jones, Janice Lyall, Pat March

Over Festival Committee: Vicki Brown, Hannah Davis, Margaret Holder, Maggie Jones,

Health & Safety

Wilf Jones, John Pritchard

Membership services

Secretary: Nigel Jefferies
Gift Aid: Janet Moul

Website Development

Team Leader: Maggie Jones
Web Master: Nick Dymott
Committee: Ted Beagles

Digital Photo Archive: Colin Dymott

Social Events

Organiser: Janet Moul
Support: Nigel Jefferies, Stephen and Gillian Chowns

Volunteer Newsletter Hannah Davis

Talks and Walks

Co-ordinator: Nigel Jefferies
Dick Skeet, Ted Beagles

HEREFORDSHIRE & GLOUCESTERSHIRE CANAL TRUST

Working together in the present to revive
the past and secure a better future.®

Restoration Sites

Restoration Chairman: Wilf Jones
Hereford Roving Team John Pritchard

Aylestone

Site Leader: Brian Fox

Kymin East

Site Leader: Wilf Jones

Yarkhill

Site Leader: Chris High
Deputy: Paul Hatt

Oxenhall

Site Leaders: Brian Fox,
Deputy: Geoff Hopper

Newent (Sat)

Site Leader: Wilf Jones

Moat Farm

Site Leader: Martyn Tilford

Over and Vineyard Hill

Site Leader: Ted Beagles

Press Liaison

The Wharf House

The Wharfinger

Editor: Cliff Penny
Deputy Editor: Maggie Jones
Design/Production: Maggie Jones
Proof reading: Becca Moul
Advertising: The Wharf House
Distribution: Janet Moul, Barbara Moses

THE WHARF HOUSE

OVER • GLOUCESTER • GL2 8DB

Waterside Restaurant, Tea Rooms, Visitor Centre, Superior B&B,
Telephone 01452 33 2 900 www.thewharfhouse.co.uk

All profits from The Wharf House and Malswick House will be used for
the promotion and restoration of the Hereford & Gloucester Canal.

Events: Tessa Berry, Hannah Davis

Mill Barn Project:

Delivery Manager: Janice Lyall
Architects: Roberts Limbrick

Legal & Project Development Team

Commercial & Technical Director: David Penny
Legal: Nigel Johnson
L&P Development Officer: Dr Caroline Buffery
Legal Advice: Roz Rutter, Simon Freeman,
No.5 Chambers

Business Development: David Penny
Planning Consultant: Green Planning Studio
Engineering: Thomas Ashworth, Tony Gee & Partners
Delivery co-ordinator: Wilf Jones
Accounts: Debbie Royston

Artist in residence.

page

29



News from
The Wharf House

page

11

Contents

page

- 3** Council of Management report:
Stepping up a gear!
- 5** New role of Charity Fundraiser(s)
- 6** News from L&PDT: Mill Barn/
Planning partnerships/Leadon
Hydro
- 7** Formal Notice Annual General
Meeting
- 7** Membership of the H&G Canal Trust
- 8** Fundraising: Anonymous Bequest/
Postage Stamps/Do you shop online?
- 9** Grand Holiday Draw 2017
- 11** News from The Wharf House and
Malswick House
- 12** Projects in progress
- 14** Volunteer focus
- 16** Maintenance matters
- 17** Would you like to get involved?
- 18** The RAF Gardener
- 20** Social Evenings at The Royal Oak
- 21** Heritage boats
- 22** Oxenhall to Newent
- 26** Winter Bazaar report
- 27** Outings 2017
- 28** News from the National Waterways
Museum Gloucester
- 28** IWA Social Meetings and Events
- 29** Artist in residence: Janice Lyall
- 31** Sailing4disabled
- 33** Gloucester Model Boat Club at Over
- 35** Not quite the last page!
- 35** Advertising in The Wharfinger



page

31

Sailing4Disabled



page

21

Heritage
boats



page

26

Winter Bazaar
report

page

16

Maintenance
matters

Some regular readers of **The Wharfinger** will be missing the regular editorial from Cliff Penny, our long-serving editor. Unfortunately, Cliff is unwell and has been advised to take a complete rest and so for this edition Maggie Jones is fulfilling her assistant editor role to ensure our Membership is kept updated with our work. *We all wish Cliff well for a complete recovery.*

Thank you >>> **MJ**

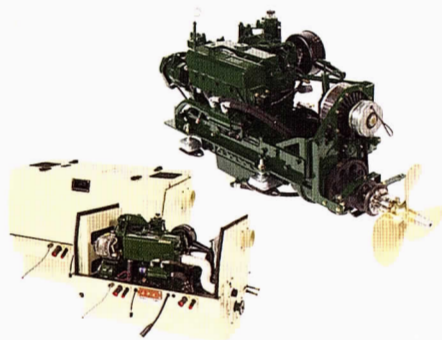
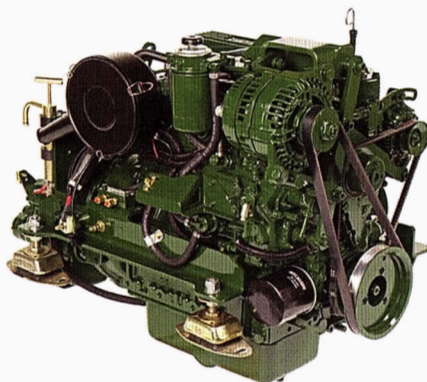
Cover image:
Alder moored at Over
Basin. – Ted Beagles.

Your needs . . .

BETA MARINE

Seagoing Saildrives Inland Waterways Marine Generating Sets Spares & Support

- 30 years of customer centred focus, listening to needs & delivering long term value solutions.
- Specialists in customer advice & support at all points of a products voyage.
- Superb after-sales service via our network of approved engine installers and service centres.
- Extensive range of 14 to 115 HP keel cooled propulsion engines with mechanical or hydraulic gearboxes.



- Super silent acoustic housings, 3.5 or 5.0 kVA travel power, bow thrusters and hybrid propulsion options available.
- Keel cooled Generating Sets <50 kVA with or without super silent acoustic housings.
- 5 year self-service warranty.

. . . our tailored solutions
delivering reliability and peace of mind

BETA MARINE

www.betamarine.co.uk

Tel: +44 (0)1452 723492

Email: sales@betamarine.co.uk



Stepping up a gear!

In the last Wharfinger we reported a review was being made of the organisation and management of the Herefordshire & Gloucestershire Canal Trust (H&G CT).

We also reported in March 2016 that Clive Weston, a member of the H&G CT, took up the challenge of guiding this reorganisation using his past Management Consultant skills. Like so many of the other volunteers that we rely on for the success of the restoration he was doing this in a voluntary capacity. Working closely with the members of the CoM, Clive led us through our challenges as well as our successes in taking the H&G CT forward and stepping up a gear in our abilities.

The challenges we have in a changing volunteer market place are clear to us all and a new draft structure added the enhanced or missing skills into our 'wish list' and acted to reaffirm what we had assessed ourselves a couple of years earlier in a similar internal process. In a business this may be relatively straightforward to simply decide the team you require and recruit. Obviously working with volunteers is a very different ball game from that of working with managers and employees in a paid business. Many of our volunteers put in a tremendous amount of time and commitment into furthering the aims of H&G CT, but there are limits as to how far or fast their commitments will go and the levels of responsibility that they wish in what will one day be a multi-million pound business. With the fantastic pay of zero on offer, there are limits to how many and how rapidly new recruits that meet expectations can be recruited.

Sadly, for various reasons, Clive decided that what he had to work with would not advance at the speed he was used to in the corporate world and chose to follow new challenges elsewhere having renewed our vigour and focus to step up a gear. We wish to thank him for what has been achieved and wish him well.

John Hammond and partner Carolyn Pascall felt they should step aside at this point also. They had both contributed much over the last few years. John did a grand job in picking up the treasurer's reins after the loss of our long serving treasurer Liz Connors. Carolyn had been instrumental in delivering articles in the national and some local press; almost single handed delivered the Eastnor event; as well as her work in making the bid to get the last 25 years of our volunteers commitment to the canal and its unique vision for a sustainable future recognised for their tremendous work on sites and behind the scenes with both The Queen's Award and Green Apple Award. We say a big thank you and wish them both well in their future pursuits. Their recent valued support adds to the phenomenal contributions that have been made over the last 30 years by our many volunteers from pen to spade. It is volunteer commitment, either brief or ongoing, large or small, that makes the H&G CT the very strong and nationally highly respected body it is today.

Next steps for the H&G CT?

There is a smaller but strong Management Team, keen and able to step up a gear to further the aims of the H&G CT working closely together as a team. The management training from Clive was of great benefit; it

UP TO 70% OFF OUTLET SHOPPING

Quality restaurants, bars
and a 10 screen cinema

Carluccio's

☆cineworld

Zizzi
Restaurants

M&S
OUTLET

FRIDAYS

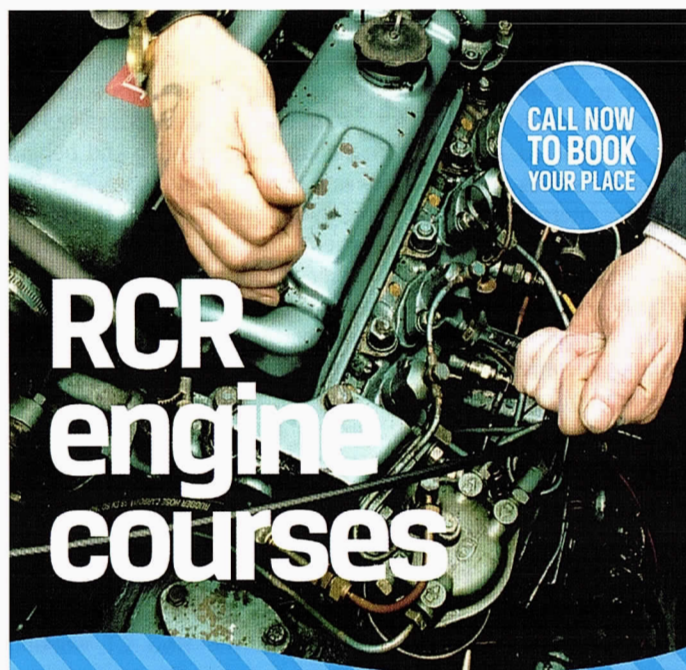
JAEGER



Gloucester Quays

Experience More

gloucesterquays.co.uk



CALL NOW
TO BOOK
YOUR PLACE

RCR engine courses

RCR is about more than providing a breakdown service, we strongly believe in education and development of skills for boaters. Our courses are designed for current and potential boat owners who would like to learn about basic boat engine maintenance and the electrical systems on their vessels. It's ideal for all backgrounds and those wishing to develop their knowledge and skills further.

FOR MORE INFORMATION CALL

01785 785680

gave us new ways to view our work and new ideas to pursue and reinforced the value of our own earlier internal assessments. We have also considered the many challenges H&G CT faces in accelerating that progress.

We looked at our strengths in the previous Wharfinger and those still hold good today; the protected line; successful public enquiries; successful partnerships; development of significant capital assets giving a perpetual income; being unique in our vision for a sustainable self managed waterway; and the high esteem with which we are viewed by other waterways organisations (independantly ranked as No.3 in the UK ahead of larger Trust's), etc etc.

Our plan to move to a two-tier structure with a Board of Trustees and an Executive Board has begun with a number of people applying for the key role of Chief Executive. Senior head-hunter, John Macleod, is assisting us in finding the right person for this role. The first task for the chief executive will be to work with CoM to refine our ideas for the new structure.

The Role of Company Secretary

We are pleased to announce that Dr Caroline Buffery has agreed to fulfil this legal role in line with the H&G CT's Articles of Association.

A new Treasurer

Council of Management are in discussions with a number of people for this important role, in the meantime John Hammond is carrying out this role for the next few weeks.

As always we will keep you updated in **The Wharfinger**, in the e-newsletter and on our website.

»» MJ

new role of ... **Charity Fundraiser(s)**

HEREFORDSHIRE & GLOUCESTERSHIRE CANAL TRUST

The highest priority item the CofM identified it needed was to dramatically strengthen our fundraising. This especially comes into focus with a number of new projects that L&PDT will be delivering for the Canal Trust to take forward in 2017.

In order to gain new lengths of our Canal we need to increase the Land Fund pot. Once we have the land we then have to fund all the work required to deliver what we are all here for a Canal in water. To this end, one of the most vital roles on this executive board will be that of an experienced Fundraiser. We are looking for someone – indeed a team – with excellent communications skills and the enthusiasm to drum up support for our organisation from many different sources.

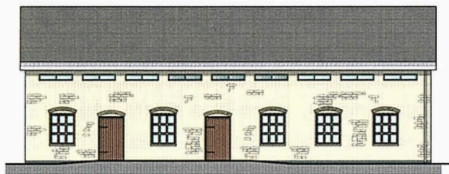
There will be several different roles from fundraising from individuals or Charitable Trusts; to corporate sponsorship; or bidding for traditional grants from the vast range of funding bodies both large and small. The ability to network is paramount for this job, since success in the role depends heavily on being able to forge positive relationships with our supporters. Fundraisers also work to raise awareness of the charity's work, aims and goals.

We need volunteers with creativity, imagination and a proactive attitude towards fundraising, with drive and enthusiasm to carry out projects to conclusion. This role could be totally voluntary or maybe the successful applicant could build in a way of becoming self-funding in successful bids. If you are an experienced fundraiser or bid writer or know of someone keen to spare time and add value to H&G CT we would be pleased to hear from you.

To contact us for more details or express an interest in this role please email the H&G CT via the website.

Thank you

Mill Barn



We are really delighted that Janice Lyall has taken on the challenge to oversee all aspects of delivery of this crucial project for the Canal Trust. Many will know Janice as our 'artist in residence' providing the fabulous artworks that adorn both **Malswick House** and **The Wharf House**.

Few will appreciate that Janice's career has actually been based in Risk and Project Management at senior level through a portfolio of major industries from the Coal Board to the Nuclear Industry. It is this highly appropriate skill base that Janice is now set to use to our advantage to ensure that Mill Barn is delivered, and just importantly all the funding for it is secured. You will be seeing a lot more about this in coming issues of **The Wharfinger** from Janice as she develops a team to take this critical project for the Canal Trust forward and build the partnerships with stakeholders that are critical to deliver this and indeed many other projects in the future.

»» **DRP**

Planning partnerships

There are several projects in the pipeline that keep us busy here from the major developments at Ledbury and Holmer to long term schemes in discussion with partners. Rarely are these simple or straightforward to deliver but persistence does pay off with schemes such as Over and Dymock delivering the firm foundations for the Canal Trust to move forward.

»» **DRP**

Dymock an example of a winning partnership



David Thomas (GP Thomas), David Penny (H&G CT), Garry King (Two Rivers Housing), Dorothy Brooks, Terry Ball (Parish Council).

Leadon Hydro



This is an exciting Project here at Over to secure our long term water supply for the canal and generate all the electricity required for both **The Wharf House** and **Mill Barn**. Our first round consultancy reports will be on the desk in the next month and we very much look forward to this being a project that follows on the ground after the completion of the Mill Barn shell and whilst it is being fitted out. The Leadon scheme forms the basis of various partnerships that we carry forward into the much larger Llanthony Hydro and Flood Relief scheme which we continue to work on in the background.

»» **CB**

FORMAL NOTICE

THE HEREFORDSHIRE & GLOUCESTERSHIRE CANAL TRUST 2017 ANNUAL GENERAL MEETING

will be held on Tuesday 15 July 2017 at 7.30pm
at **Malswick House**, Newent GL18 1HE

This is the formal notice of the 2017 AGM to give Members the opportunity to make a note in their diary. The Agenda and Annual Report will be in the next edition of **The Wharfinger**.

In accordance with the H&G CT's Articles and Memorandum of Association, those members of Council of Management who are retiring on rotation but offering themselves for re-election do not require to be formally nominated to serve an additional term.

New nominations

New nominations to serve on Council of Management are welcomed. Requests for a nomination form should

be made by the member making the nomination by email via **contact us** on our website h-g-canal.org.uk. Nominations should be submitted in the period between 28 days and 7 days prior to the AGM.

Proxy voting

Every member who is entitled to vote at an AGM may appoint a proxy to vote in his/her stead. A proxy must be someone entitled to vote at the AGM. Proxy forms are also available via **contact us** on our website h-g-canal.org.uk and should be completed, signed and returned to arrive at least 48 hours before the start of the AGM.

Thank you



Membership of the H&G Canal Trust

A great gift for the historian, walker, boater or environmentalist in your life! A gift that lasts all year!

The membership pack includes:

- A short history of the Trust and its restoration work
- Details for those members who wish to be more actively involved with the work of the H&G Canal Trust
- **The Wharfinger**: 4 recent quarterly magazines
- H&G Canal Trust Land Fund details
- H&G Canal Trust pencil
- H&G Canal Trust car sticker.

H&G CT UK Membership Rates

	Annual	Life
Individual	£10	£200
Joint/Family	£15	£300
Senior Citizen	£7.50	£115
Joint Senior Citizen	£10	£150
Corporate	£25	£500

Available to callers at The Wharf House or download a form from our website and send your and the recipient's details, together with the relevant membership rate (*see chart*) to the H&G Canal Sales and Promotion mail order address (*inside back cover*). Please include your telephone number in case of any queries. Members receive a further four future editions of **The Wharfinger**.

fundraising

As a small charity with big ambitions we always have to find the means to carry out the Canal restoration and associated activities. Here are some of the latest ways we are raising funds and ways in which you may be able to help too?

anonymous bequest

H&GCT have recently received an anonymous bequest for £20,000 towards the **LAND FUND** from a supporter of our Restoration.

This is a great boost to the **LAND FUND** and very much welcomed.

Thank you!



H&G CT

LAND FUND

more land = more restoration

The **LAND FUND** will provide the means to obtain the crucial sites along the line of the Canal where there is no new development proposed or where we cannot acquire the line of the Canal by other opportunities. It is a vital fund to help us eventually restore the full length from Gloucester to Hereford.

visit www.h-g-canal.org.uk
then click 'About the Trust'
then click 'Land Fund'

postage



Thanks to all who sent in stamps during 2016, your generosity is much appreciated and, as a result, we are now very likely to reach our next milestone of £2,500 raised for the Land Fund, during early 2017.

In the autumn we received a large collection of Channel Islands and Isle of Man stamps, this will be going to auction in early February and we hope that it may achieve a three-figure sum to significantly further boost the fund – so fingers crossed!

Remember, stamps, albums, old postcards, in fact anything vaguely philatelic, can be turned into cash for the Trust, so please keep them coming.

Here's to a productive 2017 for all in the H&G!

Stamps can be taken to a Social Evening or other H&G CT event – or to **The Wharf House** or **Malswick House**. Or send them direct to:–
H&G Stamps, c/o Steve Bence, 35 Lime Road, Southam, Warwickshire, CV47 1EQ.

Please keep those stamps coming.

Thank you >>> **SB**

do you shop on line?



Please register with **Give as you Live?**
Just type into your browser

<http://goo.gl/12c9xl>) (it's a shortcut to
www.giveasyoulive.com/join/handgcanaltrust)

Then the H&G CT will receive, at no cost to you, a percentage of the purchase value from any of the many retailers who have signed up to the scheme to support charities such as the H&G CT.

Grand Holiday Draw 2017

H&G CT Grand Holiday Draw 2017

Friends and colleagues will be eager for a great holiday for just £1!



HEREFORDSHIRE & GLOUCESTERSHIRE CANAL TRUST

GRAND HOLIDAY DRAW 2017

1ST PRIZE

NARROW BOAT HOLIDAY for FOUR

ONE WEEK PRIOR TO 31/5/18 Excluding Bank Holidays. Donated by Black Prince Holidays

2ND PRIZE

ONE DAY'S BOAT HIRE

To be taken in 2018, excluding Bank Holidays. Donated by ABC Leisure Group

3RD PRIZE

ONE NIGHT BED & BREAKFAST for TWO

at The Wharf House, Over Wharf, Gloucester. Donated by The Wharf House Company

Promoter: Mrs J. Moulton, 18 Coningsby Court, Coningsby Street, Hereford, HR1 2DF
Prizes to be drawn at the September Social at Royal Oak, Much Marcle on September 19th 2017. Registered under the Gambling Act 2005.

TICKETS £1 each

IT ALL
H&G CT
COUNTS

As reported in the last edition of *The Wharfinger*, the Grand Holiday Draw 2016 was another successful year raising **£2,500**. Let's make this year even better!

Once again this year we have some great prizes!

The prize winners will be drawn at the Social Evening at The Royal Oak, Much Marcle, on 19 September 2017. Our thanks to **Black Prince Holidays**, **ABC Leisure** and **The Wharf House** for donating the Holiday prizes – so every pound raised is a pound towards restoration of the Canal.

This year again we have sent you two books of tickets to sell to family and friends. More books can be sent to you if required. Please contact Janet Moulton (see below).

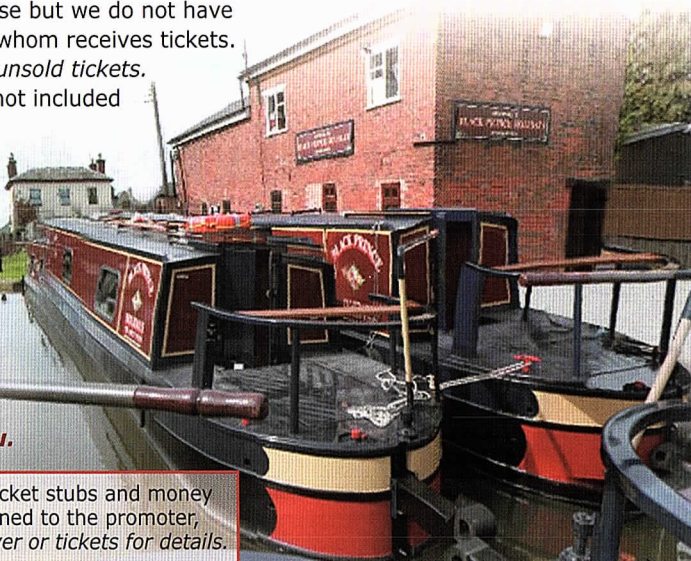
We appreciate that some recipients are not prepared to buy or sell draw tickets – we apologise but we do not have the resources to be selective in whom receives tickets. *There is no obligation to return unsold tickets.*

In order to save costs we have not included tickets in copies of

The Wharfinger sent to Councillors, Local Authorities and businesses.

If you wish to support us please contact Janet Moulton on 01432 264 366 and she will be delighted to send you some tickets. ***Thank you.***

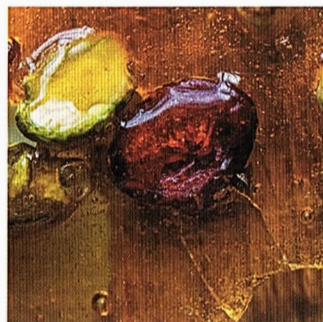
Please Note: All completed ticket stubs and money from their sale should be returned to the promoter, **Janet Moulton**. See inside back cover or tickets for details.



THE WHARF HOUSE

AWARD-WINNING WATERSIDE RESTAURANT WITH ROOMS

MODERN BRITISH AND EUROPEAN CUISINE WITH A TWIST



Tasting and à la carte menus / Afternoon Tea £16.50 pp
Lighter lunches including paninis from £4.50.

01452 332 900

www.thewharfhouse.co.uk

Over, Gloucester, GL2 8DB
enquiries@thewharfhouse.co.uk

Directions: Turn off the A40 at traffic lights 250 yds west of
Over Roundabout (junction A40/A417). GR SO 816197

MALSWICK HOUSE

TRADITIONAL INN • FOOD • FUNCTIONS

A Traditional Country Inn situated on the edge of
Newent in the historic Forest of Dean, Gloucestershire.



01531 822 634

www.malswickhouse.co.uk

B4215, Newent, GL18 1HE

enquiries@malswickhouse.co.uk

All profits from The Wharf House and Malswick House will be used for the promotion and restoration of the Hereford & Gloucester Canal.

news from THE WHARF HOUSE

The Wharf House in 2016 saw its most successful year yet with the seven en suite rooms, summer bedroom occupancy levels lasting long into December.

Christmas, as always, was popular at The Wharf House. Local businesses and families joined our staff in celebrating the season of goodwill throughout December. The restaurant has again retained its AA 4 star Gold bedroom status and AA Red Rosette going in to 2017. The Wharf House has been featured in one of the leading food magazines in the south west; following on from a wonderful write up about apprentice chef Maisy, 'Crumbs' has published an article on our Front Of House, Tessa (featured right).

Looking forward into 2017, the hardworking Volunteers will be working on the ground floor room Aylestone putting in the French doors opening the room out onto the new garden area. A beautiful new feature for our customers going into the spring and summer.



Front of house, (and lots more besides!) Tessa featured in the south-west food and drink magazine *Crumbs*.



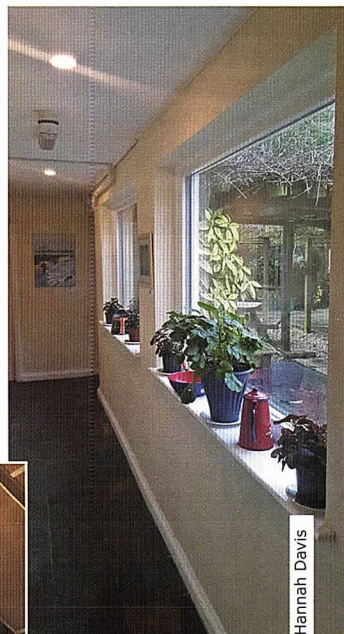
... and news from MALSWICK HOUSE

2016 saw Malswick House undergo an impressive series of face lifts; new triple glazed windows have been installed in the hallway between the bar and the toilets - improving heat efficiency. The conservatory roof has been fully insulated and boarded making it a really warm and comfortable space and our customer's most requested place to enjoy a cosy Sunday lunch. The popularity of the traditional Sunday Lunch at Malswick House has been much anticipated, if you fancy giving it a try book now to avoid disappointment!

»» **Hannah Davis**



Right: the conservatory roof has been fully insulated.



Above: new triple glazed windows in the hallway.

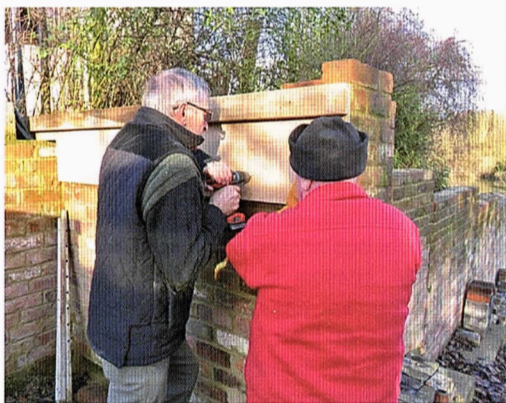
Hannah Davis

projects *in progress*

Here are some of the projects that our Volunteers are currently undertaking at Over Basin and Newent Station:

'The Great Wall'

Progress on the great wall below **The Wharf House** has slowed a little recently, awaiting the infill behind the wall; this is needed to provide lateral support behind the side walls of the cycle cave in order to support the brick arch roof. In the meantime casting of reinforced concrete 'L' beams to transfer the roof loading to the side walls, is underway. After the roof is completed we shall lay the capping bricks to the wall to finish the job.



Bob and Ivor erect the L-shape shuttering.

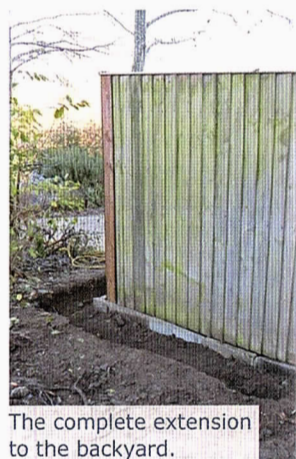
Newent Station platforms

Work has continued at Newent Station. Volunteers have been removing spoil and infill to expose the platform walls to assess the what is required to repair / restore them.

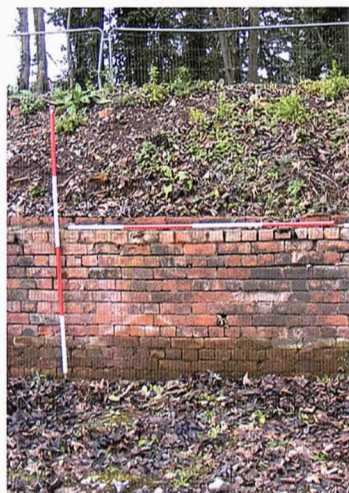
Each platform is approximately 100 metres long, and to fulfil the Trust's vision of the Canal running between the platforms we have to ensure the walls are sound and ready to be increased in height and waterproofed. Engineers are currently working on the design and specification to enable a satisfactory solution to the challenge.

>>> Wilf Jones

The pictures below show the exposed wall with ranging poles to assist with any work being completed by historians or archaeologists.



The complete extension to the backyard.



Overflow weir

We have recently started to reinforce the bank at the back of the overflow weir to protect against water erosion. This initially involved clearing the natural vegetation of nettles and brambles from the bank including roots and preparing a good even surface of "top" soil on the clay. Subsequently a layer of "Trinder" open weave geotextile material, will be put down and finally buried in a further layer of top soil sown with grass seed. The small roots of the grass are able to grow through the geotextile material to provide a stable natural surface for water run off from the weir.



Preparation for the overflow bank reinforcement.

Ted Beagles

Quick work!

Backyard expansion

"We need more backyard space" said David. A plan was quickly drawn up and the area cleared of trees, before carefully dismantling the necessary part of the existing fence so that all parts could be reused. Digging out of the tree roots for a concrete base and fence posts was labour intensive, but by the end of day one the concrete base was down and posts concreted in place. The following week saw the fence completed before lunchtime, and the extended yard ready for use. "What finished already" said David, "brilliant that was quick!"

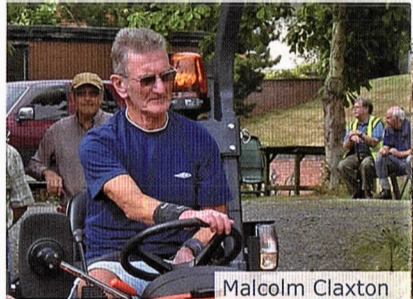
»» Ted Beagles



Alan McBride

volunteer focus ...

Over Basin is our largest group of volunteers with a regular weekly attendance of around fifteen in the dedicated team led by Ted Beagles. Malcolm Claxton is one of the gang who plays a crucial role in regular mowing and ensuring that the site is kept tidy for our visitors to enjoy. Maggie Jones asked him to speak about his role.



Malcolm Claxton

Malcolm, how long have you been volunteering with the H&G CT?

My first day was 23 June 2007, so coming up for ten years.

What attracts you to the waterways?

The peace and tranquillity plus the abundance of wildlife and flora are second to none. The canals were a major force in the industrial revolution, which makes them an integral part of our history. Engineers like Telford and Brunel and, in the case of the H&G, Ballard, were way ahead of their time. The aqueducts, bridges and locks, which they designed, all built using manual labour, were simply stunning. It is also very interesting to read about the manner in which the different companies used their boats to move goods around the waterways.

What drew you to volunteering with the H&G CT?

Before moving to Cheltenham, I had limited involvement with the restoration of the Wendover Arm of the Grand Union Canal at Tring in Hertfordshire. I knew nothing about the H&G Canal and it was only as a result of visiting the tourist information centre in Cheltenham that I learned of its existence. Having volunteered with the Wendover Arm Trust project it seemed a natural progression to become involved with the H&G. The rest is history.

What do you enjoy about working with the team at Over?

Team is the appropriate word. We are a team and as such work well together, even when not involved on the same project. Everyone gets on well which makes for a great atmosphere.

Tell us about some of the main duties you carry out as a volunteer?

Members of the public regularly visit the site, so keeping it looking as clean and tidy as possible is important. Much of the work involves scrub clearance and hedge cutting, normally with loppers and secateurs. The more dense scrub and bramble is taken care of using the flail attachment on the Kubota. From time to time the canal banks need a trim and here again the flail on the Kubota is the answer. By far the most time consuming task is grass cutting, which during the growing season is a weekly event. Our old but trustworthy Roper sit on mower takes care of this task.

As one of the main drivers of the Kubota tractor what do you feel is its main benefits?

The bucket on the front is probably the most beneficial of its capabilities, giving us the ability to lift and move heavy loads or items around the site. The days of manually moving barrow loads of bricks, road scalping or other material across site are a thing of the past. The flail attachment although not really suitable for cutting grass, is a great benefit when removing dense scrub and bramble or tidying the banks of the canal.



Malcolm steers the Kubota along the towpath.

The four wheel drive option as also useful on some of the steeper or less firm areas of the site.

What was your work before retiring from paid employment?

My first job was with an electronics company as a junior laboratory assistant (fancy name for tea boy). Electronics was not for me so I transferred within this company to their machine shop, operating lathes, milling machines & power presses. This gave me a good grounding for my next job with a woodworking machine company, followed by a spell with a hosiery and textile machine company, and ending up as an office based sales engineer in the export department of an air conditioning and ventilating company. I also worked for a short time as a night security officer and lorry driver.

What would you say to someone who is considering volunteering with us?

Definitely give it a go. The team is a very friendly one and works well together. The

work is varied and interesting, with the opportunity to get involved with jobs you may not have previously undertaken. There is however no pressure to do things with which you are not happy or feel confident about undertaking. Training by qualified volunteers will be given wherever necessary. The site is open every Wednesday between 08.30hrs. – 1600hrs. There are no fixed hours. Choose your own hours, arrive and leave as you wish and turn up whenever you wish.

What is your proudest volunteer moment?

Probably, steering Alder with Timothy West and Prunella Scales on board when they performed the official opening of the Vineyard Hill extension.

What would you like to see happening with this Canal Restoration?

It would be good to see the Canal extend on from Vineyard Hill but I know there are other stretches of the Canal that will be prioritised first.

»» MC

HEB HAYWARD & Co.LTD

Sheet Metal Work, Welding & Fabrications

We are a family run business established over 50 years ago, specialising in sheet metal work and fabrications in most metals including mild steel, stainless steel, aluminium, titanium, copper and brass.



- Items can be manufactured to your own drawings or from instructions.
- Quantities from 1 to 10,000.
- Sizes can range from a washer right up to fabrication of 1 tonne.

We have a wide client base with particular involvement in hydraulic press, concrete, materials handling, feed and flour milling industries.

It has been our pleasure in supporting the Herefordshire and Gloucestershire Canal Trust for over 20 years, and we will continue *to work together in the present, to revive the past, and secure a better future.* © H&GCT

Simon Hayward: 01452 700384, Fax 01452 700740
SHEET METAL WORKS, ASHLEWORTH, GLOUCESTER, GL19 4JJ

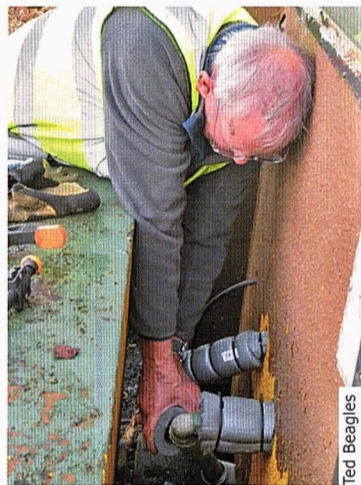
maintenance *matters...*

The H&G CT is keen to keep up with the regular maintenance on every site along the Canal. Here are some of the recent tasks undertaken by our Volunteers:

Kymin

A small team worked off some of the Xmas excesses with a day out at **Kymin**, trimmin' and strimmin'.

As one of the agreed 'maintenance days' we were able to tidy the length of the towpath. The team also removed the logs from the fallen tree branch which a small group had retrieved earlier and cut up. The branch had laid across the canal into the wildside (off side) bank. >>> *Wilf Jones*



Ted Beagles

Yarkhill

Typical winter work for the **Yarkhill Team** – vegetation clearance at the lock end of the canal prior to the winter water encroaching. This was then followed by a burn up of the accumulated rubbish. >>> *Chris High*



The lock end after maintenance.



The Yarkhill team light a bonfire to burn the debris after clearing the vegetation.

Chris High

Over Basin

At Over, the volunteers tackled the usual winter chores of site maintenance such as weeding and mulching and fixing a frozen tap in the site hut. >>> *Ted Beagles*

Left: Mike lags the pipes to the site hut to fix the frozen tap.



Ted Beagles

Left: Peter mulches The Wharf House gardens.

Above: Pat weeds the slipway (the two bystanders lent a hand too, honest!)

Would you like to get involved?

You will be made most welcome on any of our sites, please contact:

Hereford Roving Team – Thursdays

John Pritchard on 01432 272972
johnpritchard32@btinternet.com

Yarkhill – Thursdays

Chris High on 01568 615 575
chris@chrishigh.plus.com

Oxenhall – Tuesdays

Brian Fox on 01432 358 628
briandfox74@gmail.com

Newent Station – Saturdays

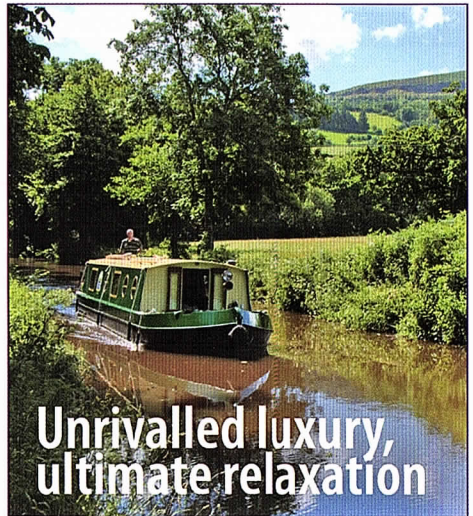
Wilf Jones on 01452 413 888
wilfredjones506@gmail.com

Moat Farm – Tuesdays

Martyn Tilford on 01452 790 358
martyn@tilford.free-online.co.uk

Over Basin/Vineyard Hill – Wednesdays

Ted Beagles on 01452 522 648
tedbeagles@blueyonder.co.uk



**Unrivalled luxury,
ultimate relaxation**

Unwind however you choose, and for as long as you like, in the splendour of the Brecon Beacons on the Monmouthshire and Brecon Canal.

To know more: 01873 858277

www.beaconparkboats.com

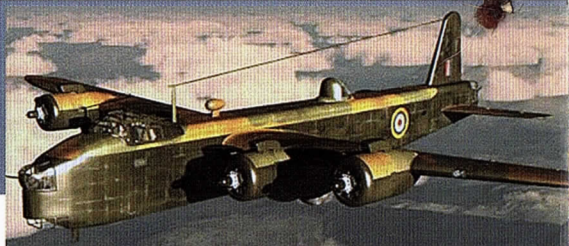
The RAF gardener:

the story of a wartime escape.

– Maggie Jones

Those attending the Social Evening at the Royal Oak were treated to something completely different in January: a gripping wartime story of intrigue, espionage and escape!

The story was told by Gillian and Stephen Chowns, two of our own members who usually greet you at the door. This time they took centre stage and told the story of Gillian's father, who, during the war, was a navigator on a Stirling bomber. He was shot down near Lyon in August 1943 and hidden by the Maquis for four months and eventually escaped over the Pyrenees and returned to England in January 1944. Once or twice during his odyssey he was disguised as a gardener, and is described as 'the RAF gardener' in a book about the Maquis in that part of France.



Gillian and Stephen retraced his journey and met members of the families who had helped him, when they visited France and Spain in April 2014.

Whilst Stephen narrated the story he paused for Gillian to read from her father's diaries of the amazing escape. They both had the audience on the edge of their seats. A great presentation!

Thank you. >>> MJ

Do you have a story to tell or know of someone with an interesting hobby or canal related topic they would share with us? Janet would love to hear from you. Her contact details are inside back cover.

stationery • leaflets • mailers • posters • folders • programmes • newsletters • brochures • prospectuses • calendars • magazines • books • exhibition panels

PRINT PLUS

01432 272025

126 Widemarsh Street • Hereford HR4 9HN

Fax: 01432 353962 • Email: enquiries@printplushereford.co.uk

www.printplushereford.co.uk



always delivering quality



Social Evenings

at The Royal Oak

The third Tuesday of every month (except December)
at **The Royal Oak**, Much Marcle, HR8 2ND
7.30 for 8pm start.

Please support our monthly meetings, make a note on the calendar and tell your friends and neighbours. We have an excellent venue and interesting speakers on a wide range of topics. Why not share transport and make an evening of it – *everyone is welcome!*

21 March

Russia – from Astrakhan to Moscow via the River Volga

– Penny Platts

We welcome back Penny after her splendid presentation last year.



18 April

Mainly coasters – mainly local

– Peter Evans

Some of the vessels on the Gloucester-Sharpsness and other coastal waters.



16 May

Making the Severn navigable to Worcester

– Steve Goodchild

Focus will be especially on the Tewkesbury area.



20 June

Bees

– Janet Williams

Our wildlife talk this year will tell you all you ever wanted to know about the bees.



15 July

Annual General Meeting

7.30 start at Malswick House



The formal part of the agenda will be following by a presentation about the previous year's achievements.





Everything Canal Boats

*Services from 10 marinas in the UK and
boating holidays from 16 locations.*

- Boating Holidays
- Boat Sales
- Day Boat Hire
- Boat Builders
- Chandlery & Repairs
- Marina Services
- Moorings
- Canalside Holiday Cottages



The Inland
Waterways
Association



Scan Me

www.everythingcanalboats.com

Call Us: 0330 333 0595

heritage boats



Ted Beagles

sailing ... on thin ice!

by Ted Beagles

This winter the main area of the basin has mostly remained free of ice, but the length along Vineyard Hill, receives very little direct sunlight during the winter months and so has invariably been frozen to a thickness of about 10mm.

So, in addition to the usual winter chores of site maintenance such as weeding and mulching and fixing a frozen tap in the site hut, this year has given us lots of opportunities for sailing on thin ice.

One such occasion was the last Wednesday before Christmas, when Terry and Margaret dressed the narrow boat Alder with "Santa and his sleigh, a Christmas tree and a large flag", for a Santa Cruise, which was made much more enjoyable by the accompaniment of the sound of breaking ice: and on the return journey the sound of ice tinkling along the sides of the hull. Similar trips were made by Mr Maysey on the Wednesday between Christmas and New Year.

»» TB



Top: Alder on the Santa Cruise.

Above: Renton moored at Over –

Do you see anything wrong with this photo?



GEOFFREY URCH GARDEN SERVICES

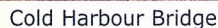
LANDSCAPING
GROUNDS MAINTENANCE
TREE SURGERY FENCING

CONTACT 07950 136074/01531 805040
INFO@GEOFFREYURCHCONTRACTS.CO.UK
WWW.GEOFFREYURCHCONTRACTS.CO.UK





by Brian Fox

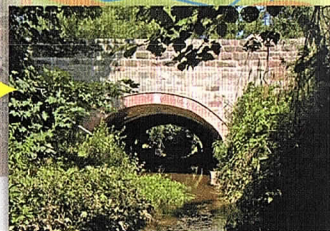
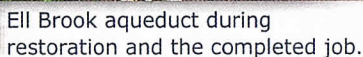


The southern entrance to Oxenhall Tunnel

I have been writing my article on restoration for **The Wharfinger** for 25 years which roughly coincides with the period volunteers have been working at Oxenhall.

Cold Harbour Lane to Winters Lane

In that time we have seen great changes in the area for which we are responsible. Serious work started on the section leading up to the tunnel using an army of volunteers driving dumpers and excavators and then moved south to restore the section between Cold Harbour Lane and Winters Lane.





In 1992 the Canal Society became a Charitable Trust and one of the first objectives was to establish that any work done by volunteers in the future would only be on ground either owned or with some legal agreement for continued access. As that early work was done without any agreements in place it meant that we had to leave it at the work already done at Oxenhall and Monkhide and look elsewhere for restoration work on the canal.



The Canal beyond Winters Lane.

Lock House and House Lock

The obvious place to continue was the section below Winters Lane which included the lock and cottage and here we had some good news. The owner was a Mr. Styles who lived in Bristol and he had originally bought the land from the former British Rail who were planning to demolish the cottage as it was unfit for human habitation. His plan was to restore it with a view to retiring there one day but his plans were thwarted by ill health and vandals who repeatedly broke in and damaged windows and doors. The Trust approached him and he kindly agreed to donate the cottage, lock and about ¼ mile of canal to the Trust. We were now in business with the creation of a proper track up to the cottage as a first priority and then making the cottage vandal proof and selling it on to generate funds for the future restoration of the lock and aqueduct. The annual support of Forest of Dean District Council and a multitude of others provide the crucial few thousand pounds each year which saw the listed lock turn from crumbling ruins to the first restored lock →



Lock House before and after restoration.



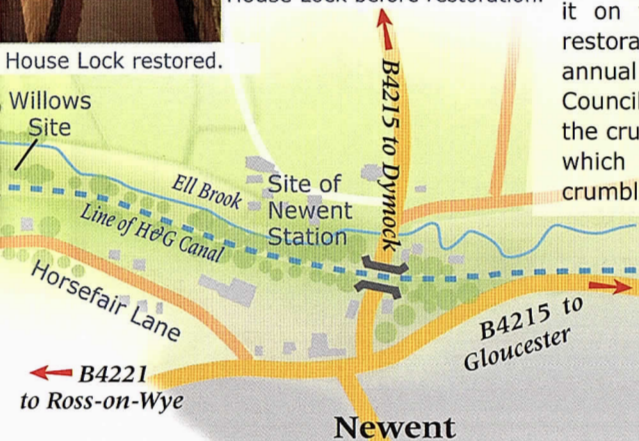
The restored spill weir.



House Lock restored.



House Lock before restoration.



The House Lock completion ceremony.

on the Canal. An early act of support that helped the Trust dramatically change gear and lead on to Over and everything else we see today.

The Willows

In 2004 the Inland Waterways Association donated the money for the purchase of part of the old Willows nursery garden which was up for sale and talks were begun with Gloucester County Council to secure a legal agreement covering the remainder of the



Maintaining the Willows site.




Planning the embankment on the willows site.



An artist's impression of the completed canal.


THE OAK INN
Staplow HR8 1NP
01531 640954



**A VERY WARM WELCOME AWAITS YOU AT OUR NEWLY REFURBISHED INN
 OPEN FOR LUNCH AND DINNER EVERY DAY IN OUR COSY BAR AREAS OR RESTAURANT
 GOOD SELECTION OF REAL ALES - GOOD BEER GUIDE 2009 & 2010**

**REAL LOG FIRES, FLAGSTONE FLOORS, OLD BEAMS & HOPS
 PRETTY BEER GARDEN ~ PARTIES CATERED FOR ~ DOG FRIENDLY
 THE ONLY PUB IN HEREFORDSHIRE THAT ABUTS THE LINE OF
 THE HEREFORD AND GLOUCESTER CANAL**

FOUR EN-SUITE B&B ROOMS NOW AVAILABLE
www.oakinnstaplow.co.uk


★★★★★
 Guest
 Accommodation

land down as far as Bridge Street and beyond. So now the Trust have legal access to about a mile of canal land giving the potential for continuing work for volunteers in years to come.

Unfortunately the more canal you restore then the more maintenance there is to keep everything tidy and on lengths where work is planned then clearance of vegetation and other obstacles also have to be planned. The winter months have always been set aside for the continuing work on control of trees and shrubs with major building work in the warmer months but lately there has been less building and more undergrowth management.

Newent Station Site

The exception is the continuing work to clear the debris left by the builders when we took over the land at the old station. With the assistance of the Saturday group of volunteers and Moat Contracting both platforms, each about 110m in length, have now been revealed and the old fences bounding the yard have been removed. Surveys are being conducted to establish what work will be required to restore them (see page 12–13). The point has also been reached where we have cleared the rubbish with the help of our friendly neighbour, Newent Skips, and the materials now left are all usable and we are considering what will be of use to



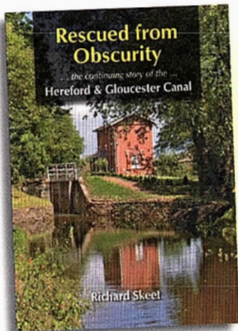
The unearthed railway platforms.



Materials carefully sorted.

the Canal Trust in the future and how we can sell the rest. We also inherited a container full of smaller items but there are not large quantities of anything, but any builders out there who are looking for a few bricks, paviours, slabs, pipes and guttering, etc. then please get in touch with me.

»» **BF**



... to learn more about the history of Oxenhall and other restoration projects ...

Rescued from Obscurity

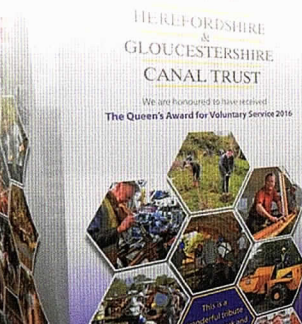
the continuing story of the Hereford & Gloucester Canal by Richard Skeet

200 page paperback, over 200 illustrations and photographs. Price **£10 + £2 P&P**

Please make cheques payable to **Herefordshire & Gloucestershire Canal Trust** and send to Janet Moulton, H&G Sales and Promotion, 18, Coningsby Court, Coningsby Street, Hereford, HR1 2DF. Also available from **The Wharf House**.

WINTER BAZAAR

by Pat Skeet



We were very lucky again, this year, to have a fully booked hall and four people on the waiting list for a stall cancellation. The hall looked bright, colourful and welcoming, with its wide variety of stalls.



The range of goods on sale included beautifully etched glassware and cards made from paintings; hand painted silk scarves; National Trust goods; hand made chocolates; hand made speciality preserves and Christmas puddings; a variety of sewn items; Phoenix cards, wrap and stationery; locally written children's books and paintings and cards from a local artist; silver jewellery; lacy knit scarves and gloves, and candles so skilfully crafted that we had to make sure they weren't sold as refreshments! We

also had an H&G stand selling H&G wares, and displays giving up-to-date information on Canal Trust activity. This is always a bonus at this event.

Judy Street excelled herself by making the best Christmas Hamper yet and this was reflected by the record number of draw tickets sold. It was won by a lucky lady from Malvern Link. The tombola also sold out.

Unfortunately it was wet, but mild so we were able to have the side doors open all day. The number of shoppers was fairly





steadily "quiet" with a surge about 11.30 when we ran out of refreshment seating. There was a warm, friendly atmosphere all day, with superb refreshments made by a very loyal, talented band of cooks.

Many thanks to all who supported us in any way, on what was a happy and worthwhile day, despite the weather.

» PS

Pencil in your diaries for next year:

**Winter Bazaar 2017,
November 25**

St Katherine's Hall, Ledbury.



Jan Long / Dick Skeet



Outings 2017

by Janet Moulton
and Maggie Jones

Why not have a good day out with the H&G CT?

*The Sales and Promotion teams are
expecting to attend the following
events in 2016.*

April 29	Droitwich Boat Festival, Worcestershire
May 28	Dymock Music Festival
June 10	Ledbury Community Day
June 10-11	Hellens Garden Festival, Herefordshire
June 24-25	Historic Narrowboat Rally, Braunston, Northamptonshire
August 19-20	Over Festival, Over Canal Basin, Gloucester
Sept. 9	Oxenhall and Newent Open Day
Nov. 25	H&G CT Winter Bazaar, Ledbury

We welcome additional volunteers to help promote the Canal; no experience necessary – just come and be part of our team – we will do our best to put you at ease and to find a task that you will enjoy. Your admission to the event will be free and we always try to ensure that you have some time to look around.

We would like to attend other local shows so if you know of any please talk to Janet or Maggie.

» JM/MJ

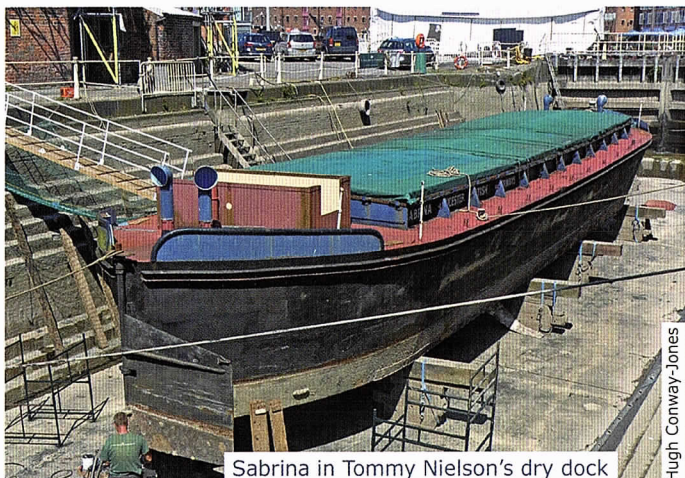
National Waterways Museum

Gloucester

by Norman Mitchell

The Museum closed for a short Christmas break and re-opened on 17th January. The "cracking" opening mentioned in the last edition has been delayed for some time following further discussions regarding the new front conservatory.

The barge Sabrina 5 is currently in Tommy Nielsen's large dry dock receiving remedial work to the hull and conversion works to the hold as an events and learning space. She will be moored in the Barge Arm within the Museum boundary with disabled access and should enhance the visitor enjoyment, particularly for the young. Sabrina 5 is expected back with us in April/May.



Sabrina in Tommy Nielson's dry dock

Hugh Conway-Jones

In the meantime the railway waggons are soon to be moved to new homes with other heritage organisations on loan or by transfer of title. This will ensure the trucks can be properly cared for and maintained as our Museum has no resource to properly care for them. The railway memorabilia here in Gloucester, although they are significant, have limited relevance to the Waterway Museum here.

» NM

Museum Opening Hours:

Until 9 April:

Tuesday – Sunday 11:00-3:30pm
(last admission 2:30pm)

10 April – 5 November:

Monday – Sunday 10:00 – 5:00pm
(last admission 4pm)



The Inland
Waterways
Association

Gloucestershire & Herefordshire IWA Branch

2017 Social Meetings and Events

Non members are welcome.

The Warehouse, Parliament Street, GL1 1HY

Free parking at the Docks, Southgate St. and
St Micheals Square, Brunswick Road, from 6pm

Thursday 2 March 7.30pm

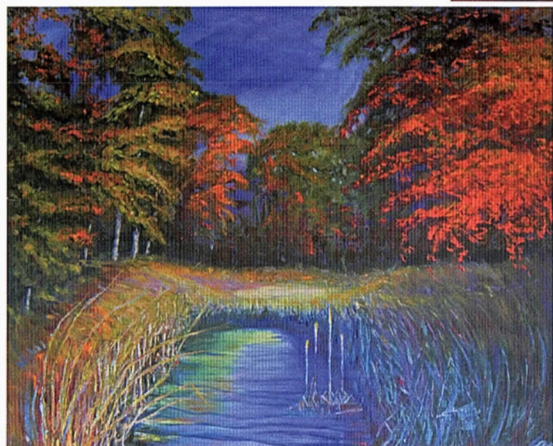
Annual General Meeting
followed by an IWA speaker

Thursday 6 April 7.30pm

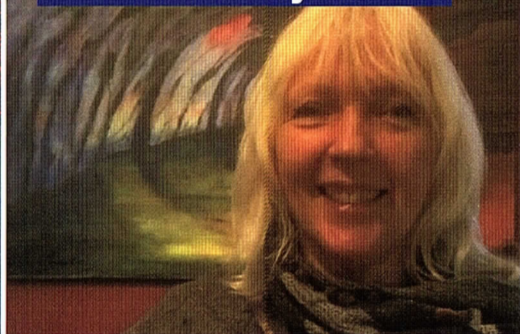
Cotswold Canal Trust

There will be a summer break until September

Further details contact: **Roger Holmes**
email: rogervectis@aol.com 01594 840 316



artist in residence **Janice Lyall**

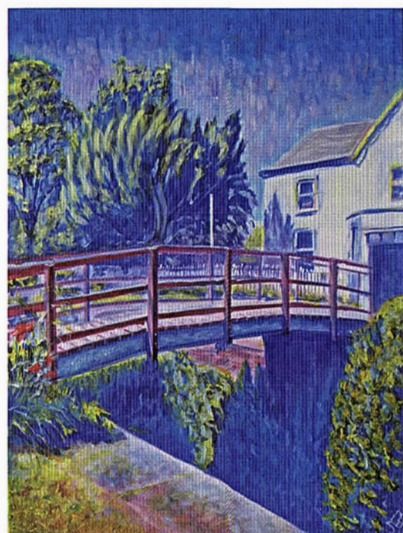


Arriving at **Malswick House** at Newent visitors are welcomed by this large colourful landscape as they step inside.

Janice champions conservation and preservation of the natural environment and its cultural heritage. Through her eye-catching artwork she supports groups which help maintain the high profile of conservation in Britain.

Janice's fine art prints and cards are available via **The Wharf House** with a larger collection available online on her **Myndblue Gallery**: www.myndblue.co.uk.

Right: Llanthony Lock



Below: Inside Oxenhall Tunnel, original canvas can be seen at The Wharf House. Prints and cards are also available there.



Art Club

Janice also runs an Art Club each Wednesday morning at **Malswick House**.

These are held in the conservatory from 10am to 12. An ideal venue as it has plenty of light and of course refreshments for those needing sustenance. The classes are open to everyone so for more details telephone Janice on **07884 266 947**.

KEYWAY

NATIONWIDE PLANT RENTAL



Over 50 years experience
Quick response time
Extensive fleet of latest equipment



With more than £7m invested annually and a fleet of 1000, Keyway offers the most comprehensive range of equipment and support services for our customers and operators.



Welcome to the Keyway Group – Extensive range of equipment, personal customer care



Keyway provides a complete recycling and waste management service to the construction and demolition industry operating a fleet of specialist vehicles within the south west region.

We seek to provide value for money and improved environmental solutions for all our customer needs. www.keyway.co.uk



UK CONSTRUCTION RECRUITMENT is a leading employment agency specialising in the supply of temporary construction staff for the built environment. www.ukcr.co.uk

NATIONWIDE STONE SUPPLIES



NATIONWIDE STONE SUPPLIES specialises in providing all of your aggregate solutions no matter the size and scale of your project. www.nationwidestonesupplies.co.uk

For further information please contact us on
T: 0845 241 81 81 | E: plant@keyway.co.uk | www.keyway.co.uk



Sailing4Disabled

meets every Tuesday at
Over Canal Basin from 11.00 to 14.00.
It is open to everyone – whether they have a disability or not.

Pete (Long Gone Silver) Bisson:
07913 015018 peterwb49@hotmail.com
www.sailing4disabled.org.uk

Happy New Year to all readers of The Wharfinger. 2016 has gone, and 16 is the number of regular Pirates who turn up for my **rock cakes**, as well as going on the water with Sailing4Disabled.

For me, 2016 has been a good turning point for our group, with a few learning curves for me. For instance, electrics – there seems to be more to it than just you can't see it, it hurts when you find it, and it costs a lot!

In December we had a visit from Father Christmas at Over Basin to the delights of 17 Cub Scouts, and 12 invited children,

Useless facts:

2016 our small group consumed:

- 10 large jars of coffee
- 176 tea bags
- 750 Sweetex
- 250 gms sugar
- 24 pints of milk (Semi skimmed)
- 854 rock cakes
- 32 boiled cakes (Mrs Robinson's fruit cake)
- 325 hot dinners
- 61 loaves of 50/50 bread
- 3 kg margarine Can't tell the difference? (Yes I can!)
- 20 packets of ham off cuts
- 20 packets of Cheese slices
- ... and we are supposed to be a sailing group?

who enjoyed a splash about in the KataKanus, Wheelyboat and learnt how the canal folk use to pull the barges along the canal. The weather was not very kind to us, to say the least, this may be why they managed to make short work of 72 hot dogs and 64 rock cakes? Father Christmas then gave out small gifts, after a small sing-song of carols accompanied by the *Comb and Paper* musicians. A great day!

2017 has started with our group being invited to display at the NHS Disabled Big Event on 24 May, at Plock Court, Longford, this is followed by the Wheelyboat Trust providing Wheelyboat trips at the TALL SHIPS event in Gloucester Docks over the bank holiday weekend 27 – 29 May. So if you don't see our Wheelyboat and pontoon we're not leaving, we're at the TALL SHIPS EVENT!

Come and support us.

»» PB

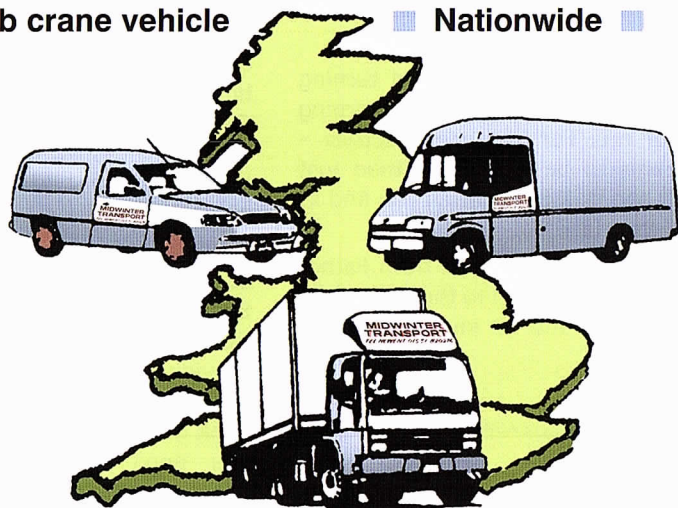


MIDWINTER TRANSPORT

ESTABLISHED 30 YEARS

With a full range of vehicles including

- flat curtain sided and refrigerated ■
- from half tonne Escort to 38 tonne artic ■
- Hiab crane vehicle ■ Nationwide ■



TOTALLY COMMITTED TO DELIVER

Newent 01531 820276

Fax: 01531 822247

Strawberry Hill, Newent, GL18 1LH

www.midwintertransport.co.uk

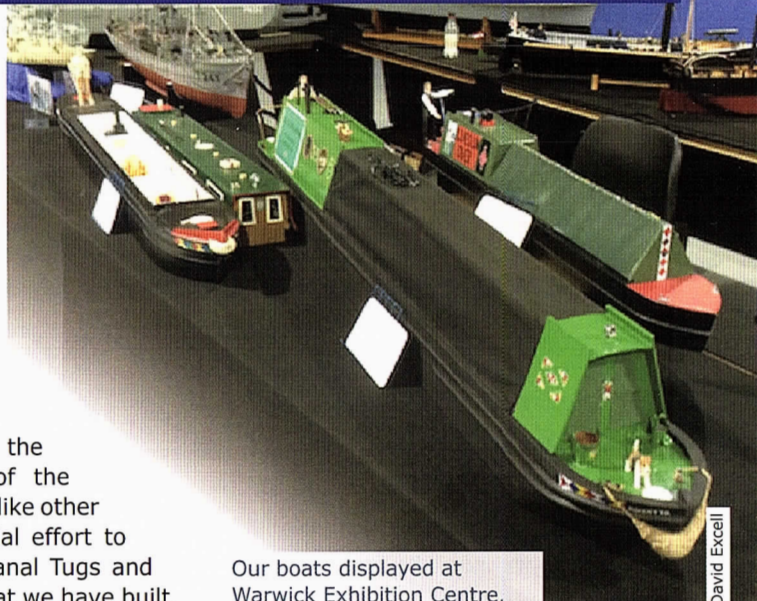
email: midwintertransport@yahoo.co.uk



G&DMC have a stand at the International Model Boat Show at the Warwick Exhibition Centre where we display the range of models that we have made and the activities that we indulge in.

This year's "theme" for the show was 300 years of the inland waterways, so we, like other exhibitors, made a special effort to display Narrow Boats, Canal Tugs and other canal user boats that we have built. These included several Narrow Boats, both commercial and leisure craft, also tugs including "Mayflower" which was used on the Gloucester Ship Canal and possibly the Severn (it is now rebuilt back to its original steam power and is in Bristol Docks) and Charlotte Dundas, the first ever steam canal tug on the Forth & Clyde Canal; also an example of a modern European tug still used for large barge convoys on the Rhine or Danube rivers, and pleasure cruisers that use the canals. Some of our exhibits were also displayed on the boating pool that they have there.

Down at Over we have been holding our usual sailing competitions, finishing the summer Micromagic series and starting the winter one, although the sailors are there all the time the canal is in use by ourselves, we have also had "relay racing" which your scribe missed although he was present for the "Baked Beans" fun day where we maneuvered with various degrees of skill round buoys and into a "Harbour" made by Danny.



Our boats displayed at Warwick Exhibition Centre.

David Excell

Plus eating beans on toast in the portacabin at lunch time.

We continue to weed to keep the canal clear and at the moment we seem to be winning which benefits everybody.

Pleased to see the swan pair back having dumped their children, I now know what "empty nester" means, we should have tried it ourselves.

»» **DE**

Gloucester & District Model Boat Club

sails at Over Basin on Wednesday, Friday and Sunday afternoons (*weather permitting*). You should find somebody sailing between 1pm and 4pm. The Club members will be only too pleased to talk to you about their models and the Club. The members have models of all descriptions including amphibious craft. Yachts are also very popular.

Chairman. Edward Tedaldi.



MOAT CONTRACTING

GROUNDWORK SPECIALISTS



Large enough to deliver. Small enough to care.

07887 544 400

moatcontracting@aol.co.uk

Your help please?

Over Festival



Our preparations are underway for this year's Festival at Over Basin on 19 and 20 August. We are looking for donations of bottles or other small gifts that can be added to our Tombola stall please.

Secondhand books are also welcomed, please, but as there are a few months to go before the event, we would ask if you could let us have these donations closer to the Festival as storage would be a challenge.

Thank you

logs and cordwood

Keep those log burners topped up!

There is always a good supply of logs available from **Malswick House**, an ideal excuse to go visit the pub!!



new pub sign

We once again would like to say thank you to our intrepid team of Henry Clarke and Andy Smith for their work in designing and crafting a new sign for **Malswick House**. It is finished and on its way to Hereford for painting. We would also like to thank **Mettech Ltd**, **Hereford Galvanisers**, **Ledbury Engineering and Welding**, **Adam Soble** of **WERX** and Geoff Baker. All of whom have played a part in the production of this large sign, as well as Janice Lyall for the great artwork she has produced. We look forward to seeing it in place alongside the busy Newent Road very soon.

Thank you

not quite
^... *the last page!*

historic memories

Did you know the tile works near Holmer, in Hereford?

We are looking for members and friends who remember when the tile works at Holmer and the other businesses alongside the old canal? You may have even worked there? If you have any memories or know one who would like to share these with us we would very much welcome your stories.

Thank you

Advertising in *The Wharfinger*

Show the support of your business by advertising in *The Wharfinger*. Rates from £39 per issue and we will gladly design your advertisement free of charge. Contact: The Wharf House
01452 332 900
thewharfhouse@yahoo.co.uk

Page List of Advertisers:

- 17 Beacon Park Boats
- 2 Beta Marine
- 36 Braunston Brokerage/Marina
- 20 Everything Canal Boats
- 21 Geoffrey Urch Garden Services
- 4 Gloucester Quays
- 15 E.B Hayward & Co Ltd.
- 30 Keyway
- 10 Malswick House
- 32 Midwinter Transport
- 34 Moat Contracting
- 18 Print Plus
- 4 RCR (River Canal Rescue)
- 24 The Oak Inn, Staplow
- 10 The Wharf House

**Please support our advertisers –
SUPPORT OUR SUPPORTERS**

Copy deadline for the next issue
MONDAY, 3 APRIL

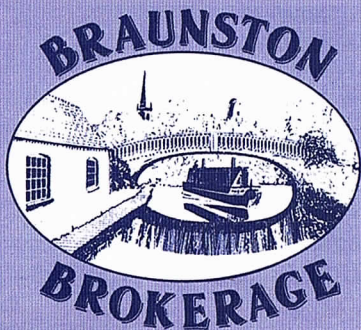
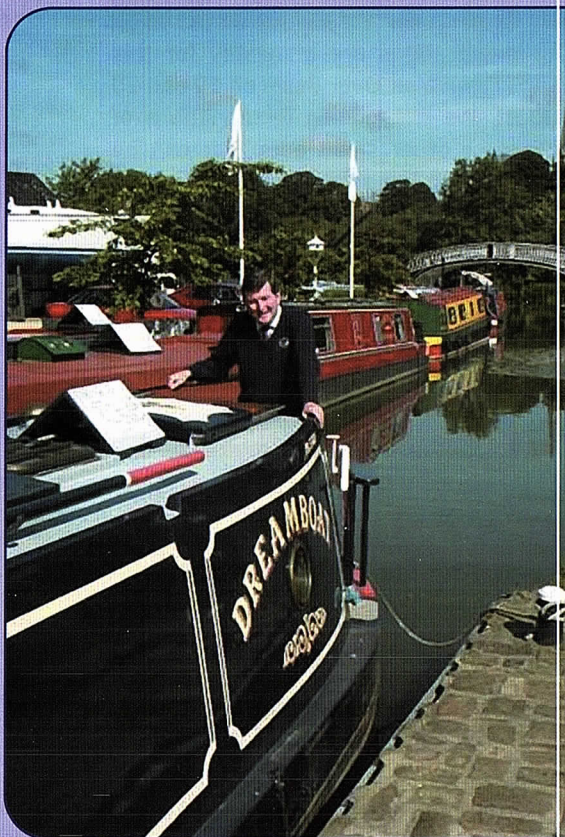
Buying or selling your DREAMBOAT?

*Then make Braunston Brokerage
– at the heart of England's
waterways – your first port of call!*

*Established in 1988, we are
a major player in the selling
of narrowboats – new and
secondhand – with a
reputation for professionalism
that is second to none.*

*Our marina offers the fullest
range of support services.
Uniquely, we have two dry
docks on-site for surveys,
hull-blackening, repaints, sign-
writing and below waterline
repairs. Also engineering and
refit facilities.*

*Sell your Dreamboat
where it will be seen!*



For full information – including our
competitive brokerage package –
contact Tim Coghlan at:

Braunston Marina Limited, Braunston,
Nr Daventry, Northants NN11 7JH
Telephone 01788 891373
Fax 01788 891436

Website: www.braunstonmarina.co.uk
Email: sales@braunstonmarina.co.uk

Want to help?

The Canal Trust is always in need of new volunteers as our activities continue to expand. We can normally find a use for any skill from gardeners to first aiders, brickies

to those willing to help with a shovel, pen or laptop. The H&G CT also welcomes offers of gifts of good quality used tools and machinery from those who no longer need or cannot use it.

Contacts

Contact any of these names TODAY!

Cliff Penny

01432 820 866
canal@penny-ep.co.uk

David Penny

01452 332 900
david@thewharfhouse.co.uk

Wilf Jones

01452 413 888
wilfredjones506@gmail.com

Ted Beagles

01452 522 648
tedbeagles@blueyonder.co.uk

Brian Fox

01432 358 628
briandfox74@gmail.com

Nigel Jefferies

Two Hollylea Close, Bartestree,
Hereford, HR1 4DN
01432 850 661
ncjefferies@talktalk.net

Maggie Jones

01452 618 010
maggiejones@blueyonder.co.uk

John Pritchard

01432 272972
johnpritchard32@btinternet.com

Chris High

01568 615 575
chris@chrishigh.plus.com

Martyn Tilford

01452 790 358
martyn@tilford.free-online.co.uk

H&G Sales and Promotion

Mail Order Sales
Janet Moul
18, Coningsby Court,
Coningsby Street,
Hereford, HR1 2DF
01432 264 366
jmoul@tiscali.co.uk

Legal & Project Development Team

01452 332 900
lpdt@thewharfhouse.co.uk

"Who does what ..."

is inside the front cover.

General enquiries:

information@h-g-canal.org.uk

Visit our websites:

H&G Canal Trust

www.h-g-canal.org.uk

THE **WHARF HOUSE**

www.thewharfhouse.co.uk



'Like Us' on Facebook

www.facebook.com/hgcanaltrust
www.facebook.com/TheWharfHouse
www.facebook.com/malswickhouse

Want to join?

H&G CT UK Membership Rates

Please support our voluntary work by becoming a Member of the H&G CT.
A membership form is available online or from
THE WHARF HOUSE.

	Annual	Life
Individual	£10	£200
Joint/Family	£15	£300
Senior Citizen	£7.50	£115
Joint Senior Citizen	£10	£150
Corporate	£25	£500

PLEASE NOTE: All subscriptions and donations are treated as being made under the Gift Aid scheme unless you state that you do not wish us to do this. Payment made by Standing Order greatly assists us and payment remains under your control. All payments to: H&G CT, 6, Castle Street, Hereford, HR1 2NL

Unless specifically stated opinions expressed are those of the author and do not necessarily reflect the policy of the Herefordshire & Gloucestershire Canal Trust. As a Registered Charity, with defined objectives, we cannot endorse the content of any specific advertisement, product or services. The Trust accepts no liability for any matter, or advertising, contained in this magazine. Reproduction of extracts from the magazine is welcomed provided that full acknowledgement is given.

Membership records are computerised. Your entry is available for inspection if you send a SAE to the Membership Secretary.

We try to ensure details of talks/events are correct – please verify with the relevant organiser if travelling long distances.

© 2017 Published by the Herefordshire & Gloucestershire Canal Trust.

The Wharf House Company Ltd [No. 4627931] is part of the Herefordshire & Gloucestershire Canal Trust Ltd group of companies. The Herefordshire & Gloucestershire Canal Trust is a non-profit distributing company limited by guarantee [No. 2704407] and is a registered charity [No. 1010721].

Registered Office: The Wharf House, Over Canal Basin, Over, Gloucester, GL2 8DB.

Hereford

Our objective is to rebuild the 34 mile Canal linking the centre of Hereford to Gloucester and its connection with the 2,500 mile inland waterway network. We have major restoration sites in each county, together extending to some 4 miles. The intention is to provide a financially sustainable independent Canal which does not require regular financial support from public bodies for its future operation and maintenance.

The H&G Canal Trust

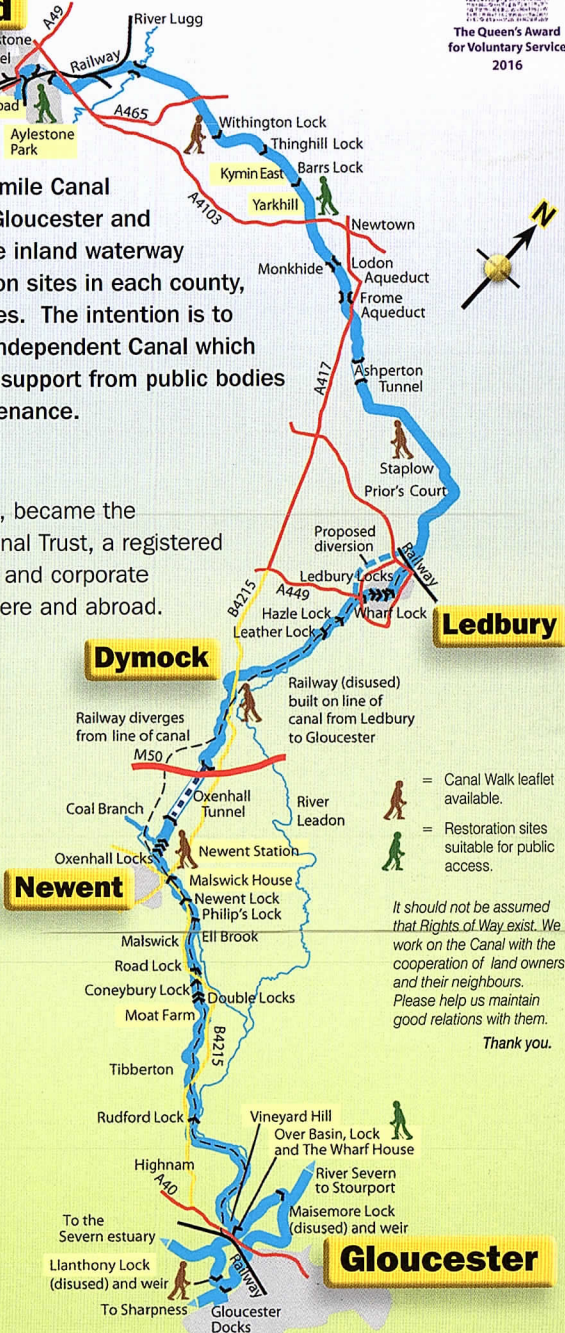
The Canal Society, formed in 1983, became the Herefordshire & Gloucestershire Canal Trust, a registered charity, in 1992. It has an ordinary and corporate membership approaching 1,400, here and abroad.

The original Herefordshire & Gloucestershire Canal

Work started in 1792 reaching Ledbury from Gloucester by 1798. In 1827 Steven Ballard was appointed to oversee the Canal's completion, which reached Hereford in 1845; this was one of the last major canal routes completed in Britain. The Canal stretched from the River Severn at Gloucester, via Newent, Dymock and Ledbury to Hereford, using 22 locks and 3 tunnels. It was closed in 1881 to allow construction of the Ledbury-Gloucester railway which in turn closed in 1964.

Gloucester Quays

Experience More



Map based on original by Martin Ludgate, Canal Boat Magazine.