

£1 free to members

Summer 2017

The Wharfinger

HEREFORDSHIRE & GLOUCESTERSHIRE CANAL TRUST



132
EDITION

REBUILDING A SUSTAINABLE CANAL BETWEEN HEREFORD & GLOUCESTER

Working together in the present to revive the past and secure a better future. ©

Who does what ...

To get in touch see "Contacts" inside the back cover.

Vice Presidents:

R. E. Barnes TD, Richard Graham MP, Mark Harper MP, Duff Hart-Davis, James Hervey-Bathurst CBE DL, Sir John Lushington Bt, Jesse Norman MP, Diana Organ, Tim Parker, Bill Wiggin MP

Council of Management

Committee: Nigel Jefferies, Maggie Jones, Wilf Jones, John Kilpatrick, Cliff Penny, David Penny, John Pritchard

Company Secretary: Dr Caroline Buffery
IWA Branch Liaison: Maggie Jones

H&G Canal Sales & Promotion

Hereford: Janet Moulton, Barbara Moses, Ray Moses, Penny Shetliffe, Pat Skeet, Heather Worth

Gloucester: Margaret Holder, Maggie Jones, Janice Lyall, Pat March

Over Festival Committee: Vicki Brown, Hannah Davis, Margaret Holder, Maggie Jones,

Health & Safety

Wilf Jones, John Pritchard

Membership services

Secretary: Nigel Jefferies
Gift Aid: Janet Moulton

Website Development

Team Leader: Maggie Jones
Web Master: Nick Dymott
Committee: Ted Beagles

Digital Photo Archive: Colin Dymott

Social Events

Organiser: Janet Moulton
Support: Nigel Jefferies, Stephen and Gillian Chowns

Volunteer Newsletter Hannah Davis

Talks and Walks

Co-ordinator: Nigel Jefferies
Dick Skeet, Ted Beagles

HEREFORDSHIRE & GLOUCESTERSHIRE CANAL TRUST

Working together in the present to revive
the past and secure a better future.®

Restoration Sites

Restoration Chairman: Wilf Jones

Hereford Roving Team John Pritchard

Aylestone

Site Leader: Brian Fox

Kymin East

Site Leader: Wilf Jones

Yarkhill

Site Leader: Chris High
Deputy: Paul Hatt

Oxenhall

Site Leaders: Brian Fox,
Deputy: Geoff Hopper

Newent (Sat)

Site Leader: Wilf Jones

Moat Farm

Site Leader: Martyn Tilford

Over and Vineyard Hill

Site Leader: Ted Beagles

Press Liaison

The Wharf House

The Wharfinger

Editor: Cliff Penny
Deputy Editor: Maggie Jones
Design/Production: Maggie Jones
Proof reading: Becca Moulton
Advertising: The Wharf House
Distribution: Janet Moulton, Barbara Moses

THE WHARF HOUSE

OVER • GLOUCESTER • GL2 8DB

Waterside Restaurant, Tea Rooms, Visitor Centre, Superior B&B,
Telephone 01452 33 2 900 www.thewharfhouse.co.uk

All profits from The Wharf House and Malswick House will be used for
the promotion and restoration of the Hereford & Gloucester Canal.

Events: Tessa Berry, Hannah Davis

Mill Barn Project:

Delivery Manager: Janice Lyall
Architects: Roberts Limbrick

Legal & Project Development Team

Commercial & Technical Director: David Penny
Legal: Nigel Johnson
L&P Development Officer: Dr Caroline Buffery
Legal Advice: Roz Rutter, Simon Freeman,
No.5 Chambers

Business Development: David Penny

Planning Consultant: Green Planning Studio

Engineering: Thomas Ashworth, Tony Gee & Partners

Delivery co-ordinator: Wilf Jones

Accounts: Debbie Royston



page
16

Volunteer
Focus



page
26

Over Festival
on the Canal



page
24

Maintenance
matters

Heritage
boats

page
27



page
12

Projects in
progress

Contents

page

- 3** Council of Management report:
Getting our ducks in a row!
- 5** News from L&PDT: So much more
than a Barn!
- 6** News from L&PDT: The Leadon and
Llanthony Hydro Electricity Project
- 9** Fundraising: Anonymous Bequest,
Land Fund, Grand Holiday Draw.
- 11** News from The Wharf House and
Malswick House
- 12** Projects in progress
- 15** Membership update
- 16** Volunteer focus
- 18** Social Evenings at The Royal Oak
- 19** 2017 Annual General Meeting Agenda
- 19** Annual Report
- 23** Membership Form
- 24** Maintenance matters
- 25** Would you like to get involved?
- 25** Thank you Martyn
- 26** Over Festival on the Canal 2017
- 27** Heritage boats
- 28** Nature Watch
- 31** News from the National Waterways
Museum Gloucester
- 32** History File: Arthur Clarke, Grocer
of Newent
- 34** Outings 2017
- 35** Gloucester Model Boat Club at Over
- 37** Sailing4disabled
- 39** Not quite the last page!
- 39** Advertising in The Wharfinger

Some regular readers of **The Wharfinger** will be missing the regular editorial from Cliff Penny, our long-serving editor. Unfortunately, Cliff is unwell and has been advised to take a complete rest and so for this edition Maggie Jones is fulfilling her assistant editor role to ensure our Membership is kept updated with our work. *We all wish Cliff well for a complete recovery.*

Thank you >>> **MJ**

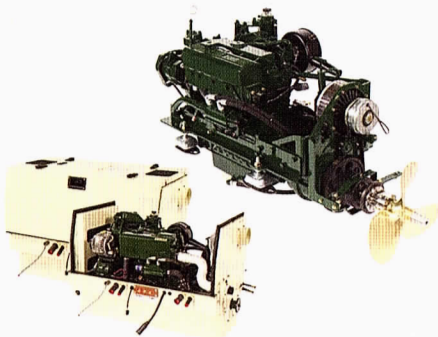
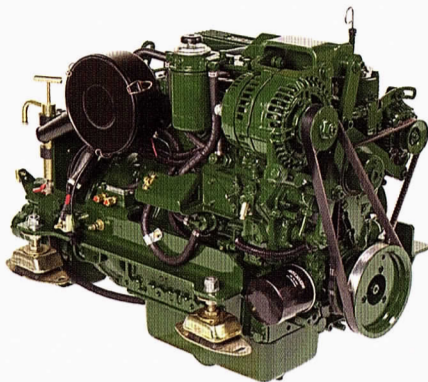
Cover image:
Clearing away the dead
undergrowth below
House Lock. Ralph Ward

Your needs . . .

BETA MARINE

Seagoing Saildrives Inland Waterways Marine Generating Sets Spares & Support

- 30 years of customer centred focus, listening to needs & delivering long term value solutions.
- Specialists in customer advice & support at all points of a products voyage.
- Superb after-sales service via our network of approved engine installers and service centres.
- Extensive range of 14 to 115 HP keel cooled propulsion engines with mechanical or hydraulic gearboxes.



- Super silent acoustic housings, 3.5 or 5.0 kVA travel power, bow thrusters and hybrid propulsion options available.
- Keel cooled Generating Sets <50 kVA with or without super silent acoustic housings.
- 5 year self-service warranty.

. . . our tailored solutions
delivering reliability and peace of mind

BETA MARINE

www.betamarine.co.uk

Tel: +44 (0)1452 723492

Email: sales@betamarine.co.uk



Getting our ducks in a row!

Council of Management have been looking at key objectives that support our strategy for the next stage of restoration.

Income Generation

We are recognised as leaders in sustainable development and management of waterways advising other Canal Trusts on the wider role of sustainability of Heritage Assets. In terms of canal restoration, we need to pick up pace and deliver larger lengths. This requires a change in how we do things and a greater supply of funds from diverse sources. We cannot under-estimate the costs of each project both in terms of acquiring land and resources to deliver new stretches of canal and the long-term liabilities that we take on. Fundraising is crucial for every project we undertake and the ability to generate an income ourselves is essential to enable us to fund our existing work and to become sustainable into the future. This is a primary, enabling objective applicable to everyone in the Trust. All forms of fundraising are important, as is our old rally call '**It all counts**'.



Resources

The next objective is to acquire what we need for each project whether it is land acquisitions, equipment, materials, contracts, consents, legal agreements and other resources, support from the community, volunteers, training for volunteers or professional assistance. Crucially partnerships are a critical aspect of this and you will see much more in this over the coming months.

Delivery

Once the legals are sorted, plans are in

place, funding and resources obtained, we must deliver what we promise. A canal linking Hereford to Gloucester will be a great achievement, but along the way we must ensure that each section of the canal corridor provides economic benefit to H&G CT, protects and enhances the environment and delivers abundant amenity value to the wider community, both now and into the future. H&G CT is not just restoring the Canal, but delivering wider corridors to link into and help support broader objectives for the community.

To achieve our objectives, we need a strong management team with extensive experience in many disciplines, all working towards the same goals together. For instance, new CoM member, Janice Lyall, is using her extensive project management abilities to guide us through what has not been an easy time on the Council. Coming fresh to the CoM she sees the importance of the executive level 'Management Hub' as a crucial deliverable of the Mill Barn project. Aspects have already begun in a virtual form to gather accurate information for instant reference. (see page 5). However, we need further experienced people to join us.

Volunteer Focus, the new regular feature in The Wharfinger, asks regular volunteers "What do you enjoy about working with the team?" Teamwork and camaraderie have been the response. As we move forward the teams will change, merge, and reform, however the teamwork and camaraderie should increase as we excel in meeting those three objectives.

Answers to the question, "What is your proudest volunteer moment?" reflect on celebrations of the work that our volunteers have achieved; for instance **The Queen's Award for Voluntary Service** and the opening

UP TO 70% OFF OUTLET SHOPPING

Quality restaurants, bars
and a 10 screen cinema

Carluccio's

☆cineworld

Zizzi
Restaurants

M&S
OUTLET

FRIDAYS

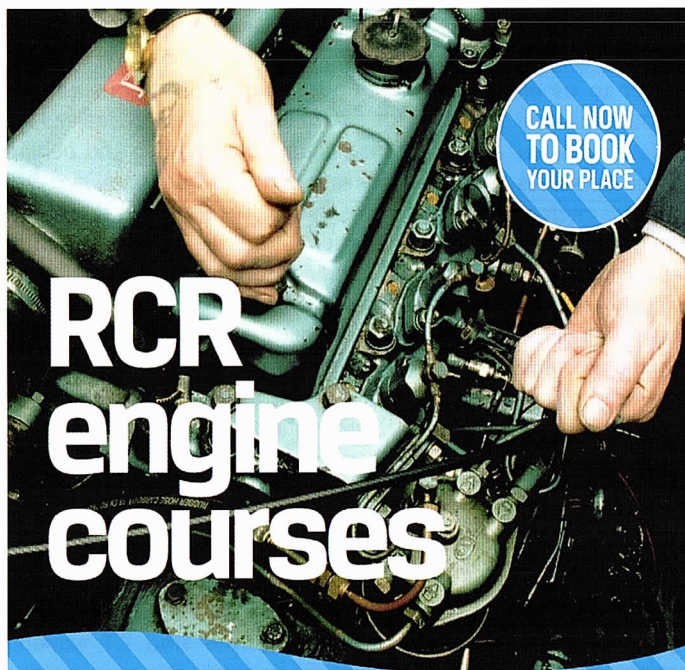
JAEGER



Gloucester Quays

Experience More

gloucesterquays.co.uk



CALL NOW
TO BOOK
YOUR PLACE

RCR is about more than providing a breakdown service, we strongly believe in education and development of skills for boaters. Our courses are designed for current and potential boat owners who would like to learn about basic boat engine maintenance and the electrical systems on their vessels. It's ideal for all backgrounds and those wishing to develop their knowledge and skills further.

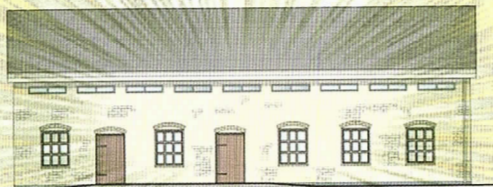
FOR MORE INFORMATION CALL

01785 785680

So much more than a Barn!

by Janice Lyall

Welcome to my first *Wharfinger* update for the Mill Barn Project. I feel very privileged to be the project manager and my enthusiasm continues to grow daily, as I meet more members.



Mill Barn project is far more than a building construction project. It represents a major gear change in the development of the Herefordshire & Gloucestershire Canal Trust.

Since its early beginnings, H&GCT has achieved great things, oftentimes with no resources, other than the sheer grit and determination of its unsung heroes, the volunteer teams. Not unsurprisingly, this has put numerous strains on many aspects of the Trust, not to mention the strains on knees and backs! As the Trust's restoration needs become greater, the business challenges become tougher and new and improved ways of managing become a necessity. You, like me, may have read with interest some of the organisational and business changes being debated to prepare H&GCT for the future.

As well as providing the much needed facilities (described in previous editions) for volunteers and other users of Over Basin in terms of a workshop, toilets,

kitchen and storage, the Mill Barn project will deliver the new executive team, known as 'The Management Hub'. This team will operate from the upper floor of Mill Barn using systems designed to enable remote working.

“Mill Barn Project is far more than a building construction project.”

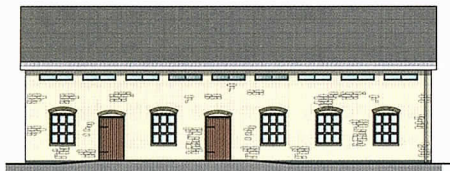
The project will also deliver the much needed 'Management Information System' and related processes. These are key

to enabling informed decision making and to set appropriate strategies along the geographical length of the canal corridor and across the breadth of its business interests. Mill Barn project will touch on every aspect of the Trust's work in some way.

Currently, I am trying to reach out to all members and especially volunteers, to hear thoughts on how H&GCT can improve its work. I am also looking for individuals who would like to join the Mill Barn project team. In particular, I am seeking people to help raise funds, help acquire goods and services and anyone who just wants to 'muck in', as part of an enthusiastic team.

»» JL

Mill Barn



We are really delighted that Janice Lyall has taken on the challenge to oversee all aspects of delivery of this crucial project for the Canal Trust. Many will know Janice as our 'artist in residence' providing the fabulous artworks that adorn both **Malswick House** and **The Wharf House**.

Few will appreciate that Janice's career has actually been based in Risk and Project Management at senior level through a portfolio of major industries from the Coal Board to the Nuclear Industry. It is this highly appropriate skill base that Janice is now set to use to our advantage to ensure that Mill Barn is delivered, and just importantly all the funding for it is secured. You will be seeing a lot more about this in coming issues of **The Wharfinger** from Janice as she develops a team to take this critical project for the Canal Trust forward and build the partnerships with stakeholders that are critical to deliver this and indeed many other projects in the future.

»» **DRP**

Planning partnerships

There are several projects in the pipeline that keep us busy here from the major developments at Ledbury and Holmer to long term schemes in discussion with partners. Rarely are these simple or straightforward to deliver but persistence does pay off with schemes such as Over and Dymock delivering the firm foundations for the Canal Trust to move forward.

»» **DRP**

Dymock an example of a winning partnership



Two Rivers Housing Association

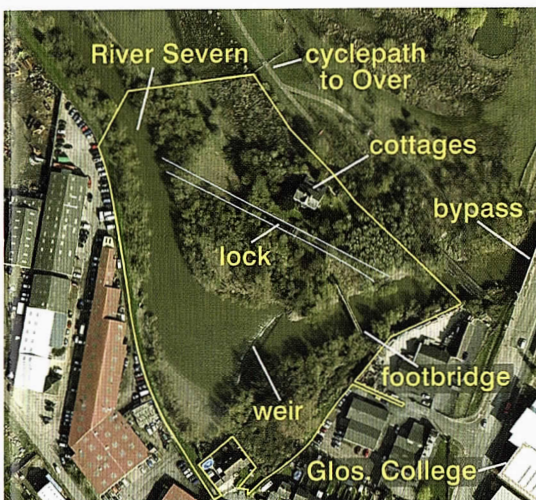
David Thomas (GP Thomas), David Penny (H&G CT), Garry King (Two Rivers Housing), Dorothy Brooks, Terry Ball (Parish Council).

Leadon Hydro



This is an exciting Project here at Over to secure our long term water supply for the canal and generate all the electricity required for both **The Wharf House** and **Mill Barn**. Our first round consultancy reports will be on the desk in the next month and we very much look forward to this being a project that follows on the ground after the completion of the Mill Barn shell and whilst it is being fitted out. The Leadon scheme forms the basis of various partnerships that we carry forward into the much larger Llanthony Hydro and Flood Relief scheme which we continue to work on in the background.

»» **CB**



Aerial view of Llanthony Lock showing the area H&G CT own.

alternative turbine designs, and meeting with various hydro suppliers. There are a number of new and exciting turbines on the market, and H&GCT needs to be sure that the best and most efficient design is installed. Depending on the red tape process, the team hope to have made a decision on the design and move to the next stage by the summer.

Llanthony

Alongside the commencement of Leaddon Hydro, the planning of a much larger scheme at Llanthony continues.

The £10m hydroelectricity scheme at Llanthony has been in development stage for a number of years. The H&GCT has now started work in earnest on this project, which hopes to install a system to provide green electricity to Gloucester Quays and potentially others.

The H&GCT already own the old Lock and cottages alongside Llanthony weir. The lock was built in 1871, and was needed to allow boats passing up and down the River Sever to avoid the weir, which had been constructed to ensure

that there would always be a minimum depth of six feet of water in the river above Gloucester. The lock remained in use until 1924. With the implementation of the hydro electric scheme, the Trust will construct a complete new lock and flood relief channel reconnecting our Canal to the network.

The hydro energy resource will require the installation of inflatable weirs on top of both Llanthony and Maisemore weirs to raise the impounded level by over two metres. This will minimise tidal intrusion and silt load, dramatically reducing silting of both Gloucester docks and the River channel. With the reopened lock acting as a flood relief channel, the development site will contribute to the delivery of the Environment Agency plans outlined in the Briefing Note '*Reducing flood risk from the River Sever in Gloucester and the surrounding area - Initial Assessment*' (March 2016). The improved navigation in the Parting and into Gloucester Docks will maximise the Dock tourism income for the City.

The first Feasibility Study confirmed the practicality of the proposal and the economic viability in principal and with the continued support of Gloucester City Council, the scheme is expected to receive considerable capital contributions from developments in the Gloucester area. This project will be a showcase for the development of green energy on the Severn.

» CB



Llanthony Lock today.

fundraising

As a small charity with big ambitions we always have to find the means to carry out the Canal restoration and associated activities. Here are some of the latest ways we are raising funds and ways in which you may be able to help too?

anonymous bequest

H&GCT have recently received an anonymous bequest for £20,000 towards the **LAND FUND** from a supporter of our Restoration.

This is a great boost to the **LAND FUND** and very much welcomed.

Thank you!



H&G CT

LAND FUND

more land = more restoration

The **LAND FUND** will provide the means to obtain the crucial sites along the line of the Canal where there is no new development proposed or where we cannot acquire the line of the Canal by other opportunities. It is a vital fund to help us eventually restore the full length from Gloucester to Hereford.

visit www.h-g-canal.org.uk
then click 'About the Trust'
then click 'Land Fund'

postage

STAMPS

Thanks to all who sent in stamps during 2016, your generosity is much appreciated and, as a result, we are now very likely to reach our next milestone of £2,500 raised for the Land Fund, during early 2017.

In the autumn we received a large collection of Channel Islands and Isle of Man stamps, this will be going to auction in early February and we hope that it may achieve a three-figure sum to significantly further boost the fund – so fingers crossed!

Remember, stamps, albums, old postcards, in fact anything vaguely philatelic, can be turned into cash for the Trust, so please keep them coming.

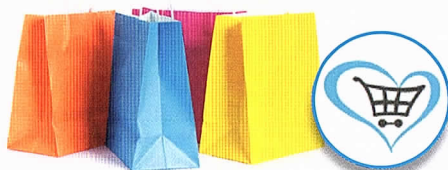
Here's to a productive 2017 for all in the H&G!

Stamps can be taken to a Social Evening or other H&G CT event – or to **The Wharf House** or **Malswick House**. Or send them direct to: – **H&G Stamps**, c/o Steve Bence, 35 Lime Road, Southam, Warwickshire, CV47 1EQ.

Please keep those stamps coming.

Thank you » SB

do you shop on line?



Please register with **Give as you Live?**
Just type into your browser

<http://goo.gl/12c9xl>) (it's a shortcut to
www.giveasyoulive.com/join/handgcanaltrust)

Then the H&G CT will receive, at no cost to you, a percentage of the purchase value from any of the many retailers who have signed up to the scheme to support charities such as the H&G CT.

fundraising

As a small charity with big ambitions we always have to find the means to carry out the Canal restoration and associated activities. Here are some of the latest ways our supporters have helped and some ways in which you may be able to help too?

Collection for the LAND FUND



Many thanks to the family of Mrs Elizabeth Myers who kindly made the collection at her funeral in aid of the Canal Trust which contributed some £450 to the Land Fund. Our condolences to her family. The growth of the land fund and generous acts such as this are absolutely crucial to us being able to move forward.

Many thanks >>> **DRP**

more land = more restoration

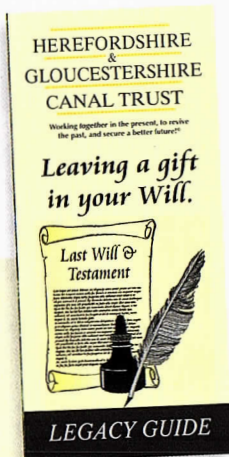
For more information visit : www.h-g-canal.org.uk then click 'About the Trust' then click 'Land Fund'.

Grand Holiday Draw 2017

Money and ticket stubs are starting to come in for this year's Grand Holiday Draw. Anyone who can sell further tickets to family and friends please contact Janet Moulton on 01432 264 366. She will be happy to send you more. They are great prizes and we thank **Black Prince Holidays, ABC Leisure** and **The Wharf House** for donating them. The prize winners will be drawn at the Social Evening at The Royal Oak, Much Marcle, on 19 September 2017. There is no obligation to return unsold tickets.

Remember – every pound raised is a pound towards restoration of the Canal! Thank you.

Please Note: All completed ticket stubs and money from their sale should be returned to the promoter, **Janet Moulton**. See inside back cover or tickets for details.

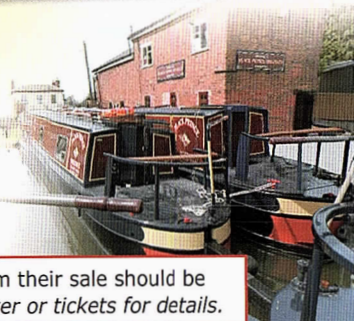


Anonymous Bequest

We are extremely grateful for the significant but anonymous, bequests from a long term supporter and their family. The first cheque for £20,000 was greatly appreciated but we were even more surprised

when in response to Janet Moulton's thank you letter, a further £30,000 came by return. Bequests such as this are crucial to the H&GCT moving forward. Once again, our sincere thanks to the family for their generosity and to all those members who think of us in their wills so that we may make lasting progress for future generations.

Thank you! >>> **DRP**

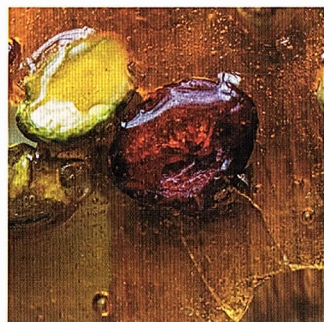




THE WHARF HOUSE

AWARD-WINNING WATERSIDE RESTAURANT WITH ROOMS

MODERN BRITISH AND EUROPEAN CUISINE WITH A TWIST



Tasting and à la carte menus / Afternoon Tea £16.50 pp
Lighter lunches including paninis from £4.50.

01452 332 900

www.thewharfhouse.co.uk

Over, Gloucester, GL2 8DB
enquiries@thewharfhouse.co.uk

Directions: Turn off the A40 at traffic lights 250 yds west of
Over Roundabout (junction A40/A417). GR SO 816197

MALSWICK HOUSE

TRADITIONAL INN • FOOD • FUNCTIONS

A Traditional Country Inn situated on the edge of
Newent in the historic Forest of Dean, Gloucestershire.



01531 822 634

www.malswickhouse.co.uk
B4215, Newent, GL18 1HE
enquiries@malswickhouse.co.uk

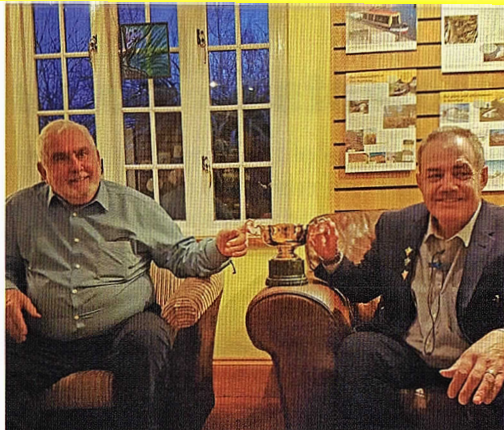
All profits from The Wharf House and Malswick House will be used for the promotion and restoration of the Hereford & Gloucester Canal.

news from

THE WHARF HOUSE

Spring is in the air and both businesses have been flourishing going into the second quarter of the year.

The Wharf House struck gold of a different kind during March with a busy Cheltenham Race Week for the team. They were hosts to the Potts family, Ann and Alan, owning both the Coral Cup winning horse and the Gold Cup winning horse, Sizing John. The family were more than happy to bring their trophies down to dinner and even breakfast for our guests to dine alongside that week's most sought after prize.



Gold Cup owners Alan and John Potts proudly show their trophy whilst staying at The Wharf House.



David Penny

Both the Gold Cup and the Coral Cup spent the night at The Wharf House.

... and news from

MALSWICK HOUSE

Malswick House has been having busy Sunday trade with the continuing popularity of Traditional Sunday lunches.



Hannah Davis

Served between 12 noon and 4pm, they will also be doing their full menu on Sundays too.

The Marquee is in the process of having a spring clean ready for a busy summer and the beer garden is following suit.

»» **Hannah Davis**

Art Club

Janice Lyall runs an Art Club each Wednesday morning at **Malswick House**.

These are held in the conservatory from 10am to 12. An ideal venue as it has plenty of light and of course refreshments for those needing sustenance. The classes are open to everyone so for more details telephone Janice on **07884 266 947**.

projects *in progress*

Here are some of the projects that our Volunteers are currently undertaking at Over Basin and Newent Station:

'The Great Wall'

Progress on the great wall below **The Wharf House** has slowed a little recently, awaiting the infill behind the wall; this is needed to provide lateral support behind the side walls of the cycle cave in order to support the brick arch roof. In the meantime casting of reinforced concrete 'L' beams to transfer the roof loading to the side walls, is underway. After the roof is completed we shall lay the capping bricks to the wall to finish the job.



Bob and Ivor erect the L-shape shuttering.

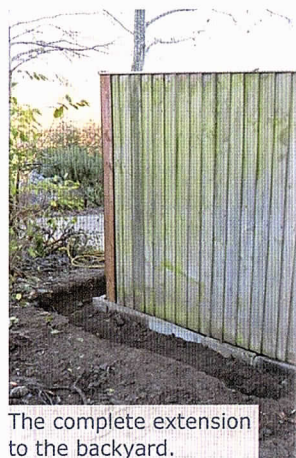
Newent Station platforms

Work has continued at Newent Station. Volunteers have been removing spoil and infill to expose the platform walls to assess the what is required to repair / restore them.

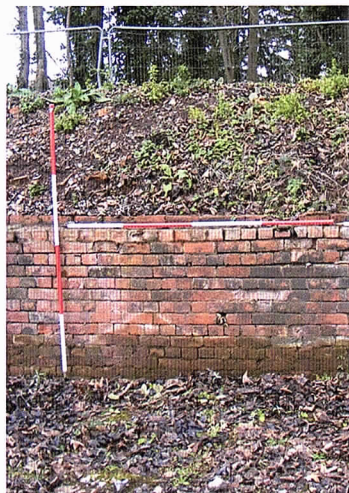
Each platform is approximately 100 metres long, and to fulfil the Trust's vision of the Canal running between the platforms we have to ensure the walls are sound and ready to be increased in height and waterproofed. Engineers are currently working on the design and specification to enable a satisfactory solution to the challenge.

»»» *Wilf Jones*

The pictures below show the exposed wall with ranging poles to assist with any work being completed by historians or archaeologists.



The complete extension to the backyard.



A chimney pot salvaged from the old hospital has been a feature of the garden for several years. In removing it to make way for the patio the top section broke away due to frost damage. It has been carefully mended by Dave Hurran and is waiting to be returned to the garden.

»» Ted Beagles



A week later, the patio is complete and the garden dug over.

Brian Fox writes:

Repair to the railway abutments.

Our latest project at Newent is still in preparation for restoration of the canal but will give us something to get our teeth into and utilise the skills developed over the past years in brick and stone work on the lock and aqueduct.

I refer to the remains of the railway bridge over the Dymock road which has not seen a train or any maintenance for over 50 years and is showing signs of wear and tear. Readers will recall the report in Edition 128 of a tree growing on the old track bed on top of the bridge and the roots had undermined one of the corner buttresses causing it to lean at an alarming angle towards the road below. The Council have now dismantled the buttress but the tree is still there and causing no

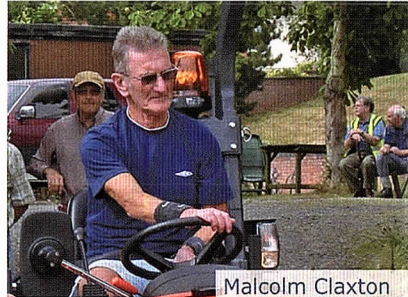
immediate danger so it will be removed later. But inspection of the remaining buttresses revealed the same problem with tree roots but this time a tree on the other side of the road has developed roots which undermine the coping stones topping the wing wall. It is no danger to



Scaffolding is erected in preparation for the repairs.

volunteer focus ...

Over Basin is our largest group of volunteers with a regular weekly attendance of around fifteen in the dedicated team led by Ted Beagles. Malcolm Claxton is one of the gang who plays a crucial role in regular mowing and ensuring that the site is kept tidy for our visitors to enjoy. Maggie Jones asked him to speak about his role.



Malcolm Claxton

Malcolm, how long have you been volunteering with the H&G CT?

My first day was 23 June 2007, so coming up for ten years.

What attracts you to the waterways?

The peace and tranquillity plus the abundance of wildlife and flora are second to none. The canals were a major force in the industrial revolution, which makes them an integral part of our history. Engineers like Telford and Brunel and, in the case of the H&G, Ballard, were way ahead of their time. The aqueducts, bridges and locks, which they designed, all built using manual labour, were simply stunning. It is also very interesting to read about the manner in which the different companies used their boats to move goods around the waterways.

What drew you to volunteering with the H&G CT?

Before moving to Cheltenham, I had limited involvement with the restoration of the Wendover Arm of the Grand Union Canal at Tring in Hertfordshire. I knew nothing about the H&G Canal and it was only as a result of visiting the tourist information centre in Cheltenham that I learned of its existence. Having volunteered with the Wendover Arm Trust project it seemed a natural progression to become involved with the H&G. The rest is history.

What do you enjoy about working with the team at Over?

Team is the appropriate word. We are a team and as such work well together, even when not involved on the same project. Everyone gets on well which makes for a great atmosphere.

Tell us about some of the main duties you carry out as a volunteer?

Members of the public regularly visit the site, so keeping it looking as clean and tidy as possible is important. Much of the work involves scrub clearance and hedge cutting, normally with loppers and secateurs. The more dense scrub and bramble is taken care of using the flail attachment on the Kubota. From time to time the canal banks need a trim and here again the flail on the Kubota is the answer. By far the most time consuming task is grass cutting, which during the growing season is a weekly event. Our old but trustworthy Roper sit on mower takes care of this task.

As one of the main drivers of the Kubota tractor what do you feel is its main benefits?

The bucket on the front is probably the most beneficial of its capabilities, giving us the ability to lift and move heavy loads or items around the site. The days of manually moving barrow loads of bricks, road scalping or other material across site are a thing of the past. The flail attachment although not really suitable for cutting grass, is a great benefit when removing dense scrub and bramble or tidying the banks of the canal.



Malcolm steers the Kubota along the towpath.

membership update...

Dear Members,

I am tasked with maintaining the membership database and I endeavour to ensure the details are accurate. I also use the database to print off the labels for the distribution of *The Wharfinger*, to complete a membership audit at the end of February, and to print off polite membership renewal reminder letters to members who elect to pay by cash or cheque, but have overlooked to do so.

If your membership details need amending; you change address, your membership status changes, perhaps because of retirement, you change your email provider, your telephone number changes or you decide to pay your membership subscription by standing order instead of by cash or cheque, please be sure to advise me; my contact details are on the inside of the rear cover of the magazine.

Thank you kindly, Nigel Jefferies, Membership Secretary.



stationery • leaflets • mailers • posters • folders • programmes • newsletters • brochures • prospectuses • calendars • magazines • books • exhibition panels

PRINT PLUS

01432 272025



126 Widemarsh Street • Hereford HR4 9HN
Fax: 01432 353962 • Email: enquiries@printplushereford.co.uk
www.printplushereford.co.uk

always delivering quality



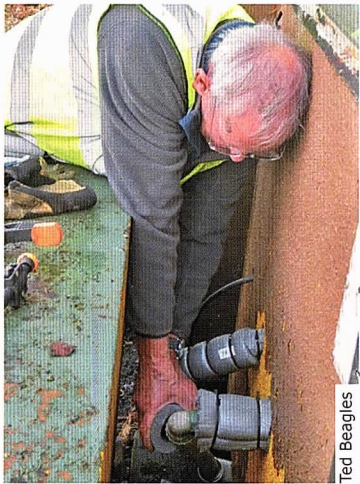
maintenance *matters...*

The H&G CT is keen to keep up with the regular maintenance on every site along the Canal. Here are some of the recent tasks undertaken by our Volunteers:

Kymin

A small team worked off some of the Xmas excesses with a day out at **Kymin**, trimmin' and strimmin'.

As one of the agreed 'maintenance days' we were able to tidy the length of the towpath. The team also removed the logs from the fallen tree branch which a small group had retrieved earlier and cut up. The branch had laid across the canal into the wildside (off side) bank. >>> *Wilf Jones*



Ted Beagles

Yarkhill

Typical winter work for the **Yarkhill Team** – vegetation clearance at the lock end of the canal prior to the winter water encroaching. This was then followed by a burn up of the accumulated rubbish. >>> *Chris High*



The lock end after maintenance.



The Yarkhill team light a bonfire to burn the debris after clearing the vegetation.

Chris High

What was your work before retiring from paid employment?

I was Secretary at a Special School for Children with Learning Difficulties for many years – a job I found very rewarding. My experience put me in good stead for when Tom, a young adult helped out at Yarkhill.

What would you say to someone considering volunteering with us?

Ladies, as you will see canal restoration is not a male domain. With your wealth of skills you too can volunteer – from assisting in events, gardening and painting to possibly even tractor driving. All you need, in my opinion, is lots of enthusiasm and a good sense of humour!

What is your proudest volunteer moment?

Attending the ceremony at Over last year when the Trust was presented with the Queen's Award for Voluntary Service – the



Penny tends the garden next to Lock Cottage.

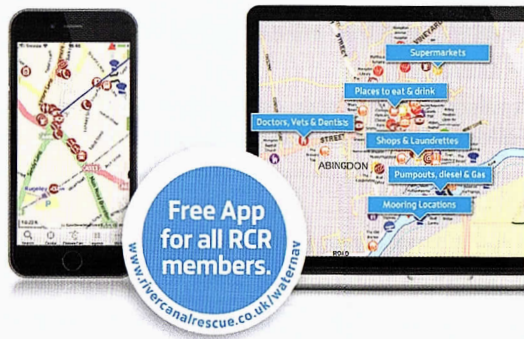
highest award given to local volunteer groups across the UK to recognise outstanding work in their communities. The enthusiasm and pride of all the volunteers there was palpable and the day one to be long remembered. >>> **PW**

WaterNav. The waterway's SatNav.



RCR's WaterNav is available as a PC-based software or App for your phone. It offers a combined information system, route planner and SatNav for all the inland waterways in the UK. It is an essential cruising companion and equally useful for walkers and cyclists. Use WaterNav software on your desktop, laptop or netbook and the Apps on your iPhone or Smart-phone. There are eight separate cruising areas based on the cruising rings, simply download the one you want to cruise and start to experience the benefits of having key information at your fingertips. You can also download the Apps for for **FREE** when you purchase the PC version of WaterNav.

Thousands of points of interest.



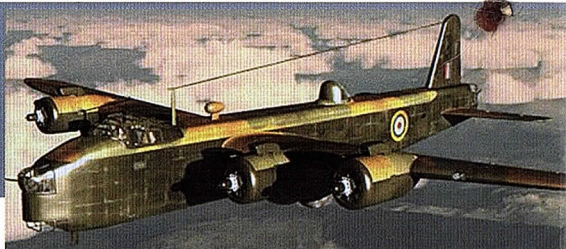
The RAF gardener:

the story of a wartime escape.

– Maggie Jones

Those attending the Social Evening at the Royal Oak were treated to something completely different in January: a gripping wartime story of intrigue, espionage and escape!

The story was told by Gillian and Stephen Chowns, two of our own members who usually greet you at the door. This time they took centre stage and told the story of Gillian's father, who, during the war, was a navigator on a Stirling bomber. He was shot down near Lyon in August 1943 and hidden by the Maquis for four months and eventually escaped over the Pyrenees and returned to England in January 1944. Once or twice during his odyssey he was disguised as a gardener, and is described as 'the RAF gardener' in a book about the Maquis in that part of France.



Gillian and Stephen retraced his journey and met members of the families who had helped him, when they visited France and Spain in April 2014.

Whilst Stephen narrated the story he paused for Gillian to read from her father's diaries of the amazing escape. They both had the audience on the edge of their seats. A great presentation!

Thank you. >>> MJ

Do you have a story to tell or know of someone with an interesting hobby or canal related topic they would share with us? Janet would love to hear from you. Her contact details are inside back cover.

stationery • leaflets • mailers • posters • folders • programmes • newsletters • brochures • prospectuses • calendars • magazines • books • exhibition panels

PRINT PLUS

01432 272025



126 Widemarsh Street • Hereford HR4 9HN
Fax: 01432 353962 • Email: enquiries@printplushereford.co.uk

www.printplushereford.co.uk

always delivering quality





THE HEREFORDSHIRE & GLOUCESTERSHIRE CANAL TRUST

2017 ANNUAL GENERAL MEETING

will be held on **Tuesday 18 July 2017 at 7.30pm**

at **Malswick House, Newent GL18 1HE** (*Members and friends are welcome.*)

A G E N D A

Copies of the Statement of Financial Activities and the Balance Sheet 2016-17 will be available at the AGM. A pdf of the complete accounts can be emailed to you on request to accounts@h-g-canal.org.uk.

1. Welcome
2. Apologies for absence
3. Approval of previous AGM minutes, copies of which will be available at the meeting
4. Chairman's remarks
5. To receive and approve the report of the Trustees and unaudited financial statements for the year ending 28 February 2017.

6. To approve the independent examiner of H&G CT accounts
7. Council members standing down: John Hammond, Janet Moul, Carolyn Pascall
8. To elect nominations of potential new council members
9. Close of formal business, and short break
10. Presentations and open discussion forum

Prior notice of questions to CoM via website: **H-G-Canal.org.uk** / *Contact Us* should ensure a comprehensive response and would be greatly appreciated.

Items 7 and 8: The H&G Canal Trust Memorandum and Articles of Association allows up to 18 Trustees to be appointed. One third of the Trustees are required to stand down annually in rotation, but can apply for re-election. Potential new Trustees are elected at the AGM or co-opted onto the Council of Management for a minimum of six months before they become a Trustee. Nomination forms, obtainable from the Company Secretary, are required to be completed and returned up to seven days before the AGM.

New Trustees are given an induction to the work of the Trust and information they need to fulfil their roles, which includes information about the role of Trustees and charity law and their liabilities.

A member may appoint a proxy to vote who must be someone entitled to vote. Proxy forms are available from the Company Secretary via contact us on our website h-g-canal.org.uk. and must be returned to her at least 48 hours prior to the start of the AGM.

Annual Report for the year ending 28 February 2017

This is the twenty-fifth Annual Report of **Herefordshire & Gloucestershire Canal Trust Limited**, a non-profit distributing company no. 2704407, formed in April 1992, and a registered charity no. 1010721.

It replaced the Herefordshire and Gloucestershire Canal Society launched in 1983. This is also the report of The Wharf House Company Limited no. 4627931, the wholly-owned subsidiary, all profits from which are used for the promotion and restoration of the Canal. Registered office

for both companies: The Wharf House, Horseshoe Drive, Over, Gloucester GL2 8DB.

The Council of Management, acting as Trustees of the charity, is aware of the general guidance issued by the Charity Commission on public benefit. The Trustees have regard to this guidance and consider the activities of the charity have been carried out demonstrably for the public benefit and this applies also to their plans for future action. The charitable objects are defined as rebuilding a sustainable canal between Hereford & Gloucester.

Council of Management of H&G Canal Trust:
year to 28 February 2017

John Hammond (Vice-Chairman, Treasurer until 28 February 2017), Nigel Jefferies, Maggie Jones, Wilfred Jones, *John Kilpatrick (from 19 July 2016)*, *Janice Lyall (from 31 March 2017)*, Janet Moulton (until 31 October 2016), Carolyn Pascall (Company Secretary until 31 December 2016), Cliff Penny, David Penny (Commercial & Technical Director), John Pritchard.

Board of The Wharf House Company Limited:
year to 29 February 2017

John Hammond (until 29 December 2016), *Janet Moulton* (until 31 October 2016), Carolyn Pascall (until 29 December 2016), David Penny (Commercial Director).

Those in italics are not a director of the relevant body.

The Council of Management has continued to monitor how H&G CT operates to ensure it is structured in the best way and has the appropriate controls and processes to fulfil its objectives for the benefit of the whole community. H&G CT's Legal & Project Development Team continues to work on land acquisition, as well as focusing on acquiring grant aid and other funding, and on building partnerships with external bodies which can both support restoration and provide an income for the future as stated in the charitable objects. This is in line with our long-stated objective of ensuring we establish income streams wherever possible, to maintain restored sections of the Canal and, in the long-term, the H&G Canal as a whole.

Council of Management said farewell to our long standing Chairman, Janet Moulton, who resigned from the council in October. Janet continues to support the Trust in many ways including the Sales Teams and The Wharfing distribution. In December we also said farewell to John Hammond and Carolyn Pascall, who had supported us in a number of ways. Thank you to all three members.

The Council of Management have been working on a new management structure. It started with a series of workshops led by Clive Weston. We have welcomed Janice Lyall to CoM who is leading us to produce a Management Hub that will give us the necessary management structure to carry us forward to the next stage of canal restoration. We have also had a number of offers of help and support from other Trust Members.

Thank you to all concerned. As the Trust's restoration needs become greater, the business challenges become tougher and new and improved ways of managing become a necessity. Some of the organisational and business changes are being debated to prepare H&G CT for the future. (68 volunteer days, £4,050.)

Major new projects in the year under review:

At **Ledbury**, Bloor Homes plans to build 625 homes, and most importantly, will include a half mile of the Canal along the western side.

Holmer Site in Hereford sprung to life again with new owners Codex and discussions are ongoing.

Leadon Hydro: Thanks to a grant from WRAP the first phase of an ambitious plan to build a hydropower facility where the Leadon joins the Severn commenced. Once installed, the hydro system will provide enough power to enable both The Wharf House and the proposed new Mill Barn to be run entirely off grid.

Reasons to celebrate!

At **Dymock** H&G Canal Trust won an International Green Apple Award 2016 for the Built Environment and Architectural Heritage. The Award was given for the Dymock Partnership Project.

The newly refurbished **Malswick House** celebrated its first anniversary with a Hog Roast in July.

Herefordshire & Gloucestershire Canal Trust Volunteers were honoured with the **Queen's Award for Voluntary Service for 2016**.

The second cottage at **Llanthony** became available for refurbishment and this was undertaken by the handyman, who is retained by The Wharf House. Both properties are now successfully let and generating a 13% return on investment.

The Wharf House, run by The Wharf House Co Ltd the wholly-owned subsidiary of H&G CT, continued to trade successfully and achieved an AA Rosette for the seventh year running. New more energy-efficient equipment was installed. The Wharf House continues to fund all H&G CT planning, legal and project development costs, and provides accommodation and office facilities for H&G CT's Legal & Project Development Team. The L&PDT continued negotiations with numerous bodies including Herefordshire, Gloucestershire and Forest of Dean Councils, Dymock Parish

Council, other agencies and landowners. Terms for the Holmer development in Hereford were also agreed, and Mill Barn plans advanced. (270 volunteer days, £70,500.)

Charitable activities and achievements:

Aylestone Park – The Hereford Roving Team started life by attempting to remove the weed from the canal at Aylestone Park as well as tackling both banks. The Spill Weir is still waiting to have railings fitted. (25 volunteer days, £1,250)

Burcott Road – the undergrowth along the fence-line adjacent to Burcott Road tidied. (3 volunteer days, £195)

Kymin – The towpath has been maintained with some trimming and strimming. (12 volunteer days, £780)

Yarkhill – Maintained by both hand and tractor. (168 volunteer days, £6,825)

Dymock – Dymock Pool is filling up with water, giving a good picture of what the area will look like when the banks have greened up and the hundreds of trees we have planted burst into leaf and blossom. The towpath around the basin has been raked and grass seed sown. Volunteers continued to clear the weeds springing up between the trees and shrubs planted around the basin. The boundary fence to the neighbouring chapel has been erected by volunteers from Oxenhall, who also cleared a pathway for the chapel volunteers to get their mower to the newly fenced land. A planned borehole has been installed to keep the basin topped up. (15 volunteer days, £1,000)

Oxenhall – Much work has been done on the Willows section to keep it clear of brambles. Continual maintenance towards the lock has been kept up and the small garden below the cottage kept tidy. The wooden footbridge over the lock was found to be rotting away so remedial work was carried out to repair it. Another successful Open Day was held in September. (168 volunteer days, £10,000)

Newent – Work is carried out by both the Oxenhall team and an occasional weekend team. Old stock left by the previous tenants has been sorted and will be sold on to provide income for the Trust. Clearance of the old station platforms is continuing. Each platform is approximately 100 metres long, and to fulfil the Trust's vision of the Canal running between the platforms we have to ensure the walls are sound and ready to be increased in height and waterproofed. Engineers are currently working

on the design and specification to enable a satisfactory solution to the challenge. An area in the wooded area have been sprayed twice this year where small patches of the dreaded Japanese Knotweed were discovered. A permissive path for walkers has been maintained. (371 volunteer days, £12,100)

Malswick House – In the Spring a work-in began a series of projects at the Pub. The iron entrance railings were given a fresh coat of paint, the earth bund by the roadside was reshaped and seeded. At the back of the property next to the original line of the canal a large extension to the beer garden was created. Fences bounding the car park and the new garden extension were erected. Outside tables, seats, fencing and pergola were all treated with preservatives. Inside the pub a new fireplace was created in the dining room. Curtain poles and curtains were hung. A decorative information blackboard has been secured above the bar and flooring behind the bar has been repaired. (34 volunteer days, £2,040)

Moat Farm – An access dam was removed on the south end and then focus was on the north end where the towpath and canal were dug out towards the lock. The excavator was kept busy dredging and shaping the canal bed extending the length that had been completed the previous year. Routine maintenance involving regular mowing of the grassy areas. The 'wilder' areas occasionally needed some intervention in order to enhance the habitats that have been created. Work on a 'Bug Hotel' and bird boxes to encourage a range of wildlife has been undertaken. (110 volunteer days, £7,150)

Over Basin – We were privileged to have a pair of swans nest on the site for the first time this year, and successfully raise six cygnets. The great wall is now almost completed, only awaiting backfilling before the cycle cave roof can be constructed, and then final landscaping. The overflow weir outfall bank is now completed and sown with wild flower/ grass seed. Heritage boat restoration maintenance continues with particular attention to Renton's front hold which has had a traditional narrow boat waterproof cover fitted in place of decking planks. Alder's front hold has new flooring and decking planks with a fitted waterproof canvas cover. We continue to run the boats weekly to ensure they remain in good condition, and that the navigation channel through the landslip area of Vineyard hill remains clear. As usual we have continued to maintain the site and gardens generally in good

condition, and to repair both site equipment and support The Wharf House generally. (690 volunteer days, £41,400)

Llanthony Lock – After complete restoration of one of the cottages the team turned their attention to an improved access via Hemmingsdale Road, crossing land already owned by H&G CT. Recycled hard core was used as a base and road planings added as a top dressing. A three metre wide metal gate and replacement fencing were erected at the new entrance. A fifty metre length of steel palisade fencing was installed to provide additional security to the site. The improvements mean that access to the car parking area will be restricted to tenants and volunteers. Much volunteer effort was spent with the usual activities of strimming and mowing. (80 volunteer days, £6,000)

Site income – Our restoration sites generated some income selling obsolete items and logs

Membership – A further increase of members has been recorded and the total now stands at 1369. New members actually recruited during the period according to our records is 60. Sadly, it is inevitable that we lose a few each year too. We thank members for their generosity and

those who donated to the **Land Fund, 225 Anniversary Appeal** and **Mill Barn Appeal**. (32 volunteer days with a value of £1,600).

The Wharfinger continues to impress both members and those who purchase it at various events. It is delivered by hand in most villages and in areas of Hereford and Gloucester cities. (120 volunteer days with a value of £7,200)

Grand Holiday Draw – raised about £2400 and is supported by companies donating the prizes. (5 volunteer days with a value of £300)


Socials – held in most months with a variety of speakers and topics. We have welcomed some members to speak on their knowledge and experience. (18 volunteer days, value £1,800)

Over Festival raised around £5,500. (120 volunteer days, value £7,200)

Oxenhall Open Day (13 volunteer days, value £780)

H&G Sales and Promotion teams visited shows in both counties and further afield at Crick and Braunston to maintain H&G Canal Trust's local and national profile in process raising £4,450. – (90 volunteer days, value £5,400)

Sustainability: H&G CT is committed to




THE OAK INN
Staplow HR8 1NP
01531 640954

A VERY WARM WELCOME AWAITS YOU AT OUR NEWLY REFURBISHED INN
OPEN FOR LUNCH AND DINNER EVERY DAY IN OUR COSY BAR AREAS OR RESTAURANT
GOOD SELECTION OF REAL ALES - GOOD BEER GUIDE 2009 & 2010

REAL LOG FIRES, FLAGSTONE FLOORS, OLD BEAMS & HOPS
PRETTY BEER GARDEN ~ PARTIES CATERED FOR ~ DOG FRIENDLY
THE ONLY PUB IN HEREFORDSHIRE THAT ABUTS THE LINE OF
THE HEREFORD AND GLOUCESTER CANAL

FOUR EN-SUITE B&B ROOMS NOW AVAILABLE
www.oakinnstaplow.co.uk



managing its activities in a sustainable manner wherever practical to do so. The photovoltaic cells at **The Wharf House** and energy efficiency measures at both **The Wharf House** and **Malswick House** continue to reduce our energy demands from the national grid and to generate income for H&G CT. All restoration sites recycle materials wherever possible. **L&PDT** secured a £20,000 grant towards designing a small hydro scheme on the River Leaddon which, combined with our extensive tree planting, helps bring H&G CT towards being carbon neutral.

The volunteer days recorded here add up to a value of around £188,000, but we know this does not reflect all the time dedicated to the business of H&GCT by our hard working volunteers.

The Council of Management thanks all volunteers for their effort and hard work to progress the development of the Canal and all those who have worked at **The Wharf House, Malswick House**, and on our promotional display and sales stands and to those who have assisted H&G CT in many other ways during the year.

MEMBERSHIP FORM

Please complete below and return this form to:

HEREFORDSHIRE & GLOUCESTERSHIRE CANAL TRUST
6 CASTLE STREET, HEREFORD HR1 2 NL

Name

Address

Post Code:

Telephone:

E-Mail:

Please give details of any skills you have which might assist us in our work.

Details of membership rates can be found on the inside back cover.

New member

☐

Renewal

☐

Gift

☐

Please help us to keep our subscriptions low and to accelerate our restoration progress by making a donation.

Subscription

£

Donation

£

Total payment

£

Thank You

GIFT AID: as a Registered Charity we can increase our income from subscriptions, and any donations, by one quarter provided you pay tax. If you DON'T pay tax or DON'T want us to do this tick this box.

☐

Date:

/

/

BANKER'S ORDER

To: (Name and Address of Bank)

Sort Code:

My A/C No.

Signed

Date

Please pay to account No. 11600694, Sort Code No. 16-21-20 of the Herefordshire and Gloucestershire Canal Trust at the Royal Bank of Scotland, 21 Broad St. Hereford, HR4 9AP, the sum of £ on this day and thereafter **annually** (on the anniversary) until further notice.

This instruction CANCELS any previous Annual Banker's Order in favour of the Canal Trust or former Society.

maintenance *matters...*

The H&G CT is keen to keep up with the regular maintenance on every site along the Canal. Here are some of the recent tasks undertaken by our Volunteers:

Burcott Road, Hereford

The Hereford Roving Team has made three visits to Burcott Road recently to tidy up the site and clear vegetation and trees away from the fence. Local business, Tudors, are renting approximately 80m of the site and this helps to keep their part of the site clear of unwanted vegetation. The clearance adjacent to the fence is nearly complete and when all the scrub is cleared from the line of the canal we will be ready to shred the debris.

»» John Pritchard



Pile ready for shredding.

Oxenhall

Our work on this site for the last year or more has involved clearance of vegetation and materials along the proposed line of the canal in order to prepare the ground so that an engineering survey for the restoration of the canal can go ahead. And of course, when you clear ground it has to be maintained in that state or all your efforts have been wasted.

Whilst work on the scaffolding next to the Dymock Road requires up to four volunteers (*see page 13-14*), any 'spare' volunteers took the opportunity to start cutting grass and reseeding where necessary. The caravan park next to our site by the aqueduct has recently been cleaned up which involved demolition of several unsightly sheds and erection of a new fence along the boundary. The work was done by a contractor who used our compound for parking vehicles and an excavator which chewed up the ground making it very uneven. There are also the remains of trees felled so that our whole site now needs some 'spring cleaning'.

»» Brian Fox



The contractor's excavator moves through the compound.



Some building materials and large stones suitable for rockeries are still available.

Council, other agencies and landowners. Terms for the Holmer development in Hereford were also agreed, and Mill Barn plans advanced. (270 volunteer days, £70,500.)

Charitable activities and achievements:

Aylestone Park – The Hereford Roving Team started life by attempting to remove the weed from the canal at Aylestone Park as well as tackling both banks. The Spill Weir is still waiting to have railings fitted. (25 volunteer days, £1,250)

Burcott Road – the undergrowth along the fence-line adjacent to Burcott Road tidied. (3 volunteer days, £195)

Kymin – The towpath has been maintained with some trimming and strimming. (12 volunteer days, £780)

Yarkhill – Maintained by both hand and tractor. (168 volunteer days, £6,825)

Dymock – Dymock Pool is filling up with water, giving a good picture of what the area will look like when the banks have greened up and the hundreds of trees we have planted burst into leaf and blossom. The towpath around the basin has been raked and grass seed sown. Volunteers continued to clear the weeds springing up between the trees and shrubs planted around the basin. The boundary fence to the neighbouring chapel has been erected by volunteers from Oxenhall, who also cleared a pathway for the chapel volunteers to get their mower to the newly fenced land. A planned borehole has been installed to keep the basin topped up. (15 volunteer days, £1,000)

Oxenhall – Much work has been done on the Willows section to keep it clear of brambles. Continual maintenance towards the lock has been kept up and the small garden below the cottage kept tidy. The wooden footbridge over the lock was found to be rotting away so remedial work was carried out to repair it. Another successful Open Day was held in September. (168 volunteer days, £10,000)

Newent – Work is carried out by both the Oxenhall team and an occasional weekend team. Old stock left by the previous tenants has been sorted and will be sold on to provide income for the Trust. Clearance of the old station platforms is continuing. Each platform is approximately 100 metres long, and to fulfil the Trust's vision of the Canal running between the platforms we have to ensure the walls are sound and ready to be increased in height and waterproofed. Engineers are currently working

on the design and specification to enable a satisfactory solution to the challenge. An area in the wooded area have been sprayed twice this year where small patches of the dreaded Japanese Knotweed were discovered. A permissive path for walkers has been maintained. (371 volunteer days, £12,100)

Malswick House – In the Spring a work-in began a series of projects at the Pub. The iron entrance railings were given a fresh coat of paint, the earth bund by the roadside was reshaped and seeded. At the back of the property next to the original line of the canal a large extension to the beer garden was created. Fences bounding the car park and the new garden extension were erected. Outside tables, seats, fencing and pergola were all treated with preservatives. Inside the pub a new fireplace was created in the dining room. Curtain poles and curtains were hung. A decorative information blackboard has been secured above the bar and flooring behind the bar has been repaired. (34 volunteer days, £2,040)

Moat Farm – An access dam was removed on the south end and then focus was on the north end where the towpath and canal were dug out towards the lock. The excavator was kept busy dredging and shaping the canal bed extending the length that had been completed the previous year. Routine maintenance involving regular mowing of the grassy areas. The 'wilder' areas occasionally needed some intervention in order to enhance the habitats that have been created. Work on a 'Bug Hotel' and bird boxes to encourage a range of wildlife has been undertaken. (110 volunteer days, £7,150)

Over Basin – We were privileged to have a pair of swans nest on the site for the first time this year, and successfully raise six cygnets. The great wall is now almost completed, only awaiting backfilling before the cycle cave roof can be constructed, and then final landscaping. The overflow weir outfall bank is now completed and sown with wild flower/ grass seed. Heritage boat restoration maintenance continues with particular attention to Renton's front hold which has had a traditional narrow boat waterproof cover fitted in place of decking planks. Alder's front hold has new flooring and decking planks with a fitted waterproof canvas cover. We continue to run the boats weekly to ensure they remain in good condition, and that the navigation channel through the landslip area of Vineyard hill remains clear. As usual we have continued to maintain the site and gardens generally in good

condition, and to repair both site equipment and support The Wharf House generally. (690 volunteer days, £41,400)

Llanthony Lock – After complete restoration of one of the cottages the team turned their attention to an improved access via Hemmingsdale Road, crossing land already owned by H&G CT. Recycled hard core was used as a base and road planings added as a top dressing. A three metre wide metal gate and replacement fencing were erected at the new entrance. A fifty metre length of steel palisade fencing was installed to provide additional security to the site. The improvements mean that access to the car parking area will be restricted to tenants and volunteers. Much volunteer effort was spent with the usual activities of strimming and mowing. (80 volunteer days, £6,000)

Site income – Our restoration sites generated some income selling obsolete items and logs

Membership – A further increase of members has been recorded and the total now stands at 1369. New members actually recruited during the period according to our records is 60. Sadly, it is inevitable that we lose a few each year too. We thank members for their generosity and

those who donated to the **Land Fund, 225 Anniversary Appeal and Mill Barn Appeal.** (32 volunteer days with a value of £1,600).

The Wharfinger continues to impress both members and those who purchase it at various events. It is delivered by hand in most villages and in areas of Hereford and Gloucester cities. (120 volunteer days with a value of £7,200)

Grand Holiday Draw – raised about £2400 and is supported by companies donating the prizes. (5 volunteer days with a value of £300)


Socials – held in most months with a variety of speakers and topics. We have welcomed some members to speak on their knowledge and experience. (18 volunteer days, value £1,800)

Over Festival raised around £5,500. (120 volunteer days, value £7,200)

Oxenhall Open Day (13 volunteer days, value £780)

H&G Sales and Promotion teams visited shows in both counties and further afield at Crick and Braunston to maintain H&G Canal Trust's local and national profile in process raising £4,450. – (90 volunteer days, value £5,400)

Sustainability: H&G CT is committed to



THE OAK INN
Staplow HR8 1NP
01531 640954

A VERY WARM WELCOME AWAITS YOU AT OUR NEWLY REFURBISHED INN
OPEN FOR LUNCH AND DINNER EVERY DAY IN OUR COSY BAR AREAS OR RESTAURANT
GOOD SELECTION OF REAL ALES - GOOD BEER GUIDE 2009 & 2010

REAL LOG FIRES, FLAGSTONE FLOORS, OLD BEAMS & HOPS
PRETTY BEER GARDEN ~ PARTIES CATERED FOR ~ DOG FRIENDLY
THE ONLY PUB IN HEREFORDSHIRE THAT ABUTS THE LINE OF
THE HEREFORD AND GLOUCESTER CANAL

FOUR EN-SUITE B&B ROOMS NOW AVAILABLE
www.oakinnstaplow.co.uk

AA
Guest Accommodation
★★★★

managing its activities in a sustainable manner wherever practical to do so. The photovoltaic cells at **The Wharf House** and energy efficiency measures at both **The Wharf House** and **Malswick House** continue to reduce our energy demands from the national grid and to generate income for H&G CT. All restoration sites recycle materials wherever possible. **L&PDT** secured a £20,000 grant towards designing a small hydro scheme on the River Leadon which, combined with our extensive tree planting, helps bring H&G CT towards being carbon neutral.

The volunteer days recorded here add up to a value of around £188,000, but we know this does not reflect all the time dedicated to the business of H&GCT by our hard working volunteers.

The Council of Management thanks all volunteers for their effort and hard work to progress the development of the Canal and all those who have worked at **The Wharf House, Malswick House**, and on our promotional display and sales stands and to those who have assisted H&G CT in many other ways during the year.

MEMBERSHIP FORM

Please complete below and return this form to:

HEREFORDSHIRE & GLOUCESTERSHIRE CANAL TRUST
6 CASTLE STREET, HEREFORD HR1 2 NL

Name

Address

Post Code:

Telephone:

E-Mail:

Please give details of any skills you have which might assist us in our work.

Details of membership rates can be found on the inside back cover.

New member ☐

Renewal ☐ Gift ☐

Please help us to keep our subscriptions low and to accelerate our restoration progress by making a donation.

Subscription £

Donation £

Total payment £

Thank You

GIFT AID: as a Registered Charity we can increase our income from subscriptions, and any donations, by one quarter provided you pay tax. If you DON'T pay tax or DON'T want us to do this tick this box. ☐

Date: / /

BANKER'S ORDER

To: (Name and Address of Bank)

Sort Code:

My A/C No.

Signed

Date

Please pay to account No. 11600694, Sort Code No. 16-21-20 of the Herefordshire and Gloucestershire Canal Trust at the Royal Bank of Scotland, 21 Broad St. Hereford, HR4 9AP, the sum of £ on this day and thereafter **annually** (on the anniversary) until further notice.

This instruction CANCELS any previous Annual Banker's Order in favour of the Canal Trust or former Society.

maintenance *matters...*

The H&G CT is keen to keep up with the regular maintenance on every site along the Canal. Here are some of the recent tasks undertaken by our Volunteers:

Burcott Road, Hereford

The Hereford Roving Team has made three visits to Burcott Road recently to tidy up the site and clear vegetation and trees away from the fence. Local business, Tudors, are renting approximately 80m of the site and this helps to keep their part of the site clear of unwanted vegetation. The clearance adjacent to the fence is nearly complete and when all the scrub is cleared from the line of the canal we will be ready to shred the debris.

»» John Pritchard



Pile ready for shredding.

Oxenhall

Our work on this site for the last year or more has involved clearance of vegetation and materials along the proposed line of the canal in order to prepare the ground so that an engineering survey for the restoration of the canal can go ahead. And of course, when you clear ground it has to be maintained in that state or all your efforts have been wasted.

Whilst work on the scaffolding next to the Dymock Road requires up to four volunteers (*see page 13-14*), any 'spare' volunteers took the opportunity to start cutting grass and reseeding where necessary. The caravan park next to our site by the aqueduct has recently been cleaned up which involved demolition of several unsightly sheds and erection of a new fence along the boundary. The work was done by a contractor who used our compound for parking vehicles and an excavator which chewed up the ground making it very uneven. There are also the remains of trees felled so that our whole site now needs some 'spring cleaning'.

»» Brian Fox



The contractor's excavator moves through the compound.



Some building materials and large stones suitable for rockeries are still available.

Brian Fox

Over Basin

Mooring Rings

We have always had a shortage of permanent mooring rings on the main site side of the basin. When we discovered that there was an unusable one located behind the residents railings on the far side of the basin, Terry was only too pleased to dig it out and move it to a more convenient position near to the pontoon.

The Wharf House Yard

After extending The Wharf House yard, the fence was left with a rather patchwork look about it (see *issue 131*). So it is now being smartened up by Pat who is giving the whole fence a fresh coat of fence preservative.

General site maintenance

Cutting back of shrubs and mowing the grass is well underway again, as is the Model Boat Club weed clearance programme, which this time produced an enormous quantity of weed draining on the banks, so much so that we had to resort to the tractor to clear it all away.

»» Ted Beagles



Terry repositions the mooring ring into a more convenient position.



Tim loads the weed on to the tractor.

Would you like to get involved?

You will be made most welcome on any of our sites, please contact:

Hereford Roving Team – Thursdays

John Pritchard on 01432 272972

johnpritchard32@btinternet.com

Yarkhill – Thursdays

Chris High on 01568 615 575

chris@chrishigh.plus.com

Oxenhall – Tuesdays

Brian Fox on 01432 358 628

brianfox74@gmail.com

Newent Station – Saturdays

Wilf Jones on 01452 413 888

wilfredjones506@gmail.com

Over Basin/Vineyard Hill – Wednesdays

Ted Beagles on 01452 522 648

tedbeagles@blueyonder.co.uk

Thank you Martyn

Martyn Tilford became the site leader for the Moat Farm Project in 2012. He has led the team for the past 5 years and helped deliver the canal channel we see today.

We have enjoyed his reports in *The Wharfinger* and his quirky headgear. Thank you Martyn for all you have done at Moat Farm and especially the importance you and your team have put on encouraging the fantastic range of wildlife there (see pages 28/29). Job well done. **Thank you**



PLEASE NOTE: Public access to the Moat Farm site is unavailable at present but the Trust is working on proposals to develop this.

OVER FESTIVAL

on the canal 2017



Over Basin nr Gloucester

Sat. 19 – Sun. 20 August, 11am – 5pm

Canal Festival on the Water!

Boat Trips, Rescue Displays, Heritage Boats,
Model Boats, Sailing4Disabled

Food & Fun on the land

Teas, Sandwiches & Cakes, Ice Creams,
Crafts & Local Produce, Childrens' Games,
Treasure Hunt ... *and much more!*

Beer Festival and Live Music

at The Wharf House

Saturday 19 August, 11am – 11pm

Sunday 20 August, 11am – 5pm

Live Music, Beers & Ciders,
BBQ, Cream Teas

FREE Admission



All proceeds towards the Mill Barn Appeal!

heritage boats

by Ted Beagles

Mister Maysey

Mister Maysey's outboard engine has been removed for routine servicing by the local agent. Removal is now a much more difficult task, since we fitted a rudder extension to improve low speed handling. Now it requires a person in the water, another laying on the deck with a third passing tools.

Renton

Renton now has a fine traditional narrow boat cover over the front hold. The recent inclement weather has proven it to be water tight. We were very fortunate that member Ian Thompson read the item in *The Wharfinger* when we were starting on the project, and got in touch to offer us a full set of almost new canvases that he was about to remove from his boat Tenacious, in order to fit a steel cabin. These were approximately the correct size needed, and after a bit of head scratching by Ernest and Graham, a few modifications and adding of appropriate fastenings they fitted almost perfectly.

Thank you Ian.

»» TB



Mike, Dave and Graham remove the rudder to enable access to Mister Maysey's engine.



Ernest and Graham make final adjustments to Renton's smart front hold cover



Renton's new cover over the front hold and the traditional diamond cratch board designed by Pat.

Ted Beagles



nature watch

by Alan McBride

Since starting restoration work at the Moat Farm site our team has tried to include features that would provide a range of habitats. Modern environmental thinking suggests that this is a good way to increase

biodiversity. Although the site was full of life when we started work it was dominated by brambles, common elder and nettles.

A variety of habitats has been our aim. These include bug boxes, rotten wood piles, a stumpery, a bug hotel and a not so little, little owl box.

In addition we have planted many native trees: alder, hazel, oak, wild cherry and silver birch – most of which are doing well. A local farmer offered the Trust a large number of native daffodil bulbs and thanks to the back-breaking efforts of H and G volunteers we had a share of them – most of which have flowered for the last two years.

Mowing may not seem a very natural way to enhance biodiversity, but at the Moat Farm site we carry it out in two ways: first the towpath is mowed every week or fortnight during the growing season to promote the growth of the grass; second, some areas are mowed early in the year and in the autumn to allow wild flowers to compete with more invasive species. This year we have seen a big increase in cowslips and bluebells thanks to the twice-yearly mowing.

Clearly the Canal is a catalyst that will promote more diverse and sustainable wildlife for ourselves and our children.



A bug box



Little owl box



A bug hotel



Rotten wood piles



Cowslips at Moat Farm

Ted Beagles, Alan McBride and Malcolm Claxton

Good News at Over

Sam and Sadie have returned to nest at Over Basin!

We are pleased to welcome back the pair of nesting swans, named by residents as Sadie and Sam, to Over Basin. We remind visitors to the Basin to keep a distance from these powerful birds whilst they bring up their young.

New native saplings have been planted and the grass is mown allowing wild flowers to establish.

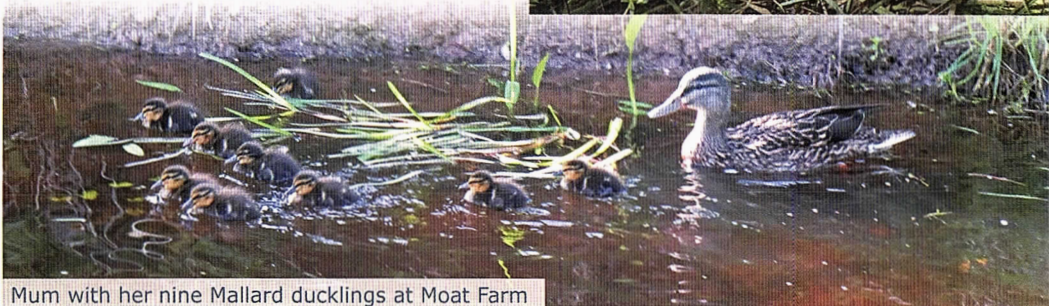
Finally the canal itself is a very productive ecosystem. Water encourages insect life, attracting birds that can lead to fish (from fish eggs brought in on the birds' legs). At our site we have had a visit from a lone male swan (no fish yet and no lady swans, so only a short stay). Also kingfishers, ducks, wagtails and several other water-loving birds have visited.

Future projects could involve more bird boxes (owl boxes seem to be favoured), a rocky bank and a wetland pond area. Clearly the canal is a catalyst that will promote more diverse and sustainable wildlife for years to come.

»» AM

Left: Masses of primoses take advantage of the mown canal bank at Over.

Below: Sadie and Sam sit patiently on their next batch of eggs!



Mum with her nine Mallard ducklings at Moat Farm

KEYWAY

NATIONWIDE PLANT RENTAL



Over 50 years experience
Quick response time
Extensive fleet of latest equipment



With more than £7m invested annually and a fleet of 1000, Keyway offers the most comprehensive range of equipment and support services for our customers and operators.



Welcome to the Keyway Group – *Extensive range of equipment, personal customer care*



Nationwide Plant Rental



Transport & Bulk Excavation



Recycling & Aggregates



Skip Hire



Plant Sales



Keyway provides a complete recycling and waste management service to the construction and demolition industry operating a fleet of specialist vehicles within the south west region.

We seek to provide value for money and improved environmental solutions for all our customer needs. www.keyway.co.uk



UK CONSTRUCTION RECRUITMENT is a leading employment agency specialising in the supply of temporary construction staff for the built environment. www.ukcr.co.uk

NATIONWIDE STONE SUPPLIES



NATIONWIDE STONE SUPPLIES specialises in providing all of your aggregate solutions no matter the size and scale of your project. www.nationwidestonesupplies.co.uk

For further information please contact us on
T: 0845 241 81 81 | E: plant@keyway.co.uk | www.keyway.co.uk

National Waterways Museum

Gloucester

by Norman Mitchell

The Waterways Museum is fully open for visitors and boat trips.

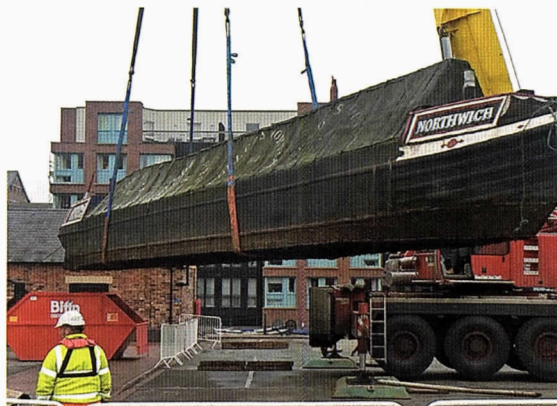
The railway wagons have been moved off site, all but one narrow boat have been taken to storage in the North and Northwich has been craned onto the land alongside the warehouse soon to become a static display for the public. Inside the launch Bluebird, which was displayed on the first floor, has been exchanged for a smaller pleasure boat Bluebelle, at one time regularly moored in the Barge Arm. The exercise to get these two swapped was a splendid example of very skilled lifting and moving awkward sized items. We must hand it to the contractors who lifted the first boat off a first floor scaffold platform on to a trailer and then replaced it with the Gloucester registered Bluebelle.

Don't be put off by the Herras fencing which seems to cut us off from the rest of the Docks. We are open and accessible via a narrow way along the Barge Arm or down the steps off Llanthony Road by the Fielding Engine House and the Pub.

Sabrina 5 will soon be back in the Barge Arm and once all the services are connected and a ramp or lift installed for easy access for all she will be open to our visitors, schools and other groups. She should be in position for the Tall Ships Festival.

Steaming the Dredger and the steam crane will be features of the Tall ships weekend and we hope to steam on a number of other occasions in the future this year.

» NM



Northwich is craned alongside the warehouse.



Pleasure boat Bluebelle is raised to the first floor.



Norman Mitchell

The launch Bluebird is craned out of the museum.

History File ...

ARTHUR CLARKE GROCER OF NEWENT

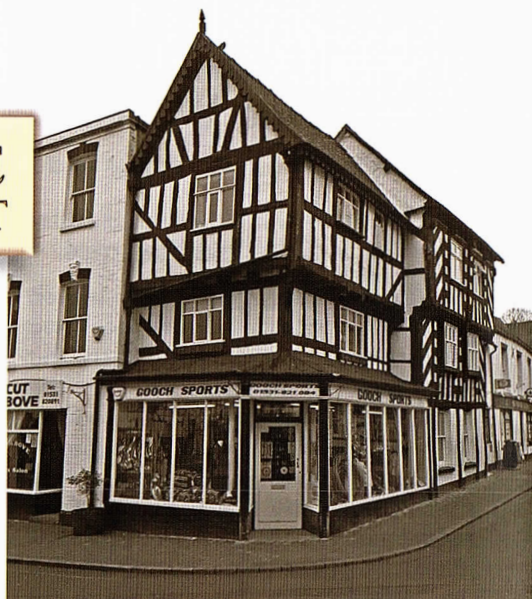
by Nigel Jefferies

The market town of Newent, Gloucestershire, figures prominently in the history of the Herefordshire and Gloucestershire Canal Navigation.

As David Bick, the author of the first authoritative book about the Canal points out¹ the promoters of the Canal used the presence of a coalfield to the northwest of the town to encourage investment in the proposed Canal. When the Canal was completed to the town in 1795, it began to contribute to its expansion and increasing prosperity.

The first census in England and Wales was held in 1801. In 1851 the occupation of the people listed was first recorded. In the 1861 census Arthur Clarke was listed as head of the family and living at 32, Lewall Street, Newent. He is described as a grocer, aged 24 who had been born in Birmingham. Due to the location of his shop, it was referred to as "the corner shop". Also living at the address was his wife Ellen Clarke, who was aged 29 and had been born at Upleadon.

Fortunately, Clarke was a diligent book-keeper who kept a record of his expenditure. As can be seen from two invoices opposite, dated from the 1860's, we know he obtained some of his goods from Bristol, via the Hereford and Gloucester Canal, which were delivered by Danks, Venn & Sanders. The invoices record he obtained sugar, soap and soda. Sugar was delivered in bags containing a tierce, which was a weight of 1 to 1.75



The former grocery shop of Arthur Clarke in Lewall Street, Newent, as it is today.

hundredweight, the soap was supplied in boxes and the soda in casks of 3 to 4 hundredweight. When Stephen Ballard was Clerk to the Canal Company, he ordered that lockkeepers should ensure that boats carrying groceries should not be hindered in passing the locks and that other boats should give way and allow such regular carrying boats to pass first.²

Many historians record the canal network provided the first reliable means of distributing goods, particularly bulk commodities. When the railways were constructed and steam locomotives adopted, they provided a more extensive and rapid means of distribution. Both means of transportation contributed to Great Britain becoming the powerhouse of the middle years of the nineteenth century³. Indicative of this rise was that in 1764 when Hargreaves invented the spinning jenny, cotton exports were £200,000 per annum; in 1806 they stood at £9.75 million⁴ and it was during this period that the canal system was largely constructed.

»»» NJ

Mr. A. Clarke
Newport
Dr. to DANKS, VENN, & SANDERS,
 Carriers on the Severn and Canals,
 Between Bewdley, Stourport, Worcester, Gloucester and Bristol, Dudley, Kidderminster, Stourbridge, Wolverhampton,
 Birmingham, Ladbury, and Hereford; and to and from Gloucester, Newport, Cardiff, and Swansea.
 FROM WHENCE GOODS ARE CAREFULLY AND EXPEDITIOUSLY FORWARDED TO ALL PARTS OF THE KINGDOM.

NOTICE—DANKS, VENN, & SANDERS will not be accountable for any Packages containing Money in Cash or Bills, Jewellery, Bullion, Plate, China, Glass, Veneering, Apparel, Furniture, Tapestry, or other valuable articles in packages or otherwise, unless the same be described and insured according to their value, and paid for at the time of delivery, and will not be accountable for any goods improperly packed, directed, or described; and all goods remaining at any of the Wharves, or Warehouses for twelve months, will be at the risk of all parties to whom such goods are consigned; and all Goods consigned by Road, Water, & Railway, for the purpose of being delivered, will be consigned at one transit, after which, at their option, to be paid upon payment, not only for the money due for the delivery and carriage balance, but also for any loss or damage will be allowed, unless made in writing within Three days after the Goods are delivered.

FROM	TO	T.	C.	Q.	LB.	RATE	PAID ON	AMOUNT.
<i>Sept 20 8 Tons</i>	<i>Worcester</i>	1	2	2				16
<i>Sept 20 2 Boxes Soap</i>	"	4	1	2				2
<i>Sept 20 1 Tonne Sugar</i>	"	11	0	2				16
<i>Sept 20 1 "</i>	"	10	2	20				16
								<u>120</u>

Paid Sept 20/62 J.G. Howells

Mr. A. Clarke
Newport
Dr. to DANKS VENN, & SANDERS,
 Carriers on the Severn and Canals,
 BETWEEN BEWDLEY, STOURPORT, WORCESTER, GLOUCESTER & BRISTOL, DUDLEY, KIDDERMINSTER, STOURBRIDGE,
 Wolverhampton, Birmingham, Ladbury and Hereford; and to and from Gloucester, Newport, Cardiff, and Swansea.
 FROM WHENCE GOODS ARE CAREFULLY AND EXPEDITIOUSLY FORWARDED TO ALL PARTS OF THE KINGDOM.

NOTICE—DANKS, VENN, & SANDERS will not be accountable for any Packages containing Money in Cash or Bills, Jewellery, Bullion, Plate, China, Glass, Veneering, Apparel, Furniture, Tapestry, or other valuable articles in packages or otherwise, unless the same be described and insured according to their value and paid for at the time of delivery, and will not be accountable for any goods improperly packed, directed, or described; and all goods remaining at any of their Wharves, or Warehouses for twelve months, will be at the risk of all parties to whom such Goods are consigned; and all Goods consigned by Road, Water, & Railway, for the purpose of being delivered, will be consigned at one transit, after which, at their option, to be paid upon payment, not only for the money due for the delivery and carriage balance, but also for any loss or damage will be allowed, unless made in writing within Three days after the Goods are delivered.

FROM	TO	T.	C.	Q.	LB.	RATE	PAID ON	AMOUNT.
<i>March 20 2 Tons Sugar</i>	<i>Worcester</i>	1	2	2				16
<i>" 10 Tons "</i>	"	1	2	2				16
<i>April 20 2 Casks Soap</i>	"	4	1	2				2
								<u>13.2</u>

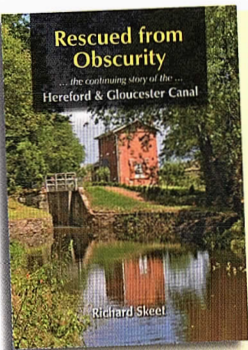
Since June 2/62 J.G. Howells

1 The Hereford and Gloucester Canal by David BICK, published by The Oakwood Press – ISBN 0 85361 599 3

2 Rescued from Obscurity by Richard SKEET, published by The Herefordshire and Gloucestershire Canal Trust – ISBN 978-0-9929441-0-0

3 Man of Iron by Julian GLOVER, published by Bloomsbury – ISBN 978-1-4088-3746-7

4 William Pitt the Younger by William HAGUE, published by Harper Collins – ISBN 0-00-714719-8



... to learn more about the history
 of the Hereford & Gloucester Canal ...

Rescued from Obscurity

the continuing story of the Hereford & Gloucester Canal by Richard Skeet

200 page paperback, over 200 illustrations and photographs. Price £10 + £2 P&P

Please make cheques payable to Herefordshire & Gloucestershire Canal Trust and send to Janet Moulton, H&G Sales and Promotion, 18, Coningsby Court, Coningsby Street, Hereford, HR1 2DF. Also available from The Wharf House.



Outings 2017

by Janet Moulton
and Maggie Jones

Why not have a good day out with the H&G CT?

*The Sales and Promotion teams are
expecting to attend the following
events in 2017.*

May 28	Dymock Music Festival
June 10	Ledbury Community Day
June 10-11	Hellens Garden Festival, Herefordshire
June 24-25	Historic Narrowboat Rally, Braunston, Northamptonshire
August 19-20	Over Festival, Over Canal Basin, Gloucester
Sept. 16	Oxenhall and Newent Open Day

*Please note this change of the date from
the last edition.*

Nov. 25	H&G CT Winter Bazaar, Ledbury
---------	----------------------------------

We welcome additional volunteers to help promote the Canal; no experience necessary – just come and be part of our team – we will do our best to put you at ease and to find a task that you will enjoy. Your admission to the event will be free and we always try to ensure that you have some time to look around. We would like to attend other local shows so if you know of any please talk to Janet or Maggie, or contact us via the website h-g-canal.org.uk.

» JM/MJ



MALSWICK HOUSE

TRADITIONAL INN • FOOD • FUNCTIONS

Saturday 26th August 2017 from 4pm



*Beer & Cider
Live Music &
Hog Roast*

Bring along your friends and family!



01531 822 634

www.malswickhouse.co.uk
B4215, Newent, GL18 1HE
enquiries@malswickhouse.co.uk



Gloucester & District Model Boat Club

David Excell

The weather in January and February has not been welcoming to model boating, raining or mizzling and with bitterly cold winds.

However this has not stopped our hardy band of Micromagic sailors who have turned out in terrible weather to sail the winter series, whoever wins will be a true hero, your scribe, not a sailor has ventured out a few times and has "invented" a way of stopping gas canisters from freezing in cold weather and a method that is 100% safe, no naked flames and has successfully sailed in the wintry conditions. Ice has yet again not been a problem this winter (so far) now that the daffodils are out spring will surely follow.

It hasn't been all fun as you can see from the photograph we have had an early weeding session, Rodney's chain weeder works wonders and unlike the previous blade arrangement it also fetched the weed out as well as cutting it. Also there appeared a fiendish triangular device, a sort of double sided rake, which we used this time and this was also very good at the job.

This work is for the mutual benefit of everyone, and later that day I drove to Stonehouse along the Stroudwater canal where the locks by contrast were completely full of greenstuff. »» **DE**

Gloucester & District Model Boat Club

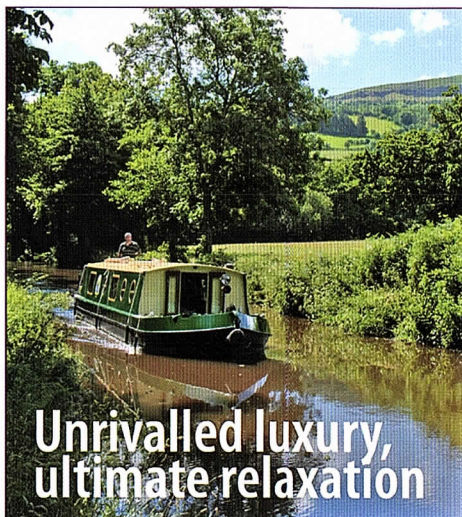
Sails at Over basin on Wednesday, Friday and Sunday afternoons (weather permitting). You should find somebody sailing between 1.00pm and 4.00pm. The Club members will be pleased to talk to you about their models and the Club. Members have models of all descriptions including amphibious craft. Yachts are very popular.

Chairman. Edward Tedaldi.



David Excell

Piles of pond weed resting on the side for creatures to return to the water.



Unwind however you choose, and for as long as you like, in the splendour of the Brecon Beacons on the Monmouthshire and Brecon Canal.

To know more: 01873 858277

www.beaconparkboats.com



Everything Canal Boats

*Services from 10 marinas in the UK and
boating holidays from 16 locations.*

- Boating Holidays
- Boat Sales
- Day Boat Hire
- Boat Builders
- Chandlery & Repairs
- Marina Services
- Moorings
- Canalside Holiday Cottages



Scan Me

www.everythingcanalboats.com

Call Us: 0330 333 0595



Well we start off with very good news, Mill Barn, I had a very encouraging conversation the other day with some "very high up the ladder" in the Mill Barn Project. We very much look forward to being able to use the new wheelchair-friendly facilities when it is built.

We've survived another winter on the water, but with a record amount of Swedish meatballs in a curry stew saved on the heating bill. We've had a few new faces, who have enjoyed a journey in the Wheelyboat and curry meatballs not to mention the cake!

We will be welcoming our first, of hopefully, many disabled school visits as we are awaiting the arrival of Barrs Court School from Hereford. The Wheelyboat is a great resource that we want to see fully utilised. We hope their visit is the start of bigger things to come so we can welcome other schools too. All the effort has been put in by so many to make this sort of opportunity possible.

Now that the better weather is here we will be seeing more new faces, this also means that more people get to know what great work all the H&G volunteers have done. »» **PB**

Sailing4Disabled

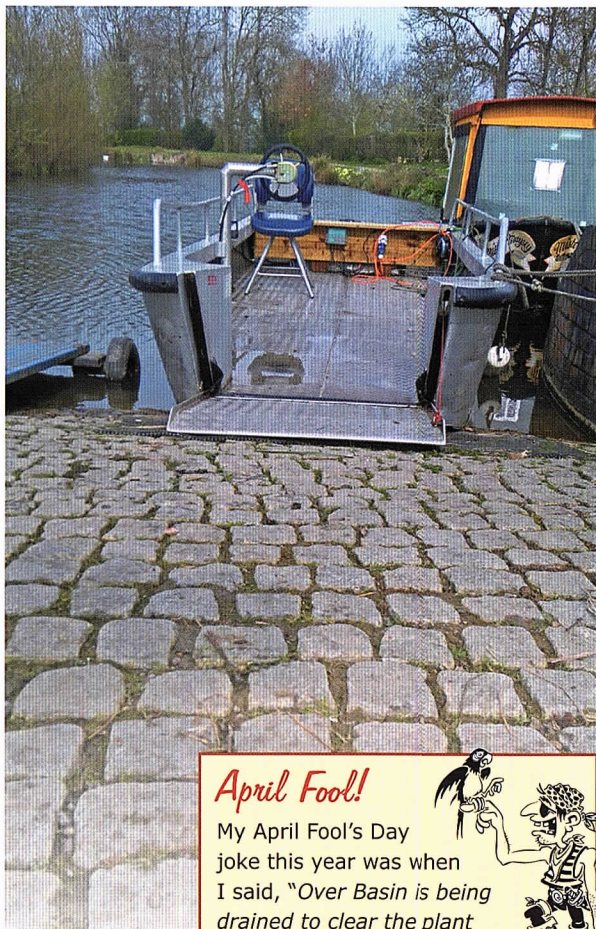
meets every Tuesday at

Over Canal Basin from 11.00 to 14.00.

It is open to everyone – whether they have a disability or not.

Pete (Long Gone Silver) Bisson: 07913 015018

peterwb49@hotmail.com www.sailing4disabled.org.uk



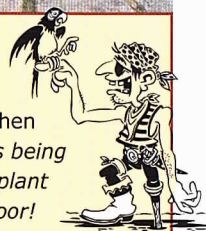
The wheelyboat poised on the slipway to welcome the pupils of Barrs Court School.

April Fool!

My April Fool's Day joke this year was when I said, "Over Basin is being drained to clear the plant life from the canal floor! We require 1417 people with buckets to empty it!"

I was asked if they should use a JCB, to save all that man power!

(Note 1417 is 1st April 17...)

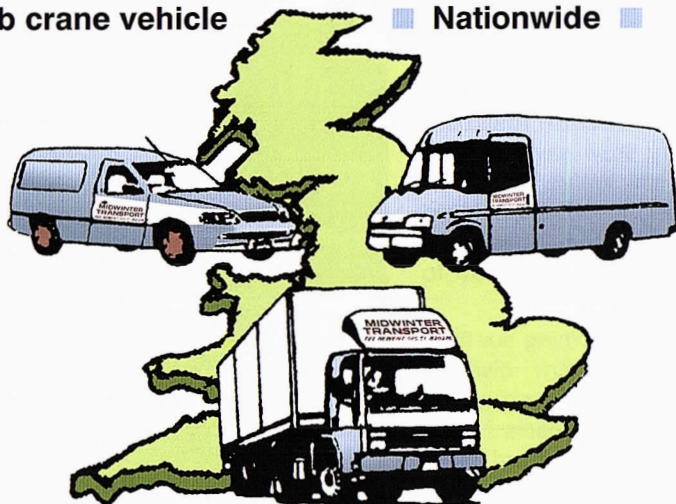


MIDWINTER TRANSPORT

ESTABLISHED 30 YEARS

With a full range of vehicles including

- flat curtain sided and refrigerated ■
- from half tonne Escort to 38 tonne artic ■
- Hiab crane vehicle ■ Nationwide ■



TOTALLY COMMITTED TO DELIVER

Newent 01531 820276

Fax: 01531 822247

Strawberry Hill, Newent, GL18 1LH

www.midwintertransport.co.uk

email: midwintertransport@yahoo.co.uk

Your help please?

Over Festival



Our preparations are underway for this year's Festival at Over Basin on 19 and 20 August (see page 26). We look to our cake makers who have provided us with some very tempting cakes for our refreshments tent. If you are able to help with this we would be very grateful.

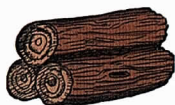
Thank you

We are also looking for donations of bottles or other small gifts that can be added to our Tombola stall please. Secondhand books are also welcomed, please, but as there are a few months to go before the event, we would ask if you could let us have these donations closer to the Festival as storage would be a challenge.

Thank you

logs and cordwood

Keep those log burners topped up!



There is always a good supply of logs available from **Malswick House**, an ideal excuse to visit the pub!!

willow bean sticks

Strong willow bean sticks are available at Over. Prices: 6 x 8ft £2.80, 6 x 7ft £2.50, 6 x 6ft £2.00 – all proceeds to H&G CT.

Contact Mike Bowden 01452 790459



The Inland
Waterways
Association

**Gloucestershire
& Herefordshire
IWA Branch**

**The next series of Social Meetings
will commence in September**

Further details contact: **Roger Holmes**
email: rogervectis@aol.com 01594 840 316

not quite
^... the last page!

Old Fivers



If you still have any old paper £5 notes hanging around, be warned, as they became obsolete from Friday, May 5. The Bank Of England says shops will no longer accept the Elizabeth Fry fivers.

It is estimated that there are almost 165 million old £5 notes still out there, so if a few float our way we will put them to good use. It is possible that High Street banks and the Post Office may swap them for the new polymer notes, but if not, all is not lost as H&GCT will gladly accept them towards our funds. Please bring to The Wharf House or hand to Janet Moulton at one of the Socials (see page 18).

Thank you

Advertising in **The Wharfinger**

Show the support of your business by advertising in **The Wharfinger**. Rates from £39 per issue and we will gladly design your advertisement free of charge. Contact: The Wharf House
01452 332 900 thewharfhouse@yahoo.co.uk

Page List of Advertisers:

- 35 Beacon Park Boats
- 2 Beta Marine
- 40 Braunston Brokerage/Marina
- 36 Everything Canal Boats
- 4 Geoffrey Urch Garden Services
- 4 Gloucester Quays
- 14 E.B Hayward & Co Ltd.
- 30 Keyway
- 10 Malswick House
- 39 Midwinter Transport
- 8 Moat Contracting
- 15 Print Plus
- 4 RCR (River Canal Rescue)
- 22 The Oak Inn, Staplow
- 10 The Wharf House

**Please support our advertisers –
SUPPORT OUR SUPPORTERS**

Copy deadline for the next issue
MONDAY, 26 JUNE

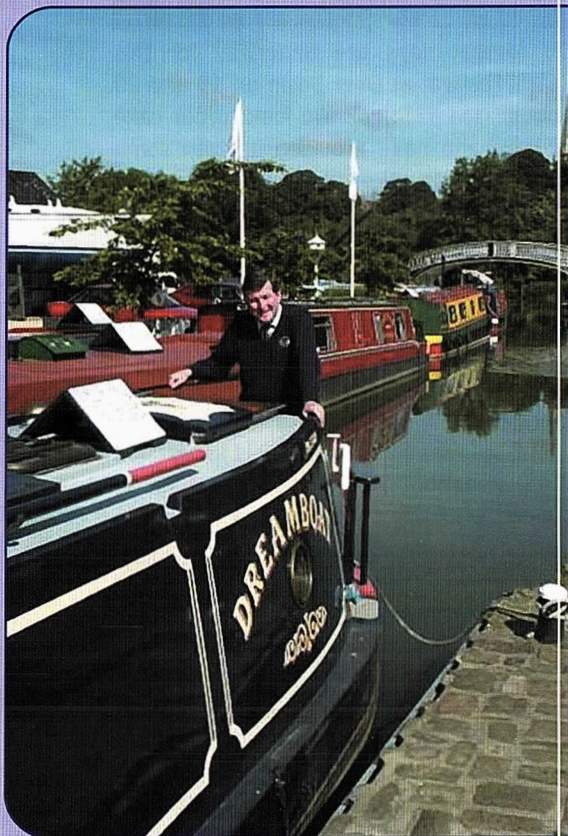
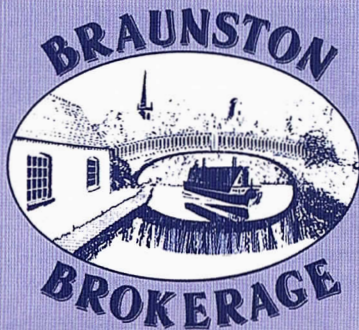
Buying or selling your DREAMBOAT?

*Then make Braunston Brokerage
– at the heart of England's
waterways – your first port of call!*

*Established in 1988, we are
a major player in the selling
of narrowboats – new and
secondhand – with a
reputation for professionalism
that is second to none.*

*Our marina offers the fullest
range of support services.
Uniquely, we have two dry
docks on-site for surveys,
hull-blackening, repaints, sign-
writing and below waterline
repairs. Also engineering and
refit facilities.*

*Sell your Dreamboat
where it will be seen!*



For full information – including our
competitive brokerage package –
contact Tim Coghlan at:

Braunston Marina Limited, Braunston,
Nr Daventry, Northants NN11 7JH

Telephone 01788 891373

Fax 01788 891436

Website: www.braunstonmarina.co.uk

Email: sales@braunstonmarina.co.uk

Want to help?

The Canal Trust is always in need of new volunteers as our activities continue to expand. We can normally find a use for any skill from gardeners to first aiders, brickies

to those willing to help with a shovel, pen or laptop. The H&G CT also welcomes offers of gifts of good quality used tools and machinery from those who no longer need or cannot use it.

Contacts

Contact any of these names TODAY!

Cliff Penny

01432 820 866
canal@penny-ep.co.uk

David Penny

01452 332 900
david@thewharfhouse.co.uk

Wilf Jones

01452 413 888
wilfredjones506@gmail.com

Ted Beagles

01452 522 648
tedbeagles@blueyonder.co.uk

Brian Fox

01432 358 628
briandfox74@gmail.com

Nigel Jefferies

Two Hollylea Close, Bartestree,
Hereford, HR1 4DN
01432 850 661
ncjefferies@talktalk.net

Maggie Jones

01452 618 010
maggiejones@blueyonder.co.uk

John Pritchard

01432 272972
johnpritchard32@btinternet.com

Chris High

01568 615 575
chris@chrishigh.plus.com

"Who does what ..."

is inside the front cover.

H&G Sales and Promotion

Mail Order Sales
Janet Mould
18, Coningsby Court,
Coningsby Street,
Hereford, HR1 2DF
01432 264 366
jmould@tiscali.co.uk

Legal & Project Development Team

01452 332 900
lpdt@thewharfhouse.co.uk

Janice Lyall

07884 266 947
janice.lyall@myndblue.co.uk

General enquiries:

information@h-g-canal.org.uk

Visit our websites:

H&G Canal Trust

www.h-g-canal.org.uk

THE WHARF HOUSE

www.thewharfhouse.co.uk



'Like Us' on Facebook

www.facebook.com/hgcanaltrust

www.facebook.com/TheWharfHouse

www.facebook.com/malswickhouse

Want to join?

H&G CT UK Membership Rates

Please support our voluntary work by becoming a Member of the H&G CT. A membership form is available online or from THE WHARF HOUSE.

	Annual	Life
Individual	£10	£200
Joint/Family	£15	£300
Senior Citizen	£7.50	£115
Joint Senior Citizen	£10	£150
Corporate	£25	£500

PLEASE NOTE: All subscriptions and donations are treated as being made under the Gift Aid scheme unless you state that you do not wish us to do this. Payment made by Standing Order greatly assists us and payment remains under your control. All payments to: H&G CT, 6, Castle Street, Hereford, HR1 2NL

Unless specifically stated opinions expressed are those of the author and do not necessarily reflect the policy of the Herefordshire & Gloucestershire Canal Trust. As a Registered Charity, with defined objectives, we cannot endorse the content of any specific advertisement, product or services. The Trust accepts no liability for any matter, or advertising, contained in this magazine. Reproduction of extracts from the magazine is welcomed provided that full acknowledgement is given.

Membership records are computerised. Your entry is available for inspection if you send a SAE to the Membership Secretary.

We try to ensure details of talks/events are correct – please verify with the relevant organiser if travelling long distances.

© 2017 Published by the Herefordshire & Gloucestershire Canal Trust.

The Wharf House Company Ltd [No. 4627931] is part of the Herefordshire & Gloucestershire Canal Trust Ltd group of companies. The Herefordshire & Gloucestershire Canal Trust is a non-profit distributing company limited by guarantee [No. 2704407] and is a registered charity [No. 1010721].

Registered Office: The Wharf House, Over Canal Basin, Over, Gloucester, GL2 8DB.

Hereford

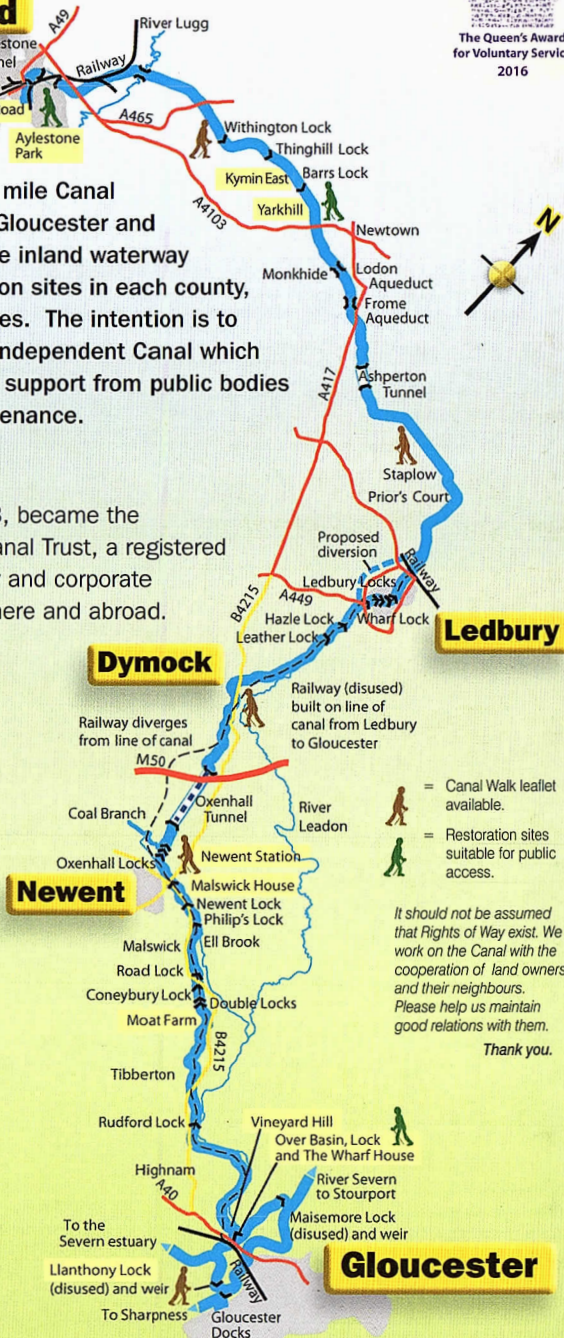
Our objective is to rebuild the 34 mile Canal linking the centre of Hereford to Gloucester and its connection with the 2,500 mile inland waterway network. We have major restoration sites in each county, together extending to some 4 miles. The intention is to provide a financially sustainable independent Canal which does not require regular financial support from public bodies for its future operation and maintenance.

The H&G Canal Trust

The Canal Society, formed in 1983, became the Herefordshire & Gloucestershire Canal Trust, a registered charity, in 1992. It has an ordinary and corporate membership approaching 1,400, here and abroad.

The original Herefordshire & Gloucestershire Canal

Work started in 1792 reaching Ledbury from Gloucester by 1798. In 1827 Steven Ballard was appointed to oversee the Canal's completion, which reached Hereford in 1845; this was one of the last major canal routes completed in Britain. The Canal stretched from the River Severn at Gloucester, via Newent, Dymock and Ledbury to Hereford, using 22 locks and 3 tunnels. It was closed in 1881 to allow construction of the Ledbury-Gloucester railway which in turn closed in 1964.



Gloucester Quays

Experience More

Map based on original by Martin Ludgate, Canal Boat Magazine.