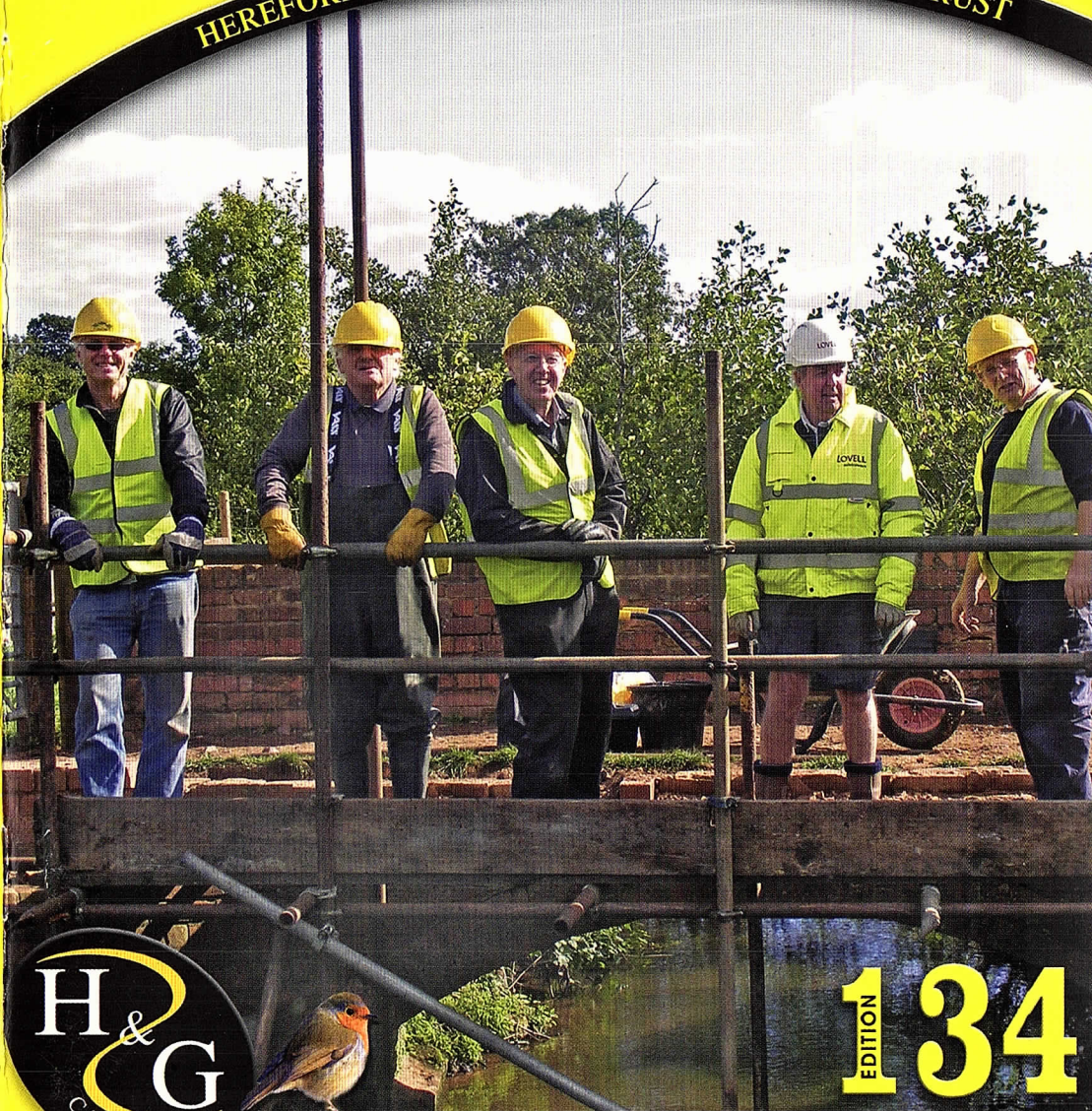


£1 free to members

Winter 2017– 2018

# The Wharfinger

HEREFORDSHIRE & GLOUCESTERSHIRE CANAL TRUST



134  
EDITION

REBUILDING A SUSTAINABLE CANAL BETWEEN HEREFORD & GLOUCESTER

Working together in the present to revive the past and secure a better future.®



## Who does what ...

To get in touch see "Contacts" inside the back cover.

### Vice Presidents:

*R. E. Barnes TD, Richard Graham MP, Mark Harper MP, Duff Hart-Davis, James Hervey-Bathurst CBE DL, Sir John Lushington Bt, Jesse Norman MP, Diana Organ, Tim Parker, Bill Wiggin MP*

### Board of Trustees

**Chairman:** Vaughan Welch

**Committee:** Nigel Jefferies, Caroline Jones, Maggie Jones, Cliff Penny, David Penny, John Pritchard

**Company Secretary:** *Dr Caroline Buffery,*

**Accounts Examiners:** *Griffiths Marshall, Gloucester*

**IWA Branch Liaison:** Maggie Jones

### Corporate Governance Working Group

*Nigel Johnson, Dr Caroline Buffery, Nigel Jefferies, Vaughan Welch*

### Health & Safety

*John Pritchard  
Hereford & Gloucester Construction  
Safety Association*

### Fundraising

*Caroline Jones, L&PDT*

### Restoration & Maintenance Teams

**Restoration Chairman:** *Wilf Jones*

**Hereford Roving Team:** *John Pritchard*

**Kymin East:** *Wilf Jones*

**Yarkhill:** *Chris High, Paul Hatt*

**Oxenhall:** *Brian Fox, Geoff Hopper*

**Moat Farm:** *Wilf Jones*

**Over and Vineyard Hill:** *Ted Beagles*

### Major Projects

**Malswick:** *Tony Sellwood, Paul Henshaw, John Pritchard, David Penny*

**Newent Station Project:** *Tony Sellwood, Mike Harris, David Penny, Wilf Jones, David Gregory*

### H&G Canal Sales & Promotion

**Hereford:** *Janet Moul, Barbara Moses, Ray Moses, Penny Shetliffe, Pat Skeet, Heather Worth*

**Gloucester:** *Margaret Holder, Maggie Jones, Pat March*

### Membership services

**Secretary:** *Nigel Jefferies,*

**Gift Aid:** *Janet Moul*

### Website Development

**Team Leader:** *Maggie Jones, Web Master: Nick Dymott, Committee: Ted Beagles*

**Digital Photo Archive:** *Colin Dymott*

# HEREFORDSHIRE & GLOUCESTERSHIRE CANAL TRUST

Working *together* in the present to revive  
the past and secure a better future.<sup>®</sup>

### Social Events

**Organiser:** *Janet Moul, Support: Nigel Jefferies, Stephen and Gillian Chowns*

### Press Liaison

*The Wharf House*

### The Wharfinger

**Editor:** *Maggie Jones*

**Consultant Editor:** *Cliff Penny*

**Design/Production:** *Maggie Jones*

**Proofreading:** *Becca Moul, Janet Moul*

**Advertising:** *The Wharf House*

**Distribution:** *Janet Moul, Barbara Moses*

**Volunteer Newsletter** *Hannah Davis*

### Talks and Walks

**Co-ordinator:** *Nigel Jefferies*

*Dick Skeet, Ted Beagles*

## THE WHARF HOUSE

OVER • GLOUCESTER • GL2 8DB

Telephone 01452 33 2 900 [www.thewharfhouse.co.uk](http://www.thewharfhouse.co.uk)

### Legal & Project Development Team

**Commercial & Technical Director:** *David Penny*

**Director:** *Eamonn McGurk*

**Legal:** *Nigel Johnson*

**L&P Development Officer:** *Dr Caroline Buffery*

**Legal Advice:** *Roz Rutter, Simon Freeman, No.5 Chambers*

**Business Development:** *David Penny*

**Planning Consultant:** *Green Planning Studio*

**Engineering:** *Thomas Ashworth, Tony Gee & Partners*

**Delivery co-ordination:** *Tony Sellwood, Wilf Jones*

**Accounts:** *The Practice Ledbury*

**Events and Customer Relations:** *Tessa Berry, Hannah Davis*

**Mill Barn Project:** *Tony Sellwood*

**Architects:** *Roberts Limbrick*

All profits from *The Wharf House* and *Malswick House* will be used for  
the promotion and restoration of the Hereford & Gloucester Canal.

page  
**18**

Great cakes  
at Oxenhall!



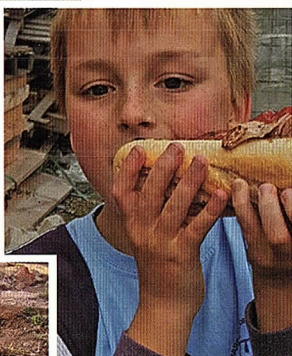
page  
**23**

Pat works on  
Renton



page  
**15**

Volunteer Scouts  
have the right  
idea!



page  
**13**

Mark lies  
down on the  
job!



page  
**20**

Wilf puts the new Grillo  
mower through its paces.

# Contents

page

- 3** Editorial: Working *together* in the present
- 4** A report from the Board of Trustees
- 6** News from L&PDT: Newent Station
- 9** New Director for The Wharf House Group
- 9** Fundraising: Land Fund
- 10** Projects in progress: Malswick
- 14** More Projects in progress: Over Basin
- 15** Youngest Volunteers!
- 16** Volunteer Focus
- 18** Newent & Oxenhall Open Day report
- 19** Social Evenings at The Royal Oak
- 20** Maintenance matters: Grillo, Oxenhall and Newent, Yarkhill
- 22** Maintenance matters: Dymock and Heritage Boats
- 24** The Glamorganshire Canal
- 25** Nature Watch
- 26** Gift ideas from The Wharf House
- 29** Staplow History Walk
- 31** Gloucester Model Boat Club
- 33** Sailing4Disabled
- 34** News from the National Waterways Museum Gloucester
- 35** Not quite the last page: Grand Holiday Draw 2017 Results, Postage stamps and List of advertisers.

Cover image:

Scaffolding training at Malswick. Alan McBride

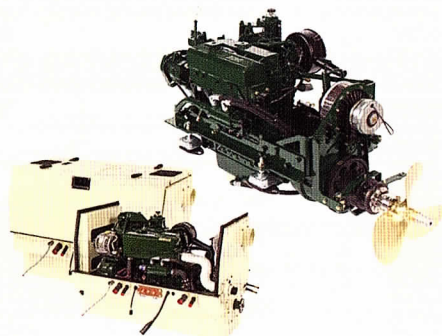
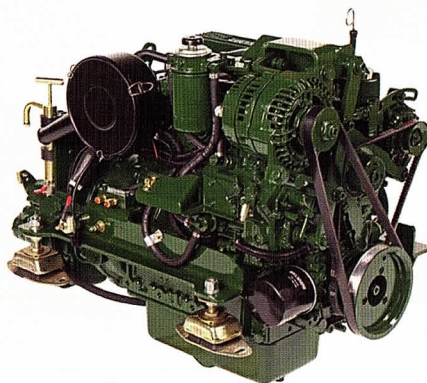


# Your needs . . .

# **BETA** MARINE

Seagoing   Saildrives   Inland Waterways   Marine Generating Sets   Spares & Support

- 30 years of customer centred focus, listening to needs & delivering long term value solutions.
- Specialists in customer advice & support at all points of a products voyage.
- Superb after-sales service via our network of approved engine installers and service centres.
- Extensive range of 14 to 115 HP keel cooled propulsion engines with mechanical or hydraulic gearboxes.



- Super silent acoustic housings, 3.5 or 5.0 kVA travel power, bow thrusters and hybrid propulsion options available.
- Keel cooled Generating Sets <50 kVA with or without super silent acoustic housings.
- 5 year self-service warranty.

## **. . . our tailored solutions** delivering reliability and peace of mind

# **BETA** MARINE

**www.betamarine.co.uk**

**Tel: +44 (0)1452 723492   Email: sales@betamarine.co.uk**





## ***Working together in the present***

Teamwork is the key to success in delivering a restored Canal, and this only happens thanks to the dedication and support of our increasing number teams of volunteers.

### **Malswick**

The work at our new Project at Malswick is going well thanks to the coming together of two teams of volunteers, one from Moat Farm and the other Oxenhall, who have made a good start on restoring the bridges over Ell Brook. *See the report on page 10.*

Behind the scenes a further team has come up with a very good design for the third access bridge over the brook. This team, headed up by Thomas Ashworth, from Tony Gee and Partners, and includes a collaboration of volunteers including David Penny, Paul Henshaw and Tony Sellwood.

### **New Articles of Association**

You will read on page 5 about the new Articles of Association that have been worked on by the Corporate Governance Working Group, to replace the outdated articles we have at present. Thank you to that team working together for the benefit of the H&GCT. CGWG is headed up by Nigel Johnson, former Head of Legal at CRT and who just completed the legal transition of the Royal Parks into the third sector.

### **Winter Bazaar**

By the time you read this Wharfinger the Winter Bazaar may well have passed, but the regular team headed up by Pat Skeet

has once again been working *together* to bring a wonderful array of crafts and produce to our successful annual event at Ledbury in late November.

### **The Wharfinger**

The team that writes, produces and delivers this magazine also relies on support from a wide number of volunteers.

For the past 26 years Cliff Penny has been the Editor of ***The Wharfinger***. That is quite record, and there has never been second best for Cliff, it has to be correct in every detail. He was able to grow the magazine as the H&GCT grows in restoration and support. It reaches a wide readership, not only our Members but also local authorities and other organisations.

For the past few editions Cliff has needed to take a back seat due to his health. He has now decided to step back and let the apprentice take over, who has only been involved in its production for 16 years, so quite a novice really. I will do my best to deliver it to as high a standard as possible with the help of the wide range of contributors, who make it all possible ... and Cliff? ... no, he has not *fully* retired, he has agreed to be my consultant when ever I need him. Thank you Cliff and thank you for all the many hours you have put into the production of this magazine over the years. We all wish you well!

**Thank you >>> MJ**



*We wish all of our Readers  
a Happy, Healthy Christmas  
and a Prosperous 2018*

## A report from the Board of Trustees

Members of H&GCT will be aware that a Corporate Governance Working Group was set up in July to review our Articles of Memorandum and Association.

The present Articles date from 1992 when the Society became a Trust, a registered Charity. Although there have been some minor changes to them over the years they never had a complete review. When they were first compiled H&GCT was a considerably smaller organisation.

With a membership of some 1400 and new technologies playing a key part of our lives they no longer work for today's charities.

We are very lucky in having Members with a wealth of knowledge of charity law, and the Board of Trustees are very grateful to the Corporate Governance Working Group for providing us with updated Articles to guide

H&GCT both at the reconvened AGM and into the future.

### Adopting the new Articles

Members of H&GCT have received an invite to attend general meetings in early December. We apologise to Members at the Hereford end, who on this occasion, will have further to travel to Highnam due to venue availability. We hope this will not stop you supporting these important meetings.

The Extraordinary General Meeting will be asked to adopt the new Articles. This first meeting will require an attendance of 140 Members, eligible to vote, in order for it to be quorate under the present Articles. If as we expect, this is not the case, the meeting will be adjourned to the following week on Monday 11th December and held at 6.30pm where it will become legal with a smaller quorum prior to the reconvened Annual General Meeting.

## Hundreds of Contractors... Just *one* number.

Canal contracting provide every aspect of boat maintenance, engine replacement or insurance work that you could possibly need.

We work with a national network of specialist contractors including:

- Marine engineers
- Plumbers
- Painters
- Glaziers
- Carpenters
- Heating engineers
- Electricians



We cover boat insurance work including:

- Rescues and boat salvage
- Boat recovery
- Window boarding up and replacement
- Hull repairs
- Gearbox and propulsion issues
- Groundings
- Dealing with fire and water ingress
- Full rewires and refits

CALL: **0845 4308021**  
FOR A NO OBLIGATION QUOTE

OR VISIT US **ONLINE** AT  
**[www.canalcontracting.co.uk](http://www.canalcontracting.co.uk)**



A PDF of the new H&GCT Articles can be downloaded from the H&GCT website: [www.h-g-canal.org.uk](http://www.h-g-canal.org.uk), or Members can request copies to be mailed by contacting the Company Secretary at the H&GCT's Registered Office and at the meeting.

### **Reconvened Annual General Meeting**

Members will have also received a Notice of this Meeting with the Agenda. Copies of the Statement of Financial Activities and Balance Sheet 2016-17 are available on the H&GCT website and at the AGM, or on request to [accounts@h-g-canal.org.uk](mailto:accounts@h-g-canal.org.uk) or by written request to the Company Secretary.

### **The Board of Trustees**

It is expected that the AGM will be conducted under the new Articles. Trustees are expected to fulfil a specific role on the Board in the general running and management of H&GCT. Six of the present Trustees are standing down at the reconvened AGM and will be standing for re-election under the provisions of the new Articles, if these are adopted at the preceding EGM. However, Cliff Penny, will be retiring at this point after serving as a Trustee for H&GCT some 27 years. We offer a huge vote of thanks to him and wish him well.

At present these Trustees carry out valuable voluntary roles within the H&GCT and offer themselves for re-election in order to continue their work. Present Trustees include Nigel Jefferies our long-serving Membership Secretary, Historian and a founding Subscriber of the Trust. Caroline Jones, who has recently re-joined the Board after a short break taking on fundraising, using her knowledge and experience as a professional fundraiser. Maggie Jones has served on the Board for the past eleven years. She has a number of roles within the Trust including production of *The Wharfinger*. She has now taken over as Editor, looks after other publicity materials and organises our sales events in Gloucestershire, including Over Festival. As our Commercial and Technical Director, David Penny is widely known throughout H&GCT as well as nationally

advising other waterways. He runs the Legal and Project Development Team, and manages The Wharf House companies and is also a Founding Subscriber of the Trust. John Pritchard, has been Trustee for two years and represents the Hereford sites as well as dealing with Health and Safety issues and good working practices. Vaughan Welch has recently joined the Board. He is a long-term supporter of H&GCT and advisor to a number of other Canal Trusts. His experience includes many years chairing the Restoration Committee of IWA and numerous roles within the waterways nationally, including currently a Council Member of Canal & River Trust. He has recently taken the Role of Chairman.

### **Electing New Trustees**

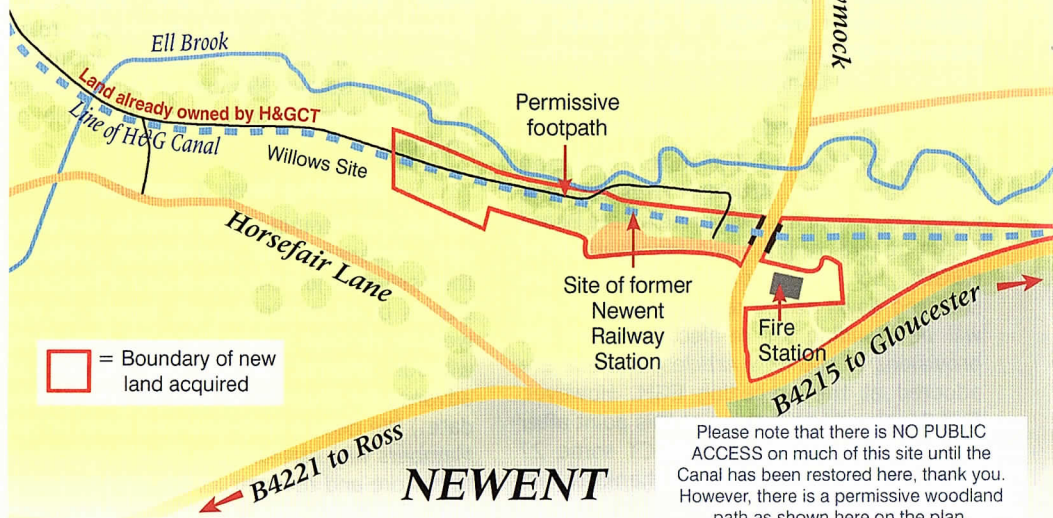
We ask our Membership to consider the skills and experience of candidates offering themselves to join the new Board of Trustees. Details of all candidates will appear on the website six days before the AGM. (Members without internet access can request in advance for these to be sent by post at this date.) We need a well-balanced team of ten Members who can fulfil the Trust's objectives to restore and reconstruct the Herefordshire and Gloucestershire Canal to good and navigable condition throughout. (See item 2 of the revised articles for a full description.) New Trustees will be given an induction to the work of the Trust including the role of Trustees and charity law and their personal liabilities in taking such a role.

The election will take place at the AGM by a simple show of hands should there be 10 or less candidates. If there are more than 10 candidates standing a poll will be required. Members unable to attend the AGM have been given the opportunity of a proxy vote. Details are in the letters sent out recently. Joint members will have two votes. However, this will require them filling out a separate proxy form for each Member. We hope you will support the Trust to build a well-balanced, harmonious team to *work together* in the present to revive the past and secure a better future.

***Thank you.***

## Newent Station

Newent Station and surrounding land was finally registered under H&GCT's name in September. Now the Trust officially owns the line of the canal from behind the Fire Station all the way up to Oxenhall Lock fundraising and design work can get underway for delivering this significant length.



As we have previously reported about five years ago, a sub-group identified target areas of land which formed the basis of the L&PDT work for the last five years. Newent and Malswick are two of these sites that have now come to fruition publicly as land we own and can drive forward.

The key objective is to deliver a 5 year land supply of volunteer work to ensure that there is a consistent workload for a brickwork and other teams so we can invest in the right equipment and build skilled delivery teams that can clearly see a programme of work ahead. You will see this is already happening with new concrete mixers; the Grillo; and shortly the Utility Vehicle to support and facilitate our teams delivering on the ground.

### What is involved in acquiring land?

Although the transfer for Newent Station was signed in May it did not go 'live' on the Land Registry system until last month. People often ask why these transactions take so long – and anybody who has bought or sold a house will have a small idea of how long it takes. Trust land transactions are generally many times more complicated, and one transaction may in fact involve several parcels of land and different deeds.

When the H&GCT wishes to purchase land, a proposal is outlined to the Board and L&PDT delegated to negotiate. Negotiations on price and boundaries may take months, or even years, until a 'heads of terms' is agreed by both parties. Council land also



has to be approved by the Cabinet before any paperwork is even exchanged – and this can sometimes take up to six months for approval after initial agreement has been reached. The land has to be ‘investigated’, and all available records relating to it are examined to check for anything onerous (such as a hidden clause or right of access) or in the case of Newent ensuring previous tenants left things we wanted but removed anything we did not. The transfer documents are drafted in-house within L&PDT – this will consist of official forms, individually tailored with clauses, sub clauses, terms and conditions, as well as scale maps and plans. These will again pass between seller and buyer (or their agents) to be tweaked’ until they are finally signed and sent to the Land Registry.

### A new Project Team

A new L&PDT Project Team has been formed which will bid for funding and take forward the design and paperwork. The

first Project Team Meeting will have taken place by the time you read this. The Team will include the volunteer Architect, David Gregory, Tony Sellwood, David Penny, Wilf Jones, Mike Harris, Caroline Jones, Thomas Ashworth of Tony Gee and our Archaeologists, Border Archeology. The work will proceed in three stages. Funding will be sought to begin rebuilding the old station platforms, designing and building the rebuilt station buildings and other railway features to be a new visitor centre tea rooms and crafts centre and other commercial buildings, and exploring options for the aqueduct, staircase of locks, and final canal route.

Our plan is to ensure we have a flow of work for the teams currently rebuilding the bridges at Malswick so that between the two Projects and other works in the general area there will be three to four years of brickwork related jobs to keep a growing and skilled team busy in delivering the Canal. >>> **CB**

## UP TO 70% OFF OUTLET SHOPPING

Quality restaurants, bars and a 10 screen cinema















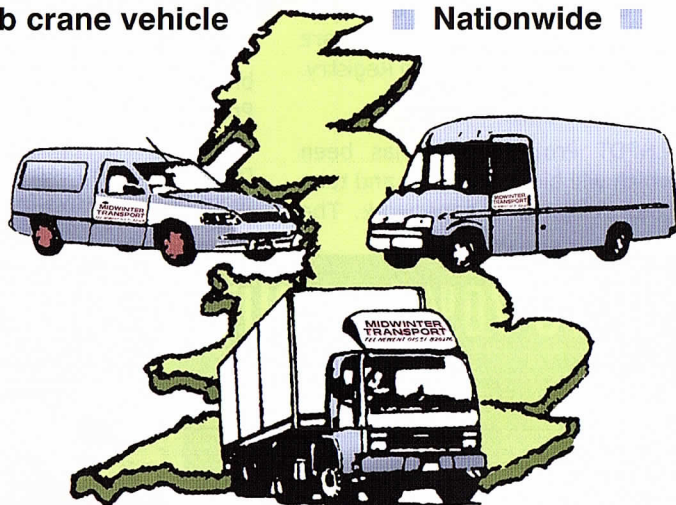
**Gloucester Quays**  
Experience More  
[gloucesterquays.co.uk](http://gloucesterquays.co.uk)

# MIDWINTER TRANSPORT

ESTABLISHED 30 YEARS

With a full range of vehicles including

- flat curtain sided and refrigerated ■
- from half tonne Escort to 38 tonne artic ■
- Hiab crane vehicle ■ Nationwide ■



## TOTALLY COMMITTED TO DELIVER

Newent 01531 820276

Fax: 01531 822247

Strawberry Hill, Newent, GL18 1LH

[www.midwintertransport.co.uk](http://www.midwintertransport.co.uk)

email: [midwintertransport@yahoo.co.uk](mailto:midwintertransport@yahoo.co.uk)





*New Director*

## THE WHARF HOUSE GROUP

We are pleased to announce that long term supporter of both the H&G Canal Trust and The Wharf House has joined The Wharf House Board of Directors.

**Eamonn McGurk** owns **Keyway**, who have repeatedly sponsored the Trust and delivered the Dymock site for us at no cost, as well as owning the more diverse McGurk Group is 24<sup>th</sup> of the top 100 leading businesses in Gloucestershire in 2017.

## fundraising

*more land = more restoration*

## H&GCT LAND FUND ... a good initial response!

We thank our members who came forward to support our appeal for the **LAND FUND** in last edition of *The Wharfinger*.

We have had an offer of a significant loan as well as very generous donations, thank you to all who have started the ball rolling.

However, we still have much further to go if we are to reach the two million target in order to secure the pieces of land on offer at present.

It is very important to build a succession of canal land that our teams can restore and eventually join up to make the Hereford and Gloucester a great waterway once more!

### Why are canals so important?

They are a great community asset for a wide range of people to enjoy.

They provide a natural corridor for a much wider range of fauna and flora.

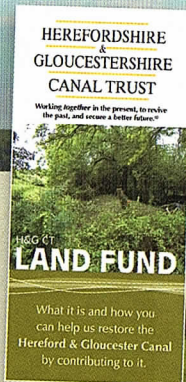
With your help we can deliver a local amenity that will also be good for the wider local economy in terms of jobs and opportunities.

We know that most of our readers already understand the importance of this restoration but we are asking your help to deliver it please.

**£2 million  
required**

The **LAND FUND** will provide the means to obtain crucial sites along the line of the Canal where there is no new development proposed or where we cannot acquire the line of the canal by other opportunities. It is a vital fund to help us eventually restore the full length from Gloucester to Hereford.

[www.h-g-canal.org.uk](http://www.h-g-canal.org.uk) then click 'About the Trust' then click 'Land Fund'





# projects in progress ...



Jason with volunteers from East/West bridge teams

*Below:* The completed platform.



*Paul Henshaw writes:*

## Malswick

As we indicated in the last edition of *The Wharfinger*, we have been concentrating on carrying out repairs to the two brick bridges which cross Ell Brook.

On the East bridge, Geoff and the team from Oxenhall have been clearing the vegetation from the banks either side of the bridge and from the brook itself. An old sycamore tree stump has been cut back to the face of the bank, so that it will not impede the future flow of water along the brook.

Old gate posts at the end of each parapet have been dug out and new posts have been concreted in to replace them.

Meanwhile on the West bridge, Robert and the team from Moat Farm have similarly concreted in four gate posts which will be used to buttress each parapet and help protect the brickwork from future accidental damage.





Scaffold training in progress.

Alan McBride

# **E.B. HAYWARD & Co. LTD** *Sheet Metal Work, Welding & Fabrications*

We are a family run business established over 50 years ago, specialising in sheet metal work and fabrications in most metals including mild steel, stainless steel, aluminium, titanium, copper and brass.



- Items can be manufactured to your own drawings or from instructions.
- Quantities from 1 to 10,000.
- Sizes can range from a washer right up to fabrication of 1 tonne.

We have a wide client base with particular involvement in hydraulic press, concrete, materials handling, feed and flour milling industries.

It has been our pleasure in supporting the Herefordshire and Gloucestershire Canal Trust for over 20 years, and we will continue *to work together in the present, to revive the past, and secure a better future.* © H&GCT

**Simon Hayward: 01452 700384, Fax 01452 700740**  
**SHEET METAL WORKS, ASHLEWORTH, GLOUCESTER, GL19 4JJ**

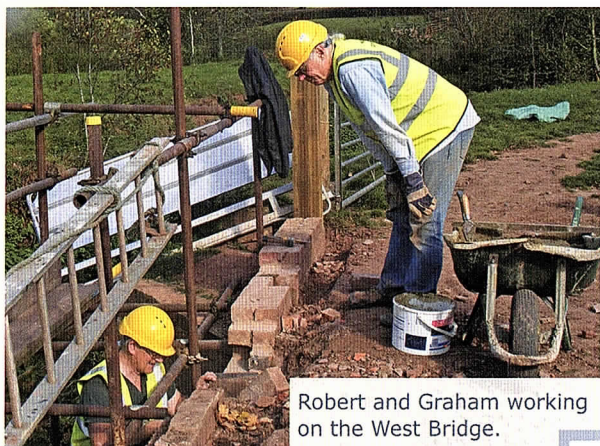


Work has concentrated on repairing and in some cases rebuilding the wing walls on the upstream side of the bridge. Some areas of brickwork had deteriorated so badly that they had to be "kangoed" out and replaced with new.

### Scaffolding training

At the beginning of October, a local building company offered the services of one of their professional scaffolders to erect scaffolding at both bridges free of charge to the Trust and to train our volunteers. Our thanks go to **Jason Kavanagh** from **K W Bell** for their help and support. It is very much appreciated.

With the scaffolding in place we will be able to proceed carefully with the complete dismantling of the parapets down to the top of the arches and start rebuilding.



Robert and Graham working on the West Bridge.



Oxenhall team working on the East Bridge.

### All in the preparation

One of the challenges of the project is that the two bridges are some considerable distance from Okle Clifford Farm and are located on the flood plain. We have spent the last few weeks laying down building materials on site while the ground conditions are favourable. This is to ensure that we have everything in place before the weather turns.

In the background, a lot of effort has been going into the design of the new bridge. We are very fortunate to have the help and support of **Thomas Ashworth of Tony Gee & Partners** during this process and our thanks go to them.

We greatly appreciate the ongoing support of landowners **Gloucester Charities Trust** and tenants, **Hartpury College**, as we all work together to deliver this Project for the benefit of the community, thank you.

*Please note that the site will not be open to the general public until the canal has been formally completed. >>>PH*

*We are  
looking for  
volunteer*



**BRICKLAYERS**

We are looking for people with bricklaying skills. If you feel you would like to help please contact Paul Henshaw on **01684 293930**.





Above: A little light traffic crossing the West Bridge.

Left: Mark clearing out damaged brickwork on the East Bridge.



*We are also looking for ...*  
a **4 wheel drive Utility Vehicle/mule**. If you hear of one being available please get in contact, Paul Henshaw on **01684 293930**.



Ralph cleaning bricks under the watchful gaze of some onlookers.



# more projects *in progress ...*

*Ted Beagles writes:*

## Over Basin

### The Great Wall

We have now completed the backfilling behind the short section of the wall, and Bob and Ivor have finished the brickwork. They are now beginning to construct a former for the brick arched roof.



*Above:* The completed wall with the backfill, ready for the arched roof of the cycle cave.

*Left:* A pile of bricks sorted for the work at Malswick.

*Below:* The beautiful shape of specimen lime tree.



### Bricks for Malswick

After much sorting out of the bricks stored on site for use in the Great Wall, we are now continuing to sort out several thousand more for use in the bridge repair work on the Malswick site.

### Specimen Lime Tree

If you have been to Over recently you may have noticed that some of the Alder trees near the site entrance have been felled. This has been done to allow the specimen lime tree sufficient space to grow unhindered. >>> **TB**







John Pritchard

Every site should have one of these!

## Youngest volunteers!

by John Pritchard

On Saturday 7 October, the 10th Hereford (Whitecross) Scout Troop arrived at Burcott Rd armed with secateurs and loppers.

They tackled the task of clearing brambles with enthusiasm and some unusual techniques! (My favourite was the lying on the ground technique). The boys and girls remained focussed on the task with the promise of a breakfast baguette at about ten o'clock, keeping them motivated. At eleven o'clock some were beginning to flag but the breakfast baguettes were ready and the scouts were drawn to the paella pan. Suitably refreshed they finished clearing the embankment and piled most of the debris into the trailer. I must confess that I was a bit nervous about having the scouts on site but they did a great job. Many thanks to Lee, Matt and Lewis for their help and of course the thirty breakfast baguettes! Finally a great big thank you to the 25 scouts who were a credit to their troop.

»» JP



Top: Scouts in action

Above: Small scout, large baguette



# GEOFFREY URCH GARDEN SERVICES



LANDSCAPING  
GROUNDS MAINTENANCE  
TREE SURGERY FENCING

CONTACT 07950 136074/01531 805040  
[INFO@GEOFFREYURCHCONTRACTS.CO.UK](mailto:INFO@GEOFFREYURCHCONTRACTS.CO.UK)  
[WWW.GEOFFREYURCHCONTRACTS.CO.UK](http://WWW.GEOFFREYURCHCONTRACTS.CO.UK)





## volunteer focus ...



Robert cutting brickwork down to the arch.



Robert Heigham is a regular volunteer on several of our sites and is currently leading a team restoring one of the two bridges over Ell Brook at Malswick. He is a very practical man who will turn his hand to a variety of tasks. He is experienced in bricklaying and has recently completed a chainsaw licence for H&GCT.

*Robert, how long have you been volunteering with the H&G CT?*

I have been volunteering for three years now, so I am really a newcomer.

*What attracts you to the waterways?*

For me, it is the amenity value. I am a Parish Councillor in Rudford and it would be a great asset to have the canal reinstated.

*What was/is your work before before volunteering for H&GCT?*

My early career was in farming, finishing as Farm Manager for Hartpury College in 1990. We moved to Rudford and started in the building trade with my new neighbour. We worked for companies doing the maintenance for Glos. County Council on schools, care homes and police houses for instance. When that ended we moved into private work which I still do today as semi-retired.

*What drew you to volunteering with the H&GCT?*

As I was nearing retirement age, I wanted another outdoor activity connected to our local area. I spoke to Martyn and Wilf, who said come along.

*What do you enjoy about working with the teams at Malswick?*

Everyone gets on really well with the aim of getting the job done in a constructive, professional way.

*Tell us about some of the main duties you carry out as a volunteer?*

The canal is my most recent area of volunteering. I have been heavily involved with the Tibberton Show and the village hall at Rudford for the last 25 years. As with most H&GCT volunteers, I have done a lot of mowing and strimming at Kymin, Dymock and Moat Farm. At Llanthony I helped with erecting steel and panel fencing. That is why it is good to have a more varied and useful project at Malswick.

*Tell us more about your current work at Malswick?*

My current work is at the new Malswick site where I am involved with rebuilding the parapets and wing walls on one of the two brick bridges over the Ell Brook as part of the first phase. Phase two will be what we have been really waiting for sometime: bringing the canal in the public eye to gain momentum for the project.

*What would you say to someone considering volunteering with us?*

**"Come and join us"**. The people on the ground are a very friendly bunch. Its amazing how much tea we can drink on a wet Tuesday while putting the world to rights. Our team could sort "Brexit" out!

*What is your proudest volunteer moment?*

I don't think I have had a light bulb moment yet. In the future it might be having been part of the effort to get the canal to Newent.

*What else would you like to add?*

Let's use the momentum created by Malswick to show the public that we are serious in reinstating the canal and I hope that I will see some more in my lifetime! >>> RH





# Everything Canal Boats

*Services from 10 marinas in the UK and  
boating holidays from 16 locations.*

- Boating Holidays
- Boat Sales
- Day Boat Hire
- Boat Builders
- Chandlery & Repairs
- Marina Services
- Moorings
- Canalside Holiday Cottages



The Inland  
Waterways  
Association



Scan Me

[www.everythingcanalboats.com](http://www.everythingcanalboats.com)

Call Us: 0330 333 0595





Oxenhall Village Hall was the hub for teas and cakes. Above: Penny Ward and Shirley Fox take a breather from serving refreshments.

## Newent & Oxenhall **OPEN DAY** by Brian Fox

The Open Day was a great success with a steady stream of visitors all day and plenty of tea and cakes dispensed. The weather stayed fine and several new members were enrolled.

Another volunteer has joined us making a total of 12 on this site, if everyone turns up. Nearly £1,000 was raised on the day. A big thank you to all those who helped in any way.

»»» BF

## MALSWICK HOUSE

TRADITIONAL INN • FOOD • FUNCTIONS

### *Festive Celebrations*

3 COURSE SET MENU  
£19.50 per head

2 COURSE SET MENU  
£17.50 per head

**01531 822 634**

[www.malswickhouse.co.uk](http://www.malswickhouse.co.uk)

B4215, Newent, GL18 1HE

[enquiries@malswickhouse.co.uk](mailto:enquiries@malswickhouse.co.uk)

Please note: Malswick House is closed from 25<sup>th</sup> December and reopening Wednesday, 3<sup>rd</sup> January

All profits from Malswick House will be used for the promotion and restoration of the Hereford & Gloucester Canal.



# Social Evenings

*at The Royal Oak*

The third Tuesday of every month (except December)  
at **The Royal Oak**, Much Marcle, HR8 2ND  
7.30 for 8pm start.



Please support our monthly meetings, make a note on the calendar and tell your friends and neighbours. We have an excellent venue and interesting speakers on a wide range of topics. Why not share transport and make an evening of it – **everyone is welcome!**

16 January

## **Thomas Telford**

– Nigel Jefferies

Civil engineer, architect and a “Man of Iron”.



20 February

## **Rout on the Riviera –**

the Slapton Sands Disaster

– Paul Barnett

The tragic events of April 1944 and one man’s determination to recover a sunken tank.



20 March

## **Boaters’ Craft Group**

– from the Gloucester Waterways Museum

Telling the story and lives of the narrow boat women and demonstrating some of their crafts.

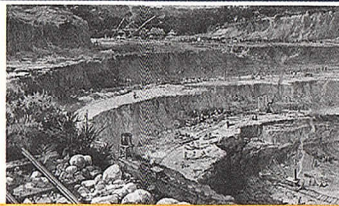


17 April

## **The Creation of the Panama Canal**

– Alistair Patrick

We hear about a slightly larger canal than usual!





# maintenance *matters...*



Ted Beagles

Wilf puts the new mower through its paces.

We say a big thank you to all the dedicated teams doing regular maintenance on every site along the Canal. This is the time of year to prepare the Canal site for winter. Undergrowth clearance and the final grass cutting has been made much easier on some sites with the delivery of the much needed new ride on mower.

*Ted Beagles writes:*

## **Grillo ride on mower**

19 September 2017 is a day to remember. This was the day when a shiny new Grillo Climber ride on mower, model 7.18, was delivered to Wilf Jones at the Trust's Moat Farm site. The supplier provided initial training to Wilf, who has the responsibility for overseeing the operation and maintenance of the machine.

The following week it went to Oxenhall to work in earnest, as this site provided plenty of grass to be cut, and a variety of



A purpose built trailer is under construction.

surfaces to put it through its paces. Under the guidance of Wilf, a small group of volunteers were initially trained to operate it, and to roll out a training program for future use. Following a cautious start by the drivers, it was operated for several hours cutting grass before being returned to its secure storage. A most satisfying day's grass mowing. A purpose built trailer is under construction, by our trusty blacksmith volunteers at Much Marcle, to allow the machine to be readily transported to any of the Trust's sites.

»» TB



## Oxenhall and Newent

*Brian Fox reports:*

Our efforts at grass cutting have at last been helped by the arrival of a new ride on mower. A day was spent on training those who will operate the machine and giving a good cut to the towpath at Oxenhall and much of the Willows site.

With several volunteers going to Malswick to repair a bridge over the Ell Brook, the rest of the team at Oxenhall are occupied in general maintenance and clearance work along the one mile length which we now own at Oxenhall/Newent (see report on page 6).

Autumn is now upon us and our thoughts once again turn to general maintenance and some clearance of the land recently acquired. Trees which have fallen during the summer are being cleared and tidied. Hawthorn trees do not survive long if they are not trimmed or laid over to form a hedge and several have blown down over the years leaving large gaps which we will now be filling by planting trees along the hedge line this winter. One particularly tall hawthorn fell this summer and destroyed a length of fence in the neighbouring field. This has now been removed and cut up for logs and the fence reinstated.

### Water supply

There is currently a problem with the water supply to the canal. Normally there is a constant flow of water coming down the canal from Oxenhall tunnel but over the last dry summer there has been less water than normal and the water supply has diminished to a trickle. It no longer flows over the

spillweir by the cottage as the meagre amount of water just leaks through the stop planks. These leaks have now been plugged and it is hoped that over the next few weeks this will allow the level in the pound above the lock to rise enough to flow once more over the spillweir. *A good deluge of winter rain would also help!*  
>>> BF

## Yarkhill

*Chris High reports:*

The continuing fine warm weather has meant that the team has carried on its work of vegetation control spending considerable time cutting back encroaching growth on the wild side. The cutting back revealed much animal burrowing activity so considerable earth shifting and hole filling has been undertaken.

Our last visit acknowledged the end of season with a burn up and tidy of the fire site area. Plans have been made for a machine cut of the canal banks and bed vegetation. We are now hoping that any major rain holds off for just a few more days so that this can be completed successfully.

>>> CH





## Dymock

*Wilf Jones reports:*

The last Saturday of October saw a team of volunteers descend on Dymock Pool to give it a good tidy before winter.

The banks of the pool were strimmed, as were the weeds around the trees on the bank edges. The gravel footpath in front of the houses had the weeds removed.

In a few weeks a small number of trees that have died will be replaced with new trees.

We have been informed by one of the local residents that the male swan which has taken up residing in the pool, was first ringed at Bewdley in 2013. The swan along with mallards, Canada geese, swift, swallows, dragonflies show that the pool is developing into a pleasant nature area.

Now we have resolved the problems with the bore hole pump the pool is filling and the site now looks very picturesque.

### Future plans

We will continue to maintain the towpath areas as the site continues to mature, and in 2018 we will return the daffodils, that were removed from the field prior to the commencement of the building works, and plant them on the edge of the towpath.

»» WJ



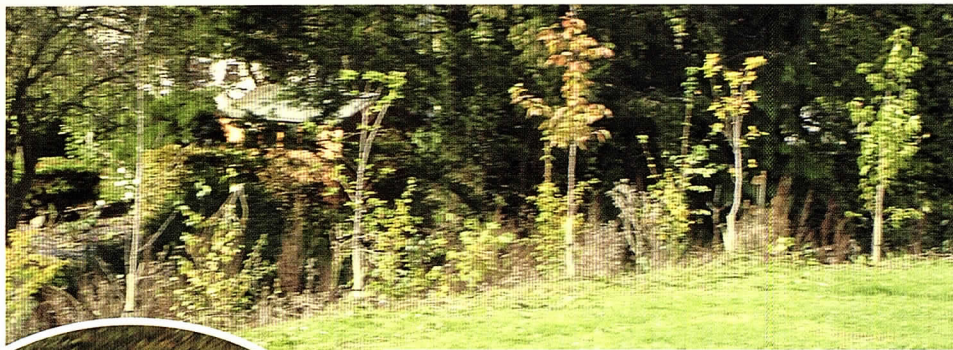
Top: the paths being weeded.

Above: Weeding completed.

Right: A male swan has joined all the other wildlife at Dymock Pool.







Some of the young saplings flourishing around the Pool.



The banks of the pool being strimmed.



Will Jones

With the pump issues resolved, Dymock Pool is now quite full.

## Heritage boats

*Ted Beagles reports:*

**Renton's** engine seems to be running OK at the moment, after temporarily re-plumbing the fuel supply pipework. Fingers crossed that when this is made permanent all will be fine.

Meanwhile on top of the cabin Pat has been working hard to sand down and repaint the roof during a brief lull in the rainy weather we seem to have experienced in recent weeks.

Over on **Bosley**, Dave and Mike are at work re-cladding the inside of the cabin, and have also replaced the front window glass after it was broken by vandalism overnight during the festival weekend.

**Alder** continues to run uneventfully each week, ensuring the navigation channel through the landslip section of Vineyard Hill, which seems to be stable at the moment, although the bullrushes in the shallow water have been growing and spreading at a great rate this year.

»» TB

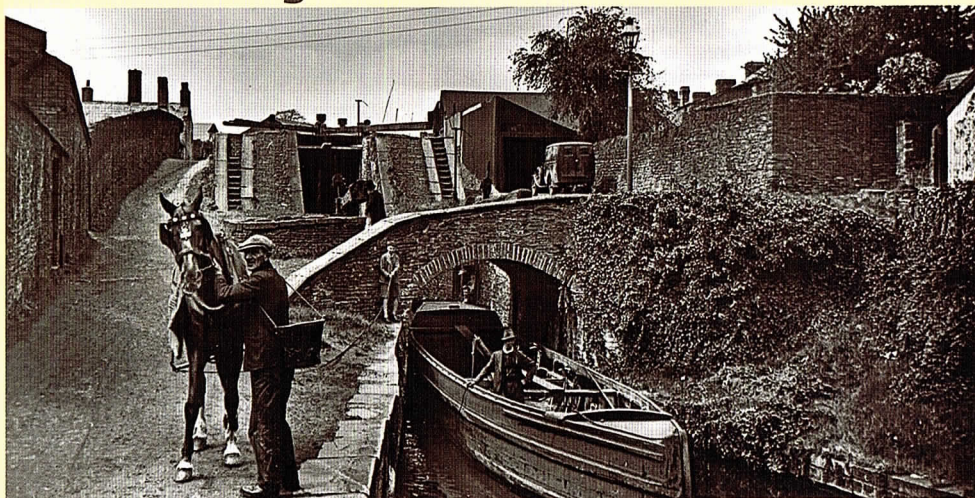


Pat repainting Renton's roof.



# The Glamorganshire Canal

Report by Nigel Jefferies



For the Trust's October social, Stephen Rowson travelled from Cardiff to provide a talk about what Charles Hadfield refers to as "the first major canal in Wales", namely the Glamorganshire Canal, which at one time was claimed to be the most financially successful canal in Britain.

Stephen's talk was profusely illustrated with evocative photographs of the canal. The Dadfords (senior and junior) assisted by Thomas Sheasby surveyed and constructed the canal. Dadford senior was a Midlander and at this time both he and his son were living at "Redland in the county of Gloucester" and each took £500 worth of shares in the venture. The purpose of the canal which ran from Merthyr Tydfil to Cardiff, was to carry raw materials, iron ore, coal (for conversion into coke) and limestone, to the four major iron manufactories of Cyfarthfa, Dowlais, Penydarren and Plymouth and distribute their products. The principal promoter was Richard Crawshay of Cyfarthfa. Work began in 1790 and the 24½ mile long canal was opened in 1794. Shortly after, it was

extended by about half a mile and a basin and a sea lock were constructed. In common with other south Wales canals it descended a river valley (in this case the River Taff) and was heavily locked, having 50! Many of the locks, built for barges 60' x 8'9", were constructed in pairs as a staircase, but in one instance a staircase of three.

In 1830 the Penydarren Company manufactured the rails for the Liverpool and Manchester Railway. The construction of the railways in the locality which began in the 1840s cast a shadow before them, indeed one of Stephen's later photographs showing the canal also illustrated five railways! 1858 was the most profitable year for the Glamorganshire Canal, when 466,983 tons of coal was carried. In the 1870s iron production began to move elsewhere and in 1885 the canal was sold to the Marquis of Bute who intended converting it to a railway, but was prevented from doing so. During the closing years of the 19th century, subsidence caused by the large number of coal mines sunk in the valley impacted on the canal. In 1915 a major breach occurred at Cilfynfdd and the canal was not





## nature watch by Alan McBride

The east end of the new Malswick site is mostly woodland. It has been studied by various groups interested in maintaining wildlife diversity in the area.

One of the groups has put up a variety of bird boxes; the one shown in the photograph is a Barn Owl box. The large amount of twigs associated with the entrance to the box leads us to believe that it is now being used by Jackdaws. This has been a common problem when trying to provide nesting sites for Barn Owls. It is something that we will monitor more closely, perhaps we will consider altering the design of the boxes so that they are less Jackdaw friendly but still attractive to Barn Owls.

»» AM<sup>c</sup>



Owl box discovered in centre of woodland area at Malswick.



This fantastic photograph of dragonflies was the reward of forty minutes of Anna Boulton's patience at a Sailing4Disabled event at Over Basin.

reconstructed, although a wooden trough was built across the breach to maintain the flow of water. In 1942 another breach occurred and carrying came to an end. Cardiff Corporation gained control in January 1944 and declared it closed. In the 1960s a large section was in-filled by the Cardiff Bay Development Company and in the 1970s the A470 trunk road was built over about half the canal. However traces of the former canal can still be found in

Pontypridd and one stretch is now a nature reserve.

Stephen Rowson in association with Ian Wright has produced a two volume history of the Glamorganshire Canal.

"The Canals of South Wales and the Border" by Charles Hadfield, pub 1960 by David & Charles, also includes a section about the Herefordshire and Gloucestershire Canal Navigation.

"The Glamorganshire and Aberdare Canals" by Stephen Rowson & Ian Wright, ISBN 0 9533028 9 X pub. by Black Dwarf Publications.





## Gift ideas from <sup>THE</sup> WHARF HOUSE

### Gift Vouchers for the Restaurant

Why not surprise your loved ones this year with a gift voucher for use at <sup>THE</sup> WHARF HOUSE offering the chance to sample sumptuous local food, created with flair and imagination. Vouchers can be purchased in denominations of **£20**, available by post with a gift card included for value of vouchers + £2.95.



### Gift Voucher for Afternoon Tea

By popular demand there is now a gift voucher for Afternoon Teas at <sup>THE</sup> WHARF HOUSE. The teas include a pyramid of sandwiches, scones, cakes and desserts as well as a choice of beverage.

Vouchers are **£17.50** per person. They can be purchased either at <sup>THE</sup> WHARF HOUSE, or available by post with a gift card included for value of vouchers + £2.95.

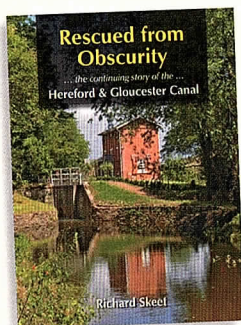


### Rescued from Obscurity

The story of the H&G Canal written by former Chairman, Dick Skeet and published by the H&G CT makes an excellent gift.

**£10** £12 by post

*"a thoroughly competent and enjoyable book ... informative text, a good selection of photographs and clear, concise, maps"*  
Waterways World



### H&GCT Membership Welcome Packs

A great gift for the historian, walker, boater or environmentalist in your life! If you are still struggling to find that elusive Christmas gift why not give a H&G CT Gift Membership – a gift that lasts all year – it will outlive those flowers or box of chocolates!

The membership pack includes four recent Wharfingers, information leaflets, a car sticker and H&GCT pencil.

Available to callers at <sup>THE</sup> WHARF HOUSE or just send your and the recipient's details, together with the relevant membership rate for the gift to the H&G Canal Sales and Promotion mail order address (*inside back cover*). Please include your 'phone number in case of any queries. Details of your gift will be sent inside a FREE H&G Christmas card at no extra cost to you and over the next 12 months the recipient will receive a further four future editions of The Wharfinger.

From **£7.50** (for rates see *inside back cover*), plus £3 P+P.

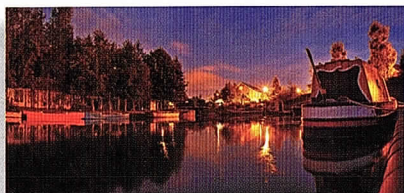


### Gift Membership Plus!

Add another **£10** to the subscription cost (or £12 by post) to include a copy of the highly acclaimed

**Rescued from Obscurity.**





## Christmas Cards

Christmas Card of **THE WHARF HOUSE** and Over Basin at dusk. The design is printed on quality card, and comes singly or in packs of 5 with self-sealing envelopes. Size: 210mm x 99 mm.

**£1** each or **£3.99** for a pack of 5 cards with envelopes, plus £2.95 P+P for minimum of 4 packs of 5.



Do you know you can just pop  
in to **THE WHARF HOUSE** for  
a coffee or a drink?

Perhaps a mid-morning teacake  
or afternoon scone, or a panini  
at lunchtime?

## Winter Opening times at **THE WHARF HOUSE**

**Tuesday to Saturday:** lunch and evenings  
for À la Carte or Tasting Menu  
*[booking very strongly recommended].*

**Monday to Sunday:** lunchtimes  
Terrace Menu and Afternoon Tea.

Over **Christmas** and the **New Year** we  
are closed from Sunday, 24 December  
to Thursday, 11 January

It is always advisable to book as we can get  
very busy. We only accept a certain number  
of tables at any time in the diary, so do not be  
offended if you are turned away even if we do  
not look full! The restaurant is available to be  
booked for private functions 7 days a week.



**Christmas Menus**  
[www.thewharfhouse.co.uk](http://www.thewharfhouse.co.uk)

**THE WHARF HOUSE**  
AWARD-WINNING WATERSIDE RESTAURANT WITH ROOMS

**01452 332 900**  
[www.thewharfhouse.co.uk](http://www.thewharfhouse.co.uk)  
Over, Gloucester, GL2 8DB  
[enquiries@thewharfhouse.co.uk](mailto:enquiries@thewharfhouse.co.uk)

AA Gold Award ★★★★★  
AA Award of Excellence  
Green Tourism Gold Award

Turn off the A40 at traffic lights 250 yds west of Over Roundabout (junction A40/A417). GR SO 816197

All profits from The Wharf House will be used for the promotion and restoration of the Hereford & Gloucester Canal.



# PRINT PLUS

## 01432 272025



126 Widemarsh Street • Hereford HR4 9HN  
Fax: 01432 353962 • Email: [enquiries@printplushereford.co.uk](mailto:enquiries@printplushereford.co.uk)  
[www.printplushereford.co.uk](http://www.printplushereford.co.uk)



always delivering quality



## THE OAK INN Staplow HR8 1NP 01531 640954



A VERY WARM WELCOME AWAITS YOU AT OUR NEWLY REFURBISHED INN  
OPEN FOR LUNCH & DINNER EVERY DAY IN OUR COSY BAR AREAS OR RESTAURANT  
GOOD SELECTION OF REAL ALES - GOOD BEER GUIDE 2009 & 2010

REAL LOG FIRES, FLAGSTONE FLOORS, OLD BEAMS & HOPS  
PRETTY BEER GARDEN ~ PARTIES CATERED FOR ~ DOG FRIENDLY  
THE ONLY PUB IN HEREFORDSHIRE THAT ABUTS THE LINE OF  
THE HEREFORD AND GLOUCESTER CANAL

FOUR EN-SUITE B&B ROOMS NOW AVAILABLE  
[www.oakinnstaplow.co.uk](http://www.oakinnstaplow.co.uk)





# Staplow History Walk ...

A group from the Friends of the Leominster Canal recently joined Nigel Jefferies for one of our Canal Walks at Staplow. Here is their response to the visit.

Just a quick thank you to those who came on the Hereford & Gloucester canal walk, there was around 15 of us and we had an excellent morning led by Nigel Jefferies, from the H&GCT, who was ably assisted by our own, Jim Dunn. A huge thanks to the both of them for looking after us and also to the Oak Inn for letting us use their car park. By the way I can recommend the food, it was very nice and they coped very well with the 12 or so that stayed for lunch.



Some of the group on their walk.

On the scenic three mile circular route we saw a number of canal buildings including Staplow Wharf. Much to the immense pleasure of one of our group, Martin, there were culverts too, and many other recognisable parts of the original Canal.

It was a certainly a very interesting morning and we may look to visiting other canals sites in the future.

*Thank you*



Staplow Wharf then and now!



## Canal Walks

H&G Canal Trust has produced a series of walk leaflets which explore various parts of the Hereford & Gloucester Canal.

**STAPLOW, WITHINGTON WHARF,  
DYMCK, LLANTHONY LOCK,  
OXENHALL and OVER BASIN**

30p per walk leaflet (Over Basin 40p)

*All proceeds towards the promotion and restoration of the Hereford & Gloucester Canal. available via the website and The Wharf House.*



# KEYWAY



NATIONWIDE PLANT RENTAL

Over 50 years experience  
Quick response time  
Extensive fleet of latest equipment



With more than £7m invested annually and a fleet of 1000, Keyway offers the most comprehensive range of equipment and support services for our customers and operators.



**Welcome to the Keyway Group** – *Extensive range of equipment, personal customer care*



Keyway provides a complete recycling and waste management service to the construction and demolition industry operating a fleet of specialist vehicles within the south west region.

We seek to provide value for money and improved environmental solutions for all our customer needs. [www.keyway.co.uk](http://www.keyway.co.uk)



UK CONSTRUCTION RECRUITMENT is a leading employment agency specialising in the supply of temporary construction staff for the built environment. [www.ukcr.co.uk](http://www.ukcr.co.uk)

## NATIONWIDE STONE SUPPLIES



NATIONWIDE STONE SUPPLIES specialises in providing all of your aggregate solutions no matter the size and scale of your project. [www.nationwidestonesupplies.co.uk](http://www.nationwidestonesupplies.co.uk)

For further information please contact us on  
T: 0845 241 81 81 | E: [plant@keyway.co.uk](mailto:plant@keyway.co.uk) | [www.keyway.co.uk](http://www.keyway.co.uk)





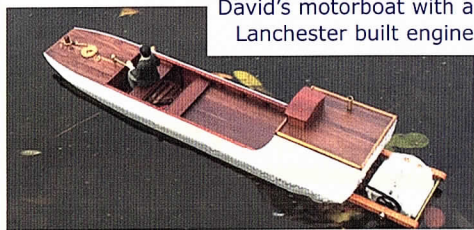
## Gloucester & District Model Boat Club

David Excell

There is now a bit of nip in the air as autumn arrives, not a bad summer and we have been able to sail our model boats down to the winding hole most of the time, as I normally use a paddler weed is not such a serious problem for me.

We have had two busy weekends on the Canal, firstly the Over Festival weekend where we put as many boats onto the water as we could to keep the general public entertained, which I am sure that we did! We created a lot of interest in model boats in general and hopefully signed up new members who sadly prior to this did not realise that such a facility existed. It would be nice to see on such a weekend more organisations such as the local Scouts and Guides displaying their activities, good for them and more to entertain the public.

We left our gazebo up after the weekend, thus enabling John Hamer to do a splendid job of painting the picnic tables with preservative. It will help them last and they look good too. The following weekend, on the Sunday, we held our Fun Day with complicated manoeuvring competitions for the motor boats and knock out races for the sailors plus a splendid lunch organised by the ladies.



David's motorboat with a Lanchester built engine

David Excell

One Sunday I sailed on another part of the restored Canal. Chris Clark, the Lanchester car historian and H&GCT member, had invited people from Coventry University to visit



The Model Boater's stand at Over Festival.

Dymock and during their visit he took them to see the Dymock Canal Basin. While there I showed them my model of the first ever British motorboat with a British engine which was built by the Lanchester Bros (prior to forming the Lanchester Motor Co. Ltd.) to test their new engine which due to the 'Red Flag' act they could not test on the road. Dymock Basin would make a splendid boating pool and I hope it doesn't weed over.

### BBC Radio Gloucestershire

We were interviewed by Pete Wilson for his Sunday morning radio programme about sailing model boats on the canal which should bring both our Clubs to a wider audience.

We carried out another heavy weeding operation in September and the Canal Basin is in pretty good condition. "Winter is coming" as they say in *Game of Thrones* but we will endeavour to keep using the Canal during the winter months. **>>> DE**

### Gloucester & District Model Boat Club

Sails at Over basin on Wednesday, Friday and Sunday afternoons (weather permitting). You should find somebody sailing between 1.00pm and 4.00pm. The Club members will be pleased to talk to you about their models and the Club. Members have models of all descriptions including amphibious craft. Yachts are very popular.

*Chairman. Edward Tedaldi.*





# MOAT CONTRACTING

GROUNDWORK SPECIALISTS



*Large enough to deliver. Small enough to care.*

**07887 544 400**

**moatcontracting@aol.co.uk**





The wheelyboat was much in demand at the Tall Ships Festival.

Well, a lot has happened since the last update! Firstly, the Tall Ships Event;

many thanks to the Andy Beasley of Wheelyboat Trust for trusting us with a brand new 96 hp 20ft V20 (larger than ours and GRP) this enabled us to take 10 adults per trip around the ships in the docks, and be as wet as the water in the docks! Sack the person who ordered the rain, but after one and a half days out of the three we had taken a hundred passengers, and as a bonus, our helpers recieved a one way trip to Saul Junction so that the boat could be returned to the Wheelyboat Trust. Thanks to Adrian for the free towing to Swindon for the change over.



The Belarussian children once again had a great day, only one life jacket was inflated, an innocent mishap as the person entered the water and the arming device just touched the water and inflated! Well at least it worked!

Over Festival saw us in "Pirate" costumes and doing our bit for the better of the H&GCT. Once again, we took visitors sight seeing and a light hearted commentary by me.



Pirates have fun at Over Festival.

When we first came to Over Basin, David Penny did say it would be nice to see sailing boats on the water. Unfortunately the safest sailing boats had too long a dagger board, and stuck in the weed/mud. Well David, your comment is about to come true, thanks to Michael Hunt for the donation of a "gunter rig" sailing/rowing boat, this will be our winter project. I promise not to foul it up and turn it into a "flower tub".

Thanks to all our helpers and supporters, without you I would have to sit at home and watch that flat glass in the corner? Happy Christmas to you all. We operate ALL year.

»» **PB**



That old man, Father Christmas, has promised to turn up on 9th December from 11.00 to 13.00 at Over Basin. Call Pete, details right. →

**Sailing4Disabled** meets every Tuesday at **Over Canal Basin** from 11.00 to 14.00. It is open to everyone – whether they have a disability or not. Contact: Pete (Long Gone Silver) Bisson: on 07913 015018 • peterwb49@hotmail.com • [www.sailing4disabled.org.uk](http://www.sailing4disabled.org.uk)

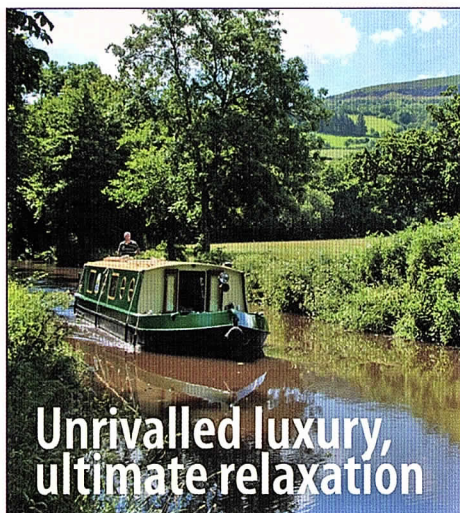


# News from the friends of National Waterways Museum Gloucester

by Norman Mitchell

The Arts Council England maintains the Museum Accreditation Scheme which sets National Standards for UK Museums. It defines good practice, identifies agreed standards and when the accreditation standards have been met the Museums can seek public and private funding contributions. The NWM Gloucester has been awarded Full Accreditation, CONGRATULATIONS.

Those who have been in to the museum in the last fortnight may be aware that the Local Authority planning and listed building consent notice has gone up on the front door for the new double-height entrance scheme. We expect to hear the outcome of the applications at the beginning of November and will give you more details about programmes and who our contractor will be after that. In the meantime, subject to successful planning permission from Gloucester City Council, we intend to close the museum from 2 January to 23 March 2018 to enable the building works to progress smoothly.



Unwind however you choose, and for as long as you like, in the splendour of the Brecon Beacons on the Monmouthshire and Brecon Canal.

To know more: 01873 858277

[www.beaconparkboats.com](http://www.beaconparkboats.com)

The barge Sabrina 5 is now available for letting for meetings, talks and education projects, the access ramp is being modified to make access easier for all. She is fitted with a wheelchair lift, toilets and a kitchen. Enquiries should be made to Samantha Cowell at the Museum, [Samantha.Cowell@canalrivertrust.org.uk](mailto:Samantha.Cowell@canalrivertrust.org.uk).

» NM

Chairman FGWM



The Barge Arm at Gloucester Docks: Sabrina by the Waterways Museum.

Magie Jones



*not quite* ... the last page!

## GRAND HOLIDAY DRAW 2017 Results

Thank you to everyone who helped, in any way, to make this *yet another successful Grand Holiday Draw*. The draw raised £2,367 and well over half of this came from the tickets sent out in the Wharfinger and returned by our members. The draw was once again made at the September Social Evening at Much Marcle.

**1st Prize: Narrow Boat Holiday for 4** – donated by **Black Prince Holidays**: Eleanor Wood, Fakenham, Norfolk.

**2nd Prize: One Day's Boat Hire** – donated by **ABC Leisure Group**: Sandra Tilley, Northampton.

**3rd Prize: One night Bed & Breakfast for 2** at **The Wharf House**: Jane Ballinger, Burghill, Hereford.

Our grateful thanks to **Black Prince Holidays**, **ABC Leisure Group** and **The Wharf House** for donating the Holiday prizes which help to make our annual holiday draw such a success.

**Thank you to everyone who supported the 2017 Grand Holiday Draw in any way.**



*postage*



Please save all the stamps from your Christmas card envelopes. Remember, stamps, albums, old postcards, in fact anything vaguely philatelic, can be turned into cash for the Trust, so please keep them coming. The next target is to pass the £3,000 mark of money raised in this way so we need everything stampwise that you can send us please.

**Thank you to all who have sent in stamps. Please keep them coming.**

Stamps can be taken to a Social Evening or other H&G CT event – or to **The Wharf House** or **Malswick House**. Or send them direct to:- **H&G Stamps**, c/o Steve Bence, 35 Lime Road, Southam, Warwickshire, CV47 1EQ. **Thank you** >>> **SB**

## Advertising in *The Wharfinger*

Show the support of your business by advertising in *The Wharfinger*. Rates from £39 per issue and we will gladly design your advertisement free of charge.

Contact: *The Wharf House* 01452 332 900  
thewharfhouse@yahoo.co.uk

### Page List of Advertisers:

- 34 Beacon Park Boats
- 2 Beta Marine
- 36 Braunston Brokerage/Marina
- 4 Canal Contracting  
(River Canal Rescue)
- 17 Everything Canal Boats
- 15 Geoffrey Urch Garden Services
- 7 Gloucester Quays
- 11 E.B Hayward & Co Ltd.
- 30 Keyway
- 18 Malswick House
- 8 Midwinter Transport
- 32 Moat Contracting
- 28 Print Plus
- 28 The Oak Inn, Staplow
- 27 The Wharf House

**Please support our advertisers –  
SUPPORT OUR SUPPORTERS**

Copy deadline for the next issue  
**MONDAY, 8 JANUARY**



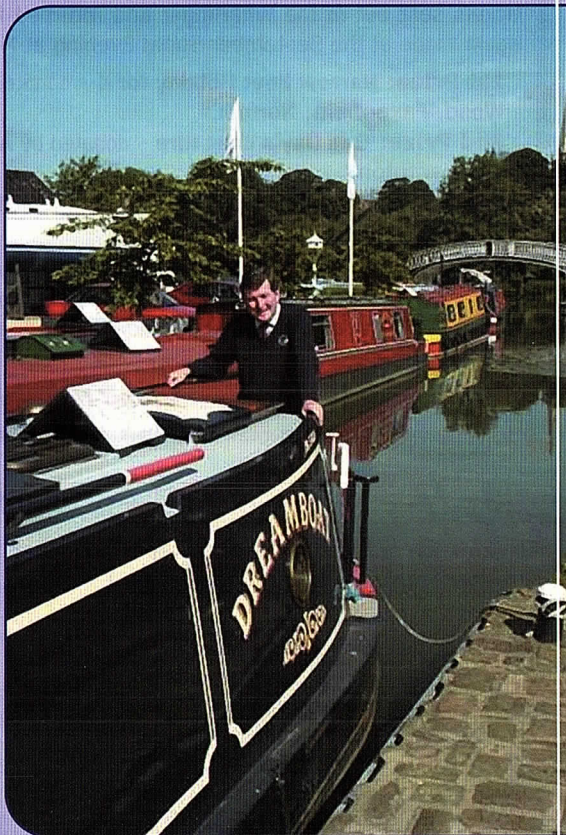
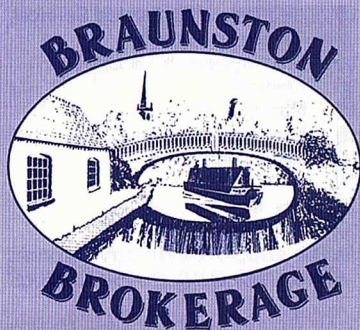
# *Buying or selling your DREAMBOAT?*

*Then make Braunston Brokerage  
– at the heart of England's  
waterways – your first port of call!*

*Established in 1988, we are  
a major player in the selling  
of narrowboats – new and  
secondhand – with a  
reputation for professionalism  
that is second to none.*

*Our marina offers the fullest  
range of support services.  
Uniquely, we have two dry  
docks on-site for surveys,  
hull-blackening, repaints, sign-  
writing and below waterline  
repairs. Also engineering and  
refit facilities.*

*Sell your Dreamboat  
where it will be seen!*



For full information – including our  
competitive brokerage package –  
contact Tim Coghlan at:

Braunston Marina Limited, Braunston,  
Nr Daventry, Northants NN11 7JH  
Telephone 01788 891373  
Fax 01788 891436

Website: [www.braunstonmarina.co.uk](http://www.braunstonmarina.co.uk)  
Email: [sales@braunstonmarina.co.uk](mailto:sales@braunstonmarina.co.uk)



## Want to help?

The Canal Trust is always in need of new volunteers as our activities continue to expand. We can normally find a use for any skill from gardeners to first aiders, brickies

to those willing to help with a shovel, pen or laptop. The H&G CT also welcomes offers of gifts of good quality used tools and machinery from those who no longer need or cannot use it.

## Contacts

*Contact any of these names TODAY!*

**Vaughan Welch**  
0121 477 9782  
kwelch@mypostoffice.co.uk

**David Penny**  
01452 332 900  
david@thewharfhouse.co.uk

**Nigel Jefferies**  
Two Hollylea Close, Bartestree,  
Hereford, HR1 4DN  
01432 850 661  
ncjefferies@talktalk.net

**Maggie Jones**  
01452 618 010  
maggiejones@blueyonder.co.uk

**John Pritchard**  
01432 272972  
johnpritchard32@btinternet.com

**Caroline Jones**  
01594 332 900  
carolinejones641@btinternet.com

**Caroline Buffery**  
01452 332 900  
caroline@thewharfhouse.co.uk

**Wilf Jones**  
01452 413 888  
wilfredjones506@gmail.com

**Ted Beagles**  
01452 522 648  
tedbeagles@blueyonder.co.uk

**Brian Fox**  
01432 358 628  
brianfox74@gmail.com

**Paul Henshaw**  
01684 293 930  
paulhenshawuk@yahoo.co.uk

**Chris High**  
01568 615 575  
chris@chrishigh.plus.com

### H&G Sales and Promotion

Mail Order Sales  
**Janet Mould**  
18, Coningsby Court,  
Coningsby Street,  
Hereford, HR1 2DF  
01432 264 366  
jmould@tiscali.co.uk

**Legal & Project Development Team**  
01452 332 900  
lpdt@thewharfhouse.co.uk

**General enquiries:**  
information@h-g-canal.org.uk

## Visit our websites:

**H&G Canal Trust**

[www.h-g-canal.org.uk](http://www.h-g-canal.org.uk)

**THE WHARF HOUSE**

[www.thewharfhouse.co.uk](http://www.thewharfhouse.co.uk)



'Like Us' on Facebook

[www.facebook.com/hgcanaltrust](http://www.facebook.com/hgcanaltrust)  
[www.facebook.com/TheWharfHouse](http://www.facebook.com/TheWharfHouse)  
[www.facebook.com/malswickhouse](http://www.facebook.com/malswickhouse)

## Want to join?

### H&G CT UK Membership Rates

Please support our voluntary work by becoming a Member of the H&G CT.

A membership form is available online or from

THE WHARF HOUSE.

	Annual	Life
Individual	£10	£200
Joint/Family	£15	£300
Senior Citizen	£7.50	£115
Joint Senior Citizen	£10	£150
Corporate	£25	£500

PLEASE NOTE: All subscriptions and donations are treated as being made under the Gift Aid scheme unless you state that you do not wish us to do this. Payment made by Standing Order greatly assists us and payment remains under your control. All payments to: H&G CT, 6, Castle Street, Hereford, HR1 2NL

Unless specifically stated opinions expressed are those of the author and do not necessarily reflect the policy of the Herefordshire & Gloucestershire Canal Trust. As a Registered Charity, with defined objectives, we cannot endorse the content of any specific advertisement, product or services. The Trust accepts no liability for any matter, or advertising, contained in this magazine. Reproduction of extracts from the magazine is welcomed provided that full acknowledgement is given.

Membership records are computerised. Your entry is available for inspection if you send a SAE to the Membership Secretary.

We try to ensure details of talks/events are correct – please verify with the relevant organiser if travelling long distances.

© 2017/18 Published by the Herefordshire & Gloucestershire Canal Trust.

The Wharf House Company Ltd [No. 4627931] is part of the Herefordshire & Gloucestershire Canal Trust Ltd group of companies. The Herefordshire & Gloucestershire Canal Trust is a non-profit distributing company limited by guarantee [No. 2704407] and is a registered charity [No. 1010721].

Registered Office: The Wharf House, Over Canal Basin, Over, Gloucester, GL2 8DB.



## Hereford

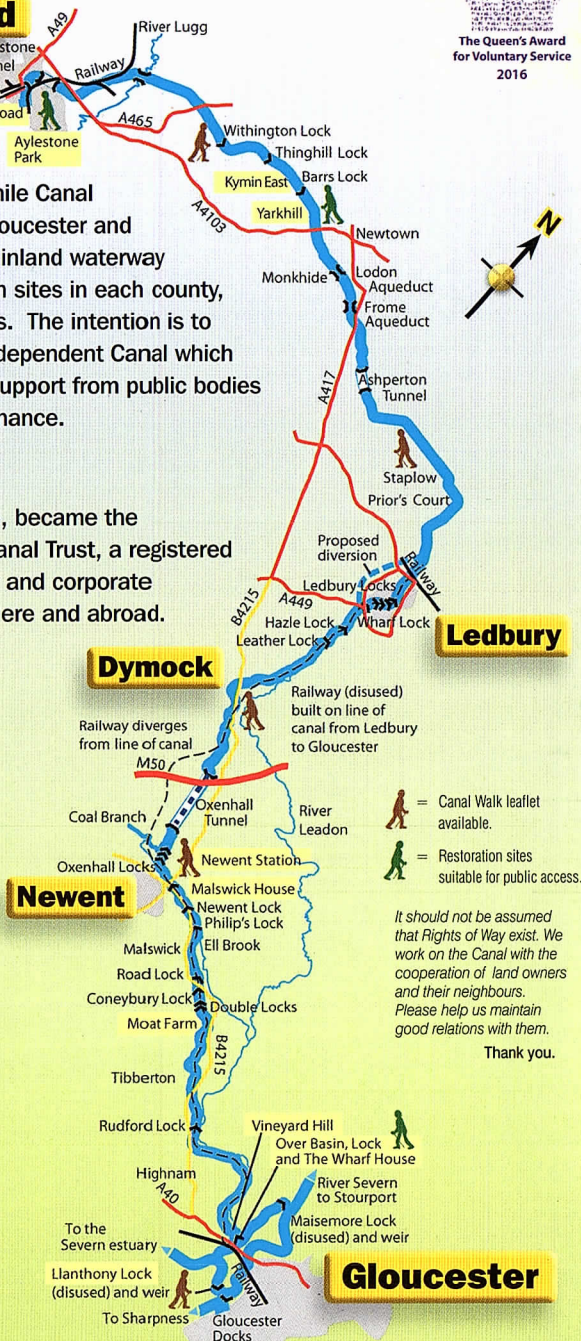
Our objective is to rebuild the 34 mile Canal linking the centre of Hereford to Gloucester and its connection with the 2,500 mile inland waterway network. We have major restoration sites in each county, together extending to some 4 miles. The intention is to provide a financially sustainable independent Canal which does not require regular financial support from public bodies for its future operation and maintenance.

## The H&G Canal Trust

The Canal Society, formed in 1983, became the Herefordshire & Gloucestershire Canal Trust, a registered charity, in 1992. It has an ordinary and corporate membership approaching 1,400, here and abroad.

## The original Herefordshire & Gloucestershire Canal

Work started in 1792 reaching Ledbury from Gloucester by 1798. In 1827 Steven Ballard was appointed to oversee the Canal's completion, which reached Hereford in 1845; this was one of the last major canal routes completed in Britain. The Canal stretched from the River Severn at Gloucester, via Newent, Dymock and Ledbury to Hereford, using 22 locks and 3 tunnels. It was closed in 1881 to allow construction of the Ledbury-Gloucester railway which in turn closed in 1964.



**Gloucester Quays**

Experience More

Map based on original by Martin Ludgate, Canal Boat Magazine.