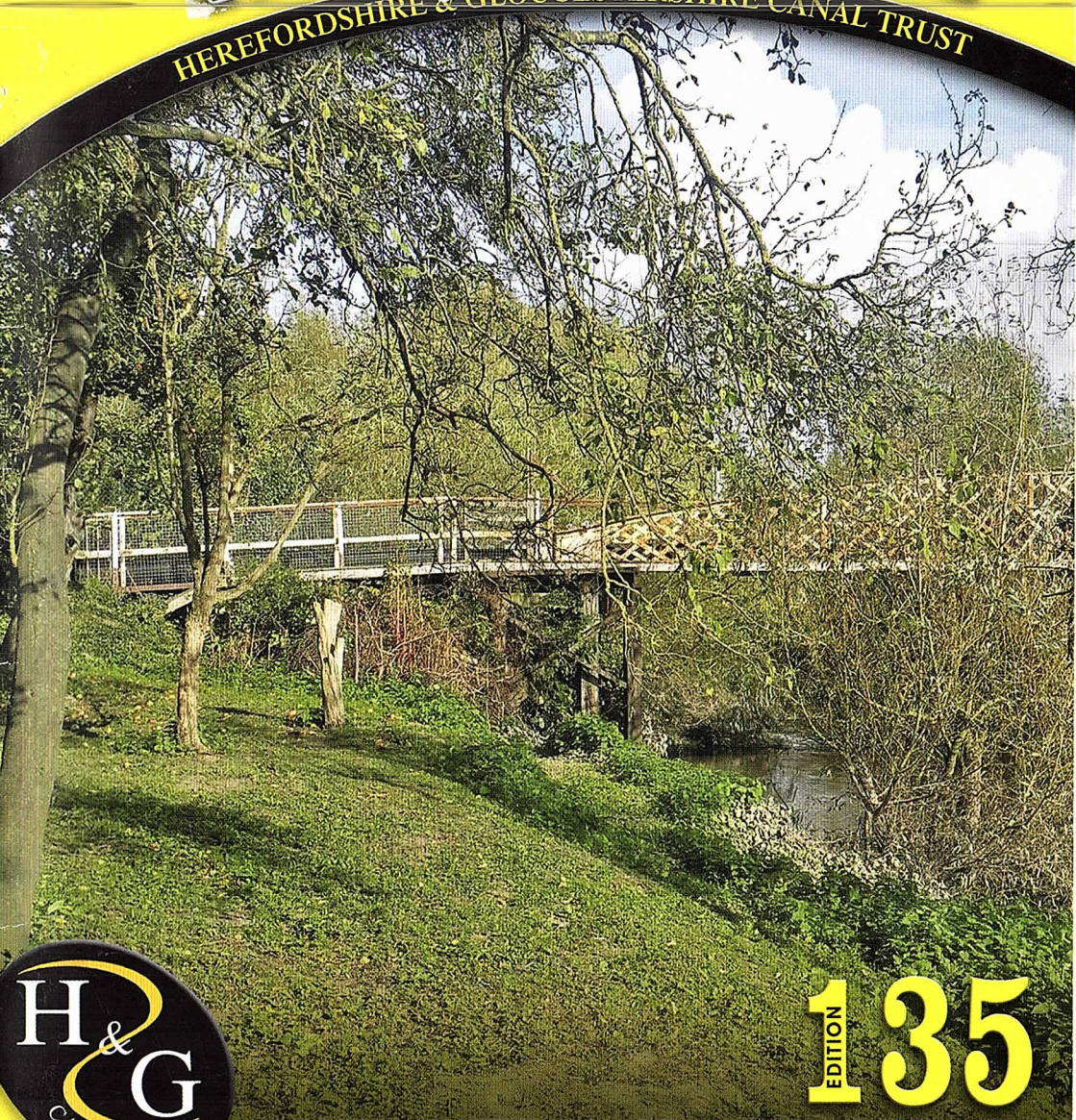


£1 free to members

Spring 2018

# The Wharfinger

HEREFORDSHIRE & GLOUCESTERSHIRE CANAL TRUST



135  
EDITION

REBUILDING A SUSTAINABLE CANAL BETWEEN HEREFORD & GLOUCESTER

Working together in the present to revive the past and secure a better future.®



# HEREFORDSHIRE & GLOUCESTERSHIRE CANAL TRUST

Working *together* in the present to revive the past and secure a better future.®

## Who does what? ...

To get in touch see "Contacts" inside the back cover.

### Honorary Life Presidents:

*Janet Moulton, Cliff Penny*

### Vice Presidents:

*R. E. Barnes TD, Richard Graham MP, Mark Harper MP,  
Duff Hart-Davis, James Hervey-Bathurst CBE DL,  
Sir John Lushington Bt, Jesse Norman MP,  
Diana Organ, Tim Parker, Bill Wiggin MP*

### Board of Trustees

**Chairman:** Vaughan Welch

**Committee:** Roger Holmes, Nigel Jefferies,  
Caroline Jones, Maggie Jones, Eamonn McGurk,  
David Penny, John Pritchard, Tony Sellwood

**Company Secretary:** Dr Caroline Buffery,

**Treasurer:** Roger Holmes

**Accounts Examiners:** Griffiths Marshall, Gloucester

### Corporate Governance Working Group

*Nigel Johnson, Dr Caroline Buffery, Nigel Jefferies,  
Vaughan Welch*

### Health & Safety

**H&S Officer:** John Pritchard

*Hereford & Gloucester Construction Safety Assoc.*

### Fundraising

**Co-ordinator:** Caroline Jones, L&PDT

### Restoration & Maintenance Teams

**Chairman:** Wilf Jones

**Hereford Roving Team:** John Pritchard

**Kymin East:** Wilf Jones

**Yarkhill:** Chris High

**Oxenhall:** Brian Fox, Geoff Hopper

**Moat Farm:** Wilf Jones

**Over and Vineyard Hill:** Ted Beagles

### Major Projects Teams

**Operations Director:** Tony Sellwood

**Malswick Project:** Tony Sellwood, Paul Henshaw,  
John Pritchard, David Penny, Wilf Jones

**Newent Station Project:** Tony Sellwood, Mike  
Harris, David Penny, Wilf Jones, David Gregory

**Mill Barn Project:** Tony Sellwood, David Penny  
**Architects:** Roberts Limbrick

### Membership Services

**Secretary:** Nigel Jefferies,

**Gift Aid:** Janet Moulton

**Volunteer Newsletter** *Hannah Davis*

**Press Liaison** *The Wharf House*

### H&G Canal Sales & Promotion

**Co-ordinator:** Maggie Jones

**Hereford Roving Team:** Janet Moulton, Barbara  
Moses, Ray Moses, Penny Shetliffe, Pat Skeet,  
Heather Worth

**Gloucester Roving Team:** Ginny Birkett, Margaret  
Holder, Maggie Jones, Pat March

### The Wharfinger

**Editor:** Maggie Jones

**Consultant Editor:** Cliff Penny

**Design/Production:** Maggie Jones

**Proofreading:** Becca Moulton, Janet Moulton, Patrick Bugler

**Advertising:** Ginny Birkett

**Distribution:** Janet Moulton, Barbara Moses

**Digital Photo Library:** Colin Dymott

### Website Development

**Team Leader:** Maggie Jones,

**Web Master:** Nick Dymott,

**Committee:** Ted Beagles

### Social Events

**Organiser:** Janet Moulton, **Support:** Nigel Jefferies,  
Stephen and Gillian Chowns

### Talks and Walks

**Co-ordinator:** Nigel Jefferies

*Dick Skeet, Ted Beagles*

## The Wharf House Company Limited

Over, Gloucester, GL2 8DB. 01452 332 900

[www.thewharfhouse.co.uk](http://www.thewharfhouse.co.uk)

### Directors:

**Commercial & Technical Director:** David Penny

**Enterprise Development:** Eamonn McGurk

**Company Secretary:** Dr Caroline Buffery

**Accounts:** The Practice Ledbury

### Legal & Project Development Team

**L&P Development Officer:** Dr Caroline Buffery

**Legal:** Nigel Johnson

**Legal Advice:** Roz Rutter, Simon Freeman,  
No.5 Chambers

**Planning Consultant:** Green Planning Studio

**Engineering:** Thomas Ashworth, Tony Gee & Partners

**Delivery co-ordination:** Tony Sellwood, Wilf Jones

## THE WHARF HOUSE & MALSWICK HOUSE

**Managing Director:** David Penny

**Assistant Manager:** Tessa Berry

**Events and Customer Relations:** Tessa Berry

*All profits from The Wharf House and Malswick House will be used for  
the promotion and restoration of the Hereford & Gloucester Canal.*

# Contents

page

- 3** Editorial: A new year and a new team!
- 5** Meet the Board!
- 7** Introducing Vaughan Welch
- 8** The Wharf House ... major upgrade and refurbishment!
- 9** Fundraising: Grand Holiday Draw
- 9** L&PDT: Your vigilance please ...
- 10** Projects in progress: Malswick
- 12** More Projects ... Moat Farm
- 14** More Projects ... Over Basin
- 16** More Projects ... Oxenhall
- 18** Honorary Life Presidents
- 19** Social Evenings at The Royal Oak
- 20** Volunteer Focus
- 21** Health and Safety matters
- 22** Maintenance matters: Yarkhill and Llanthony
- 23** New logs team
- 23** Have trailer will travel!
- 23** Logs for sale
- 24** History file: Herefordshire & Gloucestershire Canal Navigation Share Certificates.
- 26** Winter Bazaar report
- 27** Travels with the Trust Stand
- 28** News from the National Waterways Museum Gloucester
- 29** Congratulations Eamonn
- 31** Gloucester Model Boat Club
- 33** Sailing4Disabled
- 35** Not quite the last page!  
Snow brought the roof down!  
Postage Stamps  
The Wharfinger advertising.



A welcome bonfire in the winter snow.

Cover image: Maintenance matters at Llanthony. *James Coupland*

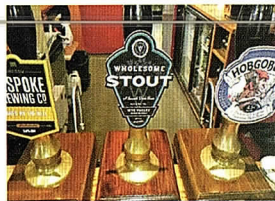
## MALSWICK HOUSE

TRADITIONAL INN • FOOD • FUNCTIONS

A Traditional Country Inn situated on the edge of Newent in the historic Forest of Dean, Gloucestershire.



Cosy winter fires ... large beer gardens ... relaxed atmosphere



You can find us on the  
B4215 just outside of Newent

**01531 822 634**

[www.malswickhouse.co.uk](http://www.malswickhouse.co.uk)  
B4215, Newent, GL18 1HE  
[enquiries@malswickhouse.co.uk](mailto:enquiries@malswickhouse.co.uk)

All profits from Malswick House will be used for the promotion and restoration of the Hereford & Gloucester Canal.

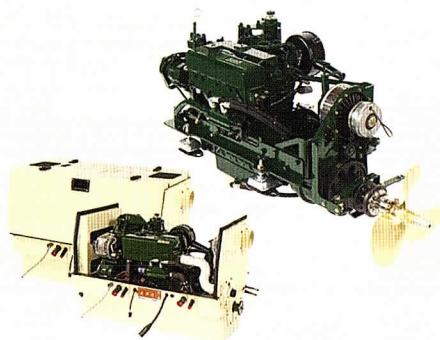
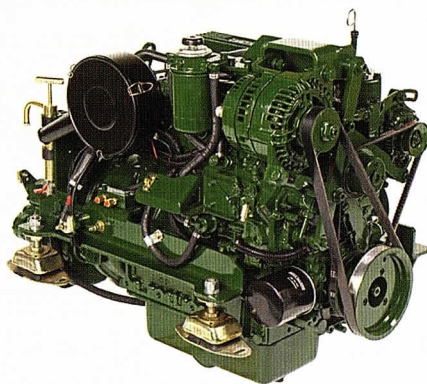


# Your needs . . .

# **BETA** MARINE

Seagoing Saildrives Inland Waterways Marine Generating Sets Spares & Support

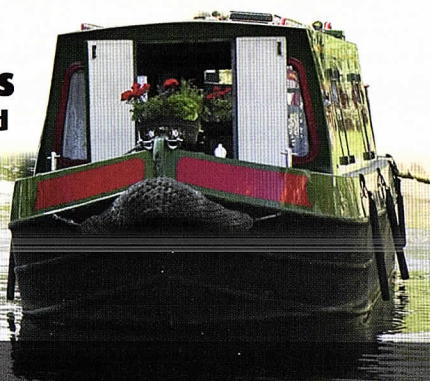
- 30 years of customer centred focus, listening to needs & delivering long term value solutions.
- Specialists in customer advice & support at all points of a products voyage.
- Superb after-sales service via our network of approved engine installers and service centres.
- Extensive range of 14 to 98 HP keel cooled propulsion engines with mechanical or hydraulic gearboxes.



- Super silent acoustic housings, 3.5 or 5.0 kVA travel power, bow thrusters and hybrid propulsion options available.
- Keel cooled Generating Sets <58 kVA with or without super silent acoustic housings.
- 5 year self-service warranty.

**. . . our tailored solutions**  
delivering reliability and peace of mind

## **BETA** MARINE



**www.betamarine.co.uk**

**Tel: +44 (0)1452 723492 Email: sales@betamarine.co.uk**



## A new year and a new team!

Thank you to all our Members who turned out on such a bitterly cold evening to attend the Reconvened Extraordinary General Meeting and the Reconvened Annual General Meeting. It was good that so many were able to attend.

### Extraordinary General Meeting

The new Articles of Association were voted in with no opposition. This was thanks to the work done by the Corporate Governance Working Group. The new articles are available to download from our website. They have been updated to reflect the increase in size of H&G CT since the last ones were compiled and to some extent embrace the improved technologies available to our membership.

### Annual General Meeting

The reconvened AGM noted the Financial Report and Accounts 2016-17 of H&G CT. Both the H&G CT and The Wharf House accounts are also available on our website.

It is the first time for a number of years that we have needed to hold an election for Members to become Trustees/Directors of H&G CT. This is a very healthy situation to see that so many members want to volunteer with all aspects of responsibility and decision making. A big thank you to all candidates that put their names forward.

### Trustees elected

*The following candidates were duly elected:*

Paul Hatt, Roger Holmes, Nigel Jefferies, Caroline Jones, Maggie Jones, David Penny, John Pritchard, Eamonn McGurk, Anthony Sellwood and Vaughan Welch.

It is with great sadness that Paul Hatt had to resign his elected position due to ill health. Sadly, Paul passed away in January;

he was a great friend and volunteer to H&G CT. Our condolences go out to his family and friends. A tribute to him will be in the next *Wharfinger*.

### Board of Trustees

It was suggested that we include a photo of the elected Trustees and their responsibilities in this edition to help members identify them. An excellent suggestion, and their 'mugshots' can be viewed on page 5.

It is the responsibility of the first Board Meeting after the AGM to elect the officers of the Board. I am pleased to announce that we now have a new Chairman in **Vaughan Welch**. He has been a member for many years and very well connected to the waterways nationally. He has kindly given us his first report to **The Wharfinger** on page 7, so you are better acquainted with his experience.

We also have a new Treasurer in **Roger Holmes**. Some of you will know him already from Inland Waterways Association connections and a regular attendance at the monthly socials. He has a great deal of experience of local authority finance and so should be a good asset to H&G CT.

### Honorary Life Presidents

**Janet Moulton** and **Cliff Penny** have been appointed **Honorary Life Presidents** by Board of Trustees, reflecting their huge contributions to H&G CT. A fuller report available on page 18.

We hope you all welcome the new structure and elected positions. We all look forward to working with you taking the Canal forward to its next stage of restoration.

Thank you >>> MJ



# UP TO 70% OFF OUTLET SHOPPING

Quality restaurants, bars  
and a 10 screen cinema

*Carluccio's*

☆cineworld

*Zizzi*  
Restaurants

M&S  
OUTLET

FRIDAYS

JAEGER



Gloucester Quays

Experience More

[gloucesterquays.co.uk](http://gloucesterquays.co.uk)

## Hundreds of Contractors... Just *one* number.

Canal contracting provide every aspect of  
boat maintenance, engine replacement or  
insurance work that you could possibly need.

We work with a national network of  
specialist contractors including:

- Marine engineers
- Plumbers
- Painters
- Glaziers
- Carpenters
- Heating engineers
- Electricians

**CC Canal Contracting**  
MARINE ENGINEERING SERVICES

We cover boat insurance work including:

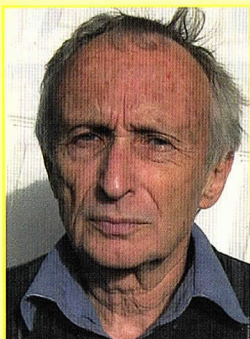
- Rescues and boat salvage
- Boat recovery
- Window boarding up and replacement
- Hull repairs
- Gearbox and propulsion issues
- Groundings
- Dealing with fire and water ingress
- Full rewires and refits

CALL: **0845 4308021**  
FOR A NO OBLIGATION QUOTE

OR VISIT US **ONLINE** AT  
**[www.canalcontracting.co.uk](http://www.canalcontracting.co.uk)**



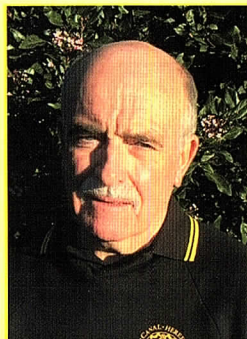
# Meet the new Board!



**Vaughan Welch**  
Chairman



**Roger Holmes**  
Treasurer



**Nigel Jefferies**  
Membership Secretary



**Caroline Jones**  
Fundraising



**Maggie Jones**  
The Wharfinger Editor  
Sales & Promotion



**Eamonn McGurk**  
The Wharf House  
Enterprise Development



**David Penny**  
Commercial & Technical  
The Wharf House MD



**John Pritchard**  
Health & Safety



**Tony Selwood**  
Major Projects

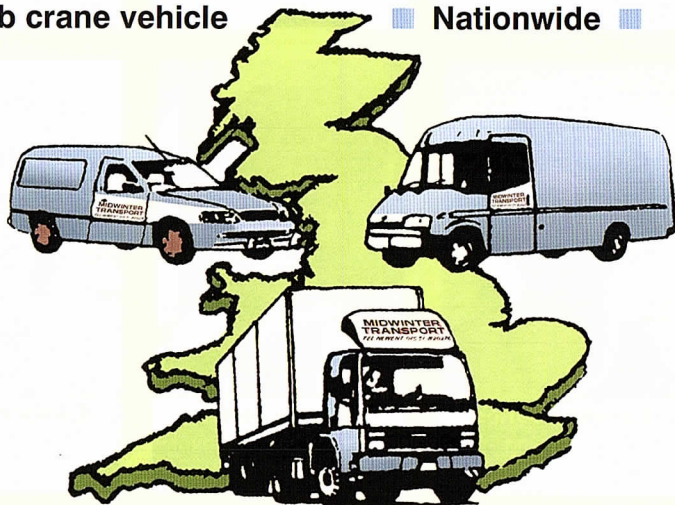


# MIDWINTER TRANSPORT

ESTABLISHED 30 YEARS

With a full range of vehicles including

- flat curtain sided and refrigerated ■
- from half tonne Escort to 38 tonne artic ■
- Hiab crane vehicle ■ Nationwide ■



## TOTALLY COMMITTED TO DELIVER

Newent 01531 820276

Fax: 01531 822247

Strawberry Hill, Newent, GL18 1LH

[www.midwintertransport.co.uk](http://www.midwintertransport.co.uk)

email: [midwintertransport@yahoo.co.uk](mailto:midwintertransport@yahoo.co.uk)





## *introducing* **Vaughan Welch**

As your new Chairman, I thought it might be of interest to give you a brief resumé of my background, both professionally and in regards to the waterways.

I took early retirement from a former nationalised industry where I was an Engineering Procurement and Contracts Manager. In this position I had a wide remit that included the legal, health and safety, financial elements and contracts. Hence my involvement with the Trust's new articles.

I am a member of the Canal and River Trust Council. As a boater I representing boating interests, and sit on their Operations Navigation Advisory Group, which looks after the engineering fabric of the main waterways network. Eighteen months ago, I retired as the last IWA Restoration Committee Chairman upon joining the Board of the Avon Navigation Trust. Since then I have joined the Boards of a couple of other restoration trusts.

More significantly, I was asked to join the Board of the former Droitwich Canals Trust when that project was in the doldrums in the late 1990s. I helped successfully turn it round and then remained on it, most recently as its Chairman, until it was finally wound up after the successful completion of the canal's restoration six years ago. I also represented that Trust on the restoration partnership from its inception until its demise, also in 2012.

It is now six years since there were any major additions to our national waterway network, when, in 2012, the two Droitwich Canals were reopened. They have made a significant contribution to the national waterway network. Subsequent studies

have shown that they have made a massive contribution to the economy of the then sleepy town of Droitwich, which was gradually dying following the loss of the salt trade at the turn of the last century.

Since then only a few isolated miles of waterway have re-opened and they have made little contribution towards the growth of the national network, or indeed the local economy, because it is the boats that attract the visitors to the towns that they pass through.

If their lottery bid is successful, within a few years we might see the connection of the now isolated section of the Cotswolds Canals, through Stroud to the national network. This will undoubtedly bring much needed waterborne traffic from the main canal network down to Gloucester and will have a positive effect on the economy of the city.

We need to be in a position to capitalise on the potential when it arrives. Clearly this can only be achieved if we are physically able to accommodate that potential business, especially when normally there are a couple of peak years after something new opens before visitors number drop to what will become the norm. I would urge you all to help us make our project ready to be able to benefit from that potential market when it arrives.

In reality there are very few projects in the country that, without major expensive connection works, can connect straight into the main network and our project is one of these fortunate few. So, with your continued help and support, let's all work together to be ready to open the Over section of our canal when the Cotswold connects to Saul.

»» **VW**



# THE WHARF HOUSE

Over the Christmas break *The Wharf House* restaurant, lounge/visitor centre and two of the bedrooms were upgraded to better reflect current styles and expectation of a rosette establishment.

The work was carried out by the staff, led by Tessa Berry and contractor, James Coupland. There was also some help from a number of Volunteers. The current reception desk and wine rack area were knocked through to form a bar/reception. This can serve to both rooms and the current bar was removed to make way for the table



The photos show the lounge/visitor centre where two separate seating areas have been created.

originally sited by the wine rack. This ensured there was no impact on the number of covers but considerable improvement in customer experience and impression. It also improved the staff and service efficiencies with the bar and reception desk being in one place.

At the same time, two of the bedrooms were also going through major refurbishments. This will be reported more fully in the next edition.

A big thank you to all concerned; it all looks great. But don't take my word for it, come and see the improvements for yourself and stop for a coffee, afternoon tea or a meal. Then wrap up warm and enjoy a walk along the towpath to see the snowdrops and many signs of spring approaching. It is a great time to kick-start your New Year with a visit to Over Basin!

»» MJ

## THE WHARF HOUSE

AWARD-WINNING WATERSIDE  
RESTAURANT WITH ROOMS

Tasting and à la carte menus

Afternoon Tea and Terrace Menu

Lighter lunches including paninis from £5.50.

Riverside terrace for Alfresco Dining

Tues-Sat 12-4pm and 5.30 onwards

Mon & Sun 12-2pm

01452 332 900

[www.thewharfhouse.co.uk](http://www.thewharfhouse.co.uk)

Over, Gloucester, GL2 8DB

[enquiries@thewharfhouse.co.uk](mailto:enquiries@thewharfhouse.co.uk)

Directions: Turn off the A40 at traffic lights 250 yds west of Over Roundabout (junction A40/A417).  
GR SO 816197



All profits from The Wharf House will be used for the promotion and restoration of the Hereford & Gloucester Canal.



# fundraising **Grand Holiday Draw 2018**

Friends and colleagues will be eager for a great holiday for just £1!



HEREFORDSHIRE & GLOUCESTERSHIRE CANAL TRUST

## GRAND HOLIDAY DRAW 2018

1<sup>ST</sup>  
PRIZE

### NARROW BOAT HOLIDAY for FOUR

ONE WEEK PRIOR TO 31/5/19 Excluding Bank Holidays. Donated by Black Prince Holidays

2<sup>ND</sup>  
PRIZE

### ONE DAY'S BOAT HIRE

To be taken in 2019, excluding Bank Holidays. Donated by Beacon Park Boats

3<sup>RD</sup>  
PRIZE

### ONE NIGHT BED & BREAKFAST for TWO

at The Wharf House, Over Wharf, Gloucester. Donated by The Wharf House Company

Promoter: Mrs J. Moul. 18 Corningsby Court, Corningsby Street, Hereford, HR1 2DF  
Prizes to be drawn at the September Social at Royal Oak, Much Marcle on September 18<sup>th</sup> 2018.  
Registered under the Gambling Act 2005.

TICKETS £1 each



**Once again we have some great prizes, so let's make this another successful Year!**

The prize winners will be drawn at the Social Evening at The Royal Oak, Much Marcle, on 18 September 2018. Our thanks to Black Prince Holidays, Beacon Park Boats and The Wharf House for donating the holiday prizes – so every pound raised is a pound towards restoration of the Canal.

This year again we have sent you two books of tickets to sell to family and friends. More books can be sent to you if required. Please contact Janet Moul. (*See inside back cover or tickets for details*)

We appreciate that some recipients are not prepared to buy or sell draw tickets – we apologise but we do not have the

resources to be selective in whom receives tickets. There is no obligation to return unsold tickets. In order to save costs we have not included tickets in copies of **The Wharfinger** sent to Councillors, Local Authorities and businesses.

If you wish to support us please contact Janet Moul on 01432 264 366 and she will be delighted to send you some tickets.

**Thank you.**

**Please Note:** All completed ticket stubs and money from their sale should be returned to the promoter, **Janet Moul**. *See inside back cover or tickets for details.*

## L&PDT News *from the Legal & Project Development Team*

### **Your vigilance please ...**

During 2017, we acquired several additional stretches of canal at Malswick and Newent. L&PDT continue to work on land acquisition and as already reported we require more funds in order to purchase the land required.

The line of the whole canal is protected by the local authorities in both counties

and as a result we are usually informed should owners and developers wish to make changes along it. However this is where we would appreciate your help, if you should spot that a piece of land or building along the length of the canal is put up for sale or if there are any new development plans that may impact on our restoration please contact us via the website: **h-g-canal.org.uk** or phone the team at **The Wharf House** on **01452 332 900**.

**Thank you**



# projects *in progress* ...

*Paul Henshaw writes:*

## Malswick

The autumn weather was very favourable which enabled us to make good progress with the repairs to the two bridges.

The upstream parapet on the west bridge has been completed and good progress is being made rebuilding both parapets on the east bridge.



Wilf getting the bonfire going – snow, what snow!

However, the weather broke during December and the flood plain did “what it said on the tin” – it flooded. It was a case of “rain stopped play” and work on the bridges was temporarily suspended.

Undaunted, we resorted to Plan B and started the careful process of selectively clearing the small west woodland area. The recent wildlife survey confirmed that there were no endangered species present in the immediate vicinity and so we were able to proceed.

The clearing work soon highlighted the route of the original canal and the railway



Putting on the top course.



Please note that there is  
**NO PUBLIC ACCESS**  
on this site until the Canal has  
been restored here, thank you.

The completed parapet on the west bridge.





A well deserved break for lunch.

track, which ran alongside. A number of small railway artefacts such as telegraph wire insulators and perhaps the station master's bicycle were discovered amongst the trees.

A new temporary gateway into the wood has been installed to enable the volunteers to gain easy access.

We have continued the practice, introduced by Alan McBride at the Moat Farm site, of creating rotting wood piles to help stimulate a healthy bug population and maintain wildlife diversity.

Seven of our group recently attended a First Aid Training course at Malswick

House. Given that various groups would be working at different parts of the site, it was considered vital that there was adequate cover.

Finally, we extend a warm welcome to new volunteer Neil King who has recently joined us.

We are looking for people with bricklaying skills. If you feel you would like to help please contact Paul Henshaw on 01684 293930

***Please note that the site will not be open to the general public until the canal has been formally completed.***

**>>> PH**



The new gate into the woodland.



Neil building up the rotting wood pile.

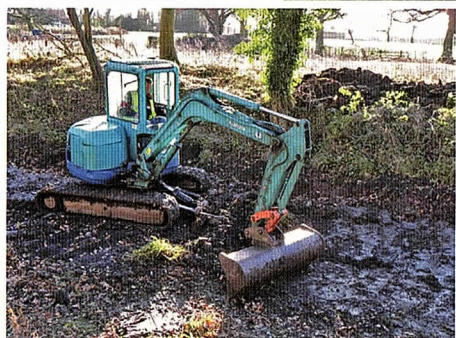
Alan McBride / Paul Henshaw



## more projects in progress ...



The removal of spoil from the bed of the canal.



### Moat Farm

*Wilf Jones writes:*

After a long spell of dry weather in September and October a small team began the excavation of the middle section of canal at Moat Farm. This had previously been partly excavated earlier in the year, when a change in weather made the bed rather damp and unsuitable to withstand the rigours of an excavator and dumper truck. The top section had been pumped dry and excavated except for an access ramp next to the top dam.

Over three days most of the bed was excavated despite a hydraulic leak appearing. A call to resident hydraulic expert Andy, resulted in a loose joint being tightened, and work continued, after a top up of hydraulic oil.

Unfortunately, the next working day of excavation a bigger leak appeared, a combination of over filling the hydraulic tank and a split pipe, and work stopped immediately to await repair.



The split pipe was removed and a blanking connector put in place, the pipe will be replaced later as it has only an auxiliary pipe, also the cap to the hydraulic tank was replaced.

A few weeks later Martyn was able to complete the planned work and remove the middle dam. Later, and by the time you read this, the top dam will have been removed. Now we have created a new access point to the canal from the adjacent field.

Thanks to Alan, Graham, Steve, Andy, Ted for their support and patience during an eventful 'dig'.

»» WJ



The removal of the middle dam.



# **E.B HAYWARD & Co.LTD** *Sheet Metal Work, Welding & Fabrications*

We are a family run business established over 50 years ago, specialising in sheet metal work and fabrications in most metals including mild steel, stainless steel, aluminium, titanium, copper and brass.



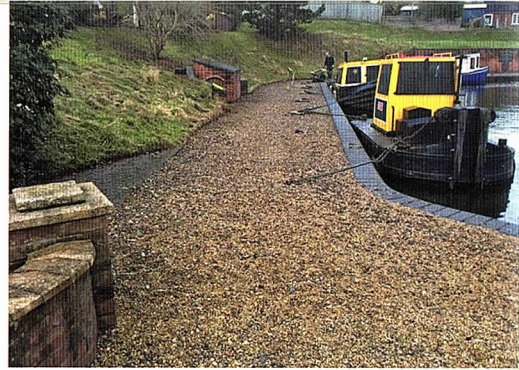
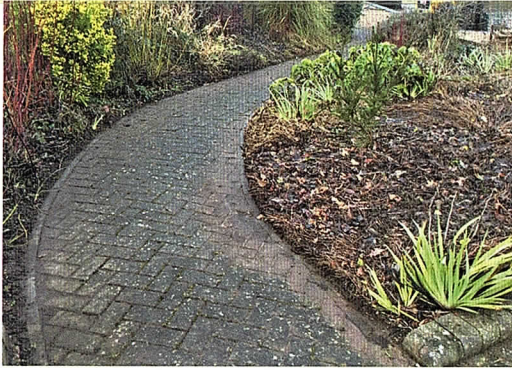
- Items can be manufactured to your own drawings or from instructions.
- Quantities from 1 to 10,000.
- Sizes can range from a washer right up to fabrication of 1 tonne.

We have a wide client base with particular involvement in hydraulic press, concrete, materials handling, feed and flour milling industries.

It has been our pleasure in supporting the Herefordshire and Gloucestershire Canal Trust for over 20 years, and we will continue *to work together in the present, to revive the past, and secure a better future.* © H&GCT

**Simon Hayward: 01452 700384, Fax 01452 700740**  
**SHEET METAL WORKS, ASHLEWORTH, GLOUCESTER, GL19 4JJ**





Path through Skew gardens and mooring area weed free and tidy.

## Over Basin

*Ted Beagles writes:*

### Skew Gardens

Visitors to Over may have noticed a smartening up of the area around the site entrance and the towpath by the basin wall. In addition to our normal team of gardeners, in recent weeks we have been assisted by estate residents John and Monica Hamer, whose help has been much appreciated.

In the same area, a new site entrance sign has recently been erected by Dave and Mike to welcome visitors to the basin. The old faded sign has been usefully recycled to patch the roof of the container at Malswick House.



Dave and Mike fitting new sign.

### Suction pipe

During the summer it became necessary to position the suction pipe of the topping up pump at the far side of the river Leaddon. This worked well, but after a prolonged period of wet weather the mud banks at the bottom moved and covered the pipe and blocked the strainer. We managed to clear the blockage by back pumping through the pipe, and were able to top up the canal as usual. All was well until we tried to remove the pipe over winter when we were unable to get it out. So there it remains until we get an excavator on site that is able to remove it. Fingers crossed that it doesn't get washed away in the meantime.

### Containers

The site containers have become so full of stuff that it has become very difficult to get in and find things, after 15 years of accumulative collection of things that might come in useful one day.

A lot of it is past its 'best before' date and has been burned if appropriate, we are trying to find a new home for duplicated useful stuff. The remainder we are reorganising so that things can be more easily located when needed, to which end John is fitting wall mounted bins in the workshop. It is coming along OK, but we still have some way to go to complete the task.





Suction pipe buried in mud and debris.



Suction pipe with river in flood.

## Natural arch

Whilst clearing away a tree that had fallen across the mill race in the high winds we noticed that the shape of the trunk formed what looked like a natural arch across the race. Thus after we had cleared all the branches and made sure it is stable, we left it as an interesting feature, until such time as it decays. It is best seen from the ramp leading down to the flood plain at the start of the Vineyard Hill section.

Natural arch  
over mill race.



John fitting bins to  
the workshop wall.

## Heritage boats

Renton is now running well with the temporary fuel pipe, and we are now sufficiently confident to go ahead and complete the permanent installation. Both the narrow boats now run regularly along the full length of the canal at Over. The new panelling has also been completed inside the cabin of Bosley. Pat continues to keep the outsides looking smart, by touching up the paintwork, whenever the weather permits.



Ted Beagles / Monica Hamer

Renton returning from trip along Vineyard Hill.

## Christmas lunch

Around 40 Volunteers and their partners from Over, Malswick and Moat Farm came together once again for a Christmas Lunch on the Wednesday before Christmas. We all say a big thank you to Pat March for organising it again.

»» **TB**





New young trees planted in old hedge row.



Some of the branches pulled from the brook.

## Oxenhall

*Brian Fox writes:*

As a site leader I have to be constantly aware of what is going on around me and in liaison with Wilf work out a programme of work to keep all the team occupied. Last summer there was around 12 of us busy at Oxenhall but with the need for part of the team to be seconded to Malswick, the regular team is looking somewhat depleted.

Our original plans were for a gang to rebuild the wing wall below the lock and some pontoons were kindly loaned to us by Sailing4Disabled to help with the task. A review of potential options clearly indicated that the work at Malswick was now top priority and our plans for the wing wall at Oxenhall would have to be put off for the foreseeable future.

About half of my old group have now been transferred to Malswick where they can utilise their brickwork skills, developed over the years, on the bridge repairs. Tools have been shared out and one of our spare site huts has been taken to Malswick to store things and have a base for shelter during inclement weather.

The pontoons have been retrieved from the water below the lock by those left at Oxenhall and returned to Over with our thanks and these volunteers have a programme of winter maintenance work which is now keeping us fully occupied.

### Hedge maintenance

The hawthorn hedge which was cleared of several fallen trees has now been replanted with about 20 suitable trees to fill the gaps. Unfortunately, three more trees blew down over the Christmas break, one of which blocked the towpath, and these have now been cleared. More fallen trees had also accumulated in the





Spot the newly planted Corsican Pine.

Ell Brook next to our yard forming a considerable barrier which could have resulted in local flooding if left. These have now been retrieved taking up a whole day with the help of our trusty tractor and will provide a lot of logs once they are dried out.

## Tree planting

Five Corsican pines have been planted next to the old station to replace those which have fallen over the years but it will be a few years before they reach anywhere near the height of the old trees (about 100ft).

## Site investigations

The land which we now own in Newent includes an area to the side and rear of the fire station which is shown on old maps as including part of the canal with a winding hole which permitted working boats to turn around after loading at the adjacent Newent wharf and head back to Gloucester. It is currently waste ground covered in an assortment of brambles, nettles and trees of all sizes with no

indication of its former use. A start has been made on clearing this 'jungle' which included a couple of extra trees brought down by the weight of snow we had just before Christmas. This clearance work will continue until the start of the nesting season when we hope to have a clearer view of the limits of the old canal and perhaps do a few trial digs to see what we can find. >>> **BF**



Land to rear of the fire station which used to be the canal winding hole.

Brian Fox



# Honorary Life Presidents

The Board of Trustees have decided to appoint two long-standing volunteers as Honorary Life Presidents following their standing down from the former Council of Management during the past months.

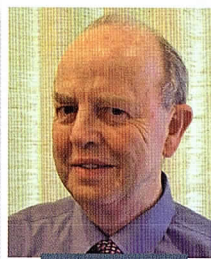
This is in recognition of their exceptional voluntary contribution in progressing a small preservation initiative into an inland waterways project that is often used nationally as an example of best practice of a sustainable canal restoration.

**Janet Moulton** has worked in so many different ways to progress the work of the H&G CT including two terms as Chairman. Janet continues to work for H&G CT in a number of supportive ways, in Sales and Promotion and distribution of **The Wharfinger**. Janet also runs the very successful Monthly Socials at Much Marcle and the Grand Holiday Draw. On many occasions over the years, despite other commitments, Janet has dependably stepped into the breach to get a task successfully completed. A resumé of Janet's extensive contribution to the work of the H&G CT can be found on page 21 of edition 130 of **The Wharfinger**.

**Cliff Penny** was the last Chairman of the former Canal Society and the first Chairman of the H&G Canal Trust and has served on the Committee/Council of Management of the Society/H&G Canal Trust for 30 years. Cliff held senior positions within the water industry and then eight years running a highly regarded specialist consultancy, Penny Environmental & Planning with son David. Cliff has utilised his professional skills as a Chartered Civil Engineer and Chartered Town Planner to promote and



Janet Moulton



Cliff Penny

successfully defend the H&G Canal in numerous ways, assisted by son David, who has taken over all of this crucial aspect for H&G CT in the more recent years. Our readers will all know Cliff as the Editor of **The Wharfinger**, but as reported in the last edition Cliff has now retired from that position too. He continues in a supportive role. Cliff's wife, Joan, was also a very active volunteer in the earlier years so the Pennys are very much a family of Canal volunteers!

Both Janet and Cliff have frequently acknowledged that their successes would not have been possible without the teamwork of our valued H&G CT volunteers – with both pen and spade and every conceivable way in between. Whilst no individual can ever justifiably claim to be responsible for the success of an organisation such as ours, Janet and Cliff's contributions are recognised by the Board of Trustees as playing a significant part in the successes of the H&G CT to date – hence the unanimous decision to make both Janet and Cliff Honorary Life Presidents.

Now it is our turn to thank Janet and Cliff for the thousands of hours that they have so far spent as volunteers in a multitude of significant roles. We hope you will all join us in saying a big **THANK YOU** to them both.

There will be a short ceremony to celebrate past Chairmen Janet and Cliff's appointments as Life Presidents at the commencement of the Social Evening at the Royal Oak, Much Marcle, at 8pm on Tuesday 20 March.

»» **Board of Trustees**



# Social Evenings

*at The Royal Oak*

The third Tuesday of every month (except December)  
at **The Royal Oak**, Much Marcle, HR8 2ND  
7.30 for 8pm start.



Please support our monthly meetings, make a note on the calendar and tell your friends and neighbours. We have an excellent venue and interesting speakers on a wide range of topics. Why not share transport and make an evening of it – *everyone is welcome!*

20 February

## **Rout on the Riviera – Paul Barnett**

The Slapton Sands Disaster – following the tragic events of April 1944 and one man's determination to recover a sunken tank.



20 March

## **Presentation to Janet Moulton and Cliff Penny**

*Followed by* **Boaters' Craft Group**

– from the Gloucester Waterways Museum

Telling the story and lives of the narrow boat women and demonstrating some of their crafts.

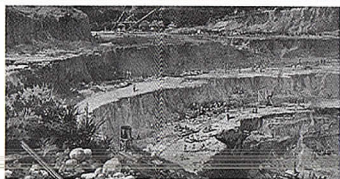


17 April

## **The Creation of the Panama Canal**

– Alistair Patrick

We hear about a slightly larger canal than usual!



15 May

## **The Kennet and Avon Canal**

– Mike Rodd

An update on a southern canal after its restoration and re-opening.





# volunteer focus ...

Bob Reid is a regular volunteer on our Over site. He turns his hand to a variety of tasks and recently has been leading a team building the 'Great Wall'.



Bob Reid

*Robert, how long have you been volunteering with the H&G CT?*

I have been volunteering for about six and a half years.

*What attracts you to the waterways?*

To be honest it was not totally the waterways that attracted me. I had seen an advert for the open day and beer festival, a friend said going would be a waste of time as all that was there was a pond with a couple of boats on and there was never going to be a canal. Curiosity and the thought of a couple of beers got the better of me, so I attended the open day. Having been shown round by Ted I decided to volunteer.

*What drew you to volunteer with the H&G CT?*

Having attended the open day and being shown round by Ted and seeing what the canal had to offer I decided to join up. I spent all my younger days on the farm in the country before moving into the town, the canal offered open spaces, peace and tranquillity and various wildlife which I missed after leaving the farm and also there was the prospect of some exercise.

*What do you enjoy about working with the team at Over?*

Its great working with the team at Over. We have people with various skills and personalities but we all get on together working on various projects. Even if you are not working on a particular project it's interesting to know how things are going. Companionship comes high on the list

*Tell us about some of the main duties you carry out as a volunteer?*

I am happy to tackle most tasks, but recently mainly brick laying, block paving and tractor driving has taken up my time.

*Tell us more about your work at Over?*

My main involvement at the moment is working with Ivor on the cycle shed which is part of the great wall, we are in the process of building the form work to support the construction of the brick arched roof. Unfortunately rain, ill health and holidays are holding things up. Hopefully now we are in the New Year and I have had all my physical repairs done and weather permitting we should make progress.

*What was your work before volunteering for H&G CT?*

Five year Engineering Apprenticeship with Smiths Industries, then a toolmaker making press tools, jigs & fixtures and assembly tools, using various machines, lathes, milling m/cs, grinders, jig borers, jig grinders and spark eroders. I then transferred into the drawing office as a tool design engineer. On leaving Smiths, I joined L & H Racal followed by



Bob with Ivor working on the foundation of the 'Great Wall'.



Wyvern Designs as a tool and Special Purpose Machine Designer. Following redundancy, I joined Rank Xerox as a Tool and Special Purpose Machine Designer, followed with spells as Quality Engineer, Product Audit Engineer and 11 years as the Plant Quality Systems Manager.

*What would you say to someone considering volunteering with us?*

Come and join our friendly team, you will get companionship, fresh air, varied activities and plenty of cups of tea. The activities here are varied, browse through a couple copies of *The Wharfinger* and you will see the various activities that volunteers get involved in.

*What is your proudest volunteer moment?*

I can't think of any particular moment, but each time an activity is completed it gives me a buzz.

»»BR

## Health & Safety *matters ...*

*by John Pritchard*

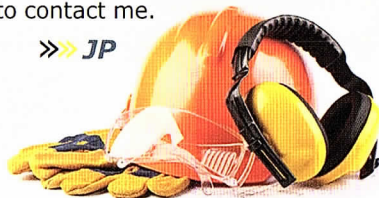
One of the biggest responsibilities the Board of Trustees is to ensure that all our volunteers are safe when they are working on any of our sites.

Tragic events elsewhere have inevitably put even more focus on this area. The Board has decided that we would benefit from professional support, and as a result we have joined **The Hereford and Gloucester Construction Safety Association**. Nick Jones is our Safety Advisor and he started his work with a visit to our Malswick site. Visits to our other sites will follow. After each visit Nick will write a report which will help us plan future Health and Safety provision for that site and the Trust as a whole.

As a voluntary organisation the cost of some of the training we would like to offer is prohibitive, but where it is essential we will of course support volunteers. We also continue to develop 'in-house' training and recently this has included training for the new Grillo mower and powered pole pruners.

In November nine volunteers undertook First Aid training at Malswick House. Everyone passed and we now have much better First Aid cover across all our sites. If you have any Health and Safety concerns please do not hesitate to contact me.

»»JP



*We are looking for volunteer*  
**QUANTITY SURVEYOR/  
ESTIMATER ...**

... to help with specific projects. If you have some experience in this field and willing to offer your services please contact Projects Manager, Tony Sellwood on 07525 839520.

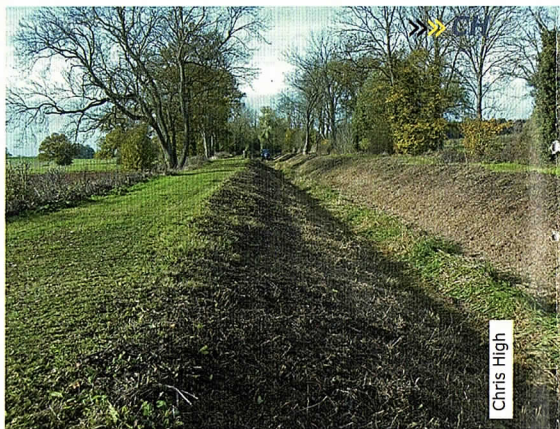




# maintenance *matters...*

## Yarkhill *Chris High Reports:*

In early November we had a contractor in to mow and tidy the length at Yarkhill.



Chris High

The two photos show the neat tidy stretch at Yarkhill.

## Llanthony *David Penny Reports:*

We may no longer have a team of volunteers working at Llanthony on the banks of the River Sever near Gloucester Docks, but still there is a maintenance plan being carried out by James Coupland. He is doing an excellent job of keeping the grass cut and controlling the undergrowth.

In the autumn James treated the private footbridge over the river with an anti slip paint coating. >>> **DP**



James Coupland

Above: Painting of the footbridge in progress.

Left: the grassy banks down to the river in the autumn sunshine.



# NEW!

## Logs team

We are setting up a new team to manage an operation to sell logs based the yard at the rear of the Malswick House. The team will be responsible for arranging for the corded wood harvested from Canal operations to be delivered to the yard. They will be seasoned, split with a hydraulic log splitter, and sold to local customers. This will include delivery. All proceeds will support the canal restoration.

Volunteers who are willing and interested in helping with this operation should contact **Tony Sellwood** on **07525 839 520**.



Our recently purchased Grillo mower now has a purpose built trailer on which it can be moved between our sites. The work was carried out thanks to our blacksmith team Henry and Andy.

The new mower is already proving very satisfactory for its intended use. It has worked on several of our sites and that is why having the ability to tow it to where it is required was important. A task on Vineyard Hill put it through its paces to transport materials up the hill. More will be reported on this next time.



LANDSCAPING  
HEDGE CUTTING  
TREE SURGERY  
FENCING

**GEOFFREY  
URCH GARDEN  
SERVICES**

CONTACT 07950 136074/01531 805040  
INFO@GEOFFREYURCHCONTRACTS.CO.UK  
WWW.GEOFFREYURCHCONTRACTS.CO.UK



## Logs for sale

The logs available are mainly ash and hawthorn.

If you would like to order a delivery please contact

**Tony Sellwood** on  
**07525 839 520**.





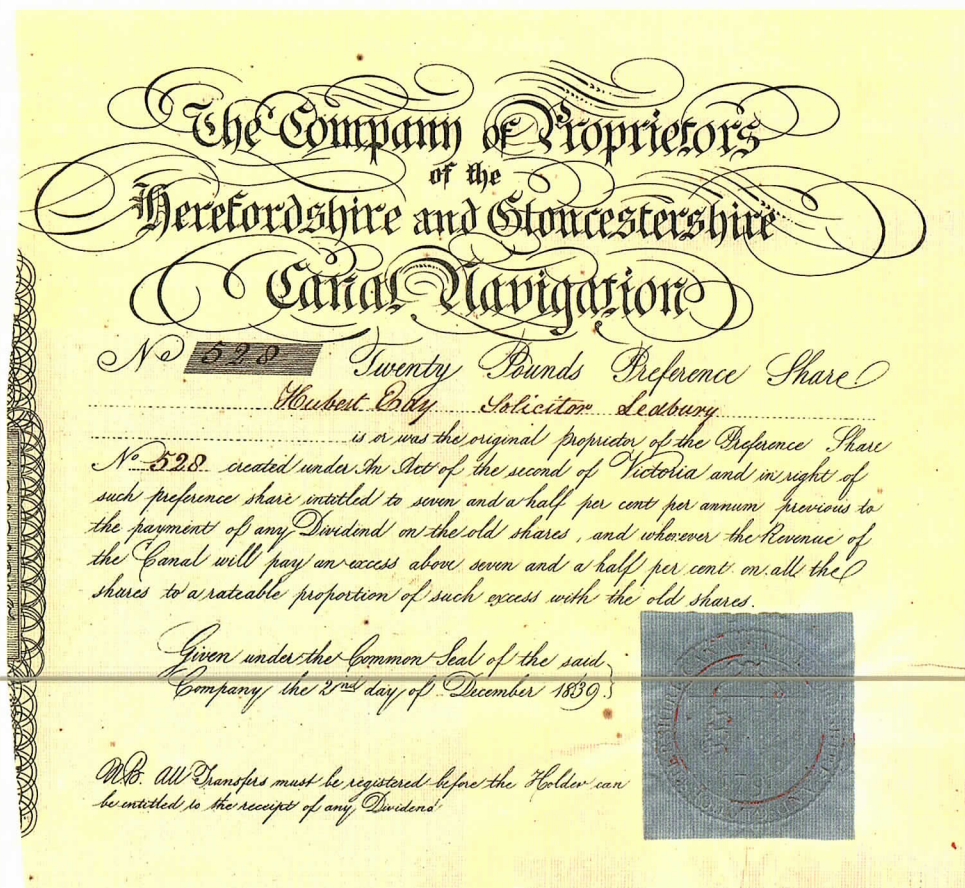
## Herefordshire & Gloucestershire Canal Navigation Share Certificates

The construction of the Herefordshire and Gloucestershire Canal Navigation was largely financed by the sale of share certificates.

In March 1790 a subscription for £100 share certificates was opened.

The 1791 Act of Parliament which gave the Company the power to buy the land and construct the canal, included a list of 110 shareholders and authorised a capital

of £75,000, with powers to raise a further £30,000. The addition of a further £4,000 enabled the Canal to be built just short of Ledbury, the halfway town.





In May 1839, the construction of the Canal from Ledbury to Hereford was financed by another Act of Parliament, which enabled the Company to raise £50,000 by mortgage and £45,000 by a second issue of 2,250 £20 preference share certificates.

### ***So where are the certificates today? Nigel continues ...***

From time to time these certificates resurface. An instance of this was at the end of last year when at Spink & Son, auctioneers in London on the 29th November, 2017, three Herefordshire & Gloucestershire Canal Navigation Company share certificates were offered for auction.

Lot 240 was a 1793 first issue certificate number 471, originally owned by William Money Esquire, of Much Marcle in the County of Hereford. The estimate was £200 – £250, however it failed to sell, even when it was offered at £150, perhaps because the seal in particular, was in poor condition.

Lot 241 was a 1839 second issue certificate number 528, originally owned by Hubert Edy, Solicitor, Ledbury. The estimate was £150 – £200. It is in good condition, with an unusual blue coloured seal.

Lot 242 was a 1839 second issue certificate number 2002, originally owned by Thomas Baylis, Tanner, Ledbury. It is in good condition.

I considered bidding by telephone or the internet, but since James Dunn wanted to attend the auction he bought Lot 241 on my behalf. >>> **NJ**

## **Hubert EDY 1806 - 1849**

The original owner of the Herefordshire & Gloucestershire Canal Navigation, 1839, Second Issue Share Certificate Number 528.

**1806** Hubert was born on the 21st June, he was the only son of Ann and John Edy and was baptised on the 23rd July.

**1831** Hubert Edy and James Gregg are recorded as solicitors at the Homend, Ledbury.

**1839** Hubert was one of the 18 Committee members who campaigned for the completion of the Herefordshire and Gloucestershire Canal Navigation. In his diary entry for March 25th, Stephen Ballard records “Hubert Edy went to the House of Commons, he said Lord Shaftesbury opposed the Act. The old arbitrary rascal would give no reason for this unreasonable proceeding and we were informed that there would be no chance of success if we were to attempt to get an act passed without his approval. Thus it is this one man, an hereditary legislator, has the power to stop a public work without assigning any reason for it.”

**1840** In Pigot's Commercial Directory of Herefordshire, Hubert Edy is recorded as a Solicitor and Fire and Life Assurance Agent of Homend Street, Ledbury.

**1841** In the Census he is recorded as living in Ledbury; Margaret Jay aged about 40 is resident at the same address and was probably his house-keeper. There is no record of him having married.

**1849** In the Hereford Registrar's Index he is recorded as having died on the 24th September in Ledbury, aged only 43. In the Hereford Times newspaper of Saturday, September 29th, in the Local News section under Deaths is recorded “24, at the Frith, Ledbury, aged 43, Hubert Edy, Esq., solicitor.” Frith or the Frith is situated to the north of Ledbury, near Wellington Heath.

**1855** Hubert's father John died, aged 88.

Research by N. C. Jefferies December 2017



# WINTER BAZAAR



*Pat Skeet reports*

Once again this event proved to be very popular and successful. There was a lovely atmosphere with everybody working happily all day. A wartime-type spirit prevailed, with the cold being the common enemy! As a consequence we did a huge trade in piping hot soup and sumptuous cakes with hot drinks. The hall was still cold despite the heating but folks were very understanding.

The planning for this event had been fraught, as the venue owners changed our date for us. The new date meant that four regular helpers couldn't come and only half the usual stallholders. Luckily four new volunteers came and new stallholders booked. One unexpected advantage was that it turned out to be Ledbury's "Christmas Saturday" with free parking all day and many more people around!

The traders displayed a large variety of lovely, mostly home-made, wares, which covered a wide range – wooden items, jewellery, beaded goods, glassware, cards, knitted, sewn and crocheted things, willow ware, second hand books and postcards, canalware, interesting preserves and lovely National Trust goods suitable for Christmas presents. A veritable Christmas shopping one-stop haven! No visitor needed to go away empty-handed.

We had a Trust sales stand and displays as usual and they generated a lot of interest in the canal restoration. Some of our members talked about the canal non-stop all day. That has to be useful to the Trust.

My very grateful thanks go out to the large number of people who helped to make the day so successful, by working so hard in a variety of ways, both before and on the day.







Our Christmas hamper was won by a lovely young family from Hereford, who had only bought their tickets five minutes before the draw. Because of that they said they "didn't deserve it"! We assured them they did. We gained the family's interest in the canal and they gained a wonderful hamper.

*We hope to see you all again on 10 November this year!* >>> **PS**



**Travels**  
with the  
**Trust Stand**

by Janet Moulton and Maggie Jones

## Why not have a good day out with the H&G CT?

The Sales and Promotion teams are expecting to attend a number of events this year.

*This is the list so far....*

May 5	Droitwich Boat Festival, Worcestershire
June 9	Ledbury Community Day
June 9-10	Hellens Garden Festival, Herefordshire
June 23-24	Historic Narrowboat Rally, Braunston, Northamptonshire
August 18-19	Tibberton Show
Nov.10	H&G CT Winter Bazaar, Ledbury

We welcome additional volunteers to help promote the Canal; no experience necessary – just come and be part of our team – we will do our best to put you at ease and to find a task that you will enjoy. Your admission to the event will be free and we always try to ensure that you have some time to look around.

We would like to attend other local shows so if you know of any please talk to Janet or Maggie. >>> **JM/MJ**

**Please note, Over Festival is having a year's rest but it is planned to be back June 2019.**



# News from the Friends of National Waterways Museum Gloucester

by Norman Mitchell

Happy New Year to everyone.

2018 starts with the construction of the new Museum entrance. This means the Museum will be closed for the duration of the build.

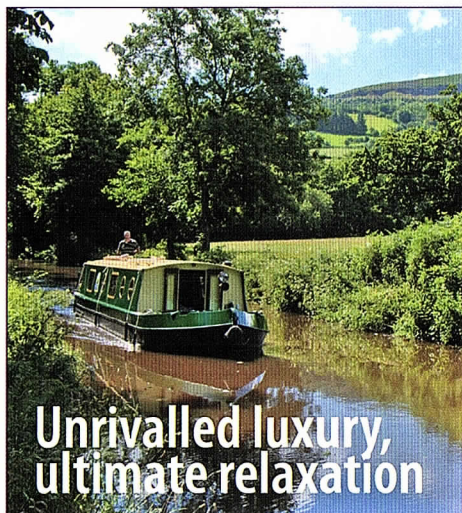
The anticipated completion date is Friday 27 April, though it may be a little earlier.

During the closure the Museum will be running boat trips from 24 March with access to Reception via the side doors next to the narrowboat Northwich.

We look forward to returning to normal in the near future when the HLF Project is complete.

» **NM**

Chairman FGWM



Unwind however you choose, and for as long as you like, in the splendour of the Brecon Beacons on the Monmouthshire and Brecon Canal.

To know more: 01873 858277

[www.beaconparkboats.com](http://www.beaconparkboats.com)

## THE OAK INN Staplow HR8 1NP 01531 640954



A VERY WARM WELCOME AWAITS YOU AT OUR NEWLY REFURBISHED INN  
OPEN FOR LUNCH AND DINNER EVERY DAY IN OUR COSY BAR AREAS OR RESTAURANT  
GOOD SELECTION OF REAL ALES - GOOD BEER GUIDE 2009 & 2010

REAL LOG FIRES, FLAGSTONE FLOORS, OLD BEAMS & HOPS  
PRETTY BEER GARDEN ~ PARTIES CATERED FOR ~ DOG FRIENDLY  
THE ONLY PUB IN HEREFORDSHIRE THAT ABUTS THE LINE OF  
THE HEREFORD AND GLOUCESTER CANAL

FOUR EN-SUITE B&B ROOMS NOW AVAILABLE  
[www.oakinnstaplow.co.uk](http://www.oakinnstaplow.co.uk)





# Congratulations Eamonn!

One of H&G CT's newest Trustees, Eamonn McGurk, has been granted one of the UK's oldest honours, the Freedom of the City of London.

As managing director of Gloucester-based Keyway, one of the biggest construction equipment hire companies, Eamonn employs more than 900 people and owns Gloucester City Football Club, and has been particularly active in London over the last decade in both business and supporting charitable activities.

Eamonn joins a distinguished list of Freemen including Sir Winston Churchill, Princess Diana, Nelson Mandela and Michael Caine. He received the Freedom of the City of London in a ceremony at the capital's Guildhall at the end of last year, presided over by Murray Craig, who is only the 37th clerk since the tradition began in 1294.



**Eamonn said:** "It's an absolute honour to receive this award. Signing the register and listening to Murray Craig's beautiful rendition of the origin and history of the Freedom of the City is a memory to cherish. It is a fantastic privileged to be part of an award that goes back to the 13th century. We have been doing a lot of work in London over the last ten years."

stationery • leaflets • mailers • posters • folders • programmes • newsletters • brochures • prospectuses • calendars • magazines • books • exhibition panels

# PRINT PLUS

## 01432 272025



126 Widemarsh Street • Hereford HR4 9HN  
Fax: 01432 353962 • Email: [enquiries@printplushereford.co.uk](mailto:enquiries@printplushereford.co.uk)

[www.printplushereford.co.uk](http://www.printplushereford.co.uk)

always delivering quality







# MOAT CONTRACTING

GROUNDWORK SPECIALISTS



***Large enough to deliver. Small enough to care.***

**07887 544 400**

**moatcontracting@aol.co.uk**





Last time I wrote, I said there was a "nip in the air", and as I write this time it feels very arctic, with -9°C on our outside thermometer. We have had a good run with the weather this summer past, so no complaints and our last event was the annual "Beans on Toast" with simple competitions and the weather was glorious, sadly our club members did not support us very well, a problem with many clubs these days.

It is our intention sometime late January or early February to make barley straw 'sausages' as we did two years ago and lay them out round the canal to control algae pollution as this seems to be a very environmentally friendly way of doing it.

When visiting the H&G CT's Winter Bazaar in Ledbury I was shown a picture of a special icebreaker, designed, I think, by Ballard, which basically lifted the ice to break it. This is far better than the rocking boat method which must have been hard work and costly in labour, or the method designed by William Symington, to fit on a tug, Charlotte Dundas, which had steam powered rods bashing the ice down. In fact the Russians are, I believe, experimenting with some large high speed submarines where the bow wave, not the sub, lifts and shatters the ice. Maybe we could persuade one of our submarine building modelers to have a go, but probably no volunteers for this. So until it gets warmer the only sailors will be those with Florida style airboats or hovercraft.

### Gloucester & District Model Boat Club

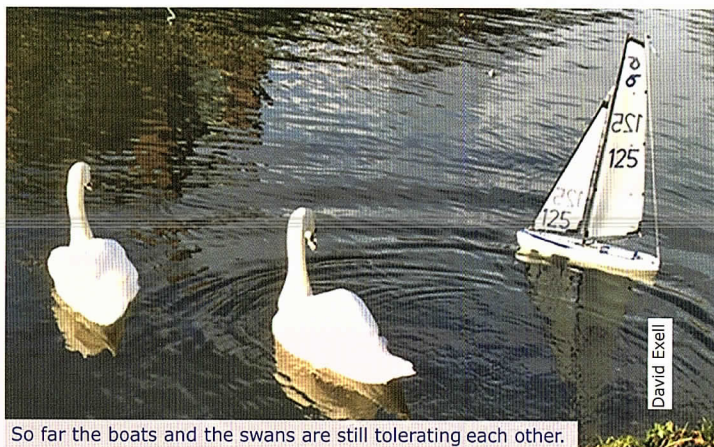
Sails at Over basin on Wednesday, Friday and Sunday afternoons (weather permitting). You should find somebody sailing between 1.00pm and 4.00pm. The Club members will be pleased to talk to you about their models and the Club. Members have models of all descriptions including amphibious craft. Yachts are very popular.

*Chairman. Edward Tedaldi.*

However, since writing the above the weather has warmed up a bit, so now we are back sailing on the canal. One of the most interesting "prizes" of the club is the "Titanic" trophy for the most spectacular sinking of a model boat. D....y (*who does not wish to be named*) was an early entrant when he managed to hit a real piece of ice just like the real Titanic but a committee of onlookers disallowed his entry as he merely ended up on the ice and not sinking properly.

I was intrigued to see our swan pair back but surprised that two of their young came back with them, I thought the last trip with Mum and Dad was a one way trip, does the term 'empty nester' mean nothing to swans?

»» **DE**



So far the boats and the swans are still tolerating each other.

David Exell



# KEYWAY

NATIONWIDE PLANT RENTAL



Over 50 years experience  
Quick response time  
Extensive fleet of latest equipment



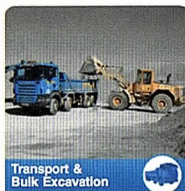
With more than £7m invested annually and a fleet of 1000, Keyway offers the most comprehensive range of equipment and support services for our customers and operators.



**Welcome to the Keyway Group** – *Extensive range of equipment, personal customer care*



Nationwide Plant Rental



Transport & Bulk Excavation



Recycling & Aggregates



Skip Hire



Plant Sales



Keyway provides a complete recycling and waste management service to the construction and demolition industry operating a fleet of specialist vehicles within the south west region.

We seek to provide value for money and improved environmental solutions for all our customer needs. [www.keyway.co.uk](http://www.keyway.co.uk)



UK CONSTRUCTION RECRUITMENT is a leading employment agency specialising in the supply of temporary construction staff for the built environment. [www.ukcr.co.uk](http://www.ukcr.co.uk)

## NATIONWIDE STONE SUPPLIES



NATIONWIDE STONE SUPPLIES specialises in providing all of your aggregate solutions no matter the size and scale of your project. [www.nationwidestonesupplies.co.uk](http://www.nationwidestonesupplies.co.uk)

For further information please contact us on  
T: 0845 241 81 81 | E: [plant@keyway.co.uk](mailto:plant@keyway.co.uk) | [www.keyway.co.uk](http://www.keyway.co.uk)





Santa visits us at Over!

Well, that's that over, another Christmas and a year gone, I can't wait for next Christmas, but I promise to get the flu jab this year.

Some of our regular clients have mentioned the fact that the pontoon is rather 'unstable'. Well the good news is that after a rest at Oxenhall, the other part has been returned in a safe and sound condition, so the stability has improved. Thanks for the safe return. Another word of gratitude is to be bestowed on the Model Boat Club who made a donation of £100 to our cause for loan of our Wheelyboat and driver to help them clear weed from the banks.

2017 has flown by, with most Tuesdays seeing from occasionally five, but more often, up to 35 people joining us, and only losing two days through ice. Once again Father Christmas made a detour to "Over" just a pity not many people saw the notices, but those who did managed to eat 96 sausage rolls and nearly as many mince pies. Santa welcomed the children but was a little disappointed there was no sherry!

A Christmas dinner was held at Toby Carvery Brockworth with our sister group Friends of Disabled Skittlers, then a client's party at Wotton Hall the following week, so lots of festive celebration.

This year in June we have been invited to promote the Wheelyboat and the Katakonus to a Disabled sailing weekend at Llangorse Sailing Club, but don't worry – we're not leaving!

»» PB

**Sailing4Disabled** meets every Tuesday at **Over Canal Basin** from 11.00 to 14.00. It is open to everyone – whether they have a disability or not. Contact: Pete (Long Gone Silver) Bisson: on 07913 015018 • peterwb49@hotmail.com • www.sailing4disabled.org.uk

## Useless facts for 2017!

**Client use:** Over 600 visits by a mix of disabled/able-bodied people, with 579 recorded as having been on the water with our help.

**Volunteers:** 7 full time volunteers

**Coffee:** 15 rather large jars have been consumed.

**Tea Bags:** 669 tea bags. (only 2 recycled, I forgot to replenish our supply)

**Sugar:** 3 Kg + 1 Tube of sweeteners (for the volunteers)

**Milk:** 49 bottles (half fat)

**Food:** 960 Swedish style meat balls, + onions, peppers, potatoes, green veg, and other root veg (*but now I've told you that, they may not eat it anymore*) 320 pork sausages and 10 packs of bacon (18 slices per pack) 100 loaves of 50/50 bread + low fat spread.

**Cakes:** 109 cakes and umpteen rock cakes.

**... and we still had time for sailing on the water!**





# Everything Canal Boats

*Services from 10 marinas in the UK and  
boating holidays from 16 locations.*

- Boating Holidays
- Boat Sales
- Day Boat Hire
- Boat Builders
- Chandlery & Repairs
- Marina Services
- Moorings
- Canalside Holiday Cottages



The Inland  
Waterways  
Association



Scan Me

[www.everythingcanalboats.com](http://www.everythingcanalboats.com)

Call Us: 0330 333 0595



## Snow brought the roof down!

Sadly, the large marquee at Malswick House was damaged in the bad weather before Christmas and is now subject to a total loss claim. We are not allowed to touch it and clear up until this has been processed. The marquee has hosted a wide range of events from wedding receptions to meetings and music events. Damage was limited to the marquee and contents and has not affected the operation of the premises.



**Thank you to all who have sent in stamps. Please keep them coming.**

Please save all the stamps from your Christmas card envelopes. Stamps, albums, old postcards, in fact anything vaguely philatelic, can be turned into cash for the Trust. The next target is to pass the £3,000 mark of money raised in this way so we need everything stampwise that you can send us please. Stamps can be taken to a Social Evening or other H&G CT event – or to The Wharf House or Malswick House. Or send them direct to:- H&G Stamps, c/o Steve Bence, 35 Lime Road, Southam, Warwickshire, CV47 1EQ.

**Thank you »» SB**



The Inland  
Waterways  
Association

**Gloucestershire  
& Herefordshire  
IWA Branch**

### 2018 Annual General Meeting

**Thursday 1 March 7.30pm**

Non members are welcome.

**The Warehouse, Parliament Street, GL1 1HY**

Free parking at the Docks, Southgate St. and St Micheals Square, Brunswick Road, from 6pm

**Further details contact: Roger Holmes**  
email: rogervectis@aol.com 01594 840 316

*not quite* ... **the last page!**

## The **Wharfinger**

**The Wharfinger** is pleased to welcome two new volunteers to the production team.

Firstly, Pat Bugler has joined Janet and Becca Moulton in the proofreading team.

The second new Member to the team is Ginny Birkett. Ginny is taking on responsibility for the advertising. Having a good selection of advertisements both local and waterways-linked helps us to keep the costs down in the magazine's production. So if you wish to advertise, Ginny is the person to contact.

*Thank you to all the team »» MJ*

### Advertising in **The Wharfinger**

Show the support of your business by advertising in *The Wharfinger*. Rates from £39 per issue and we will gladly design your advertisement free of charge. Please contact: **Ginny Burkett**

**01531 820345** or email: [vmb@cadbloke.co.uk](mailto:vmb@cadbloke.co.uk)

#### Page List of Advertisers:

- 34 Beacon Park Boats
- 2 Beta Marine
- 36 Braunston Brokerage/Marina
- 4 Canal Contracting  
(River Canal Rescue)
- 34 Everything Canal Boats
- 23 Geoffrey Urch Garden Services
- 4 Gloucester Quays
- 13 E.B Hayward & Co Ltd.
- 32 Keyway
- 1 Malswick House
- 6 Midwinter Transport
- 30 Moat Contracting
- 29 Print Plus
- 28 The Oak Inn, Staplow
- 8 The Wharf House

**Please support our advertisers –  
SUPPORT OUR SUPPORTERS**

Copy deadline for the next issue  
**MONDAY, 2 APRIL**



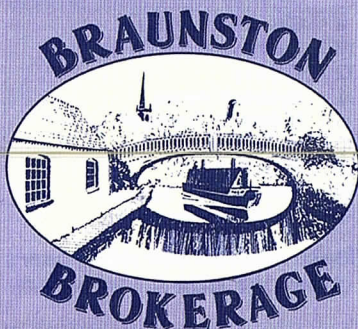
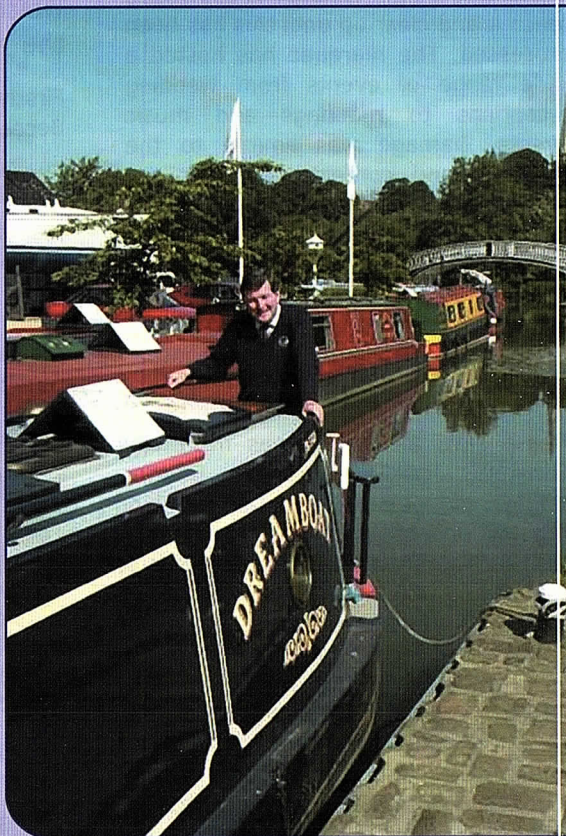
# *Buying or selling your DREAMBOAT?*

*Then make Braunston Brokerage  
– at the heart of England's  
waterways – your first port of call!*

*Established in 1988, we are  
a major player in the selling  
of narrowboats – new and  
secondhand – with a  
reputation for professionalism  
that is second to none.*

*Our marina offers the fullest  
range of support services.  
Uniquely, we have two dry  
docks on-site for surveys,  
hull-blackening, repainting, sign-  
writing and below waterline  
repairs. Also engineering and  
refit facilities.*

*Sell your Dreamboat  
where it will be seen!*



For full information – including our  
competitive brokerage package –  
contact Tim Coghlan at:

Braunston Marina Limited, Braunston,  
Nr Daventry, Northants NN11 7JH  
Telephone 01788 891373  
Fax 01788 891436

Website: [www.braunstonmarina.co.uk](http://www.braunstonmarina.co.uk)  
Email: [sales@braunstonmarina.co.uk](mailto:sales@braunstonmarina.co.uk)



## Contact details...

**Vaughan Welch** – Chairman

0121 477 9782 chairman@h-g-canal.org

**Roger Holmes** – Treasurer

01594 840 316 accounts@h-g-canal.org

**David Penny** – Commercial & Technical Director

01452 332 900 david@thewharfhouse.co.uk

**Nigel Jefferies** – Membership Secretary

Two Hollylea Close, Bartestree, Hereford, HR1 4DN

01432 850 661 membership@h-g-canal.org

**Janet Moulton** – Mail Order Sales & Promotion

18, Coningsby Court, Coningsby Street, Hereford, HR1 2DF

01432 264 366 mailorder@h-g-canal.org

**Maggie Jones** – The Wharfinger Editor/ Sales & Promotion

01452 618 010 editor@h-g-canal.org

**John Pritchard** – Health & Safety/Hereford Roving Team

01432 272972 healthsafety@h-g-canal.org

**Caroline Jones** – Fund Raising

01594 332 900 fundraising@h-g-canal.org

**Caroline Buffery** – Company Secretary

01452 332 900 caroline@thewharfhouse.co.uk

**Tony Sellwood** – Major Projects – Operations Director

01452 830 586 majorprojects@h-g-canal.org

**Wilf Jones** – Restoration and Maintenance

01452 413 888 maintenance@h-g-canal.org

**Ted Beagles** – Over Site Leader

01452 522 648 overbasin@h-g-canal.org

**Brian Fox** – Oxenhall Site Leader

01432 358 628 oxenhall@h-g-canal.org

**Paul Henshaw** – Malswick Site Leader

01684 293 930 malswick@h-g-canal.org

**Chris High** – Yarkhill Site Leader

01568 615 575 yarkhill@h-g-canal.org

**Legal & Project Development Team**

01452 332 900 lpdt@thewharfhouse.co.uk

**General enquiries:** information@h-g-canal.org.uk

## Want to help?

The Canal Trust is always in need of new volunteers as our activities continue to expand. We can normally find a use for any skill from gardeners to first aiders, brickies to those willing to help with a shovel, pen or laptop. The H&G CT also welcomes offers of gifts of good quality used tools and machinery from those who no longer need or cannot use it.

## Want to join?

Please support our voluntary work by becoming a Member of the H&G CT. A membership form is available online or from The Wharf House.

### H&G CT UK Membership Rates

	Annual	Life
Individual	£10	£200
Joint/Family	£15	£300
Senior Citizen	£7.50	£115
Joint Senior Citizen	£10	£150
Corporate	£25	£500

PLEASE NOTE: All subscriptions and donations are treated as being made under the Gift Aid scheme unless you state that you do not wish us to do this. Payment made by Standing Order greatly assists us and payment remains under your control. All payments to:

H&G CT, 6, Castle Street, Hereford, HR1 2NL

## Visit our websites:



**www.h-g-canal.org.uk**

THE WHARF HOUSE

**www.thewharfhouse.co.uk**

MALSWICK HOUSE

**www.malswickhouse.co.uk**



**'Like us'**

**on Facebook**

[www.facebook.com/hgcanaltrust](http://www.facebook.com/hgcanaltrust)

[www.facebook.com/TheWharfHouse](http://www.facebook.com/TheWharfHouse)

[www.facebook.com/malswickhouse](http://www.facebook.com/malswickhouse)

Unless specifically stated opinions expressed are those of the author and do not necessarily reflect the policy of the Herefordshire & Gloucestershire Canal Trust. As a Registered Charity, with defined objectives, we cannot endorse the content of any specific advertisement, product or services. The Trust accepts no liability for any matter, or advertising, contained in this magazine. Reproduction of extracts from the magazine is welcomed provided that full acknowledgement is given.

Membership records are computerised. Your entry is available for inspection if you send a SAE to the Membership Secretary.

We try to ensure details of talks/events are correct – please verify with the relevant organiser if travelling long distances.

© 2018 Published by the Herefordshire & Gloucestershire Canal Trust.

The Wharf House Company Ltd [No. 4627931] is part of the Herefordshire & Gloucestershire Canal Trust Ltd group of companies. The Herefordshire & Gloucestershire Canal Trust is a non-profit distributing company limited by guarantee [No. 2704407] and is a registered charity [No. 1010721].

Registered Office: The Wharf House, Over Canal Basin, Over, Gloucester, GL2 8DB.



## Hereford

Our objective is to rebuild the 34 mile Canal linking the centre of Hereford to Gloucester and its connection with the 2,500 mile inland waterway network. We have major restoration sites in each county, together extending to some 4 miles. The intention is to provide a financially sustainable independent Canal which does not require regular financial support from public bodies for its future operation and maintenance.

## The H&G Canal Trust

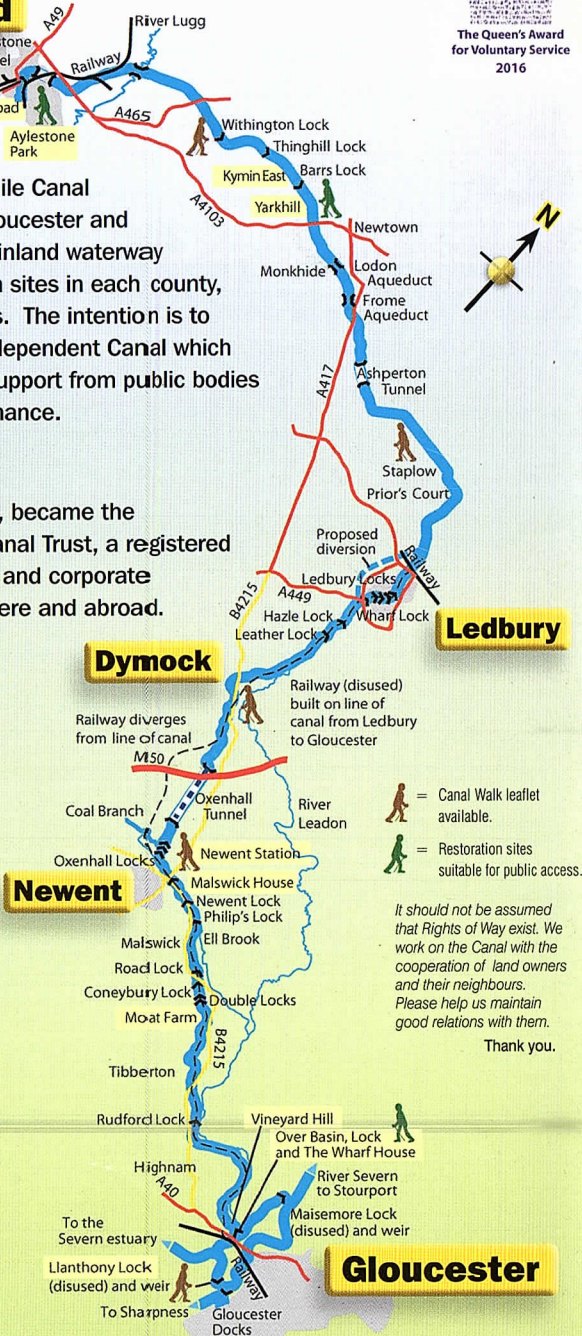
The Canal Society, formed in 1983, became the Herefordshire & Gloucestershire Canal Trust, a registered charity, in 1992. It has an ordinary and corporate membership approaching 1,400, here and abroad.

## The original Herefordshire & Gloucestershire Canal

Work started in 1792 reaching Ledbury from Gloucester by 1798. In 1827 Steven Ballard was appointed to oversee the Canal's completion, which reached Hereford in 1845; this was one of the last major canal routes completed in Britain. The Canal stretched from the River Severn at Gloucester, via Newent, Dymock and Ledbury to Hereford, using 22 locks and 3 tunnels. It was closed in 1881 to allow construction of the Ledbury-Gloucester railway which in turn closed in 1964.

## Gloucester Quays

Experience More



Map based on original by Martin Ludgate, Canal Boat Magazine.