

£1 free to members

Winter 2018-2019

The Wharfinger

HEREFORDSHIRE & GLOUCESTERSHIRE CANAL TRUST



138
EDITION

REBUILDING A SUSTAINABLE CANAL BETWEEN HEREFORD & GLOUCESTER

Working together in the present to revive the past and secure a better future.®

HEREFORDSHIRE & GLOUCESTERSHIRE CANAL TRUST

Working *together* in the present to revive the past and secure a better future.®

Who does what? ...

To get in touch see "Contacts" inside the back cover.

Honorary Life Presidents:

Janet Moulton, Cliff Penny

Vice Presidents:

R. E. Barnes TD, Richard Graham MP, Mark Harper MP,
Duff Hart-Davis, James Hervey-Bathurst CBE DL,
Sir John Lushington Bt, Jesse Norman MP,
Diana Organ, Tim Parker, Bill Wiggan MP

Board of Trustees

Chairman: Vaughan Welch,

Vice-Chairman: John Kilpatrick

Board: Ralph Barber, Roger Holmes,
Nigel Jefferies, Maggie Jones, Philip Marshall,
Eamonn McGurk, David Penny

Company Secretary: Dr Caroline Buffery,

Treasurer: Roger Holmes

Accounts Examiners: Griffiths Marshall, Gloucester

Corporate Governance Working Group

Nigel Johnson, Dr Caroline Buffery, Nigel Jefferies,
Vaughan Welch

Health & Safety

David Penny, Vaughan Welch (*temporary positions*)
Hereford & Gloucester Construction Safety Assoc.

Fundraising

Co-ordinator: Caroline Jones, L&PDT

Restoration & Maintenance Teams

Chairman: Wilf Jones

Hereford Roving Team: John Pritchard

Kymin East: Ralph Barber

Yarkhill: Chris High

Dymock: Wilf Jones

Oxenhall: Brian Fox, Geoff Hopper

Moat Farm: Wilf Jones

Over and Vineyard Hill: Ted Beagles

Major Projects Teams

Malswick Project: Tony Sellwood, Paul Henshaw,
John Pritchard, David Penny, Wilf Jones

Newent Station Project: Tony Sellwood, Mike
Harris, David Penny, Wilf Jones, David Gregory

Mill Barn Project: David Penny, Ted Beagles,
Caroline Jones, Roger Holmes
Architects: Roberts Limbrick

Membership Services

Secretary: Nigel Jefferies,

Gift Aid: Janet Moulton

Press Liaison The Wharf House

H&G Canal Sales & Promotion

Co-ordinator: Maggie Jones

Hereford Roving Team: Janet Moulton, Barbara
Moses, Ray Moses, Penny Shetliffe, Pat Skeet,
Heather Worth

Gloucester Roving Team: Ginny Birkett, Maggie
Jones

The Wharfinger

Editor: Maggie Jones

Design/Production: Maggie Jones

Proofreading: Becca Moulton, Janet Moulton, Amy Bugler

Advertising: Ginny Birkett

Distribution: Janet Moulton

Digital Photo Library: Colin Dymott

Website Development

Team Leader: Maggie Jones,

Web Master: Nick Dymott,

Committee: Ted Beagles

Social Events

Organiser: Janet Moulton, Support: Nigel Jefferies,
Stephen and Gillian Chowns

Talks and Walks

Co-ordinator: Nigel Jefferies

Dick Skeet, Ted Beagles

The Wharf House Company Limited

Over, Gloucester, GL2 8DB. 01452 332 900

www.thewharfhouse.co.uk

Directors: Ralph Barber, John Kilpatrick, Philip
Marshall, Eamonn McGurk,

Company Secretary: Dr Caroline Buffery

Bookkeeper: Debbie Royston

Accounts Examiners: Griffiths Marshall, Gloucester

Legal & Project Development Team

Commercial & Technical Director: David Penny

L&P Development Officer: Dr Caroline Buffery

Legal: Nigel Johnson

Legal Advice: Roz Rutter, Simon Freeman,
No.5 Chambers

Planning Consultant: Green Planning Studio

Engineering: Thomas Ashworth, Tony Gee & Partners

Delivery co-ordination: Tony Sellwood, Wilf Jones

THE WHARF HOUSE & MALSWICK HOUSE

Manager: David Penny

Events & Customer Relations: Ellie Woodrow,
Georgie Freeman

All profits from The Wharf House and Malswick House will be used for
the promotion and restoration of the Hereford & Gloucester Canal.

Contents

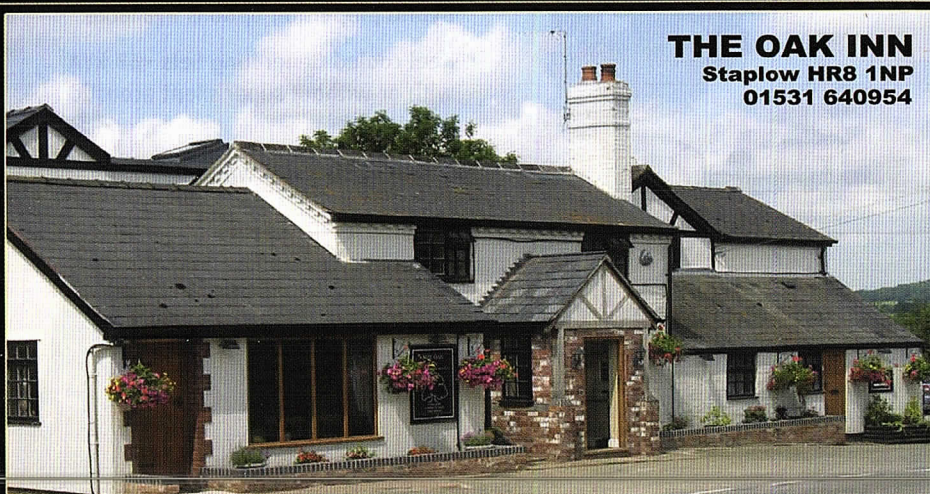
page

- 3** Editorial: Remembering our strapline and motto
- 4** Annual General Meeting Report
- 6** Projects in progress: Malswick
- 12** Health & Safety Officer
- 13** Fundraising
- 14** Wellies Fargo Volunteer Experience
- 16** A Second Rosette for The Wharf House
- 16** The Wharf House launches Vegan Tasting Menu
- 17** Gift ideas from The Wharf House
- 18** Grand Holiday Draw 2018 results
- 19** Social Evenings at The Royal Oak
- 20** Volunteer Focus
- 23** Leaving a gift in your Will
- 24** Site News roundup! Over

*We wish all our
Readers a Happy,
Healthy Christmas and
a Prosperous 2019*

- 26** Site News roundup! Kymin East
- 27** Site News roundup! Oxenhall & Newent
- 28** Travels with the Trust Stand: Tibberton Show and Newent Onion Fayre
- 31** Gloucester Model Boat Club
- 33** Sailing4Disabled
- 34** News from the National Waterways Museum Gloucester
- 35** Nature Watch: Over Basin Swans
- 35** Advertising in *The Wharfinger*

Cover image: Wells Fargo and H&G CT Volunteers outside Malswick House. – Brian Fox




THE OAK INN
Staplow HR8 1NP
01531 640954

**A VERY WARM WELCOME AWAITS YOU AT OUR NEWLY REFURBISHED INN
OPEN FOR LUNCH AND DINNER EVERY DAY IN OUR COSY BAR AREAS OR RESTAURANT
GOOD SELECTION OF REAL ALES - GOOD BEER GUIDE 2009 & 2010**

**REAL LOG FIRES, FLAGSTONE FLOORS, OLD BEAMS & HOPS
PRETTY BEER GARDEN ~ PARTIES CATERED FOR ~ DOG FRIENDLY
THE ONLY PUB IN HEREFORDSHIRE THAT ABUTS THE LINE OF
THE HEREFORD AND GLOUCESTER CANAL**

FOUR EN-SUITE B&B ROOMS NOW AVAILABLE
www.oakinnstaplow.co.uk

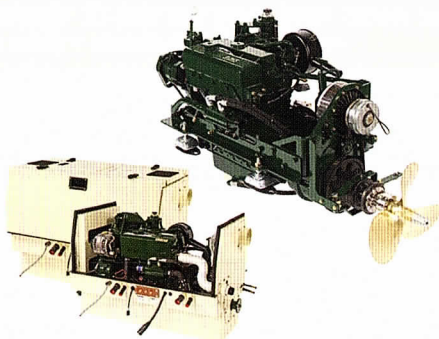
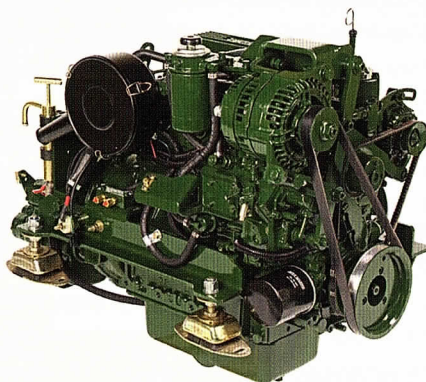


Your needs . . .

BETA MARINE

Seagoing Saildrives Inland Waterways Marine Generating Sets Spares & Support

- 30 years of customer centred focus, listening to needs & delivering long term value solutions.
- Specialists in customer advice & support at all points of a products voyage.
- Superb after-sales service via our network of approved engine installers and service centres.
- Extensive range of 14 to 98 HP keel cooled propulsion engines with mechanical or hydraulic gearboxes.



- Super silent acoustic housings, 3.5 or 5.0 kVA travel power, bow thrusters and hybrid propulsion options available.
- Keel cooled Generating Sets <58 kVA with or without super silent acoustic housings.
- 5 year self-service warranty.

. . . our tailored solutions
delivering reliability and peace of mind

BETA MARINE

www.betamarine.co.uk

Tel: +44 (0)1452 723492 Email: sales@betamarine.co.uk



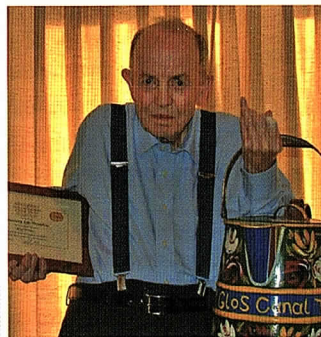
Remembering our strapline and motto

Rebuilding a **sustainable** Canal between Hereford & Gloucester.

The crucial word in the strapline is **sustainable**. Our work to ensure that there is an income stream to enable us to maintain the Canal as each piece is restored, is the essential in all we do. It is a feature of our restoration that sets us apart from similar waterways organisations. Now others are seeing the logic in our approach and are following our lead. Indeed, they consult our Legal & Planning Development Team on ways that they too, might achieve sustainability to ensure the future of our waterways nationally.

We are a small organisation with big ambitions. The income stream from *The Wharf House Company* enables us to maintain the Over Basin and other places. Our rented properties, covenants and similar funding projects deliver some £55k a year, offering a firm financial foundation on which we can support the restored Canal. Once the Canal is completed alongside *Malswick House*, it too will be a key focus for visitors in the area; offering a friendly country inn with good food and a lovely waterside walk.

Our Volunteers have put a tremendous effort into the building of these enterprises that can appear to be a very long way from canal restoration. Our Volunteers understand the logic in building this income stream so that ultimately, we will have a great community resource that visitors and the local population can all enjoy.



Working together in the present to revive the past and secure a better future.

Cliff Penny reminded us all of our motto when he was presented with his Certificate and a Buckby Can, as an Honorary Life President at the recent AGM.

The award was much deserved. Cliff is not a well man but he made the effort, supported by wife, Joan, to attend the beginning of the evening. Cliff has served many years as Trustee, he has been a great advisor to the Board over the years using his extensive professional skills. Despite his frailty, he spoke very clearly of the importance of **working together**.

We are all Volunteers working very hard to deliver this canal. We all use our skills to the best of our abilities and give many hours to further the restoration. As you read through this magazine you will see countless examples of how, as Volunteers, we are managing to achieve some amazing work, in all aspects. There are times when this work is not straightforward, there are problems and issues that cause us to work harder to solve, but in the end, we get there. Within H&GCT there is no such word as 'problem', only 'challenges' that we must overcome.

The respect and credibility that we have won over the years, locally and nationally, is because of this tenacity that we have shown. We must continue to build on it and remember it is only by **working together** in the present to revive the past, that we can secure a better sustainable future along the whole length of the Canal in which local communities in both counties can take a pride.

Thank you >>> MJ



Annual General Meeting *Report*

Chairman, Vaughan Welch, welcomed all attendees to the meeting. There were 63 Members present and two guests.

The chairman noted that, since the last AGM when there was the election of a full board of 10, several people have retired. Special mention was made of Paul Hatt, a long standing Member of the Trust, who sadly passed away in the New Year. A minute's silence was held in his memory.

A tribute and a presentation was held to honour founder Member Cliff Penny on being made a Honorary Life President of the Trust and he was presented with a Commemorative Buckby Can. Cliff gave a thank you speech recalling his many years in the Trust, and asked that people worked together to continue the good work of the H&GCT.

The Chairmen went on to give a resume of projects and work during the year.

Adjournment of the AGM

Although much of the business was completed at this meeting, the accounts were not available so item 5, the financial report, could not be approved.

Roger Holmes, Treasurer, apologised on behalf of the Board of Trustees for not being able to present the accounts at the meeting – although the Trust accounts were ready, The Wharf House accounts were not. This led to a number of questions from the floor as to why the accounts were not ready and a heated debate followed.

Vaughan Welch, Chairman, brought the questions to a close and requested a date be set for the presentation of the accounts at a reconvened meeting. It was decided that the meeting would be held on Thursday, 13 December 2018.



THE HEREFORDSHIRE & GLOUCESTERSHIRE CANAL TRUST

2018 RECONVENED ANNUAL GENERAL MEETING

Thursday 13 December 2018 at 7.30pm

at Ledbury Community Hall.
Lawnside Road, Ledbury, , HR8 2AE

Agenda

1. Welcome
2. Apologies for absence
3. To receive and approve the financial statements for the year ending 28 February 2018.
4. Close of formal business.

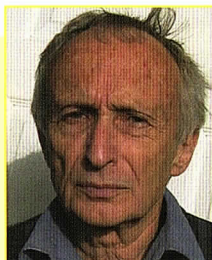


Ledbury Community Hall



Location of
Ledbury
Community Hall

Meet the New Board



Vaughan Welch
Chairman



John Kilpatrick
Vice Chairman
The Wharf House Director



Roger Holmes
Treasurer

Election of the New Board

Eamonn McGurk, who had agreed to stand by rotation, was welcomed back on the Board.

The three new nominations of Ralph Barber, John Kilpatrick and Philip Marshall were all approved and they have joined the Board of Trustees.

The Reconvened Annual General Meeting

The Reconvened Annual General meeting is being called due to the Financial Statements for both H&GCT and The Wharf House not being available. It will be held at the same location, Ledbury Community Hall, as before. The sole purpose of the meeting is to approve the H&GCT financial statements for the period ending February 2018.

The Board of Trustees sincerely apologise for the inconvenience this situation has caused to our Members. The Trustees tried everything within their power to prevent this occurrence, but sadly they were still with the examiners on the day of the AGM.

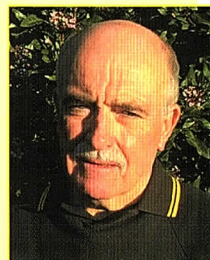
Check the Website

The meeting should go ahead whatever the weather, but Members are advised to check with our H&G website, **h-g-canal.org.uk**, on the day if they want the latest update on the situation.

Thank you



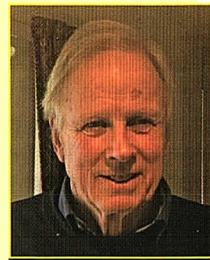
Ralph Barber
The Wharf House Director



Nigel Jefferies
Membership Secretary



Maggie Jones
The Wharfinger Editor
Sales & Promotion



Philip Marshall
The Wharf House Director



Eamonn McGurk
The Wharf House Director



David Penny
Commercial &
Technical Director

projects in progress...

Malswick

Paul Henshaw writes:

During the summer the team at Malswick has been working full tilt on a number of fronts.

The New Bridge

Priority was given to the construction of the new bridge across Ell Brook. The piling contractors arrived on site during June and sank 12 piles in total, six either side of the bridge. The piles went in to a depth of between 6 and 7 metres below ground level.

We then concentrated on erecting the reinforcement cages for the pile caps and building the shuttering box in preparation for the pouring of the concrete.

The first concrete pour took place during August and we were relieved that the ground conditions were ideal for the truck to be able to drive up to the bridge site. Ivor Catherall from the Over site came over to assist with operating the vibrating poker. (*Now, now, no tittering at the back*



Temporary scaffolding crossing Ell Brook.

please!) – a vibrating poker is an essential piece of kit used to remove air in the concrete whilst it is being poured. *Thank you Ivor.*

The shuttering was removed and the process was repeated for the farm side bank with the second pouring taking place during early September.

Meanwhile off site, the shear studs (270 in total) were being welded onto the top of the 18 beams by our two welders Ian Hunter and Chris Phelps. On completion of the welding operation, the painting team sprang into action and applied a primer and two applications of the top coat, colourfully described as “Yuk” green.



Sinking the piles.



Piling completed.

The last week of September saw the transfer of the beams to the site by Eamonn McGurk's team, and Mike Clarke from **Keyway** provided superb support operating the excavator to lower the beams onto the pile caps. The lift and placement went very smoothly and safely. *Thank you Mike.*

Our thanks also go to Patrick and Caithlin McGurk who provided valuable support during the summer.

The beams and deck plates are now being welded into place and to facilitate this part of the operation, two scaffold working platforms have been erected each side of the bridge again with the assistance of Jason Kavanagh from **KW Bell**. Their help is much appreciated.



Wiring up the rebar cages.

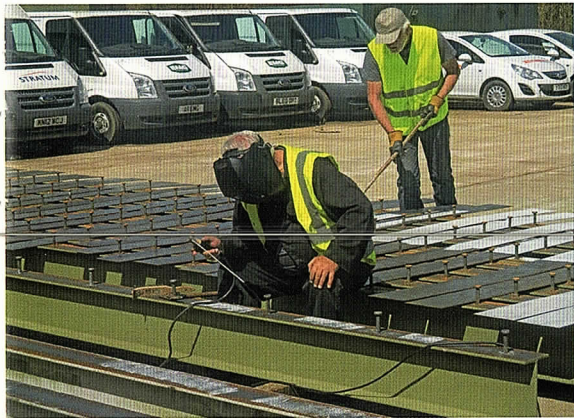


Pouring the concrete.

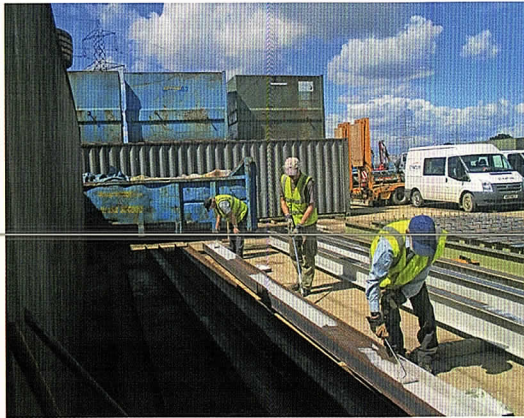


Pile cap with rubber base mat.

Paul Henshaw



Ian welding the shear studs.



Painting the 18 steel beams.

KEYWAY

NATIONWIDE PLANT RENTAL

Over 50 years experience
Quick response time
Extensive fleet of latest equipment



With more than £7m invested annually and a fleet of 1000, Keyway offers the most comprehensive range of equipment and support services for our customers and operators.



Welcome to the Keyway Group – Extensive range of equipment, personal customer care



Nationwide Plant Rental



Transport & Bulk Excavation



Recycling & Aggregates



Skip Hire



Plant Sales



Keyway provides a complete recycling and waste management service to the construction and demolition industry operating a fleet of specialist vehicles within the south west region.

We seek to provide value for money and improved environmental solutions for all our customer needs. www.keyway.co.uk



UK CONSTRUCTION RECRUITMENT is a leading employment agency specialising in the supply of temporary construction staff for the built environment. www.ukcr.co.uk

NATIONWIDE STONE SUPPLIES



NATIONWIDE STONE SUPPLIES specialises in providing all of your aggregate solutions no matter the size and scale of your project. www.nationwidestonesupplies.co.uk

For further information please contact us on
T: 0845 241 81 81 | E: plant@keyway.co.uk | www.keyway.co.uk



Lowering the first beam into position.



Ian checking the position of the first beam.



All 18 beams in place.



The deck plates ready for welding



The bridge side on.



The tracked dumper moving the ballast to the gateway.



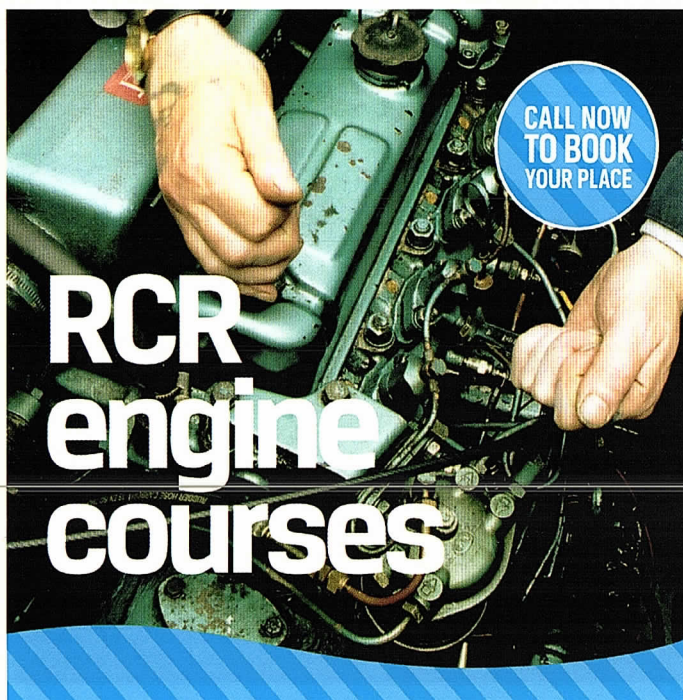
Tracking in the ballast.

A new Culvert and Gateway

Whilst work was in progress on the new bridge, a group of Volunteers led by Robert Heigham was involved in building a new culvert and gateway across one of the many drainage ditches. A gap was cut through the hedge and a new 15ft gate was installed.

The ditch was cleared out and a 3ft pipe was lowered into position. The sidewalls to the culvert were built up using hessian sacks filled with a dry mix of mortar. The sacks will rot away in the passage of time leaving a neat wall of interlocking cement blocks.

Finally, railway ballast was retrieved from the west woodland and dropped into the gateway using the tracked dumper (on loan from **Keyway** – Thank you Eamonn).



CALL NOW
TO BOOK
YOUR PLACE

RCR is about more than providing a breakdown service, we strongly believe in education and development of skills for boaters. Our courses are designed for current and potential boat owners who would like to learn about basic boat engine maintenance and the electrical systems on their vessels. It's ideal for all backgrounds and those wishing to develop their knowledge and skills further.

FOR MORE INFORMATION CALL
01785 785680



Robert's patented sack filling contraption.



The completed culvert.

Boundary Fencing

Meanwhile, our fencing contractor, Harry Clarke, put in the line of fence posts across the two largest fields ready for the stock fencing to be nailed into position. Thanks go to Harry for his kind donation of two gateposts which were used for the culvert.

If you feel you would like to help on either Tuesdays or Fridays, please contact Paul Henshaw on 01684 293930. >>> **PH**



Erecting the fence posts.



The finished gateway.

Please note that there is
NO PUBLIC ACCESS
on this site until the Canal has been
formally completed here, thank you.

Paul Henshaw

Health & Safety Officer

Following the recent resignation of the Trustee responsible for Health and Safety, the Trust has reviewed how it should manage its future activities in this regard.



The Trust is looking for a willing qualified Volunteer, with NEBOSH accreditation (*The National Examination Board in Occupational Safety and Health*). He or she should have experience in practical construction work. Being a key role, this will involve working directly with the Board of Trustees to maintain and improve our existing arrangements for managing all aspects of Health & Safety within the Trust.

Could any interested Member please contact the Chairman, Vaughan Welch (*see inside back cover*), with your CV, so that we can discuss how you can help the Trust?

Thank you >>> VW

Please note: The Wharf House, our subsidiary company, has its own ISOH qualified officer, who deals with all aspects of health and safety within hotel and catering.

E.B. HAYWARD & Co.LTD

Sheet Metal Work, Welding & Fabrications

We are a family run business established over 50 years ago, specialising in sheet metal work and fabrications in most metals including mild steel, stainless steel, aluminium, titanium, copper and brass.



- Items can be manufactured to your own drawings or from instructions.
- Quantities from 1 to 10,000.
- Sizes can range from a washer right up to fabrication of 1 tonne.

We have a wide client base with particular involvement in hydraulic press, concrete, materials handling, feed and flour milling industries.

It has been our pleasure in supporting the Herefordshire and Gloucestershire Canal Trust for over 20 years, and we will continue *to work together in the present, to revive the past, and secure a better future.* © H&GCT

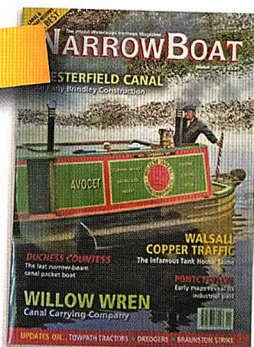
Simon Hayward: 01452 700384, Fax 01452 700740
SHEET METAL WORKS, ASHLEWORTH, GLOUCESTER, GL19 4JJ

fundraising

Working TOGETHER in the present, to revive the past and secure a better future!

For Sale

NarrowBoat
magazine
issues 1-38
offers £50 or over
for the 38 copies



H&GCT has been given a large collection of Narrow Boat magazines to sell for our funds. The price reflects the market for these now rare publications that are only available by subscription and not available in the shops.

Please contact Janet Moulton, see inside back cover, to arrange collection/delivery.

postage

STAMPS



Please save all the stamps from your Christmas card envelopes. Remember, stamps, albums, old postcards, in fact anything vaguely philatelic, can be turned into cash for the Trust.

Thank you to all who have sent in stamps. Please keep them coming.

Stamps can be taken to a Social Evening or other H&GCT event – or to **The Wharf House** or **Malswick House**. Or send them direct to:–
H&G Stamps, c/o Steve Bence,
35 Lime Road, Southam, Warwickshire,
CV47 1EQ. **Thank you** >>> **SB**

H&GCT LAND FUND

We thank our Members who have come forward to support our appeal for the **LAND FUND**.

more land = more restoration

We have had an offer of a significant loan as well as very generous donations, thank you to all who have started the ball rolling. However, we still have much further to go if we are to reach the £2m target in order to secure further pieces of land on offer at present. It is very important to build a succession of canal land that our teams can restore and eventually join up to make the Hereford and Gloucester a great waterway once more.

£2 million required

The **LAND FUND** will provide the means to obtain crucial sites along the line of the Canal where there is no new development proposed or where we cannot acquire the line of the canal by other opportunities. It is a vital fund to help us eventually restore the full length from Gloucester to Hereford.

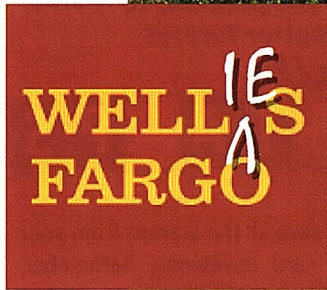
www.h-g-canals.org.uk then click 'About the Trust' then click 'Land Fund'

HEREFORDSHIRE & GLOUCESTERSHIRE CANAL TRUST

Working together in the present, to revive the past, and secure a better future!

H&GCT LAND FUND

What it is and how you can help us restore the Hereford & Gloucester Canal by contributing to it.



Volunteer experience ...

by Paul Henshaw



During the summer we were approached by Phillip Battersby from the **Wells Fargo Bank** in the UK, to investigate the possibility of setting up a two day volunteer experience.

A programme was arranged by Tony Sellwood and in early October, ten members of the Audit team headed up by Phillip, along with our own Volunteers were involved in three activities over two days.

They got stuck into clearing the weed from the canal cut at Oxenall, splitting and bagging up logs at Malswick House and starting a secondary clearance in the east woodland as part of the Malswick Project. Over the two days the groups were rotated so that each member of their team enjoyed a lot of variety.



The photos show the Wells Fargo Team getting stuck into clearing the weeds in the pound below the lock at Oxenall.



At the end of the final day they were treated to ciabattas and chips at the Malswick House. Thanks to Franco and Shane for putting on a fine spread.

We certainly enjoyed working with the Wells Fargo group (*or should they be known as Wellies Fargo*) and we hope to see them again next year.

The donation of £1550 from Wells Fargo to the Canal Trust was very much appreciated. *Thank you.*

There is now an ample supply of sawn logs at Malswick House. Please contact Brian Fox for further details (*see below*).

»» PH



Wells Fargo and H&G CT Volunteers outside Malswick House.

Brian Fox

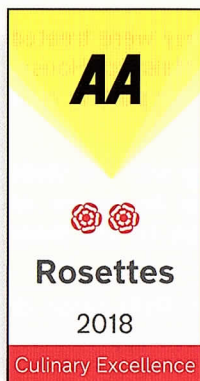
Logs for sale from Malswick House

£50 per builders dumpy bag payable at Malswick House – 10% discount at Malswick House when you collect your logs, so why not make a trip out for lunch? The logs available are mainly ash and hawthorn.

If you would like to learn more please contact

Brian Fox on **01432 358 628** oxenhall@h-g-canal.co.uk





A Second Rosette for ^{THE} WHARF HOUSE

Cotswold Journal writes ...

After eight years of consistently holding an AA Red Rosette for culinary excellence The Wharf House team were very proud to receive an award of 2 AA Rosettes in September.

There are only a very small number of restaurants within travelling distance of Gloucester to hold this prestigious award, although customers travel far and wide to visit both the Rooms and Restaurant at The Wharf House.

»» Cotswold Journal

^{THE} WHARF HOUSE launches Vegan Tasting Menus

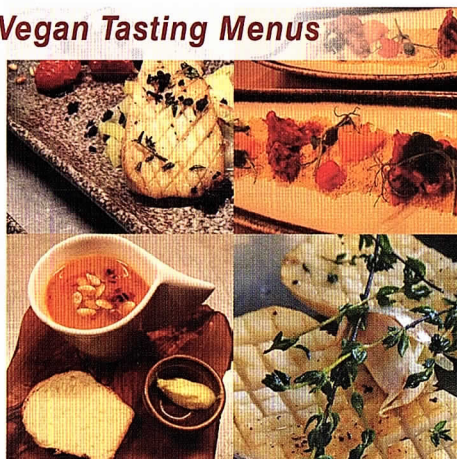
With a long history of meeting the individual needs of its customers *The Wharf House* has launched a dedicated Vegan Tasting Menu alongside its normal Tasting Menu and Vegetarian offering.

Volunteer Manager and Chef, David Penny said "We really wanted everyone to be able to come and share in the celebration of our success in gaining 2 AA Red Rosettes, and be one of the few restaurants to produce Vegan and Vegetarian Tasting Menus on our website equally with the traditional meat and fish based options."

All three options are 9 courses, and priced at £65 per person. There is also the option of a shorter 6 course Tasting Menu in all three versions at lunchtime— with all having samples published on their recently re-launched website www.thewharfhouse.co.uk. All the Tasting Menus should be booked ahead and are available Tuesday to Saturday lunch and evening. Alongside this they continue their ever popular à la carte menu.

For those fancying something a bit lighter there are classic grazing platters and simpler items like paninis and sandwiches alongside full Traditional Afternoon Tea or just a lovely scone or teacake and tea or coffee seven days a week.

»» DP



Winter Opening times at ^{THE} WHARF HOUSE

Tuesday to Saturday: lunch and evenings
for À la Carte or Tasting Menu
[booking very strongly recommended].

Monday to Sunday: lunchtimes
Terrace Menu and Afternoon Tea.

Over **Christmas** and the **New Year** we are
closed from Sunday, 23 December to
Thursday, 10 January

It is always advisable to book as we can get very busy. We only accept a certain number of tables at any time in the diary, so do not be offended if you are turned away even if we do not look full! The restaurant is available to be booked for private functions 7 days a week.

Gift ideas from ^{THE} WHARF HOUSE

Gift Vouchers for the Restaurant

Why not surprise your loved ones this year with a gift voucher for use at ^{THE} WHARF HOUSE offering the chance to sample sumptuous local food, created with flair and imagination. Vouchers can be purchased in denominations of **£20**, available by post with a gift card included for value of vouchers + £2.95.



Gift Voucher for Afternoon Tea

By popular demand there is now a gift voucher for Afternoon Teas at ^{THE} WHARF HOUSE. The teas include a pyramid of sandwiches, scones, cakes and desserts as well as a choice of beverage.

Vouchers are **£17.50** per person. They can be purchased either at ^{THE} WHARF HOUSE or available by post with a gift card included for value of vouchers + £2.95.



^{THE} WHARF HOUSE

AWARD-WINNING WATERSIDE RESTAURANT WITH ROOMS

01452 332 900

www.thewharfhouse.co.uk

Over, Gloucester, GL2 8DB

enquiries@thewharfhouse.co.uk

Turn off the A40 at traffic lights 250 yds west of Over Roundabout (Junction A40/A417). GR SO 816197

All profits from ^{The} Wharf House will be used for the promotion and restoration of the Hereford & Gloucester Canal.

GRAND HOLIDAY DRAW 2018 Results

Thank you to everyone who helped in any way to make this yet *another successful Grand Holiday Draw*. The final total raised, including donations in lieu, was £2190. and well over half of this came from the tickets sent out in The Wharfinger and returned by our Members. The draw was once again made at the September Social Evening at Much Marcle. This time all the winners were Members of H&GCT.

1st Prize: Narrow Boat Holiday for 4 – donated by **Black Prince Holidays**: Mr & Mrs Harden, Coleford.

2nd Prize: One Day's Boat Hire – donated by **Beacon Park Boats**: Mr & Mrs Robinson, Leominster.

3rd Prize: One night Bed & Breakfast for 2 at **The Wharf House**: Mr Varley, Cardiff.

Our grateful thanks to **Black Prince Holidays**, **Beacon Park Boats** and **The Wharf House** for donating the Holiday prizes which help to make our annual holiday draw such a success.

Thank you to everyone who supported the 2018 Grand Holiday Draw in any way.



Grand Holiday Draw 2017

The winners of the second prize in 2017, Keith & Sandra Tidey, enjoying a Day Boat Hire on the 'Mon & Brec', courtesy of ABC Leisure Group.



"We enjoyed our trip on a beautiful sunny day in early September on the Mon & Brec' from Goytre Wharf to Llanfoist Wharf and return, with some of our friends."

Social Evenings at the Royal Oak

7.30 for 8pm start

Much Marcle, HR8 2ND

Join us at our monthly meetings on the third Tuesday of each month (*except August and December*). Make a note on the calendar and tell your friends and neighbours. We have an excellent venue and interesting speakers on a wide range of topics. Why not share transport and make an evening of it – **everyone is welcome!**

MEETING CANCELLATION APOLOGY: 20 November **Severn Estuary – Gloucester to the Bridges**. We are sorry that the Social on November 20 had to be cancelled. There was a lack of communication between the old and new landlords of the Royal Oak and it was closed for re-wiring, etc on the day of our meeting. Every effort was made to contact our regular attendees, but we apologise to any one who made the journey.

PLEASE NOTE – no meeting in December, but all should be well by January 15 and I hope to see a good crowd to enjoy Dick Skeet's latest talk. >>> **JM**

15 January

A brief history of nostalgia

– Dick Skeet

Looking at our passion for yesterday and attitudes to "old things" such as heritage railways and old canal boats!



19 February

The H & G's Malswick Project

– Paul Henshaw

– an update on one of our major sites.

19 March

A Quizzical look at Canals

– Stephen and Gillian Chowns

Not sure what they have up their sleeves!!



16 April

History and preservation of steam boat "President" – Malcolm Braine

One of the most famous names on the waterways.

volunteer focus ...

This time we are focused on a duo of Volunteers who have worked as a successful team for the Trust over the years. Andy Smith and Henry Clark have designed and created a number of iconic features at Over and Malswick House over the years. Here is why:



Henry Clark

Andy Smith

Henry, how long have you been volunteering with the H&G CT?

About 15 years.

What attracts you to the waterways?

The interesting engineering among other things – they solved all the problems without modern tools or transport!

What drew you to volunteer with the H&G CT?

When Andy mentioned the Canal down at The Wharf House I thought it sounded interesting.

What do you enjoy about working with the teams?

Meeting people from different backgrounds.

Tell us about some of the main duties you carry out as a Volunteer?

Well, they have all involved metal work one way or another! The porch at The Wharf House is about the most visible but others range from railings to patching holes in boats.

What was your work before volunteering for H&G CT?

I've been, and still am, involved with tree surgery, logging, metal bashing and farm contracting.

What would you say to someone considering volunteering with us?

It's worthwhile and the more who join the sooner it will be finished!

What is your proudest volunteer moment?

That must be the day the porch was erected. We'd assembled it beforehand in the workshop but you never know.

Is there anything you would like to add?

How much I have enjoyed it all, and the knowledge that what I've done will be around for years to come.

>>> HC

Far left: the completed balcony.

Left: The balcony being installed at The Wharf House.





Henry welds the circular grill over the site trap for the abstraction channel from the River Leaddon.



The railings outside Malswick House, also designed and made by Andy and Henry.

Andy, how long have you been volunteering with the H&G CT?

Must be 15 – 16 years now.

What attracts you to the waterways?

I'm a Scorpio – so it was natural! ... and I agree with Henry – how did they do it?

What drew you to volunteer with the H&G CT?

Within a few months of moving to Ledbury, I saw an article on the Canal and the Trust, I think it was by Nigel Bailey. I saw they were asking for new Members to come forward.

What do you enjoy about working with the teams?

There is a good camaraderie, and everyone seems to have a clear purpose (usually). It all works well.

Tell us about some of the main duties you carry out as a volunteer?

My role has mainly been to design things that Henry makes, passing him the tools and supplying the coffee!

What was your work before volunteering for H&G CT?

I'd been retired for seven years, but before that spent my career in London and elsewhere working for ITV – first in advertising then later in Programme Planning.

What would you say to someone considering volunteering with us?

Go for it! You'll never be bored because they will always find you something to do!

What is your proudest volunteer moment?

I go with Henry – The Wharf House porch and balcony. I was particularly proud of the way the supporting columns fitted exactly as I'd planned.



Henry and Andy under the completed balcony.



The bespoke fire screen at Malswick House designed by Andy and made by Henry.

Is there anything you would like to add?

I'm moving to Somerset, but will always remember good days with Henry in his workshop and on site with other Volunteers. >>> AS

Thank you to Henry and Andy for all their work and best wishes to Andy for his move to Somerset. – Ed.

MALSWICK HOUSE

TRADITIONAL COUNTRY INN • CHRISTMAS PARTIES



A TRADITIONAL
COUNTRY INN
AT NEWENT



CHRISTMAS
PARTY NIGHTS
SEASONAL
MENU



01531 822 634

www.malswickhouse.co.uk

B4215, Newent, GL18 1HE

enquiries@malswickhouse.co.uk



All profits from Malswick House will be used for the promotion
and restoration of the Hereford & Gloucester Canal.

◆ Leaving a gift in your Will ◆

Our grateful thanks to the family of this Life Member

The Herefordshire & Gloucestershire Canal Trust has the ultimate aim of completing full restoration of the Canal from Gloucester to Hereford, an ambitious but achievable goal. Every legacy we receive, no matter how large or small, takes us one step closer to achieving this goal.

A Life Member and supporter of the Trust from Ledbury, Walter Stamp, sadly passed away earlier this year. He remembered the H&GCT in his Will along with eight other charities that he had supported during his life. A generous bequest of £23,220 was donated for our continued work in the Canal's restoration.

We thank Walter for remembering H&GCT in his Will and our condolences to his niece and family who contacted us in relation to this legacy.

As a registered charity, we are always in need of donations to help make this restoration a reality. It is thanks to the continued generosity of our supporters that we have been able to embark on successful projects such as the acquisition of the Malswick House in Newent and the Llanthony Lock and Cottages site which will ensure the Canal is sustainable in the future.

Leaving a gift will cost nothing to you today but will help secure and protect the future of the Canal.

There is a comprehensive H&GCT guide available that explains how to leave a gift in your Will to the **Herefordshire & Gloucestershire Canal Trust**.

You can also contact the **Legal & Project Development Team** at The Wharf House who will be happy to answer any queries you may have. All queries will be treated in the strictest confidence and with no obligation. It is recommended you seek professional legal advice before making a Will.

Thank you



What a gift in your Will could help to achieve:

Complete restoration of the 34 miles of Canal between Hereford and Gloucester.

Secure the future of one of the most attractive cruising routes in the country.

Provide recreation for tourists and locals whilst providing a natural habitat for a variety of wildlife

Ensure the Canal will be maintained for generations to come.

Give something back to a place that is special and memorable to you.



HEREFORDSHIRE & GLOUCESTERSHIRE CANAL TRUST

Working together in the present, to revive the past, and secure a better future?

Leaving a gift in your Will.



LEGACY GUIDE

Site News *roundup!*

Our Volunteers have been kept busy through the summer and autumn months. Here are their reports:



Encroachment of Bulrushes along Vineyard Hill.

Over Basin

Ted Beagles Reports:

Canal condition

A combination of low water level due to the lack of water in the River Leaddon for topping up, and the very warm sunny weather during spring and early summer has resulted in the navigation channel through the Basin and Vineyard Hill becoming temporarily impassible. This is due to excessive algae and weed growth and encroachment of the bulrushes.

As tides allow we are slowly raising the water level again back to normal but removal of some of the bulrushes, possibly by a mechanical method, will be required to restore it fully. This will be achieved gradually throughout autumn.

A lot of weed and algae has been raked out of the main section of canal basin by the Model Boat Club members. After leaving it to dry out for a few days this is collected up by the H&G CT Volunteers and used as a mulch under the hedgerows.

The recent departure of Britannia Engineering from site has left us with a lot of clearing up to do. Most of the materials left behind will be stored at Over, and will no doubt be useful at some time in the future.

Heritage boats

Much effort has been put in to Renton in recent months, but despite everything the engine keeps stopping in an apparently random manner. We shall persist until it is fully functional again.



Peter, Tim and John loading the trailer with weed.

Bosley continues to run well, but she has always struggled with algae and weed so has not been able to sail much recently.

Alder is also temporarily out of service due to the starter motor failing to engage. Fully cleaning of the bendix mechanism and simple bench testing after a careful examination of the teeth has revealed nothing. The motor has been sent to a specialist rewind company for an estimate of a repair or refurbished replacement.

Susie E and Mr Maysay

Repainting and remedial work on the superstructure of Susie E is now almost complete and she is due to be returned to the water soon. We want to do as much work as possible whilst she is out of the water on the trailer, since she has a tendency to rock whilst afloat

Mr Maysey has had a quiet summer, again struggling with the weed and algae. A memorable trip was when it was called out to tow Renton back to the basin, following engine failure during a trial run. This was achieved by carefully picking its way along the channel made by Renton on its outward journey.

Wharfhouse terrace gardens

The shrubs in the gardens around The Wharf House have grown a lot during the summer, and a team of our Volunteers have been in action of late to tidy things up ready for autumn.

The area of the terrace overlooking the top of the 'Great Wall' and cycle shed roof is being completely cleared of vegetation to provide safe access and a work area for constructing the brick arches of the cycle shed. After completion a new landscaped garden will be established to finish the area off.



Renton mooring.



View from Terrace down to the river.



View from Terrace down to the river.

Kymin East

Ralph Barber Reports:

Ralph Barber has recently become the site leader at Kymin East, an area he knows very well. Here is his report on two days work that our Volunteers did there in the summer.

Tuesday 14 Aug 2018

Penny and Ralph Ward came to the Kymin site to help cut back some of the undergrowth. Ted Beagles and Wilf Jones brought up the Grillo to train Ralph Barber. Following the training, Ralph cut the complete towpath for the

Kymin site to clear a space twice the width of the Grillo. An overhanging branch, with previous agreement with the landowner, was also removed. Before and after pictures included.

Friday 17 Aug 2018

A site meeting was held with the landowner and a walk of the complete site undertaken. Everyone was very pleased with the towpath work that occurred with the Grillo. Some further branch cutting was identified that will require a chainsaw in some cases. These will be worked on when the people with the right skills are available and a further review with the landowner will be done at the end of September to note progress and any further work that may be required.

»» RB



Ralph Barber

Oxenhall and Newent

Brian Fox Reports:

Half the team are still down at Malswick and those that are left have been taking holidays and catching up with tasks that need attention at home – after all, we are Volunteers and sometimes personal duties take precedence.

The Grillo ride-on mower, which was purchased last year, is doing a great job in keeping the towpath trimmed and also keeping down the brambles and nettles which we spent a long time cutting back last year with a strimmer.

The wall below the lock

Restoration of the wall below the lock is now back on the agenda and plans have been made to proceed. Risk Assessments and Method Statements have been written following the course on Health & Safety reported in the last edition. Before work can start on the wall, it was decided that the level of water in the pound below the lock should be lowered by about 9 inches in order to give us better access to the wall.

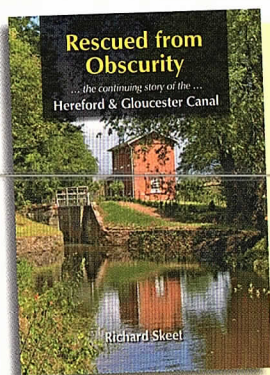


Brian Fox

The Wells Fargo Team get stuck into removing the overgrown weeds.

This was done by cutting a ditch across the dam and inserting a new overflow pipe at the desired level. It also enabled us to get stuck into the reeds which have grown up along the bank and are not welcome on a canal which will have boats on it one day.

As we were preparing the plans, the Trust was approached by a company in London called **Wells Fargo** who were looking for a community project to get them out of the office for a couple of days and the reed removal plan was put to them. Part of their team came to Oxenhall to help with this. (see page 14) **>>> BF**



*... to learn more about the history
of the Hereford & Gloucester Canal ...*

Rescued from Obscurity

the continuing story of the Hereford & Gloucester Canal
by Richard Skeet, 200 page paperback, over 200 illustrations and
photographs. Price **£10 + £2 P&P**

Please make cheques payable to **Herefordshire & Gloucestershire Canal Trust** and send to Janet Moulton, H&G Sales and Promotion, 18, Coningsby Court, Coningsby Street, Hereford, HR1 2DF.
Also available from **The Wharf House**.



Tibberton Show

by Maggie Jones

On a particularly windy day back in August the Trust Stand returned to a venue that we have not been to for some years. Along with Janet and Ginny, with help in setting up from Andrew, we began to erect the gazebo, but it proved to be far too flimsy for the gusts that raced across the field. Janet had fortunately brought a smaller, more robust, one. So we switched them and firmly anchored it in place.



Visitors to Tibberton Show learn more about Membership of H&GCT.

With Malswick not far away, it was good to hear from a number of people expressing how much they enjoy meals at **Malswick House**. The first of these even stopped to tell me before I had entered the show ground.

We had a steady flow of visitors, including one of our Vice Presidents, local MP, Mark Harper, who stopped by to show support and a 'photo opportunity'.

We were able to talk to people about the work we are doing locally. Even show them photos of their local 'celebrity' from the horticulture marquee, Robert Heigham, who as well as working on one of the bridges over Ell Brook, has another interest; *growing prize-winning vegetables!*

Thank you to all concerned, it was good to meet all who visited the stand and hope to see you next year!

» MJ

Canal Walks



H&G Canal Trust has produced a series of walk leaflets which explore various parts of the Hereford & Gloucester Canal.

**STAPLOW, WITHINGTON WHARF,
DYMCK, LLANTHONY LOCK,
OXENHALL and OVER BASIN**

30p per walk leaflet (*Over Basin 40p*)

All proceeds towards the promotion and restoration of the Hereford & Gloucester Canal. available via the website and The Wharf House.

Newent Onion fayre

The H&GCT Sales Stand was there!



Mike Bowden ready to greet visitors to our stand at Newent Onion Fayre.

by Ginny Birkett

This prestigious local annual event took over the town of Newent on Saturday, 8 September, with street entertainment, eateries, and stalls of the local community groups. Well, we had to be there too, to share our story!

The streets were thronging with visitors of all ages, and our stall attracted many people interested in our upcoming local projects at Malswick and Newent Station. Our draw tickets sold well, people were buying canal related items, and the children could not resist the Lucky Dip. Something for everyone!

Our main aim for the day was to raise the canal awareness locally, and this worked well.

Maggie and I would like to thank our Volunteers who helped in shifts during the day, setting up the gazebo, moving stock, serving the customers and discussing our canal with those who were intrigued with the project. With this help, each of us could have some free time to enjoy Newent's Big Day.

I think we'll be back next year. I recommend helping with our sales stand for newer Volunteers, as it is fun! >>> **GB**

Ginny Birkett

GEOFFREY YURCH GARDEN SERVICES

LANDSCAPING
GROUNDS MAINTENANCE
TREE SURGERY FENCING

CONTACT 07950 136074/01531 805040
INFO@GEOFFREYURCHCONTRACTS.CO.UK
WWW.GEOFFREYURCHCONTRACTS.CO.UK



Everything Canal Boats

*Services from 10 marinas in the UK and
boating holidays from 16 locations.*

- Boating Holidays
- Boat Sales
- Day Boat Hire
- Boat Builders
- Chandlery & Repairs
- Marina Services
- Moorings
- Canalside Holiday Cottages

BRITISH MARINE
LEADING THE INDUSTRY

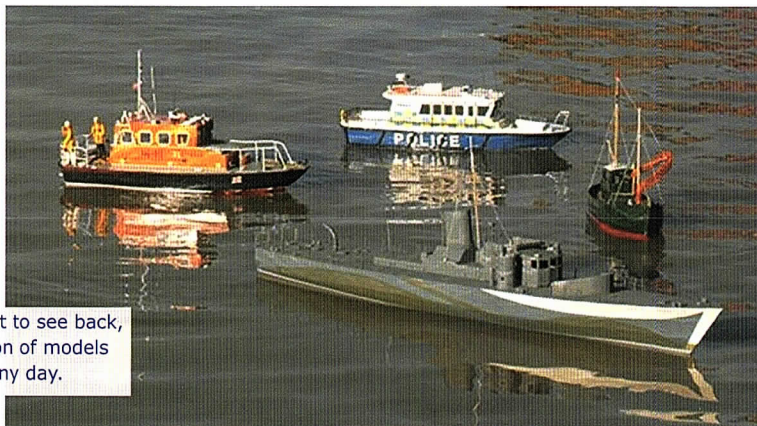


The Inland
Waterways
Association



www.everythingcanalboats.com

Call Us: 0330 333 0595



What we want to see back, a fine selection of models on a nice sunny day.

David Exell

It was so pleasant to go down to Over last weekend and find it peaceful and without all the equipment and buildings that have occupied the site all summer due to the roadworks going on in the area.

As a model boat club we lost the long hot summer with very low water levels which resulted in stupendous weed growth and caused most of our members to give up sailing at Over.

We are now trying very hard to persuade them to come back, as all the roadworks and their presence in the compound at Over have gone. It was nice to see that the water level was back up and the big heritage boats floating properly again.

On the last Monday in September we had another weeding session and on one haul gathered so much weed we could not pull up the chain over the wall

and had to guide the weed onto the launching ramp. It was the heaviest we have ever trawled, so we hope we have removed a very large clump, opposite *Mister Maysey*. It would probably have stopped the big engines on the H&GCT boats too. Our fishing members identified tench and chub among the fish we returned to the Canal as well as eels. 'Winter is coming' as they say in *Game of Thrones* so with weed growth abating we hope to have plenty of boating in the coming months.

The Micro Magic sailors have coped with the conditions not only on the Canal, but also a remarkable shortage of 'the right sort of wind' this year, which has not helped. Soon they will be starting the Winter Series and we wish them well.

»» DE

Gloucester & District Model Boat Club

Sails at Over basin on Wednesday, Friday and Sunday afternoons (weather permitting). You should find somebody sailing between 1.00pm and 4.00pm. The Club members will be pleased to talk to you about their models and the Club. Members have models of all descriptions including amphibious craft. Yachts are very popular.

Chairman. Edward Tedaldi.



MOAT CONTRACTING

GROUNDWORK SPECIALISTS



Driveways



Demolition



Landscaping



Topsoil



Screening Hire



Plant Hire



Site Clearance



Foundations

Large enough to deliver. Small enough to care.

07887 544 400

moatcontracting@aol.co.uk



Hello, to all our followers, users, readers...

This has been a very trying time for our clients and the helpers; what with the ever increasing pond weed and then the ever increasing sunshine, which helped the pond weed, but stopped us from taking the Wheelyboat out. That in turn stopped the more disabled clients from attending, on the other hand we were able to provide an extra support for John Hamer in his never ending battle with the pond weed.

On a more positive note, as far as I'm aware we are still the most favourite disabled sailing operation around the Gloucester city boundary.

I have been contacted by Father Christmas's booking agent, Mr Al Fer, to

Sailing4Disabled meets every Tuesday at **Over Canal Basin** from 11.00 to 14.00. It is open to everyone – whether they have a disability or not.

Contact: Pete (Long Gone Silver) Bisson: on 07913 015018 • peterwb49@hotmail.com

• www.sailing4disabled.org.uk



ask if we would like a visit arranged this year at Over. This would be either late November or early December. So make a point of checking our Facebook page for up coming events. On that note, may we wish you all a very **Merry Christmas** from Andy, David, Eric, Martin, Martin 2, Patrick, Sandra and Pete Long Gone Silver.

»» **Pete**, Long Gone Silver or Jolly Skipper



Only four barrows of weed, well we only had two hours of work left in us.

John Hamer

News from the Friends of National Waterways Museum Gloucester

Chris Witts writes

The long hot summer certainly brought the people into the Museum, many wanting a trip on Queen Boudicea II to cool off!

This season we are offering visitors the opportunity to be guided around the Museum and a few Friends have offered their services as a guide. Before the season got underway the Museum in conjunction with Gloucester Cathedral arranged a one-day course to learn how to guide the visually impaired. This proved very useful recently when a group of visually impaired visitors came to the Museum and took the opportunity to be 'guided'.

One aspect of guiding is that you never know how the group are going to respond

to you. I am a guide and have many stories to tell, you lose some and indeed you gain some! On one visit I did, at the end, say to a chap, "are you part of this group?". "No", he replied, "I heard you talking, found it interesting and decided to tag along. I have bought one of your books though."

History and Heritage Festival

The Gloucester History and Heritage Festival brought many people into the Museum. Our popular 45-minute boat trips along the canal on QBII was busy, with extra trips having to be arranged at short notice.

Mud continues to be a problem in the dock basin and currently the barge Riparian is busy digging it out alongside the Waterways Museum, the last thing we want is for QBII to become stuck with a full load of passengers on board!

»» **CW**

Chairman FGWM

The barge Riparian digging out mud alongside the Waterways Museum in Gloucester Docks.



Chris Witts

The Over Basin Swans

An update for readers following the progress of this year's brood Monica Hamer writes:

With only five signets to look after, we thought it was going to be a good year for our resident swans and they all thrived quite well for the first four weeks, then two disappeared.

Later after leaving the canal for a week Sam and Sadie returned with just two, a male and female. Both are now big, healthy and full of character. We'll be sorry to see the cygnets leave to allow Sam and Sadie to have another brood next year.

»» MH

Copy deadline for the next Wharfinger

MONDAY, 7 JANUARY

Advertising in The Wharfinger

Show the support of your business by advertising in The Wharfinger. Rates from £39 per issue and we will gladly design your advertisement free of charge. Please contact:

Ginny Burkett on **01531 820345**

or email: **vmbktt@gmail.com**

Page List of Advertisers:

- 2 Beta Marine
- 36 Braunston Brokerage/Marina
- 30 Everything Canal Boats
- 29 Geoffrey Urch Garden Services
- 12 E.B Hayward & Co Ltd.
- 8 Keyway
- 22 Malswick House
- 32 Moat Contracting
- 35 Print Plus
- 1 The Oak Inn, Staplow
- 10 River Canal Rescue
- 17 The Wharf House

**Please support our advertisers –
SUPPORT OUR SUPPORTERS**

stationery • leaflets • mailers • posters • folders • programmes • newsletters • brochures • prospectuses • calendars • magazines • books • exhibition panels

PRINT PLUS

01432 272025



126 Widemarsh Street • Hereford HR4 9HN
Fax: 01432 353962 • Email: enquiries@printplushereford.co.uk

www.printplushereford.co.uk

always delivering quality



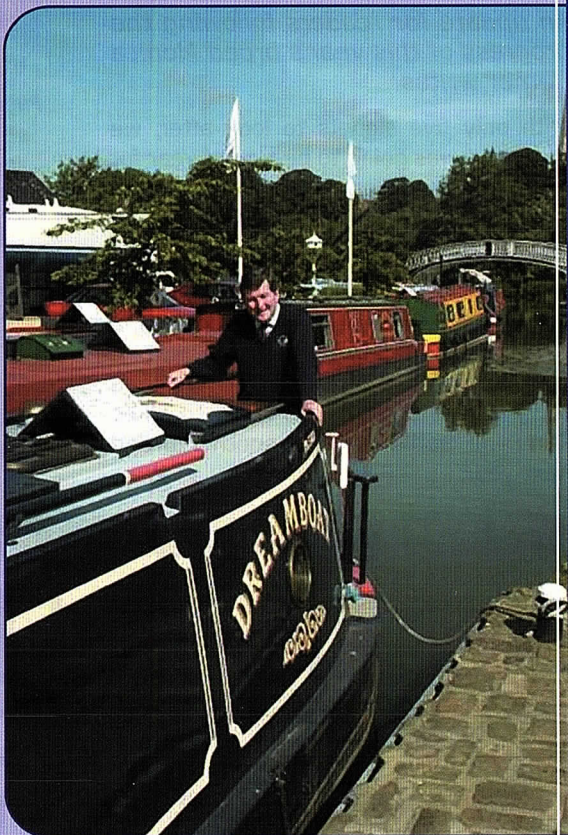
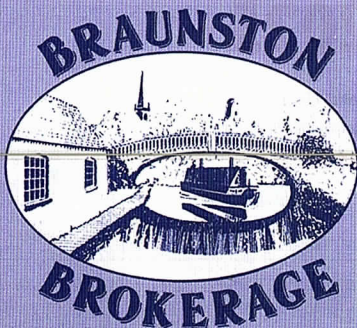
Buying or selling your DREAMBOAT?

*Then make Braunston Brokerage
– at the heart of England's
waterways – your first port of call!*

*Established in 1988, we are
a major player in the selling
of narrowboats – new and
secondhand – with a
reputation for professionalism
that is second to none.*

*Our marina offers the fullest
range of support services.
Uniquely, we have two dry
docks on-site for surveys,
hull-blackening, repaints, sign-
writing and below waterline
repairs. Also engineering and
refit facilities.*

*Sell your Dreamboat
where it will be seen!*



For full information – including our
competitive brokerage package –
contact Tim Coghlan at:

Braunston Marina Limited, Braunston,
Nr Daventry, Northants NN11 7JH
Telephone 01788 891373
Fax 01788 891436

Website: www.braunstonmarina.co.uk
Email: sales@braunstonmarina.co.uk

Contact details...

Vaughan Welch – Chairman
0121 477 9782 chairman@h-g-canal.org.uk

Roger Holmes – Treasurer
01594 840 316 accounts@h-g-canal.org.uk

David Penny – Commercial & Technical Manager
01452 332 900 lpdt@h-g-canal.org.uk

Nigel Jefferies – Membership Secretary
Two Hollylea Close, Bartestree, Hereford, HR1 4DN
01432 850 661 membership@h-g-canal.org.uk

Janet Moulton – Mail Order Sales & Promotion
18, Coningsby Court, Coningsby Street, Hereford, HR1 2DF
01432 264 366 mailorder@h-g-canal.org.uk

Maggie Jones – The Wharfinger Editor/ Sales & Promotion
01452 618 010 editor@h-g-canal.org.uk

Caroline Jones – Fund Raising
01594 332 900 fundraising@h-g-canal.org.uk

Caroline Buffery – Company Secretary
01452 332 900 co.secretary@h-g-canal.org.uk

Wilf Jones – Restoration and Maintenance
01452 413 888 maintenance@h-g-canal.org.uk

Ted Beagles – Over Site Leader
01452 522 648 overbasin@h-g-canal.org.uk

Brian Fox – Oxenhall Site Leader
01432 358 628 oxenhall@h-g-canal.org.uk

Paul Henshaw – Malswick Site Leader
01684 293 930 malswick@h-g-canal.org.uk

Chris High – Yarkhill Site Leader
01568 615 575 yarkhill@h-g-canal.org.uk

Ralph Barber – Kymin East Site Leader
01568 615 575 kymineast@h-g-canal.org.uk

Legal & Project Development Team
01452 332 900 lpdt@thewharfhouse.co.uk

General enquiries: information@h-g-canal.org.uk

Unless specifically stated opinions expressed are those of the author and do not necessarily reflect the policy of the Herefordshire & Gloucestershire Canal Trust. As a Registered Charity, with defined objectives, we cannot endorse the content of any specific advertisement, product or services. The Trust accepts no liability for any matter, or advertising, contained in this magazine. Reproduction of extracts from the magazine is welcomed provided that full acknowledgement is given.

Membership records are computerised. Your entry is available for inspection if you send a SAE to the Membership Secretary.

We try to ensure details of talks/events are correct – please verify with the relevant organiser if travelling long distances.

© 2018 Published by the Herefordshire & Gloucestershire Canal Trust.

The Wharf House Company Ltd [No. 4627931] is part of the Herefordshire & Gloucestershire Canal Trust Ltd group of companies. The Herefordshire & Gloucestershire Canal Trust is a non-profit distributing company limited by guarantee [No. 2704407] and is a registered charity [No. 1010721].

Registered Office: The Wharf House, Over Canal Basin, Over, Gloucester, GL2 8DB.

Want to help? The Canal is always in need of new volunteers. Our activities continue to expand and you can normally find a use for any skill. Gardeners to first aiders, brickies to those willing to help with a shovel, pen or paper. The H&G CT also welcomes offers of good quality used tools and machinery from those who no longer need or cannot use them.

Want to join?

Please support our voluntary work by becoming a Member of the H&G CT. A membership form is available online or from The Wharf House.

H&G CT UK Membership Rates

	Annual	Life
Individual	£10	£200
Joint/Family	£15	£300
Senior Citizen	£7.50	£115
Joint Senior Citizen	£10	£150
Corporate	£25	£500

PLEASE NOTE: All subscriptions and donations are treated as being made under the Gift Aid scheme. You state that you do not wish us to do this. Payment made by Standing Order greatly assists us and payment remains under your control. All payments to:

H&G CT, 6, Castle Street, Hereford, HR1 2TH

Visit our websites:



www.h-g-canal.org

THE WHARF HOUSE
www.thewharfhouse.co

MALSWICK HOUSE
www.malswickhouse.co



'Like us'
on Facebook

www.facebook.com/hgcanaltrust
www.facebook.com/TheWharfHouse
www.facebook.com/malswickhouse

Hereford

Our objective is to rebuild the 34 mile Canal linking the centre of Hereford to Gloucester and its connection with the 2,500 mile inland waterway network. We have major restoration sites in each county, together extending to some 4 miles. The intention is to provide a financially sustainable independent Canal which does not require regular financial support from public bodies for its future operation and maintenance.

The H&G Canal Trust

The Canal Society, formed in 1983, became the Herefordshire & Gloucestershire Canal Trust, a registered charity, in 1992. It has an ordinary and corporate membership approaching 1,400, here and abroad.

The original Herefordshire & Gloucestershire Canal

Work started in 1792 reaching Ledbury from Gloucester by 1798. In 1827 Steven Ballard was appointed to oversee the Canal's completion, which reached Hereford in 1845; this was one of the last major canal routes completed in Britain. The Canal stretched from the River Severn at Gloucester, via Newent, Dymock and Ledbury to Hereford, using 22 locks and 3 tunnels. It was closed in 1881 to allow construction of the Ledbury-Gloucester railway which in turn closed in 1964.

