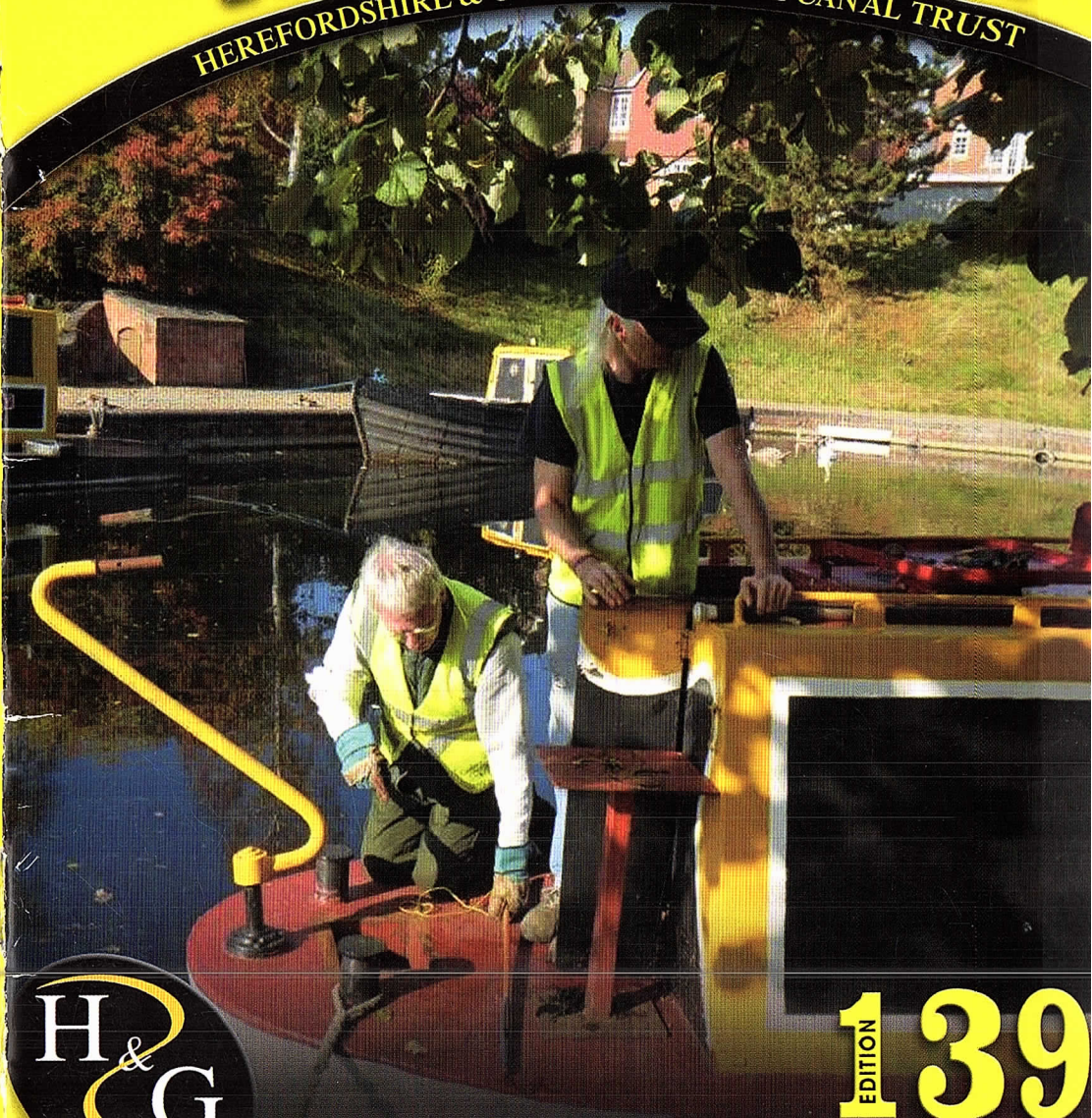


£1 free to members

Spring 2019

The Wharfinger

HEREFORDSHIRE & GLOUCESTERSHIRE CANAL TRUST



H & G
CANAL TRUST

139
EDITION

REBUILDING A SUSTAINABLE CANAL BETWEEN HEREFORD & GLOUCESTER

Working together in the present to revive the past and secure a better future.

HEREFORDSHIRE & GLOUCESTERSHIRE CANAL TRUST

Working *together* in the present to revive the past and secure a better future.®

Who does what? ...

To get in touch see "Contacts" see inside the back cover.

Honorary Life Presidents:

Janet Moulton, Cliff Penny

Vice Presidents:

R. E. Barnes TD, Richard Graham MP, Mark Harper MP, Duff Hart-Davis, James Hervey-Bathurst CBE DL, Sir John Lushington Bt, Jesse Norman MP, Diana Organ, Tim Parker, Bill Wiggin MP

Board of Trustees

Chairman: Vaughan Welch,

Vice-Chairman: John Kilpatrick

Finance Trustee: Roger Holmes

Land and Environment Trustee: John Kilpatrick

Strategy Trustee: Ralph Barber

Project Trustee: Eamonn McGurk

Restoration & Maintenance Trustee: vacant

Marketing and PR Trustee: Maggie Jones

Membership Trustee: Nigel Jefferies

Fund Raising Trustee: vacant

Commercial Trustee: Philip Marshall

Company Secretary: vacant

Accounts Examiners: Griffiths Marshall, Gloucester

Health & Safety

Vaughan Welch (temporary position)

Hereford & Gloucester Construction Safety Assoc.

Restoration & Maintenance Teams

Hereford Roving Team: John Pritchard

Kymin East: Ralph Barber

Yarkhill: Chris High

Oxenhall: Brian Fox, Geoff Hopper

Over and Vineyard Hill: Ted Beagles

Major Projects Teams

Malswick Project: Paul Henshaw, Tony Sellwood

Newent Station Project: Ralph Barber, Brian Fox, David Gregory, Mike Harris, Tony Sellwood

Mill Barn Project: Ralph Barber, Ted Beagles, Pete Bisson, David Excell, Roger Holmes, Maggie Jones

Architects: Roberts Limbrick

Membership Services

Secretary: Nigel Jefferies,

Gift Aid: Janet Moulton

Press Liaison

Maggie Jones

H&G Canal Sales & Promotion

Hereford Roving Team: Janet Moulton, Barbara Moses, Ray Moses, Penny Shetliffe, Pat Skeet, Heather Worth

Gloucester Roving Team: Ginny Birkett, Maggie Jones

The Wharfinger

Editor: Maggie Jones

Design/Production: Maggie Jones

Proofreading: Becca Moulton, Janet Moulton, Amy Bugler

Advertising: Ginny Birkett

Distribution: Janet Moulton

Digital Photo Library: Colin Dymott

Website Development

Team Leader: Maggie Jones,

Web Master: Nick Dymott,

Committee: Ted Beagles

Social Events

Organiser: Janet Moulton, **Support:** Nigel Jefferies, Stephen and Gillian Chowns

Talks and Walks

Co-ordinator: Nigel Jefferies

Dick Skeet, Ted Beagles

The Wharf House Company Limited

Over, Gloucester, GL2 8DB. 01452 332 900

www.thewharfhouse.co.uk

Directors: John Kilpatrick – Chair,

Philip Marshall – Finance,

Ralph Barber, Eamonn McGurk,

Bookkeeper: Debbie Royston

Accounts Examiners: Griffiths Marshall, Gloucester

All profits from ^{the} Wharf House and Malswick House will be used for the promotion and restoration of the Hereford & Gloucester Canal.

Contents

page

- | | | | |
|----|--|----|--|
| 3 | Editorial: The great value of our Volunteers | 21 | Social Evenings at The Royal Oak |
| 4 | Trust Organisation | 22 | The Wharf House Company |
| 4 | Annual General Meeting 2019 | 23 | The closure of Malswick House |
| 5 | So who is doing what? | 23 | The Wharf House Restaurant with Rooms |
| 6 | Newent Station Project | 24 | Over Basin ... vital facilities needed |
| 8 | Projects in progress: Malswick | 25 | Project Contract Co-ordinator required |
| 11 | H&GCT Volunteer Opportunities | 26 | Site News roundup! Over Basin |
| 12 | Fundraising: Grand Holiday Draw 2019 | 29 | Site News roundup! Oxenhall & Newent |
| 12 | Fundraising: Kind Donations | 30 | Canal Walks leaflets |
| 13 | Tim Parker remembered | 30 | Logs for Sale from Malswick House |
| 15 | Volunteer Focus: Thank you David! | 31 | Nature Watch: The Bees at Over Basin |
| 16 | A letter to the Editor | 32 | Winter Bazaar report |
| 18 | Volunteer Focus: Wilf Jones | 35 | Sailing4Disabled |
| 20 | A now for something completely different – Social report | 36 | News from the National Waterways Museum Gloucester |
| 20 | Travels with the Trust Stand | 38 | Gloucester Model Boat Club |
| | | 39 | Nature Watch: Xylaria hypoxylon |
| | | 39 | Advertising in <i>The Wharfinger</i> |

E.B HAYWARD & Co.LTD

Sheet Metal Work, Welding & Fabrications

We are a family run business established over 50 years ago, specialising in sheet metal work and fabrications in most metals including mild steel, stainless steel, aluminium, titanium, copper and brass.



- Items can be manufactured to your own drawings or from instructions.
- Quantities from 1 to 10,000.
- Sizes can range from a washer right up to fabrication of 1 tonne.

We have a wide client base with particular involvement in hydraulic press, concrete, materials handling, feed and flour milling industries.

It has been our pleasure in supporting the Herefordshire and Gloucestershire Canal Trust for over 20 years, and we will continue *to work together in the present, to revive the past, and secure a better future.* © H&GCT

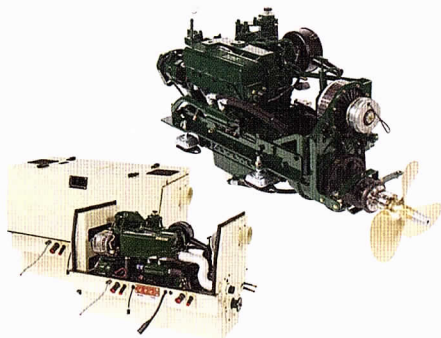
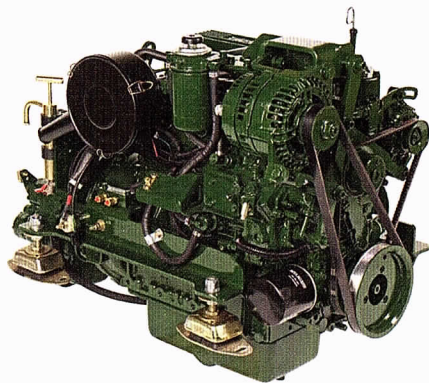
Simon Hayward: 01452 700384, Fax 01452 700740
SHEET METAL WORKS, ASHLEWORTH, GLOUCESTER, GL19 4JJ

Your needs . . .

BETA MARINE

Seagoing Saildrives Inland Waterways Marine Generating Sets Spares & Support

- 30 years of customer centred focus, listening to needs & delivering long term value solutions.
- Specialists in customer advice & support at all points of a products voyage.
- Superb after-sales service via our network of approved engine installers and service centres.
- Extensive range of 14 to 98 HP keel cooled propulsion engines with mechanical or hydraulic gearboxes.



- Super silent acoustic housings, 3.5 or 5.0 kVA travel power, bow thrusters and hybrid propulsion options available.
- Keel cooled Generating Sets <58 kVA with or without super silent acoustic housings.
- 5 year self-service warranty.

. . . our tailored solutions delivering reliability and peace of mind

BETA MARINE

www.betamarine.co.uk

Tel: +44 (0)1452 723492 Email: sales@betamarine.co.uk



The great value of our Volunteers

The Herefordshire & Gloucestershire Canal Trust is composed, almost entirely, of volunteers, who, over many years have given much of their free time working for the Trust. Our Volunteer achievements were recognised in 2016 by the Queen's Award for Voluntary Service.

The Queen's Award for Voluntary Service is the highest award given to local volunteer groups across the UK to recognise outstanding work in their communities. H&GCT was one of 193 charities, social enterprises and voluntary groups to receive this prestigious award that year. The number of awards given to groups across the whole of the UK was slightly higher than the previous year, showing that the voluntary sector is thriving and full of innovative ideas to tackle community challenges.

Our Volunteers, and those of the Waterways Recovery Group, delivered the restored canal basin at Over. This was the largest all volunteer canal restoration project in the UK in 1999-2000. The commercially estimated £750k of contract work was delivered by Volunteers for just £65k – showing the power of volunteers and private sector working together with public sector facilitation.

I have worked on *The Wharfinger* since 2001, firstly, with Cliff Penny at the helm, and now, as editor myself. It is not surprising that moments like the Queen's Award and the opening of Over Basin make me proud to work on this magazine to share our Volunteers' hard work with the Membership and Supporters of our Canal Restoration. Each edition I look for as many contributors as possible to include within the pages to show the very diverse areas with which our Volunteers get involved – but always with the Canal at the heart of things.

This edition is no exception, the pages have a varied selection of news stories to share. This includes a new management structure that is taking shape as the magazine goes to press. With newly-elected, enthusiastic Trustees having joined the board, Ralph Barber gives a breakdown of the new Trustee roles on the following pages.

Opportunities have arisen in this new structure for new Volunteers to step up and help the Trust. We hope you will give these a careful thought to see if you, or someone you know, would enjoy supporting the restoration in these areas. *See page 11.*

It is important to remember that an organisation made up of volunteers, is not the same as a business with paid contracted staff. Our time is our own, and whether we give a few hours or commit many years to the restoration, it is all deeply valued. This year we say goodbye to two of our key volunteers, Wilf Jones and David Penny, both of whom are moving to pastures new. They have both given many years to the H&GCT. We give our thanks to them for all the great endeavours they have freely given towards building a fully sustainable canal for the future. *You can read more about this on pages 15–17 and 18–19.*

Tim Parker

We have learned the sad news that Tim Parker, longtime supporter and friend of H&GCT, has passed away. Tim is known by most as the founder of the very successful Black Prince Canal Boats.

Please find a tribute paid to Tim, his life and achievements on page 13.

Thank you >>> MJ



Trust Organisation

A report from Ralph Barber

Trustee, Ralph Barber highlights the beginnings of a new structure for the Canal Trust.

Since the AGMs in 2018 a large amount of time has been spent in looking at the roles of the Trustees. While it is easy to say you need a Chair and someone to look after the money, what else is required? A lot of work has been done in looking at how we have previously run the Trust, how others operate a Trust doing canal restoration, looking at the issues we have encountered and how not to repeat the same mistakes. To start addressing the changes we announced at the AGM that all Canal

Trust business would be separated from The Wharf House.

In December a meeting was held with each Trustee – all current plus a few ‘retired’ – to gather their input. All of this, comments and ideas, were collated into a document – with roles and details of responsibilities for each position. In early January this was shared amongst the Trustees for each to review. At the Board meeting the role names and tasks for each role were agreed. The devil is always in the detail. The assigned Trustees will be reviewing their appointed roles over the next few months and working through the details required whilst also moving their roles forward.



Advance Notification

THE HEREFORDSHIRE & GLOUCESTERSHIRE CANAL TRUST

2019 ANNUAL GENERAL MEETING

will be held on Thursday 27 June 2019 at 7.30pm
at **Ledbury Community Hall**, Ledbury HR8 2AE

This is the formal notice of the 2019 AGM to give Members the opportunity to make a note in their diary. The Agenda and Annual Report will be in the next edition of ***The Wharfinger***.

In accordance with the H&G CT's Articles and Memorandum of Association, those members of the Board of Trustees who are retiring on rotation but offering themselves for re-election do not require to be formally nominated to serve an additional term.

New nominations

New nominations to serve on Board of Trustees are welcomed. Requests for a

nomination form should be made by the member making the nomination by email via **contact us** on our website **h-g-canal.org.uk**. Nominations should be submitted in the period between 28 days and 7 days prior to the AGM.

Proxy voting

Every member who is entitled to vote at an AGM may appoint a proxy to vote in his/her stead. A proxy must be someone entitled to vote at the AGM. Proxy forms are also available via **contact us** on our website **h-g-canal.org.uk** and should be completed, signed and returned to arrive at least 48 hours before the start of the AGM.

Thank you

So who is doing what?

A very brief guide:

Chair: Vaughan Welch.

Vaughan, who manages the board meetings, has the Company Secretary reporting to him and is accountable for governance such as policies.

Vice-Chair: John Kilpatrick.

John will deputise for the chair when required.

Finance Trustee: Roger Holmes.

Roger will deal with the finance side of the Canal Trust, including, for example, the monthly finance reports for the board and accounts supplied to Companies House.

Fund Raising Trustee: *Currently vacant.*

We are looking for someone who can chase down the grants and other sources of funding to support the Strategy as it moves forward – as well as current projects such as Newent Station.

Commercial Trustee: Philip Marshall.

Philip will be accountable for implementation of commercial and residential agreements – ensuring the money comes in!

Land & Environment Trustee:

John Kirkpatrick. John will move forward land agreements for the development of the canal in line with the agreed strategy and will ensure the Trust follows best environmental practices.

Strategy Trustee – Ralph Barber.

Ralph will look at our Strategic vision and the work required to support it. He will also be working with John on focusing on the 'next' stretches of the canal.

Project Trustee – Eamonn McGurk.

When we first gain access to land sometimes, we need to respond quickly and having a project approach enables us to do this. Eamonn will focus on this area.

(Volunteers will be able to do both 'Projects' and 'Restoration and Maintenance' work.)

Restoration & Maintenance Trustee – *Currently vacant.*

We have agreed that all 'Projects' should ideally last less than a year – the site then gets transferred to Restoration and Maintenance to finish the work. Sometimes the starting of a new site can come directly under this role.

Marketing & PR Trustee: Maggie

Jones. Maggie will keep our external facing sites up to date as in the website, organise attendance at shows and remains the editor of The Wharfinger.

Membership Trustee: Nigel Jefferies.

Nigel is accountable for our membership services, supporting talks as requested by other groups and the monthly social evenings.

The Wharf House Board remains in place: John Kirkpatrick – Chair, Philip Marshall – Finance, supported by Eamonn McGurk and Ralph Barber.

»»» **RB**



ALL SEASONS

Delicatessen and Licensed Café

independent and family owned



Nestled in the centre of the historic market town of Newent you will find a carefully chosen range of quality foods. Artisan cheeses, Hampers, Afternoon Teas and much more..... Pop in and browse.

10 Church Street, Newent
Gloucestershire GL18 1PP

01531 822940
www.allseasonsdeli.co.uk

projects in progress ...

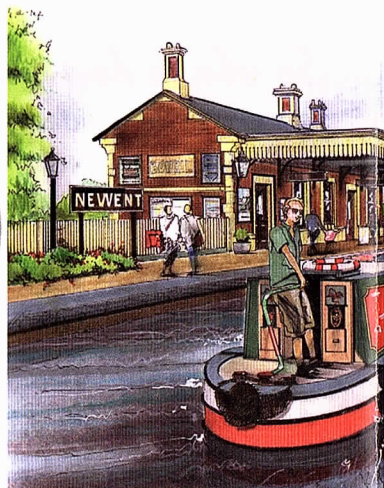
NEWENT STATION

David Penny writes:

The exciting vision for Newent Station area has been put together by a Project Team of Mike Harris, Wilf Jones, Brian Fox and myself who have been working on this for many years behind the scenes as the jigsaw of land assembly was concluded.

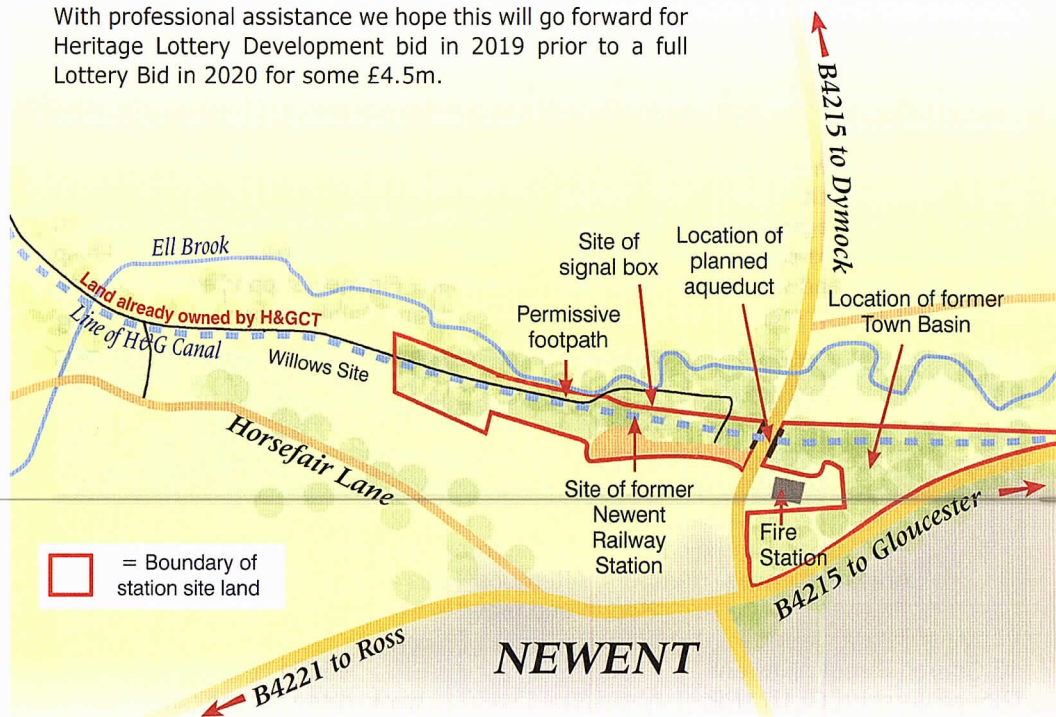
Brian Fox has been valiantly finding Canal and railway remains on the ground and plotting them with the team so we can get to a final design for the whole site. Significantly in 2018 we were joined by recent recruit and volunteer architect, David Gregory to pull all the ideas together.

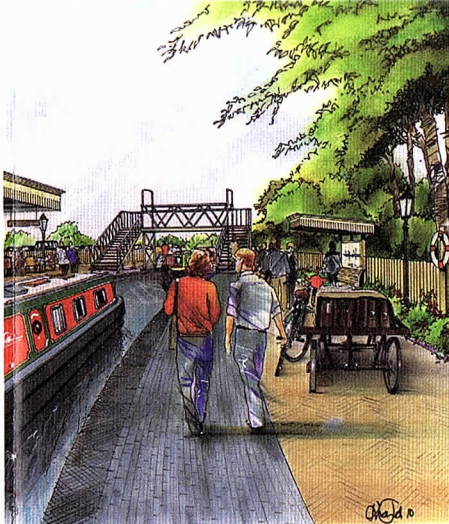
With professional assistance we hope this will go forward for Heritage Lottery Development bid in 2019 prior to a full Lottery Bid in 2020 for some £4.5m.



Please note that there is NO PUBLIC ACCESS on much of this site until the Canal has been restored here, thank you.

However, there is a permissive woodland path as shown here on the plan.





A artist impression of how Newent Station might look.

The Newent Station Project includes:-

- Raise platforms to a higher level.
- Rebuild station (initial drawings done).
- Install storey under station building and under whole of platform to increase lettable space and viability.
- Station to look exactly as it did when in use when viewed from platforms.
- Rebuild both original signal boxes to provide two letting bedrooms.
- Space to provide tea rooms and visitor centre at station level as per most preserved railways; creche below and various units for rental for craft etc.
- Install one or two preserved railway carriages to act as letting rooms.

- Letting rooms and creche will provide a base trade to tea room and can be managed from there.
- Rebuild Llanthony GWR footbridge and Llanthony Lock swing bridge at Bridge Street end of platform.
- Install a concrete trough from the station to Bridge Street.
- Build a steel aqueduct over Bridge Street.
- Construct a staircase of two locks tight to the Gloucester side of Bridge Street.
- Construct a new town basin behind the Fire station using some of the original surviving structure cut into the rock
- Build car park accessed off Horsefair Lane
- The layout of site to be revised from artist impression with footbridge moved to Bridge Street end of platform.
- A revised footbridge location gives view of locks and glimpses of Town Basin as well as the station looking the other way.
- Install a slipway at the car park site.
- Canal continues to be visible from bypass.

We have a great Project Team taking this vision forward, and I look forward to seeing it progress to help deliver a great tourism and economic resource for both the Canal Trust and the Community as part of delivering an economically sustainable waterway for future generations. >>> **DRP**



**GEOFFREY
URCH GARDEN
SERVICES**



LANDSCAPING
GROUNDS MAINTENANCE
TREE SURGERY FENCING

CONTACT 07950 136074/01531 805040
INFO@GEOFFREYURCHCONTRACTS.CO.UK
WWW.GEOFFREYURCHCONTRACTS.CO.UK



projects in progress ...

Malswick

Paul Henshaw writes:

During the autumn the team at Malswick has been focussed on completing the new bridge across Ell Brook.

The concrete pour

During the autumn the team at Malswick has been focussed on completing the new bridge across Ell Brook.

Following the spot welding of the cover plates onto the steel beams described in the last edition of *The Wharfinger*, two layers of reinforcing mesh were placed into position on the bridge deck.

Four loads of crushed concrete were delivered to site, and was used to create the ramps up to the bridge deck. The ramps were consolidated using a vibrating roller kindly lent to us for the day by Eamonn McGurk and **Keyway**.

In early October we arranged for a synchronised pour of concrete with two Easymix trucks operating, one on each side of the bridge. The purpose of this was to ensure equal loading across the bridge structure. We were fortunate that we were able to get both trucks onto the flood plain and up the consolidated ramps without any difficulty.

Again, vibrating pokers were used to remove the air during the pour and a 6-metre tamper was hired to level the concrete bed.



Alan operating the roller to consolidate the ramps.



Laying the reinforcement mesh.



Synchronised concrete pour.



Graham filling the gabions.



The filled gabions.



Wilf and Mark tamping the deck.



The finished deck.

Gabion protection

Whilst the bed was curing, we concentrated on the erection and filling of gabions with crushed concrete. The gabions were installed to protect the ramps up onto the bridge when the stream floods. Thanks go to John Burton of **Moat Contracting** who kindly allowed us to collect the gabion stone from his yard.



Chris drilling the cover plates.
(Well we think it is Chris)

Paul Henshaw / Alan McBride



The bridge rails being assembled.



Robert and Mark erecting the fencing.



The bridge to date.

Please note that there is NO PUBLIC ACCESS on this site until the Canal has been formally completed here, thank you.

Gates and fencing

Two sets of gates were erected at each side of the bridge and connecting fencing was put up to create a secure compound which will facilitate the movement of livestock across the bridge.

Finally, the railings on the bridge were assembled and bolted into position.

The wet weather in early December meant that we were unable to get a further three loads of crushed concrete down to the bridge. We are now planning to carry this out in the early spring, when the ground conditions will be more favourable.

However, ...

However, all was not lost during the wet weather. We were able to carry out some repairs to the farmhouse annexe requested by the Gloucester Charities Trust.

If you feel you would like to help on either Tuesdays or Fridays, please contact Paul Henshaw on 01684 293930. **Thank you.** >>> PH



Paul Henshaw / Alan McBride

Ian finishing up after the repairs to the farmhouse annex have been completed.

ERROR CORRECTION: Apologies go to Ian Turner. In the last edition Ian was inadvertently given a new surname. Sorry about that Ian. Sloppy reporting.



H&GCT Volunteer Opportunities

Funding Trustee

Vaughan Welch writes:

As you will see elsewhere in this edition of *The Wharfinger* the new Trustee Board have split up the Trust's activities and each Trustee has taken responsibility for a portion of the work that the Trust does.

One key and very important activity that has not yet been covered is that of Fundraising and the Trustees would like to co-opt onto the Board a Volunteer who would like to become actively engaged in raising funds for our various projects. Whilst much of the volunteering would be home based it would involve attending the monthly Board meetings and taking on the responsibilities of a Charity Trustee and thus directing the way the Trust is run.

Hence we are seeking from within the Membership someone who would be willing to offer their time to apply for project specific and general funding, initially from fund giving charities and sponsorship, then later on applying to the various lotteries and local enterprise partnerships for project specific funding that might also include the development and running of project specific appeals.

Are you interested? – if so please contact Vaughan Welch on chairman@h-g-canal.org.uk who can tell you more. >>> VW

Health & Safety Officer

Following the recent re-organisation of Trustee responsibilities, the Trust has reviewed how it should manage the health and safety of future activities.

The Trust is looking for a willing qualified Volunteer, with NEBOSH accreditation (The National Examination Board in Occupational Safety and Health). He or she should have experience in practical



Do you want to volunteer for the trust in a non-physical capacity?

Administration Manager

Roger Holmes writes:

Do you want to volunteer for the trust in a non-physical capacity?

I know that there are some members who cannot volunteer for physical work. This is your opportunity to help.

We are looking for somebody to carry out basic admin functions: filing, paying invoices and record keeping, correspondence.

The person will be required in the Trust office and they should have basic office skills and be computer literate.

Are you interested? – if so please contact Roger Holmes on rogervectis@aol.com who can tell you more. >>> RH

construction work. Being a key role, this will involve working directly with the

Board of Trustees to maintain and improve our existing arrangements for managing all aspects of Health & Safety within the Trust. **Are you interested?** – if so please contact Vaughan Welch on chairman@h-g-canal.org.uk who can tell you more. >>> VW



Grand Holiday Draw 2019

Friends and colleagues will be eager for a great holiday for just £1 !



HEREFORDSHIRE & GLOUCESTERSHIRE CANAL TRUST

GRAND HOLIDAY DRAW 2019

1ST PRIZE

NARROW BOAT HOLIDAY for FOUR

To be taken in 2020, excluding Bank Holidays. Donated by Black Prince Holidays

2ND PRIZE

ONE DAY'S BOAT HIRE

To be taken in 2020, excluding Bank Holidays. Donated by Everything Canal Boats

3RD PRIZE

ONE NIGHT DINNER BED & BREAKFAST for TWO

at The Wharf House, Over Wharf, Gloucester. Donated by The Wharf House Company

Promoter: Mrs J. Moul, 18 Coningsby Court, Coningsby Street, Hereford, HR1 2DF
Prizes to be drawn at the September Social at Royal Oak, Much Marcle on September 17th 2019
Registered under the Gambling Act 2005

TICKETS £1 each

Please Note:

All completed ticket stubs and money from their sale should be returned to the promoter, **Janet Moul.**

See inside back cover or tickets for details.

Once again we have some great prizes, so let's make this another successful Year!

The prize winners will be drawn at the Social Evening at The Royal Oak, Much Marcle, on 17 September 2019. Our thanks to **Black Prince Holidays, Everything Canal Boats** and **The Wharf House** for donating the holiday prizes – so every pound raised is a pound towards restoration of the Canal.

We appreciate that some recipients are not prepared to buy or sell draw tickets – we apologise but we do not have the resources to be selective in whom

receives tickets. There is no obligation to return unsold tickets. In order to save costs we have not included tickets in copies of **The Wharfinger** sent to Councillors, Local Authorities and businesses.

Again this year we have sent you two books of tickets to sell to family and friends. More books can be sent to you if required. Please contact Janet Moul on 01432 264 366 and she will be delighted to send you some tickets. **Thank you.**

Kind donations

Readers will remember the article that David Penny wrote in edition 137 about one of our early benefactors, Robin Stiles, who sadly passed away in March last year after a short illness.

Bristol Industrial Archaeological Society (BIAS) was given books belonging to the late Robin Stiles, with the intention that the books should be sold and the proceeds should be split between BIAS and the Hereford and Gloucester Canal Trust. As a result, a cheque for £250.50 was sent to H&GCT.

We also say thank you to Mr and Mrs Lambeth for their two kind donations of £100 each. One to the H&GCT General Fund and the other to the Land Fund.

Both donations were most gratefully received and will help towards our goal of restoring the canal from Hereford to Gloucester.

To learn more about the **H&GCT LAND FUND** go to www.h-g-canal.org.uk / 'About the Trust/Land Fund'

Thank you to all concerned.



Tim Parker Remembered

In February we learnt that one of our Vice Presidents, and good friend to H&GCT, Tim Parker, lost his battle with cancer.

Ed Helps, of ABC Leisure, recounts Tim's life:

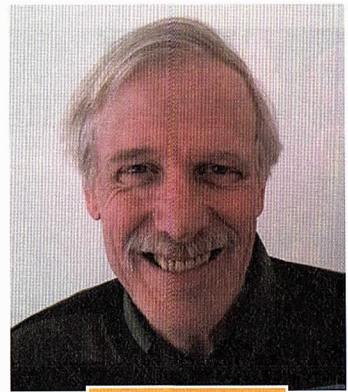
Tim started his working life at an agricultural merchant in Norfolk selling seed & fertiliser to local farmers. His talents were soon spotted and he was moved to a bigger depot in Essex heading up the seed side of the business. When the company was purchased by Dalgety in 1979 Tim and two other managers left to set up their own business called Harlow Agricultural Merchants (HAM). In 1987 HAM purchased a failing canal boat company called Black Prince which Tim took over the reins until some nine years ago.

Tim was an astute business man and made Black Prince a viable company with an excellent reputation which it still has today. Tim was generous with both his time and money. He was a great supporter of many things that ensured people could enjoy canals and boating. He was chairman of APCO 2011-14 which is now British Marine Inland Boating representing and supporting the many UK hire companies. He advised BW (now CRT) on their navigation advisory group, and was chairman of Drifters, a marketing consortium which he helped set up in the 90s recession. He was also a great supporter of the H&G Canal Trust and a Vice President.

Tim was a great friend with both a sharp mind and wicked sense of humour. He was a proud family man and with wife Bernie, they have two daughters, Hilary and Victoria, and a son James. He will be greatly missed by everyone who knew him. >>> **EH**

...and Janet Moulton writes:

I first met Tim when Brian and I went to Stoke Prior to persuade him to use H & G Christmas cards for Black Prince. He did not take up the offer – but has supported us in



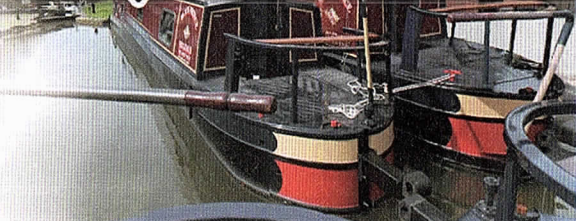
Tim Parker

many ways since then. Including donating for many years the first prize in our Grand Holiday Draw – a week's holiday on a Black Prince Boat. Tim's comment – 'if that is not too boring' when asked again and again! He also used his contacts to obtain many of the other prizes offered to us.

An astute business man Tim kindly sponsored the fit out of the ground floor room Aylestone at The Wharf House, as he showed ongoing support in all forms in the vision of The Wharf House helping to create a long term economic sustainable waterway.

Tim made the trip to Much Marcle many times for our social evenings – the only Vice President to do so – and he always called to see us on the H&G stand at many Boat Shows. He will be sadly missed in the waterways world.

>>> **JM**





THE WHARF HOUSE

RESTAURANT WITH ROOMS

Restaurant Menu (inside or outside)

À la Carte Menu

9 Course Tasting Menu £65

Tues – Sat 12 – 2pm / 5.30pm onwards

Terrace Menu (inside or outside)

Relaxed Dining Lighter Menu

Afternoon Tea £17.50

Drinks and Coffees

Tues – Sat 12–4pm / Mon – Sun 12 – 2pm

01452 332 900

www.thewharfhouse.co.uk

Over, Gloucester, GL2 8DB

info@thewharfhouse.co.uk

Directions: Turn off the
A40 at traffic lights 250 yds
west of Over Roundabout
(junction A40/A17).
GR SO 816197



All profits from The Wharf House will be used for the promotion and restoration of the Hereford & Gloucester Canal.

volunteer focus

Thank you David!

Tributes having been coming in for a volunteer who has given more time and energy to the H&G Canal Restoration than any other.

David Penny has freely given his time and talents to building the H&GCT to the success it is today. Without his unselfish dedication, planning and project knowledge we would not have The Wharf House or most of the other assets that H&GCT owns.

He has built a successful and profitable business at The Wharf House with the restaurant and seven bedrooms that has provided H&GCT with the income to generate much of the funds needed to run the charity. David has worked tirelessly for H&GCT putting his own interests and health at risk.

Legal & Project Development Team – under the umbrella of The Wharf House Company, L&PDT was founded by David, bringing together professional individuals and companies who have given their time and abilities to help build a sustainable canal. The team has been recognised nationally as the number one in the UK in delivering economically sustainable waterways.

Both privately and through the Trust, David has been asked to advise most other Canal Trusts, Local Authorities throughout the Country, and both British Waterways and CRT have acknowledged L&PDT as the UK leaders in what they do.

David the Chef – Under David's culinary skills the restaurant gained The Wharf House its first Rosette. This has continued ever since. Last year, one of his young prodigies, Maisy Smith, took the cuisine to two rosettes.

Readers will appreciate that David's decision to cease his many voluntary roles within H&GCT was a difficult one. David's leaving will be a very sad loss to the Canal Restoration we are all involved in. His dedication and drive receives respect and thanks from many Members. David will be very much missed by many within the Trust.

In his resignation letter, David Penny paid tribute to our Founder, Nigel Jefferies, his father, Cliff Penny, when he speaks of the determined team who pushed for the full restoration of our Canal.

»» MJ



David Penny

In his resignation David wrote:

I have taken the sad decision that no later than 28th February 2019, I will cease all voluntary work for the H&GCT.

- ... I am pleased that in parting from the Trust I leave it with:-*
- some £2m+ of assets with less than 15% gearing*
 - a diverse property related income of over £55k/ annum*
 - landholdings and projects which provide for 10 years of volunteer work [if we double output every year]*
 - a similar volume of landholdings and projects in close out, with a likely £1m cash on the table*
 - a 2 AA Red Rosette Restaurant – one of the top 0.1% in the UK (producing a profit last year in addition to above despite the market)*
- ... Please work together positively to deliver a restored canal and a strong Canal Trust.*

»» DRP

A tribute to David ...

Dear Editor,

What a shock it was when I heard that David Penny had resigned his many voluntary responsibilities within our H&G CT. How can it be that this 'Mr. Dynamo', who has done so much over so many years for the Trust, has resigned? Surely the Trustees tried to persuade him to stay; it is such a loss!

For David Penny has the qualities of being totally committed, hardworking and multi-talented. Above all, he has vision in abundance, that special quality that allows him to plan well for the future, linking various projects to great effect. He has been involved in so much voluntary work for the Trust, when he could actually have been earning a fat wage in the private, salaried sector. He is 100% for the aims of the Trust.

He seems greatly influential with council officials, planners, architects, building inspectors, surveyors, sponsors, fund-raising and all else when required and all with no pay. He has been a Trustee, a H&S officer, a Legal Director, The Wharf House Manager, a Project Team Leader on many sites, trouble-shooter, caretaker at any time of day or night, barman and events planner at Trust events, and even a top-grade chef! He is definitely respected by many, nationwide, for his far-reaching negotiations and levels of persuasion.

No doubt he has made mistakes now and then, as we all do. Accepting the fact that David can occasionally drive you bonkers and that he cannot ever be described as Mr Subtle, I anticipate that he will be a hard act to follow. Our Trust's other officials will no doubt step in to take over his duties but maybe not so many will happily get up in the night, on any day of the year, to solve a problem big or small, anywhere in the two counties.

I write this personal letter without any contact with David for many months, I just feel it sad that he has left the H&G CT that he has cherished for decades. I have been a member of the H&G CT and its former Society for over 30 years, and personally hope that he may return to help lead the Trust in the future.

»»» Chris Clark *Life Member*

The construction of Over Basin in 2000.

We wish David well with his future plans!

Some of the other tributes ...

I have worked with David for more than twenty five years. His name has become synonymous with the development of Canal Trust. His achievements in ensuring the longer term delivery and sustainability of the Hereford and Gloucester Canal cannot be underestimated. David has brought commercial nous and technical knowledge to bear in equal measure. I am sure he will be sorely missed by everyone involved, but will undoubtedly make a success of whatever he chooses to do next!!

>>> Geoff Hughes

longstanding Herefordshire Council Director (retired 2018)

David has probably changed the thinking of canal restoration groups in the UK more than anyone else. He is known throughout as an example of how to apply long term planning with commercial acumen with a result that restorations will be sustainable and a major benefit to all. A sad day for the Trust to lose such an able person.

>>> Martin Turner

Long term Boatman and Member

I have been immensely impressed by the drive and determination by which David has pursued the commonly-held dream of a full navigable canal, and by his ingenuity in mastering planning and delivery systems to achieve the maximum gain to the benefit of restoration projects along the route of the canal. As the Engineer in Hereford Futures we worked closely to produce a city flood alleviation scheme that incorporated the canal at its terminal end to form one of main conduits for relief of excess water that would otherwise cause flooding; a highly desirable project in its own right. The H&G CT, in consequence of David's departure, have lost a highly capable and highly admired Project Delivery team leader. To David, I do hope that your migration to new interests are as successful and rewarding as your past 30 years with the H&G CT have been.

>>> Charles Pickles

BSc (Eng), CEng, MICE, MInstRE, Member and formerly Project Engineer at Hereford Futures Ltd.

Since I became involved with the H & GCT 20 years ago, David has always been "in the picture". His knowledge of the infrastructure

throughout the two counties and his wide range of abilities will be sorely missed. Best wishes for his future.

>>> Janet Mould

Former Chairman and Volunteer

I hope that the Canal Society will be paying tribute to the work that David Penny and his father Cliff have put in to getting the restoration this far, they have been the driving force behind the Canal and have put a huge amount of work into getting it as far as it has progressed.

>>> David Exell

Gloucester & District Model Boat Club

David has a deep understanding of what is needed to get things done effectively, on a modest budget, and that would improve the well-being of areas along the canal route.

His achievements have given the Trust a respected voice among local Councils and businesses. Other Restoration groups have looked on with interest.

So it's time to say thank you to David and wish him well in whatever role he now takes on. Well Done!

>>> Peter Lawrence

Long term Member and Volunteer

David became involved with the then Canal Society at an early stage in the 1980's, under the tutelage of his father, Cliff. David embraced the concept of sustainability and headed up the fitting-out of The Wharf House. When completed, he began running the business and through his initiative, it gained recognition as a place to eat and stay.

David negotiated with the local authorities to ensure legal protection of the original line of the former canal and where this was not possible, agreed diversions. He looked out for lengths of the canal which could be restored by the Trust and investigated their acquisition. No-one can gainsay the commitment David has shown to the Trust and The Wharf House, during the many years that he has been involved.

>>> Nigel Jefferies

A founding Member and Trustee

David gave totally dedicated volunteer service to the Trust for three decades. An outstanding performance, sometimes revealing touches of genius!

>>> Paul Brown

Long term Member and Volunteer

volunteer focus

Wilf Jones has been a very active volunteer and has worked on every site of the H&GCT. He has headed up various teams of volunteers and would turn his hand to a large variety of projects. He was a Trustee on the former Council of Management for six years.

Here is why he worked so hard for us:

Wilf, how long have you been volunteering with the H&G CT?

18 years after taking early retirement.

What attracts you to the waterways?

Being close to water is always relaxing, hence moving to South Devon within walking distance of the sea.



Wilf Jones



Wilf test drives the new grillo.

What drew you to volunteering with the H&G CT?

An advert in the Gloucester Citizen and the need for Joan not to have me under her feet!!!

What do you enjoy about working with the volunteer teams?

Creating a tranquil waterway from an overgrown plot of land, into something that nature can benefit as well as us humans.

Tell us about some of the main duties you have carried out as a volunteer?

Site leader at Over, fit out of then The Wharf House, Vineyard Hill, then Kymin, Moat



Wilf (far right) representing H&GCT, with the then Chairman, Janet Moulton, at the presentation of the Queens Award in 2016.

Farm, monitoring Dymock, and assisted in the Malswick Project. A CoM member for six years

Tell us more about your involvement on recent projects?

I have played a small part, mainly behind the scenes, assisting with the Malswick Project, also progressing the pre-work at the start-up of the Newent Station Project, unfortunately I will not be here to see either completed, but I / we plan to return to see the finished articles.

What was your work before volunteering for H&GCT?

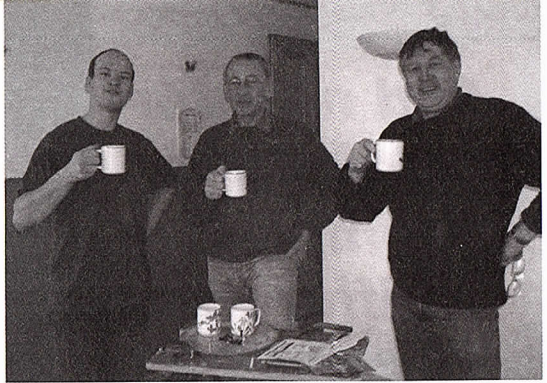
My trade was a Patternmaker in an Iron Foundry, moving to Work Study as a Time and Motion engineer. Latterly, for approx 20 years I was a manager of various departments within Rank Xerox.

What would you say to someone considering volunteering with us?

Join, enjoy the fresh air, the camaraderie and the sense of achievement of giving something back to society in general.

What is your proudest volunteer moment?

Standing at the side of the canal during the breaking of the dam between Over basin and Vineyard hill and watching the water flow



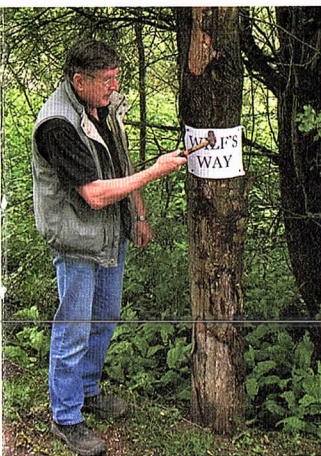
Wilf (right) with Martin and Nigel Bailey, enjoying a well-earning cuppa during the fit out of The Wharf House, where he played a key role.

into the new cut, following two weeks of intense work along side our volunteers and the WRGies, filled me with immense pleasure, a sense of achievement and great satisfaction of playing a small part in its creation, will remain with me always.

»» WJ

We say a big THANK YOU to Wilf for all his work for H&GCT, but sadly, we also must say farewell too, as he is moving to Devon with his wife, Joan. *All the best Wilf and Joan!*

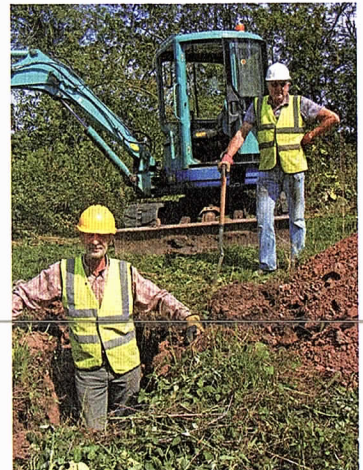
»» MJ



'Wilf's Way' is an area of Over Basin that will always give us fond memories.

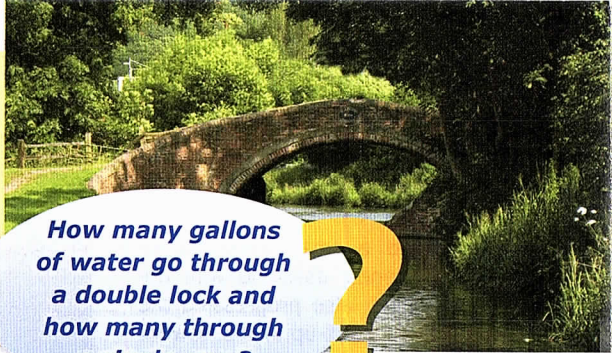


Wilf (left) working at Newent Station with John.



Wilf (right) working at Moat Farm with Martyn Tilford.

And now for something completely different!



How many gallons of water go through a double lock and how many through a single one ?

Peter Lawence reports on our first social of the year, **A Quizzical look at Canals**, at Much Marcle.

The January Social Evening was a big success when Stephen and Gillian Chowns, (with her husky voice), entertained with a canal quiz illustrated by some superb photos taken during their travels around British canals. Five tables battled it out tackling questions like which canals have turf sided locks, how many gallons of water go through a double lock and how many through a single one.

The quiz ran to a tie breaker in a tense finish with some good laughs and hair raising accounts of running aground (nearly) and rough water on the tidal Thames accompanied by "Gloriana", the Royal Barge built for the Queen's Jubilee. Her Majesty was not aboard but lower down the river our hosts wondered if they would survive as heavy water came over their bow.

Thank you Stephen and Gillian. A good evening and one to repeat from time to time.

»» PL

Why not have a good day out with the H&G CT?

by Janet Moulton and Maggie Jones

The Sales and Promotion teams are expecting to attend a number of events this year. Here is a proposed list, but it may be subject to change as the year goes on.

We welcome additional volunteers to help promote the Canal; no experience necessary – just come and be part of our team – we will do our best to put you at ease and to find a task that you will enjoy. Your admission to the event will be free and we always try to ensure that you have some time to look around.

We would like to attend other local shows so if you know of any please talk to Janet or Maggie.

»» JM/MJ



This is the list for 2019....

May 4	Droitwich Boat Festival, Worcestershire
June 8	Ledbury Community Day
June 29–30	Historic Narrowboat Rally, Braunston, Northamptonshire
August 17	Tibberton Show
Sept. 7	Newent Onion Fair
Nov. 9	H&G CT Winter Bazaar, Ledbury

Social Evenings at the Royal Oak

7.30 for 8pm start

Much Marcle, HR8 2ND

Join us at our monthly meetings on the third Tuesday of each month (*except August and December*). Make a note on the calendar and tell your friends and neighbours. We have an excellent venue and interesting speakers on a wide range of topics. Why not share transport and make an evening of it – **everyone is welcome!**

Please note some changes of speakers due to ill health.

19 March

A brief history of nostalgia

– Dick Skeet

Looking at our passion for yesterday and attitudes to “old things” such as heritage railways and old canal boats!



16 April

Titanic – the things you didn't know!

– Mike Watkins

Not a talk about “President” as planned, but a bigger boat – which I am sure will go down well!

21 May

Swan rescue South Wales

– Peter Martin

A dedicated group who came to the aid of our cygnets at Over Basin, talk of their experiences with these large birds.



18 June

Past, present and future – The Gloucestershire and Warwickshire Steam Railway

– Richard Winstanley

A success story in the restoration world.

The Wharf House Company *by Maggie Jones*

an explanation of its components and future plans

The Wharf House Company is an umbrella business made up of a number of constituent parts.

The Wharf House Restaurant with Rooms is a very successful and profitable business worth around £750k.

As the foot of the advertisements for The Wharf House reads *'All profits from The Wharf House will be used for the promotion and restoration of the Hereford & Gloucester Canal'*.

These profits have funded the other constituent parts. This included:

Legal & Project Development Team – over the last 15 years L&PDT has saved H&GCT tens of thousands of legal fees, dealt with all planning issues and consents, the launched major projects, and invested £300k in delivering the H&GCT's objectives and saved hundreds of thousands in employing external services.

H&GCT Administration – paid the staff costs for the clerical and legal side of the H&GCT including rents, covenants and company secretary services. This brings directly into the H&GCT £55,000 per annum.

Over Basin – around £150K has been invested by The Wharf House Company in

all Over site maintenance, the heritage boat fleet, as well as the complete restoration of the Vineyard Hill section.

Malswick House Country Inn – the entire fit out and running costs of this Countryside Inn, which when the canal is completed in the area will have the potential to bring revenue into the H&GCT.

You will have read in the *article on page 4*, by Ralph Barber, where he explains the Trustee roles required to take the Canal Restoration forward in the next phase of its development. These new roles will encompass much of the work that was previously done by the Legal & Project Development Team, all Over site and boat maintenance, and include the H&GCT's own administration. These elements transfer from the control of The Wharf House Company to the management of H&GCT from 1 March 2019.

Although most Trustee roles are up and running there are a few new roles to fill. Page 13 gives details of vacant Roles for which we are looking for suitable candidates. John Kilpatrick outlines the plans for The Wharf House Restaurant with Rooms and Malswick House on the next page.

»» MJ

All the Best Cal!

Dr Caroline Buffery joined the L&PDT team in 2016 having just completed her doctorate on the legal geography of the River Severn. She has been a key part of the delivery of all recent L&PDT projects.

In 2017 Caroline became Company Secretary for the H&GCT. She has been a great help with many aspects of the Trust's work, including much of the legal work regarding the Trust's properties and covenants.

Unfortunately, we now have to say farewell to Caroline who, in January has accepted a teaching post at Bristol University in Law.

We wish Caroline all the best in her new role and thank her for all her help and patience whilst working for the Trust. She was always there to help with advice when we needed it. All the Best Caroline you will be missed.

»» MJ

Please note: With David and Cal leaving the the L&PDT not longer exists so please look in the inside back cover to see who is appropriate to contact.

The closure of Malswick House *John Kilpatrick Reports:*

The Traveller's Rest, as it was formerly called, was purchased by the Trust when it came up for auction in 2013.

It is the only remaining public house alongside the line of our Canal in Gloucestershire and at the time it was felt that its purchase would help to contribute to the sustainability of the canal once a substantial length of the adjacent canal was restored to navigation with prospects of a trip boat operation attracting customers.

Being outside the main area of population trade, at least until a substantial length of the adjacent canal has been restored, has to come from passing motorists and access from/to what is a fast road does not encourage speculative customers and, despite the Trust's efforts over the last four years, the numbers have remained low and

this has clearly had an effect on the viability of the business.

Like many similar country inns, Malswick House has suffered the same decline in customer numbers that many other country pubs have over the last decade and the Trust decided, at least until the adjacent canal restoration has been completed, that it cannot sustain a loss making business and thus made the decision to close it. It is the Trust's intention to keep the building and look at potential short term uses for it. However no decision has so far been made in that regard.

Regular readers will know how much work and time volunteers have put into the restoration and fit-out of both the building and its grounds and to all those who have been involved we would like to say a big **thank you**. **»» JK**

The Wharf House Restaurant with Rooms

John Kilpatrick Reports:

The Wharf House Company require urgent and difficult decisions to be taken by the newly appointed Board of Directors. Following the closure of Malswick House, attention has turned to the very profitable Wharf House Restaurant and Rooms at Over Basin.

Board members have considered a wide range of scenarios from continuing to trade using the current model, to closure of the business. Conscious of the potential for reputational damage it was agreed by the HGCT Board of Trustees that a possible way forward would be to offer a long-term tenancy. The key advantage would be that a tenant might be found relatively quickly. Members who attended an HGCT Social

Evening in the summer will recall a talk from a Trustee of the Kennet & Avon Canal Trust who emphasised the benefits of putting catering ventures in the hands of professional operators. Consequently, a professional valuer has been engaged and tenants are being actively sought.

Over the years much time and effort has been expended by volunteers in fitting out and maintaining The Wharf House and its grounds to a very high standard. The professional valuer has cited this as a key factor in his confidence that the tenancy would be a very attractive proposition. We are extremely grateful to all our volunteers for their dedicated commitment to making a difference in all areas of the Trust's activities.

»» JK

Over Basin ... *vital facilities needed* ...

Maggie Jones writes:

Restoring the Canal to something that can benefit the local community is the very essence of what the H&GCT is about. We want to see the canal as an asset for all to enjoy. This is why an important meeting brought a group of Over Basin users together with David Penny Roger Holmes and myself to discuss the necessity for the construction of the Mill Barn.

It has been some years now since the original plan was approved and shared within this magazine. Project managers for the scheme have been and gone, but sadly, this still leaves those who very much need the facilities that the barn could offer, very much and quite literally out in the cold.

Sailing4Disabled skipper, Pete Bisson, reported that he was having to turn people away because they are unable to accommodate them at present. They have to put up a gazebo for those who are unable to get into the site hut with their wheelchairs. The toilet facilities, a small portaloo, is inaccessible for most too. An alternative arrangement will need to be sourced soon and the Barn promises to give them the facilities required for a range of disabilities.

Model Boat Club have supported the aims of H&GCT since Over Basin was completed back in 2000. They meet there at least three times a week as the water depth and secluded location is ideal for both their yachts and other small craft, but other facilities are not good and the small site hut shared with the Over H&G Volunteers is very cramped and bursting at the seams.



Regular members of the Model Boat Club.

Mill Barn is designed to support a number of different functions. It will benefit both the H&GCT and the wider community who use the facilities that the Canal Basin provides. Local residents also have a stakehold in seeing the Barn built. They have concerns as to how long we are continuing with the site hut and shipping containers. Some initial funds towards the building have already been raised by a sponsorship appeal, but more funds will be needed before any construction can begin.

Project Contract Co-ordinator

It is clear to all concerned that to further this project a new Project Contract Co-ordinator is required and needs to be sought urgently. There is an important role here for someone with the skills to be able to co-ordinate the planning/fundraising and construction of Mill Barn. If you know of someone with these skills who could help with the co-ordination of the Barn's construction, please contact us via the website.

Thank you.

» **MJ**

... Project Contact Co-ordinator required!

Ted Beagles writes:

At the time the site was first opened in September 2000, we had the original Site hut that was used when the basin was dug out. But it soon became clear that this was not adequate for the longer-term use, and an outline scheme proposed to meet these needs. The current site welfare facilities have been with us for several years, the main container was known as the "smart hut" to distinguish it from the others.

Over the years additional containers for storage of materials and a small workshop were added. A further one was also obtained for use as a stand to be used on "open days", to promote the activities of the Trust, but we had no facilities for other groups which we were encouraging to use the canal such as Sailing4Disabled, a rowing group and the Gloucester Model Boat Club. Proposals were made for a permanent building in the form of a barn, using materials recovered from the old hospital. Electricity and water were installed in due course as the site developed and the smart hut became the centre for the welfare facilities for all site users.

Over the years this container has needed various repairs to make it vermin proof and keep out the weather. As I said earlier a number of proposals were developed for a permanent building which all fell through for various reasons, but now we need to urgently drive forward the project to deliver suitable facilities for all our users, hence this appeal for a suitably qualified project manager to lead this significant undertaking.

»» **TB** Over Site Leader



Pete Bisson

Sailing4Disabled customers eating their lunch outside.

Pete Bisson writes:

I'm very sad that Santa has not read our request for a new building, even a smaller version of the "Mill Barn" that has been muted for the last umpteen years, would be more than welcome! This week we are getting ready for the cold weather and part of the raffle prizes will be scarves, thermal bobble hats and gloves for the poor clients after a 20 minute boat journey and want a hot drink find themselves sat outside because they cannot take their wheelchairs into the Over site hut.

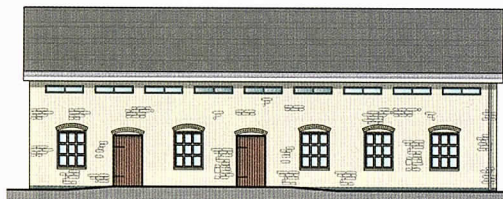
»» **PB** Sailing4Disabled

David Exell writes:

We have been 'moved on' from water to water, and in many ways, we have been lucky to survive as a Model Boat Club. It makes us grateful that Over is such a splendid sailing area.

There is hope that the Mill Barn project will now get the go ahead having been somewhat sidelined for the last few years. Over is a lovely spot, as John Hamer our Harbourmaster says, it would make it 'the jewel in the Canal crown', somewhere to show people what can be done and the varied organizations who can use this wonderful facility on the near edge of a big city like Gloucester.

»» **DE** Gloucester & District Model Boat Club



Site News *roundup!*

Our Volunteers have been kept busy through the autumn and winter months. Here are their reports:

Over Basin

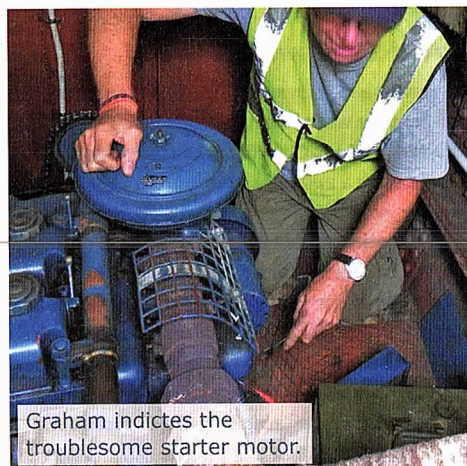
Ted Beagles Reports:

Stuart Pump

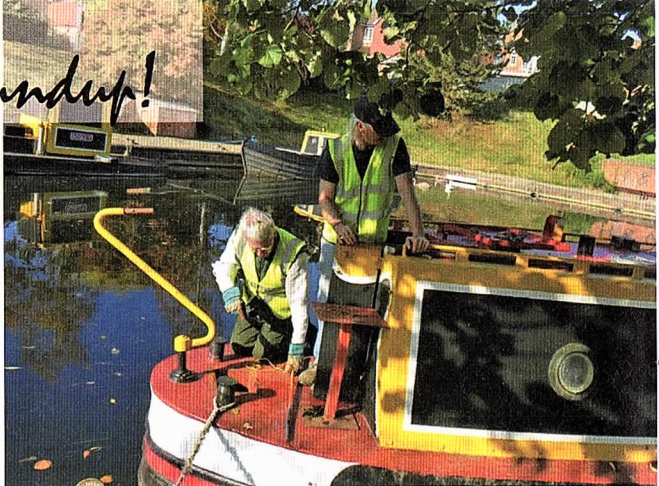
Water levels in the basin are now restored to normal and the pump has now been removed from the flood plain and stored on the main site for maintenance in readiness for the 2019 season. In addition to the routine maintenance, the outlet manifold is showing signs of corrosion and requires repainting with heat resistant paint. The entire suction pipe has also been removed and stored safely on site after cleaning.

Cycle cave roof

Bob and Ivor have completed the scaffolding for construction of the arched brick roof. The design has been revised, with a single brick inner arch and reinforced concrete outer layer to simplify construction. Building will begin as soon



Graham indicates the troublesome starter motor.



Ernest removing weed from Renton's propeller.

as Trust building resources are available to commence the work.

Heritage boats

Renton is now running well, with confidence becoming restored following the problems we had last year with the engine stopping for no apparent reason. The new plastic fuel tank is clamped into position and all of the associated permanent pipework and fittings etc. completed. Our latest challenge is to cure starter motor problems with **Alder**, we have been through all the usual checks but so far with no success

Susan 'e' is back in the water, and **Mr Maysey** is about to be lifted out for hull inspection and blacking.



Pat working in The Wharf House gardens.

Navigation and canal basin weed

Clearance by the Model Boat Club and the Sailing4Disabled group has given us a basin clear of all algae and bottom growing weed. Floating debris from bulrushes etc. is mostly picked up from the Heritage boats during routine cruises along the entire length of the canal. The narrow section is still causing problems for all the boats, and needs more work to control bulrush encroachment, even with the water maintained at high level.

Winter maintenance

We have now tidied up and stored all salvageable materials left on site following the Britannia Engineering departure. The general garden maintenance around The Wharf House continues as usual when weather permits. The Wharf House sign on the main road has been reinstated after being knocked down in a road traffic accident, but some brackets need renewing to finally complete the job.

A second sign at the entrance to The Wharf House has been renewed. It is hoped that the revised design will make it easier for visitors to The Wharf House to find the car park. >>> **TB**



The reinstated sign on the main A40.



Bob drives the tractor to fill in the puddles in the compound.



Ted Beagles

Tim rakes the road planings level.

Thank you to Grove's Batteries

Over Volunteers would like to thank David Grove, Colin McPherson and Chris Grove of **Grove's Batteries** in Cheltenham for their support over the years in supplying batteries free of charge for our Narrow Boats and other equipment for the Canal Trust.

They are a family business that is based in Cheltenham and Gloucester who are celebrating 70 years of continuous business. They have deep ties with most popular brands. Unlike other battery stockists, they work hands on with batteries daily so you can rest easy that their recommendations come from their experience rather than from a manufacturer brochure.

>>> **Mike Hunt**

KEYWAY

NATIONWIDE PLANT RENTAL



Over 50 years experience
Quick response time
Extensive fleet of latest equipment



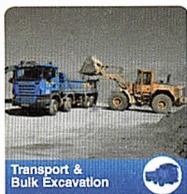
With more than £7m invested annually and a fleet of 1000, Keyway offers the most comprehensive range of equipment and support services for our customers and operators.



Welcome to the Keyway Group – Extensive range of equipment, personal customer care



Nationwide Plant Rental



Transport & Bulk Excavation



Recycling & Aggregates



Skip Hire



Plant Sales



Keyway provides a complete recycling and waste management service to the construction and demolition industry operating a fleet of specialist vehicles within the south west region.

We seek to provide value for money and improved environmental solutions for all our customer needs. www.keyway.co.uk



UK CONSTRUCTION RECRUITMENT is a leading employment agency specialising in the supply of temporary construction staff for the built environment. www.ukcr.co.uk

NATIONWIDE STONE SUPPLIES



NATIONWIDE STONE SUPPLIES specialises in providing all of your aggregate solutions no matter the size and scale of your project. www.nationwidestonesupplies.co.uk

For further information please contact us on
T: 0845 241 81 81 | E: plant@keyway.co.uk | www.keyway.co.uk

Oxenhall & Newent

Brian Fox Reports:

Preparations for rebuilding the wing wall below the lock are continuing. More reeds have been removed but we are being hampered by blockages in the overflow pipe which was installed on the dam and consequently the water level is not as low as it should be.

The stump of a large willow tree adjacent to the wall is now dead and it has been cut down as far as possible with a chain saw but it will be a job for an excavator to remove it, including the roots, completely.

Penny and Ralph have been working down at Malswick in the field next to the pub strimming brambles and nettles which have then been burnt. Some of the trees in the field boundary required a chainsaw to cut them to size so more logs have been generated to add to the pile already for sale (*see page 30*). The field itself was extremely wet and investigations revealed that this was being caused mainly by the rainwater runoff from the adjacent main road. This has now been rectified by recutting the roadside ditch which had become clogged and the excess water now runs directly into the brook at the bottom of the field.

Geoff, Keith and Richard have returned from Malswick to make up a team to carry on work at the rear of the fire station in Newent. Readers will remember that last winter we cut down several saplings, leaving about 18 inches sticking out of the ground. This has now enabled us to use our Tirfor winch which has the power, when operated correctly by our fittest men, to pull out these stumps. More training and some basic risk assessments and the job is well under way although there are still many to pull out and this is now urgent before they can grow again.

A project team is working on plans for the restoration of Newent railway station, an aqueduct over Bridge Street and two locks adjacent to the fire station in Newent. (*See pages 6–7*) Regular meetings are being held to prepare detailed plans for submission to the local authority for planning permission and also to apply for grant aid to help with the costs. The foundations of the old ticket office/waiting room have been uncovered using a borrowed excavator so we now have measurements which will enable the restoration to be precise. A security fence has been erected around the whole site using dozens of Heras fencing panels, so we are ready to go as soon as all the above have been signed off. >>> **BF**

Would you like to get involved?

Your help will be most welcome on any of our sites, please contact for further details:

Hereford Roving Team

THURSDAYS

John Pritchard 01432 272972,
johnpritchard32@btinternet.com

Yarkhill – THURSDAYS

Chris High 01568 615 575,
chris@chrishigh.plus.com

Oxenhall/ Newent Station –

TUESDAYS

Brian Fox 01432 358 628,
brianfox74@gmail.com

Malswick – TUESDAYS

Paul Henshaw

01684 293 930

paulhenshawuk@yahoo.co.uk

Over Basin/Vineyard Hill –

WEDNESDAYS

Ted Beagles 01452 522 648,
tedbeagles@blueyonder.co.uk

Canal Walks



H&G Canal Trust has produced a series of walk leaflets which explore various parts of the Hereford & Gloucester Canal.

**STAPLOW,
WITHINGTON WHARF,
DYMCK,
LLANTHONY LOCK,
OXENHALL and
OVER BASIN**

30p per walk leaflet (Over Basin 40p)

*All proceeds towards the
promotion and restoration of the
Hereford & Gloucester Canal.
available via the website.*

Logs for sale from Malswick House

These logs are processed by our volunteers from the clearance work during canal restoration. the sale of them helps to supllment the cost of our work and so we hope you will support us in this venture.

The logs available are mainly
ash and hawthorn.

Despite Malswick House
being closed there are
still logs for purchase
at **£50 per builders
dummy bag.**



Sales can be arranged by contacting
Brian Fox on **01432 358 628**
oxenhall@h-g-canal.co.uk



WaterNav

WaterNav.
The waterway's
SatNav.



Formerly



e-canalmap

The Bees at Over Basin

Apiarist, Chris Dainton, tells us about the bees that work at Over.

I was grateful to accept an invitation to place some bees at the Basin in 2009, with a view to selling some of the honey at The Wharf House.

At present I have six hives next to the canal. This might vary between two and six depending on how well the bees behave. Hive numbers usually rise in the summer when hives are split to reduce swarming but I always aim to re-unite the hives for winter.

The past summer has been a spectacular beekeeping season. My best in 43 years. It has made up for the previous two years which were my worst. The high temperatures, interspersed with a good splash of rain, produced an abundant floral nectar yield. The bees were, at last, not confined to hives by low temperatures and continuous rain and made the best of the weather.

The local Spring honeys come mainly from fruit trees, horse chestnut, clover, lime trees, dandelion, oilseed rape and garden flowers – all of which are abundant in the Over Basin locality. They usually give a lighter colour honey. When a blend includes oilseed rape honey it produces a fine smooth crystal which is good for creamed and set honey.



Clear and creamed honey from the Over hives.

Summer honeys are usually slightly darker. In this area they may come from the local farmer's broad beans and the acres of wild blackberry. Even the ubiquitous

himalayan balsam on the River Severn banks gives a flow of nectar and pollen to set the bees up for winter. The Over bees are lucky to have a foraging area which is a mix of urban, agricultural and 'set aside' flowers.

It is usually difficult to determine the source of 'Basin' honey, but it has a splendid flavour and won 1st prizes for clear and creamed honey at the Cheltenham & Gloucester Assn. Honey Show.

Here's hoping for another bumper summer in 2019!

»» CD



Some of the hives tucked away at Over Basin.

WINTER BAZAAR



Pat Skeet reports

This was an exceptionally friendly occasion this year, the warmth of atmosphere being commented upon. The weather was quite mild and, certainly in the morning, despite occasional showers, there was a constant trickle of customers through the doors. Unlike some previous years, they were happy to spend a little money and all the stallholders, except one, were thrilled with their takings.

Our wonderful Christmas hamper was, as usual, a popular activity, making us a healthy income by the end of the day.



Dick draws the winning ticket for the hamper.

This year it was won by one of our volunteers, which is always a happy conclusion to the day.

The refreshments table was, as usual, groaning with delicious home-made cakes, cheese scones, apple pies and soup for lunch. The biggest problem of the day was choosing



Colourful scarves.



Lovely wood turned gifts.



Penny running the H&GCT stand.

which cake to have! Several of us succumbed to several slices, being unable to choose!! The soup was less popular than usual, possibly because of the mild weather, but the refreshments also made us a healthy profit again. A huge debt of gratitude is owed to those who provide such wonderful food for us to sell and enjoy.

Interest in the Canal from those who came was definitely alive and kicking and some of our volunteers talked about it for much of the day!

All in all, a good day seemed to be had by all. This does not happen without a great deal of effort by many volunteers both beforehand and on the day, in a wide variety of ways, so a huge thank you to all who helped in any way. A total net profit of just over £500 was raised for the Trust. Please put November 9th in your 2019 diary!

»» PS



Chance for a 'cuppa' and a chat.



Lovely woven rugs.

Dick Skeet

stationery • leaflets • mailers • posters • folders • programmes • newsletters • brochures • prospectuses • calendars • magazines • books • exhibition panels

PRINT PLUS

01432 272025

126 Widemarsh Street • Hereford HR4 9HN

Fax: 01432 353962 • Email: enquiries@printplushereford.co.uk

www.printplushereford.co.uk



always delivering quality





Everything Canal Boats

*Services from 10 marinas in the UK and
boating holidays from 16 locations.*

- Boating Holidays
- Boat Sales
- Day Boat Hire
- Boat Builders
- Chandlery & Repairs
- Marina Services
- Moorings
- Canalside Holiday Cottages



The Inland
Waterways
Association



www.everythingcanalboats.com

Call Us: 0330 333 0595



Pete Bisson

Happy New Year, I'm very sad that Santa has not read our request for a new building even a smaller version of the "Mill Barn" that has been muted for the last umpteen years, would be a more than welcome!

In 2018 we put up with the weed, then a lack of water, which meant that we had fewer Client days. On the upside a more up-to-date KataKanu, which has been a great hit, a new broom, comes to mind. This year has started with a request to borrow the Wheelyboat, over the Whitsun weekend by the Wilts & Berkshire Canal Trust, so no, we're not moving, that I know of!

We are already working on plans to provide water support for canal management, a task which is also in our interest. So to end, this week we are getting ready for the cold weather and part of the raffle prizes will be scarves, thermal bobble hats and gloves for the unfortunate clients, who, after a 20 minute boat journey will want a hot drink, but find themselves sitting outside because they cannot take their wheelchairs into the Over site hut, or journey home without a warm drink.

All aboard the Wheelyboat for a regular trip down the Canal at Over.

We have a funding account with GLOUCESTER LOTTERY a single ticket costs £1.00 if you nominate SAILING4DISABLED/ROWINGPIRATES a 50% is added to our funding account, and you could win £25,000.

For more information call Pete 07913015018 ask for Long Gone Silver. or come and pay us a visit on a Tuesday 11.00 to 14.00 at Over Wharf. Don't forget your woolly extras, hope to see you soon.

»»» **Pete**, Long Gone Silver or Jolly Skipper

Sailing4Disabled meets every Tuesday at **Over Canal Basin** from 11.00 to 14.00. It is open to everyone – whether they have a disability or not.
Contact: Pete (Long Gone Silver) Bisson: on 07913 015018 • peterwb49@hotmail.com
• www.sailing4disabled.org.uk

News from the Friends of National Waterways Museum Gloucester

Chris Witts writes

Another New Year and a new season of talks at the museum.

We began our programme with a talk in January by Roy Murphy on 'Salt Production to a Spa Town'. A first for the Friends as that this talk was held on the dumb barge SABRINA 5, hopefully all enjoyed the new venue and look forward to the remainder of the season's talks held onboard this magnificent old vessel.

Our next talk is by David Viner on "The Canal – Past & Present". David works for the Canal & River Trust thus fresh information from our bosses. This talk is held on Tuesday 26th February at 7:30pm.

All of us associated with our local waterways are familiar with the barque KASKELOT. Sadly, she is no more under this name, for the ship has been sold to the French, renamed LE FRANCAIS and berthed in St Malo. I am sure that we all agree she was a wonderful sight when visiting Tommi's yard opposite the museum. Her tall masts could be seen for some distance from the docks, a stunning sight when viewed from the right angle. Whether we see her again at Gloucester – who knows?

We at the museum are looking forward to May this year when again Gloucester hosts another Tall Ships Festival. Plans are still in the development stage so no details yet, but we are assured of another spectacular festival.

»» **CW** Chairman FGWM



Formerly named, *Kaskflot*, passing through the opened St Anne's Bridge, Gloucester.



Formerly named, *Kaskflot*, sails away on the Gloucester Sharpness Canal.

Chris Witts



MOAT CONTRACTING

GROUNDWORK SPECIALISTS



Large enough to deliver. Small enough to care.

07887 544 400

moatcontracting@aol.co.uk



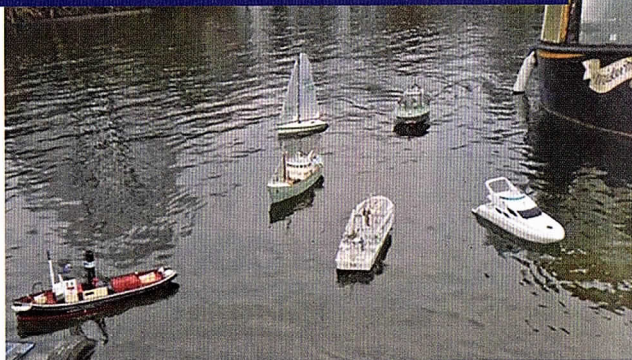
So far we seem to have avoided an iced over Canal which has been a problem in recent years when only the small minority with airscrew driven Florida style airboats have been able to move over the Canal.

Although occasionally when the ice has been only fairly thin a public spirited member would put in an old heavy model on the water and break up the ice, this is fine until your particular pride and joy gets stuck and you cannot retrieve it!

Some members (*possibly ejected by wives from the house as being in the way*) were out on Boxing Day at Over braving the cold weather.

The Micromagic racing yacht sailors turn out to race every other Friday in the Winter series, whatever the weather. They are a hardy bunch.

This year sees our 30 years celebration as a Club and Ted Tedaldi, our Chairman, and long time member, has written a history of the Club which has just been added to our website. Reading through it where we have been 'moved on' from water to water, and in many ways, we



Even on Boxing Day, our hardy boaters turn up at Over Basin to sail their boats!

have been lucky to survive as a Model Boat Club. It makes us grateful that Over is such a splendid sailing area. Although the Docks and Saul, on the ship Canal, are available as well, Over is superb as a base.

Below is an excerpt from Ted's history which shows why we are so glad to be at Over!

"Westgate deteriorated because of council leisure cuts, familiar tones. I arranged to meet someone from leisure activities. This lady turned up, smartly dressed, I explained to her our plight. She stated she could not see anything wrong with the lake. I explained to her we were standing in the lake and our feet were dry. I helped her out, and have never seen her since."

Sometime in early February John Hamer will have us filling mesh sacks with barley straw again, to control the algae growth on the still waters of the Canal, this method of control is environmentally friendly and essential as the Canal is close to two rivers, the Leadon and the Severn, it worked very well last year.

»» DE

Gloucester & District Model Boat Club

Sails at Over basin on Wednesday, Friday and Sunday afternoons (weather permitting). You should find somebody sailing between 1.00pm and 4.00pm. The Club members will be pleased to talk to you about their models and the Club. Members have models of all descriptions including amphibious craft. Yachts are very popular. *Chairman. Edward Tedaldi*

nature watch

Xylaria hypoxylon



Nature watcher and Volunteer Alan McBride shares this photo with us.

At Malswick our rotting wood piles have produced an early sign of spring; the Stag's Horn fungus (also called the Candlestick or Candlesnuff fungus). Its scientific name is *Xylaria hypoxylon* which means below wood, we found these specimens on top of an old stump. >>> **AM**

Copy deadline for the next Wharfinger
MONDAY, 1 APRIL

Advertising in *The Wharfinger*

Show the support of your business by advertising in *The Wharfinger*. Rates from £39 per issue and we will gladly design your advertisement free of charge. Please contact:

Ginny Burkett on **01531 820345**

or email: **vmbktt@gmail.com**

Page List of Advertisers:

- 5 All Seasons
- 2 Beta Marine
- 40 Braunston Brokerage/Marina
- 34 Everything Canal Boats
- 7 Geoffrey Urch Garden Services
- 1 E.B Hayward & Co Ltd.
- 28 Keyway
- 37 Moat Contracting
- 33 Print Plus
- 39 The Oak Inn, Staplow
- 30 Water Nav: River Canal Rescue
- 14 The Wharf House

**Please support our advertisers –
SUPPORT OUR SUPPORTERS**



THE OAK INN
Staplow HR8 1NP
01531 640954

**A VERY WARM WELCOME AWAITS YOU AT OUR NEWLY REFURBISHED INN
OPEN FOR LUNCH AND DINNER EVERY DAY IN OUR COSY BAR AREAS OR RESTAURANT
GOOD SELECTION OF REAL ALES - GOOD BEER GUIDE 2009 & 2010**

**REAL LOG FIRES, FLAGSTONE FLOORS, OLD BEAMS & HOPS
PRETTY BEER GARDEN ~ PARTIES CATERED FOR ~ DOG FRIENDLY
THE ONLY PUB IN HEREFORDSHIRE THAT ABUTS THE LINE OF
THE HEREFORD AND GLOUCESTER CANAL**

FOUR EN-SUITE B&B ROOMS NOW AVAILABLE
www.oakinnstaplow.co.uk



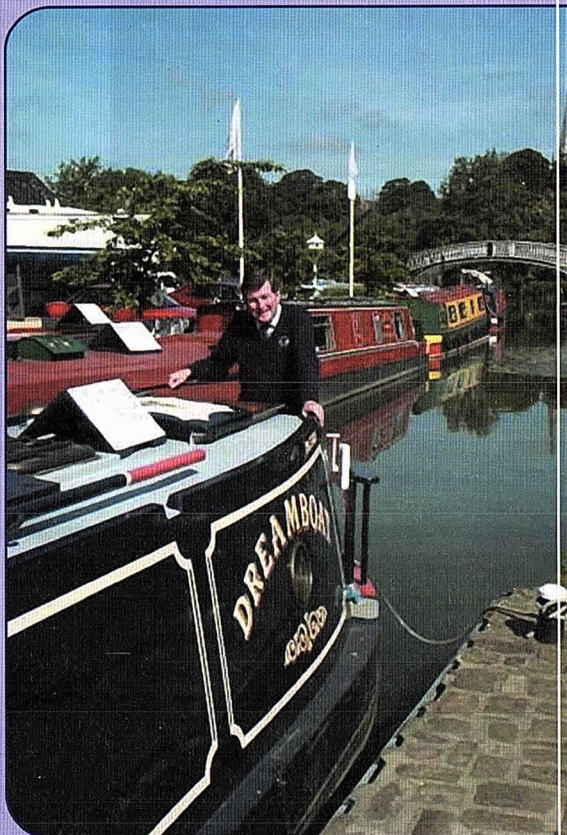
Buying or selling your DREAMBOAT?

*Then make Braunston Brokerage
– at the heart of England's
waterways – your first port of call!*

*Established in 1988, we are
a major player in the selling
of narrowboats – new and
secondhand – with a
reputation for professionalism
that is second to none.*

*Our marina offers the fullest
range of support services.
Uniquely, we have two dry
docks on-site for surveys,
hull-blackening, repaints, sign-
writing and below waterline
repairs. Also engineering and
refit facilities.*

*Sell your Dreamboat
where it will be seen!*



For full information – including our
competitive brokerage package –
contact Tim Coghlan at:

Braunston Marina Limited, Braunston,
Nr Daventry, Northants NN11 7JH
Telephone 01788 891373
Fax 01788 891436

Website: www.braunstonmarina.co.uk
Email: sales@braunstonmarina.co.uk

Contact details...

Chair – Vaughan Welch

0121 477 9782 chairman@h-g-canal.org.uk

Land Environment / Vice-Chair – John Kilpatrick

0121 477 9782 land&environment@h-g-canal.org.uk

Finance – Roger Holmes

01594 840 316 finance@h-g-canal.org.uk

Projects –

projects@h-g-canal.org.uk

Strategy – Ralph Barber

01432 853 086 strategy@h-g-canal.org.uk

Membership Secretary – Nigel Jefferies

Two Hollylea Close, Bartestree, Hereford, HR1 4DN

01432 850 661 membership@h-g-canal.org.uk

Mail Order Sales – Janet Moulton

18, Coningsby Court, Coningsby Street, Hereford, HR1 2DF

01432 264 366 mailorder@h-g-canal.org.uk

The Wharfinger Editor/ Marketing – Maggie Jones

01452 618 010 editor@h-g-canal.org.uk

Commercial – Philip Marshall

01452 760301 commercial@h-g-canal.org.uk

Restoration & Maintenance –

maintenance@h-g-canal.org.uk

Over Site Leader – Ted Beagles

01452 522 648 overbasin@h-g-canal.org.uk

Oxenhall Site Leader – Brian Fox

01432 358 628 oxenhall@h-g-canal.org.uk

Malswick Site Leader – Paul Henshaw

01684 293 930 malswick@h-g-canal.org.uk

Yarkhill Site Leader – Chris High

01568 615 575 yarkhill@h-g-canal.org.uk

Kymin East Site Leader – Ralph Barber

01432 853 086 kymineast@h-g-canal.org.uk

Hereford Roving Team – John Pritchard

01432 272 972 hereford@h-g-canal.org.uk

General enquiries – information@h-g-canal.org.uk

Want to help?

The Canal Tru is always in need of new volunteers our activities continue to expand. You can normally find a use for any skill from gardeners to first aiders, brickies to those willing to help with a shovel, pen or laptop. The H&G CT also welcomes offers of gifts of good quality used tools and machinery from those who no longer need or cannot use it.

Want to join?

Please support our voluntary work by becoming a Member of the H&G CT. A membership form is available online or from The Wharf House.

H&G CT UK Membership Rates

	Annual	Life
Individual	£10	£200
Joint/Family	£15	£300
Senior Citizen	£7.50	£115
Joint Senior Citizen	£10	£150
Corporate	£25	£500

PLEASE NOTE: All subscriptions and donations are treated as being made under the Gift Aid scheme unless you state that you do not wish us to do this. Payment made by Standing Order greatly assists us and payment remains under your control. All payments to:

H&G CT, 6, Castle Street, Hereford, HR1 2NL

Visit our website:



www.h-g-canal.org.uk

Unless specifically stated opinions expressed are those of the author and do not necessarily reflect the policy of the Herefordshire Gloucestershire Canal Trust. As a Registered Charity, with defined objectives, we cannot endorse the content of any specific advertisement product or services. The Trust accepts no liability for any matter, or advertising, contained in this magazine. Reproduction of extracts from this magazine is welcomed provided that full acknowledgement is given.

Membership records are computerised. Your entry is available for inspection if you send a SAE to the Membership Secretary.

We try to ensure details of talks/events are correct – please verify with the relevant organiser if travelling long distances.

**© 2019 Published by the Herefordshire
& Gloucestershire Canal Trust.**

The Wharf House Company Ltd [No. 4627931] is part of the Herefordshire & Gloucestershire Canal Trust Ltd group of companies. The Herefordshire & Gloucestershire Canal Trust is a non-profit distributing company limited by guarantee [No. 2704407] and is a registered charity [No. 1010721].

Registered Office: The Wharf House, Over Canal Basin, Over, Gloucester, GL2 8DB.

Hereford

Our objective is to rebuild the 34 mile Canal linking the centre of Hereford to Gloucester and its connection with the 2,500 mile inland waterway network. We have major restoration sites in each county, together extending to some 4 miles. The intention is to provide a financially sustainable independent Canal which does not require regular financial support from public bodies for its future operation and maintenance.

The H&G Canal Trust

The Canal Society, formed in 1983, became the Herefordshire & Gloucestershire Canal Trust, a registered charity, in 1992. It has an ordinary and corporate membership approaching 1,400, here and abroad.

The original Herefordshire & Gloucestershire Canal

Work started in 1792 reaching Ledbury from Gloucester by 1798. In 1827 Steven Ballard was appointed to oversee the Canal's completion, which reached Hereford in 1845; this was one of the last major canal routes completed in Britain. The Canal stretched from the River Severn at Gloucester, via Newent, Dymock and Ledbury to Hereford, using 22 locks and 3 tunnels. It was closed in 1881 to allow construction of the Ledbury-Gloucester railway which in turn closed in 1964.

Gloucester Quays

Experience More

